

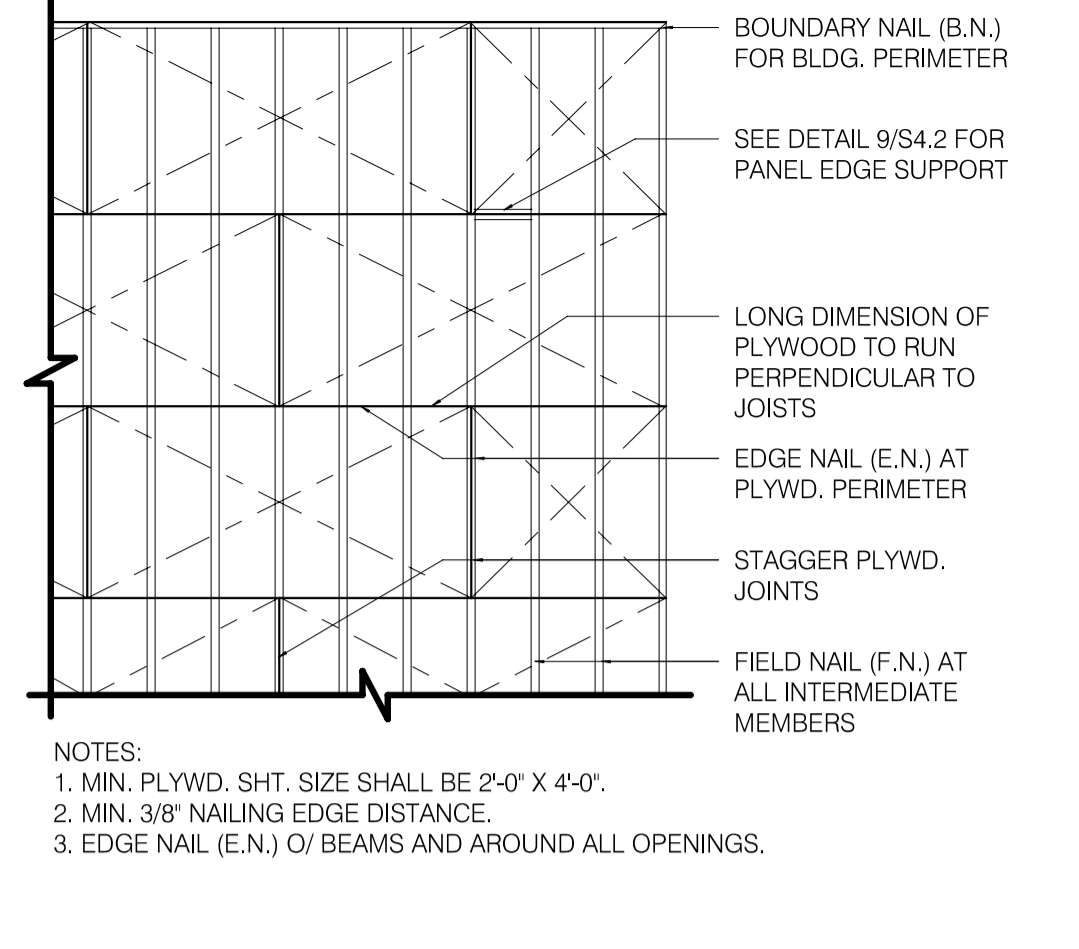
**APPROVED**  
ePLAN  
**PLAN REVIEW**  
Buildings, Safety Engineering  
& Environmental Department  
Date: 02/21/23  
Permit Number: 21-00003-00084  
**GPD GROUP**  
Professional Corporation  
520 S. MAIN STREET, SUIT 2531  
AKRON, OH 44311  
330.572.2100 FAX: 330.572.2102

**CONNECTION:**

1. JOIST TO SILL OR GIRDER, TOENAIL (2-8d)
2. BRIDGING TO JOIST, TOENAIL EACH END (2-8d)
3. 1"x6" (25MMx152MM) SUBFLOOR OR LESS TO JOIST, FACE NAIL (2-8d)
4. WIDER THAN 1" x 6" (25MMx152MM) SUBFLOOR TO JOIST, FACE NAIL (3-8d)
5. 2" (52MM) SUBFLOOR TO GIRDER, BLIND AND FACE NAIL (2-16d)
6. SOLE PLATE TO JOIST OR BLOCKING, TYPICAL FACE NAIL (16d @ 16" O.C.)
7. SOLE PLATE TO JOIST OR BLOCKING, AT BRACED W. PANELS (3-16d PER 16")
8. TOP PLATE TO STUD, END NAIL (2-16d)
9. STUD TO SOLE PLATE (2-16d END NAIL)
10. DOUBLE STUDS, FACE NAIL (16d @ 16" O.C.)
11. DOUBLE TOP PLATES, TYPICAL FACE NAIL (16d @ 16" O.C.)
12. DOUBLE TOP PLATES, LAP SPLICE (8-16d)
13. BLOCKING BETWEEN JOISTS OR RAFTERS TO TOP PLATE, TOENAIL (3-8d)
14. RIM JOIST TO TOP PLATE, TOENAIL (8d @ 6" O.C.)
15. TOP PLATES, LAPS AND INTERSECTIONS, FACE NAIL (2-16d)
16. CONTINUOUS HEADER, TWO PIECES (16d @ 16" O.C. ALONG EDGE)
17. CEILING JOISTS TO PLATE, TOENAIL (3-8d)
18. CONTINUOUS HEADER TO STUD, TOENAIL (4-8d)
19. CEILING JOISTS, LAP OVER PARTITIONS, FACE NAIL (3-16d)
20. CEILING JOISTS TO PARALLEL RAFTERS, FACE NAIL (3-16d)
21. RAFTER TO PLATE, TOENAIL (3-8d)
22. 1" (25MM) BRACE TO EACH STUD AND PLATE, FACE NAIL (2-8d)
23. 1"x8" SHEATHING OR LESS TO EACH BEARING, FACE NAIL (2-8d)
24. WIDER THAN 1"x8" SHEATHING TO EACH BEARING, FACE NAIL (3-8d)
25. BUILT-UP CORNER STUDS (16d @ 24" O.C.)
26. 2" PLANKS (2-16d AT EACH SPACE)
27. 2x6 BOX BEAM / HEADER (12d @ 12" O.C.)
28. BUILT-UP GIRDER AND BEAMS (20d @ 32" O.C. AT TOP & BOTTOM AND STAGGERED 2-20d AT ENDS & AT EACH SPACE)

**NAILING:**

- (3-10d)
- (2-8d)
- (2-8d)
- (3-8d)
- (2-16d)
- (16d @ 16" O.C.)
- (3-16d PER 16")
- (2-16d)
- (2-16d END NAIL)
- (16d @ 16" O.C.)
- (16d @ 16" O.C.)
- (8-16d)
- (3-8d)
- (8d @ 6" O.C.)
- (2-16d)
- (16d @ 16" O.C. ALONG EDGE)
- (3-8d)
- (4-8d)
- (3-16d)
- (3-16d)
- (3-8d)
- (2-8d)
- (3-8d)
- (16d @ 24" O.C.)
- (2-16d AT EACH SPACE)
- (12d @ 12" O.C.)
- (20d @ 32" O.C. AT TOP & BOTTOM AND STAGGERED 2-20d AT ENDS & AT EACH SPACE)

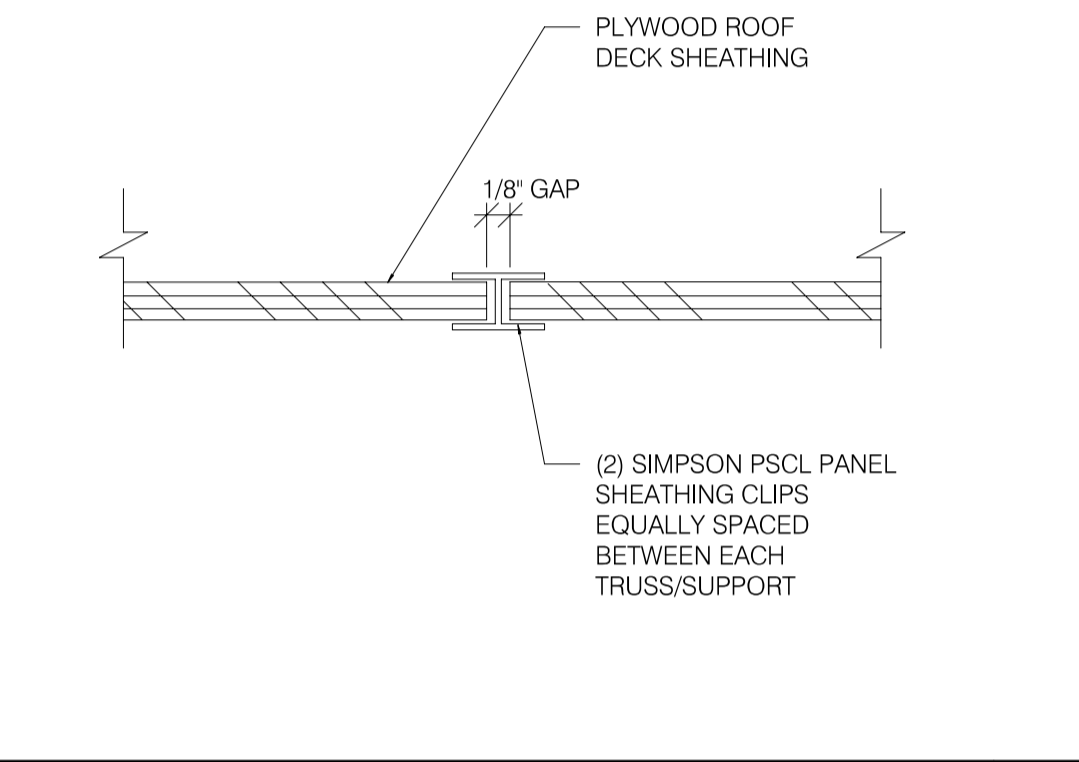


**ROOF NAILING PLAN** N.T.S. **8**

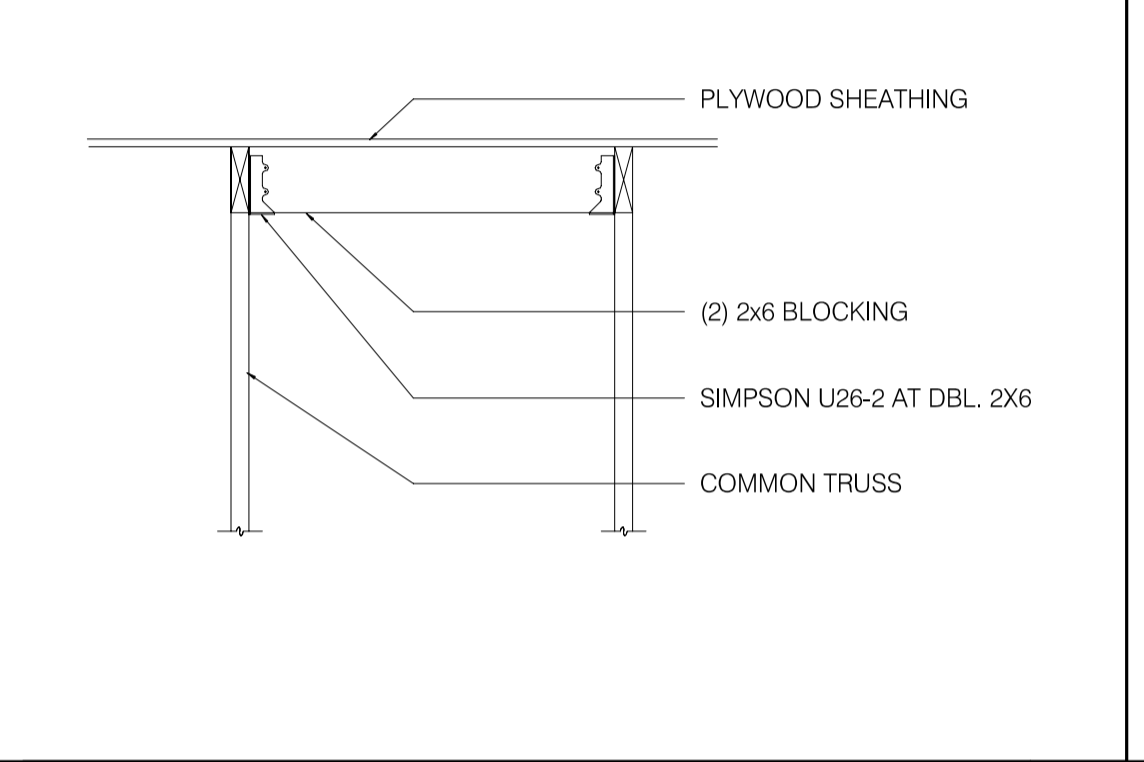
EQUIPMENT	DESIGN WEIGHT
HVAC UNIT - RTU-1	* SEE PLAN
HVAC UNIT - RTU-2	* SEE PLAN
EXHAUST FAN - EF-1	* 200 lbs.
EXHAUST FAN - EF-2	* 70 lbs.
HOOD #1 - TACO BELL	400 lbs.
ICE CONDENSERS	200 lbs.
FREEZER CONDENSER	300 lbs.
COOLER CONDENSER	300 lbs.

\* A. ALL DESIGN WEIGHTS INCLUDE CURB.  
B. COORDINATE WEIGHTS WITH HVAC UNIT SCHEDULE 1/M 1.0.

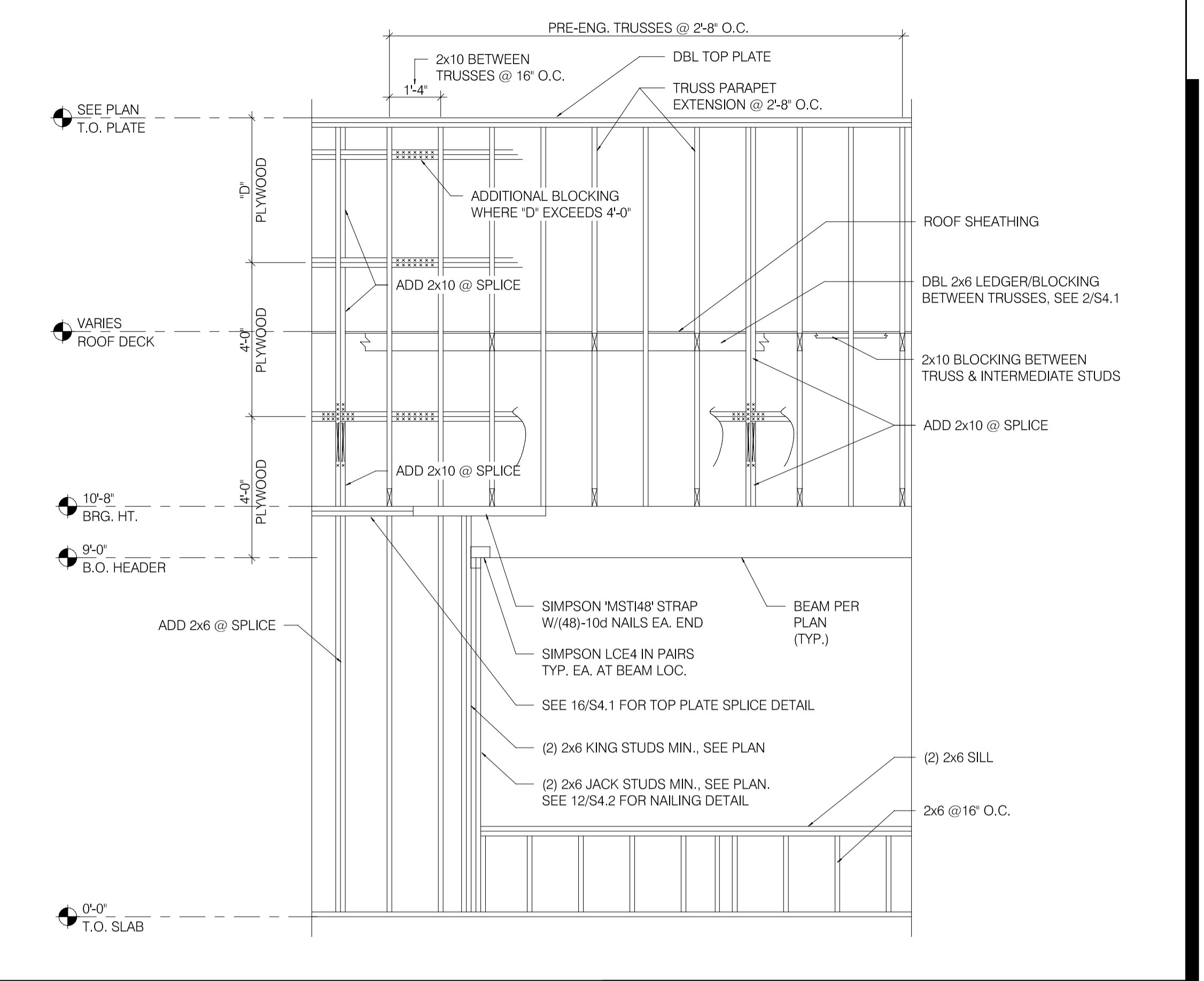
**ROOF TOP EQUIPMENT WEIGHTS** 1" = 1'-0" **5**



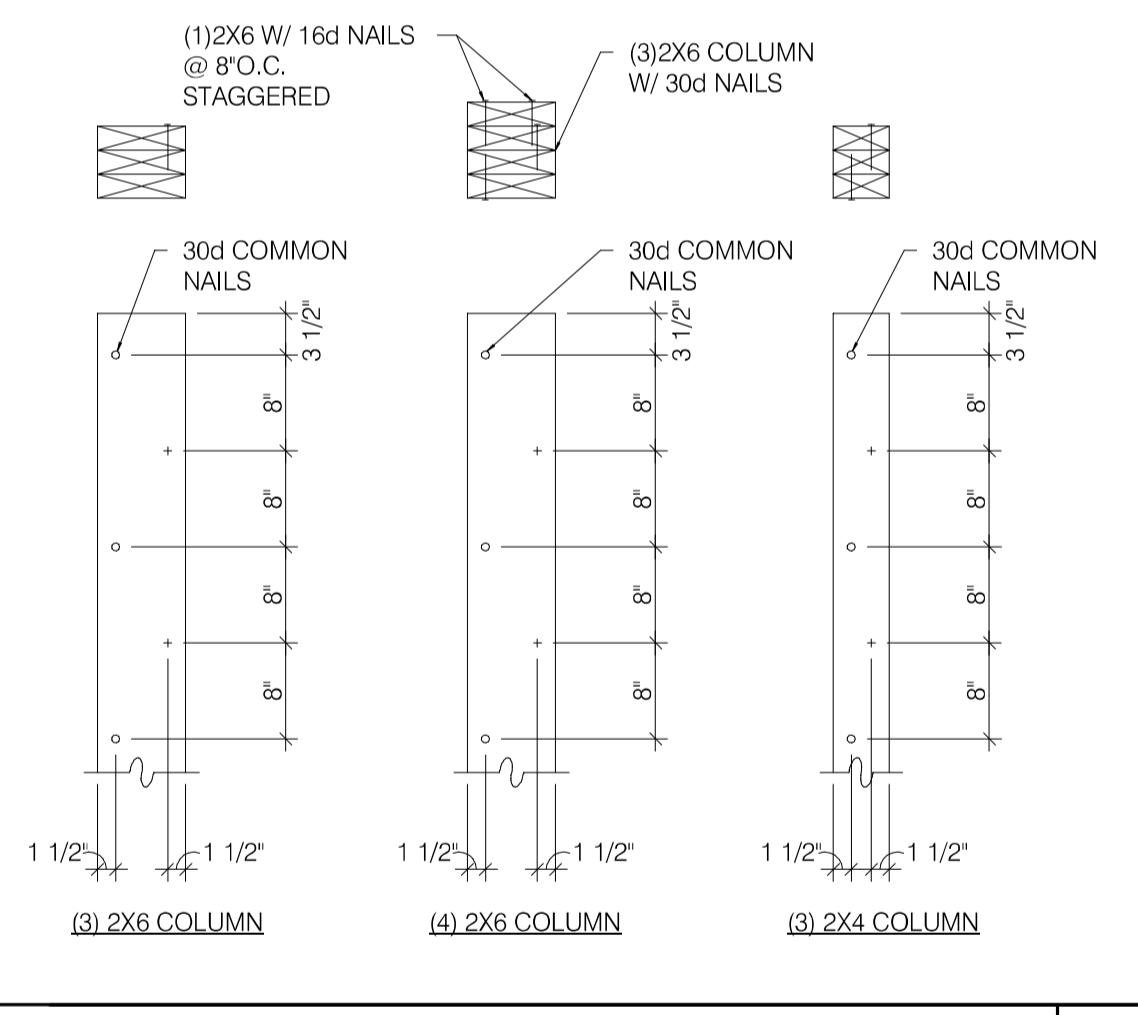
**PLYWOOD EDGE BLOCKING** 1" = 1'-0" **9**



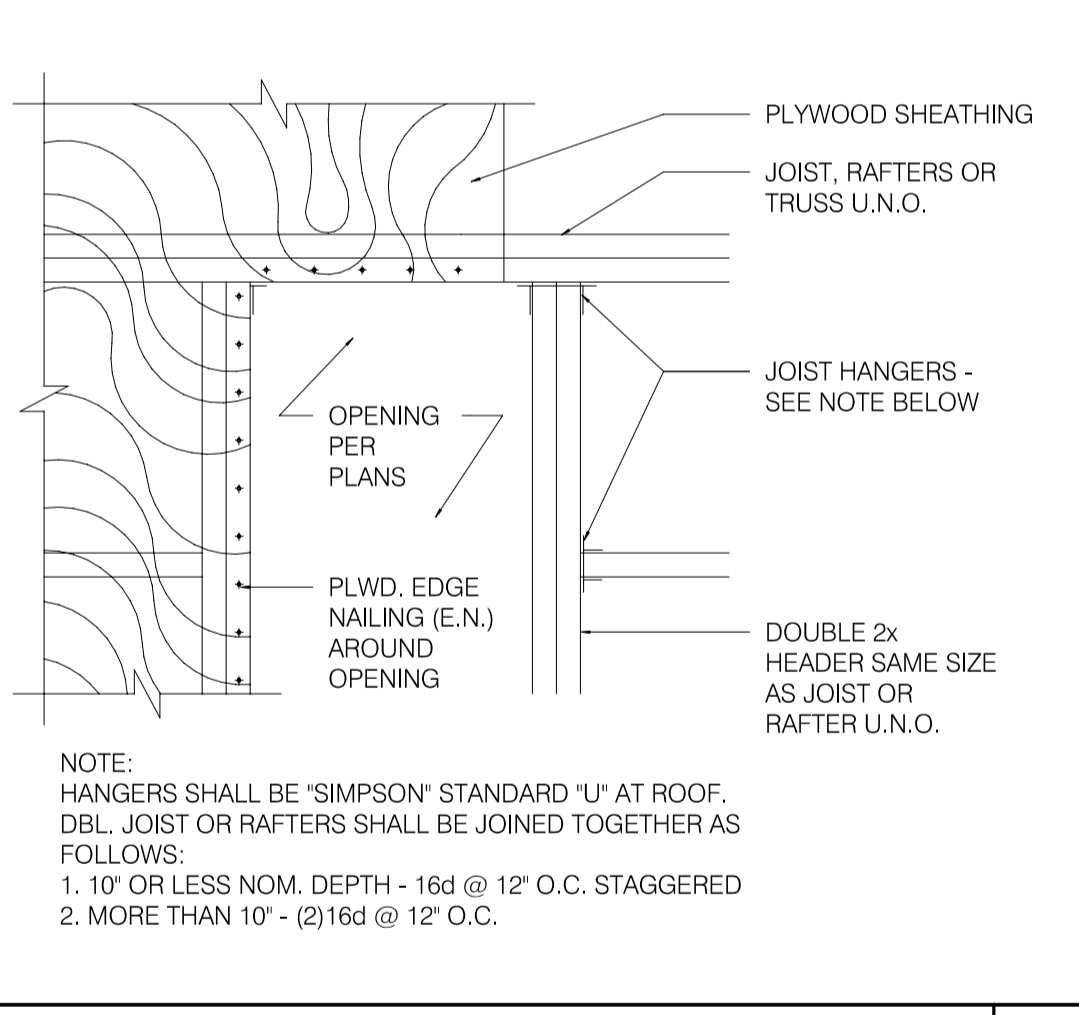
**ROOF OPENING DETAIL** 1" = 1'-0" **6**



**WALL FRAMING DETAIL** 1" = 1'-0" **1**



**BUILT-UP 2X COLUMNS** 1" = 1'-0" **12**



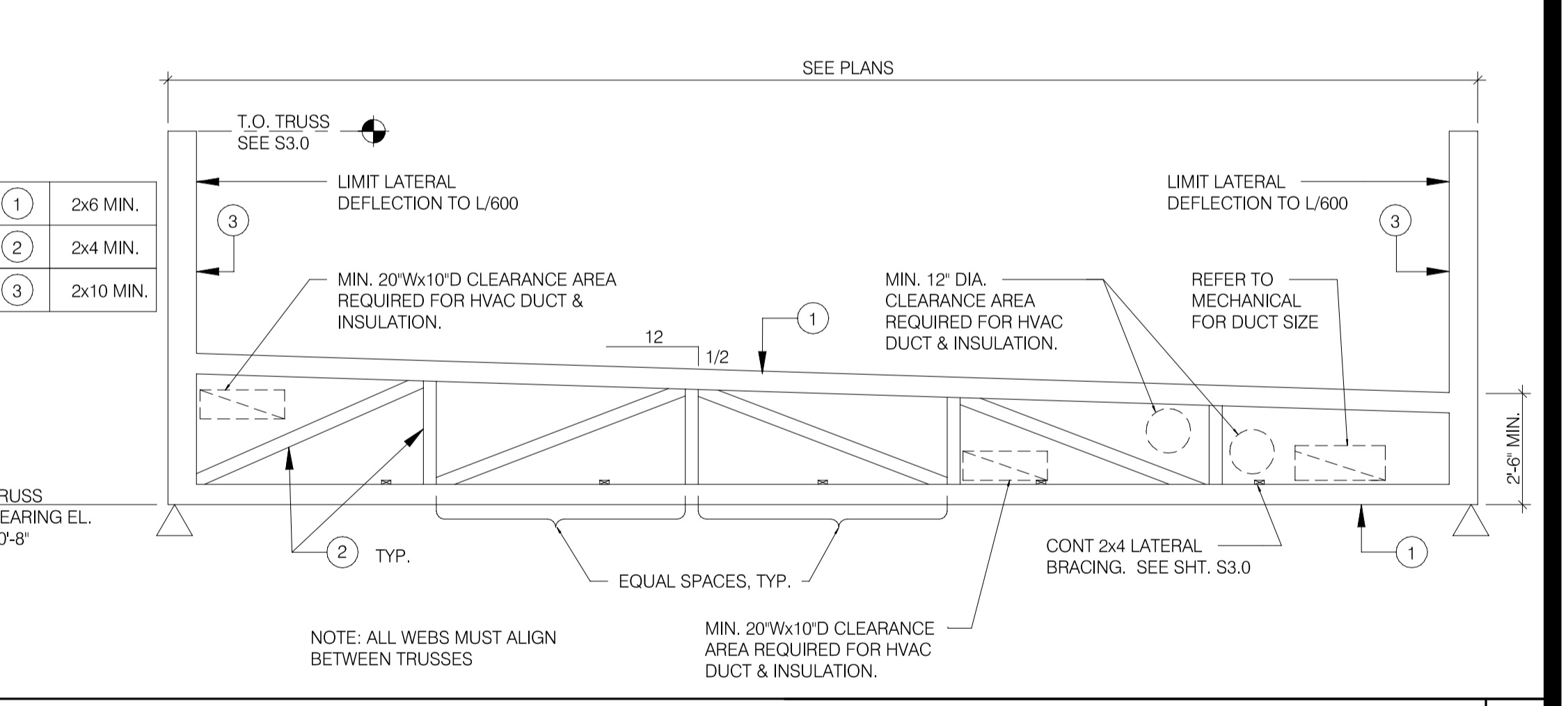
**TYPICAL ROOF OPENING** 1" = 1'-0" **10**

TRUSS TYPES	SINGLE TRUSS DESIGNATION	DOUBLE TRUSS DESIGNATION	BEARING POINT	COMMENTS
T1 - T23	X	XX		SEE NOTE 1.

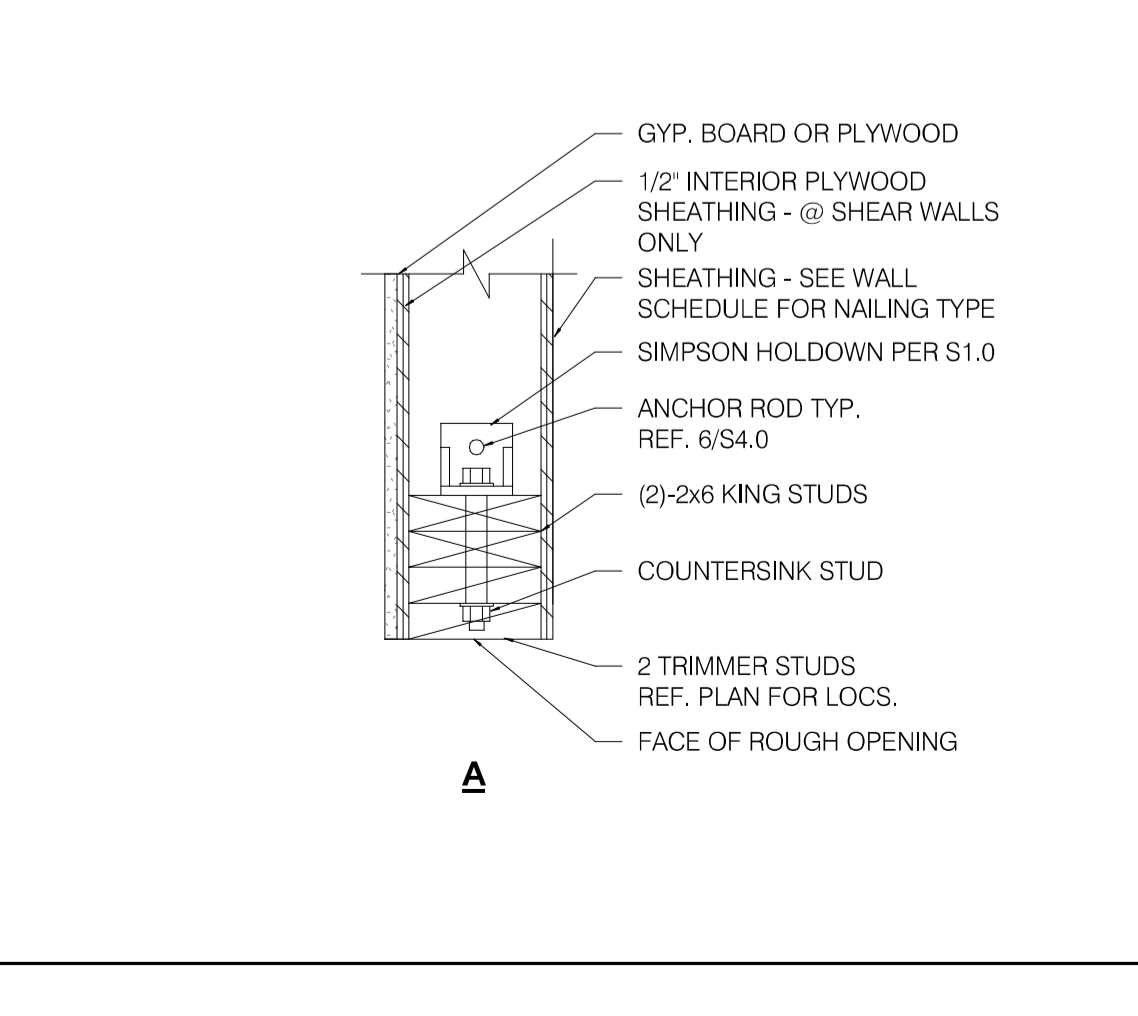
**NOTES:**

1. HOLDOWN CONNECTORS SHALL BE SPECIFIED BY SITE SPECIFIC ARCHITECT/ENGINEER BASED UPON LOADING DATA PROVIDED BY TRUSS DESIGNER.
2. PROVIDE SHOP DRAWINGS PRIOR TO FABRICATION.
3. TRUSS MEMBER SIZES ARE FOR REFERENCE ONLY. ACTUAL SIZE SHALL BE DETERMINED BY TRUSS MANUFACTURER BASED ON ACTUAL LOAD CONDITIONS AND CODES.

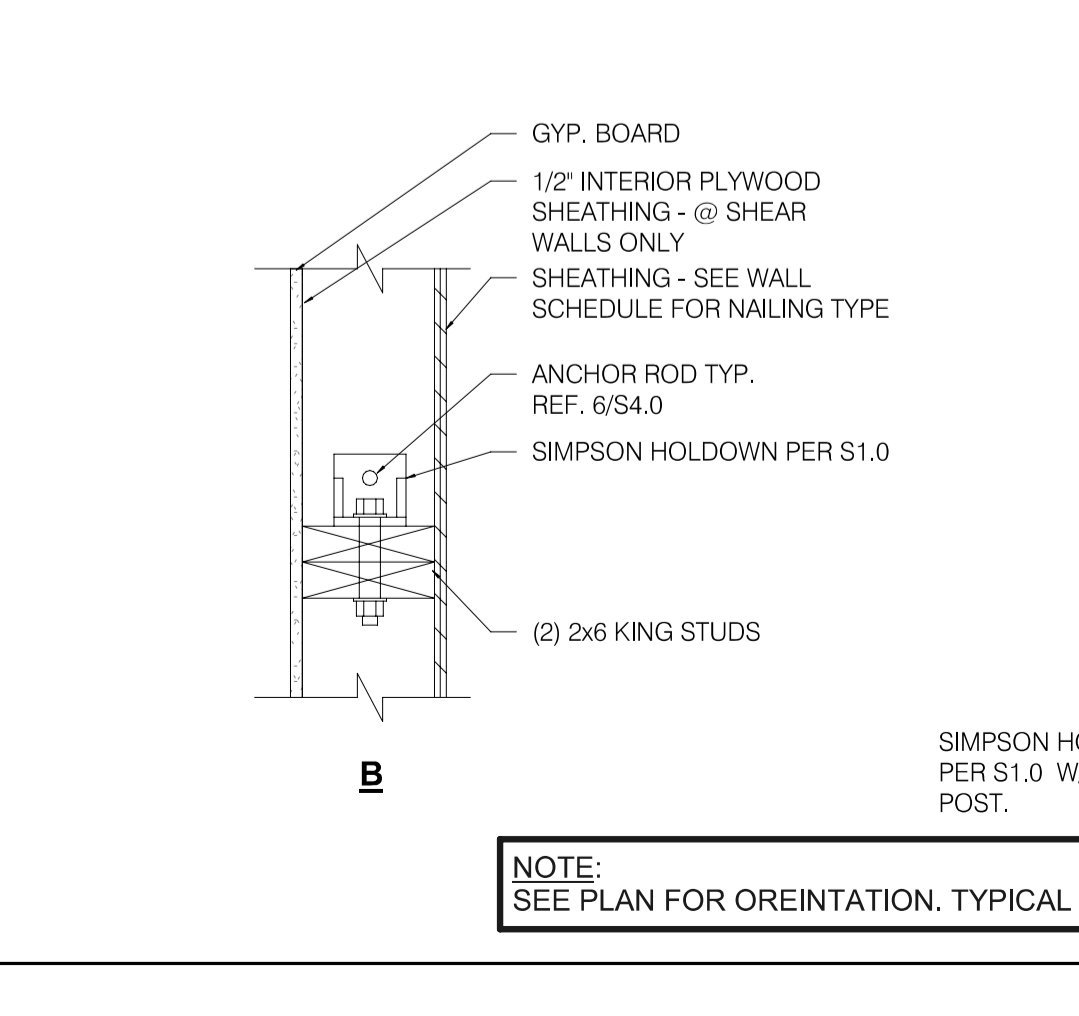
**TRUSS SCHEDULE** 1" = 1'-0" **7**



**TRUSS ELEVATION** 1" = 1'-0" **2**



**HOLDOWN DETAILS** 1" = 1'-0" **4**



**TRUSS LOAD DIAGRAMS** 1" = 1'-0" **3**

DATE	REMARKS
07.19.22	Issued for Bid

CONTRACT DATE: 04.08.21  
BUILDING TYPE: END. MED20  
PLAN VERSION: MARCH 2021  
BRAND DESIGNER: DICKSON  
SITE NUMBER: 313354  
STORE NUMBER: 449523  
PA/PM: JN  
DRAWN BY.: DL  
JOB NO.: 2018088.03

**TACO BELL**  
18550 E. WARREN AVE  
DETROIT, MI 48236

**ENDEAVOR 2.0**  
**STRUCTURAL**  
**DETAILS**

**S4.2**

PLOT DATE: 7/19/2022 1:57:33 PM