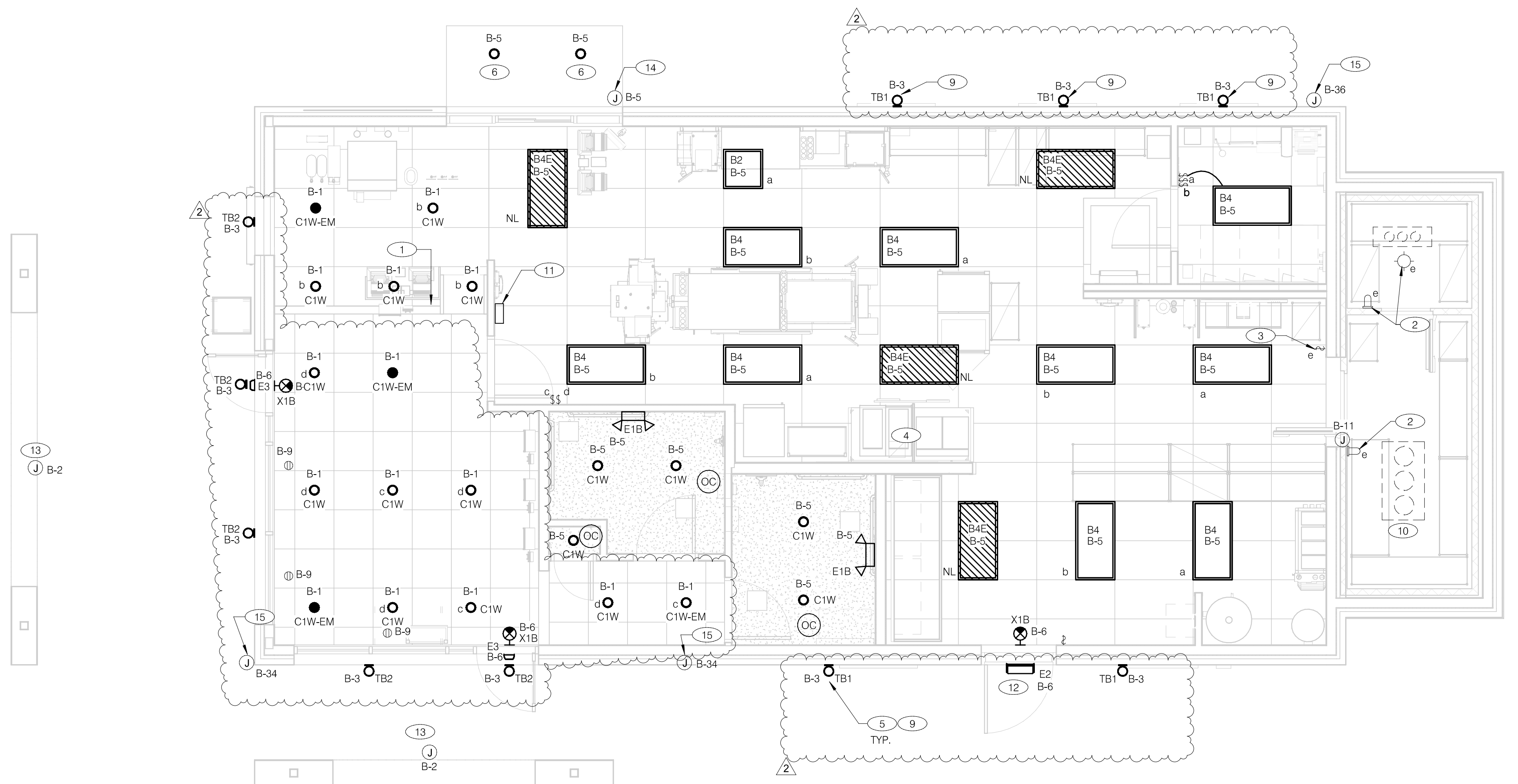
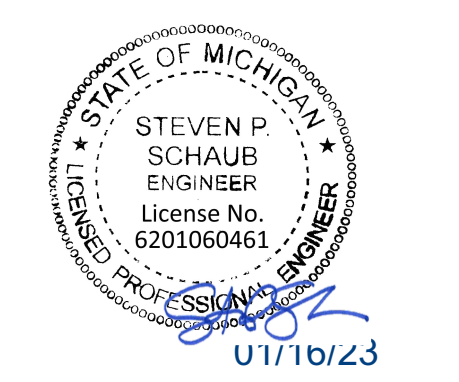


**APPROVED**  
ePLAN  
**PLAN REVIEW**  
Buildings, Safety Engineering  
& Environmental Department  
CITY OF DETROIT  
Date: 02/21/23  
Permit Number: BL 00003-00084  
**GPD GROUP**  
Professional Corporation  
520 S. MAIN STREET, SUIT 2531  
AKRON, OH 44311  
330.572.2100 FAX: 330.572.2102



GENERAL NOTES:  
A. CONFIRM LIGHTING FIXTURE QUANTITIES WITH SUPPLIER.  
B. EMERGENCY AND NORMAL LIGHTING MARKED WITH "NL" SUBSCRIPT SHALL OPERATE CONTINUOUSLY. PROVIDE UNSWITCHED HOT TO NORMAL AND EMERGENCY BALLAST. EMERGENCY LIGHTING NOT MARKED WITH "NL" SUBSCRIPT SHALL OPERATE UNDER CONTROL OF LIGHTING SWITCH AS INDICATED. PROVIDE UNSWITCHED CONSTANT HOT TO EMERGENCY BALLAST AND SWITCHED HOT TO NORMAL BALLAST.  
C. ALL CONDUITS ENTERING OR LEAVING COOLER/FREEZER SHALL BE PROVIDED WITH SEAL-OFF FITTING WITH COMPOUND PER NEC 300-7(a).  
D. ALL INTERIOR LIGHTING CIRCUITS TO BE WIRED THROUGH TBCCB. SEE E6.0 AND E6.1.  
E. CONTRACTOR TO FIELD VERIFY CEILING TYPE AND PROVIDE PROPER MOUNTING HARDWARE.  
F. ALL FIXTURES SUPPLIED WITH LAMPS.  
G. ALL EXTERIOR NON-EMERGENCY LIGHT FIXTURES, BUILDING SIGNS, AND EXTERIOR SIGNS SHALL BE CONTROLLED THROUGH PHOTOCELL AND LIGHTING CONTROL RELAYS. SEE E6.0 AND E6.1 FOR ADDITIONAL DETAILS.  
H.



DATE	REMARKS
07.19.22	Issued for Bid
2 09.09.22	NTP Comments

CONTRACT DATE: 02.28.22  
BUILDING TYPE: END.MED20  
PLAN VERSION: MARCH 2021  
BRAND DESIGNER: DICKSON  
SITE NUMBER: 314481  
STORE NUMBER: 454078  
PA/PM: SM  
DRAWN BY: AJR  
JOB NO.: 2020088.03

**TACO BELL**  
18550 E. WARREN AVE.,  
DETROIT, MI 48236



**ENDEAVOR 2.0 LIGHTING PLAN AND DETAILS**

**E4.0**  
PLOT DATE: 9/19/2022 11:37:01 AM

**ELECTRICAL LIGHTING PLAN** 1/4" = 1'-0" **A**

NO.	MANUFACTURER	CATALOG NUMBER	DESCRIPTION	MOUNTING	LAMP #/TYPE	BALLAST TYPE	ELECTRICAL DATA	REMARKS
A	LSI INDUSTRIES	MRM-LED-12L-SIL-FT-40-70CRI-HL	LED POLE LIGHT	22' LIGHT POLE	LED	NA	120 V/1-187 VA	-
B	LSI INDUSTRIES	MRM-LED-24L-SIL-FT-40-70CRI	LED POLE LIGHT		LED		120 V/1-187 VA	-
B2	ABB	FLP22-D53W40	2X2 LED TROFFER		LED		120 V/1-45 VA	-
B4	ABB	FLP24-D53W40	2X4 LED TROFFER		LED		120 V/1-45 VA	-
B4E	ABB	FLP24-D53W40-EM	2X4 LED TROFFER		LED		120 V/1-45 VA	PROVIDE 90 MIN. BACK UP BATTERY
C1W	MAXLITE	B6IC-AT-W-LED14DR5630KB95	LED TRIM 14W 6" RECESSED 30K 80CRI WHITE TRIM, W/ ELITE B6IC-AT-W 6" IC AIR SHUT HOUSING		LED		120 V/1-14 VA	-
C1W-EM	MAXLITE	B6IC-AT-W-LED14DR5630KB95	LED TRIM 14W 6" RECESSED 30K 80CRI WHITE TRIM, W/ ELITE B6IC-AT-W 6" IC AIR SHUT HOUSING		LED		120 V/1-14 VA	PROVIDE 90 MIN. BACK UP BATTERY
E1B	ELITE	ELM-809-B	EMERGENCY LIGHT FROG EYE - BLACK	WALL, TOP @ 9'-4" U.O.N.	-	EM	120 V/1-12 VA	-
E2	ELITE	ELM-807-SDT-BZ	CAMRAY LED EM WALL MNT, DRK BRNZ, CLD WEATHER	UNIVERSAL	-	EM	120 V/1-16 VA	-
E3	LITHONIA	AFF-PEL-DDBTXD-UVOLT-LTP-SDR T-WT-CW	SELF-POWERED EMERGENCY WALLPACK W/ PHOTOCELL	8'-6"	LED	EM	120 V/1-20 VA	-
TB1	ConTech Lighting	CY6130KMVDWXXXW-B	6" WALL CYLINDER, DOWNLIGHT - WALLWASH	SEE EXTERIOR ELEVATIONS	10W INTEGRATED LED		120 V/1-10 VA	-
TB2	ConTech Lighting	CY6130KMVDWXWCLR-B	6" WALL CYLINDER, DOWNLIGHT - WIDE BEAM		10W INTEGRATED LED		120 V/1-10 VA	-
X1B	LIGHTALARMS	GRANNRB	LED UNIVERSAL MNTG THERMOPLASTIC EXIT, RED LETTERS, BLACK HSNG	UNIVERSAL	-LED	EM	120 V/1-3 VA	-

- 1 PRE-FABRICATED & PRE-FINISHED SOFFIT. REFER TO A7.1 FOR SPECIFICS. (OPTIONAL).
- 2 FOR LIGHTING FIXTURES, CONDUIT, CONDUCTORS AND INSTALLATION RESPONSIBILITIES, REFER TO SCOPE OF WORK.
- 3 FIXTURE AND SWITCH FACTORY INSTALLED WITH UNIT. G.C. TO COMPLETE CIRCUITING.
- 4 EXHAUST HOOD LIGHT FIXTURES SUPPLIED WITH HOOD AND MTD IN PRE-WIRED J-BOX. COMPLETE CIRCUITING PER SHEET E6.1.
- 5 COORD. J-BOX LOCATION WITH WOOD FRAMING SO IT REMAINS CONCEALED BEHIND FIXTURE. VERIFY MOUNTING HEIGHT WITH ARCH. DWGS.
- 6 PROVIDE POWER TO DRIVE THRU CANOPY LIGHTING FIXTURES. COORDINATE EXACT LOCATION AND REQUIREMENTS WITH CANOPY VENDOR AND CONSTRUCTION SUPERVISOR PRIOR TO CONNECTIONS.
- 7 NOT USED.
- 8 NOT USED.
- 9 REFER TO ARCHITECTURAL EXTERIOR ELEVATIONS ON A4.0 AMD A4.1 FOR DIMENSIONED LOCATION OF FIXTURE.
- 10 SEAL ALL ELECTRICAL CONDUITS INTO THE WALK-IN COOLER.
- 11 ALERT LIGHT - ONLY APPLIES WHEN A GEN IV POWER SOAK IS USED. DISREGARD IF GEN III POWER SOAK IS USED. SEE SHEET E3.0 FOR POWER REQUIREMENTS.
- 12 MOUNT "E3" AT 8'-6" A.F.G. TO CENTER OF FIXTURE.
- 13 VERIFY POWER CONNECTION AND POWER REQUIREMENTS WITH MANUFACTURER AND SIGN VENDOR.
- 14 PROVIDE POWER CONNECTION TO CANOPY AT FACTORY INSTALLED DISCONNECT SWITCH FOR CANOPY LIGHTS. LIGHTS ARE FURNISHED WITH CANOPY. PROVIDE ALL REQUIRED FIELD WIRING. COORDINATE REQUIREMENTS WITH MANUFACTURER.
- 15 PROVIDE POWER CONNECTION TO PURPLE WALLWASH LIGHTS FURNISHED BY SIGN VENDOR. PROVIDE ALL REQUIRED FIELD WIRING. CONTROL FIXTURES WITH EXTERIOR LIGHTING FIXTURES. COORDINATE EXACT LOCATIONS WITH ARCHITECTURAL ELEVATIONS. COORDINATE REQUIREMENTS WITH VENDOR.

**KEY NOTES - ELECTRICAL LIGHTING PLAN AND SCHEDULE** NTS **B**