

# SMOKEY BONES

**DESCRIPTION**  
WEST ELEVATION (STREET SIDE)

STACKED CHANNEL LETTERS  
LED INTERNALLY ILLUMINATED  
FRONT LIT & REVERSE HALO ILLUMINATED  
BACK RED OUTLINE PLATE FOR RED REFLECTION  
MOUNTED ON BLACK ALUMINUM BACKER W/ CAB  
CENTERED ON WALL  
93.67 SF

(2)SECTIONS RED LED BORDER TUBING  
41' 10" O.A. LF

(2)SECTIONS RED LED COVE DOWN LIGHTING  
38' 4-1/2" O.A. LF

**RED LED BORDER TUBING**

SPECIFICATIONS	
Beam Angle	120° High Dome Lambertian
Certifications	UL E cUL Recognized (SAM Manual), CE, RoHS
Dimensions	1.25"W x .96"L x 2.1875"H
Fastening	Mounting Brackets (3 ea.)
Input	24VDC
Max Mods (Series)	2 units max per series
Operating Temp	-40° to +60°C
Power	22W per unit
Power Supply	P-LED 24VDC
Protection Grade	IP67
Run Footage	4, 96' units/96W/24V PS
Warranty	5-Year Product / 5-Year Limited Labor

**FEATURES**

- IP67 LED 24V Light Tape
- Indoor/outdoor application
- Field cuttable
- Evenly illuminates
- Bring an extra punch of color to your business
- Rigid, extruded aluminum
- For use with our Universal 96W power supply

NOTE: This product is rigid and will only work on straight and flat surfaces. It will not be able to be used on a curved surface of any kind. To ensure the necessary quantities are ordered, do not divide the total perimeter (in feet) by 8; this will likely result in a shortage during installation. For assistance on how to correctly calculate the quantities needed, please reach out to our customer service or layout department at (325) 227-4577 or submit your question via email to info@sp-led.com

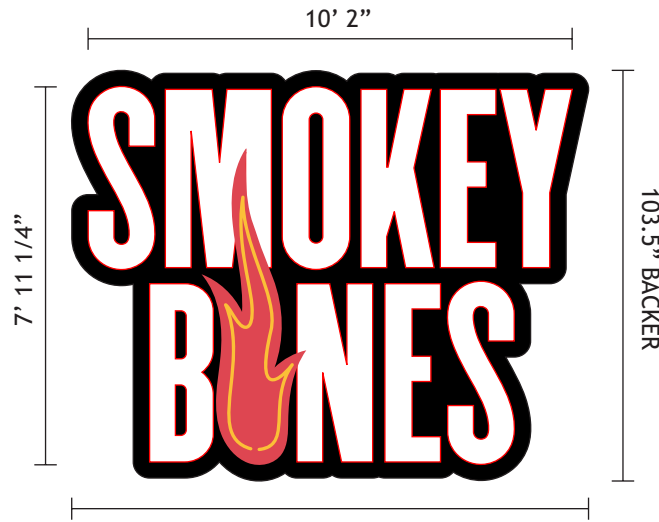
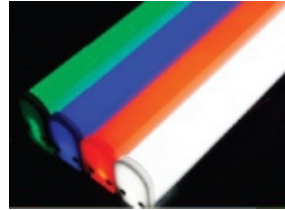
**PRODUCT OPTIONS**

Color	Length	W/Fl.	W/Unit	Max Power Load 96W/24V	Part
6300K*	96"	2.75	22	4 units	B-SR2-500-09663
Red	96"	2.75	22	4 units	B-SR2-500-096RD
Blue	96"	2.75	22	4 units	B-SR2-500-096BL
Green	96"	2.75	22	4 units	B-SR2-500-096GR
RGB	96"	2.75	22	4 units	B-SR2-500-0963C

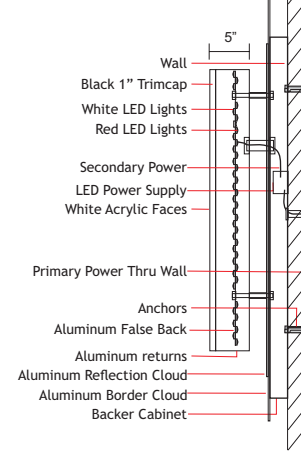
\*6300K = Pure White  
Additional colors available upon request. Lead times may vary.

**LENS AND LED STRIP BREAKDOWN**

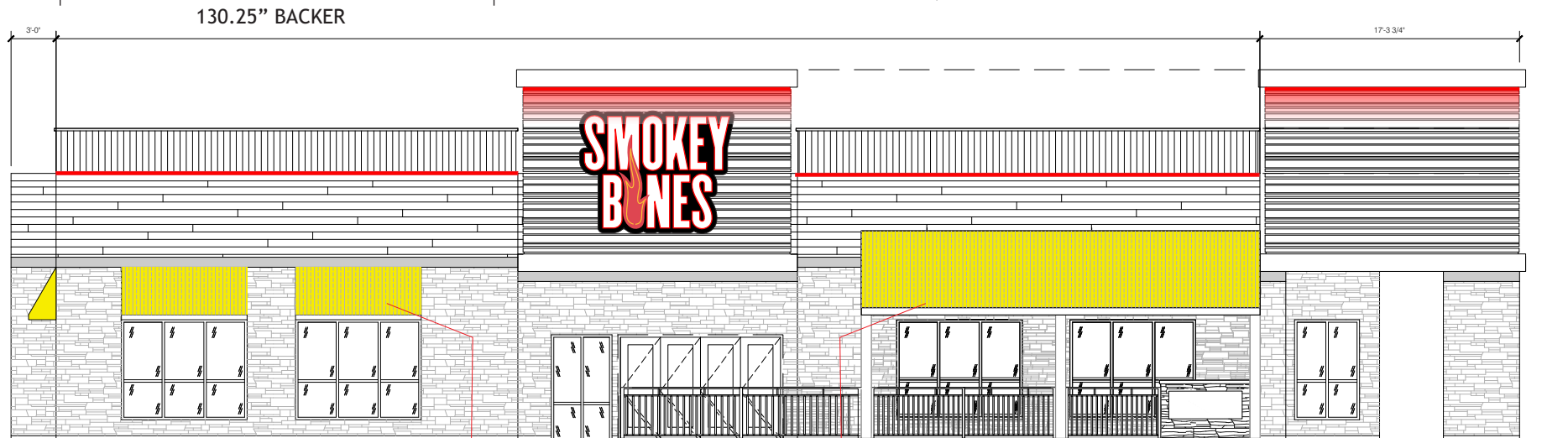
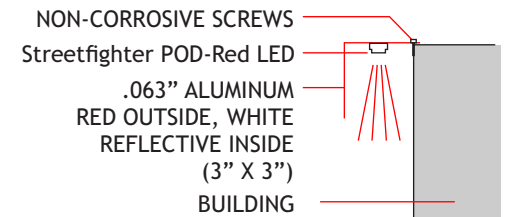
Product	Lens Color	LED Color
White	White	6300K
Red	Red	Red
Blue	Blue	6300K
Green	Green	6300K
RGB	White	RGB



**CHANNEL LETTER SECTION VIEW**



**RED LED COVE DOWN LIGHTING**



WEST ELEVATION (STREET SIDE)

**CLOTH AWNINGS** 42"H X 100"W X 22" PROJECTION  
QTY: 2  
COLOR: BLACK  
\*SHOWN IN YELLOW FOR CLARITY

**CLOTH AWNINGS** 5' 3-1/2"H X 26' 6-1/4" W  
QTY: 1  
COLOR: BLACK  
\*SHOWN IN YELLOW FOR CLARITY

**CLIENT REVIEW STATUS**

APPROVED

REVISE & RESUBMIT

NAME: \_\_\_\_\_ DATE: \_\_\_\_\_

THIS IS NOT A SHOP DRAWING

 1917 HENRY AVE. SW. CANTON, OH 44706 P: 330-455-9995 F: 330-455-9994 www.archersign.com	<b>CUSTOMER:</b> SMOKEY BONES	<b>LOCATION:</b> CHAMPAIGN, IL	<b>SALESPERSON:</b> JERRY ARCHER	<b>DRAWN BY:</b> TAYLRE S.	<b>REVISIONS:</b>	<small>THIS ORIGINAL DESIGN IS THE EXCLUSIVE PROPERTY OF THE ARCHER SIGN CORPORATION, AND IS PROTECTED BY FEDERAL COPYRIGHT LAWS. ANY REPRODUCTION, OR CONSTRUCTION OF ANY SIGN SIMILAR TO THE ONE EMBODIED HERE IN, IS EXPRESSLY FORBIDDEN AND WILL RESULT IN A PENALTY FEE OF UP TO TEN PERCENT OF THE TOTAL JOB COST, PAYABLE TO THE ARCHER SIGN CORPORATION.</small>
	<b>DATE:</b> 11/03/2022	<b>PROJECT MANAGER:</b> MATT VERBECK	<b>FILE LOCATION:</b>	<b>MISC INFORMATION:</b>	<small>NOTE: ALL ILLUMINATED SIGNS MANUFACTURED FOR 120 VOLT CIRCUIT (UNLESS SPECIFIED).</small>	

**COLORS**

	WHITE
	3M 3630-163 SCARLET
	PANTONE BLACK 6 C
	3M 3630-235 AUTUMN YELLOW

**DESCRIPTION**  
SOUTH ELEVATION (MAIN ENTRANCE)

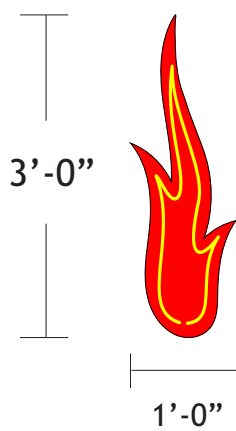
STACKED CHANNEL LETTERS  
LED INTERNALLY ILLUMINATED  
FRONT LIT & REVERSE HALO ILLUMINATED  
BACK RED OUTLINE PLATE FOR RED REFLECTION  
MOUNTED ON BLACK ALUMINUM BACKER W/ CAB  
CENTERED ON WALL  
93.67 SF

(2) SECTIONS RED LED BORDER TUBING  
50' 4" O.A. LF

(2) SECTIONS RED LED COVE DOWN LIGHTING  
31' 5" O.A. LF

(2) FLAME SCONCES  
LED INTERNAL ILLUMINATED  
CHANNEL UNIT  
FRONT FACE LIT W/ VINYL  
GRAPHICS  
RED HALO ILLUMINATION FROM  
REAR OF UNIT  
POST MOUNTED 2" STAND OFF  
3' X 1' EA  
3 SF EA

**FLAME SCONSE**



**RED LED BORDER TUBING**

**SPECIFICATIONS**

Beam Angle	120° High Dome Lambertian
Certifications	UL & cUL Recognized (SAM Manual), CE, RoHS
Dimensions	1.25" W x .96" L x 2.1875" H
Fastening	Mounting Brackets (3 ea.)
Input	24VDC
Max Mode (Series)	2 units max per series
Operating Temp	-40° to +60° C
Power	22W per unit
Power Supply	PL-LED 24VDC
Protection Grade	IP67
Run Footage	4, 96' units/96W/24V PS
Warranty	5-Year Product / 5-Year Limited Labor

**PRODUCT OPTIONS**

Color	Length	W/Ft	W/Unit	Max Power Load	Part
6300K*	96"	2.75	22	4 units	B-SR2-500-096G3
Red	96"	2.75	22	4 units	B-SR2-500-096R2
Blue	96"	2.75	22	4 units	B-SR2-500-096B4
Green	96"	2.75	22	4 units	B-SR2-500-096GR
RGB	96"	2.75	22	4 units	B-SR2-500-0963C

**LENS AND LED STRIP BREAKDOWN**

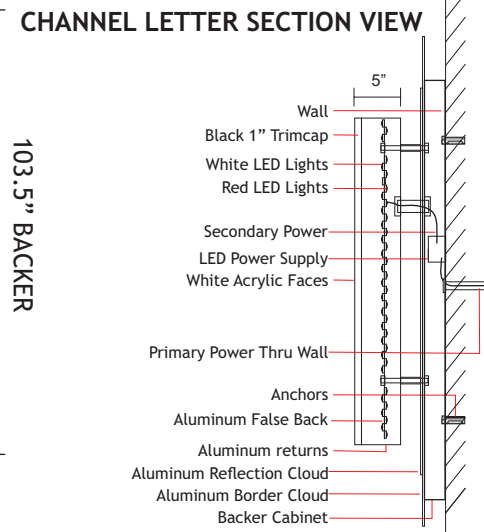
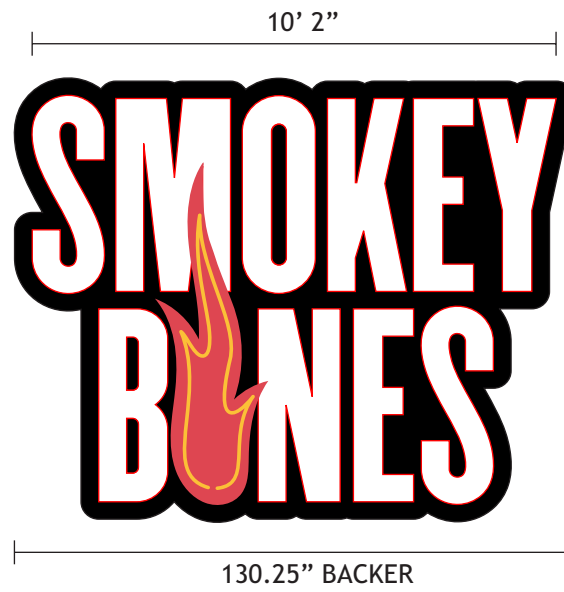
Product	Lens Color	LED Color
White	White	6300K
Red	Red	Red
Blue	Blue	6300K
Green	Green	6300K
RGB	White	RGB

**FEATURES**

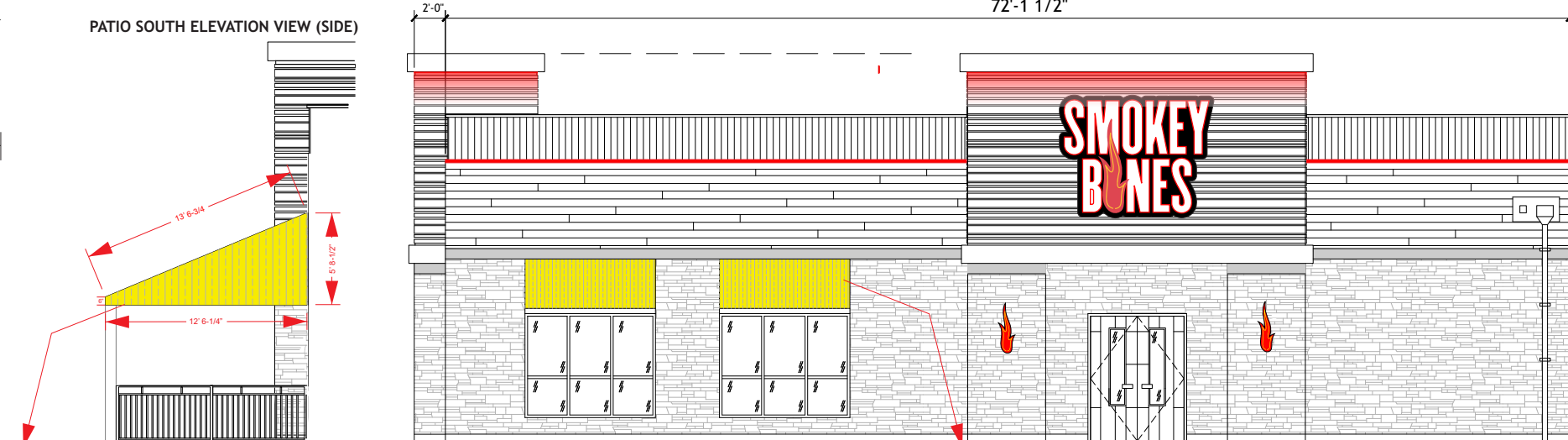
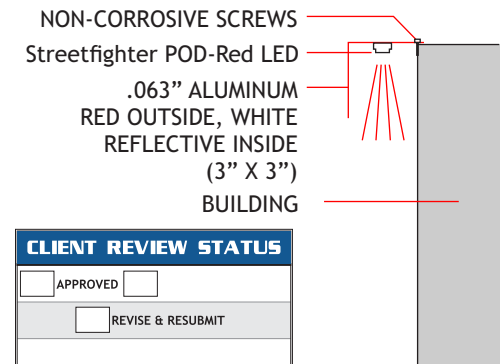
- IP67 LED 24V Light Tape
- Indoor/outdoor application
- Field cuttable
- Evenly illuminates
- Bring an extra punch of color to your business
- Rigid, extruded aluminum
- For use with our Universal 96W power supply

NOTE: This product is rigid and will only work on straight and flat surfaces. It will not be able to be used on a curved surface of any kind. To ensure the necessary quantities are ordered, do not divide the total perimeter (in feet) by 6. This will likely result in a shortage during installation. For assistance on how to correctly calculate the quantities needed, please reach out to our customer service or layout department at (335) 237-4377 or submit your question via email to info@led.com

\*6300K = Pure White  
Additional colors available upon request. Lead times may vary.



**RED LED COVE DOWN LIGHTING**



**CLOTH AWNINGS** 5' 3-1/2" H X 26' 6-1/4" W  
QTY: 1  
COLOR: BLACK  
\*SHOWN IN YELLOW FOR CLARITY

**CLOTH AWNINGS** 5' 3-1/2" H X 26' 6-1/4" W  
QTY: 2  
COLOR: BLACK  
\*SHOWN IN YELLOW FOR CLARITY

**COLORS**

- WHITE
- 3M 3630-163 SCARLET
- PANTONE BLACK 6 C
- 3M 3630-235 AUTUMN YELLOW

**CLIENT REVIEW STATUS**

APPROVED

REVISE & RESUBMIT

NAME: \_\_\_\_\_ DATE: \_\_\_\_\_

THIS IS NOT A SHOP DRAWING

**ARCHER SIGN CORPORATION**  
1917 HENRY AVE. SW, CANTON, OH 44706  
P: 330-455-9995 F: 330-455-9994  
www.archersign.com

<b>CUSTOMER:</b> SMOKEY BONES	<b>LOCATION:</b> CHAMPAIGN, IL	<b>SALESPERSON:</b> JERRY ARCHER	<b>DRAWN BY:</b> TAYLRE S.
<b>DATE:</b> 11/03/2022	<b>PROJECT MANAGER:</b> MATT VERBECK	<b>FILE LOCATION:</b>	<b>MISC INFORMATION:</b>

REVISIONS:

THIS ORIGINAL DESIGN IS THE EXCLUSIVE PROPERTY OF THE ARCHER SIGN CORPORATION, AND IS PROTECTED BY FEDERAL COPYRIGHT LAWS. ANY REPRODUCTION, OR CONSTRUCTION OF ANY SIGN SIMILAR TO THE ONE EMBODIED HERE IN, IS EXPRESSLY FORBIDDEN AND WILL RESULT IN A PENALTY FEE OF UP TO TEN PERCENT OF THE TOTAL JOB COST, PAYABLE TO THE ARCHER SIGN CORPORATION.

NOTE: ALL ILLUMINATED SIGNS MANUFACTURED FOR 120 VOLT CIRCUIT (UNLESS SPECIFIED).

**DESCRIPTION**  
SOUTH ELEVATION (MAIN ENTRANCE)

LINEAR CHANNEL LETTERS  
LED INTERNALLY ILLUMINATED  
FRONT LIT & REVERSE HALO ILLUMINATED  
BACK RED OUTLINE PLATE FOR RED REFLECTION  
MOUNTED ON BLACK ALUMINUM BACKER W/ CAB  
CENTERED ON WALL ABOVE AWNINGS  
76.4 SF

(2) SECTIONS RED LED BORDER TUBING  
70' 3" O.A. LF

(1) SECTION RED LED COVE DOWN LIGHTING  
8' 9'-7/16" O.A. LF

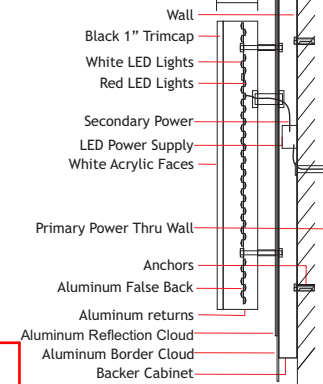
2' 11 3/4"



5' 1"

14' 11 3/4"

**CHANNEL LETTER SECTION VIEW**



CLOTH AWNINGS  
QTY: 2  
COLOR: BLACK  
\*SHOWN IN YELLOW FOR CLARITY

**RED LED BORDER TUBING**

**SPECIFICATIONS**

Beam Angle	120° High Dome Lambertian
Certifications	UL & CUL Recognized (SAM Manual), CE, RoHS
Dimensions	1.25"W x 96"L x 2.1875"H
Fastening	Mounting Brackets (3 ea.)
Input	24VDC
Max Mods (Series)	2 units max per series
Operating Temp	-40° to +60°C
Power	22W per unit
Power Supply	P-LED 24VDC
Protection Grade	IP67
Rain Footage	4.96' units/16W/24V PS
Warranty	5-Year Product / 5-Year Limited Labor

- FEATURES**
- IP67 LED 24V Light Type
  - Indoor/outdoor application
  - Field cuttable
  - Evenly Illuminates
  - Bring an extra punch of color to your business
  - Rigid, extruded aluminum
  - For use with our Universal 96W power supply
- NOTE: This product is rigid and will only work on straight and flat surfaces. It will not be able to be used on a curved surface of any kind. To ensure the necessary quantities are ordered, do not divide the total perimeter (in feet) by 6; this will likely result in a shortage during installation. For assistance on how to correctly calculate the quantities needed, please reach out to our customer service or liquid department at (330) 327-4577 or submit your question via email to info@led.com

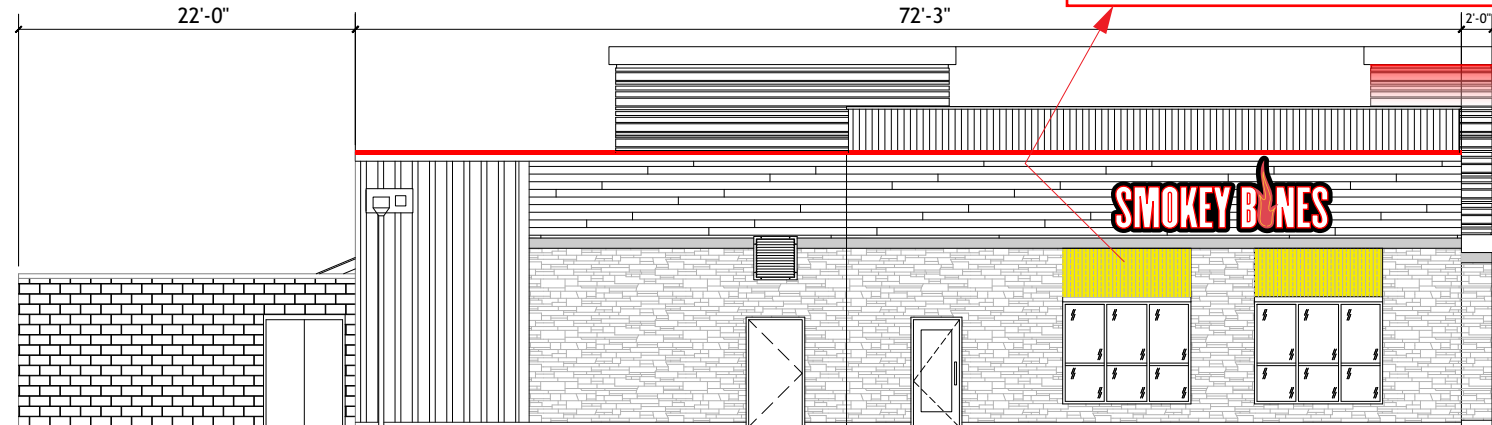
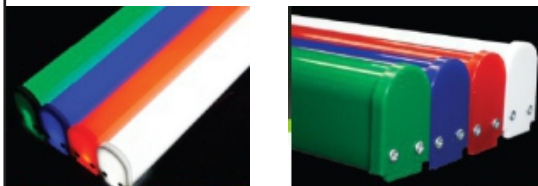
**PRODUCT OPTIONS**

Color	Length	W/Ft.	W/Unit	Max Power Load	Part
6300K*	96"	2.75	22	4 units	B-582-500-096G3
Red	96"	2.75	22	4 units	B-582-500-096R2
Blue	96"	2.75	22	4 units	B-582-500-096B1
Green	96"	2.75	22	4 units	B-582-500-096G2
RGB	96"	2.75	22	4 units	B-582-500-096G3

**LENS AND LED STRIP BREAKDOWN**

Product	Lens Color	LED Color
White	White	6300K
Red	Red	Red
Blue	Blue	6300K
Green	Green	6300K
RGB	White	RGB

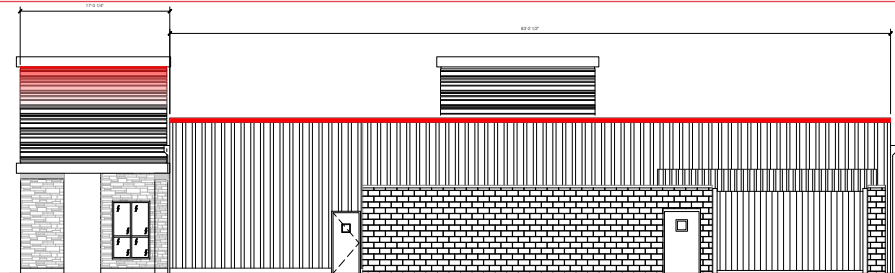
\*6300K - Pure White  
Additional colors available upon request. Lead times may vary.



**NORTH ELEVATION (BACK ENTRANCE)**

**DESCRIPTION**  
EAST ELEVATION (REAR)

(1) SECTION RED LED BORDER TUBING  
83' 2-1/2" O.A. LF



EAST ELEVATION (REAR)

**CLIENT REVIEW STATUS**

APPROVED

REVISE & RESUBMIT

NAME: \_\_\_\_\_ DATE: \_\_\_\_\_

THIS IS NOT A SHOP DRAWING

**ARCHER SIGN CORPORATION**  
1917 HENRY AVE. SW. CANTON, OH 44706  
P: 330-455-9995 F: 330-455-9994  
www.archersign.com

**CUSTOMER:**  
SMOKEY BONES

**DATE:**  
11/03/2022

**LOCATION:**  
CHAMPAIGN, IL

**PROJECT MANAGER:**  
MATT VERBECK

**SALESPERSON:**  
JERRY ARCHER

**FILE LOCATION:**

**DRAWN BY:**  
TAYLRE S.

**MISC INFORMATION:**

**REVISIONS:**

THIS ORIGINAL DESIGN IS THE EXCLUSIVE PROPERTY OF THE ARCHER SIGN CORPORATION, AND IS PROTECTED BY FEDERAL COPYRIGHT LAWS. ANY REPRODUCTION, OR CONSTRUCTION OF ANY SIGN SIMILAR TO THE ONE EMBODIED HEREIN, IS EXPRESSLY FORBIDDEN AND WILL RESULT IN A PENALTY FEE OF UP TO TEN PERCENT OF THE TOTAL JOB COST, PAYABLE TO THE ARCHER SIGN CORPORATION.

NOTE: ALL ILLUMINATED SIGNS MANUFACTURED FOR 120 VOLT CIRCUIT (UNLESS SPECIFIED).

**COLORS**

- WHITE
- 3M 3630-163 SCARLET
- PANTONE BLACK 6 C
- 3M 3630-235 AUTUMN YELLOW