

LIS
 ARCHITECTURE
 ENGINEERING
 LAND SURVEYING SERVICE, LLC
 AA 260202040 CA NO. 6853 LB1057
 ARCHITECTURE / ENGINEERING OFFICE
 2572 West State Road 426
 Suite 200 Ocala, FL 32765
 Phone: (352) 402-4040
 facsimile: (352) 244-9419
 ENGINEERING OFFICE
 21430 Palm Beach Blvd.
 Avon, FL 32820
 Phone: (407) 923-9244
 facsimile: (407) 923-9828

THIS ITEM HAS BEEN ELECTRONICALLY SIGNED AND SEALED BY ROBERT WAYNE CASE, PE ON JUNE 24, 2022. USING A DIGITAL SIGNATURE. PRINTED COPIES OF THIS DOCUMENT ARE NOT CONSIDERED SIGNED AND SEALED AND THE SIGNATURE MUST BE VERIFIED ON ANY ELECTRONIC COPIES.

Digitally signed by ROBERT W. CASE
 Date: 2022.09.12 12:07:50 -04'00'

ROBERT WAYNE CASE
 FLORIDA PE #44643

PLAN SET REVISIONS:

▲	06/22/22 - BUILDING COMMENTS
▲	09/12/22 - BUILDING COMMENTS
▲	
▲	
▲	
▲	
▲	
▲	

CONTRACT DATE: 12-18-2019
 BUILDING TYPE: Kb 30-19
 PLAN VERSION:
 SITE NUMBER:
 ENTITY NUMBER:
 STORE NUMBER:
 LIS PROJECT: 2019-303

WASTE & VENT PLAN 1/4"=1'-0" **A**

- | | | |
|--|--|---|
| <p>A. NO ROOF PENETRATIONS PERMITTED WITHIN ROOF WATER PLY. REFER TO ROOF PLAN FOR LOCATIONS.</p> <p>B. REFER TO RISER DIAGRAM ON SHEET P5.0 FOR ALL WASTE AND VENT SIZES.</p> <p>C. STORM WATER PIPING IS SIZED FOR A RAINFALL OF 4" PER HOUR. ADJUST ROOF DRAIN (RD-1) / OVERFLOW DRAIN (OPD-1) SIZE, AND STORM PIPE SIZE, PER THE LOCAL RAINFALL REQUIREMENTS AND BY THE AUTHORITY HAVING JURISDICTION. SEE KEYNOTES 15 AND 16, THIS SHEET.</p> <p>D. INSULATE ALL HORIZONTAL RUNS OF STORM DRAINAGE PIPING ABOVE THE CEILING OR EXPOSED WITH 1" CLOSED CELLULAR INSULATION WITH VAPOR BARRIER JACKET THAT CAN BE PAINTED.</p> <p>E. COORDINATE LOCATION OF STORM WATER PIPING ABOVE CEILING WITH ALL TRADES PRIOR TO INSTALLATION.</p> | <p>1 PROVIDE FLOOR SINK, IN LIEU OF HUB DRAIN, IF REQUIRED BY LOCAL CODE.</p> <p>2 PROVIDE CONDENSATE LINE AND DRAIN LINE FROM ICE MACHINE TO FLOOR SINK. PROVIDE AIR GAP PER LOCAL CODE.</p> <p>3 PROVIDE WASTE LINES FROM BEVERAGE UNIT TO FLOOR SINK. PROVIDE AIR GAP PER LOCAL CODE.</p> <p>4 PROVIDE 3/4" PVC OR COPPER CONDENSATE FROM DRAIN PROVIDED BY VENDOR TO RUN INSIDE WALL AND OUTFALL AT MOP SINK/FLOOR SINK (HEAT ROPE IS SUPPLIED W/ FREEZER CONDENSATE). EXPOSED PORTION OF CONDENSATE SHALL BE COPPER.</p> <p>5 PVC OR COPPER CONDENSATE DRAIN FROM HVAC UNITS ON ROOF. RUN ABOVE CEILING TO MOP SINK/FLOOR SINK. PIPING SHALL SLOPE 1/4" PER FOOT AND SHALL BE INSULATED WITH 1" CLOSED CELLULAR INSULATION. REFER TO RISER DIAGRAM ON SHEET P5.0 FOR PIPE SIZES.</p> <p>6 ENTIRE RUN OF DRAIN LINES TO INLET OF EXTERIOR GREASE INTERCEPTOR AND OUTLET OF INTERCEPTOR TO CONNECTION AT SANITARY MAIN SHALL BE SCHEDULE 40 PVC DWV OR AS REQUIRED BY THE AUTHORITY HAVING JURISDICTION.</p> <p>7 NOTE NOT USED.</p> <p>8 4" VENT UP THROUGH ROOF, COORDINATE W/ STRUCTURAL.</p> <p>9 PIPE 3-COMPARTMENT SINK TO GREASE WASTE PIPING.</p> | <p>10 1-1/2" CONDENSATE DRAIN DOWN FROM RTU. SEE DETAIL 13 ON DWG. P6.0.</p> <p>11 RUN DRAIN LINE FROM S/S DRINK MACHINE THRU WALL OPENING TO OUTFALL AT FLOOR SINK BENEATH D/T DRINK MACHINE.</p> <p>12 NOT USED.</p> <p>13 1-1/2" CONDENSATE DRAIN PIPE DOWN TO MOP SINK/HUB DRAIN. PROVIDE AIR GAP AS REQUIRED BY CODE. IF REQUIRED RUN CONDENSATE PIPING TO EXTERIOR DRYWELL, RETENTION AREA OR STORM SEWER AS DIRECTED BY THE AUTHORITY HAVING JURISDICTION.</p> <p>14 WATER HEATER CONDENSATE. SEE DETAIL 2 / P6.0.</p> <p>15 NOTE NOT USED.</p> <p>16 NOTE NOT USED.</p> <p>17 HEAT TRACE WASTE PIPING BELOW FREEZER/COOLER.</p> |
|--|--|---|

KFC
 OAKLEAF CORNER OUTPARCEL 3
 DUVAL COUNTY, FL



WASTE AND VENT PLAN

P2.0

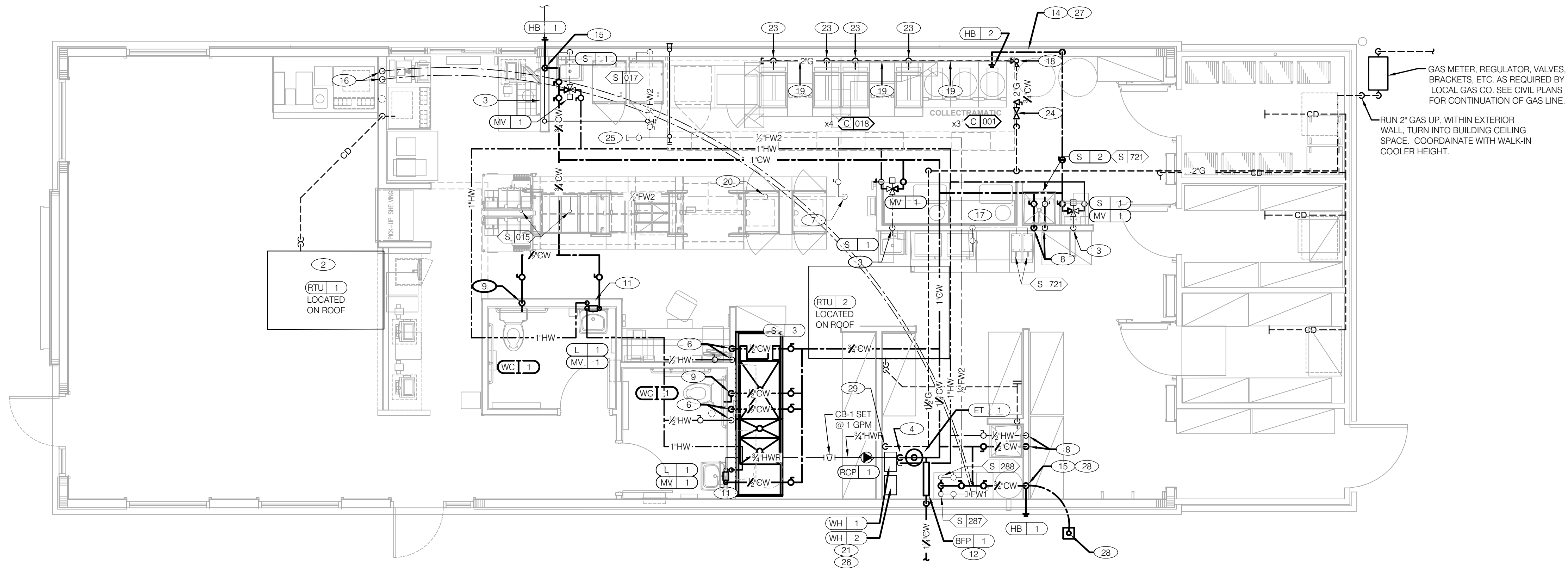
NOT USED E

NOT USED D

WASTE & VENT PLAN NOTES C

KEY NOTES B DATE: 03/29/2022

B-22-511575.000
 RCV: 9/12/2022 2:26 PM



ENGINEERING OFFICE
 21450 Palm Beach Blvd.
 Alva, Fla. 33920
 Phone: (239) 693-9244
 facsimile: (239) 693-9828

ARCHITECTURE / ENGINEERING OFFICE
 Suite 2064 Ocala, FL 32765
 Phone: (321) 244-0402
 facsimile: (321) 244-9419

LAND INVESTMENT SERVICES, LLC
 AA 26002040 CA NO: 6853 LB 1057

THIS ITEM HAS BEEN ELECTRONICALLY SIGNED AND SEALED BY ROBERT WAYNE CASE, PE ON JUNE 24, 2022, USING A DIGITAL SIGNATURE. PRINTED COPIES OF THIS DOCUMENT ARE NOT CONSIDERED SIGNED AND SEALED AND THE SIGNATURE MUST BE VERIFIED ON ANY ELECTRONIC COPIES.

Digitally signed by ROBERT W CASE
 Date: 2022.09.12 12:08:12 -04'00'


ROBERT WAYNE CASE
 FLORIDA PE #44643

PLAN SET REVISIONS:

▲	06/22/22 - BUILDING COMMENTS
▲	09/12/22 - BUILDING COMMENTS
▲	
▲	
▲	
▲	
▲	
▲	

CONTRACT DATE: 12-18-2019
 BUILDING TYPE: Kb 30-19
 PLAN VERSION:
 SITE NUMBER:
 ENTITY NUMBER:
 STORE NUMBER:
 LIS PROJECT: 2019-303

KFC
 OAK-LEAF CORNER OUTPARCEL 3
 DUVAL COUNTY, FL



Kb 30-19

WATER AND GAS PLAN

P3.0

WATER & GAS PLAN 1/4"=1'-0" A

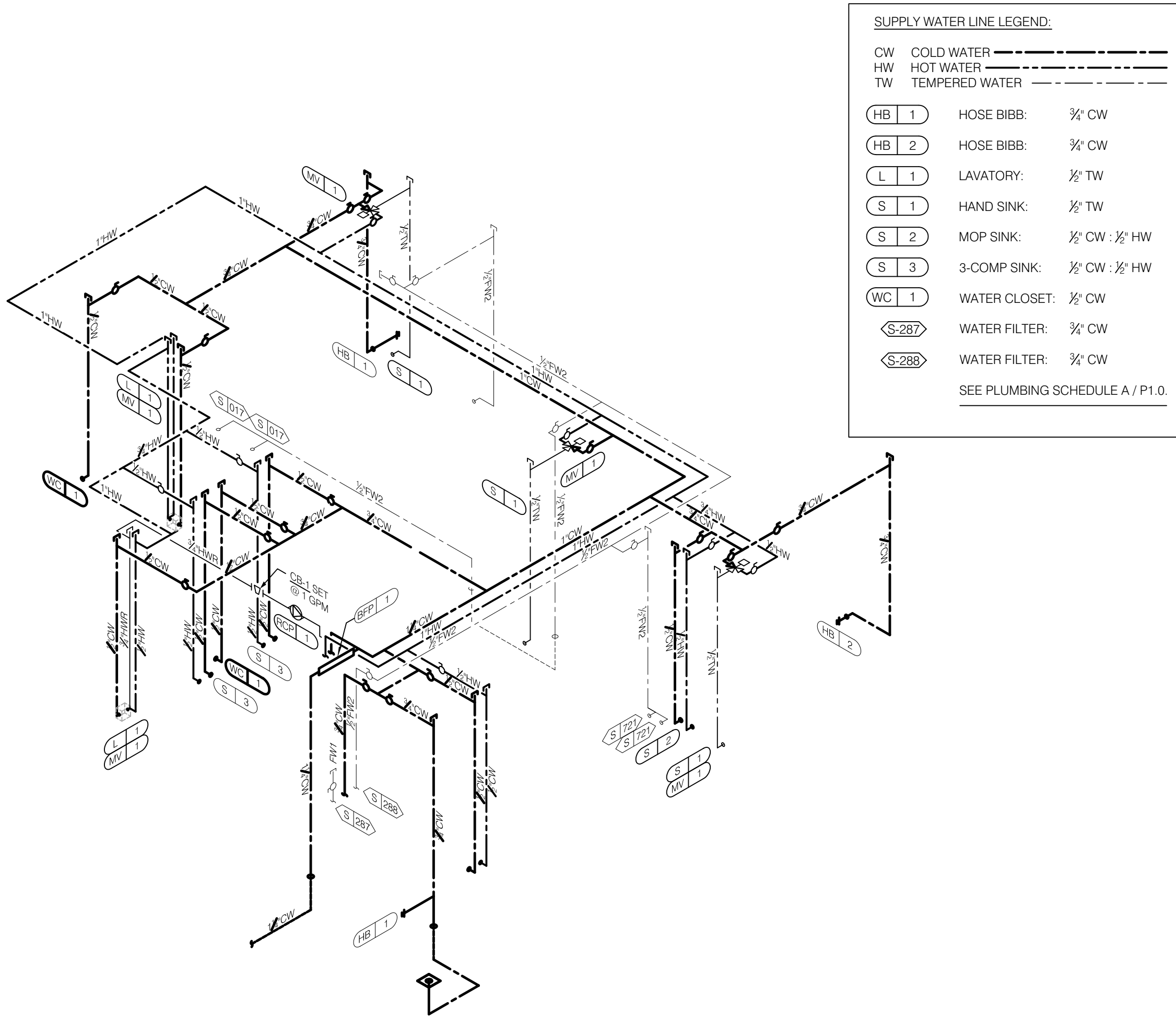
- A. WATER DISTRIBUTION PIPING IS SHOWN ABOVE FINISH CEILING. UNDER SLAB DISTRIBUTION ALLOWED AT CONTRACTOR OPTION. COORDINATE ALL DETAILS.
- B. NO ROOF PENETRATIONS PERMITTED WITHIN THE ROOF 'WATER VALLEYS'. REFER TO ROOF PLAN FOR LOCATIONS.
- C. REFER TO SHT P4.0 FOR ROUGH-IN LOCATIONS.
- D. REFER TO SHEET P5.0 FOR WATER AND GAS ISOMETRIC DRAWINGS.
- E. REFER TO RISER DIAGRAM ON SHEET P5.0 FOR ALL WATER SUPPLY PIPING SIZES.
- F. REFER TO RISER DIAGRAM ON SHEET P5.0 FOR ALL GAS PIPING SIZES.

- (1) NOT USED
- (2) NOT USED
- (3) 1/2" TEMPERED WATER LINE DOWN IN WALL TO HAND SINK.
- (4) 1" HOT AND COLD WATER LINES TO WATER HEATER.
- (5) 1/2" HOT AND COLD WATER LINES IN DOWN WALL TO PREP SINK.
- (6) 1/2" HOT AND COLD WATER LINES DOWN IN WALL TO THREE COMPARTMENT SINK.
- (7) 1/2" FILTERED WATER LINE DOWN IN WALL TO BELOW SLAB. DO NOT INSTALL ANY JOINTS BELOW SLAB.
- (8) 1/2" HOT AND COLD WATER LINES DOWN IN WALL TO THE MOP SINK.
- (9) 1/2" COLD WATER LINE DOWN IN WALL TO WATER CLOSET FLUSHOMETER TANK.
- (10) REDUCED PRESSURE BACKFLOW PREVENTER LOCATED ABOVE THE CEILING IF ALLOWED BY LOCAL UTILITY. PROVIDE SHUT-OFF VALVES AT BOTH SIDES OF BACKFLOW PREVENTER. PIPE RELIEF TO HUB DRAIN. VERIFY LOCATIONS WITH CIVIL DWGS. VERIFY WATER SERVICE REQUIREMENTS WITH CITY.
- (11) 1/2" HOT WATER LINE DOWN IN WALL, WITHIN 2'-0" OF LAVATORY TO MIXING VALVE. TEMPERING MIXING VALVE SHALL BE SET @ 110°F.
- (12) 3/4" COLD WATER LINE DOWN IN WALL TO WATER FILTERS <S-287> and <S-288>. SEE KEYNOTES 13 AND 16, THIS SHEET.
- (13) 1/2" FILTERED WATER LINE FROM WATER FILTER <S-288> TO HOT HOLDING CABINETS <S-015> / <S-017> AND HOT WATER MACHINES <P-721>. SEE DRAWINGS A2.0, P5.0, AND P6.0. SEE KEYNOTES 7 and 17, THIS SHEET.
- (14) 1/2" COLD WATER LINE DOWN IN WALL TO INTERIOR HOSE BIBB. SEE KEYNOTE 27, THIS SHEET.
- (15) 1/2" COLD WATER LINE DOWN IN WALL TO EXTERIOR HOSE BIBB.
- (16) BUNDLED SYRUP LINES FROM FILTER <S-287> TO BEVERAGE DISPENSERS <S-532> AND FILTERED WATER LINES TO ICE CUBERS <S-512>. SEE DRAWINGS A2.0, A7.1, P5.0 AND P6.0.
- (17) 1/2" FILTERED WATER DOWN IN WALL TO BUNN HOT WATER MACHINES <P-721> (Qty. 2). BRANCH-OFF FOR EACH DISPENSER. STUB OUT OF WALL @ 6'-0" A.F.F. PROVIDE MANUAL CUT-OFF VALVE FOR EACH DISPENSER. SEE ELEVATION 7 / A8.2 FOR REFERENCE.
- (18) 2" WALL-MOUNTED GAS PIPE DOWN WALL TO COOKING EQUIPMENT. COORDINATE LOCATION w/ WALK-IN COOLER BOX.
- (19) 2" GAS MANIFOLD ALONG WALL TO COOKING EQUIPMENT. MOUNTING HEIGHT @ 12" A.F.F.
- (20) 1/2" FILTER WATER STUB-UP FROM BELOW SLAB TO 1" A.F.F. FOR CONNECTION TO HEATED CABINETS <S-015> (Qty. 2) and <S-017> (Qty. 2). SEE KEYNOTE 7, THIS SHEET.
- (21) 3" PVC EXHAUST AND INTAKE FLUES FROM WATER HEATERS, PIPE INTAKE THRU ROOF AND EXHAUST THRU REAR WALL AS RECOMMENDED BY MANUFACTURER. SEE SHEET M2.0 AND DETAIL 2/P6.0.
- (22) 1" GAS CONNECTION FOR FUTURE / OPTIONAL SINGLE OPEN FRYER. SEE SHEET P5.0. VERIFY WITH OWNER.
- (23) 1" GAS CONNECTION TO EACH PRESSURE FRYER. PROVIDE FLEXIBLE HOSE KIT AS INDICATED ON ARCHITECTURAL DRAWING A2.1.
- (24) EMERGENCY GAS SHUT-OFF VALVE LOCATED BELOW CEILING.
- (25) OPTIONAL COFFEE AND TEA MAKERS: VERIFY WITH OWNER IF REQUIRED. PROVIDE 1/2" FILTER WATER TO EACH IF REQUIRED.
- (26) WATER HEATER (WH-1) AND (WH-2), PIPE CONDENSATE LINE, T&P DISCHARGE AND DRAIN PAN TO FLOOR SINK. SEE WATER HEATER DETAIL 2 / P6.0.
- (27) PROVIDE 3/4" HOSE BIB CONNECTION. ROUGH-IN @ 24" A.F.F.
- (28) 1" COLD WATER LINE DOWN IN WALL TO EXTERIOR IRRIGATION VALVE BOX. COORDINATE WITH IRRIGATION TIMER (IR-01) LOCATED IN MANAGERS OFFICE. COORDINATE WITH ELECTRICAL.
- (29) 1 1/2" GAS PIPE DOWN TO WATER HEATERS.
- (30) NOTE NOT USED.
- (31) PROVIDE 3/4" COLD WATER SUPPLY STUB UP AND SHUT OFF VALVE FOR FUTURE CONNECTION TO ROOF TOP HOSE BIBB.

NOT USED E

WATER & GAS PLAN NOTES D

KEY NOTES B
 B-22-511575.000
 RCV: 9/12/2022 2:26 PM
 PLOT DATE: 03/29/2022



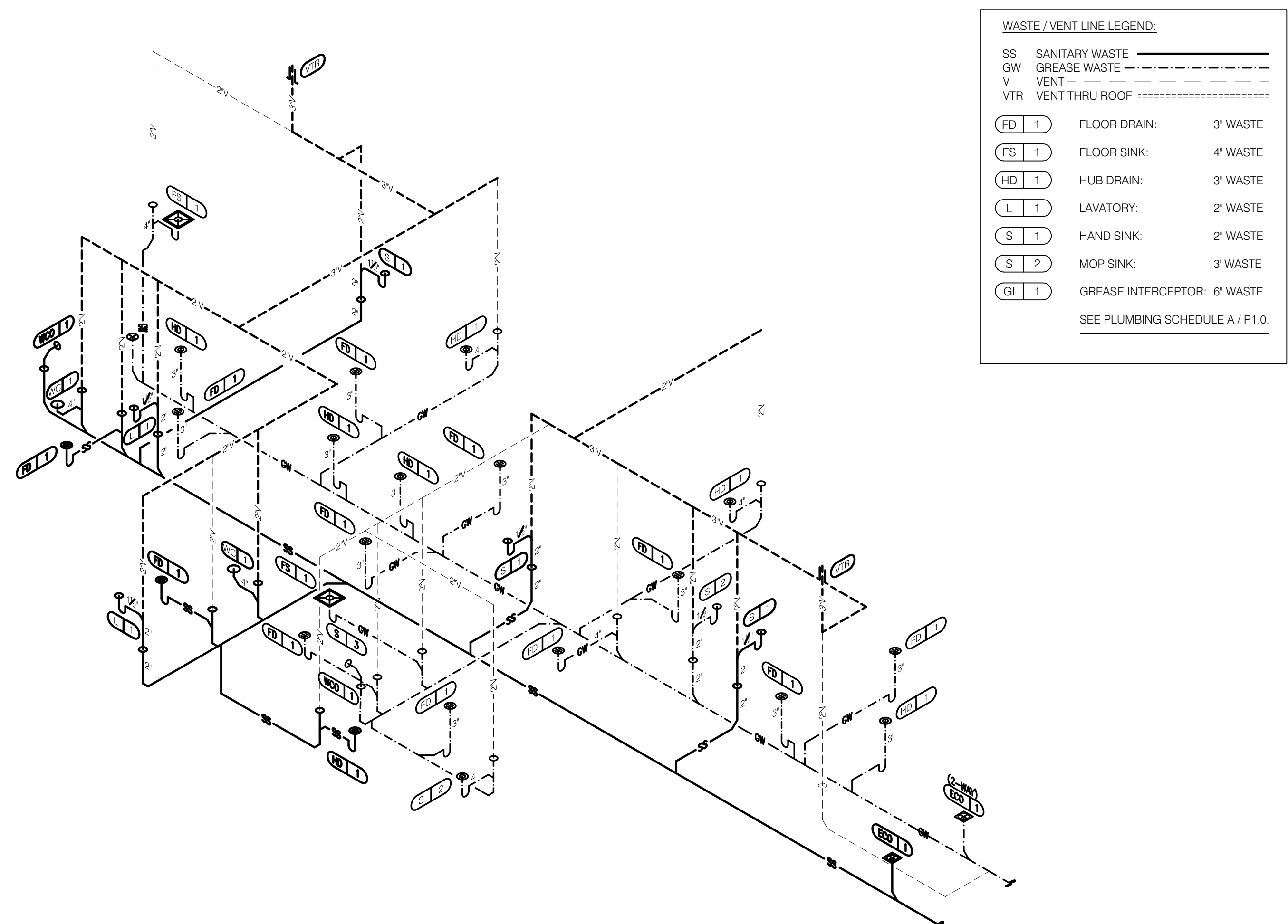
SUPPLY WATER LINE LEGEND:

CW	COLD WATER
HW	HOT WATER
TW	TEMPERED WATER

HB 1	HOSE BIBB:	3/4" CW
HB 2	HOSE BIBB:	3/4" CW
L 1	LAVATORY:	1/2" TW
S 1	HAND SINK:	1/2" TW
S 2	MOP SINK:	1/2" CW : 1/2" HW
S 3	3-COMP SINK:	1/2" CW : 1/2" HW
WC 1	WATER CLOSET:	1/2" CW
S-287	WATER FILTER:	3/4" CW
S-288	WATER FILTER:	3/4" CW

SEE PLUMBING SCHEDULE A / P1.0.

HOT / COLD / TEMPERED WATER ISOMETRIC N.T.S. **4**



WASTE / VENT LINE LEGEND:

SS	SANITARY WASTE
GW	GREASE WASTE
V	VENT
VTR	VENT THRU ROOF

FD 1	FLOOR DRAIN:	3" WASTE
FS 1	FLOOR SINK:	4" WASTE
HD 1	HUB DRAIN:	3" WASTE
L 1	LAVATORY:	2" WASTE
S 1	HAND SINK:	2" WASTE
S 2	MOP SINK:	3" WASTE
GI 1	GREASE INTERCEPTOR:	6" WASTE

SEE PLUMBING SCHEDULE A / P1.0.

WASTE / VENT ISOMETRIC N.T.S. **1**

LIS ARCHITECTURE ENGINEERING

ENGINEERING OFFICE
21450 Palm Beach Blvd.
Ave., Fla. 33920
Phone: (239) 693-9244
facsimile: (239) 693-9828

LAND INVESTMENT SERVICES, LLC
AA 26002040 CA NO: 6853 LB1057

ARCHITECTURE / ENGINEERING OFFICE
10000 S.W. 11th St.
Suite 2064, Oviedo, FL 32765
Phone: (321) 244-0402
facsimile: (321) 244-9419

THIS ITEM HAS BEEN ELECTRONICALLY SIGNED AND SEALED BY ROBERT WAYNE CASE, PE ON JUNE 24, 2022. USING A DIGITAL SIGNATURE. PRINTED COPIES OF THIS DOCUMENT ARE NOT CONSIDERED SIGNED AND SEALED AND THE SIGNATURE MUST BE VERIFIED ON ANY ELECTRONIC COPIES.

Digitally signed by ROBERT W CASE
Date: 2022.09.12 12:08:48 -04'00'

ROBERT WAYNE CASE
FLORIDA PE #44643

PLAN SET REVISIONS:

06/22/22	- BUILDING COMMENTS
09/12/22	- BUILDING COMMENTS

CONTRACT DATE: 12-18-2019
BUILDING TYPE: Kb 30-19
PLAN VERSION:
SITE NUMBER:
ENTITY NUMBER:
STORE NUMBER:
LIS PROJECT: 2019-303

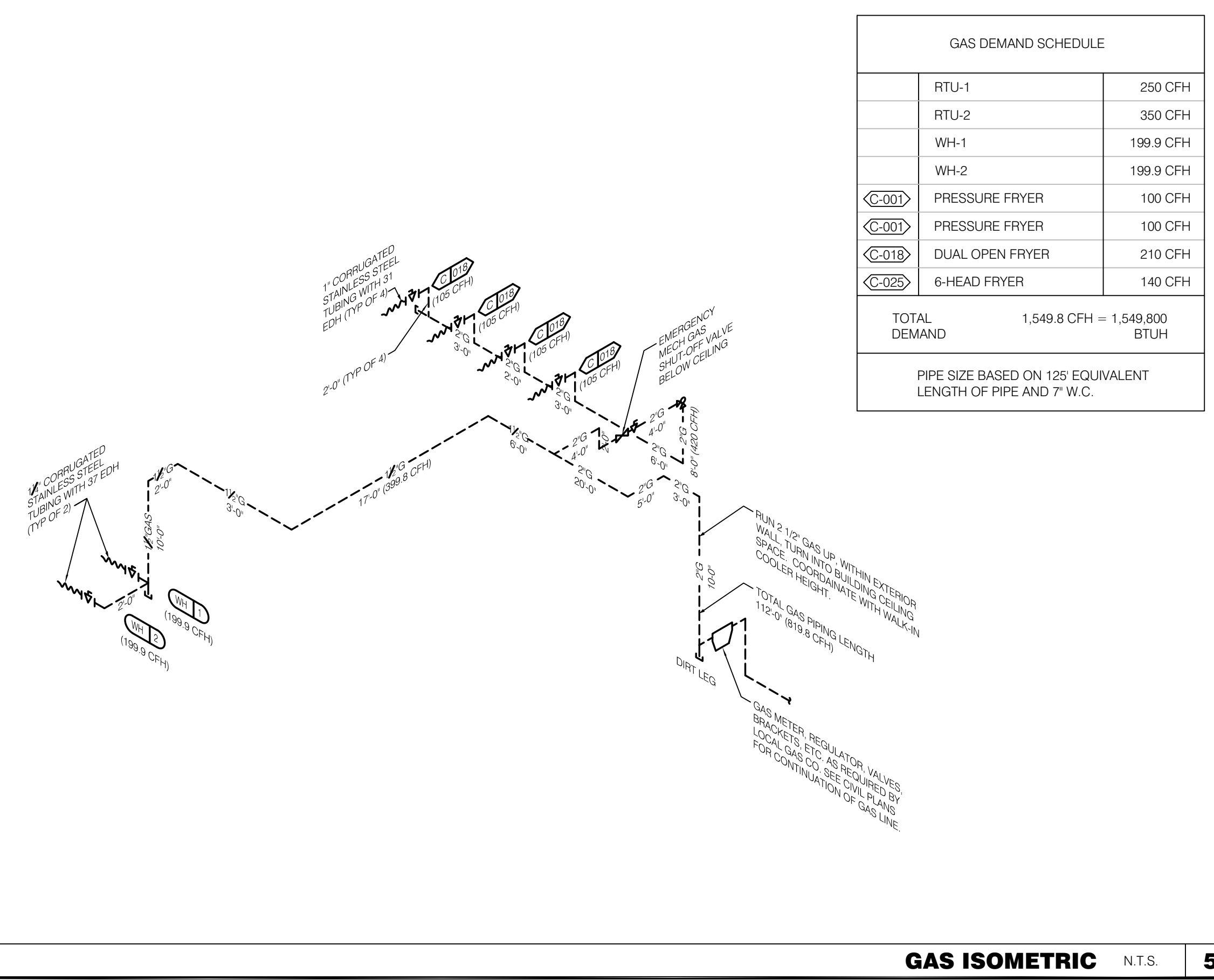
KFC
OAKLEAF CORNER OUTPARCEL 3
DUVAL COUNTY, FL



RISER DIAGRAMS

P4.0

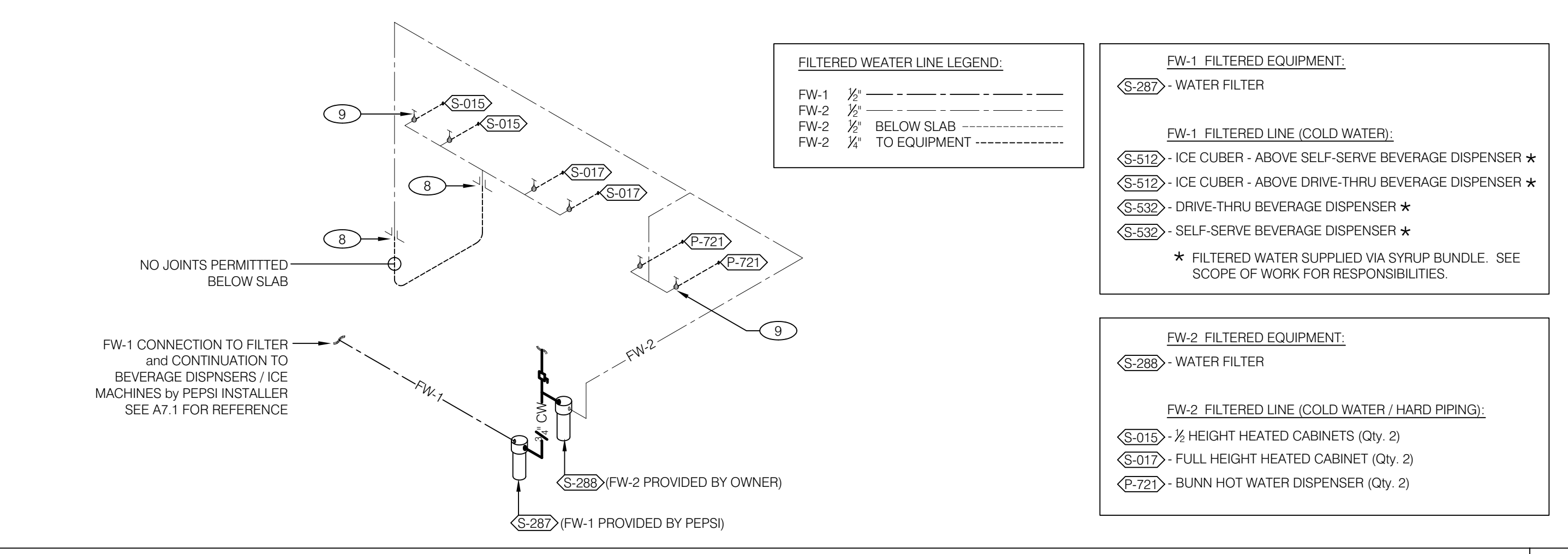
KEYNOTES
3
PLOT DATE: 03/29/2022



GAS DEMAND SCHEDULE

RTU-1	250 CFH	
RTU-2	350 CFH	
WH-1	199.9 CFH	
WH-2	199.9 CFH	
C-001	PRESSURE FRYER	100 CFH
C-001	PRESSURE FRYER	100 CFH
C-018	DUAL OPEN FRYER	210 CFH
C-025	6-HEAD FRYER	140 CFH
TOTAL DEMAND		1,549.8 CFH = 1,549,800 BTUH

PIPE SIZE BASED ON 125' EQUIVALENT LENGTH OF PIPE AND 7" W.C.



FILTERED WATER LINE LEGEND:

FW-1	3/4" BELOW SLAB
FW-2	3/4" TO EQUIPMENT

FW-1 FILTERED EQUIPMENT:

S-287	WATER FILTER
-------	--------------

FW-1 FILTERED LINE (COLD WATER):

S-512	ICE CUBER - ABOVE SELF-SERVE BEVERAGE DISPENSER *
S-512	ICE CUBER - ABOVE DRIVE-THRU BEVERAGE DISPENSER *
S-532	DRIVE-THRU BEVERAGE DISPENSER *
S-532	SELF-SERVE BEVERAGE DISPENSER *

* FILTERED WATER SUPPLIED VIA SYRUP BUNDLE. SEE SCOPE OF WORK FOR RESPONSIBILITIES.

FW-2 FILTERED EQUIPMENT:

S-288	WATER FILTER
-------	--------------

FW-2 FILTERED LINE (COLD WATER / HARD PIPING):

S-015	1/2" HEIGHT HEATED CABINETS (Qty. 2)
S-017	FULL HEIGHT HEATED CABINET (Qty. 2)
P-721	BUNN HOT WATER DISPENSER (Qty. 2)

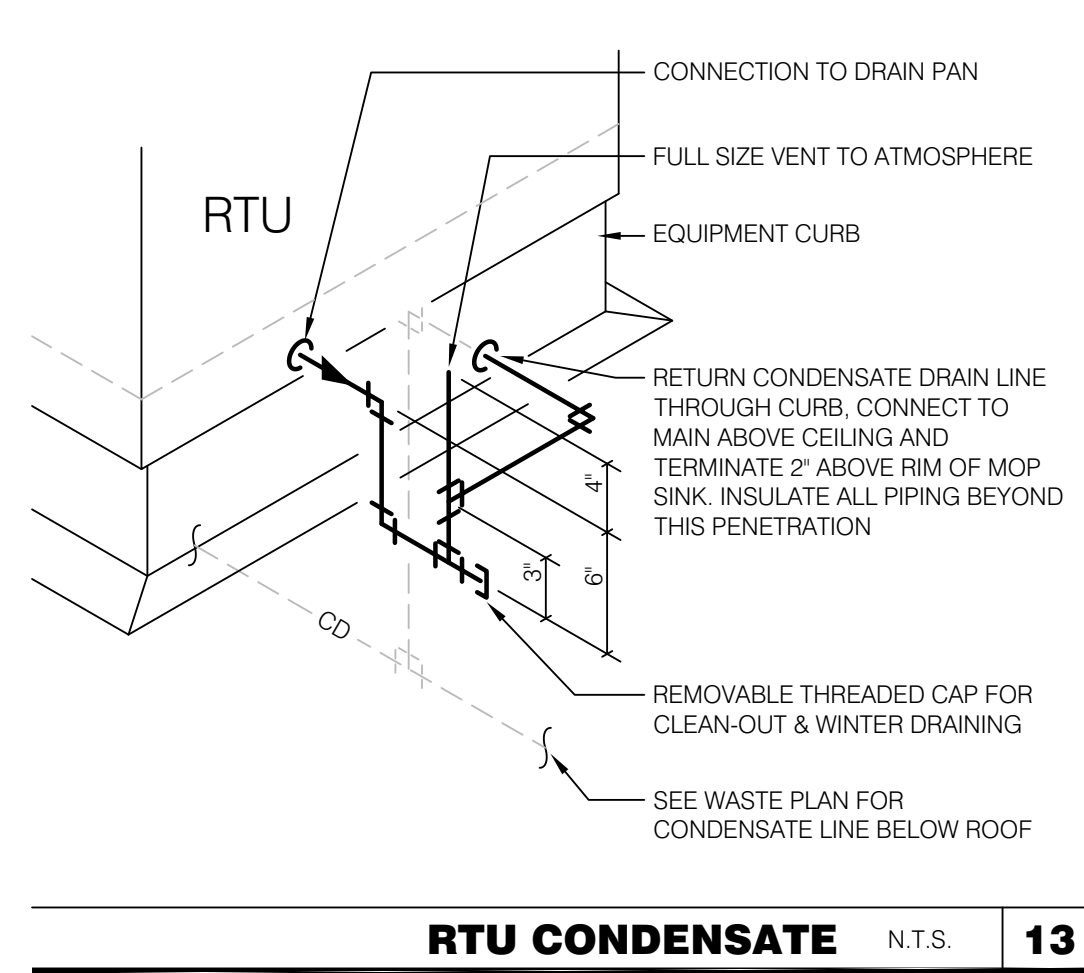
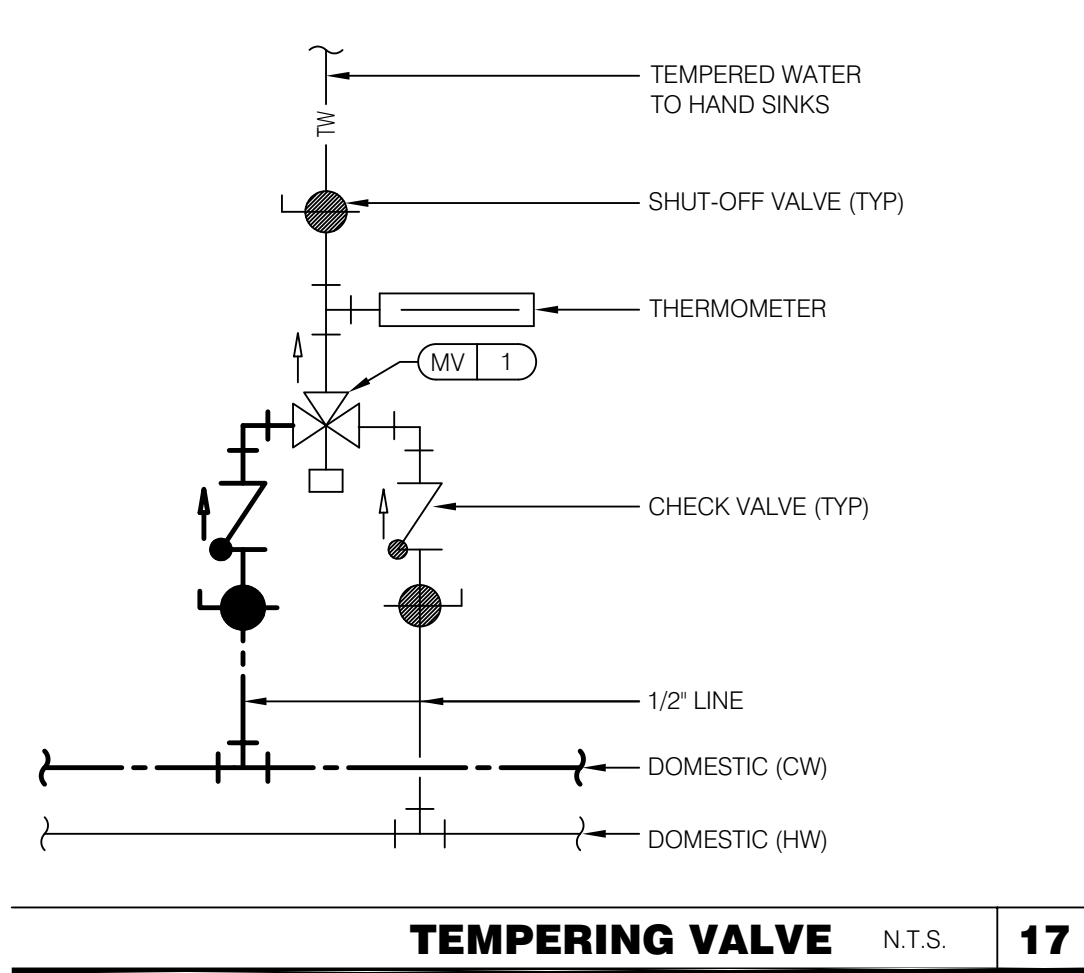
FILTERED WATER ISOMETRIC N.T.S. **2**

- | | | | |
|---|--|----|--|
| 1 | ENTIRE RUN OF DRAIN LINES ON INLET TO GREASE TRAP SHALL BE SCHEDULE 40 PVC OR AS REQUIRED BY CODE. | 9 | 1/2" FILTERED WATER; TERMINATE WITH BALL VALVE / TRANSITION TO 1/2" LINE FOR CONNECTION TO EQUIPMENT. |
| 2 | 1/2" TEMPERED WATER DOWN IN WALL TO HAND SINK / LAVATORY. | 10 | GAS SHUT-OFF VALVE IN CEILING SPACE BY G.C. |
| 3 | 1/2" HOT AND COLD WATER LINES DOWN IN WALL TO PREP SINK. | 11 | PIPE T&P RELIEF VALVE TO OUTSIDE OF BUILDING OR TO HUB DRAIN. RUN FULL SIZE PIPE FROM VALVE WITH TYPE 'K' COPPER TUBING. |
| 4 | THERMOSTATIC MIXING VALVE. | 12 | PROVIDE TRAP PRIMERS AS REQUIRED PER CODE. |
| 5 | REDUCED PRESSURE BACKFLOW PREVENTER PER LOCAL UTILITY REQUIREMENTS. PROVIDE SHUT-OFF VALVES AT BOTH SIDES OF BACKFLOW PREVENTER. VERIFY LOCATIONS WITH CIVIL DRAWINGS. | 13 | IRRIGATION VALVE BOX. COORDINATE WITH ENLARGED PLAN 3 / E3.1 and COMMUNICATIONS PLAN E5.0. |
| 6 | EMERGENCY GAS SHUT-OFF VALVE SHALL BE A MECHANICALLY OPERATED VALVE ACTIVATED BY THE EXHAUST HOOD FIRE SUPPRESSION SYSTEM IN ACCORDANCE WITH IBC AND NFPA. LOCATE SHUT-OFF BELOW FINISH CEILING. | 14 | DIRT LEG. |
| 7 | FACTORY GAS PIPING AT ROOF TOP UNIT FOR THROUGH THE BASE PIPE CONNECTION. SHUT-OFF VALVE SHALL BE LOCATED OUTSIDE OF THE UNIT. | 15 | 2" GAS MANIFOLD, WALL MOUNTED 12" A.F.F. |
| 8 | 1/2" FILTERED WATER, CONTINUE BELOW SLAB, ROUTE UP THROUGH FLOOR CAP PIPE 1" A.F.F. FOR CONNECTION TO HEATED CABINETS <S-015> / <S-017>. | 16 | PROVIDE 1" GAS LINE, CAPPED-OFF (FOR FUTURE TIE-IN). |
| | | 17 | PROVIDE 1" GAS LINE FOR FUTURE / OPTIONAL SINGLE OPEN FRYER <C-017>; VERIFY WITH OWNER. |

GAS ISOMETRIC N.T.S. **5**

KEYNOTES
3
PLOT DATE: 03/29/2022

B-22-511575.000
RCV: 9/12/2022 2:26 PM

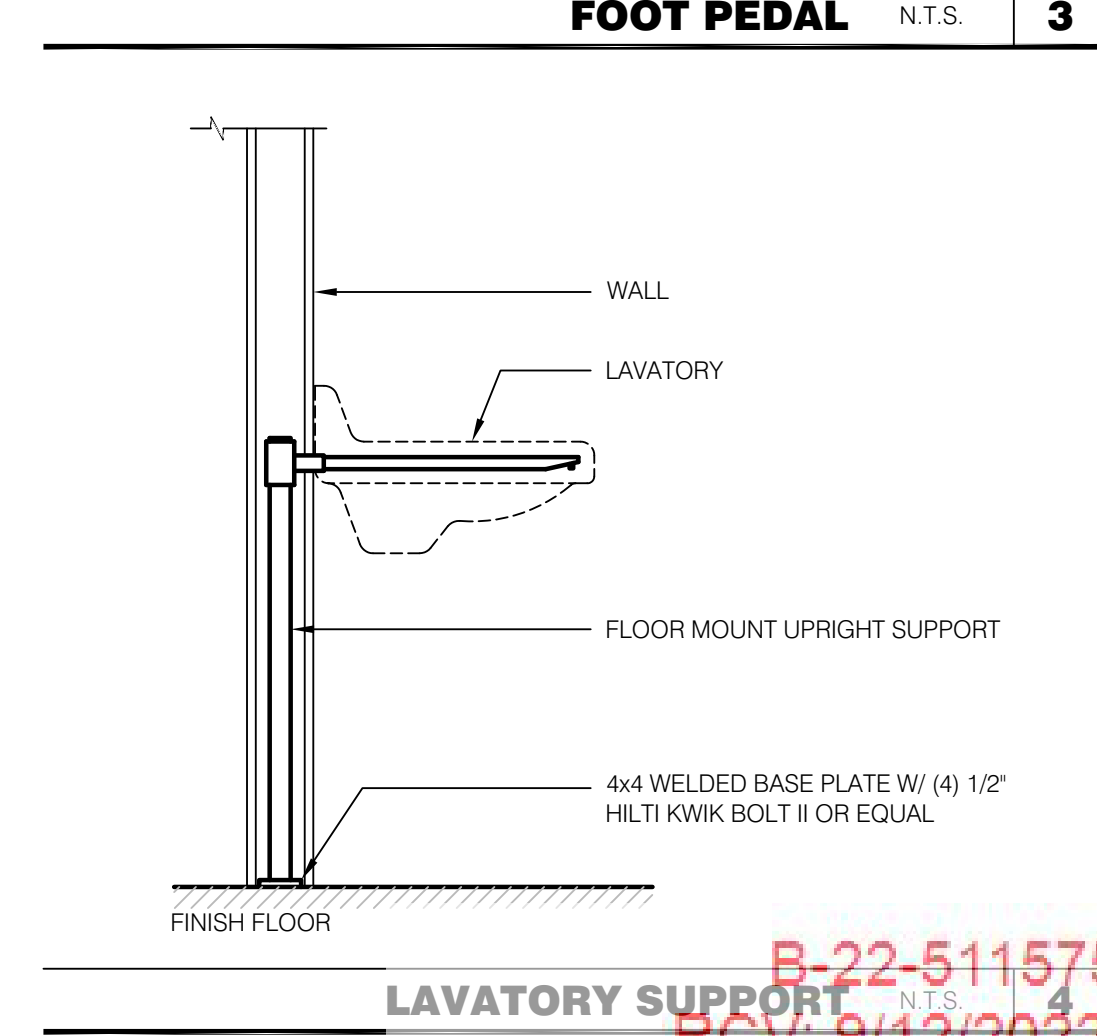
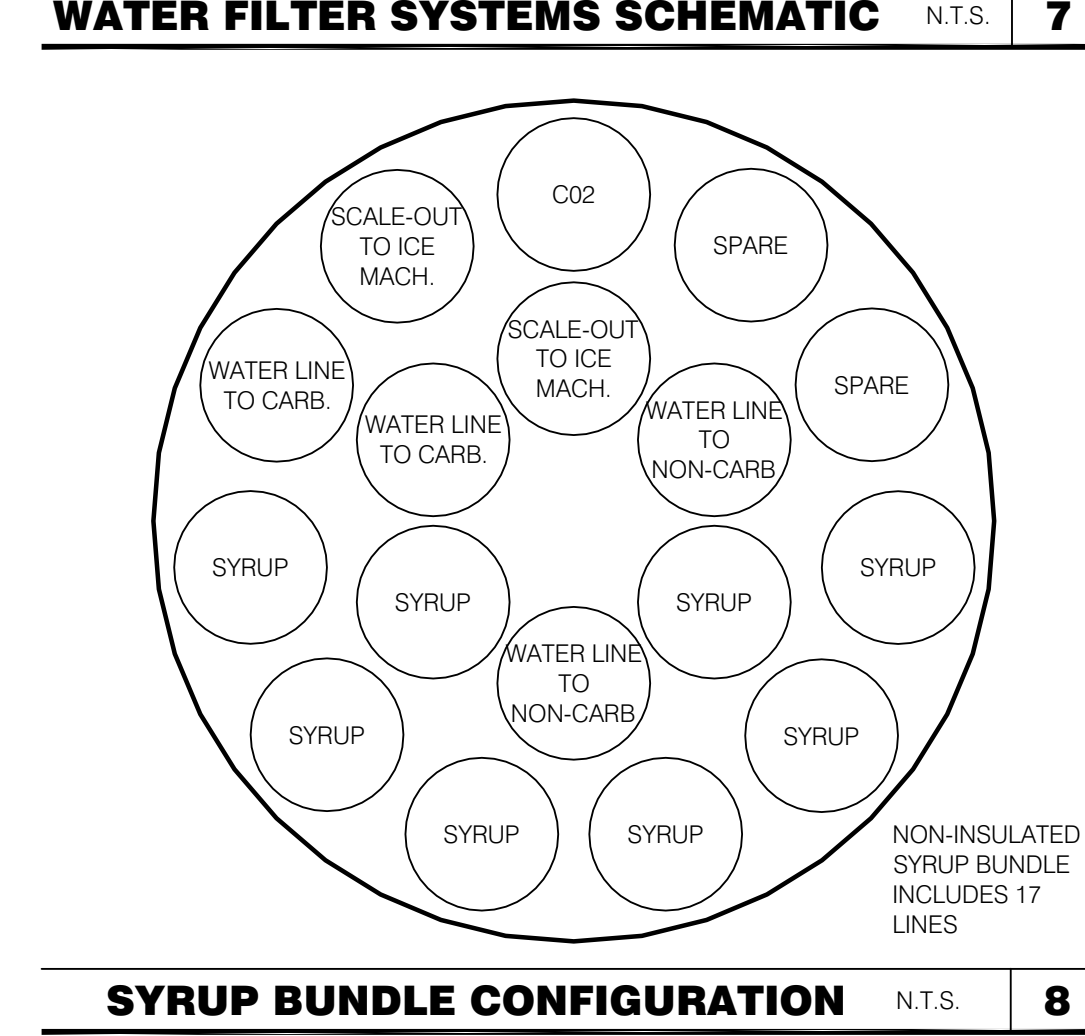
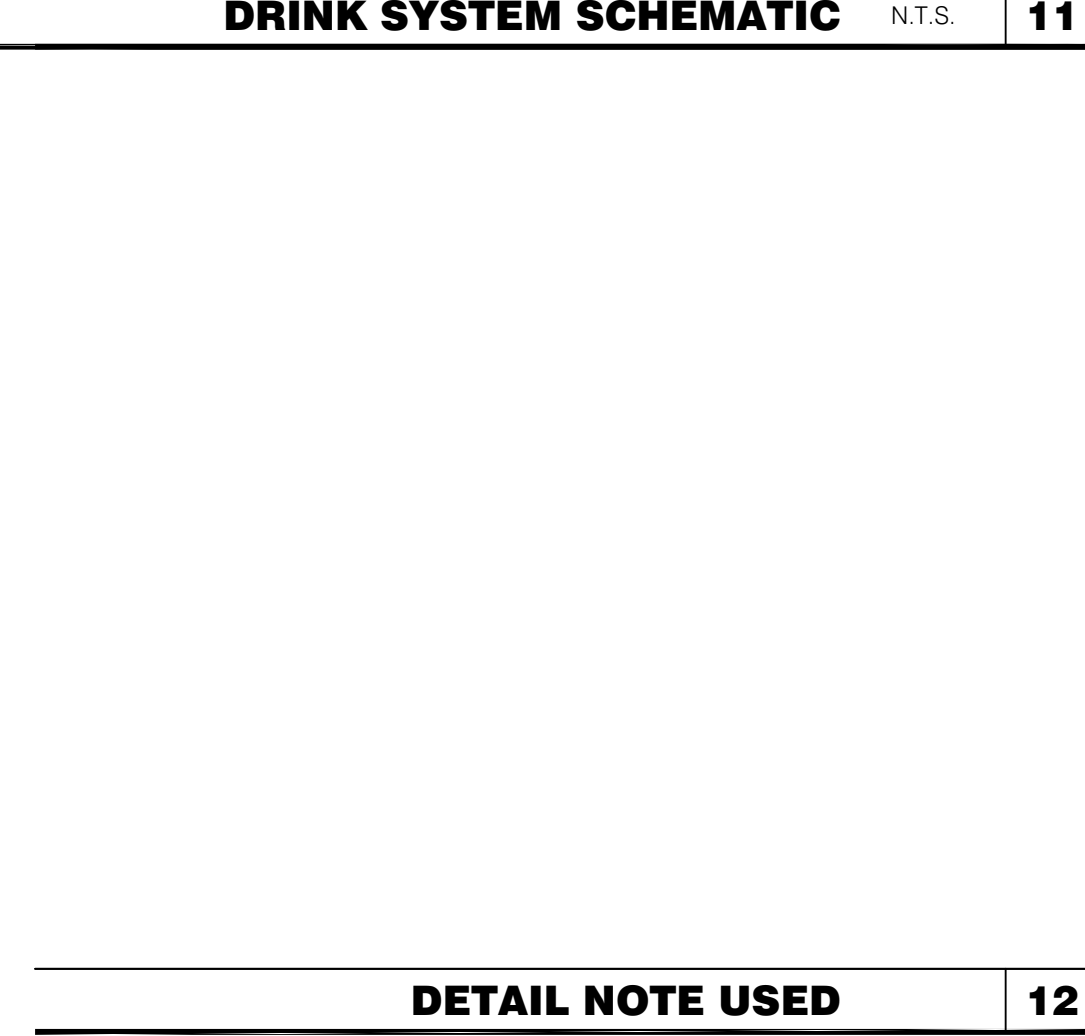
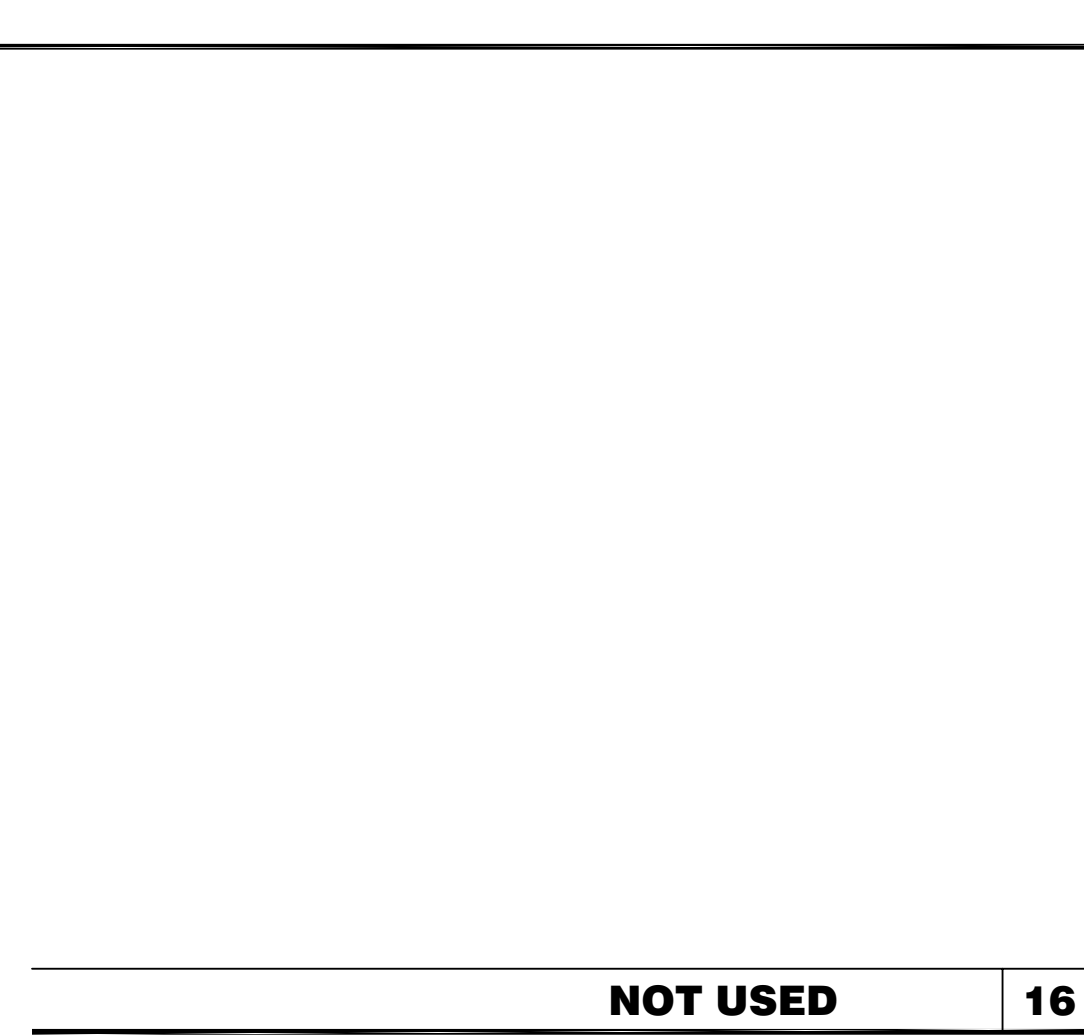
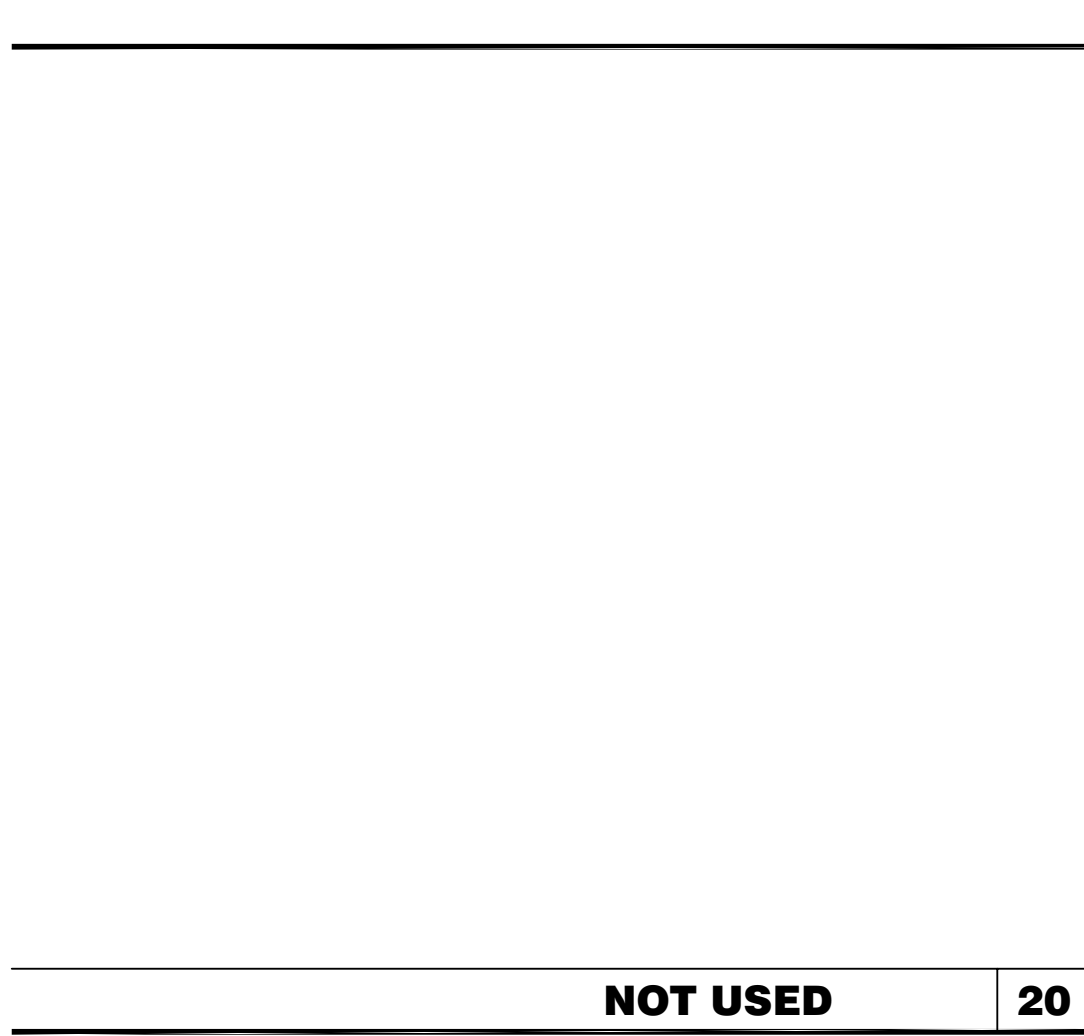
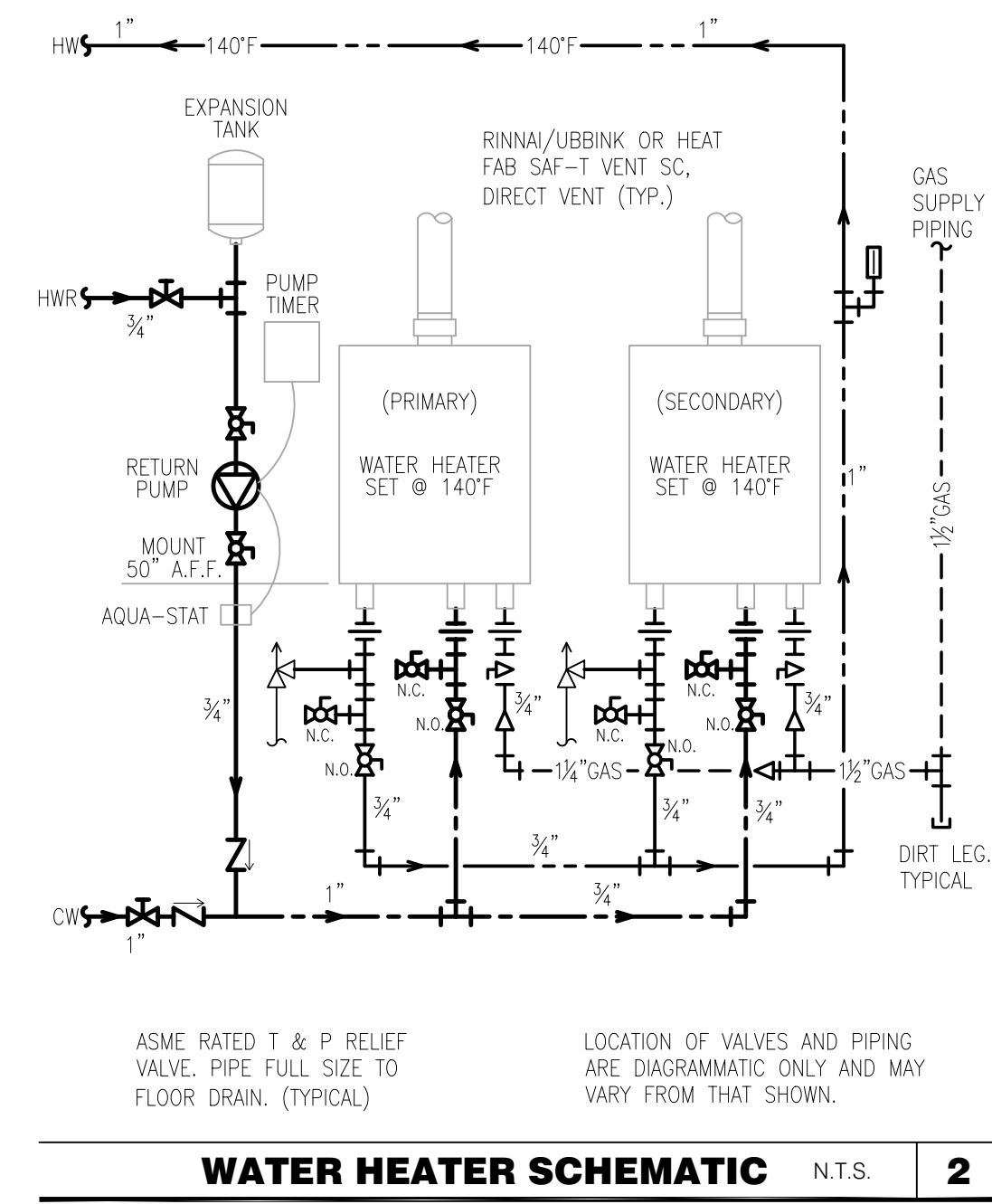
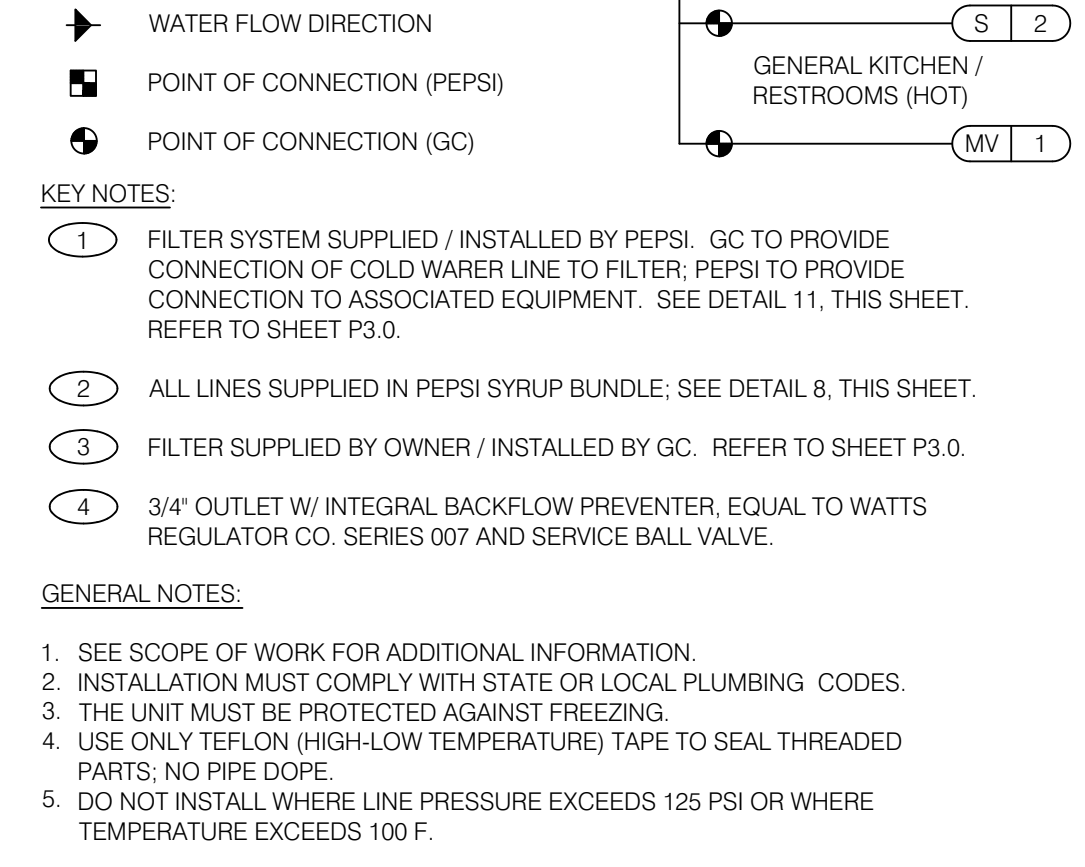
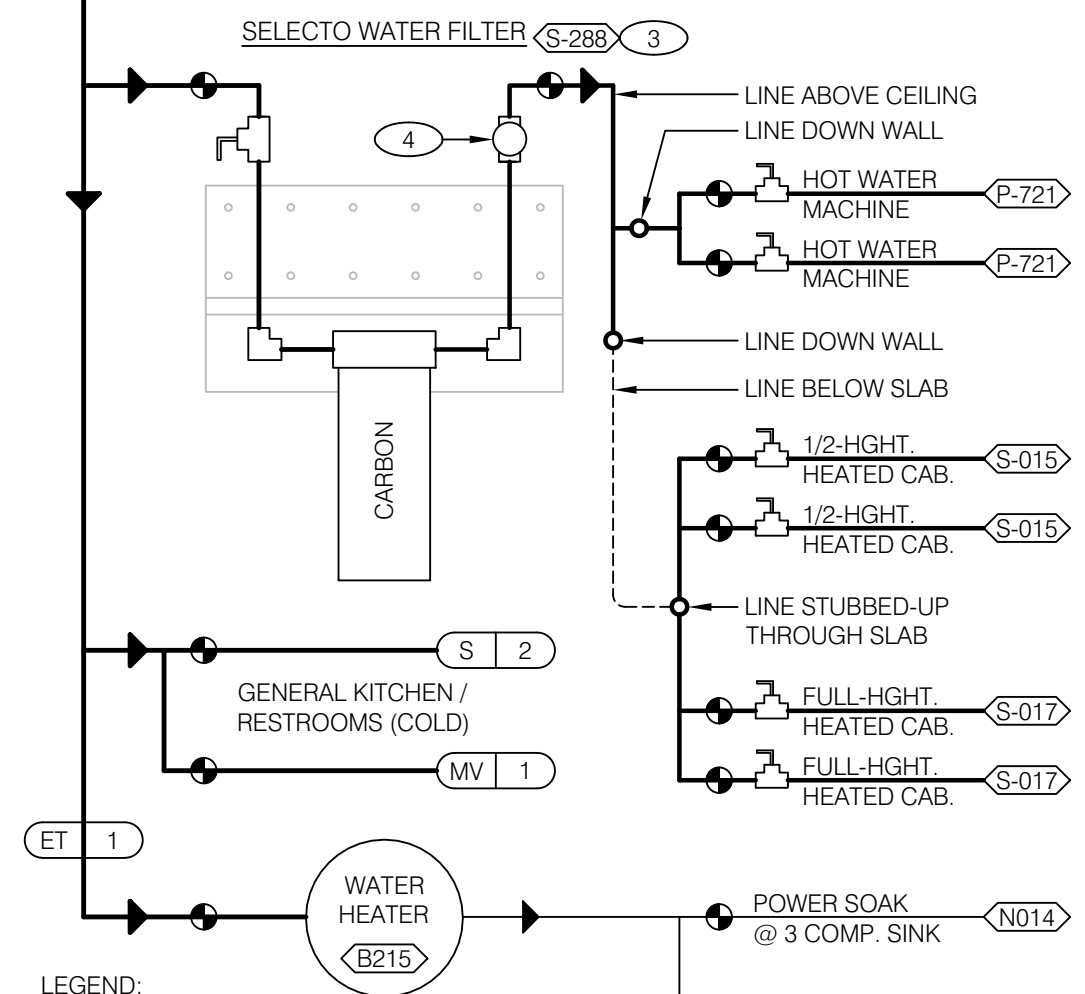
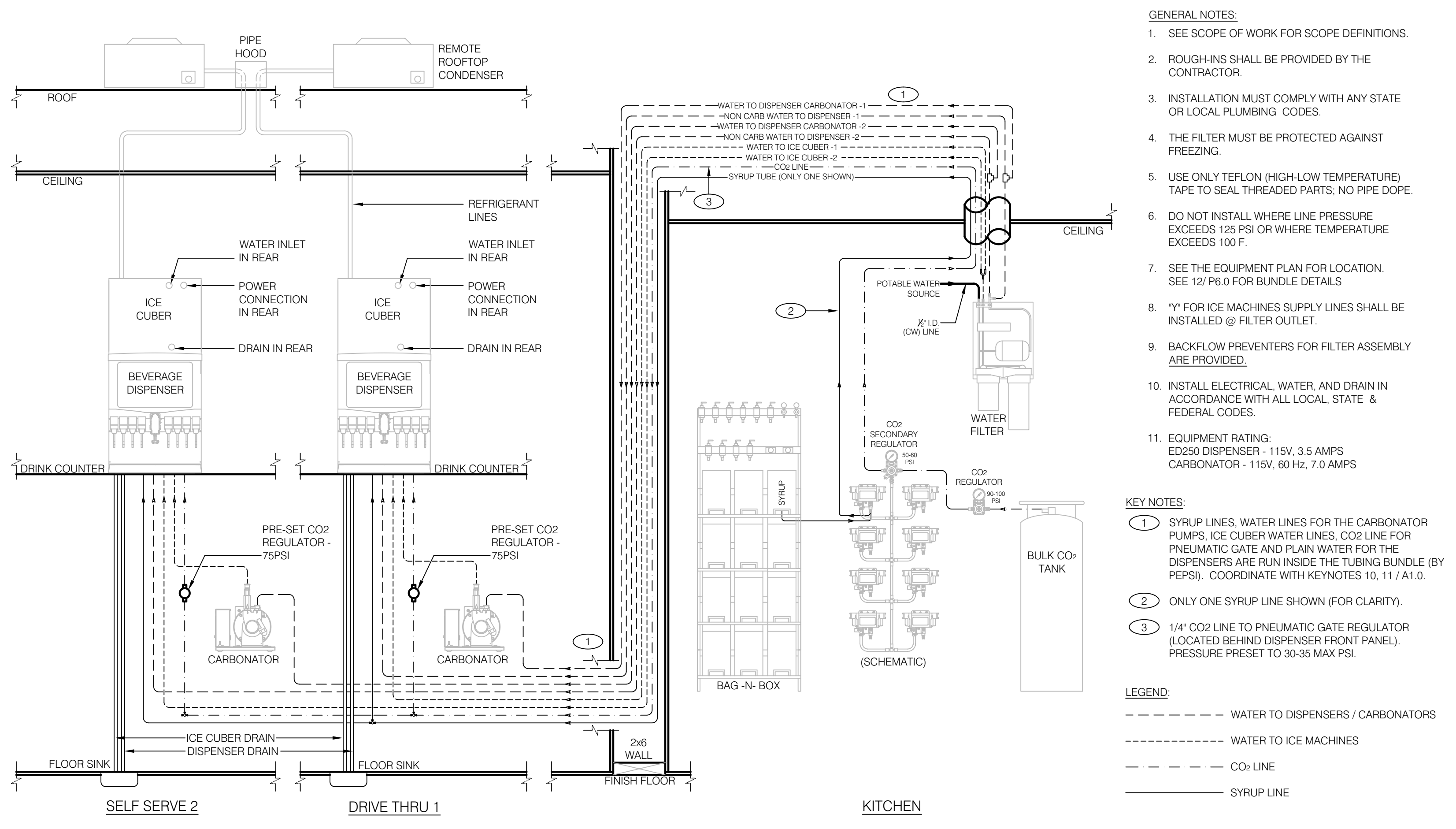
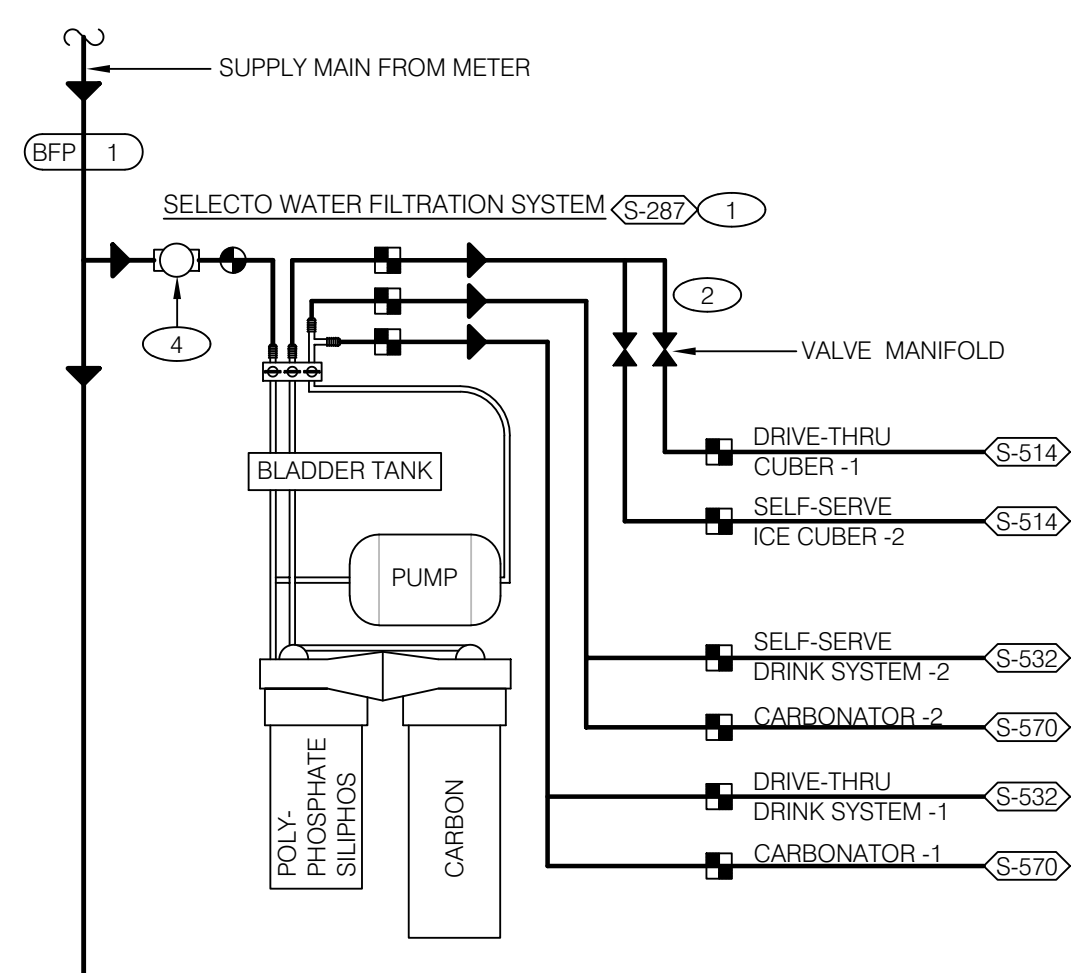


QTY	MODEL #	DESCRIPTION
1	EF100T199E3N	BWC HIGH EFFICIENCY COMMERCIAL WATER HEATER
1	MFK7	MANIFOLD KIT *
1	DET12	EXPANSION TANK
1	HAL	ALARM LIGHT W/ INSTALLATION INSTRUCTIONS
1	PK100	STAND

THE FOLLOWING IS INCLUDED IN THE MANIFOLD KIT:

QTY	DESCRIPTION	QTY	DESCRIPTION
1	3/4" BLK GAS COCK	1	1 1/2" CHECK VALVES CXC
1	3/4" BLK UNION	1	1 1/2" GALV ST 90
1	3/4" BLK TEE	1	1 1/2" CX ST 90
1	3/4" BLK CAP	1	HPT-507 1/2" P-TRAP
3	3/4" x 2 1/2" BLK NIPPLE	1	1/2" P4 SMA
1	3/4" x 4 BLK NIPPLE	1	1 1/2" x 1 1/2" x 1/2" TEE COPPER
1	3/4" THD BALL VALVE	1	DIAL THERMOMETER
2	1 1/2" FX UNION	1	1/2" COPPER FEMALE FITTING ADAPTER
6	1 1/2" CXC 90	1	3" PVC 90°
1	1 1/2" CXC TEE	1	1/2" PVC STREET 90°
2	1 1/2" BALL VALVES CXC	1	1/2" PVC 90° ELBOW

WATER HEATER SCHEDULE N.T.S. **9**



ARCHITECTURE ENGINEERING
LIS
LAND INVESTMENT SERVICES, LLC
AA 26002040 CA NO: 6853 LB 1057
ARCHITECTURE / ENGINEERING OFFICE
21450 Palm Beach Blvd.
Ave., Fla. 33920
Suite 206A, Oviedo, FL 32765
Phone: (321) 244-0402
facsimile: (321) 244-9419

THIS ITEM HAS BEEN ELECTRONICALLY SIGNED AND SEALED BY ROBERT WAYNE CASE, PE ON JUNE 24, 2022. USING A DIGITAL SIGNATURE. PRINTED COPIES OF THIS DOCUMENT ARE NOT CONSIDERED SIGNED AND SEALED AND THE SIGNATURE MUST BE VERIFIED ON ANY ELECTRONIC COPIES.

Digitally signed by ROBERT W CASE
Date: 2022.09.12 12:09:12 -04'00'

ROBERT WAYNE CASE
FLORIDA PE #44643

PLAN SET REVISIONS:
06/22/22 - BUILDING COMMENTS
09/12/22 - BUILDING COMMENTS

CONTRACT DATE: 12-18-2019
BUILDING TYPE: Kb 30-19
PLAN VERSION:
SITE NUMBER:
ENTITY NUMBER:
STORE NUMBER:
LIS PROJECT: 2019-303

KFC
OAKLEAF CORNER OUTPARCEL 3
DUVAL COUNTY, FL

PLUMBING DETAILS
P5.0

B-22-511575.000
RCV: 9/12/2022 2:26 PM

03/29/2022