

GENERAL:

- LOCATE, CUT AND FRAME ROOF OPENINGS AS SHOWN FOR ALL HVAC EQUIPMENT AND EXHAUST FANS.
- IT IS VERY IMPORTANT THAT ACCURATE MEASUREMENTS ARE USED WHEN LOCATING EXHAUST FAN ROOF OPENINGS TO ENSURE THAT NO ADDITIONAL OFFSETS ARE REQUIRED IN THE EXHAUST DUCTWORK. COORDINATE ROOF OPENINGS WITH THE KITCHEN EQUIPMENT.
- PROVIDE ANY FRAMING REQUIRED FOR DIFFUSER INSTALLATION IN HARD CEILING.

HVAC:

- INSTALLATION SHALL CONFORM TO THE ENERGY CONSERVATION DESIGN MANUAL STANDARDS FOR NEW NONRESIDENTIAL BUILDINGS, IF REQUIRED.
- ALL WORK AND MATERIALS SHALL COMPLY WITH GOVERNING CODES, SAFETY ORDERS AND REGULATIONS.
- OBTAIN AND PAY FOR ALL NECESSARY PERMITS, FEES AND INSPECTIONS REQUIRED BY GOVERNING AUTHORITIES.
- COORDINATE WITH ELECTRICAL CONTRACTOR TO PROVIDE CONDUIT FOR LINE AND LOW VOLTAGE WIRING, LINE VOLTAGE WIRING SWITCHES, AND FINAL CONNECTIONS.
- ANY EQUIPMENT THAT IS SUBSTITUTED SHALL FIT IN THE SPACE PROVIDED WITH ADEQUATE ROOM FOR SERVICING, INCLUDING SUBSTITUTE EQUIPMENT NAMED IN THE SPECIFICATIONS. SUBMIT A 1/4" SCALE DRAWING OF ALL EQUIPMENT SUBSTITUTED FOR APPROVAL PRIOR TO INSTALLATION, INCLUDING, BUT NOT LIMITED TO, STRUCTURAL AND ARCHITECTURAL IMPACT, CLEARANCE REQUIREMENTS AND UTILITY REQUIREMENTS.
- FOR INSTALLATION OF RECHARGEABLE REFRIGERANT LINES FROM ICE MACHINE TO CONDENSER ON ROOF, SEE SCOPE OF WORK.
- HVAC UNITS SHALL BE MOUNTED LEVEL ON ROOF CURBS.
- ALL DUCTWORK SHALL BE EXTERNALLY INSULATED.
- ALL SUPPLY / RETURN DUCTS SHALL BE RIGID, WITH THE EXCEPTION OF THE LAST 10'-0" WHICH MAY BE FLEX.
- SMOKE DETECTOR SHALL BE INSTALLED IN THE SUPPLY AIR DUCT AND SHALL DEACTIVATE ROOFTOP UNIT UPON SENSING SMOKE. SMOKE DETECTOR SHALL BE INSTALLED, PRIOR TO ANY OUTSIDE AIR CONNECTIONS.
- ALL HOOD EXHAUST DUCTS SHALL BE RIGID 16 GA MINIMUM, WELDED DUCT. GRIND ALL WELDS SMOOTH, PROVIDE FIRE MASTER DUCT WRAP FOR ALL HOOD EXHAUST DUCTS. SEE 15/M4.0.
- ALL BRANCH DUCTS FEEDING INDIVIDUAL DIFFUSERS SHALL HAVE DAMPERS AT TAKEOFFS FOR AIR BALANCING. PROVIDE ACCESS PANELS TO DAMPERS. SEE 8 / M4.0.
- ALL UTILITY PIPING FOR RTU's SHALL RUN UP THROUGH ROOF INSIDE EACH UNIT'S ROOF CURB.
- ALL OUTSIDE AIR INTAKES SHALL BE A MINIMUM OF 10'-0" FROM EXHAUST FANS AND / OR VENTS.
- SEE 8 / M1.0 AND SCOPE OF WORK FOR DESCRIPTION OF HVAC PACKAGE TO BE PURCHASED THROUGH YUM! BRANDS NATIONAL CONTRACT.
- FINAL HVAC SYSTEM TESTING AND BALANCING SHALL BE PERFORMED BY INDEPENDENT AGENT CONTRACTED DIRECTLY BY THE OWNER. A RE-TEST IS MANDATORY FOR A FALSE START (I.E. NO POWER UPON AGENT'S ARRIVAL, EQUIPMENT NOT WIRED, ETC.) AND SHALL BE A COST INCURRED BY THE G.C. IN THE EVENT A SYSTEM / STORE RECEIVES A GRADE OF 5 OR BELOW AS A RESULT OF THE HVAC SYSTEM PERFORMANCE OR OPERATIONAL DEFICIENCIES, OWNER WILL REQUEST A RE-TEST AND THE COST FOR SAME SHALL BE ALSO INCURRED BY THE GENERAL CONTRACTOR.
- THERMOSTATS; SEE SCOPE OF WORK.
- REMOTE THERMOSTAT SENSORS; SEE SCOPE OF WORK.
- SUPPLY AIR TEMPERING (SAT) CONTROL; SEE SCOPE OF WORK. SAT FUNCTION: IF ROOM TEMPERATURE IS AT ESTABLISHED 'SET-POINT', AND THE SUPPLY DUCT TEMPERATURE IS 10 DEGREES BELOW SET-POINT, SAT CONTROLS INITIATE FIRST STAGE HEATING TO PREVENT COLD AIR DRAFTS FROM ENTERING THE CONDITIONED SPACE.

GENERAL NOTES 10

SYMBOL & ABBREV.	DESCRIPTION
	SA/SUP SUPPLY AIR (RISE/DROP)
	RA/RET RETURN AIR DUCT (RISE/DROP)
	EA/EXH EXHAUST AIR DUCT (RISE/DROP)
	CD/SR CEILING DIFFUSER/SUPPLY REGISTER (ARROWHEAD REPRESENTS NUMBER OF THROW)
	RR/RG RETURN REGISTER/GRILLE
	ER/EG EXHAUST REGISTER/GRILLE
	RECTANGULAR DUCT ELBOW WITH TURNING VANES
	MVD FLEXIBLE CONNECTION
	FD MANUAL VOLUME DAMPER
	L FIRE DAMPER
	(L) DUCT LINING (1" THICK UNLESS OTHERWISE NOTED)
	S SINGLE LINE DUCT BRANCH TAKEOFF
	T DUCT TRANSITION (RECTANGULAR TO ROUND)
	FLEX FLEXIBLE DUCT (14'-0 MAXIMUM)
	T T-STAT THERMOSTAT; SEE GENERAL NOTE 17, THIS SHEET
	TS THERMOSTAT SENSOR (REMOTE); SEE GENERAL NOTE 18, THIS SHEET
	CD CONDENSATE DRAIN
	DIA DIAMETER
	DL DOOR LOUVER
	UC DOOR UNDERCUT
	X-X 10000 MECHANICAL EQUIPMENT DESIGNATION
	A/C, AC AIR CONDITIONING
	BDD BACK DRAFT DAMPER
	SD SMOKE DETECTOR; SEE GENERAL NOTE 10, THIS SHEET.

MECHANICAL SYMBOLS 12

SYMBOL & ABBREV.	DESCRIPTION
CB	CIRCUIT BREAKER
CLG.	CEILING
CONN.	CONNECT/CONNECTION
CONT.	CONTINUATION
CONTR.	CONTRACTOR
CFM	CUBIC FEET PER MINUTE
DET.	DETAIL
DISC.	DISCONNECT
DTR	DOWN THRU ROOF
EF	EXHAUST FAN
(E)	EXISTING
GA.	GAGE/GAUGE
GC	GENERAL CONTRACTOR
HVAC	HEATING, VENTILATING, AND AIR CONDITIONING
MFR.	MANUFACTURER
MECH.	MECHANICAL
(N)	NEW
OA/OSA	OUTSIDE AIR
OBD	OPPOSED BLADE DAMPER
S/S	STAINLESS STEEL
TYP.	TYPICAL
UON	UNLESS OTHERWISE NOTED
UTR	UP THRU ROOF

MARK	AREA SERVED	FAN DATA					COOLING CAPACITY			HEAT CAPACITY		UNIT ELECT DATA			MAX UNIT WEIGHT (LBS)	MANUFACTURER AND MODEL NUMBER	REMARKS
		SUPPLY CFM	MIN O.A. CFM	ESP	HP	RPM	NOM TONS	MIN CAP (MBH) TOT/SEN	MIN EER	ELEC (kw)	PHASE (STAGES)	VOLTS/ PH	MCA	MOCPP			
RTU-1	DINING	3400	600	0.8	2.0	811	8.5	107.2/84.2	11.2	13.5	1	208/3	56	60	937	TRANE TSC102	SEE NOTES 1-6
RTU-2	KITCHEN	5000	600	0.8	3.0	772	12.5	139.1/111.5	11.0	13.5	1	208/3	67	80	1375	TRANE TSC150	SEE NOTES 1-6

NOTES:

- LISTED CAPACITY IS GROSS COOLING CAPACITY AT 80°F DB/67°F WB EAT AND 95°F AMBIENT. OUTDOOR DESIGN CONDITION, SUMMER: 95°F DB & 74°F WB, WINTER: 17°F. ADJUST SELECTION BASED ON ACTUAL SITE CONDITIONS AND ACTUAL MOTOR HEAT. REFRIGERANT SHALL BE 410A.
- SPECIFIED RTU'S ARE DOWN DISCHARGE PACKAGED ELEC/ELEC ROOFTOP UNITS WITH MINIMUM 2-STAGE COOLING. INCLUDES THROUGH THE ROOF CURB POWER & CONDENSATE DRAIN.
- SPECIFIED UNIT INCLUDES HINGED ACCESS DOORS, 2" PLEATED FILTERS, 100% ECONOMIZER WITH BAROMETRIC RELIEF, CIRCUIT BREAKER WITH SINGLE POINT WIRING, HAIL GUARD, AND FACTORY FABRICATED, KNOCK-DOWN ROOF CURB.
- SPECIFIED UNIT INCLUDES A UN-POWERED CONVENIENCE OUTLET AND SMOKE DUCT DETECTOR IN THE SUPPLY DUCT OF UNIT.
- SPECIFIED UNIT INCLUDES FACTORY INSTALLED HOT GAS REHEAT OPTION.
- SUPPLY AIR TEMPERING (SEE GENERAL NOTE 19, THIS SHEET): WINTER DESIGN DB TEMP. 47 DEG. F OR LESS HOT GAS REHEAT. RTU-1 (DINING) SUMMER DESIGN WB TEMP. 74 DEG. F (OR GREATER). RTU-2 (KITCHEN) SUMMER DESIGN WB TEMP. 75 DEG. F (OR GREATER).

TRANE PACKAGE: FOR COMPLETE INFORMATION AND PRICING ON THE TRANE HVAC PACKAGE CONTACT MARTY CUSICK, THE YUM! BRANDS ACCOUNT EXECUTIVE AT TRANE NATIONAL ACCOUNTS. TOLL-FREE PHONE: (866) YUM-HVAC or (866) 986-4822. FAX: (502) 499-7870. EMAIL: mcusick@trane.com

TRANE HAS AGREED TO SUPPLY AN HVAC PACKAGE CONSISTING OF THE ROOF-TOP UNITS, AND CURBS. RTU'S AS SPECIFIED INCLUDE AN UNPOWERED CONVENIENCE OUTLET (SEE ELECTRICAL) AND AN HACR CIRCUIT BREAKER WHICH PROVIDES UNIT DISCONNECT. TRANE ALSO HAS AVAILABLE OPTION PACKAGES WHICH INCLUDE SMOKE DETECTORS AND ENUNCIATORS, ECONOMIZERS, AND RTU VARIATIONS SUCH AS HIGH-EFFICIENCY MODELS.

BE PREPARED AT TIME OF ORDER OR QUOTE REQUEST TO PROVIDE ALL PROJECT DETAILS REGARDING SPECIFICATIONS AND QUANTITIES AS SITE SPECIFIC DESIGN MAY NOT MATCH NATIONAL DESIGN. SEE THE SCOPE OF WORK SHEETS FOR ADDITIONAL INFORMATION.

HVAC UNIT SCHEDULE 1

MARK	CFM	SP	RPM	HP	ELECT	STARTER	ACCESSORIES					MANUFACTURER AND MODEL NUMBER	REMARKS
							DISC	BDD	BIRD SCREEN	V-BELT	D-DP		
EF-1	1700	1.3	1414	.75	115/1	-	X		X	X		SVDU85HFA	SEE NOTES 1,2,3,4,5,6 & 9
EF-2	1700	1.3	1414	.75	115/1	-	X		X	X		SVDU85HFA	SEE NOTES 1,2,3,4,5,6 & 9
EF-3	100	0.5	1075	135W	120/1	-	X	X			X	COOK GC-148	SEE NOTES 7,8
EF-4	100	0.5	1075	135W	120/1	-	X	X			X	COOK GC-148	SEE NOTES 7,8
MAU-1	2720	0.5	1019	1.0 W	208/3	-	X	X			X	SVAID 250610	SEE NOTES 9

REMARKS:

- UL 762 LISTED (GREASE)
- VENTED ROOF CURB
- ROOF CURB
- GREASE TROUGH
- HINGED ROOF CURB
- WEATHERPROOF DISCONNECT SWITCH
- SOLID STATE SPEED CONTROLLER
- BACKDRAFT DAMPER
- EXHAUST FANS PROVIDED BY HOOD MANUFACTURER. REFER TO HOOD DRAWINGS FOR MORE INFORMATION.

FAN SCHEDULE 2

MARK	QUANTITY	NECK SIZE	DIFFUSER FACE OR CEILING GRID SIZE	TYPE	AIR PATTERN	MOUNTING	DUTY	MATERIAL	STEEL	MANUFACTURER	MODEL NUMBER	REMARKS
S-1	AS NOTED	24 x 24	24 x 24	X				X		METAL-AIRE / TITUS	5000-6 / TDC-AA	FRN SQUARE to ROUND ADAPTER
S-4	AS NOTED	12 x 12	12 x 12	X				X	X	METAL-AIRE / TITUS	5000-1 / TDC-AA	FRN SQUARE to ROUND ADAPTER
S-5	14'Ø	24x24	24x24	X				X	X	METAL-AIRE / TITUS	7000 / PAS-AA	VERTICAL DISCHARGE
R-1	22 x 22	24 x 24	24 x 24		X			X	X	METAL-AIRE / TITUS	CC5-FB-TB / 50FF	FRN SQUARE to ROUND ADAPTER, FULLY REMOVABLE FACE

NOTES:

- DIFFUSERS IN SURFACE MOUNTED CEILINGS SHALL BE PROVIDED WITH OPPOSED BLADE DAMPERS.
- REFER TO ARCHITECTURAL DRAWINGS (A7.1, A7.2) FOR CEILING TYPES.

AIR DEVICE SCHEDULE 3

OUTDOOR AIR CALCULATIONS MECHANICAL CODE - TABLE 403.3.1.1								
Existing Unit	Area (Sq Ft)	Occupancy Classification	Occupant Density #/1000 Sq Ft	People outdoor airflow rate in breathing zone, (Rp) cfm/person	Area outdoor airflow rate in breathing zone, (Ra) cfm/sqft	Exhaust airflow rate cfm/fixture	Required Zone outdoor airflow (cfm)	Actual Outdoor airflow (cfm)
RTU-1	587	DINING	100	7.5	0.18	-	546	600
RTU-2	1027	KITCHEN	20	7.5	0.12	-	277	600
						Total	823	1200
EF-1	2	RESTROOMS	-	-	-	70	140	200

ITEM	OA	RA	SA	EA	PRESSURE
EF-1	--	--	--	1700	-1700
EF-2	--	--	--	1700	-1700
EF-3	--	--	--	100	-100
EF-4	--	--	--	100	-100
RTU-1	600	2800	3400	--	+600
RTU-2	600	4400	5000	--	+600
MAU-1	2720	--	--	--	+2720
TOTAL	3920	7200	8400	3600	+320

OUTDOOR AIR CALCULATIONS 8

AIR BALANCE SCHEDULE CFM 4

B-22-511575.000
RCV: 9/12/2022 2:26 PM

LIS ARCHITECTURE ENGINEERING
 LAND INVESTMENT SERVICES, LLC
 AA 26002040 CA NO: 6853 LB1057
 ARCHITECTURE / ENGINEERING OFFICE
 21450 Palm Beach Blvd.
 Suite 2064, Oviedo, FL 32765
 Phone: (321) 244-0402
 facsimile: (321) 244-9419

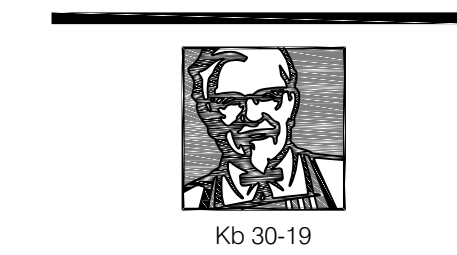
THIS ITEM HAS BEEN ELECTRONICALLY SIGNED AND SEALED BY ROBERT WAYNE CASE, PE ON JUNE 24, 2022. USING A DIGITAL SIGNATURE. PRINTED COPIES OF THIS DOCUMENT ARE NOT CONSIDERED SIGNED AND SEALED AND THE SIGNATURE MUST BE VERIFIED ON ANY ELECTRONIC COPIES.

Digitally signed by ROBERT W CASE
 Date: 2022.09.12 12:05:07 -04'00'

ROBERT WAYNE CASE
 FLORIDA PE #44643
 PLAN SET REVISIONS:
 06/22/22 - BUILDING COMMENTS
 09/12/22 - BUILDING COMMENTS

CONTRACT DATE: 12-18-2019
 BUILDING TYPE: Kb 30-19
 PLAN VERSION:
 SITE NUMBER:
 ENTITY NUMBER:
 STORE NUMBER:
 LIS PROJECT: 2019-303

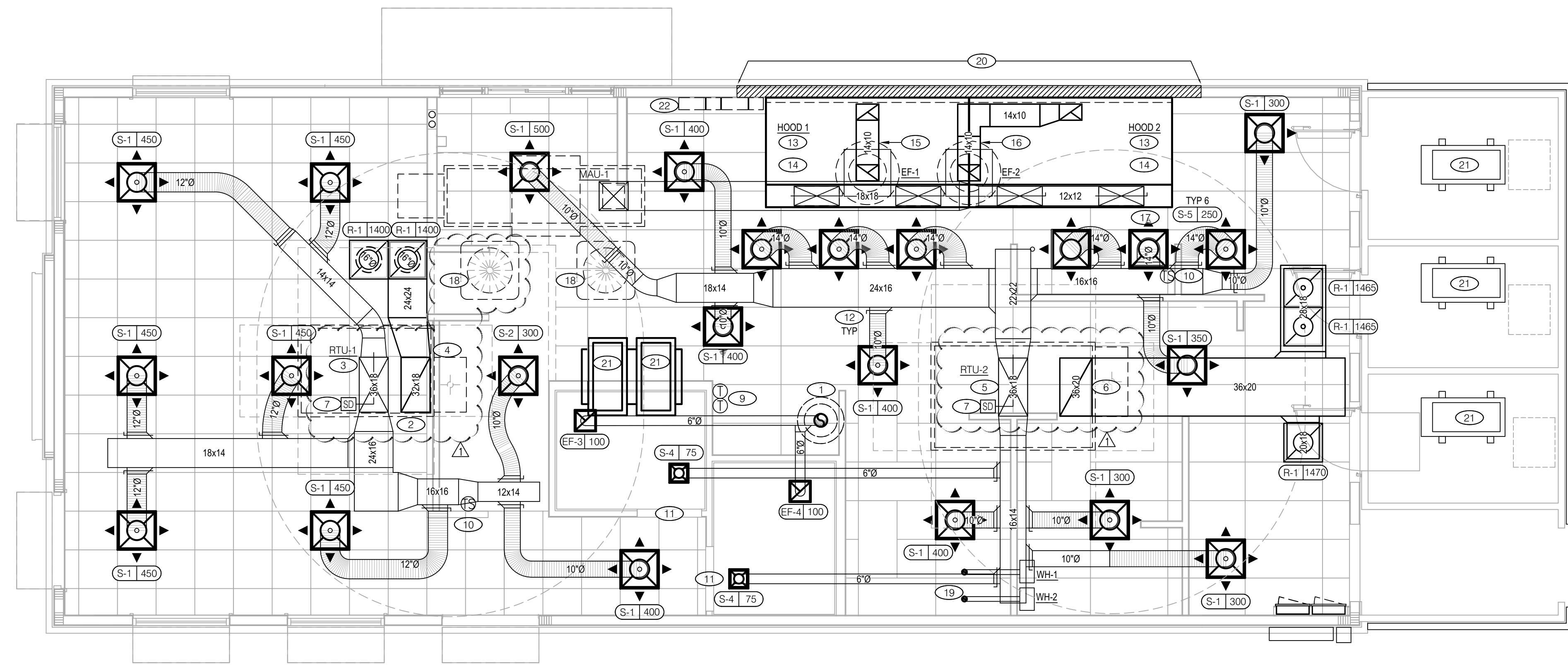
KFC
 OAKLEAF CORNER OUTPARCEL 3
 DUVAL COUNTY, FL



MECHANICAL SCHEDULES AND NOTES

M1.0
 PLOT DATE: 03/29/2022

NOTE:
THE HOOD FIRE SUPPRESSION CONTRACTOR SHALL SUBMIT
PLANS FOR EVALUATION AND APPROVAL PRIOR TO
COMMENCEMENT OF NEW WORK.



NOTE:
PROVIDE SECONDARY CONDENSATE PROTECTION IN COMPLIANCE
WITH FBC - MECH 307.2.3 AND RELATED SUBSECTIONS. PROVIDE
SAFETY SHUT-OFF SWITCHES IN CONDENSATE DRAINS.

DUCT AND DIFFUSER PLAN 1/4"=1'-0" **A**

- GENERAL NOTES**
- A. INSTALLATION AND TERMINATION OF THE POWERED VENT SYSTEM FOR THE WATER HEATER SHALL BE IN ACCORDANCE WITH THE VENT AND WATER HEATER MANUFACTURER'S INSTALLATION INSTRUCTIONS, AND LOCAL CODES AND REQUIREMENTS.
 - B. DINING ROOM / KITCHEN LIGHT FIXTURE LOCATIONS ARE CRITICAL. COORDINATE DUCTWORK LOCATIONS SO AS NOT TO CONFLICT WITH LIGHT FIXTURE LOCATIONS. COORDINATE WITH ELECTRICAL DRAWINGS FOR CEILING GRID / LIGHT FIXTURE LOCATIONS.
 - C. THERMOSTATS SHALL BE PROGRAMMABLE WITH SUBBASE AND REMOTE TEMPERATURE SENSOR. REFER TO KEYNOTES 9 and 10, THIS SHEET.
 - D. S/A DUCTS FOR RTU-1 (FRONT OF HOUSE) SHALL RUN WITHIN THE TRUSS WEB SPACE; COORDINATE WITH STRUCTURAL DRAWINGS. SEE DETAIL 1 / S4.2.

- 1 8"Ø EXHAUST AIR DUCT UP TO ROOF MOUNTED MUSHROOM CAP, 200 CFM. SEE DETAIL 2 ON SHEET M4.0. PROVIDE BACKDRAFT DAMPER IN EACH EXHAUST DUCT CONNECTING EXHAUST FAN TO 8"Ø EXHAUST DUCT. EXHAUST FANS + MOTOR DAMPERS SHALL BE WIRED TO RESTROOM LIGHTS AND CONTROLLED BY MOTION SENSOR. COORDINATE WITH ELECTRICAL.
- 2 THE INSIDE OF THE RETURN AIR DUCTS SHALL BE LINED FROM THE AIR HANDLING EQUIPMENT TO A DISTANCE OF 10' FROM THE UNIT WITH ULTRALITE #300 - 1/2" THICK OR OTHER APPROVED DUCT LINEAR ACOUSTICAL BOARD. THE MATERIAL SHALL BE FITTED CAREFULLY ON THE INSIDE OF THE DUCT AND SHALL BE FASTENED ON WITH CEMENT SUPPLEMENTED BY SCREWS AND WASHERS ON TOP AND SIDES OF DUCT.
- 3 32 x 16 SUPPLY AIR DUCT. CONNECT TO SUPPLY AIR OPENING AT ROOFTOP UNIT, RTU-1 (COORDINATE WITH RTU SUPPLIER / SPECIFICATIONS).
- 4 32 x 18 RETURN AIR DUCT. CONNECT TO RETURN AIR OPENING AT ROOFTOP UNIT, RTU-1 (COORDINATE WITH RTU SUPPLIER / SPECIFICATIONS).
- 5 36 x 18 SUPPLY AIR DUCT. CONNECT TO SUPPLY AIR OPENING AT ROOFTOP UNIT, RTU-2 (COORDINATE WITH RTU SUPPLIER / SPECIFICATIONS).
- 6 36 x 20 RETURN AIR DUCTS. CONNECT TO RETURN AIR OPENING AT ROOFTOP UNIT, RTU-2 (COORDINATE WITH RTU SUPPLIER / SPECIFICATIONS).
- 7 FURNISH AND INSTALL SMOKE DETECTOR IN THE SUPPLY AIR DUCT, IN ACCORDANCE WITH LOCAL CODES. DUCT SMOKE DETECTOR WIRED BY ELECTRICAL CONTRACTOR, COORDINATE WITH ELECTRICAL.
- 8 FURNISH AND INSTALL 3" SCHEDULE 40 PVC WATER HEATER CONCENTRIC VENT TO ROOF. COORDINATE WORK WITH ALL TRADES.

- 9 THERMOSTAT.
- 10 THERMOSTAT REMOTE SENSOR. MOUNT AT 60" A.F.F.
- 11 UNDERCUT RESTROOM DOORS MIN. 1/2" FOR MAKE-UP AIR.
- 12 PROVIDE MANUAL VOLUME DAMPER, TYPICAL AT ALL SUPPLY AIR AND RETURN AIR DIFFUSERS, IN ACCESSIBLE LOCATION WHENEVER POSSIBLE. FOR NON ACCESSIBLE LOCATIONS PROVIDE REMOTE CABLE CONTROL UNIT BOWDEN MODEL 270-301 AS MANUFACTURED BY YOUNG REGULATOR CO. OR APPROVED EQUAL.
- 13 CANTILEVER HOOD SUPPORT RODS AWAY FROM DUCTWORK. USE ANGLE TO OFFSET THE SUPPORTS.
- 14 SUPPLY, RETURN, OR EXHAUST DUCTWORK RUN BETWEEN ROOF TRUSSES.
- 15 14 x 10 EXHAUST AIR DUCT DOWN. TRANSITION AS NECESSARY TO CONNECT TO EXHAUST HOOD. EXHAUST DUCT SHALL OFFSET IN CEILING SPACE TO CONNECT TO ROOF EXHAUST FAN EF-1. SEE HOOD DETAILS ON DRAWING M3.0. SEE DETAILS ON SHEET M4.0 FOR FIRE PROTECTION OF DUCTWORK.
- 16 14 x 10 EXHAUST AIR DUCT DOWN. TRANSITION AS NECESSARY TO CONNECT TO EXHAUST HOOD. EXHAUST DUCT SHALL OFFSET IN CEILING SPACE TO CONNECT TO ROOF EXHAUST FAN EF-2. SEE HOOD DETAILS ON DRAWING M3.0. SEE DETAILS ON SHEET M4.0 FOR FIRE PROTECTION OF DUCTWORK.
- 17 MAKE-UP AIR CONNECTION TO HOOD PLENUM. BALANCE TO 680 CFM EACH (TYP OF 4)
- 18 MAKE-UP AIR CONDENSING UNIT ON ROOF EQUIPMENT STAND BY G.C.

- 19 FURNISH AND INSTALL 3" SCHEDULE 40 PVC CONCENTRATE WATER HEATER INTAKE/VENT TERMINATION. RUN THRU WEBS TO OUTFALL AT VENT ON ROOF.
- 20 EXTERIOR HOOD WALL SHALL BE MTL STUD FRAMING, CEMENT BOARD WITH STAINLESS COVER EXTENDING 18" BEYOND ALL SIDES. SEE SHEET A5.2 FOR WALL DETAILS.
- 21 COORDINATE LOCATION OF REFRIGERATION CONDENSING UNITS FOR ICE MACHINES, COOLERS AND FREEZERS.
- 22 HOOD FIRE SUPPRESSION SYSTEM, SEE SHEET M3.1.

NOT USED **D**

GENERAL NOTES **C**

KEY NOTES **B**
B-22-511575.000
RCV: 9/12/2022 2:26 PM
PLOT DATE: 03/29/2022

ENGINEERING OFFICE
21450 Palm Beach Blvd.
Ave., Fla. 33920
Phone: (239) 693-9244
facsimile: (239) 693-9828

LIS ARCHITECTURE
ENGINEERING
LAND INVESTMENT SERVICES, LLC
AA 26002040 CA NO: 6853 LB1057
ARCHITECTURE / ENGINEERING OFFICE
21450 Palm Beach Blvd.
Ave., Fla. 33920
Phone: (239) 693-9244
facsimile: (239) 693-9828

THIS ITEM HAS BEEN ELECTRONICALLY
SIGNED AND SEALED BY ROBERT
WAYNE CASE, PE ON JUNE 24, 2022.
USING A DIGITAL SIGNATURE. PRINTED
COPIES OF THIS DOCUMENT ARE NOT
CONSIDERED SIGNED AND SEALED AND
THE SIGNATURE MUST BE VERIFIED ON
ANY ELECTRONIC COPIES.

Digitally
signed by
**ROBERT W
CASE**
Date:
**2022.09.12
12:05:29
-04'00'**
ROBERT WAYNE CASE
FLORIDA PE #44643

PLAN SET REVISIONS:

06/22/22 - BUILDING COMMENTS
09/12/22 - BUILDING COMMENTS

CONTRACT DATE: 12-18-2019
BUILDING TYPE: Kb 30-19
PLAN VERSION:
SITE NUMBER:
ENTITY NUMBER:
STORE NUMBER:
LIS PROJECT: 2019-303

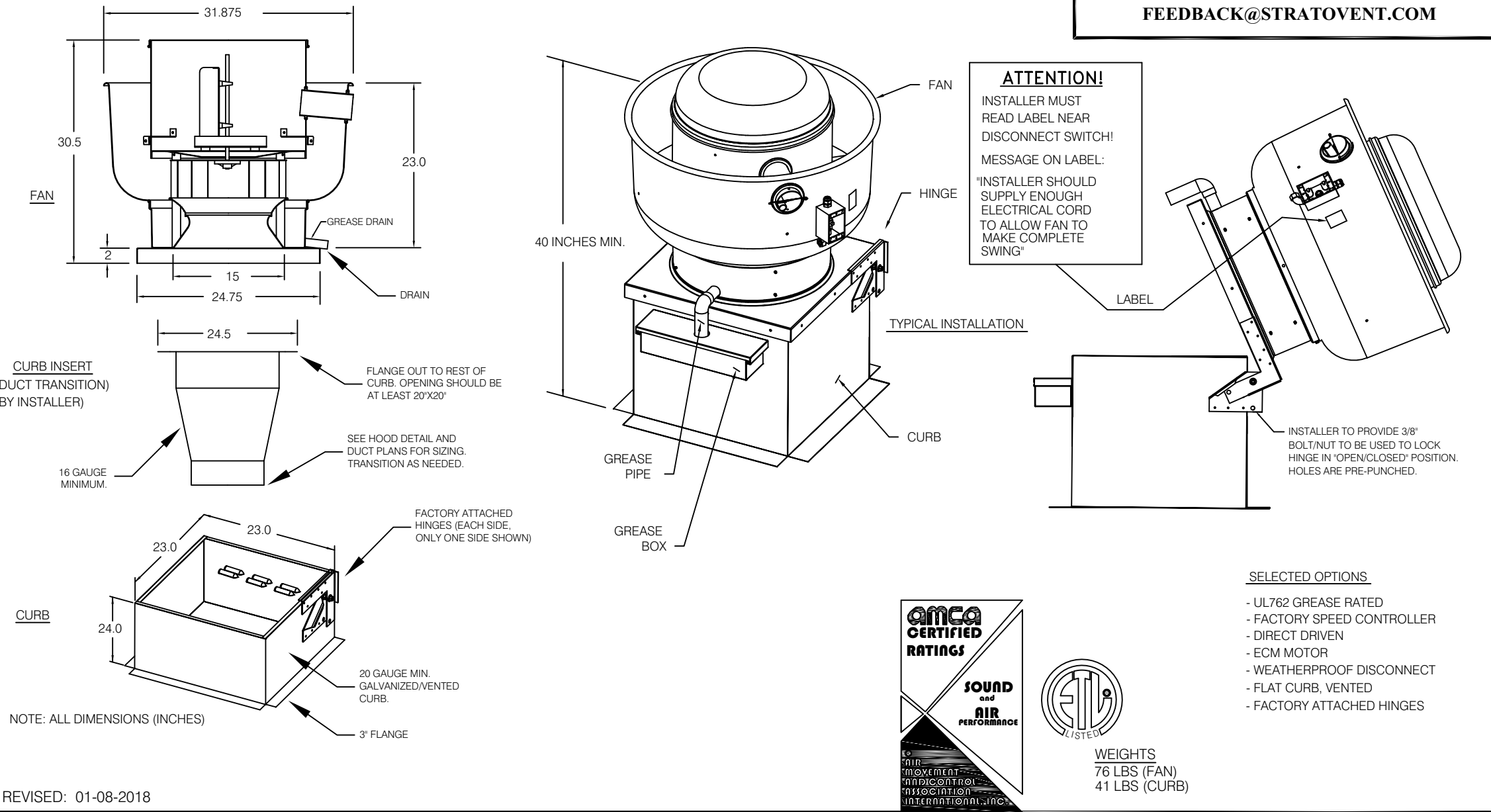
KFC
OAKLEAF CORNER OUTPARCEL 3
DUVAL COUNTY, FL



**MECHANICAL
DIFFUSER AND
DUCT PLAN**
M2.0

STRATOVENT EXHAUST FAN

TAG	STRATOVENT MODEL #	CFM	ESP.	RPM	H.P.	B.H.P.	Ø	VOLT	FLA	MCA/MOP	WEIGHT (LBS.)	SONES
KEF-1	SVDUBSHFA	1700	1.300	1414	0.75	0.55	1	115	9.8	12.3/20	117	15
KEF-2	SVDUBSHFA	1700	1.300	1414	0.75	0.55	1	115	9.8	12.3/20	117	15



MUA FAN INFORMATION

FAN UNIT NO.	TAG	STRATOVENT MODEL #	DESIGN CFM	ESP.	RPM	BLOWER H.P.	B.H.P.	Ø	VOLT	FLA	COOLING COIL ENTERING DB TEMP	COOLING COIL LEAVING DB TEMP	COOLING COIL LEAVING WB TEMP	COOLING COIL LEAVING WB TEMP	COOLING COIL TOTAL CAPACITY	COOLING COIL SENSIBLE CAPACITY	COOLING COIL LATENT CAPACITY	WEIGHT (LBS.)
3	MUA-1	SV-AQ-G12-MPU	2720	0.500	962	2.000	1.2	3	208	5.7	93.0°F	77.0°F	76°F	67.5°F	96.0 MBH	44.5 MBH	51.2 MBH	1347

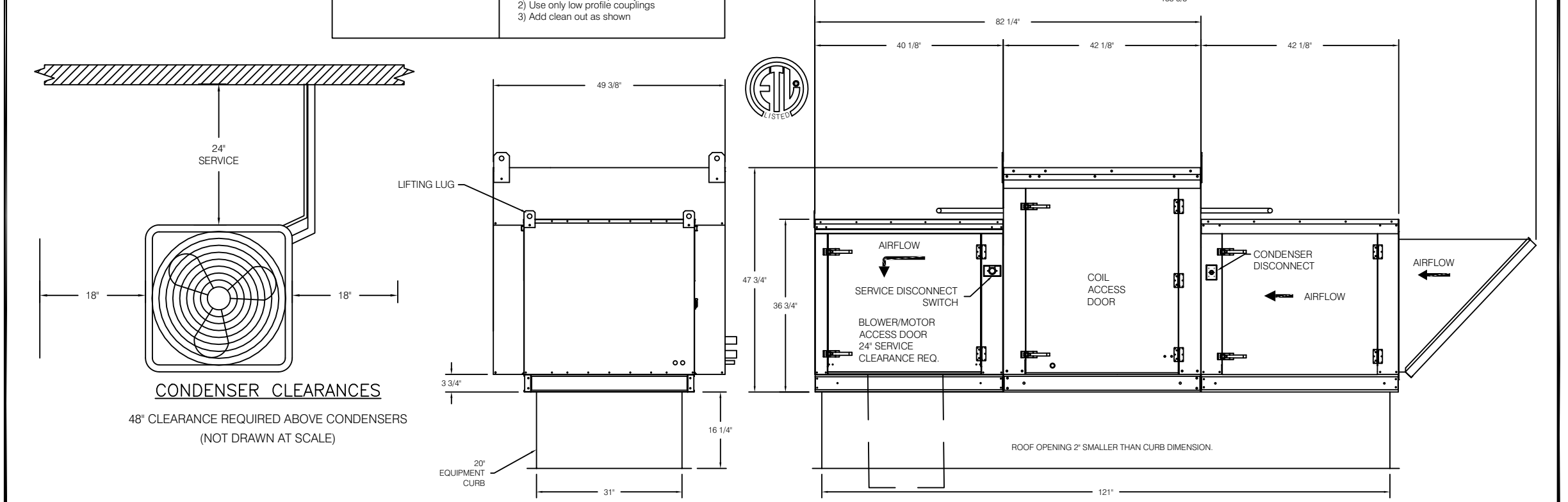
CONDENSER DETAILS

CONDENSER NO.	TONNAGE	VOLTAGE	PHASE	FREQUENCY	MCA	FLA	MAX FUSE SIZE	MIN WIRE SIZE	SEER
1	3	208-230	3 PHASE	60 HZ	14.5 Amps	11.9 Amps	20 Amps	10 AWG	14
2	5	208-230	3 PHASE	60 HZ	21.4 Amps	17.4 Amps	30 Amps	10 AWG	14

-CONDENSERS SHIP LOOSE, FIELD PIPING AND SUPPORT BY OTHERS

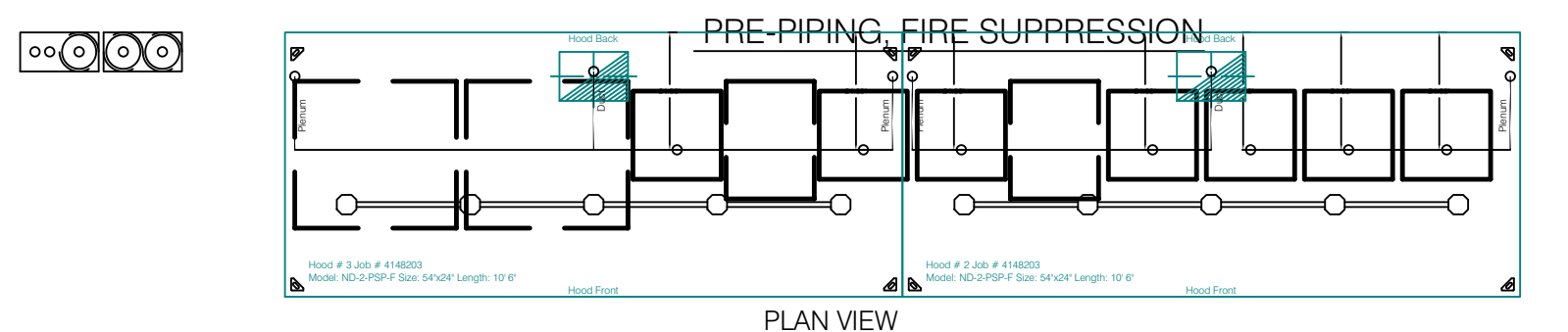
SELECTED FEATURES:

- G90 GALVANIZED HOUSING
- SIDE INTAKE, MESH FILTERS
- DOWN DISCHARGE
- PREWIRED DISCONNECT
- LIFT OUT/HINGED DOORS
- VARIABLE SPEED PULLEYS
- GRAVITY BACKDRAFT DAMPER
- FLAT CURB, 121" X 31" X 20"



SYSTEM NOTES

- SYSTEM SIZE: ANSUL - 8.0 GALLONS TOTAL R102
- SNIP PRE-PIPING: 4.0 GALLONS
- TOTAL FLOW POINTS: 4.0 MAX.
- HOOD 1 of 2: 10'-6" L x 6' W x 24" H
- HOOD 2 of 2: 10'-6" L x 6' W x 24" H

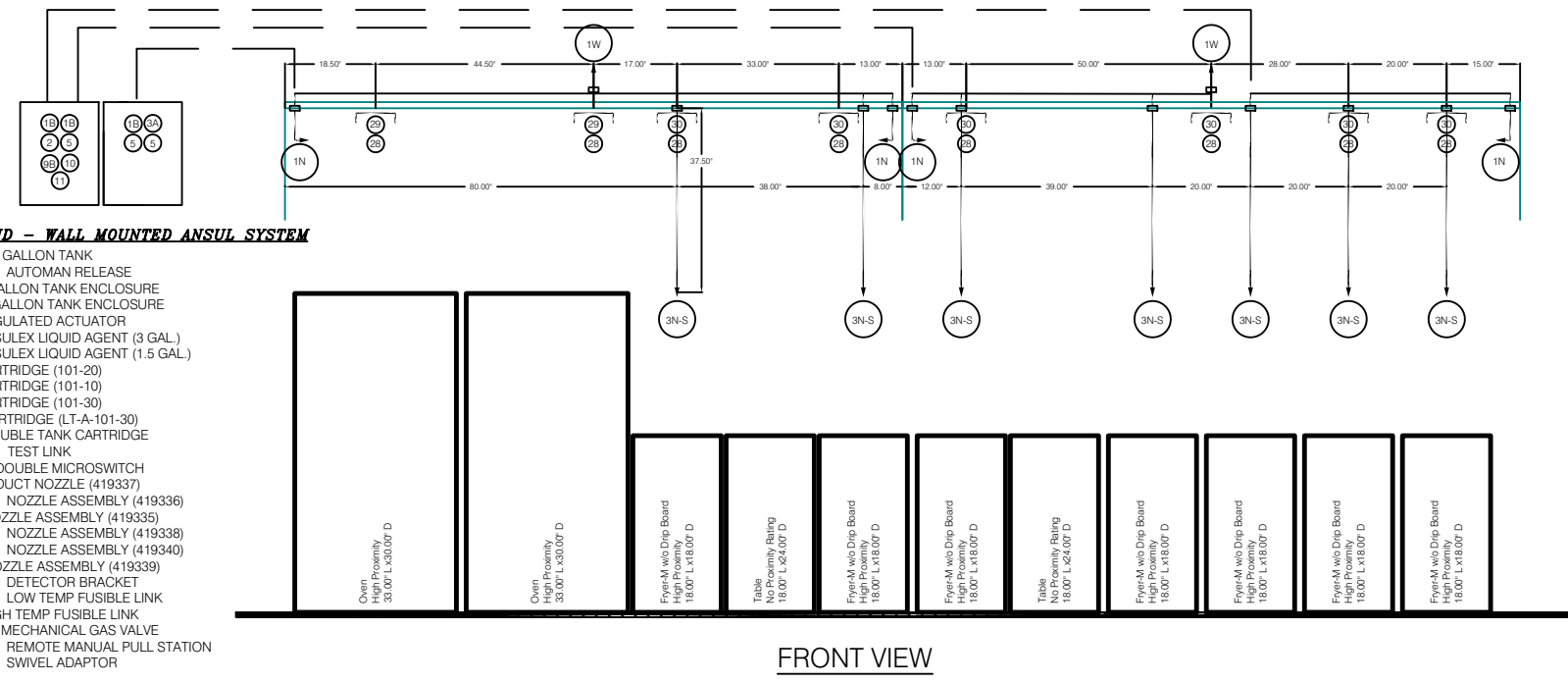


GENERAL NOTES

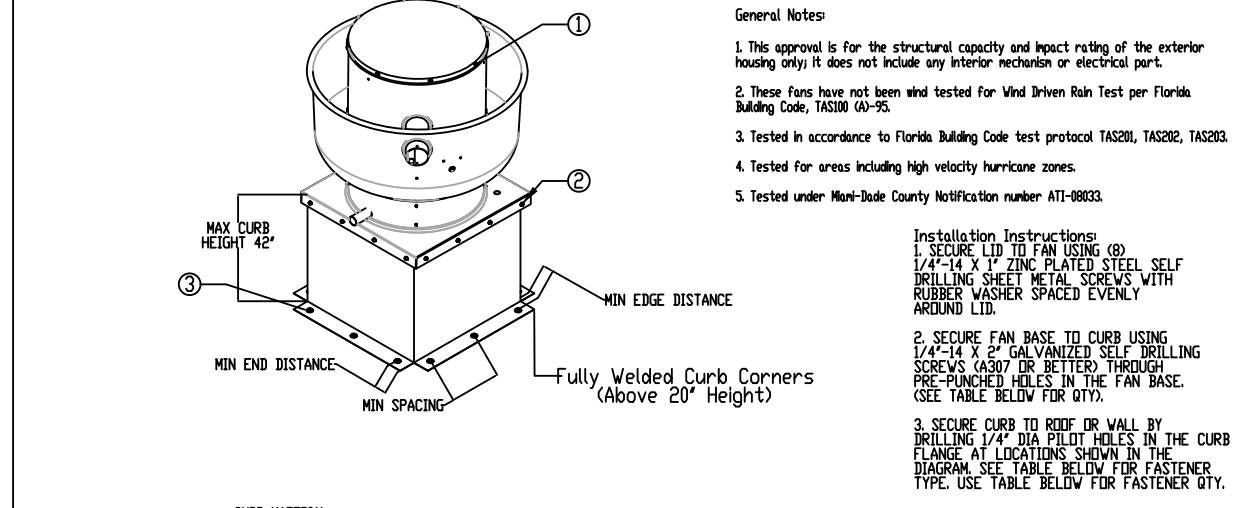
- PRE-PIPING FROM STRATOVENT INCLUDES BLEEDING, DROPS AND NOZZLES ATTACHED TO THE HOOD. THE PARTS FOR WALL-MOUNTED SYSTEM OPTIONALLY SOURCED FROM STRATOVENT BY DISTRIBUTOR/OWNER OR GENERAL CONTRACTOR. INSTALLATION SCHEDULED BY CONSTRUCTION TEAM.
- ALL NOZZLE HEIGHT AND PLACEMENT TO BE VERIFIED BY INSTALLER AND A4U PER ANSUL GUIDELINES. FIELD PIPE DROPS AS SHOWN.
- MAXIMUM 9 ELBOWS IN SUPPLY LINE. MINIMUM 72 INCHES OF AGENT LINE FROM TANK TO FIRST NOZZLE.
- ALL PIPING TO BE 3/8" SCH 40 BLACK IRON.
- THIS FIRE SYSTEM COMPLIES WITH U.L. 300 REQUIREMENTS.
- SEE SCOPE OF WORK SHEETS TO DETERMINE RESPONSIBILITIES AND CONTACT INFORMATION.

LEGEND - WALL MOUNTED ANSUL SYSTEM

- 3.5 GALLON TANK
- AUTOMAT RELEASE
- 3 GALLON TANK ENCLOSURE
- 3 GALLON TANK ENCLOSURE
- REGULATED ACTUATOR
- ANSUL LIQUID AGENT (1.5 GAL.)
- ANSUL LIQUID AGENT (1.5 GAL.)
- CARTRIDGE (101-10)
- CARTRIDGE (101-20)
- CARTRIDGE (101-30)
- DOUBLE TANK CARTRIDGE
- TEST LINK
- DOUBLE MISCOSWITCH
- DUCT NOZZLE (419837)
- NOZZLE ASSEMBLY (419838)
- NOZZLE ASSEMBLY (419839)
- NOZZLE ASSEMBLY (419840)
- NOZZLE ASSEMBLY (419841)
- DETECTOR BRACKET
- LOW TEMP FUSIBLE LINK
- HIGH TEMP FUSIBLE LINK
- M207 MECHANICAL GAS VALVE
- REMOTE MANUAL PULL STATION
- SWING ADAPTOR

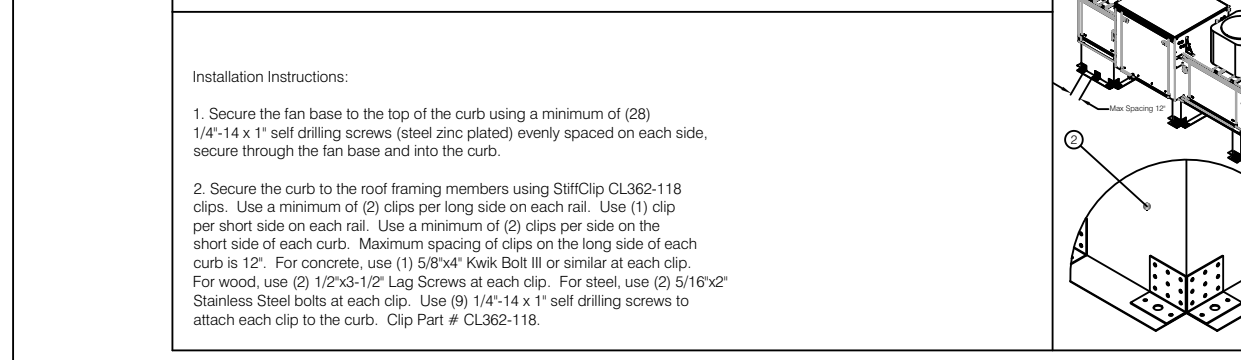


Multi-Node NMI Aluminum Up-Blast Fans



Fan Model	Curb to Fan (Dist)		Curb to Fan (Dist)		Wood (Dist)		Steel (Dist)		Concrete (Dist)	
	Per Side	Total	Per Side	Total	Per Side	Total	Per Side	Total	Per Side	Total
Dist	3	12	3	12	4	16	4	16	5	20

Miami-Dade - MPU Fan - NOA2



REVISIONS

NO.	DESCRIPTION	DATE



4641 Paragon Park, Raleigh, NC, 27616 PHONE: (919) 573-4250 FAX: (919) 573-4250 EMAIL: jeff.johnson@stratovent.com

KFC ADDRESS ANYTOWN, USA

DATE: 01/07/2020
DWG.#: 4148203
DRAWN BY: JJ-REG24
SCALE: NTS
MASTER DRAWING
SHEET NO. 2

ARCHITECTURE ENGINEERING
LIS
LAND INVESTMENT SERVICES, LLC
AA 26002040 CA NO: 6853 LB 1057
ARCHITECTURE / ENGINEERING OFFICE
Suite 2064 Ocala, FL 32765
Phone: (321) 244-0402
Facsimile: (321) 244-9419

THIS ITEM HAS BEEN ELECTRONICALLY SIGNED AND SEALED BY ROBERT WAYNE CASE, PE ON JUNE 24, 2022. USING A DIGITAL SIGNATURE. PRINTED COPIES OF THIS DOCUMENT ARE NOT CONSIDERED SIGNED AND SEALED AND THE SIGNATURE MUST BE VERIFIED ON ANY ELECTRONIC COPIES.

Digitally signed by ROBERT W CASE
Date: 2022.09.12 12:06:21 -0400'

ROBERT WAYNE CASE
FLORIDA PE #46454

PLAN SET REVISIONS:

- 06/22/22 - BUILDING COMMENTS
- 09/12/22 - BUILDING COMMENTS

CONTRACT DATE: 12-18-2019
BUILDING TYPE: Kb 30-19
PLAN VERSION:
SITE NUMBER:
ENTITY NUMBER:
STORE NUMBER:
LIS PROJECT: 2019-303

KFC
OAKLEAF CORNER OUTPARCEL 3
DUVAL COUNTY, FL

Kb 30-19

HOOD PLAN ELEVATIONS AND SECTIONS

M3.1

Provide 4-22 ga. - 1 1/8" wide hurricane straps per A/C unit.
 A) 2-3/8" x 3/4" long A307 steel galv. bolts and nuts fastened to web of Aluminum Stand Rail.
 B) 3-10-16 x 3/4" HWH #3 self drilling Hilti Kwik-Flex screws to web of Aluminum Stand Rail.

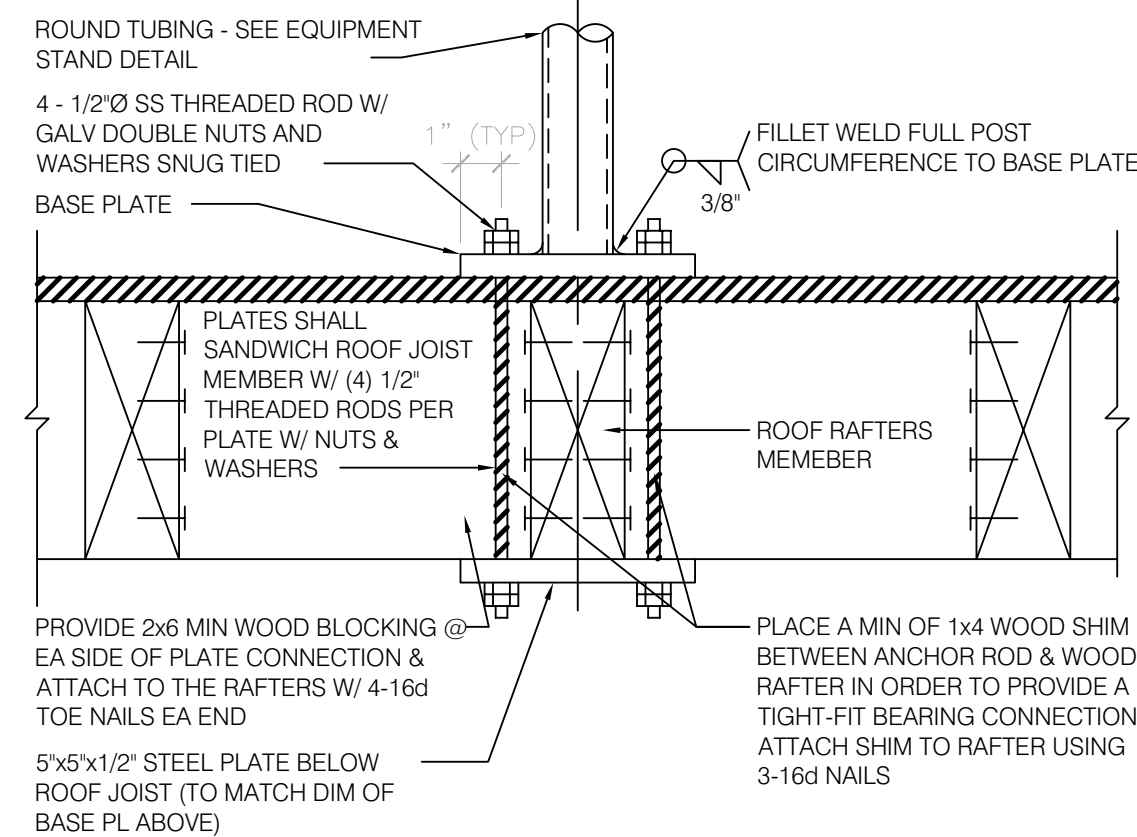
Pad (Typ.) By A/C Contractor Examples:
 Rubber Vibration Pad (RP: 3/4" - 2x2") (RP: 3/8" - 2x2")
 1/4" x 3/4" Galvanized Steel Thumbscrew tighten with Torque Wrench to refusal.
 1-1/2" Sch 40 Wall
 See Base Plate Connection Detail per Florida Product Approval #FL3203-R5 for 180mph wind load.

Notes:

- 1.) All Construction to meet Aluminum Association Specs.
- 2.) Vibration insulator pads shall be provided by the A/C Contractor so as not to cause vibration to existing sub-structure.
- 3.) Stand to be manufactured by RM Enterprises, 510 Business Pkwy, Royal Palm Beach, FL
- 4.) Strap down units with 22 gauge straps at 4 corners with tech screws.

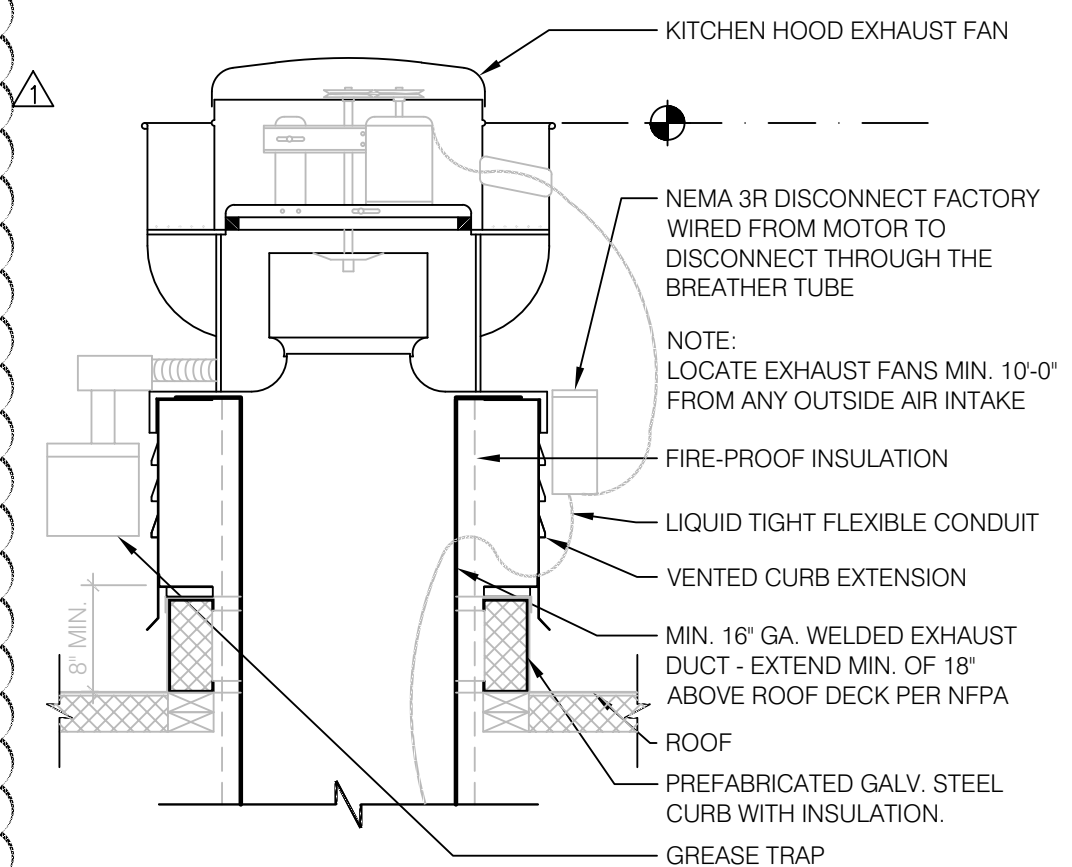
EQUIPMENT STAND MOUNTING DETAIL

13



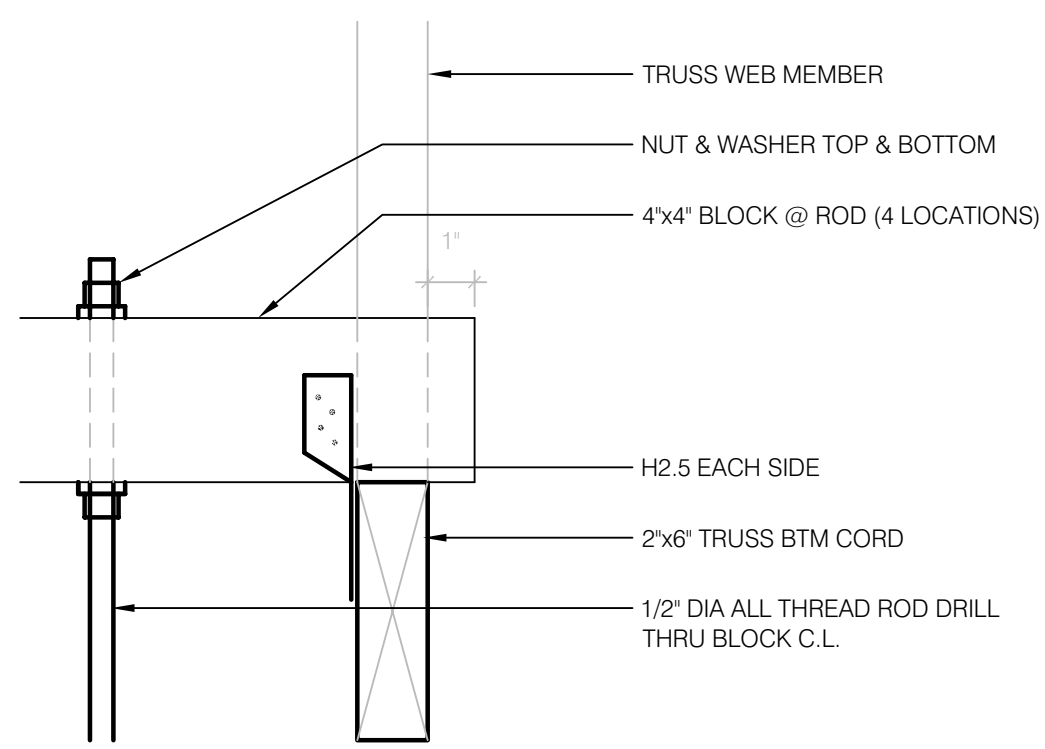
BASE PLATE CONNECTION DETAIL

5



EXHAUST FAN N.T.S.

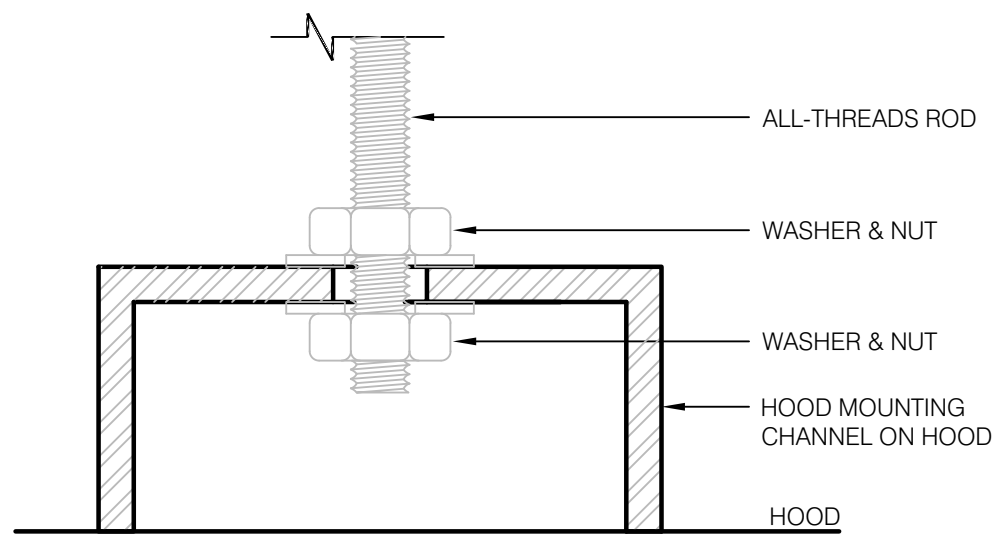
1



ROD ATTACHMENT

3\"/>

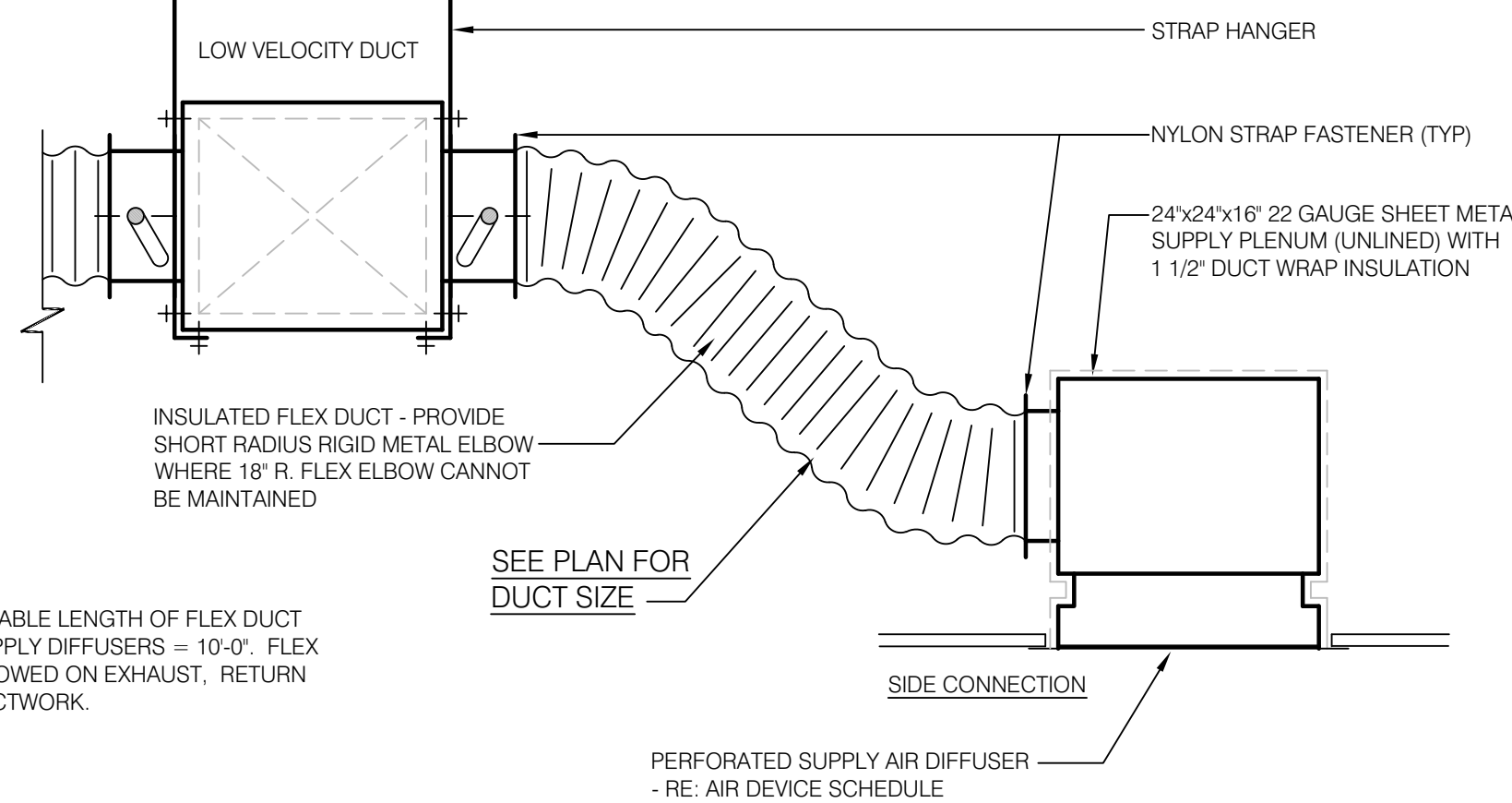
18



BOLT CONNECTION TO HOOD

N.T.S.

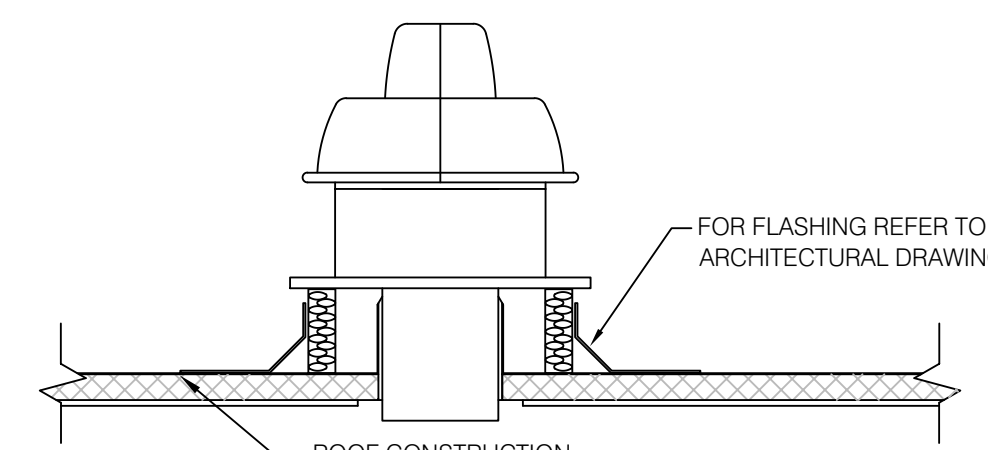
14



OPTIONAL KITCHEN AREA CEILING DIFFUSER (S-5) CONNECTION DETAIL

N.T.S.

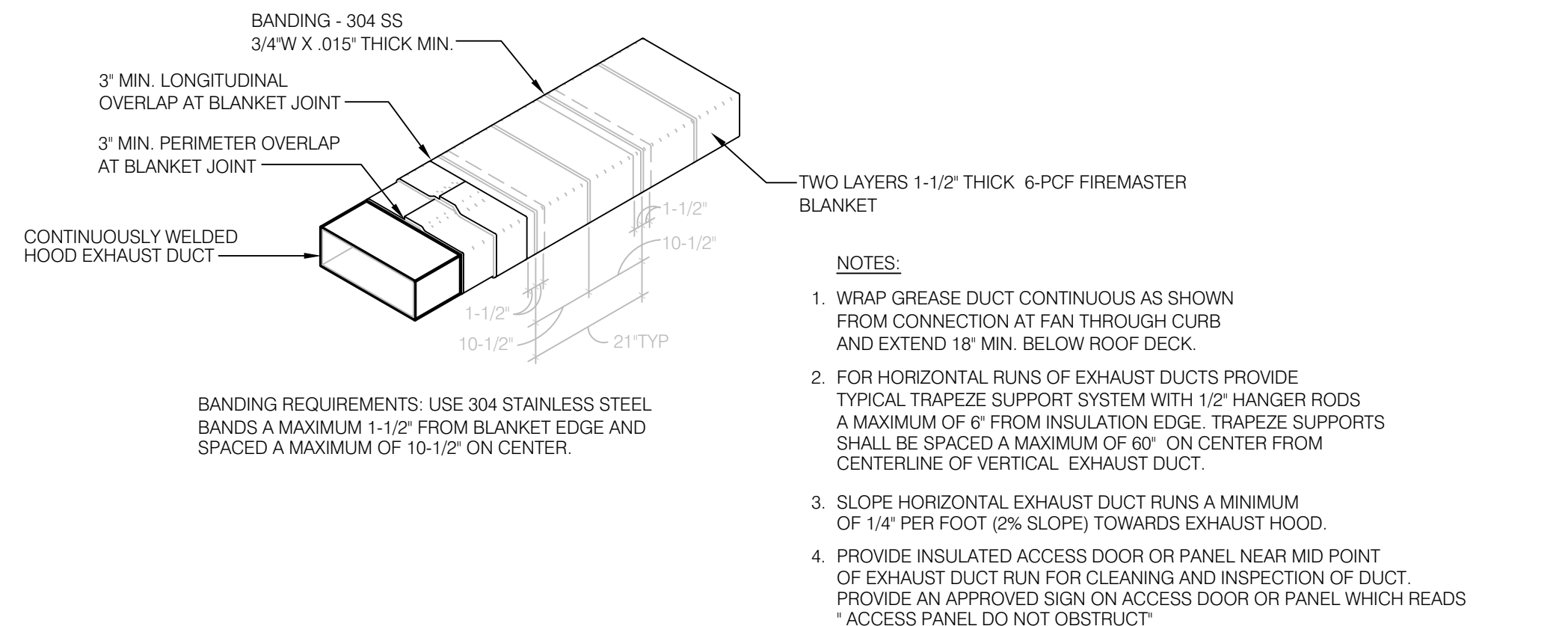
6



ROOF MOUNTED EXHAUST CAP

N.T.S.

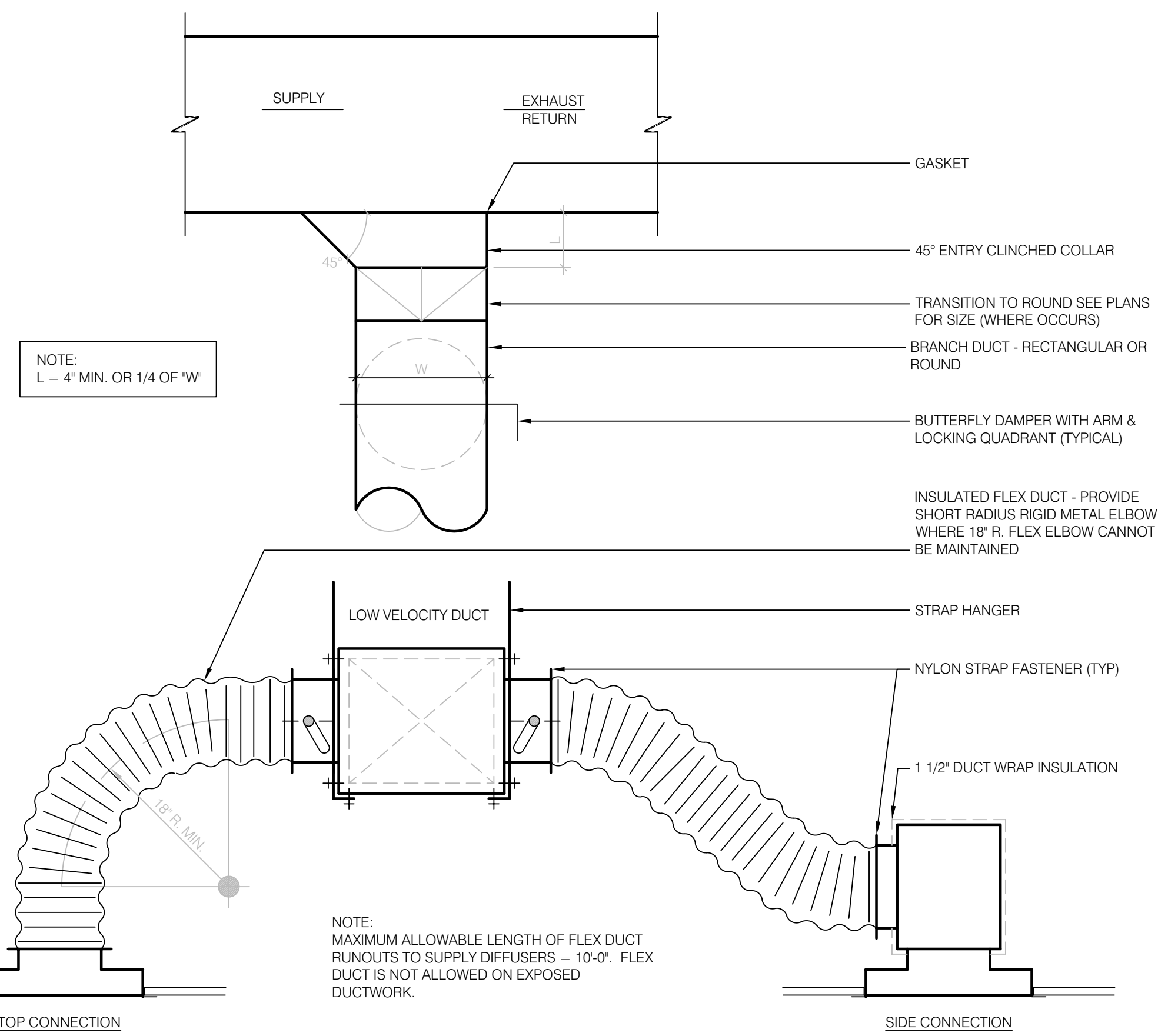
2



KITCHEN HOOD EXHAUST DUCT SYSTEM DETAIL

N.T.S.

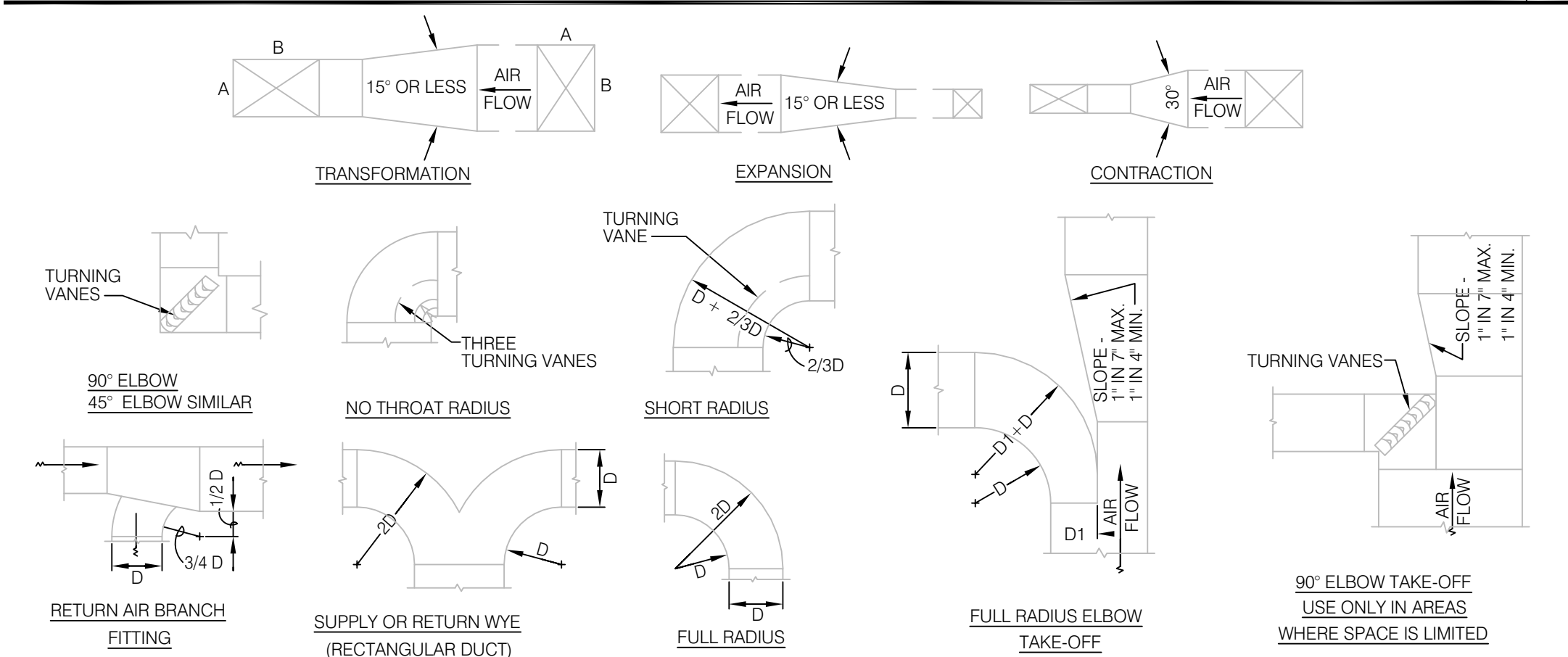
15



CEILING DIFFUSER CONNECTIONS

3/8\"/>

8



TYPICAL DUCTWORK DETAILS

N.T.S.

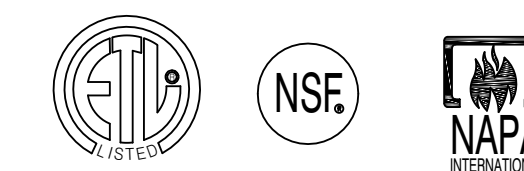
16

GENERAL NOTES

1. Exhaust duct collars may be field cut.
2. Exhaust duct air flow velocity shall be greater than 1500 FPM, lower if allowed by local codes.
3. Exhaust air flows must be balanced upon installation.
4. Fan operating speed should be rechecked after 60 days to ensure proper performance. Static pressure values are given for the hood only (unless otherwise noted).

SPECIFICATIONS

1. Hoods shall be constructed of minimum 20 gauge stainless steel with # 3 polish. All unexposed surfaces shall be constructed of minimum 18 gauge aluminumized steel.
2. UL classified aluminum or stainless steel baffie-type filters shall be easily removed for cleaning. Filter housing shall terminate in a pitched grease trough that drains into a removable stainless steel grease cup.
3. UL listed and NSF approved vapor proof light fixtures pre-wired to junction box at top of hood in accordance with NEC 70. Lamps to be screw-in CFL, provided by others.
4. Pre-piped fire suppression systems shall be located on the top of the hood and provided with the hood or by a certified technician. Final location of all nozzles and fire suppression drops to be locally approved and inspected.
5. Hood(s) shall be fabricated in accordance with NFPA Bulletin #96 and shall bear the NSF Seal of Approval. Hoods shall be listed under UL 710 EXHAUST HOODS FOR COMMERCIAL COOKING EQUIPMENT, Certified by ETL under FILE # 3054804-001.



THIS HOOD DESIGN IS BASED UPON STRATOVENT, MODEL SVND2. MANUFACTURED BY:
 STRATOVENT VENTILATION HOODS
 RALEIGH, NC 27616
 CONTACT: JEFF JOHNSON, 251-490-6114

HOOD NOTES AND SPECS (TYP.)

4

ARCHITECTURE
 ENGINEERING
LIS
 LAND INVESTMENT SERVICES, LLC
 AA 26002040 CA NO: 6853 LB 1057

THIS ITEM HAS BEEN ELECTRONICALLY SIGNED AND SEALED BY ROBERT WAYNE CASE, PE ON JUNE 24, 2022. USING A DIGITAL SIGNATURE. PRINTED COPIES OF THIS DOCUMENT ARE NOT CONSIDERED SIGNED AND SEALED AND THE SIGNATURE MUST BE VERIFIED ON ANY ELECTRONIC COPIES.



Digitally signed by
ROBERT W CASE
 Date:
2022.09.12 12:06:48 -04'00'

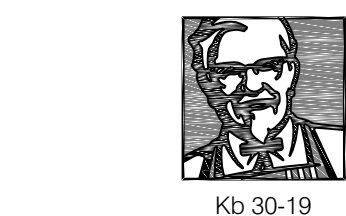
ROBERT WAYNE CASE
 FLORIDA PE #44643

PLAN SET REVISIONS:

06/22/22 - BUILDING COMMENTS	
09/12/22 - BUILDING COMMENTS	

CONTRACT DATE: 12-18-2019
 BUILDING TYPE: Kb 30-19
 PLAN VERSION:
 SITE NUMBER:
 ENTITY NUMBER:
 STORE NUMBER:
 LIS PROJECT: 2019-303

KFC
 OAKLEAF CORNER OUTPARCEL 3
 DUVAL COUNTY, FL



MECHANICAL SYSTEM DETAILS

M4.0

B-22-511575.000
 RCV: 9/12/2022 2:26 PM
 PLOT DATE: 03/29/2022