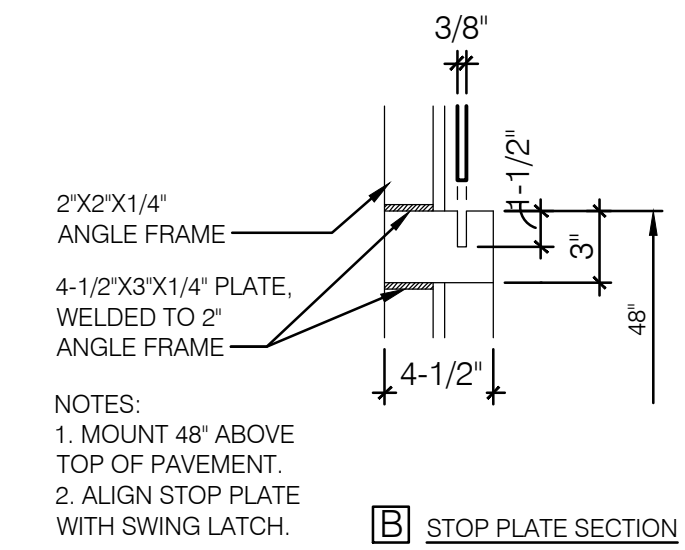
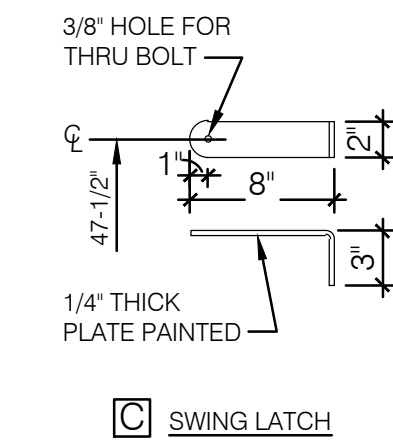
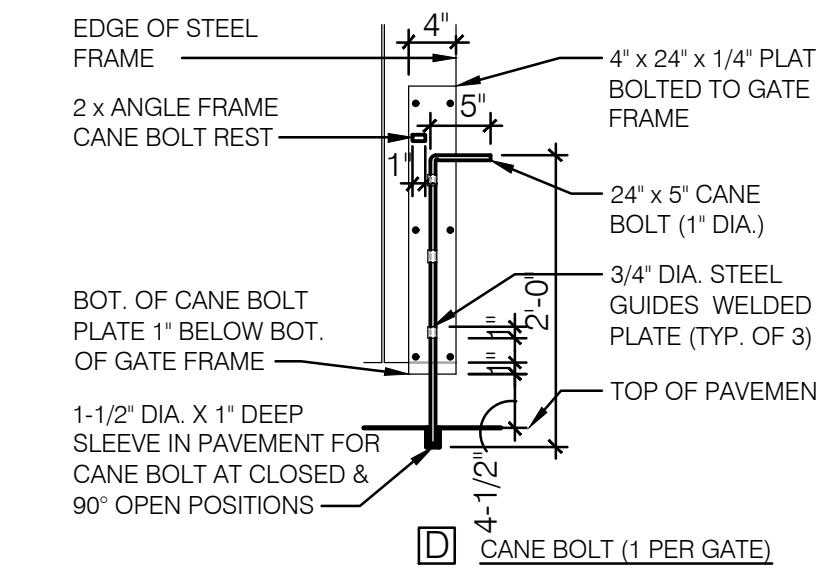
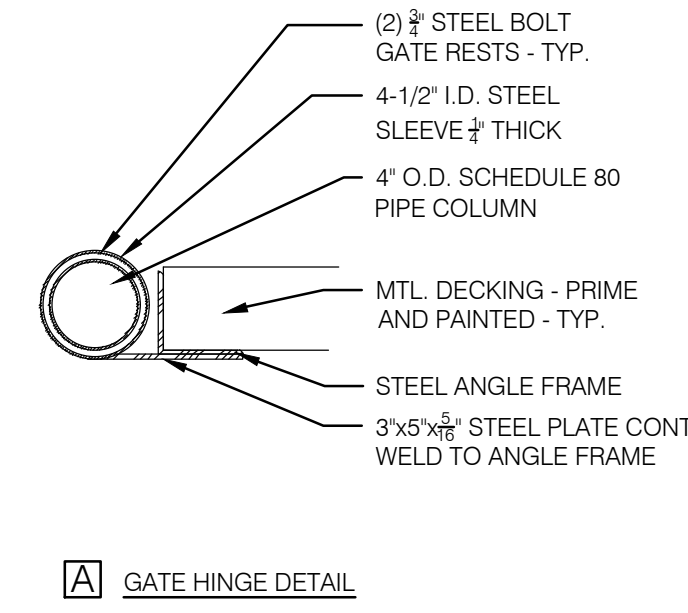
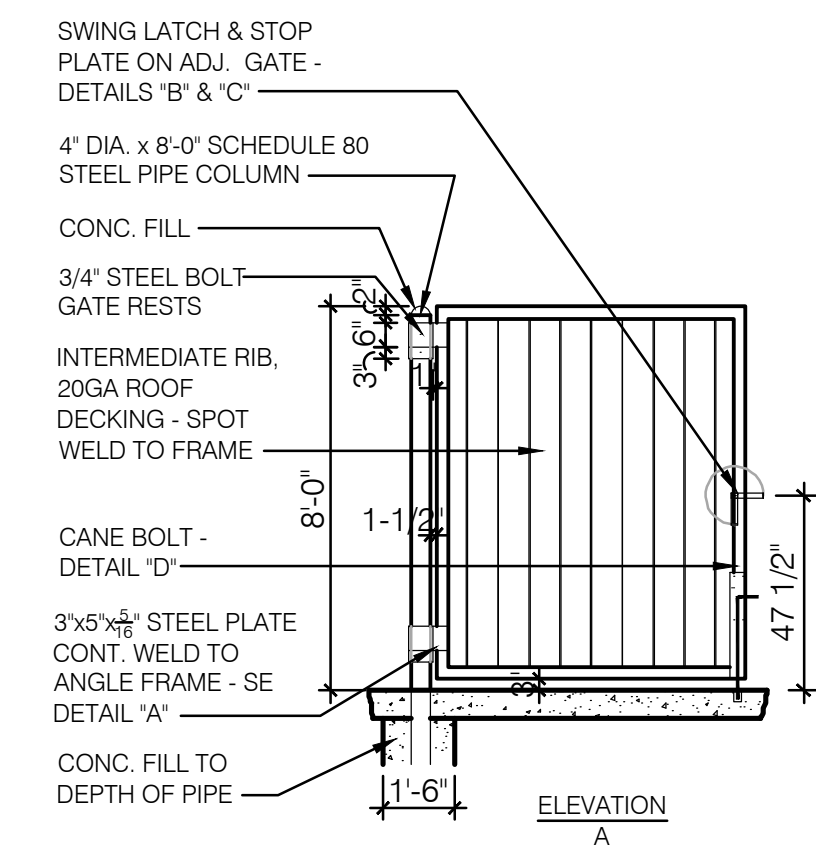
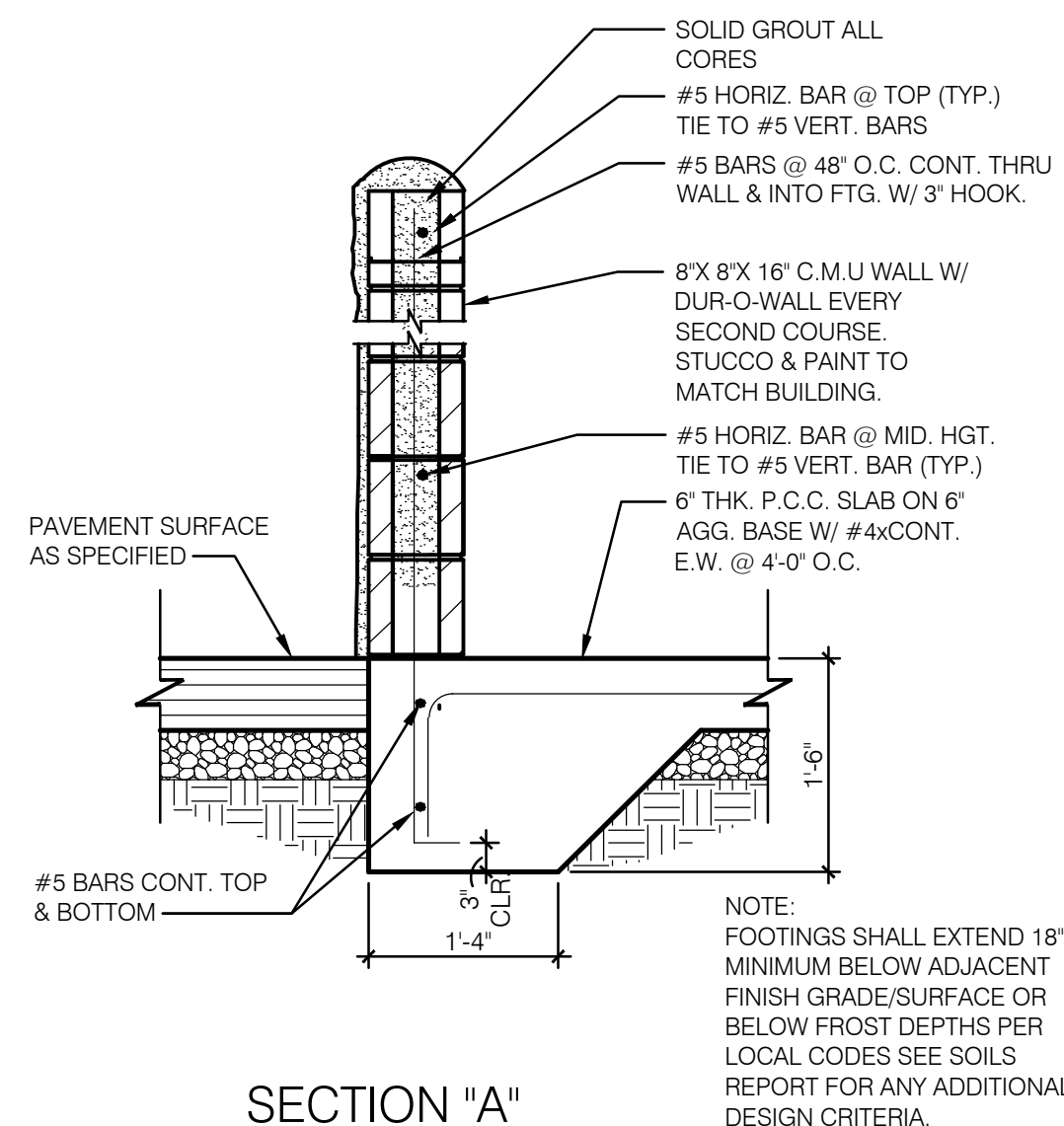


DUMPSTER ENCLOSURE PLAN AND ELEVATIONS 1/4" = 1'-0" **1**



NOTES:
1. MOUNT 48" ABOVE TOP OF PAVEMENT.
2. ALIGN STOP PLATE WITH SWING LATCH.

SECTION "A"

ELEVATION A

A GATE HINGE DETAIL

D CANE BOLT (1 PER GATE)

C SWING LATCH

B STOP PLATE SECTION

DUMPSTER ENCLOSURE DETAILS **2**

ENGINEERING OFFICE
21430 Palm Beach Blvd.
Avalon, Fla. 33420
Phone: (239) 693-9244
facsimile: (239) 693-9828

ARCHITECTURE / ENGINEERING OFFICE
10000 W. Broward Blvd., Suite 2064, Oakland Park, FL 32765
Phone: (321) 244-0402
facsimile: (321) 244-9419

LAND INVESTMENT SERVICES, LLC
AA 26002040 CA NO: 6853 LB1057

THIS ITEM HAS BEEN ELECTRONICALLY SIGNED AND SEALED BY ROBERT WAYNE CASE, PE ON JUNE 04, 2022. USING A DIGITAL SIGNATURE. PRINTED COPIES OF THIS DOCUMENT ARE NOT CONSIDERED SIGNED AND SEALED AND THE SIGNATURE MUST BE VERIFIED ON ANY ELECTRONIC COPIES.

Digitally signed by
ROBERT W CASE
Date:
2022.09.12 11:58:50 -04'00'

ROBERT WAYNE CASE
FLORIDA PE #44643

PLAN SET REVISIONS:

06/22/22 - BUILDING COMMENTS
09/12/22 - BUILDING COMMENTS

CONTRACT DATE: 12-18-2019
BUILDING TYPE: Kb 30-19
PLAN VERSION:
SITE NUMBER:
ENTITY NUMBER:
STORE NUMBER:
LIS PROJECT: 2019-303

KFC
OAKLEAF CORNER OUTPARCEL 3
DUVAL COUNTY, FL



DUMPSTER PLAN/DETAIL

C1.0

PLOT DATE: 03/29/2022