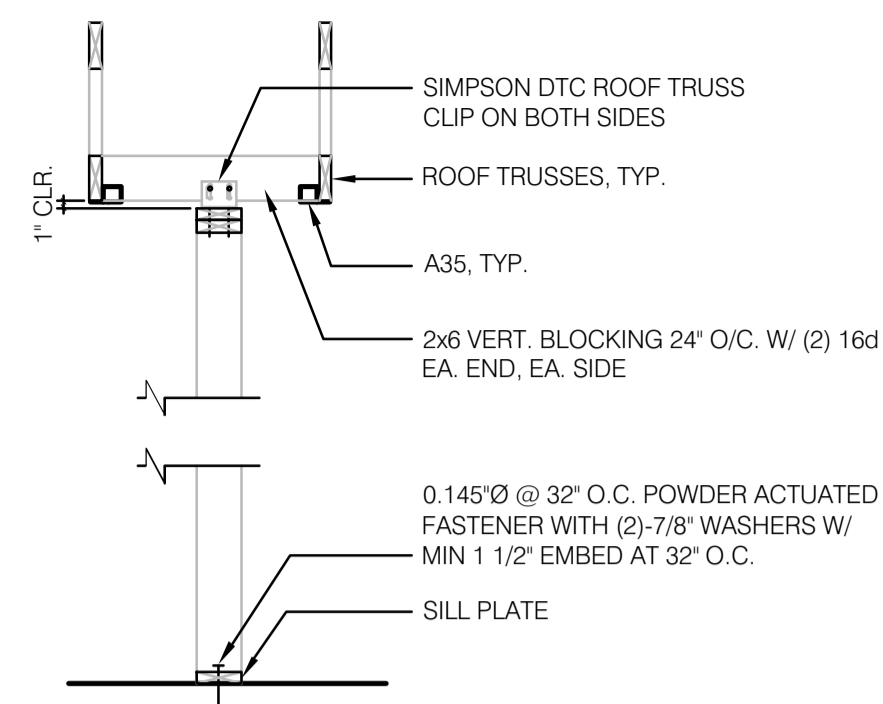
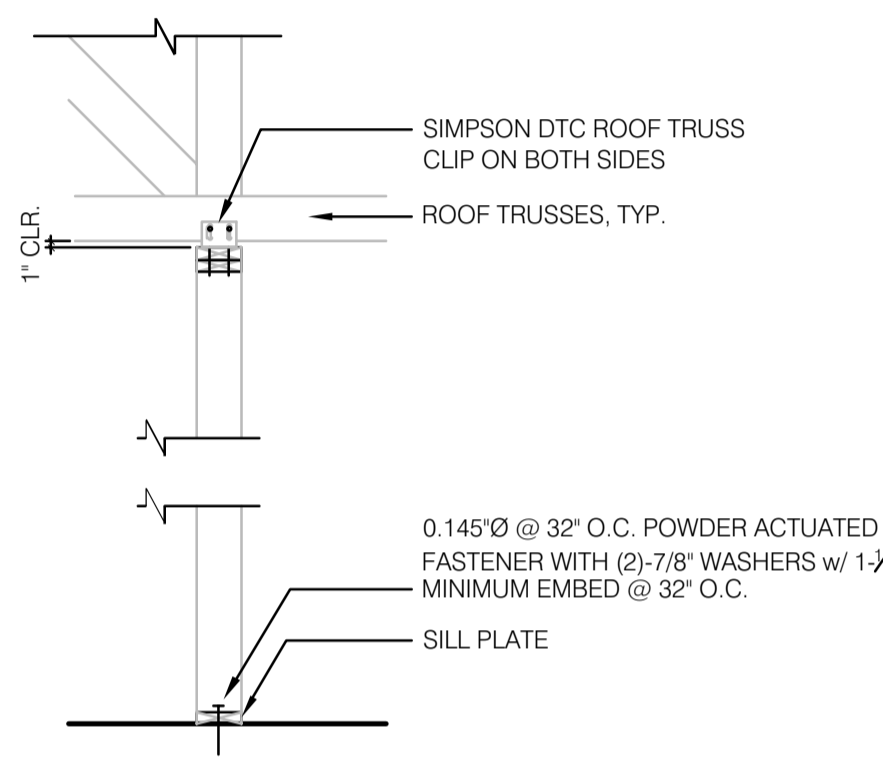


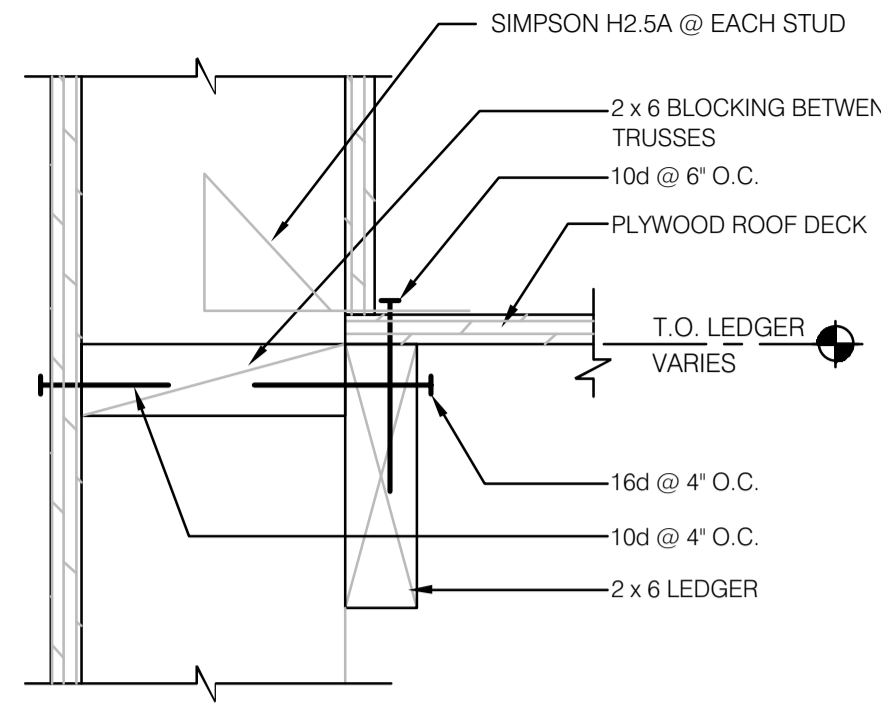
FRAMING ELEVATION @ OPENING 3/8" = 1'-0" **18**



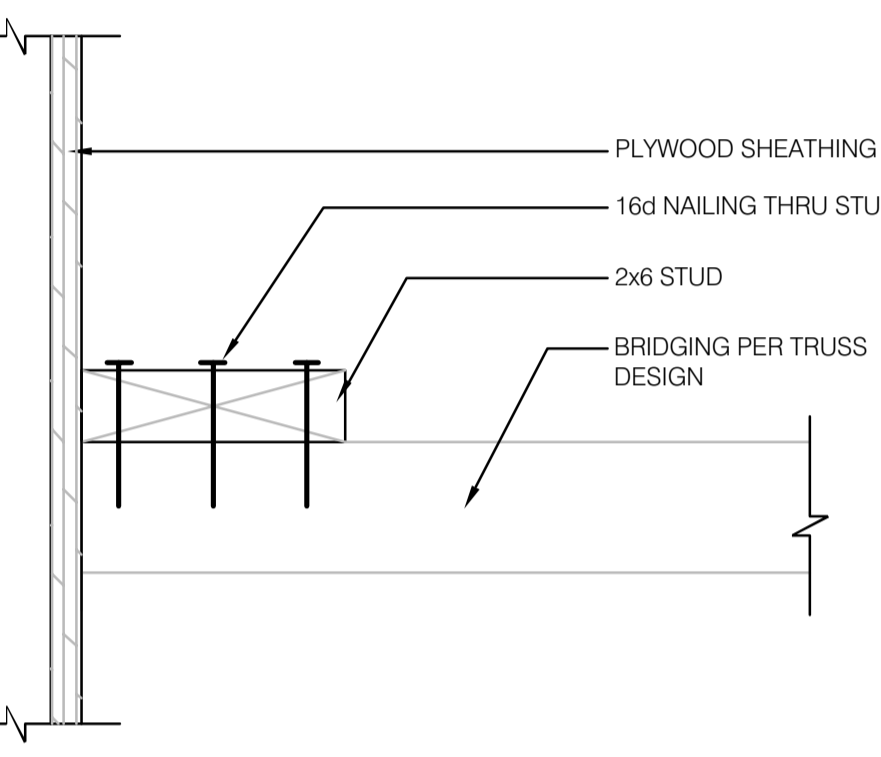
SUPPORT- PARALLEL TO TRUSS 1/2" = 1'-0" **13**



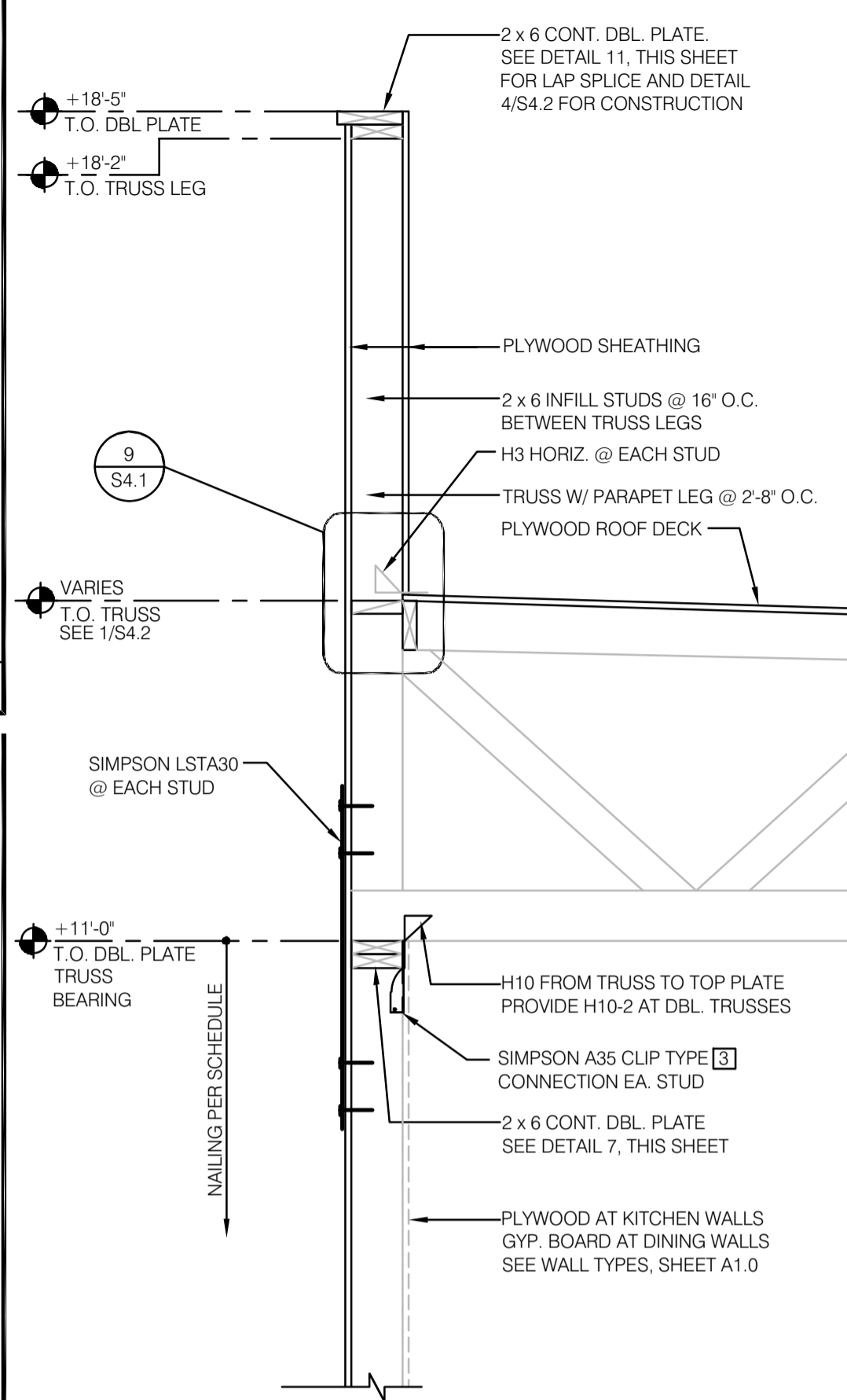
SUPPORT PERP. TO TRUSS 1/2" = 1'-0" **14**



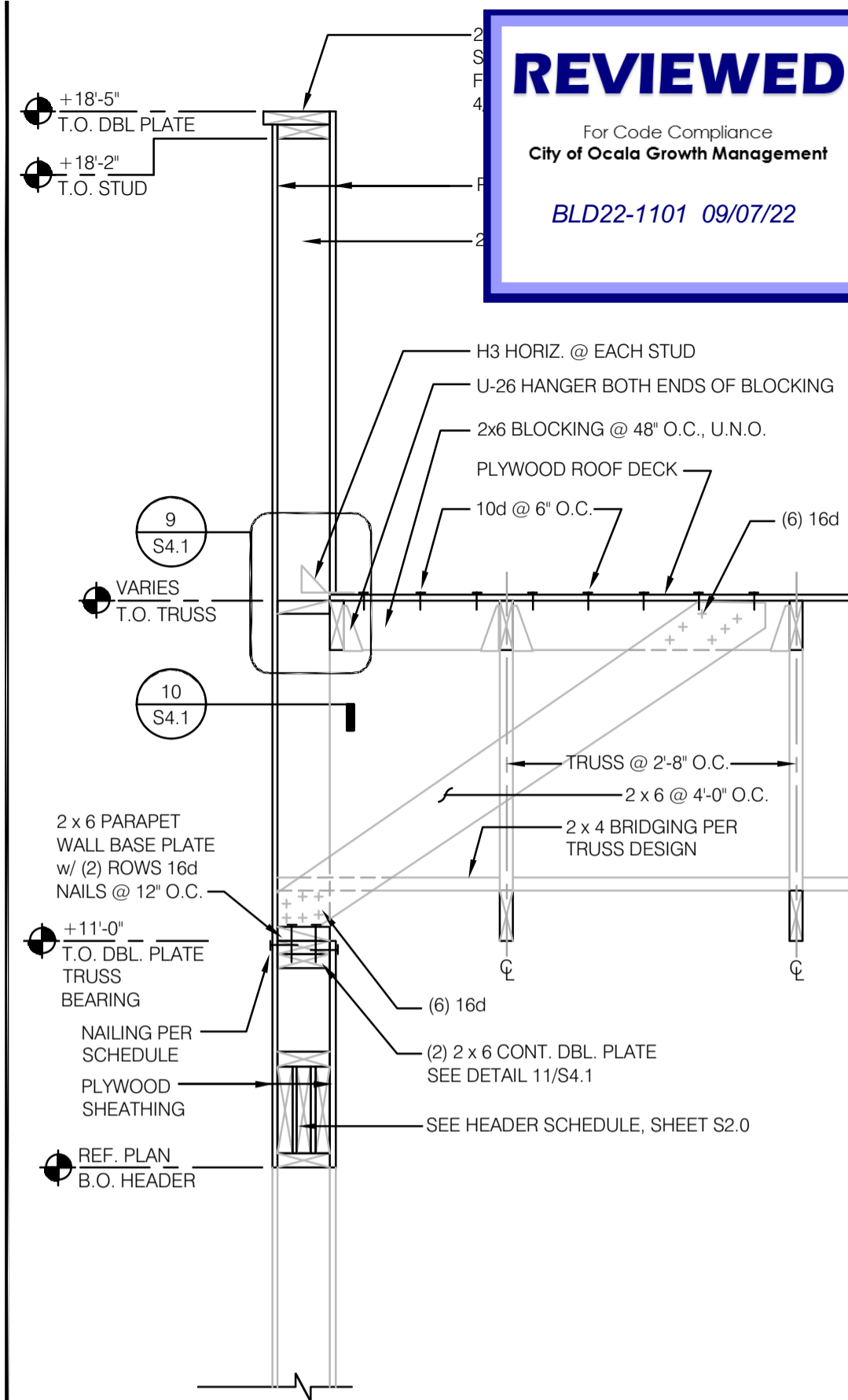
LEDGER DETAIL 3" = 1'-0" **9**



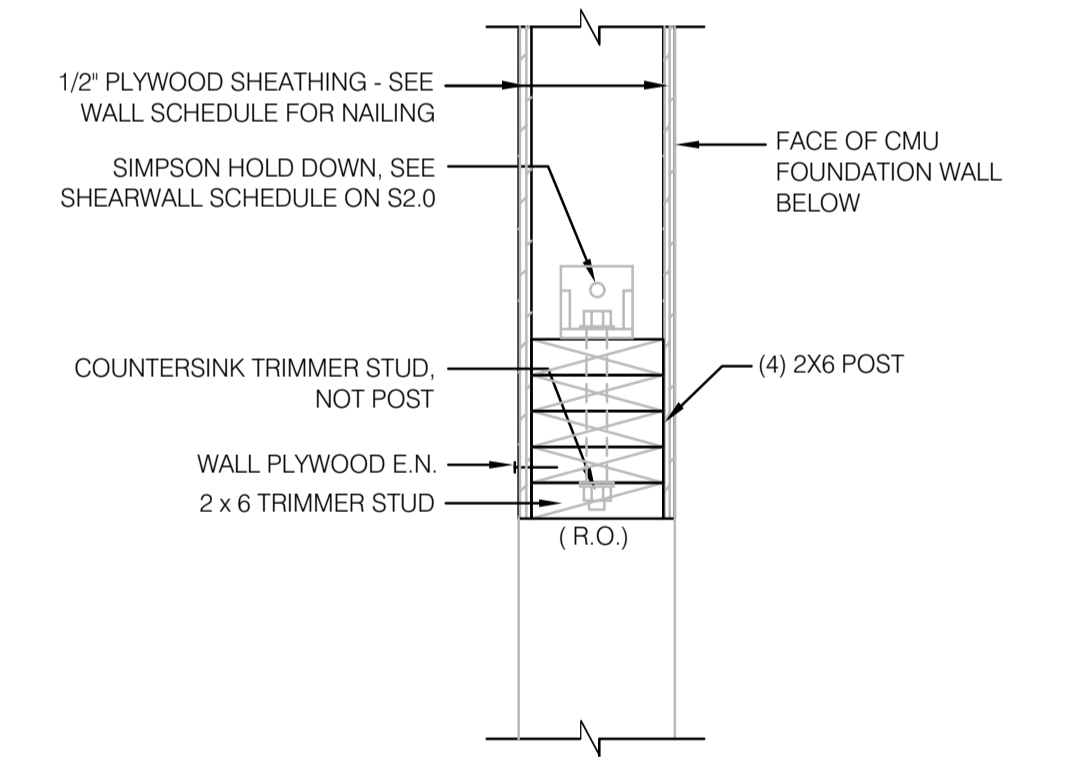
BRIDGING DETAIL 3" = 1'-0" **10**



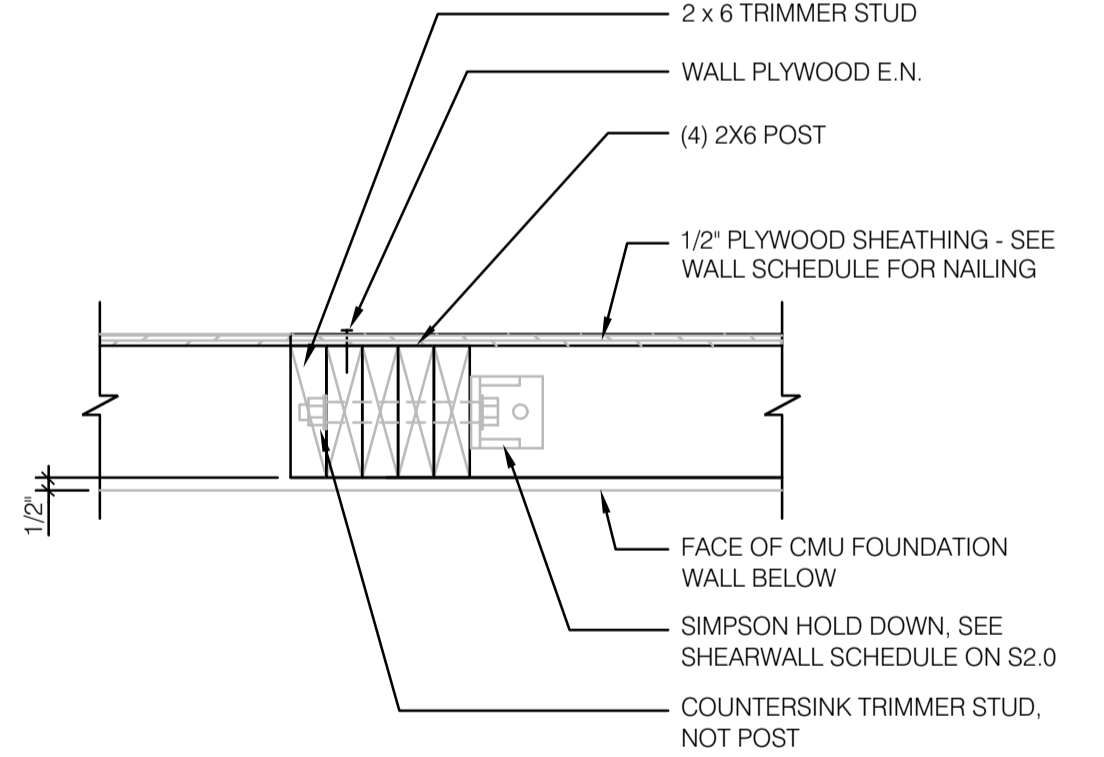
SIDE WALLS @ TRUSS 3/4" = 1'-0" **6**



FRONT + REAR WALLS @ TRUSS 3/4" = 1'-0" **2**



SW HOLD DOWN: END (FRONT) 1-1/2" = 1'-0" **19**



SW HOLD DOWN: END (SIDE) 1-1/2" = 1'-0" **15**

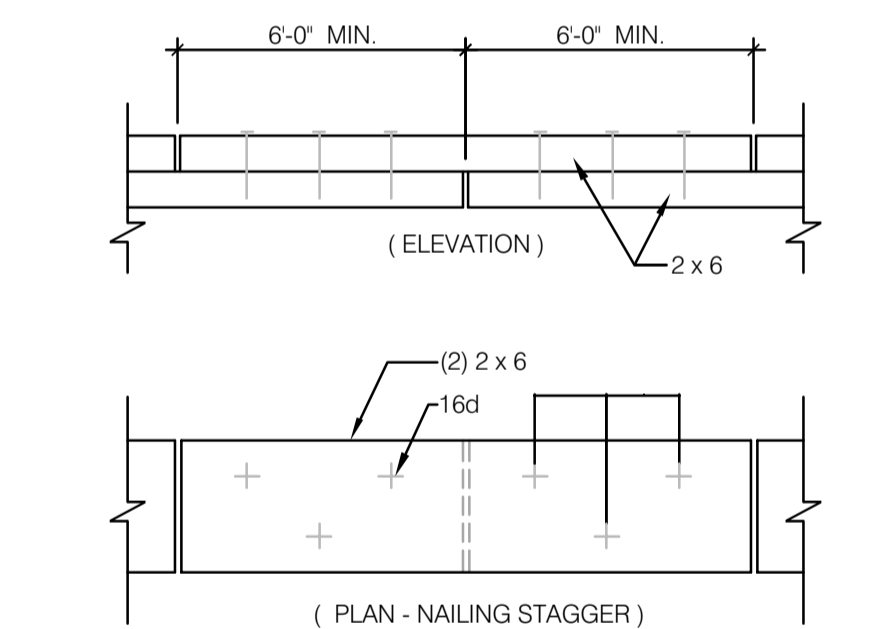
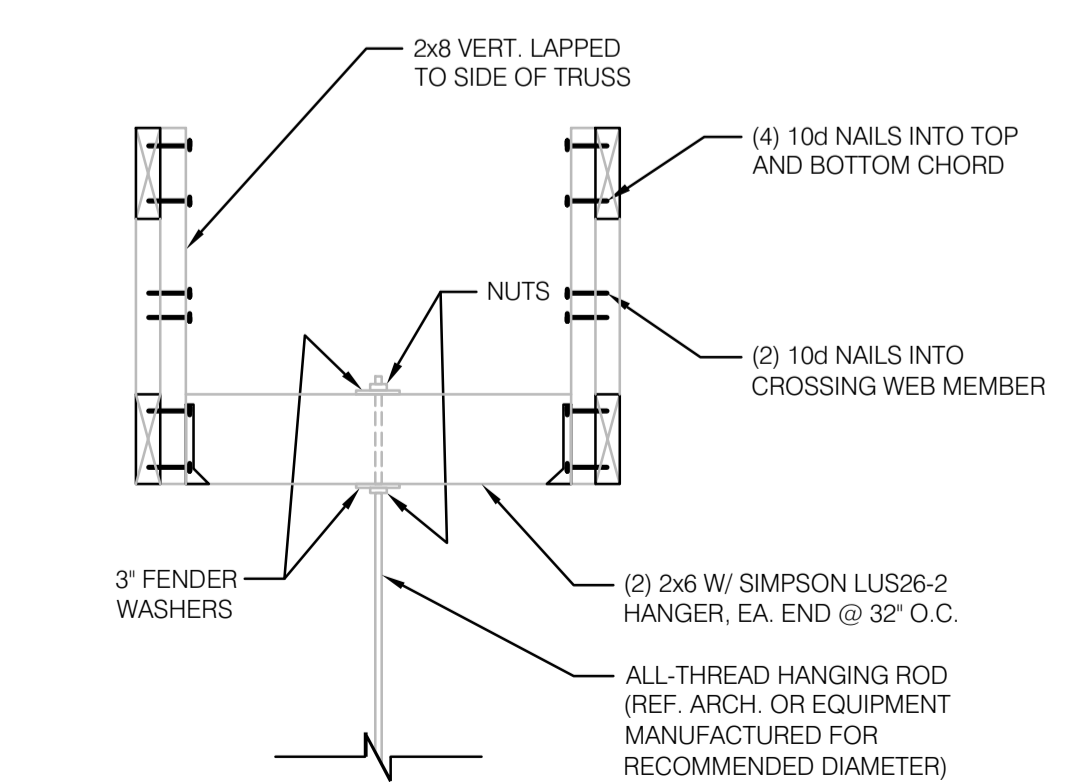
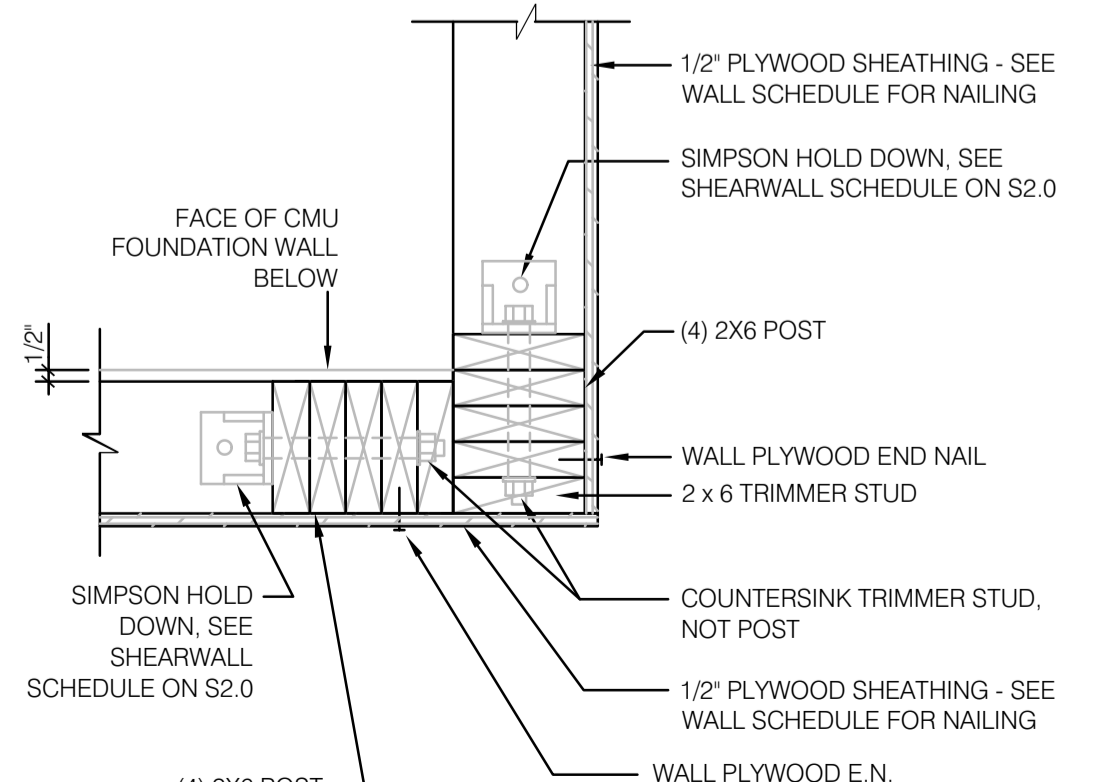


PLATE LAP DETAIL N.T.S. **11**

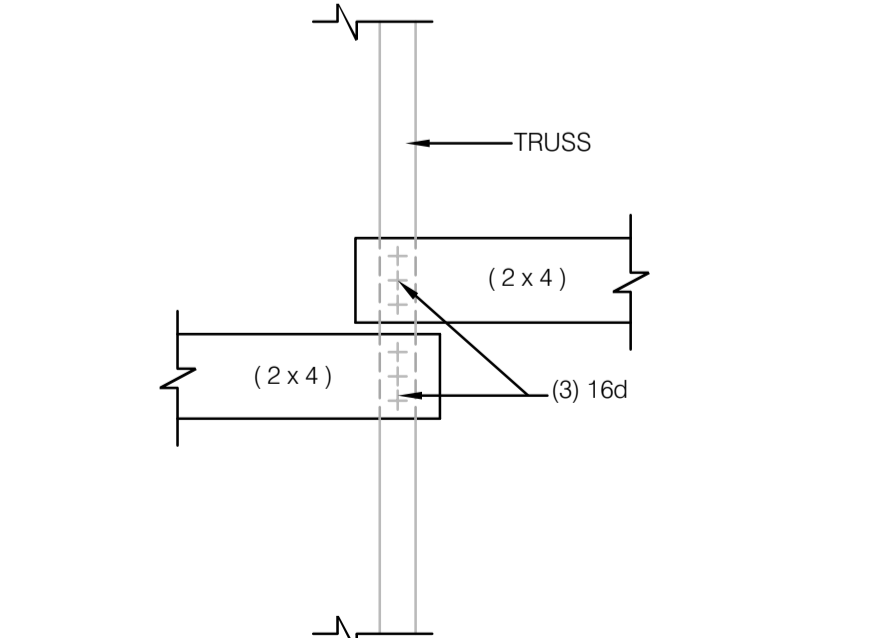
TYPICAL - ALL DOUBLE PLATE CONDITIONS - U.O.N.



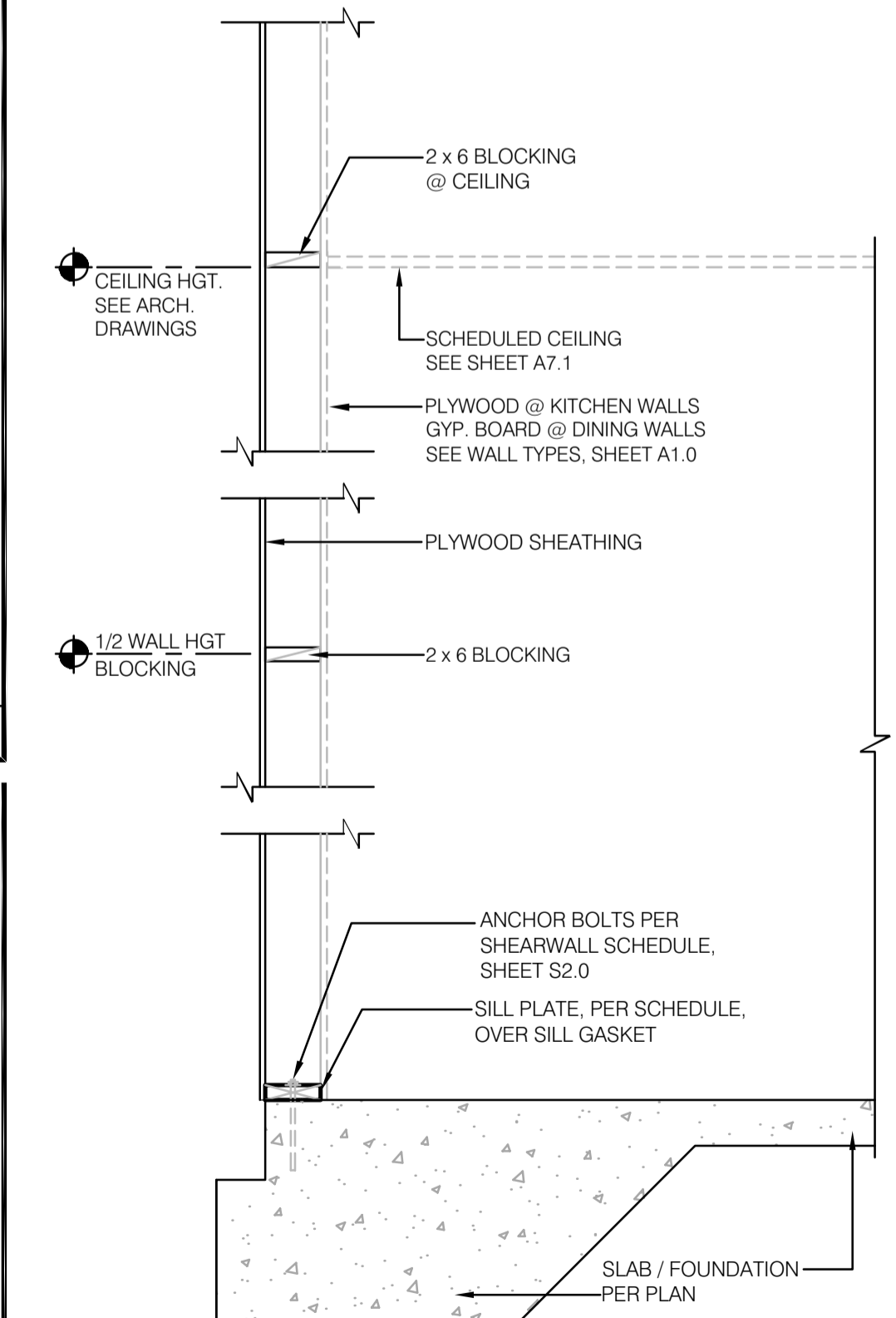
HANGING BULKHD. OR HOOD DETL. N.T.S. **20**



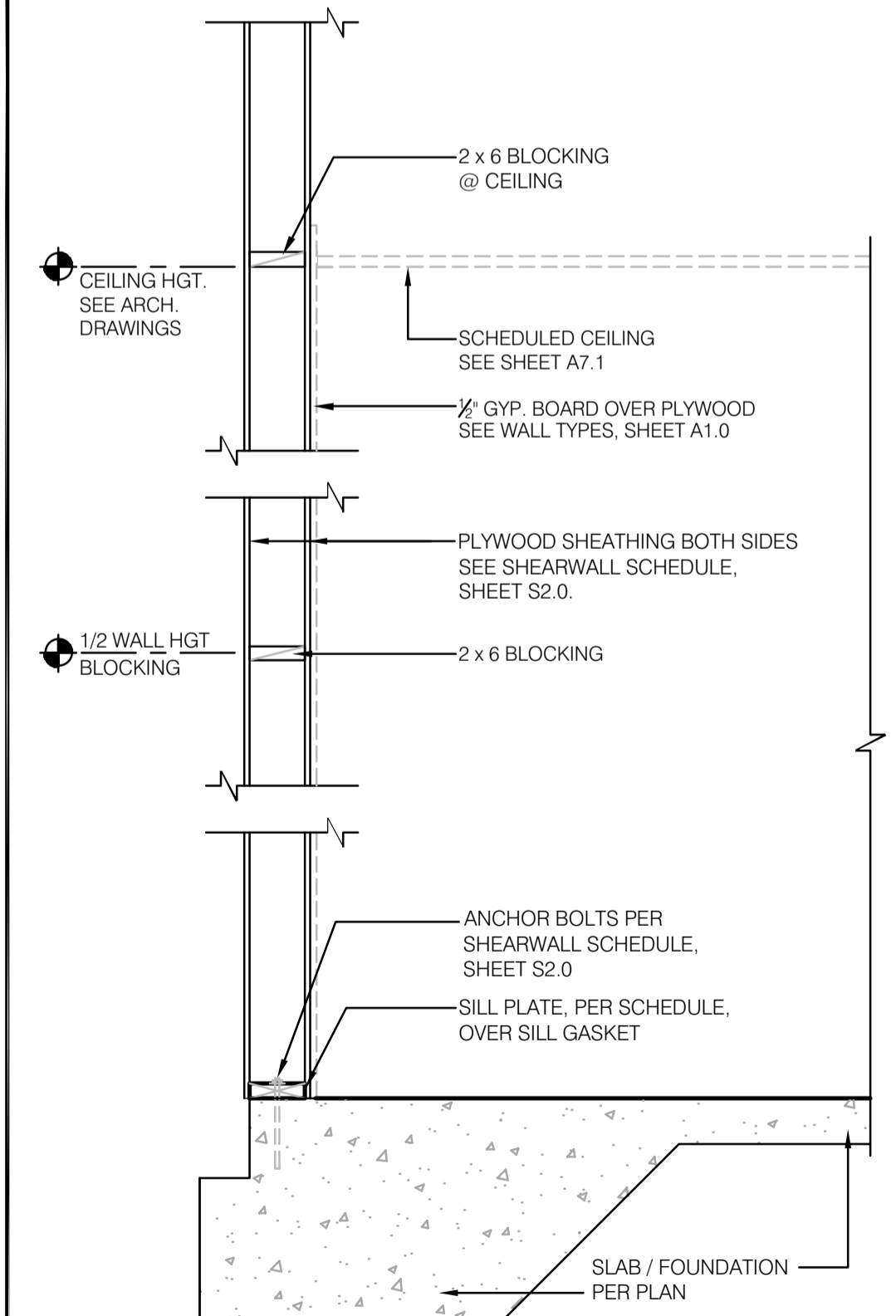
SW HOLD DOWN: CORNER (REAR) 1-1/2" = 1'-0" **16**



BRIDGING LAP DETAIL N.T.S. **12**



SIDE + REAR WALLS FRAMING 3/4" = 1'-0" **8**



FRONT WALL FRAMING 3/4" = 1'-0" **4**

ARCHITECTURE ENGINEERING
LIS
 LAND INVESTMENT SERVICES, LLC
 AA 2602040 CA NO. 6853 LB1057
 ARCHITECTURE / ENGINEERING OFFICE
 2577 W. US HWY 90
 Suite 2064, Ocala, FL 32765
 Phone: (352) 244-0402
 facsimile: (352) 244-9419
 ENGINEERING OFFICE
 21430 Palm Beach Blvd.
 Alva, Fla. 33920
 Phone: (239) 693-9244
 facsimile: (239) 693-9828

Digitally signed by ROBERT W CASE
 Date: 2022.03.31 10:45:05 -04'00'
 ROBERT WAYNE CASE
 FLORIDA PE #44643

PLAN SET REVISIONS:

CONTRACT DATE: ...-2019
 BUILDING TYPE: Kb 30-19
 PLAN VERSION: 2018.A
 SITE NUMBER:
 ENTITY NUMBER:
 STORE NUMBER:
 LIS PROJECT: 2019-304

KFC
 3615 W SILVER SPRINGS BLVD.
 Ocala, FL

 Kb 30-19

STRUCTURAL DETAILS (FRAMING)

S5.1

PLOT DATE: 03/29/2022