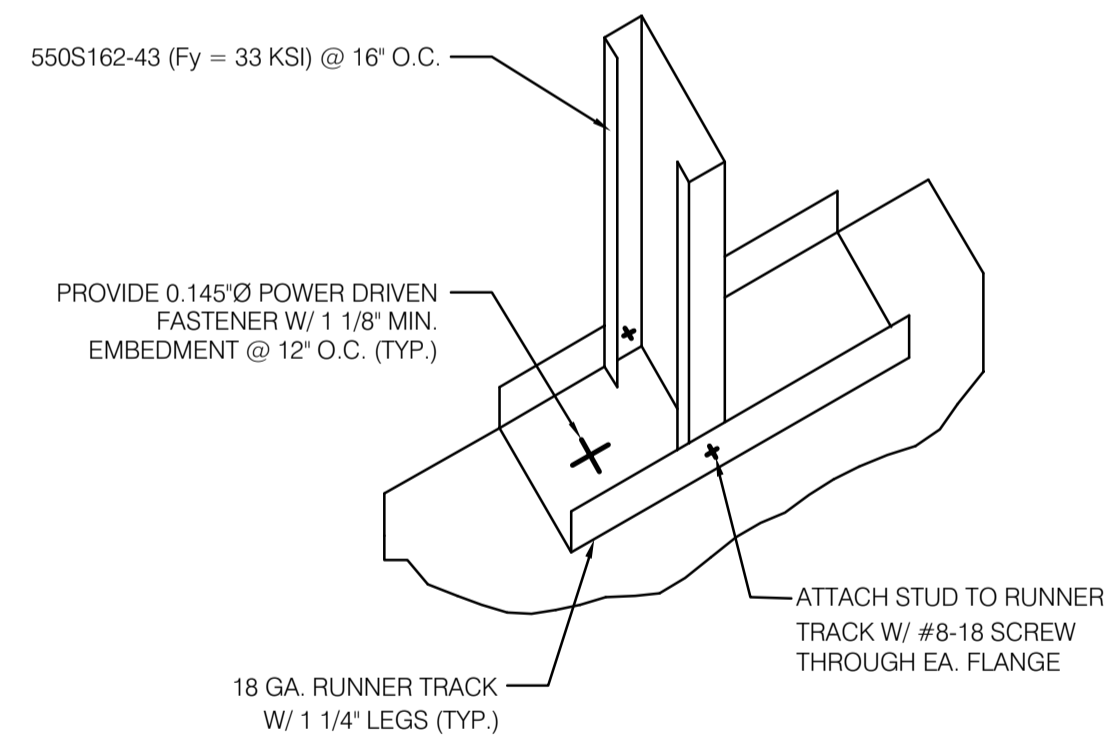
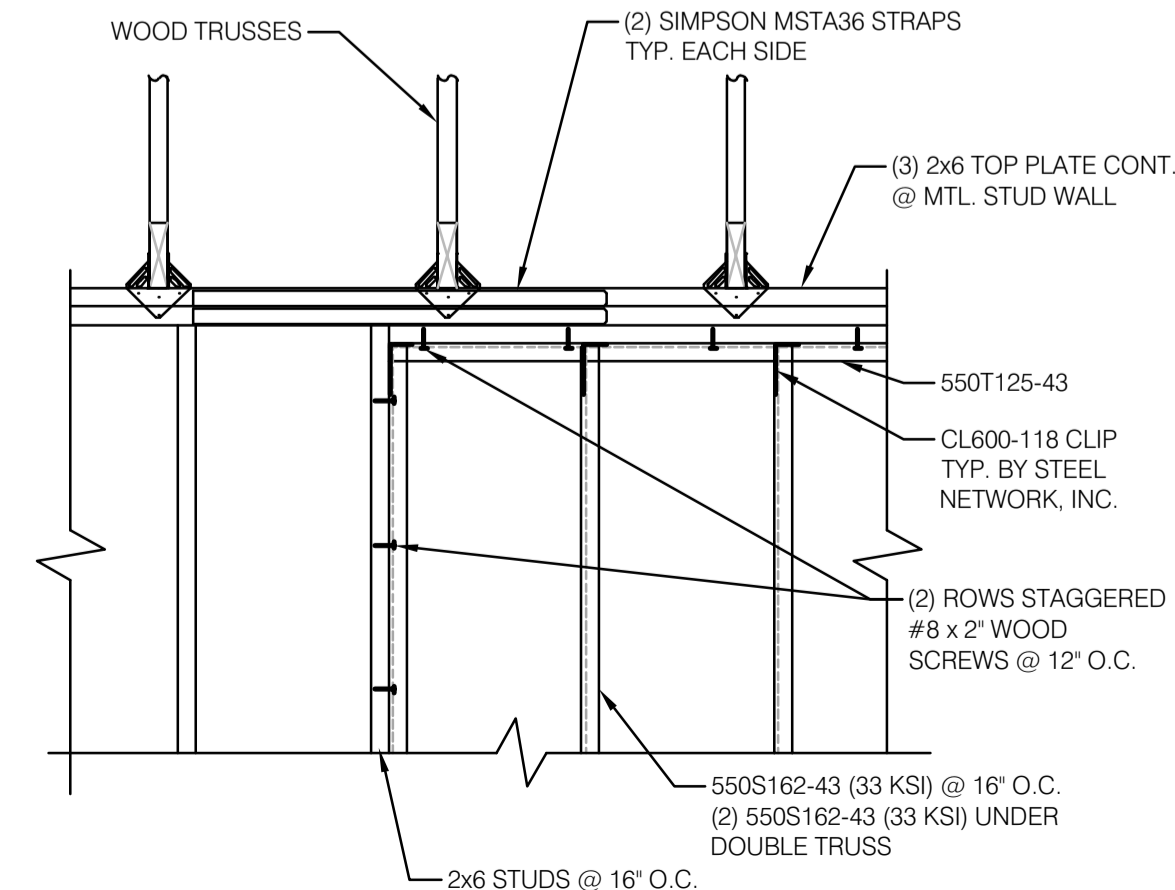


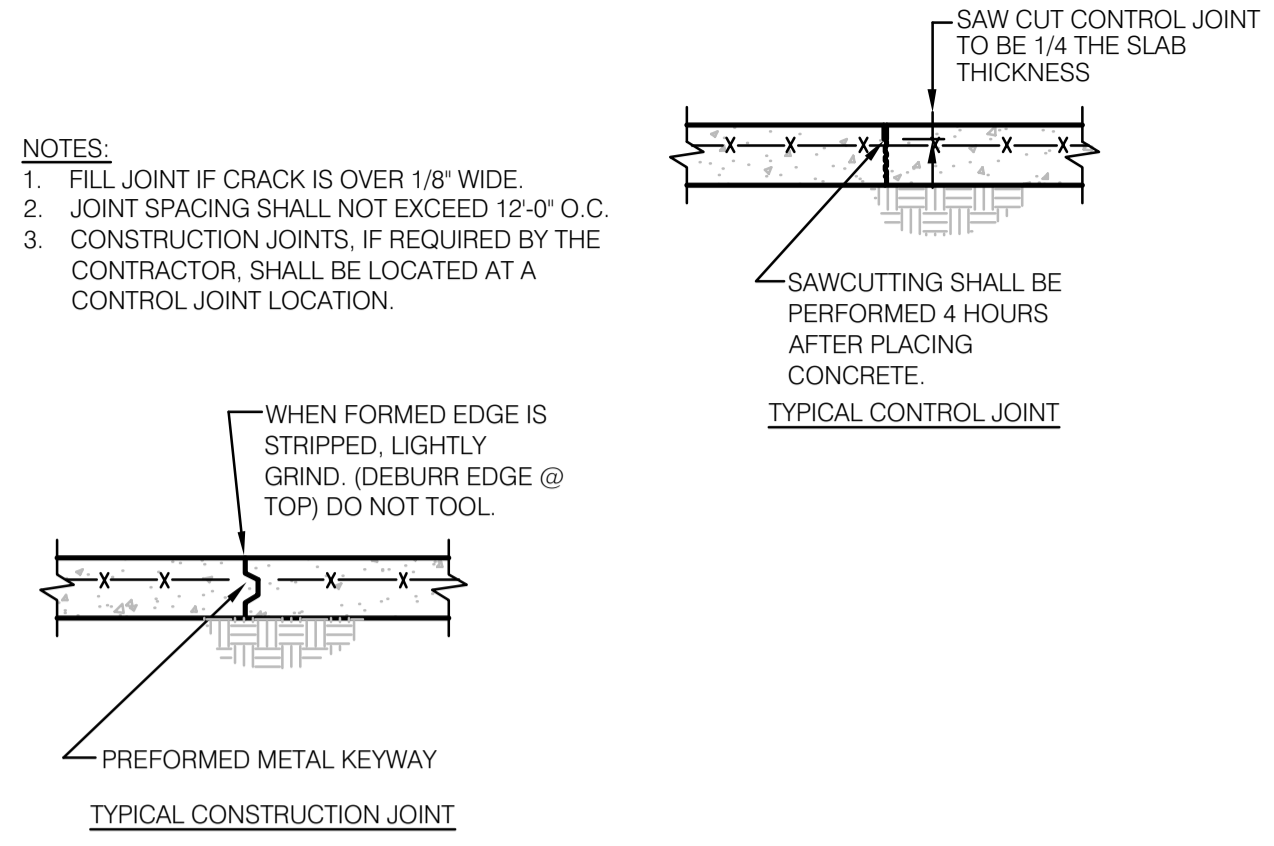
CORNER & INTERSECTING REINF. N.T.S. **14**



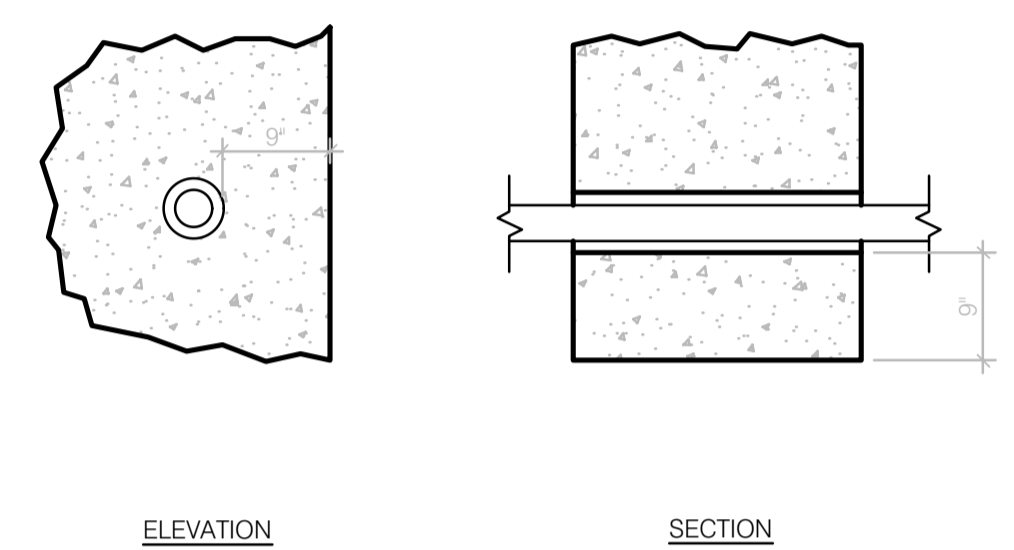
METAL STUD WALL BASE N.T.S. **15**



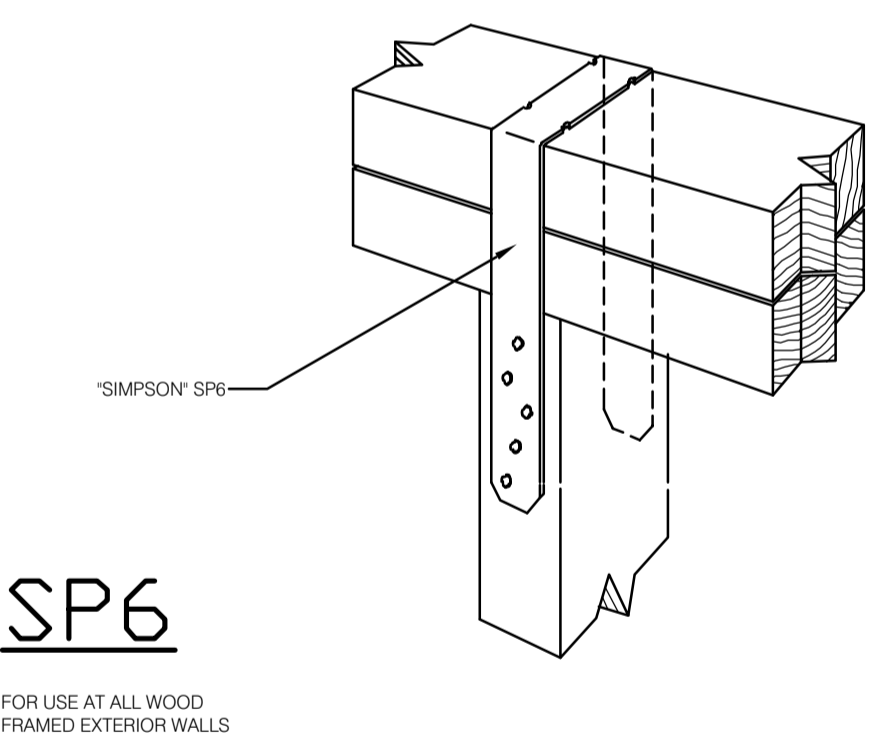
METAL STUD FRAMING N.T.S. **16**



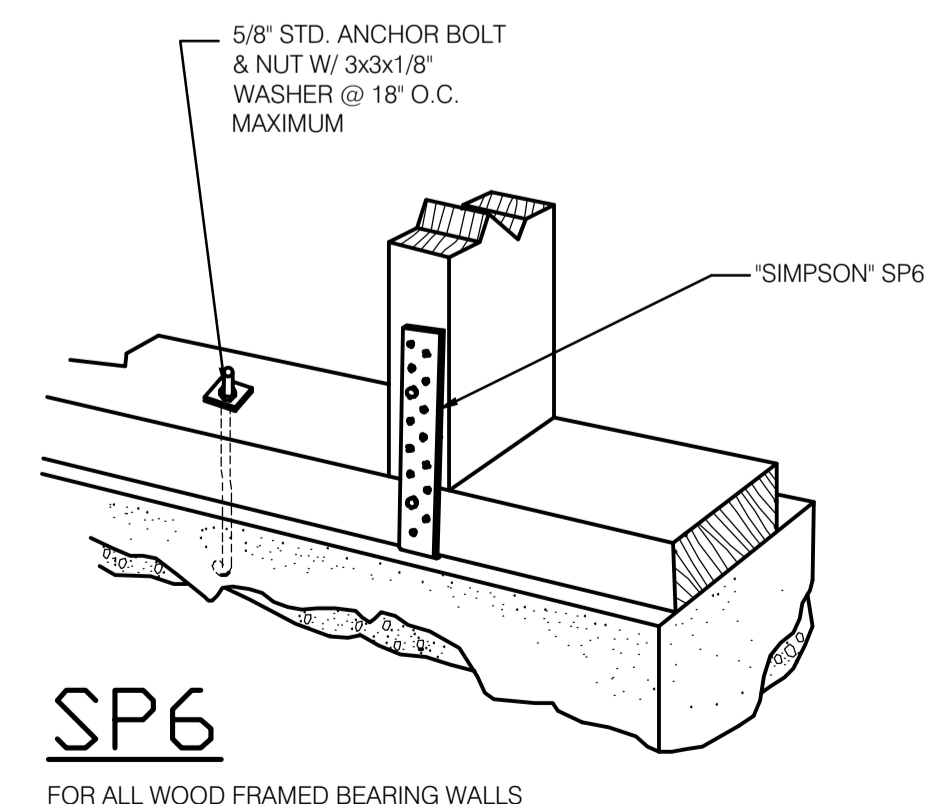
TYP. CONST. & CONTROL JOINT DETAILS N.T.S. **9**



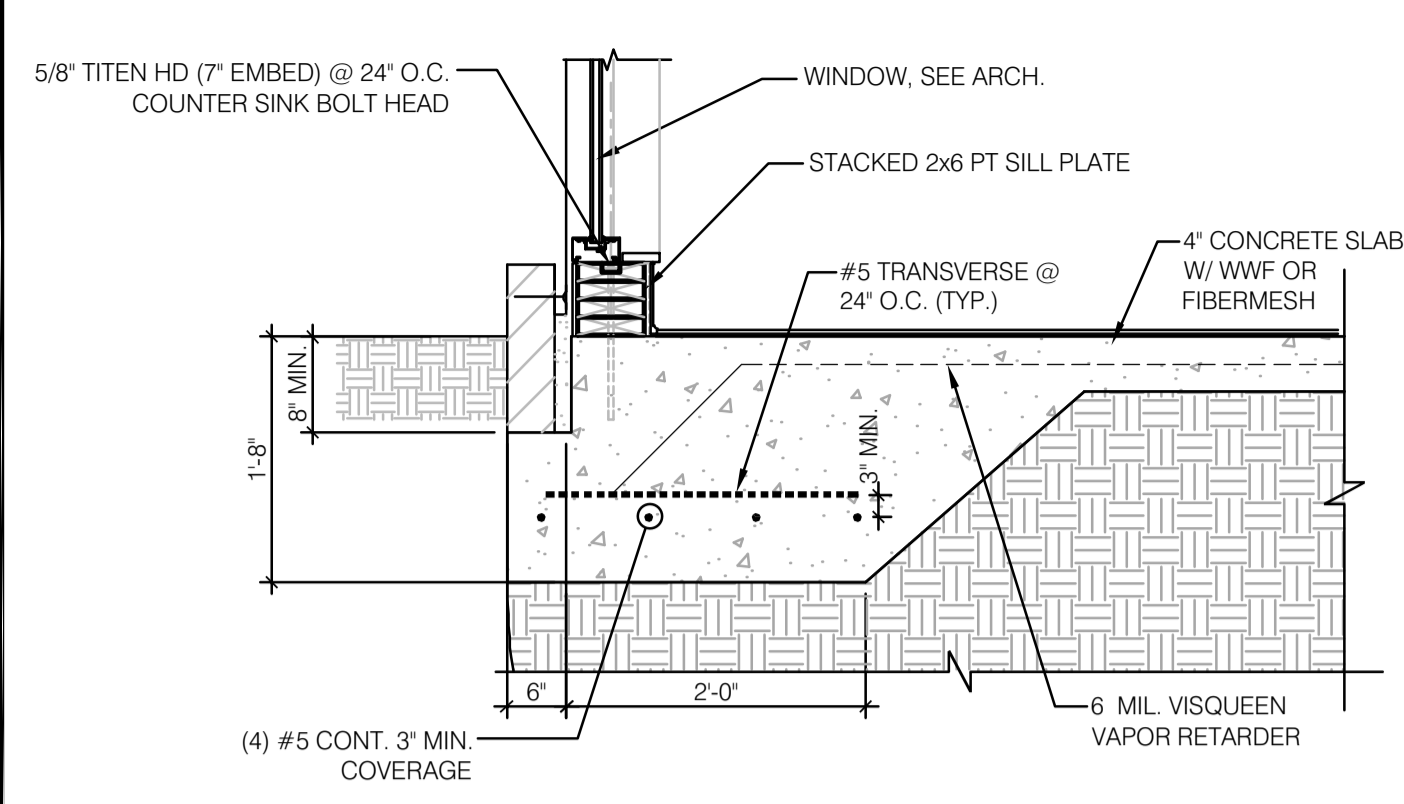
PIIPES THROUGH FOUNDATIONS N.T.S. **10**



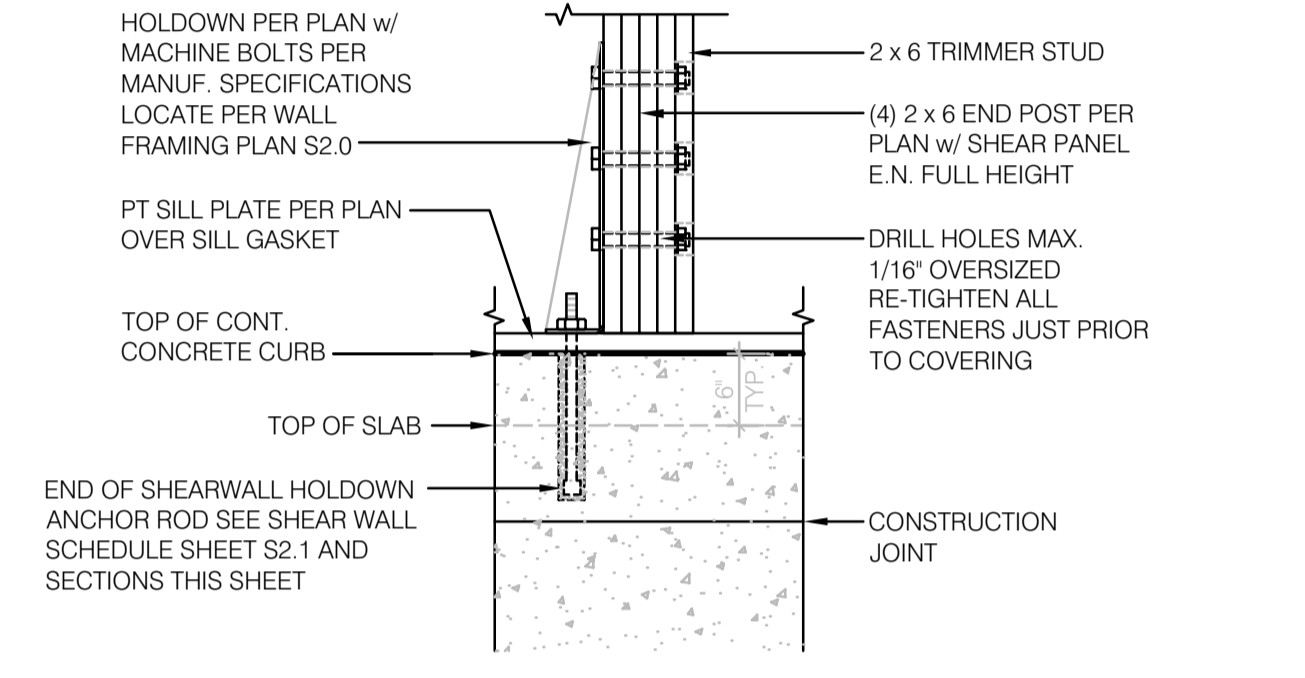
TOP PLATE CONNECTOR N.T.S. **11**



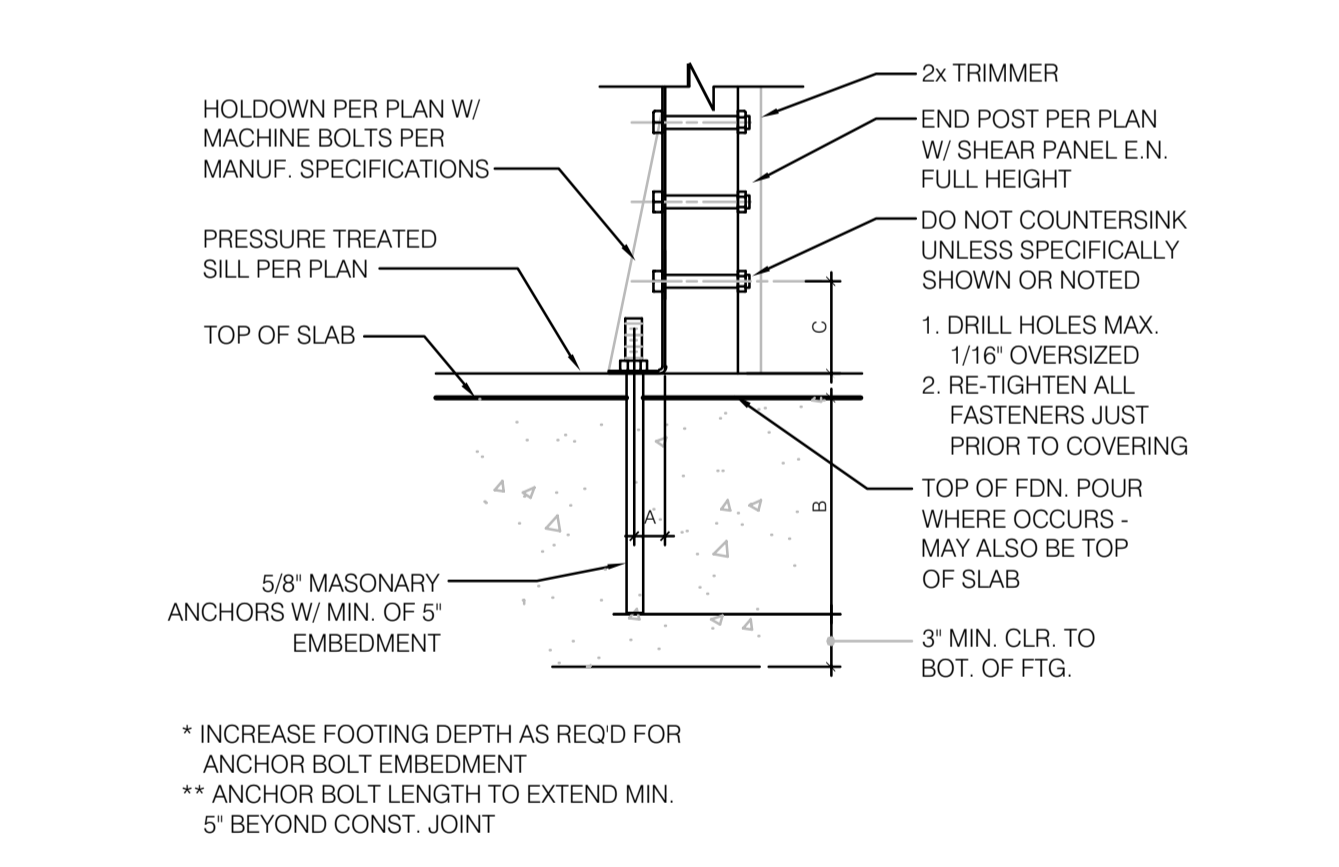
BOTTOM PLATE CONNECTOR N.T.S. **12**



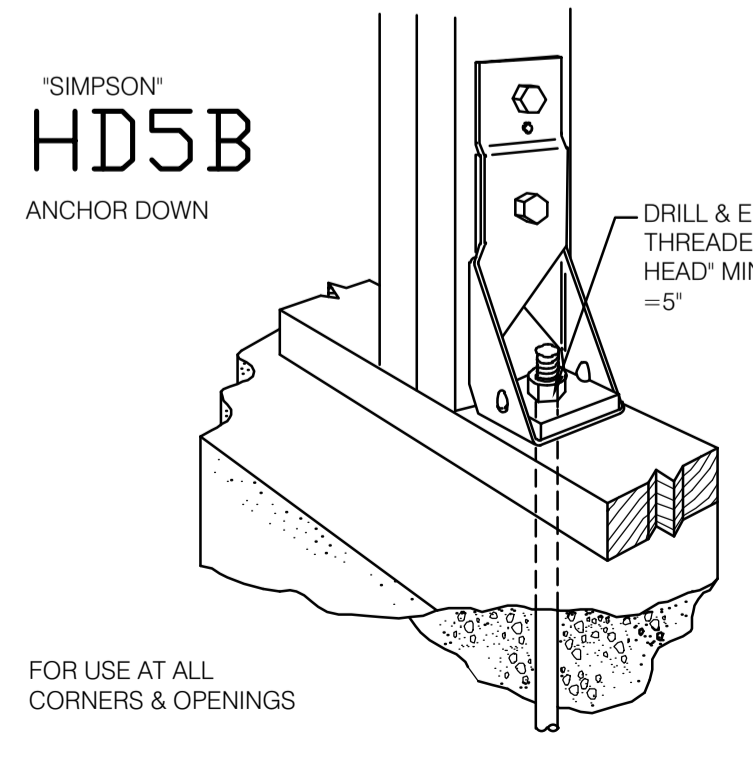
NEW FOOTING @ LOW WINDOW 3/4" = 1'-0" **5**



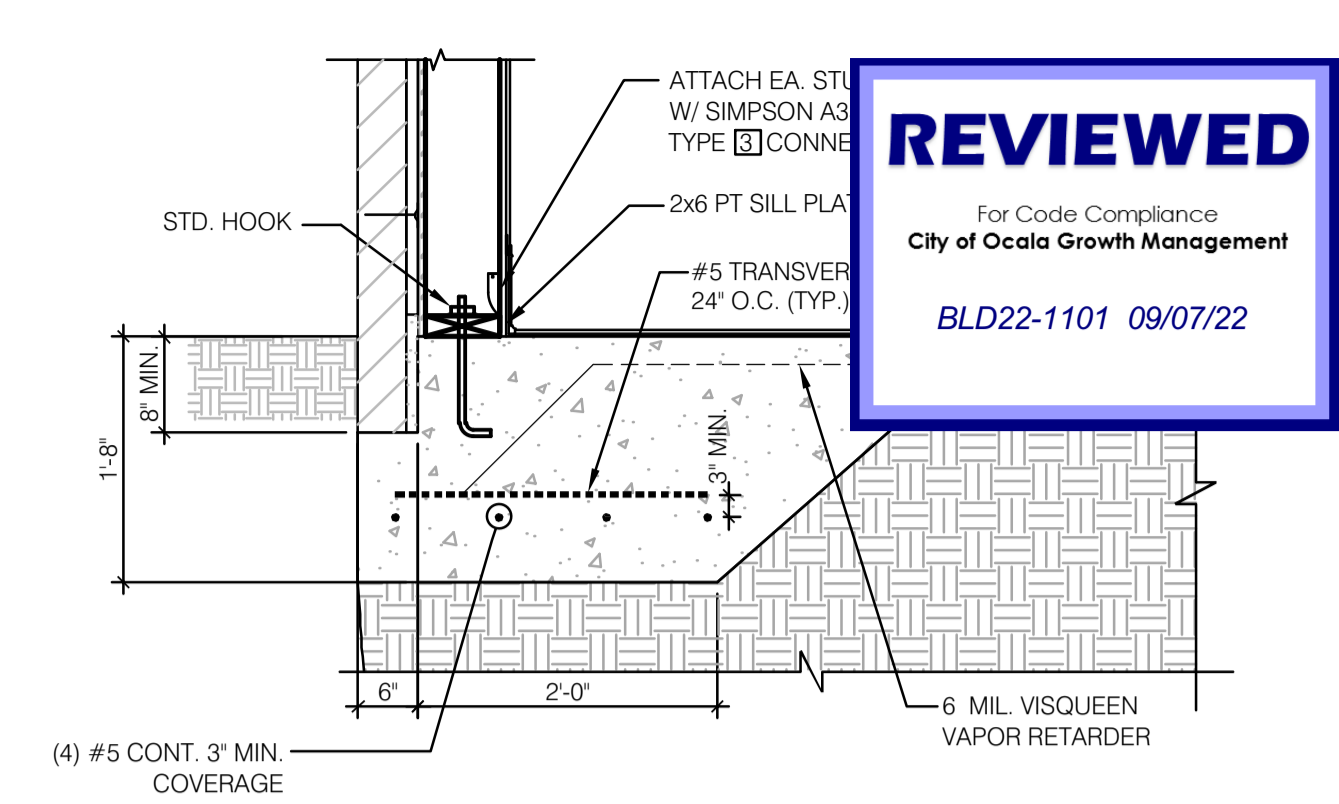
SHEARWALL HOLDDOWN 3/4" = 1'-0" **6**



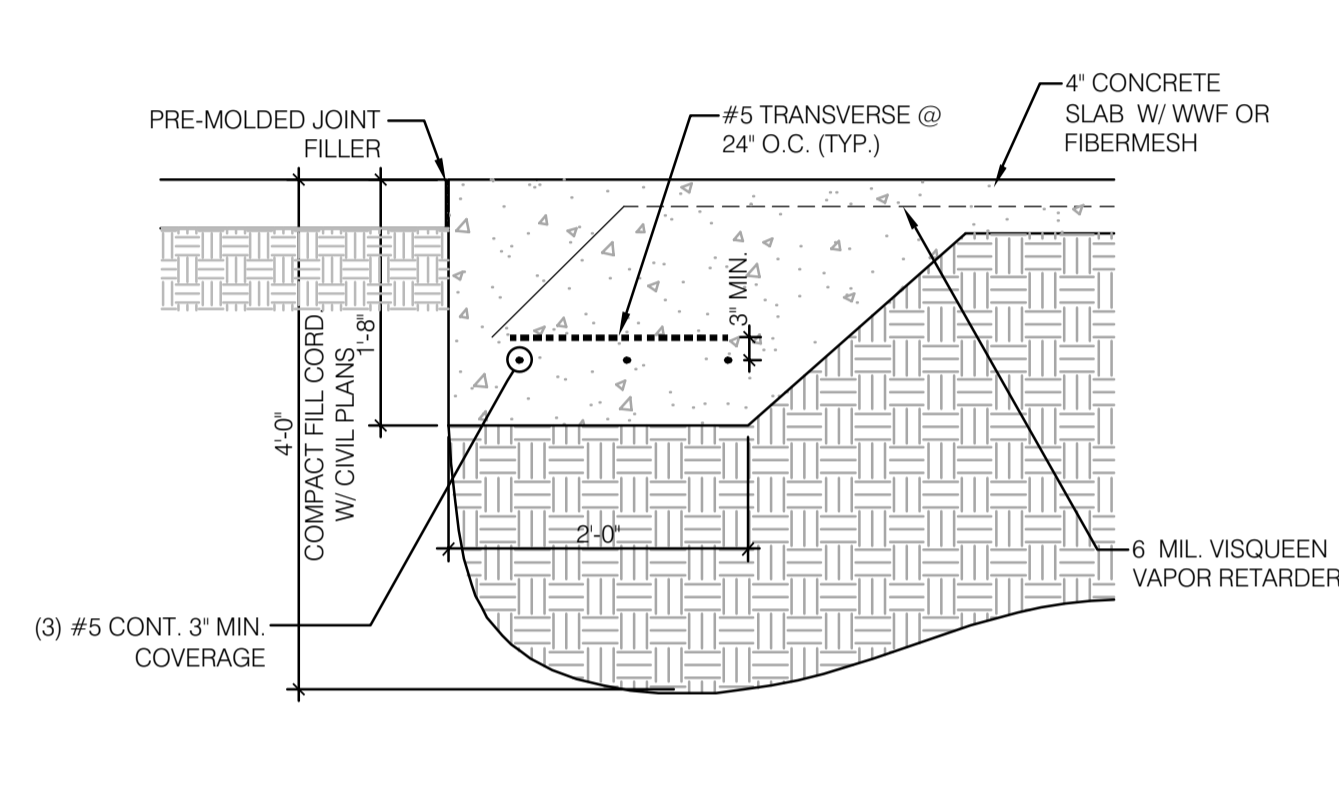
ANCHOR BOLT SCHEDULE N.T.S. **7**



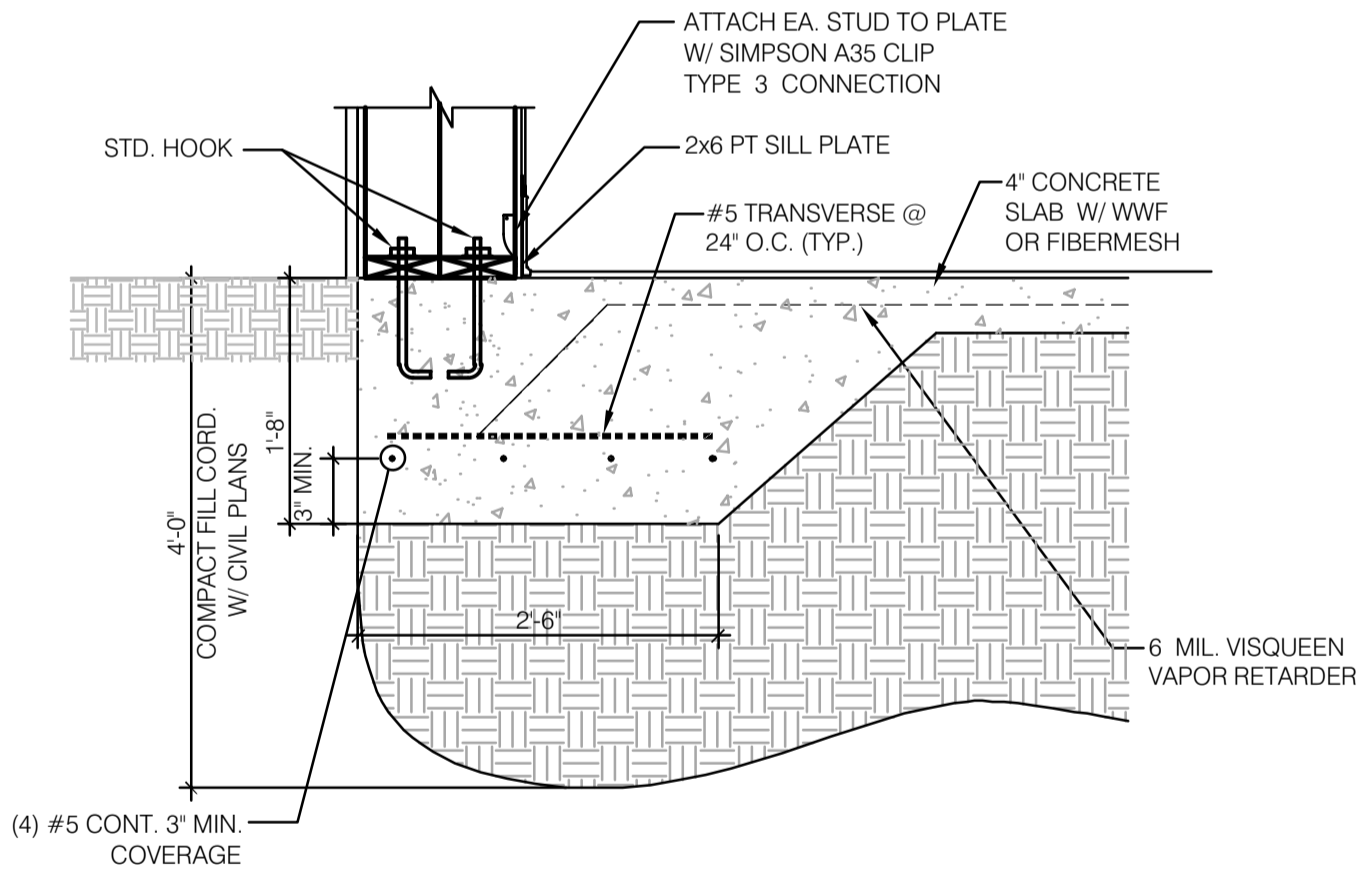
ANCHOR DOWN N.T.S. **8**



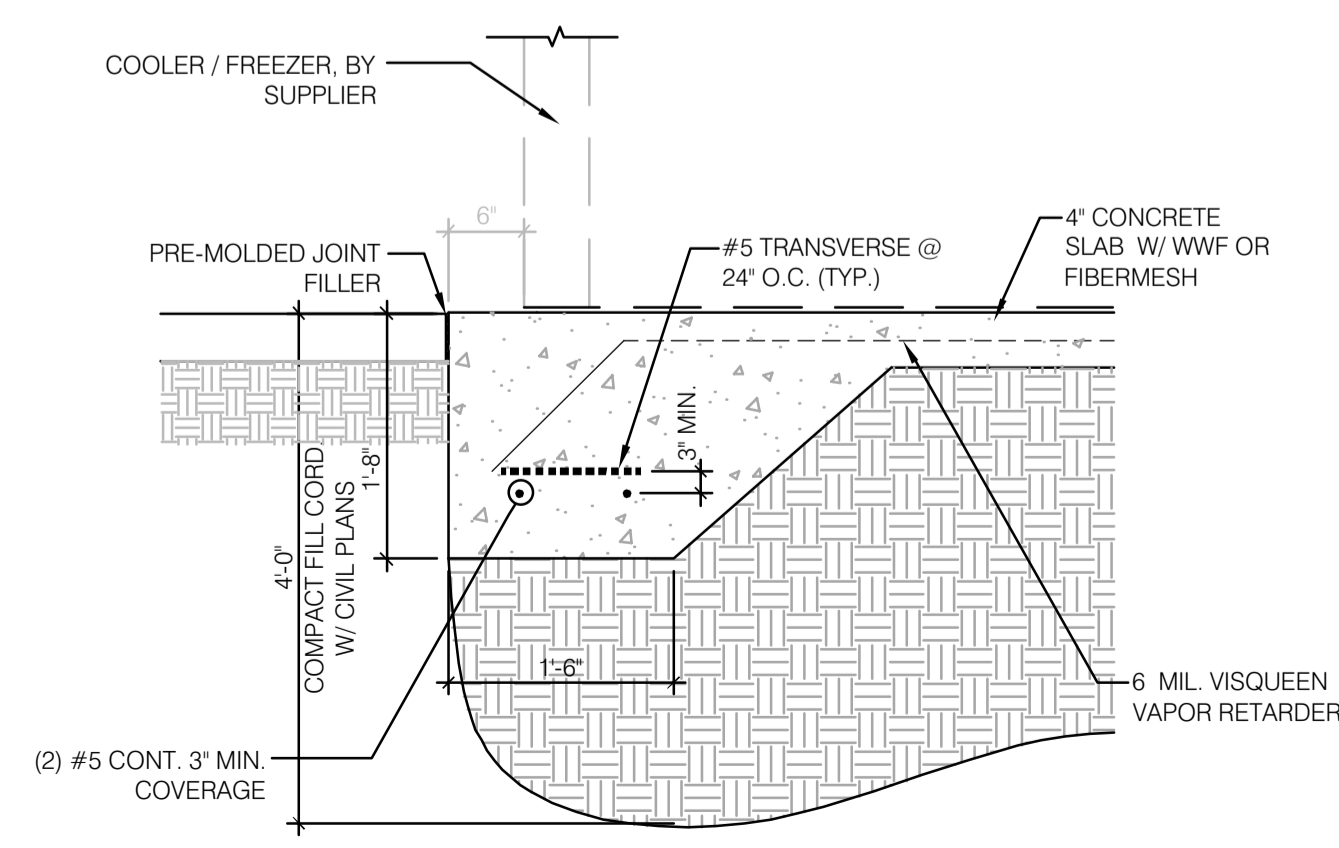
NEW FOOTING 3/4" = 1'-0" **1**



NEW FOOTING @ DOOR 3/4" = 1'-0" **2**



NEW FOOTING @ FRONT WALL SIGN 3/4" = 1'-0" **3**



FOOTING @ COOLER / FREEZER 3/4" = 1'-0" **4**

REVIEWED
For Code Compliance
City of Ocala Growth Management
BLD22-1101 09/07/22

ARCHITECTURE
ENGINEERING
LIS
ENGINEERING OFFICE
21430 Palm Beach Blvd.
Alva, Fla. 33920
Phone: (239) 693-9244
facsimile: (239) 693-9828
LAND INVESTMENT SERVICES, LLC
AA 26002040 CA NO: 6853 LB1057
ARCHITECTURE / ENGINEERING OFFICE
2577 West State Road 438
Suite 2064, Ocala, FL 32765
Phone: (321) 244-0402
facsimile: (321) 244-9419

Digitally signed by
ROBERT W CASE
Date:
2022.03.31
10:44:40
-04'00'

ROBERT WAYNE CASE
FLORIDA PE #44643
PLAN SET REVISIONS:
CONTRACT DATE: ...-2019
BUILDING TYPE: Kb 30-19
PLAN VERSION: 2018.A
SITE NUMBER:
ENTITY NUMBER:
STORE NUMBER:
LIS PROJECT: 2019-304

KFC
3615 W SILVER SPRINGS BLVD.
OCALA, FL
Kb 30-19
STRUCTURAL DETAILS (FOUNDATION)
S5.0
PLOT DATE: 03/29/2022