

**SUPPLY WATER LINE LEGEND:**

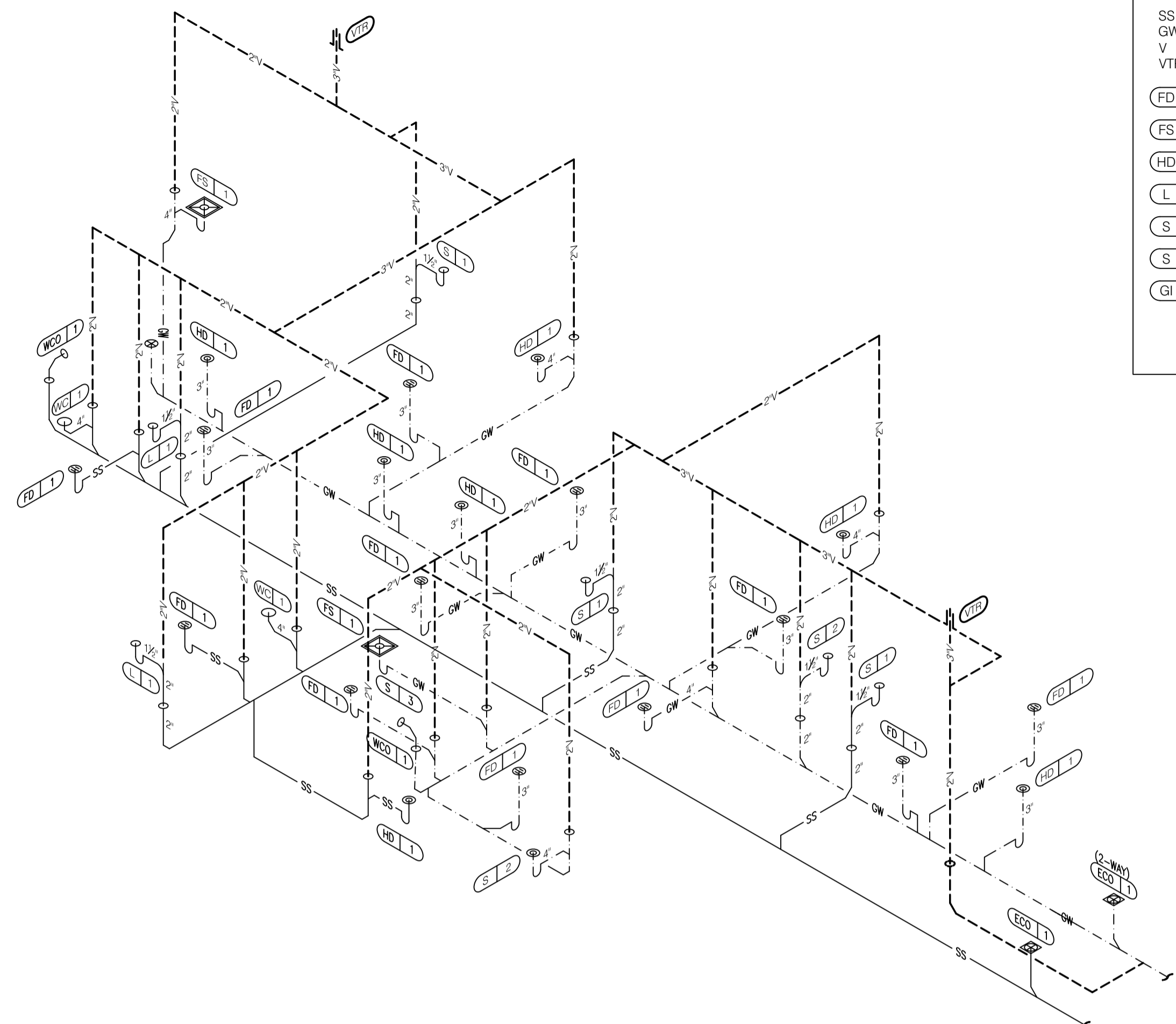
CW	COLD WATER	---
HW	HOT WATER	---
TW	TEMPERED WATER	---

HB 1	HOSE BIBB:	3/4" CW
HB 2	HOSE BIBB:	3/4" CW
L 1	LAVATORY:	1/2" TW
S 1	HAND SINK:	1/2" TW
S 2	MOP SINK:	1/2" CW ; 1/2" HW
S 3	3-COMP SINK:	1/2" CW ; 1/2" HW
WC 1	WATER CLOSET:	1/2" CW
S-287	WATER FILTER:	3/4" CW
S-288	WATER FILTER:	3/4" CW

SEE PLUMBING SCHEDULE A / P1.0.

**HOT / COLD / TEMPERED WATER ISOMETRIC** N.T.S. **4**



**WASTE / VENT LINE LEGEND:**

SS	SANITARY	---
GW	GREASE	---
V	VENT	---
VTR	VENT THRU	---

FD 1		
FS 1		
HD 1		
L 1		
S 1	HAND SINK:	2" WASTE
S 2	MOP SINK:	3" WASTE
GI 1	GREASE INTERCEPTOR:	6" WASTE

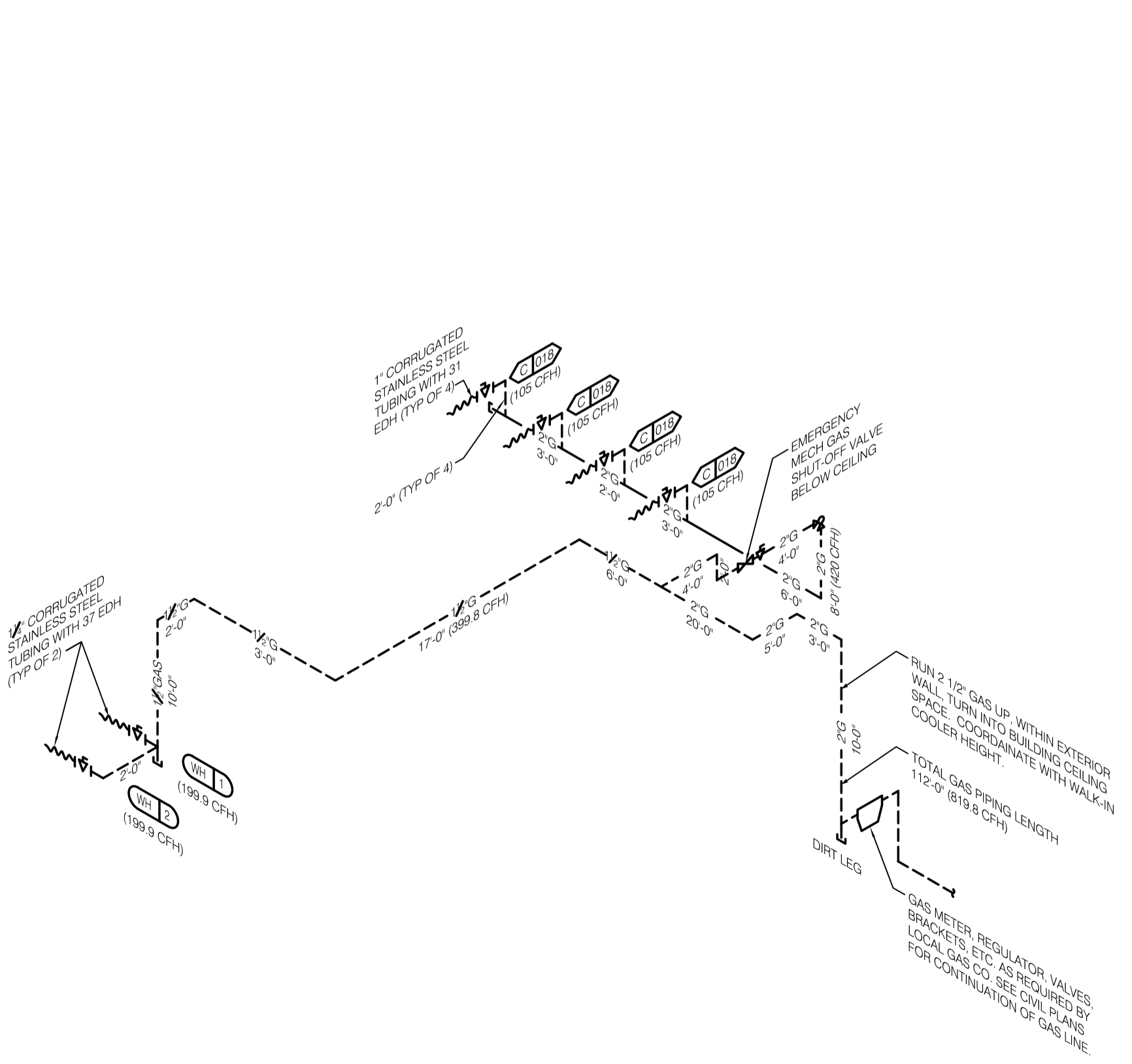
SEE PLUMBING SCHEDULE A / P1.0.

**REVIEWED**

For Code Compliance  
**City of Ocala Growth Management**

**BLD22-1101 09/07/22**

**WASTE / VENT ISOMETRIC** N.T.S. **1**



**GAS DEMAND SCHEDULE**

WH-1	199.9 CFH	
WH-2	199.9 CFH	
C-018	PRESSURE FRYER	105 CFH
C-018	PRESSURE FRYER	105 CFH
C-018	DUAL OPEN FRYER	210 CFH

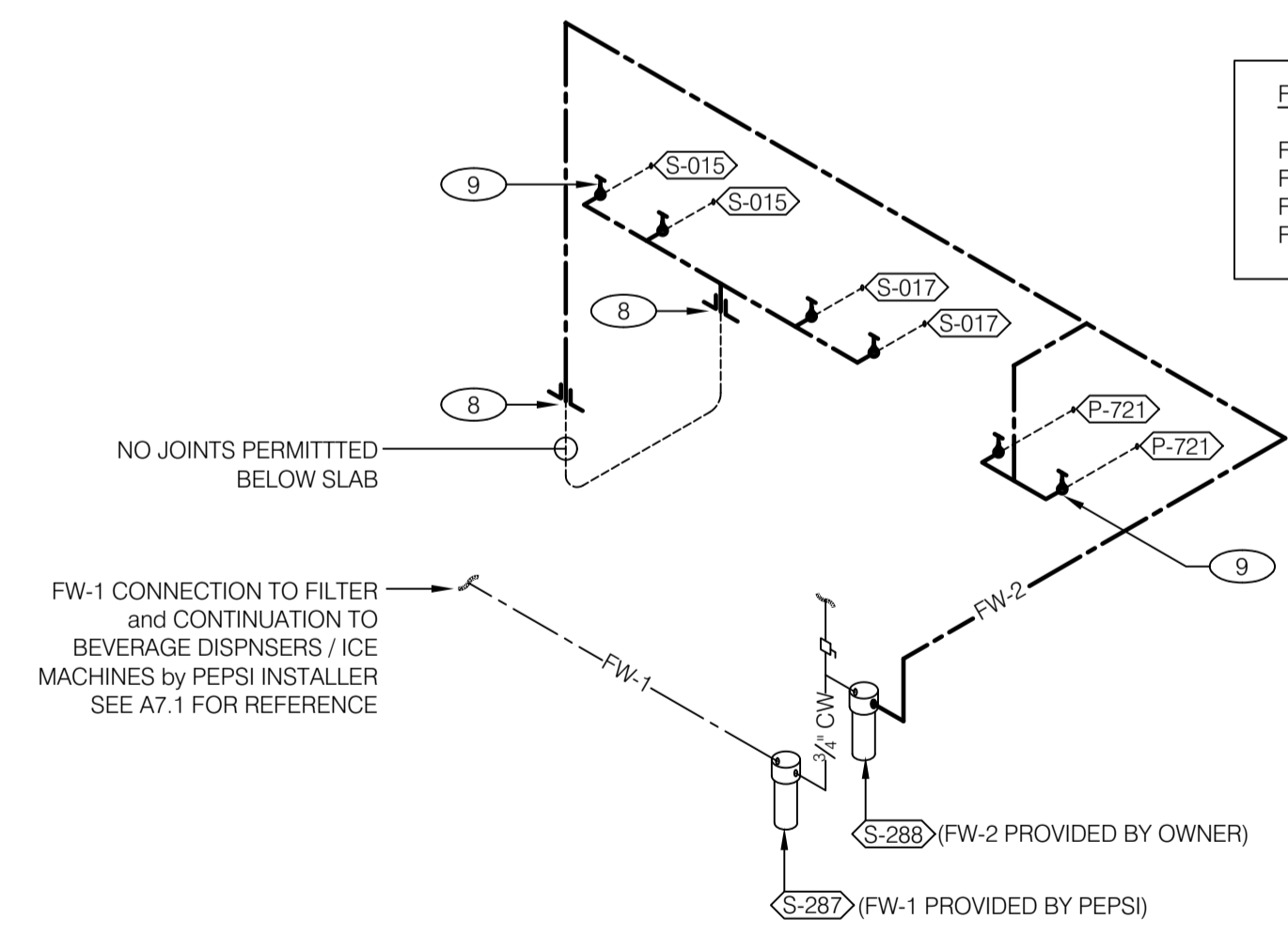
TOTAL DEMAND 819.8 CFH = 819,800 BTUH

PIPE SIZE BASED ON 125' EQUIVALENT LENGTH OF PIPE AND 7" W.C., 0.50 W.C. PRESSURE DROP, PER 2020 FBC-FUEL GAS, SEVENTH EDITION, TABLE 402.4(2).

**GAS PIPING:** FOR ABOVE GROUND INSTALLATIONS, ALL FITTINGS TO BE JOINED WITH TEFLON TAPE SEAL OR OTHER SUITABLE SEAL AND MADE IN CONFORMANCE WITH THE BEST PRACTICES OF AGA AND NFPA 54. UNIONS SHALL BE CAST BLACK IRON AND INSTALLED IN A MANNER SUCH THAT NO STRESS WILL BE PLACED ON THE MALE-FEMALE SEALING SURFACES. PROPER ALIGNMENT WILL BE MADE AT TIME OF INSTALLATION. ALL JOINTS AND CONNECTIONS SHALL BE THOROUGHLY CLEANED OF OIL, THREAD CUTTINGS AND RESIDUALS TO ACCEPT ENAMEL PAINT. ROUGH OR SHARP EXPOSED THREAD SURFACES SHALL BE FILED SMOOTH. TESTING SHALL BE AS OUTLINED UNDER SECTION 15A, PARAGRAPH II, TESTS.

- A. MATERIALS: BLACK CARBON STEEL, SCH. 40 WITH MALLEABLE IRON THREADED FITTINGS.
- B. PAINTING: PAINT ALL GAS PIPING EXPOSED TO WEATHER WITH ONE COAT OF PRIMER, AND TWO COATS OF RUST-PROOF PAINT. COLOR SHALL MATCH BUILDING COLORS. COORDINATE WITH G.C.

**GAS ISOMETRIC** N.T.S. **5**



**FILTERED WATER LINE LEGEND:**

FW-1	1/2"	---
FW-2	1/2"	---
FW-2	1/2"	BELOW SLAB
FW-2	1/2"	TO EQUIPMENT

**FW-1 FILTERED EQUIPMENT:**

- S-287 - WATER FILTER

**FW-1 FILTERED LINE (COLD WATER):**

- S-512 - ICE CUBER - ABOVE SELF-SERVE BEVERAGE DISPENSER \*
- S-512 - ICE CUBER - ABOVE DRIVE-THRU BEVERAGE DISPENSER \*
- S-532 - DRIVE-THRU BEVERAGE DISPENSER \*
- S-532 - SELF-SERVE BEVERAGE DISPENSER \*

\* FILTERED WATER SUPPLIED VIA SYRUP BUNDLE. SEE SCOPE OF WORK FOR RESPONSIBILITIES.

**FW-2 FILTERED EQUIPMENT:**

- S-288 - WATER FILTER

**FW-2 FILTERED LINE (COLD WATER / HARD PIPING):**

- S-015 - 1/2" HEIGHT HEATED CABINETS (Qty. 2)
- S-017 - FULL HEIGHT HEATED CABINET (Qty. 2)
- P-721 - BUNN HOT WATER DISPENSER (Qty. 2)

**FILTERED WATER ISOMETRIC** N.T.S. **2**

- |  |  |
|--|--|
| <ul style="list-style-type: none"> <li>1 ENTIRE RUN OF DRAIN LINES ON INLET TO GREASE TRAP SHALL BE SCHEDULE 40 PVC OR AS REQUIRED BY CODE.</li> <li>2 1/2" TEMPERED WATER DOWN IN WALL TO HAND SINK / LAVATORY.</li> <li>3 1/2" HOT AND COLD WATER LINES DOWN IN WALL TO PREP SINK.</li> <li>4 THERMOSTATIC MIXING VALVE.</li> <li>5 REDUCED PRESSURE BACKFLOW PREVENTER PER LOCAL UTILITY REQUIREMENTS. PROVIDE SHUT-OFF VALVES AT BOTH SIDES OF BACKFLOW PREVENTER. VERIFY LOCATIONS WITH CIVIL DRAWINGS.</li> <li>6 EMERGENCY GAS SHUT-OFF VALVE SHALL BE A MECHANICALLY OPERATED WALL ACTIVATED BY THE EXHAUST HOOD FIRE SUPPRESSION SYSTEM IN ACCORDANCE WITH IBC AND NFPA. LOCATE SHUT-OFF BELOW FINISH CEILING.</li> <li>7 FACTORY GAS PIPING AT ROOF TOP UNIT FOR THROUGH THE BASE PIPE CONNECTION. SHUT-OFF VALVE SHALL BE LOCATED OUTSIDE OF THE UNIT.</li> <li>8 1/2" FILTERED WATER, CONTINUE BELOW SLAB, ROUTE UP THROUGH FLOOR CAP PIPE 1" A.F.F. FOR CONNECTION TO HEATED CABINETS &lt;S-015&gt; / &lt;S-017&gt;.</li> </ul> | <ul style="list-style-type: none"> <li>9 1/2" FILTERED WATER; TERMINATE WITH BALL VALVE / TRANSITION TO 1/2" LINE FOR CONNECTION TO EQUIPMENT.</li> <li>10 GAS SHUT-OFF VALVE IN CEILING SPACE BY G.C.</li> <li>11 PIPE T&amp;P RELIEF VALVE TO OUTSIDE OF BUILDING OR TO HUB DRAIN. RUN FULL SIZE PIPE FROM VALVE WITH TYPE 'K' COPPER TUBING.</li> <li>12 PROVIDE TRAP PRIMERS AS REQUIRED PER CODE.</li> <li>13 IRRIGATION VALVE BOX. COORDINATE WITH ENLARGED PLAN 3 / E3.1 and COMMUNICATIONS PLAN E5.0.</li> <li>14 DIRT LEG.</li> <li>15 2" GAS MANIFOLD; WALL MOUNTED 12" A.F.F.</li> <li>16 PROVIDE 1" GAS LINE, CAPPED-OFF (FOR FUTURE TIE-IN).</li> <li>17 PROVIDE 1" GAS LINE FOR FUTURE / OPTIONAL SINGLE OPEN FRYER &lt;C-017&gt;; VERIFY WITH OWNER.</li> </ul> |
|--|--|

**KEYNOTES** **3**

**ARCHITECTURE ENGINEERING**

**LIS**

ENGINEERING OFFICE  
 21430 Palm Beach Blvd.  
 Suite 2064, Boca Raton, FL 33420  
 Phone: (335) 993-9244  
 facsimile: (239) 693-9828

LAND INVESTMENT SERVICES, LLC  
 AA 26002040 CA NO: 6853 LB1057

ARCHITECTURE / ENGINEERING OFFICE  
 26002040 CA NO: 6853 LB1057  
 Suite 2064, Boca Raton, FL 33420  
 Phone: (321) 244-0402  
 facsimile: (321) 244-9419

Digitally signed by  
**ROBERT W CASE**  
 Date:  
**2022.06.03 15:14:14 -04'00'**


ROBERT WAYNE CASE  
 FLORIDA PE #44643

**PLAN SET REVISIONS:**


CONTRACT DATE: ...-2019  
 BUILDING TYPE: Kb 30-19  
 PLAN VERSION: 2018.A  
 SITE NUMBER:  
 ENTITY NUMBER:  
 STORE NUMBER:  
 LIS PROJECT: 2019-304

**KFC**

3615 W SILVER SPRINGS BLVD.  
 OCALA, FL

  
 Kb 30-19

**RISER DIAGRAMS**

**P4.0**