

REVIEWED

For Code Compliance
City of Ocala Growth Management

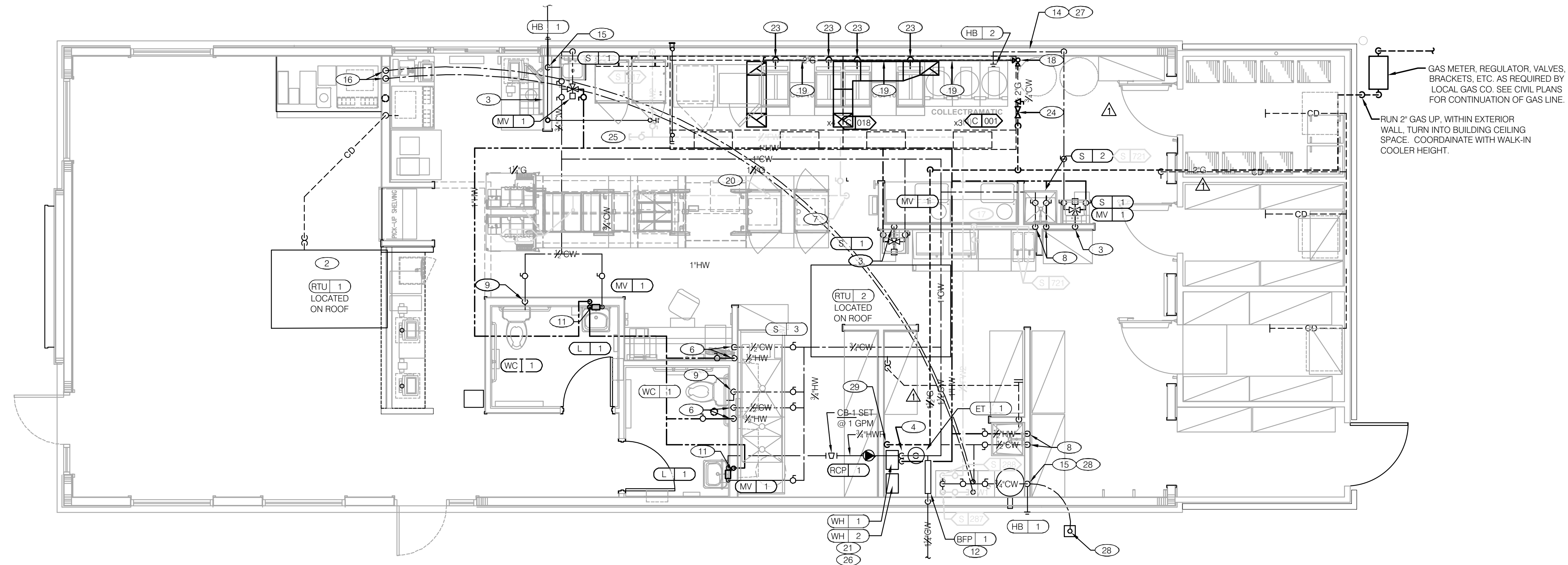
BLD22-1101 09/07/22

ENGINEERING OFFICE
21430 Palm Beach Blvd.
Avalon, Fla. 33920
Phone: (239) 693-9244
facsimile: (239) 693-9828

ARCHITECTURE
ENGINEERING

LIS
LAND INVESTMENT SERVICES, LLC
AA 26002040 CA NO: 6853 LB1057

ARCHITECTURE / ENGINEERING OFFICE
15000 E. Rock Road
Suite 2064, Ocala, FL 32765
Phone: (321) 244-0402
facsimile: (321) 244-9419



GAS METER, REGULATOR, VALVES, BRACKETS, ETC. AS REQUIRED BY LOCAL GAS CO. SEE CIVIL PLANS FOR CONTINUATION OF GAS LINE.

RUN 2" GAS UP, WITHIN EXTERIOR WALL, TURN INTO BUILDING CEILING SPACE. COORDINATE WITH WALK-IN COOLER HEIGHT.


Digitally signed by
ROBERT W CASE
Date:
2022.03.31 10:29:39 -04'00'

ROBERT WAYNE CASE
FLORIDA PE. #44643

PLAN SET REVISIONS:

CONTRACT DATE:	..-2019
BUILDING TYPE:	Kb 30-19
PLAN VERSION:	2018.A
SITE NUMBER:	
ENTITY NUMBER:	
STORE NUMBER:	
LIS PROJECT:	2019-304

KFC
3615 W SILVER SPRINGS BLVD.
OCALA, FL



Kb 30-19

WATER AND GAS PLAN

P3.0

PLOT DATE: 03/29/2022

WATER & GAS PLAN 1/4"=1'-0" A

- NOT USED** **E**
- WATER & GAS PLAN NOTES** **D**
- A. WATER DISTRIBUTION PIPING IS SHOWN ABOVE FINISH CEILING. UNDER SLAB DISTRIBUTION ALLOWED AT CONTRACTOR OPTION. COORDINATE ALL DETAILS.
 - B. NO ROOF PENETRATIONS PERMITTED WITHIN THE ROOF "WATER VALLEYS". REFER TO ROOF PLAN FOR LOCATIONS.
 - C. REFER TO SHT P4.0 FOR ROUGH-IN LOCATIONS.
 - D. REFER TO SHEET P5.0 FOR WATER AND GAS ISOMETRIC DRAWINGS.
 - E. REFER TO RISER DIAGRAM ON SHEET P5.0 FOR ALL WATER SUPPLY PIPING SIZES.
 - F. REFER TO RISER DIAGRAM ON SHEET P5.0 FOR ALL GAS PIPING SIZES.

- 1 NOT USED
- 2 NOT USED
- 3 1/2" TEMPERED WATER LINE DOWN IN WALL TO HAND SINK.
- 4 1" HOT AND COLD WATER LINES TO WATER HEATER.
- 5 1/2" HOT AND COLD WATER LINES IN DOWN WALL TO PREP SINK.
- 6 1/2" HOT AND COLD WATER LINES DOWN IN WALL TO THREE COMPARTMENT SINK.
- 7 1/2" FILTERED WATER LINE DOWN IN WALL TO BELOW SLAB. DO NOT INSTALL ANY JOINTS BELOW SLAB.
- 8 1/2" HOT AND COLD WATER LINES DOWN IN WALL TO THE MOP SINK.
- 9 1/2" COLD WATER LINE DOWN IN WALL TO WATER CLOSET FLUSHOMETER TANK.
- 10 REDUCED PRESSURE BACKFLOW PREVENTER LOCATED ABOVE THE CEILING IF ALLOWED BY LOCAL UTILITY. PROVIDE SHUT-OFF VALVES AT BOTH SIDES OF BACKFLOW PREVENTER. PIPE RELIEF TO HUB DRAIN. VERIFY LOCATIONS WITH CIVIL DWGS. VERIFY WATER SERVICE REQUIREMENTS WITH CITY.
- 11 1/2" TEMPERED WATER LINE DOWN IN WALL TO LAVATORY.
- 12 1/2" COLD WATER LINE DOWN IN WALL TO WATER FILTERS <S-287> AND <S-288>. SEE KEYNOTES 13 AND 16, THIS SHEET.
- 13 1/2" FILTERED WATER LINE FROM WATER FILTER <S-288> TO HOT HOLDING CABINETS <S-015> / <S-017> AND HOT WATER MACHINES <P-721>. SEE DRAWINGS A2.0, P5.0, AND P6.0. SEE KEYNOTES 7 AND 17, THIS SHEET.
- 14 1/2" COLD WATER LINE DOWN IN WALL TO INTERIOR HOSE BIBB. SEE KEYNOTE 27, THIS SHEET.
- 15 1/2" COLD WATER LINE DOWN IN WALL TO EXTERIOR HOSE BIBB.

- 16 BUNDLED SYRUP LINES FROM FILTER <S-287> TO BEVERAGE DISPENSERS <S-532> AND FILTERED WATER LINES TO ICE CUBERS <S-512>. SEE DRAWINGS A2.0, A7.1, P5.0 AND P6.0.
- 17 1/2" FILTERED WATER DOWN IN WALL TO BUNN HOT WATER MACHINES <P-721> (Qty. 2). BRANCH-OFF FOR EACH DISPENSER, STUB OUT OF WALL @ 6'-0" A.F.F. PROVIDE MANUAL CUT-OFF VALVE FOR EACH DISPENSER. SEE ELEVATION 7 / A8.2 FOR REFERENCE.
- 18 2" WALL-MOUNTED GAS PIPE DOWN WALL TO COOKING EQUIPMENT. COORDINATE LOCATION w/ WALK-IN COOLER BOX.
- 19 2" GAS MANIFOLD ALONG WALL TO COOKING EQUIPMENT. MOUNTING HEIGHT @ 12" A.F.F.
- 20 1/2" FILTER WATER STUB-UP FROM BELOW SLAB TO 1" A.F.F. FOR CONNECTION TO HEATED CABINETS <S-015> (Qty. 2) AND <S-017> (Qty. 2). SEE KEYNOTE 7, THIS SHEET.
- 21 3" PVC EXHAUST AND INTAKE FLUES FROM WATER HEATERS, PIPE INTAKE THRU ROOF AND EXHAUST THRU REAR WALL AS RECOMMENDED BY MANUFACTURER. SEE SHEET M2.0 AND DETAIL 2/P6.0.
- 22 1" GAS CONNECTION FOR FUTURE / OPTIONAL SINGLE OPEN FRYER; SEE SHEET P5.0. VERIFY WITH OWNER.
- 23 1" GAS CONNECTION TO EACH PRESSURE FRYER. PROVIDE FLEXIBLE HOSE KIT AS INDICATED ON ARCHITECTURAL DRAWING A2.1.
- 24 EMERGENCY GAS SHUT-OFF VALVE LOCATED BELOW CEILING.
- 25 OPTIONAL COFFEE AND TEA MAKERS; VERIFY WITH OWNER IF REQUIRED. PROVIDE 1/2" FILTER WATER TO EACH IF REQUIRED.
- 26 WATER HEATER (WH-1) AND (WH-2). PIPE CONDENSATE LINE, T&P DISCHARGE AND DRAIN PAN TO FLOOR SINK. SEE WATER HEATER DETAIL 2 / P6.0.
- 27 PROVIDE 3/4" HOSE BIB CONNECTION. ROUGH-IN @ 24" A.F.F.
- 28 1" COLD WATER LINE DOWN IN WALL TO EXTERIOR IRRIGATION VALVE BOX. COORDINATE WITH IRRIGATION TIMER (IR-01) LOCATED IN MANAGERS OFFICE; COORDINATE WITH ELECTRICAL.
- 29 1/2" GAS PIPE DOWN TO WATER HEATERS.
- 30 NOTE NOT USED.
- 31 PROVIDE 1/2" COLD WATER SUPPLY STUB UP AND SHUT OFF VALVE FOR FUTURE CONNECTION TO ROOF TOP HOSE BIBB.

KEY NOTES **B**