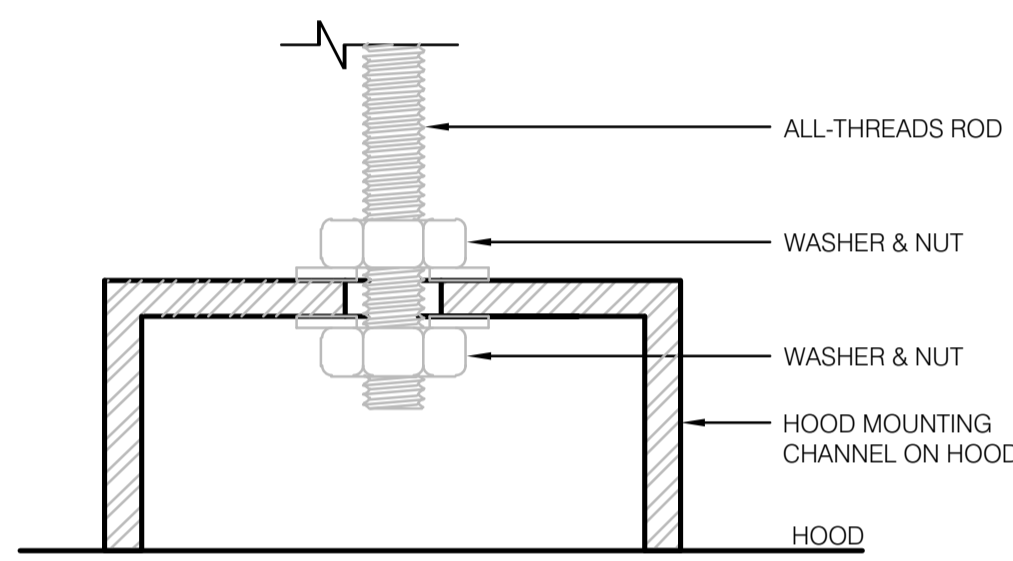
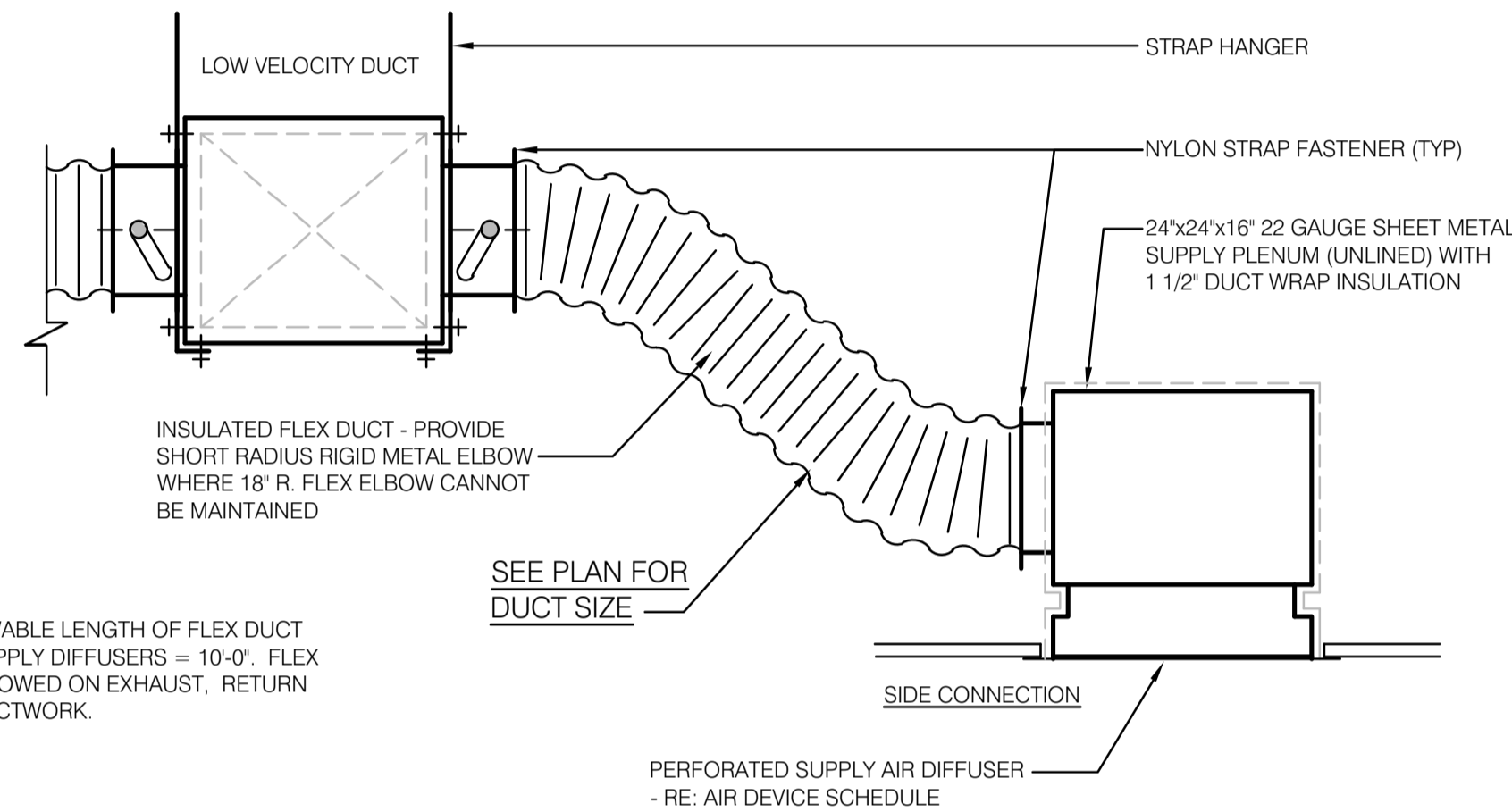


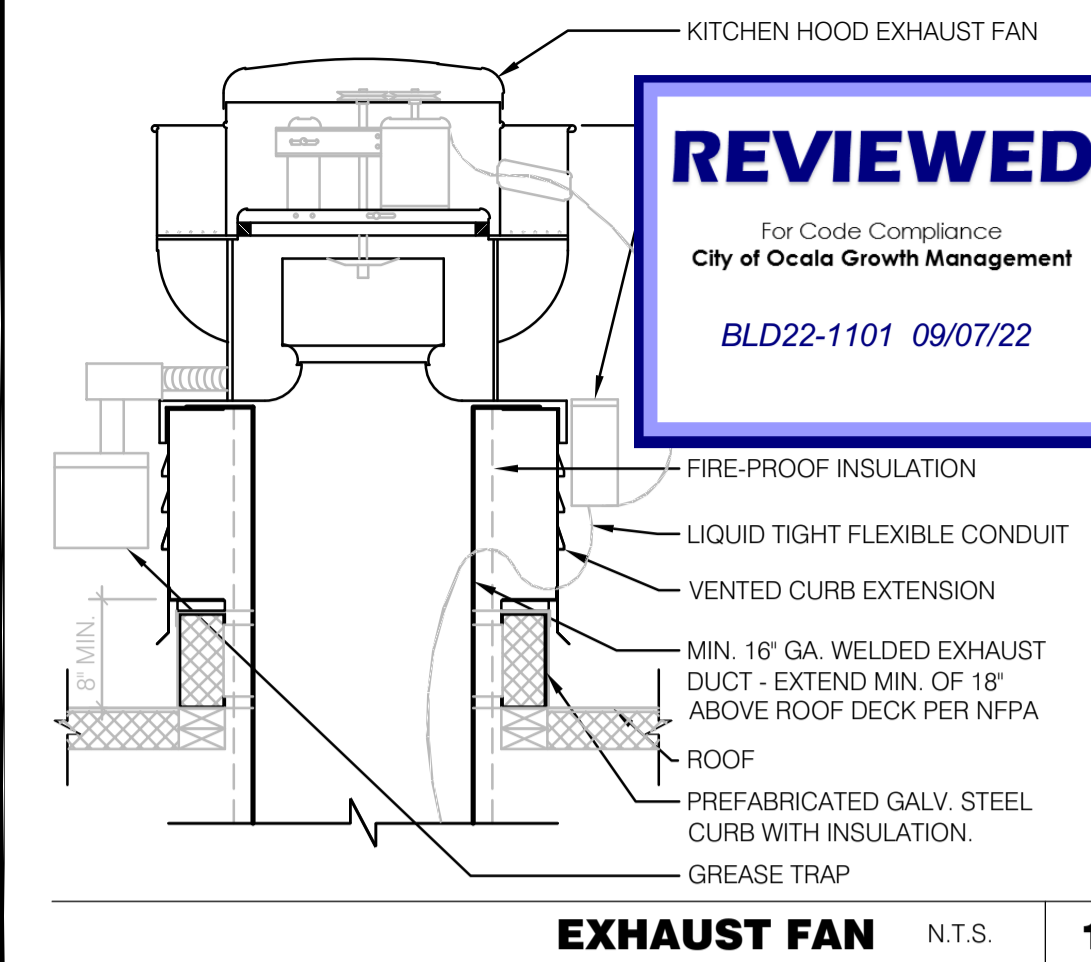
ROD ATTACHMENT 3' = 1'-0" **13**



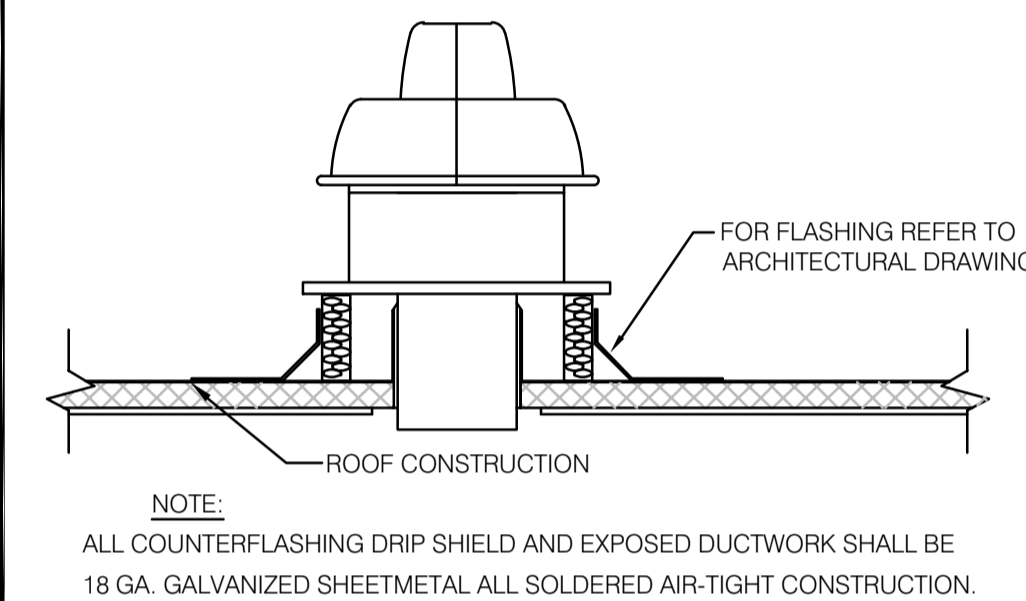
BOLT CONNECTION TO HOOD N.T.S. **14**



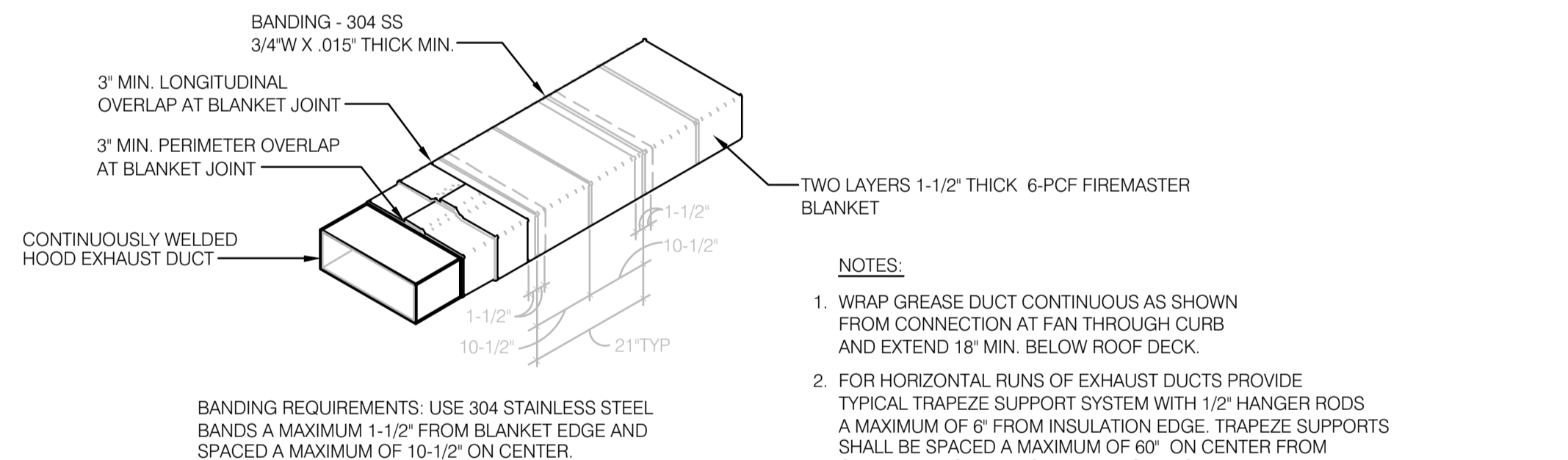
OPTIONAL KITCHEN AREA CEILING DIFFUSER (S-5) CONNECTION DETAIL N.T.S. **6**



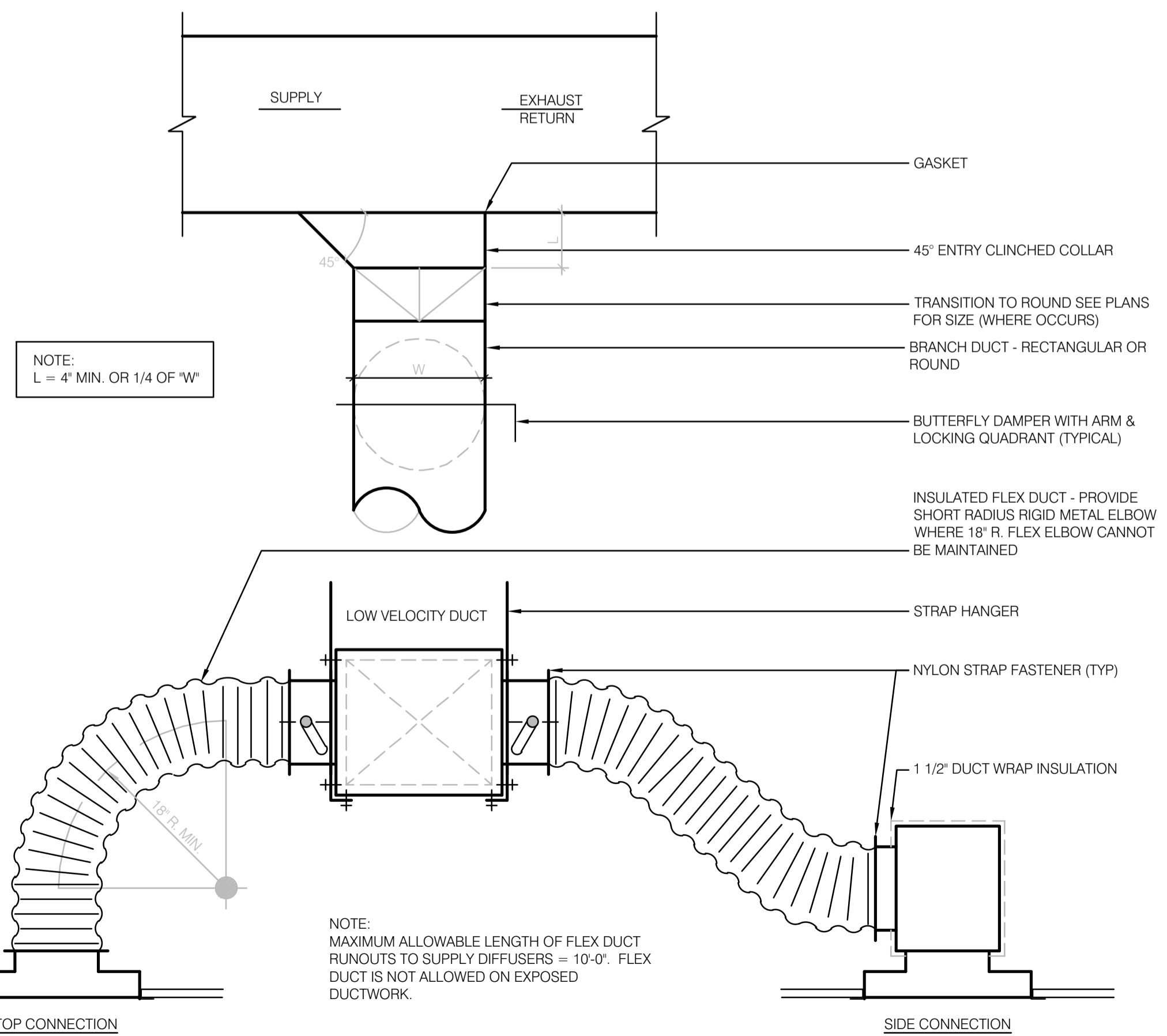
EXHAUST FAN N.T.S. **1**



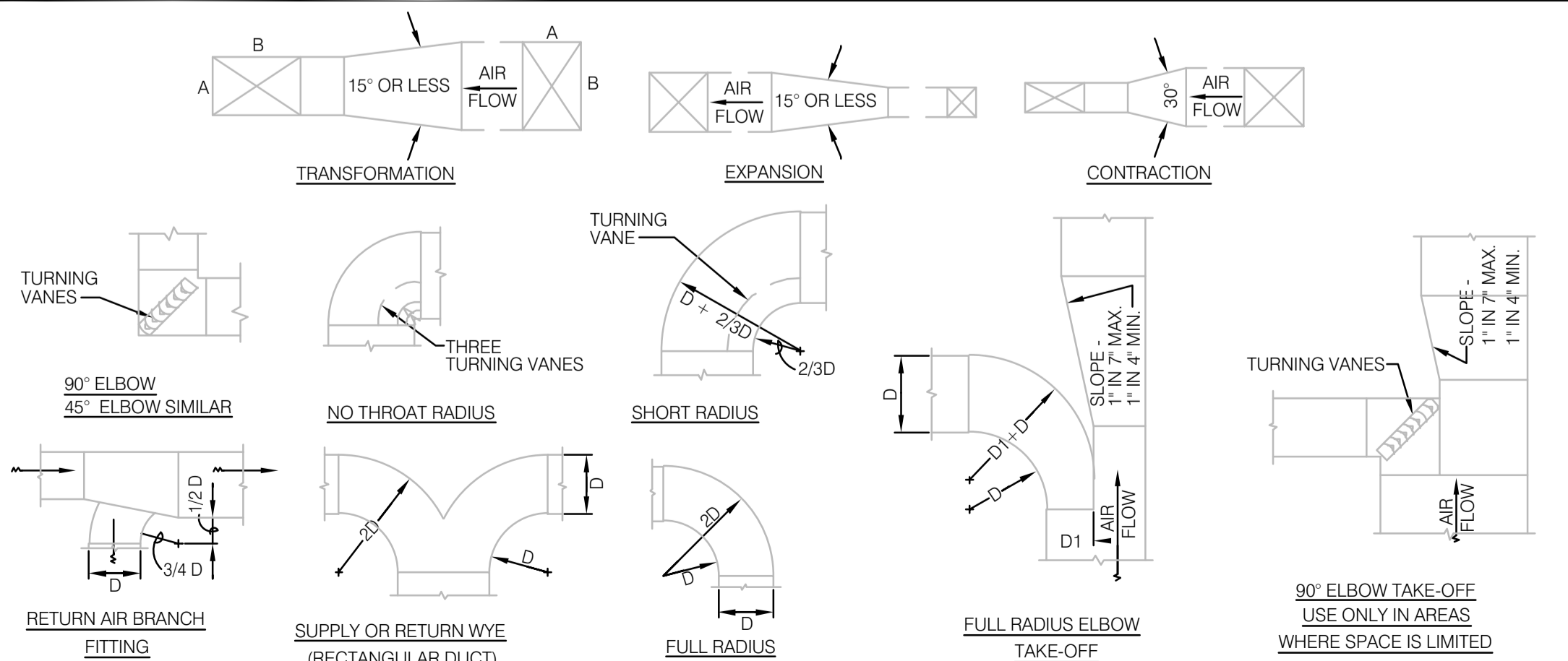
ROOF MOUNTED EXHAUST CAP N.T.S. **2**



KITCHEN HOOD EXHAUST DUCT SYSTEM DETAIL N.T.S. **15**



CEILING DIFFUSER CONNECTIONS 3/8\"/>



TYPICAL DUCTWORK DETAILS N.T.S. **16**

- GENERAL NOTES**
- Exhaust duct collars may be field cut.
 - Exhaust duct air flow velocity shall be greater than 1500 FPM, lower if allowed by local codes.
 - Exhaust air flows must be balanced upon installation.
 - Fan operating speed should be rechecked after 60 days to ensure proper performance. Static pressure values are given for the hood only (unless otherwise noted).

- SPECIFICATIONS**
- Hoods shall be constructed of minimum 20 gauge stainless steel with # 3 polish. All unexposed surfaces shall be constructed of minimum 18 gauge aluminized steel.
 - UL classified aluminum or stainless steel baffle-type filters shall be easily removed for cleaning. Filter housing shall terminate in a pitched grease trough that drains into a removable stainless steel grease cup.
 - UL listed and NSF approved vapor proof light fixtures pre-wired to junction box at top of hood in accordance with NEC 70. Lamps to be screw-in CFL, provided by others.
 - Pre-pped fire suppression systems shall be located on the top of the hood and provided with the hood or by a certified technician. Final location of all nozzles and fire suppression drops to be locally approved and inspected.
 - Hood(s) shall be fabricated in accordance with NFPA Bulletin #96 and shall bear the NSF Seal of Approval. Hoods shall be listed under UL 710 EXHAUST HOODS FOR COMMERCIAL COOKING EQUIPMENT, Certified by ETL under FILE# 3054804-001.

THIS HOOD DESIGN IS BASED UPON STRATOVENT, MODEL SVND2. MANUFACTURED BY: STRATOVENT VENTILATION HOODS RALEIGH, NC 27616 CONTACT: JEFF JOHNSON, 251-490-6114

HOOD NOTES AND SPECS (TYP.) **4**

NOT USED **17**

NOT USED **18**

NOT USED **5**

ARCHITECTURE
ENGINEERING

LIS

ENGINEERING OFFICE
21430 Palm Beach Blvd.
Avala, Fla. 33920
Phone: (239) 693-9244
facsimile: (239) 693-9828

LAND INVESTMENT SERVICES, LLC
AA 26002040 CA NO: 6853 LB1057
ARCHITECTURE / ENGINEERING OFFICE
10000 Rockledge Ave. Suite 2064, Oviedo, FL 32765
Phone: (321) 244-0402
facsimile: (321) 244-9419



Digitally signed by
ROBERT W CASE
Date:
2022.03.31 10:28:17 -04'00'

ROBERT WAYNE CASE
FLORIDA PE #44643

PLAN SET REVISIONS:

CONTRACT DATE: .., 2019
BUILDING TYPE: Kb 30-19
PLAN VERSION: 2018.A
SITE NUMBER:
ENTITY NUMBER:
STORE NUMBER:
LIS PROJECT: 2019-304

KFC
3615 W SILVER SPRINGS BLVD.
OCALA, FL



MECHANICAL SYSTEM DETAILS

M4.0

PLOT DATE: 03/29/2022