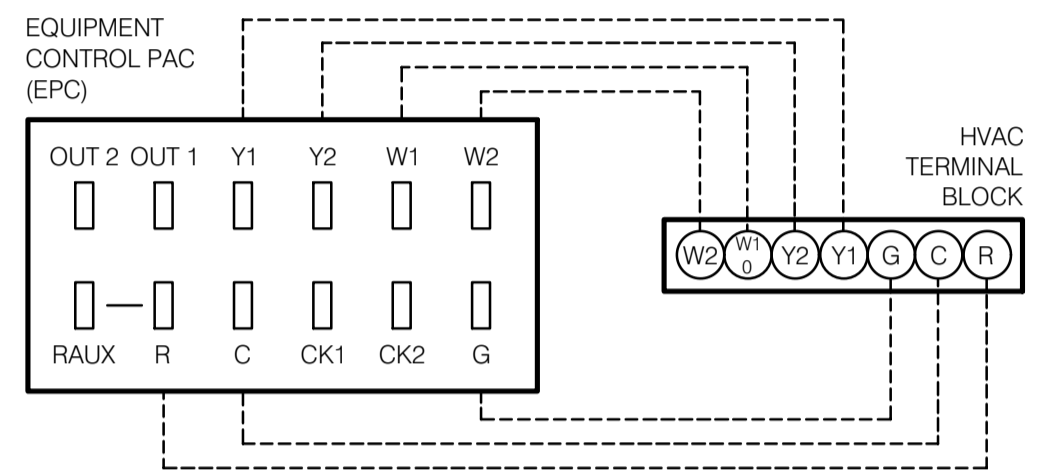


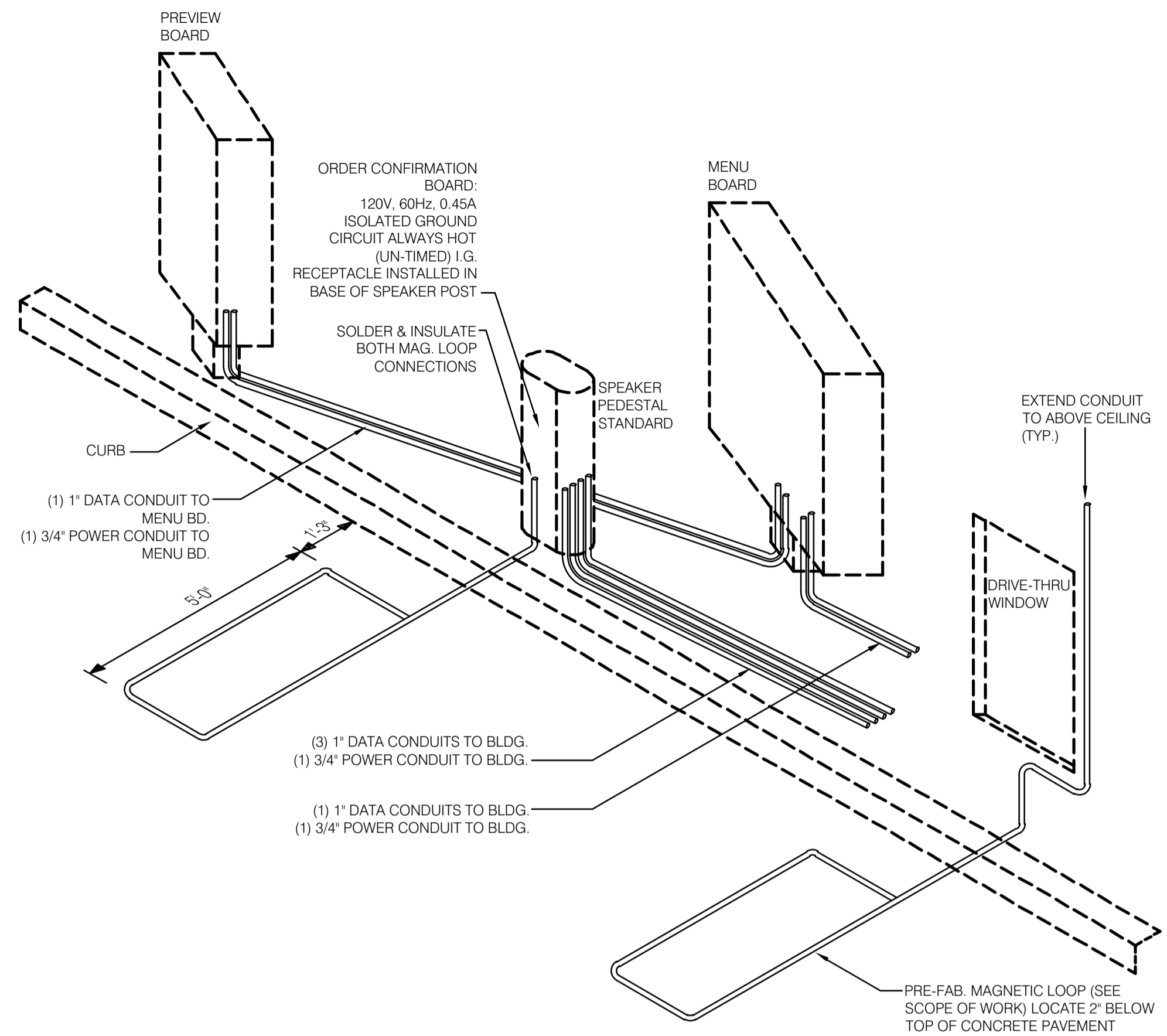
NOTE: GREEN GROUND WIRE REQUIRED IN ALL CONDUITS, SIZED PER N.E.C. REQUIREMENTS.

UNDER SLAB CONDUIT N.T.S. **17**



WIRES FROM RTU TERMINAL MARKED	FUNCTION	INSTALL ON ECP CONNECTOR MARKED
G or F	Fan	G
Y1, Y or C	Cooling	Y1
W1, W or H	Heating	W1, O, B
Rh, R, M, Vr or A	Power	R
C	Common	C
O/B	Rev. Valve	W1, O, B
W2	2nd Stage Heat	W2
Y2	2nd Stage Cool	Y2

RTU INNER CONNECTION N.T.S. **18**



DRIVE THRU COMMUNICATIONS ISOMETRIC N.T.S. **14**

THIS INTERLOCK SYSTEM IS INTENDED TO MAKE AVAILABLE A FULL VOLUME OF REPLACEMENT AIR TO THE BUILDING WHEN ALL EXHAUST FANS ARE ACTIVATED BY THE "OCCUPIED" RELAY.

SEQUENCE OF OPERATION:

OCCUPIED MODE:
"OCCUPIED" SWITCH IN MANAGER'S OFFICE IS SWITCH TO "OCCUPIED" STATE. KITCHEN EXHAUST FAN STARTERS SHALL ENERGIZE STARTING BOTH EXHAUST FANS. KITCHEN EQUIPMENT LOCATED UNDER THE HOODS SHALL BE ENERGIZED VIA CONTACTORS C-4.1 AND C-4.2 VIA CONTACTOR C-3.1. AN AUXILIARY CONTACT IN EACH EXHAUST FAN MOTOR STARTER SHALL CLOSE, TURNING ON HOOD WORK LIGHTS, INDICATING THAT THE EXHAUST FAN STARTER HAS BEEN ACTIVATED.

SPACE THERMOSTAT SENSORS SHALL CYCLE ROOFTOP TOP UNITS TO MAINTAIN "OCCUPIED" SPACE TEMPERATURES.

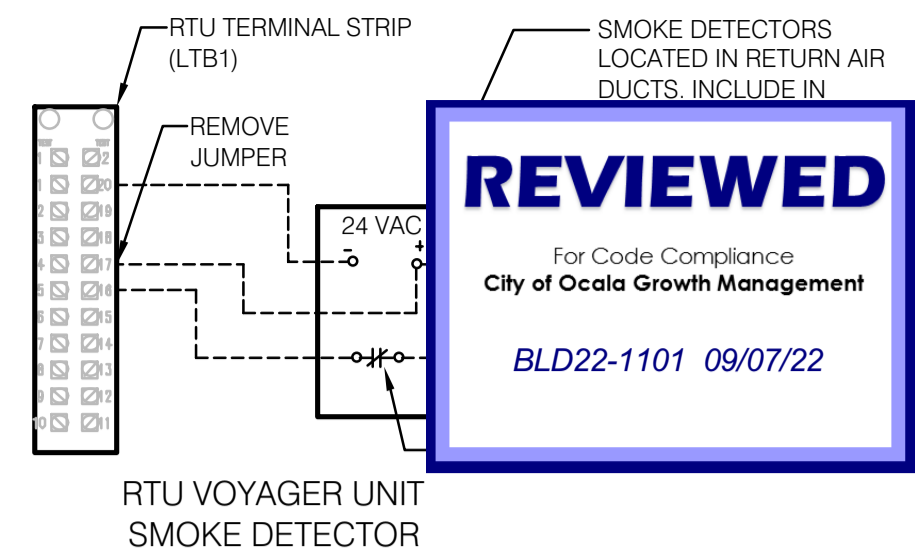
UN-OCCUPIED:
WHEN "OCCUPIED" SWITCH IN MANAGER'S OFFICE IS TURNED TO THE "UN-OCCUPIED" MODE, CONTACTOR C-3.1 SHALL DE-ENERGIZE, CAUSING THE KITCHEN EQUIPMENT UNDER THE HOODS TO DE-ENERGIZE VIA CONTACTORS C-4.1 AND C-4.2 AND EXHAUST FANS SHALL CEASE OPERATION. ALSO, HOOD LIGHTS SHALL BE TURNED OFF.

SPACE THERMOSTATS SHALL CYCLE ROOFTOP FANS AND HEATING OR COOLING TO MAINTAIN "UN-OCCUPIED" SPACE TEMPERATURES.

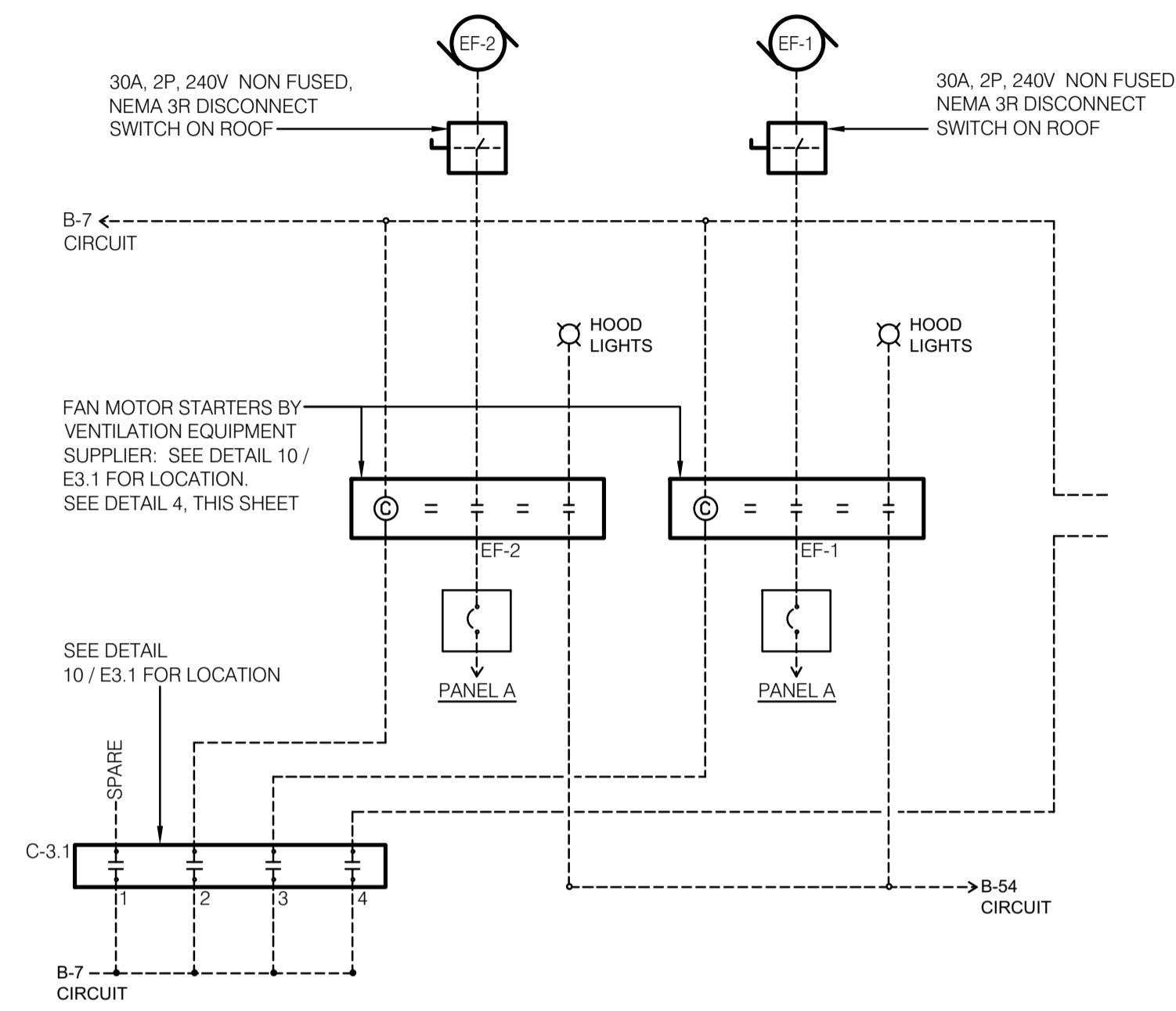
EMERGENCY OPERATION:
ASHRAE STANDARD 154 (7.1.1)
NFPA 96 (13.3)
IMC 2009-A

UPON ACTIVATION OF ANY HOOD FIRE SUPPRESSION RELAY, A RELAY IN THAT FIRE SUPPRESSION SYSTEM SHALL CAUSE AN INTERRUPTION OF POWER TO CONTACTORS C-4.1 AND C-4.2 CAUSING CONTACTS IN C-4.1 AND C-4.2 TO OPEN UP AND THUS REMOVING POWER FROM ALL DEVICES LOCATED UNDER THE HOODS. EXHAUST FANS SHALL NOT BE EFFECTED BY THIS OPERATION AND SHALL CONTINUE TO BE CONTROLLED BY THE "OCCUPIED" OR "UN-OCCUPIED" CONDITIONS.

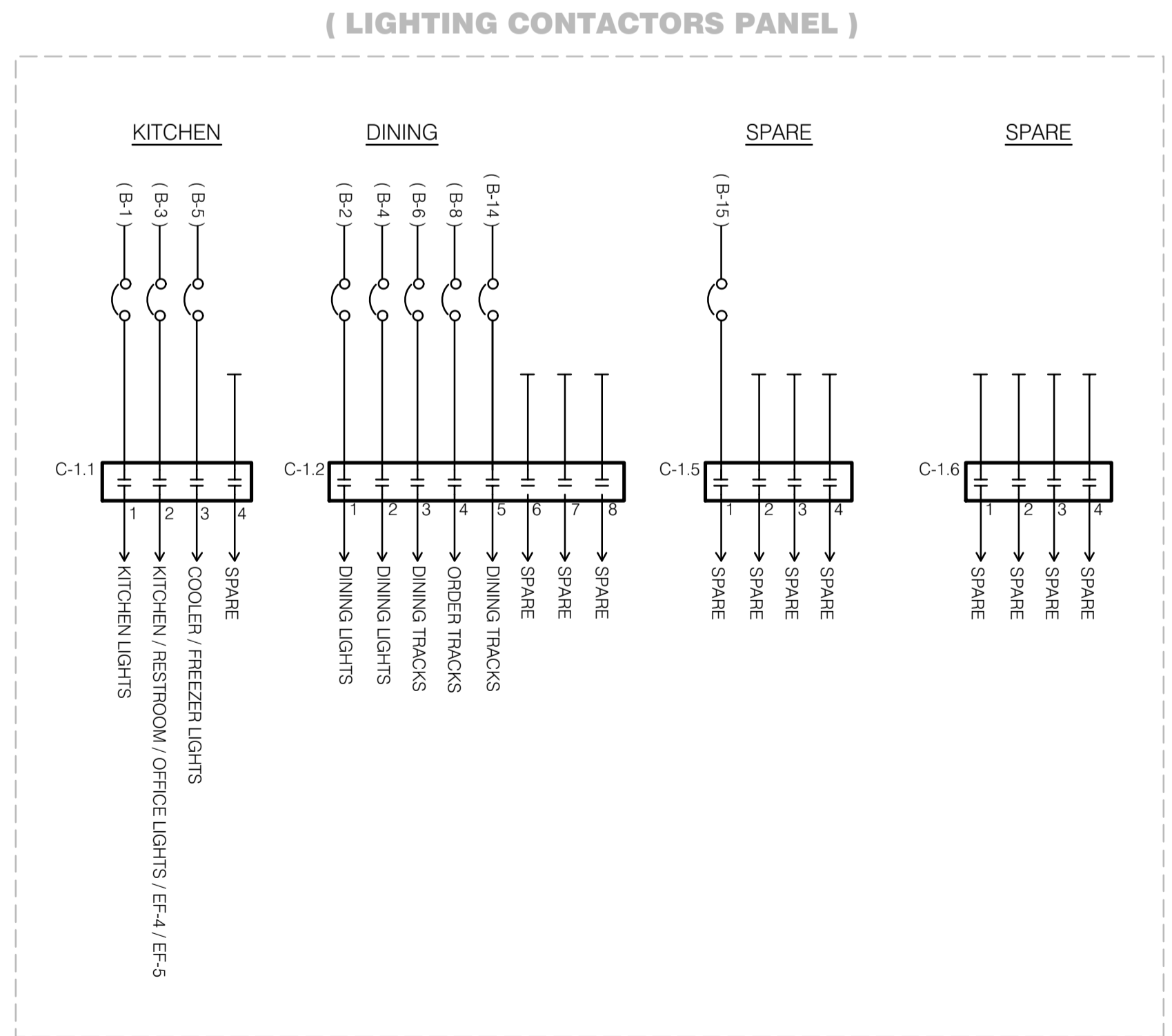
- NOTES:**
- REFER TO THE ELECTRICAL ROOF PLAN, SHEET E3.2 FOR UNIT LOCATIONS AND FURTHER ELECTRICAL REQUIREMENTS.
 - REFER TO THE MECHANICAL SCHEDULES ON SHEET M1.0 FOR ELECTRICAL REQUIREMENTS.



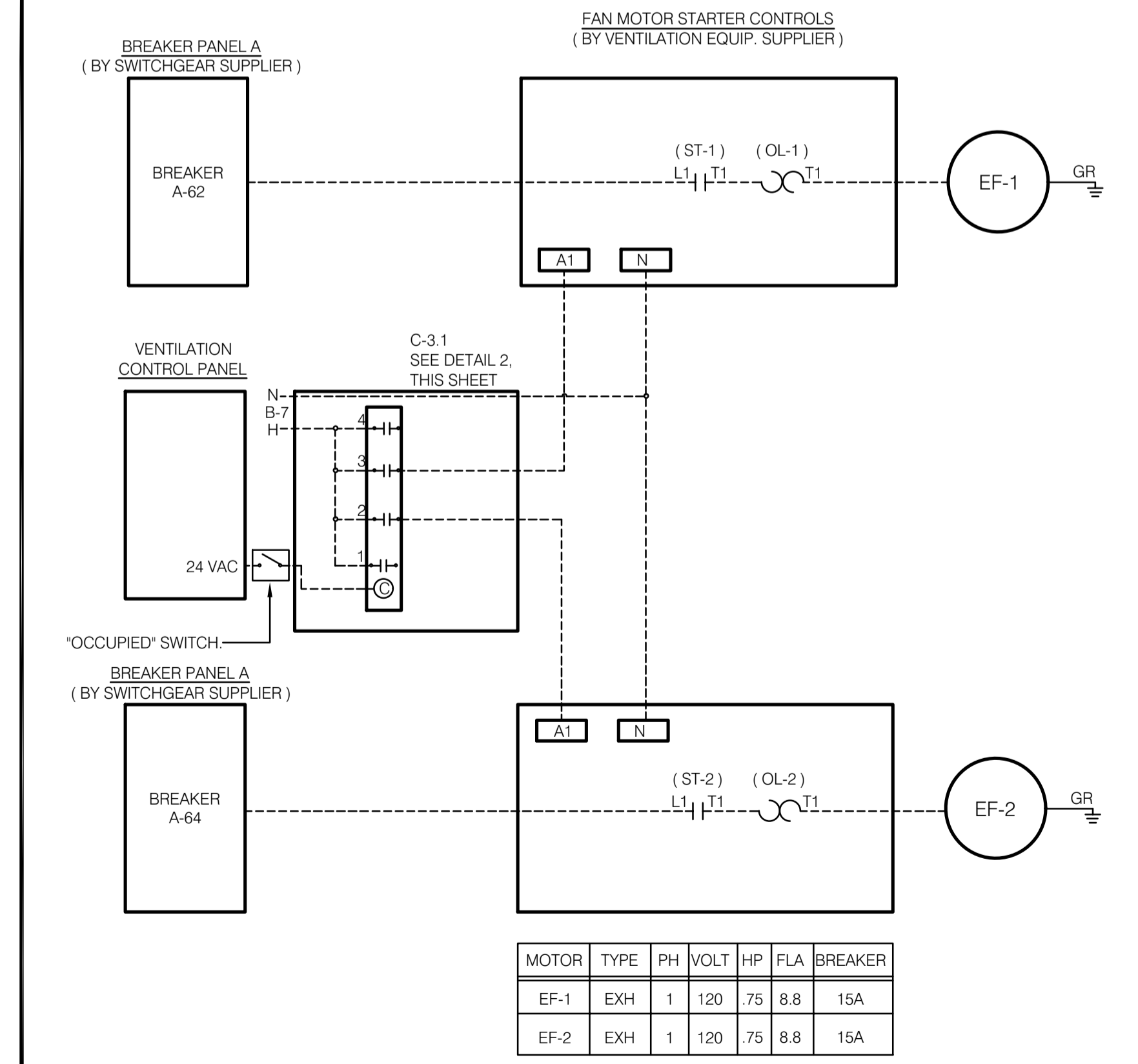
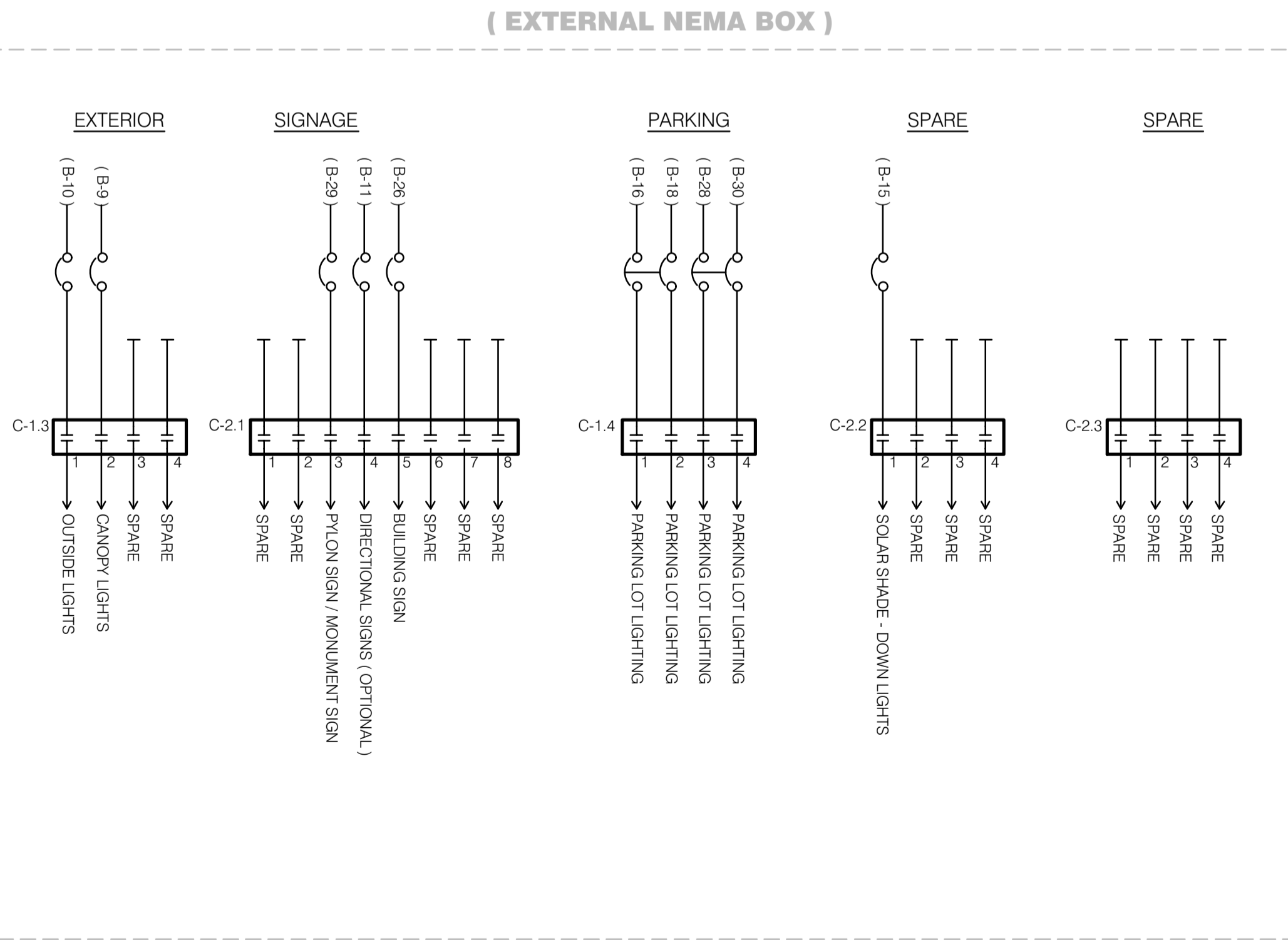
RTU VOYAGER UNIT SMOKE DETECTOR



HOOD SHUT-DOWN DETAIL N.T.S. **2**



LIGHTING CONTACTORS N.T.S. **8**



EXHAUST FAN MOTOR STARTERS N.T.S. **4**

LIS ARCHITECTURE ENGINEERING

ENGINEERING OFFICE
21430 Palm Beach Blvd.
Avala, Fla. 33920
Phone: (239) 693-9244
fax: (239) 693-9828

LAND INVESTMENT SERVICES, LLC
AA 26002040 CA NO: 6853 LB1057

ARCHITECTURE / ENGINEERING OFFICE
15000 N. US Highway 1
Suite 2064, Ocala, FL 32765
Phone: (321) 244-0402
fax: (321) 244-9419

Digitally signed by
ROBERT W CASE
Date:
2022.03.31
10:25:37
-04'00'

ROBERT WAYNE CASE
FLORIDA PE. #44643

PLAN SET REVISIONS:

△	
△	
△	
△	
△	
△	
△	
△	
△	
△	
△	

CONTRACT DATE: ..-2019
BUILDING TYPE: Kb 30-19
PLAN VERSION: 2018.A
SITE NUMBER:
ENTITY NUMBER:
STORE NUMBER:
LIS PROJECT: 2019-304

KFC
3615 W SILVER SPRINGS BLVD.
OCALA, FL

Kb 30-19

ELECTRICAL LINE DIAGRAMS AND DETAILS

E6.0

PLOT DATE: 03/29/2022