

**REVIEWED**

For Code Compliance  
City of Ocala Growth Management

BLD22-1101 09/07/22

ENGINEERING OFFICE  
21430 Palm Beach Blvd.  
Avala, Fla. 33920  
Phone: (239) 693-9244  
facsimile: (239) 693-9828

ARCHITECTURE  
ENGINEERING

**LIS**  
LAND INVESTMENT SERVICES, LLC  
AA 2602040 CA NO: 6853 LB1057



Digitally signed by  
**ROBERT W CASE**  
Date: 2022.03.31  
10:24:40 -04'00'

ROBERT WAYNE CASE  
FLORIDA PE #44643

PLAN SET REVISIONS:

- |  |  |
|--|--|
|  |  |
|  |  |
|  |  |
|  |  |
|  |  |
|  |  |
|  |  |
|  |  |
|  |  |
|  |  |
|  |  |
|  |  |
|  |  |

CONTRACT DATE: ..-2019  
BUILDING TYPE: Kb 30-19  
PLAN VERSION: 2018.A  
SITE NUMBER:  
ENTITY NUMBER:  
STORE NUMBER:  
LIS PROJECT: 2019-304

**KFC**

3615 W SILVER SPRINGS BLVD.  
OCALA, FL

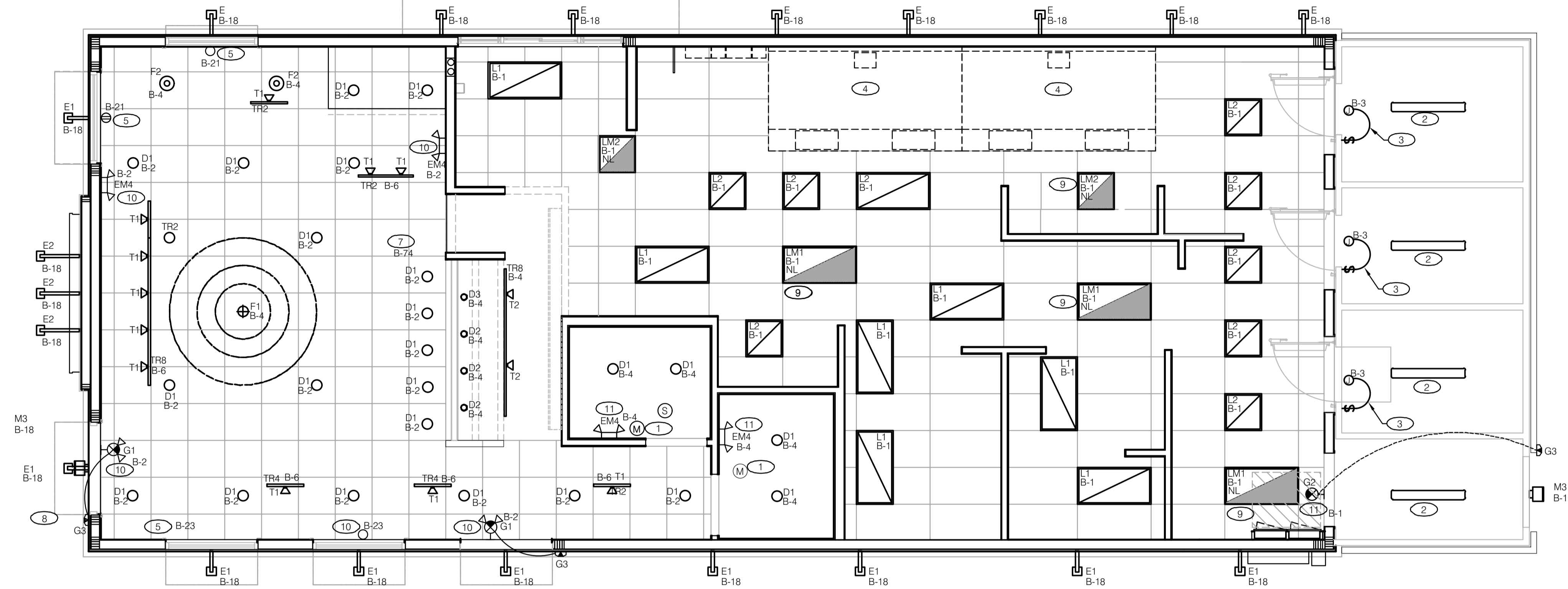


Kb 30-19

**LIGHTING  
PLAN AND  
SCHEDULE**

**E4.0**

PLOT DATE: 03/29/2022



**GENERAL NOTES**

- CONFIRM LIGHTING FIXTURE QUANTITIES WITH SUPPLIER.
- EMERGENCY AND NORMAL LIGHTING MARKED WITH "NL" SUBSCRIPT SHALL OPERATE CONTINUOUSLY. PROVIDE UNSWITCHED HOT TO NORMAL AND EMERGENCY BALLAST.
- EMERGENCY LIGHTING NOT MARKED WITH "NL" SUBSCRIPT SHALL OPERATE UNDER CONTROL OF LIGHTING SWITCH AS INDICATED. PROVIDE UNSWITCHED CONSTANT HOT TO EMERGENCY BALLAST AND SWITCHED HOT TO NORMAL BALLAST.
- ALL CONDUITS ENTERING OR LEAVING COOLER/FREEZER SHALL BE PROVIDED WITH SEAL-OFF FITTING WITH COMPOUND PER NEC 300-(7a).
- ALL INTERIOR LIGHTING CIRCUITS TO BE WIRED THRU THE LIGHTING CONTROL RELAYS.  
SEE 2/E6.0.
- CONTRACTOR TO FIELD VERIFY CEILING TYPE AND PROVIDE PROPER MOUNTING HARDWARE.
- ALL FIXTURES SUPPLIED WITH LAMPS.
- EXIT AND EMERGENCY LIGHTING TO BE FED FROM LOCAL CIRCUIT AND HAVE 90 MINUTE BATTERY BACKUP.

NOTE:  
CONTRACTOR SHALL VERIFY ALL QUANTITIES OF LIGHT FIXTURES. NOT ALL FIXTURE TYPES MAY BE USED.

FIXTURES PROVIDED BY DISTRIBUTOR / LIGHTING SUPPLIER : INSTALLED BY G.C.				
<b>LIGHTING SCHEDULE</b>				
NO.	LOCATION	MRG/CATALOG NUMBER	DESCRIPTION	WATTS/ VOLTS
D-1	DINING	ELITE: B6IC-AT-W (HOUSING) TCP: 70874 LED14DR5630K95	6" IC AIR SHUT RECESSED CAN WITH MEDIUM BASE SOCKET AND HANGER BARS, WHITE 6" 3000K 95 CRI TRIM WITH QUICK CONNECT PLUG	14 WATTS / 120 VOLTS
D-2	FRONT COUNTER	CONTECH: LVR316S-35WATT (HOUSING) CONTECH: CTR301-WHT-P	3" LOW VOLTAGE DOWNLIGHT WITH WHITE ADJUSTABLE BAFFLE TRIM WITH 15 DEGREE ADJUSTMENT	7 WATTS / 120 VOLTS
D-3	FRONT COUNTER	CONTECH: LVR316S-35WATT (HOUSING) CONTECH: CTR325-P	3" LOW VOLTAGE DOWNLIGHT WITH WHITE FULLY ADJUSTABLE TRIM	7 WATTS / 120 VOLTS
F1	DINING	TECH 700TDSOCP-M-08-R-B/ 700TDMRD-3-T-B	SOCO PENDANT 8" RED / CORD W/ BLACK SOCKET	10 WATTS / 120 VOLTS
F2	DINING	MINKA: 2260-84	GLASS PENDANT WITH BRUSHED NICKEL FINISH MEDIUM BASE SOCKET	3 WATTS / 120 VOLTS
T1	DINING	JUNO: R600L3HCNW	VERTICAL INTEGRATED LED TRACK LIGHT WHITE FINISH / 3000K HI-CRI 23 DEGREE NARROW BEAM	10 WATTS / 120 VOLTS
TRACK	DINING	JUNO: 8-FT 6-FT 4-FT 2-FT	SINGLE CIRCUIT LINE VOLTAGE TRACK WHITE FINISH	
T2	MENU BOARD LIGHT	CONTECH: CTL181V3CDP	VERTICAL INTEGRATED LED WALL WASHER TRACK LIGHT / 3000K HI CRI	35 WATTS / 120 VOLTS
TRACK	MENU BOARD	CONTECH: LTR18P-LT4P-LT6P-LT2P	SINGLE CIRCUIT LINE VOLTAGE TRACK WHITE FINISH	
D1CA	TITLE 24 SALES FLOOR DOWNLIGHT (REPLACEMENT)	ELITE: B6-GU24-IC-120-W (HOUSING) ELITE: RL628DIMTR-120-30K-90+-W- WH-GU24SA	6" IC AIR SHUT RECESSED CAN WITH GU24 BASE SOCKET AND HANGER BARS	15 WATTS / 120 VOLTS
L1	KITCHEN / OFFICE RECESSED TROFFER	MOBERN: MFPEL24LED50DMWH35	2X4 LED EDGELIT FLAT PANEL 3500K	50 WATTS / 120 VOLTS

FIXTURES PROVIDED BY DISTRIBUTOR / LIGHTING SUPPLIER : INSTALLED BY G.C.				
<b>LIGHTING SCHEDULE</b>				
NO.	LOCATION	MRG/CATALOG NUMBER	DESCRIPTION	WATTS/ VOLTS
LM1	KITCHEN / OFFICE RECESSED TROFFER	MOBERN: MFPEL24LED50DMWH35	2X4 LED EDGELIT FLAT PANEL 3500K SAME AS E2 WITH BATTERY BACK-UP	50 WATTS / 120 VOLTS
L2	KITCHEN / OFFICE RECESSED TROFFER	MOBERN: MFPEL22LED35DMWH35	2X2 LED EDGELIT FLAT PANEL 3500K	35 WATTS / 120 VOLTS
LM2	KITCHEN / OFFICE RECESSED TROFFER	MOBERN: MFPEL22LED35DMWH35	2X2 LED EDGELIT FLAT PANEL 3500K SAME AS E2 WITH BATTERY BACK-UP	35 WATTS / 120 VOLTS
L3	KITCHEN / OFFICE RECESSED TROFFER	MOBERN: MFPEL14LED37DMWH35 MOBERN: SMKT14-MFPEL	1X4 LED EDGELIT FLAT PANEL 3500K WITH FLANGE KIT	37 WATTS / 120 VOLTS
LM3	KITCHEN / OFFICE RECESSED TROFFER	MOBERN: MFPEL14LED37DMWH35 MOBERN: SMKT14-MFPEL	1X4 LED EDGELIT FLAT PANEL 3500K WITH FLANGE KIT SAME AS E2 WITH BATTERY BACK-UP	37 WATTS / 120 VOLTS
G1	EXIT EMERGENCY COMBO	LIGHTALARMS: LQXNS00R-25Q	UNIVERSAL EXIT SIGN/ EMERGENCY BATTERY BACKUP WHITE	
G2	EXIT	LIGHTALARMS: QLXNS00R-N	LED EXIT SIGN	
EM4	EMERGENCY WALL PACK	LIGHTALARMS: LCA-25Q	UNIVERSAL WHITE EXIT WITH 2 HEADED EM	

FIXTURES PROVIDED BY DISTRIBUTOR / LIGHTING SUPPLIER : INSTALLED BY G.C.				
<b>EXTERIOR FIXTURES</b>				
NO.	LOCATION	MRG/CATALOG NUMBER	DESCRIPTION	WATTS/ VOLTS
E1	TOP OF WALL	AMERLUX: WAF1/30/BLK (LIGHT) AMERLUX: WAF1/BLDG MNT/BLK-36IN (BRACKET)	SINGLE ARRAY LED FLOOD LIGHT 3000K BLACK FINISH WITH CUSTOM 36" ARM BRACKET BLACK FINISH	24 WATTS / 120 VOLTS
E2	ABOVE BANNER PANEL	AMERLUX: FL7HWS/30/BLK (LIGHT) AMERLUX: WAF1/BLDG MNT/BLK-48IN (BRACKET)	SINGLE ARRAY LED FLOOD LIGHT 3000K BLACK FINISH HORIZONTAL WIDE SPOT BEAM	31 WATTS / 120 VOLTS
FL1	EXTERIOR WALLS	AMERILUX: WAF1/BLD MNT/WAF1/30/BLK	3000K LED FLOOD LIGHT WIDE ANGLE	9 WATTS / 120 VOLTS
FL2	EXTERIOR WALLS	AMERILUX: WAF1/BLD MNT/BLK-48IN	48" BRACKET FOR FL2 LIGHT 3000K LED	120 VOLTS
M3	WALL SCONCE	RAB: WPLED20Y	EXTERIOR RATED LED WALL PACK 3000K BRONZE FINISH	20 WATTS / 120 VOLTS
G3	WALL SCONCE	LIGHTALARMS: CAM-SD-BL-CW	2 HEAD LED EXTERIOR WALL PACK EMERGENCY LIGHT, DARK GREY	

- RESTROOM LIGHTS AND EXHAUST FANS SHALL BE CONTROLLED BY WALL MOUNTED MOTION SENSOR. REFER TO SHEET M2.0 FOR COORDINATION.
- FOR LIGHTING FIXTURES, CONDUIT, CONDUCTORS AND INSTALLATION RESPONSIBILITIES, REFER TO SCOPE OF WORK.
- FIXTURE AND SWITCH FACTORY INSTALLED WITH UNIT. G.C. TO COMPLETE CIRCUITING.
- EXHAUST HOOD LIGHT FIXTURES SUPPLIED WITH HOOD AND MTD IN PRE-WIRED J-BOX. COMPLETE CIRCUITING PER DETAIL 2/E6.0.
- MOUNT SHOW WINDOW RECEPTACLE WITHIN 18" OF TOP OF WINDOW.
- EMERGENCY LIGHT TO BE CEILING MOUNTED.
- PROVIDE JUNCTION BOX FOR HOT W FRESH SIGN. COORDINATE FIXTURE MOUNTING HEIGHT AND EXACT LOCATION WITH G.C.
- G.C. SHALL COORDINATE LOCATION OF CONDUIT PENETRATION OF BUILDING SHELL WITH SIGN VENDOR PRIOR TO PERFORMING WORK.
- CONNECT EMERGENCY BALLAST OR BATTERY BACKUP OF EMERGENCY LIGHT OR EXIT SIGN TO UNSWITCHED CONTINUOUSLY HOT CONDUCTOR OF LOCAL LIGHTING CIRCUIT INDICATED. NORMAL LIGHTING FIXTURES NOT MARKED AS "NL" FOR NIGHT LIGHT SHALL BE WIRED FOR SWITCHED NORMAL OPERATION.
- CONNECT EMERGENCY BALLAST OR BATTERY BACKUP OF EMERGENCY LIGHT OR EXIT SIGN TO UNSWITCHED CONTINUOUSLY HOT CONDUCTOR OF LOCAL LIGHTING CIRCUIT INDICATED.