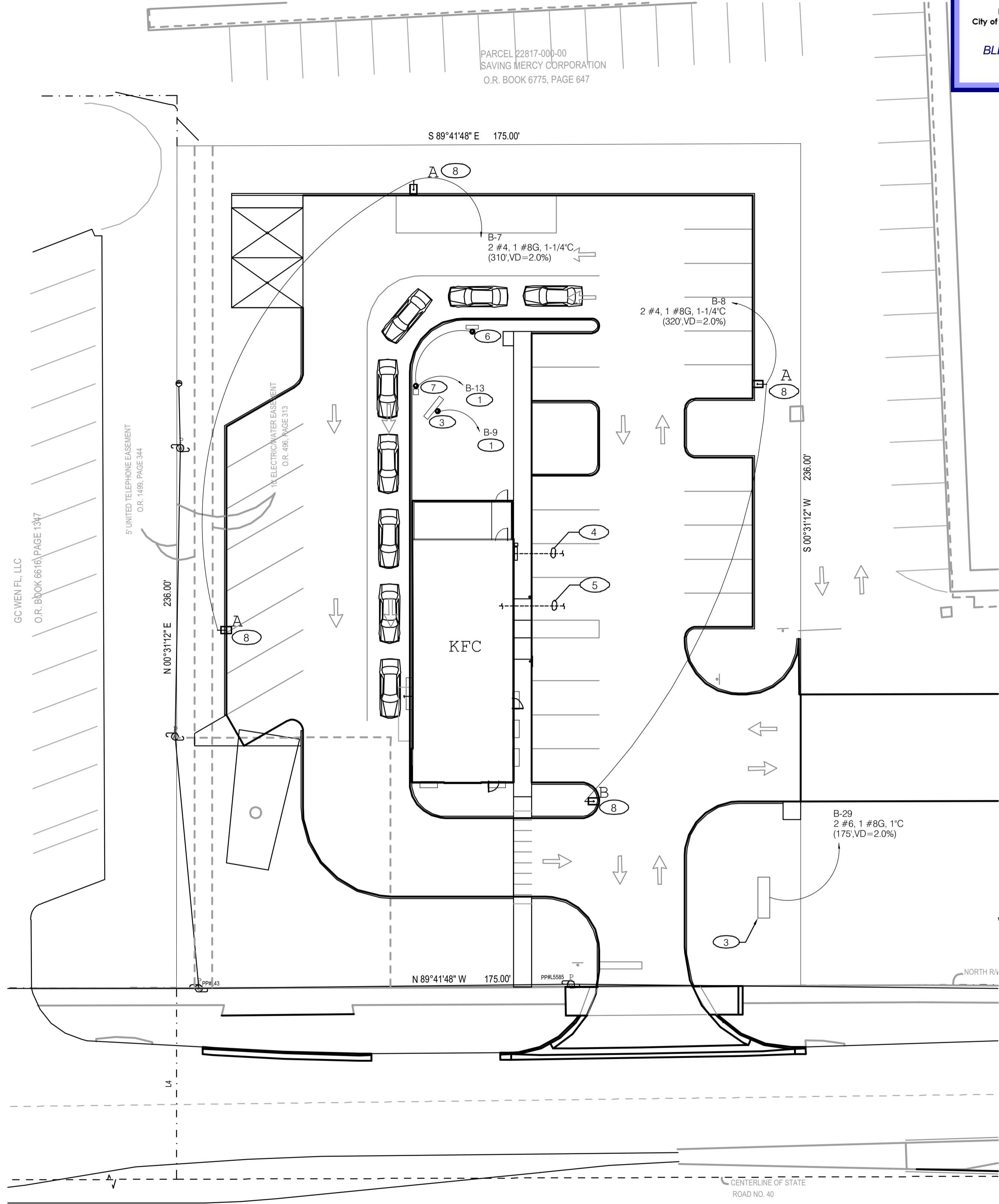


REVIEWED
 For Code Compliance
 City of Ocala Growth Management
 BLD22-1101 09/07/22



A. SAMPLE SITE ELECTRICAL PLAN IS FOR INFORMATIONAL REFERENCE ONLY; FOR USE BY THE SITE-ADAPT ENGINEER OF RECORD WHEN DESIGNING THE SITE-SPECIFIC ELECTRICAL PLAN(S).

- 1 3/4" C. - 2 #10, #10 GRD. (TYP. FOR ENTIRE CIRCUIT.)
- 2 DIRECTIONAL SIGN (OPTIONAL).
- 3 MENU BOARD.
- 4 PYLON SIGN. PROVIDE 30A NON-FUSED LOCKABLE DISCONNECT SWITCH IN NEMA 3R ENCLOSURE; AT BASE OF SIGN COLUMN.
- 5 UNDERGROUND ELECTRIC SERVICE TO UTILITY CO. TRANSFORMER. REFER TO CIVIL SHEETS FOR LOCATION AND ROUTING. VERIFY AND COORDINATE ALL REQUIREMENTS WITH UTILITY CO.
- 6 UNDERGROUND TELEPHONE SERVICE. REFER TO CIVIL SHEETS FOR LOCATION AND ROUTING. VERIFY AND COORDINATE ALL REQUIREMENTS WITH UTILITY CO.
- 7 PREVIEW BOARD.
- 8 ORDER CONFIRMATION BOARD/ SPEAKER POST.
- 9 SITE LIGHTING: 400W METAL HALIDE LAMPS. REFER TO KFC SITE DESIGN MANUAL FOR LIGHT POLE SPECIFICATION and MIN. / MAX. FOOT CANDLE LEVELS; VERIFY / COMPLY WITH SITE-SPECIFIC EXTERIOR ENERGY CODE.

GENERAL NOTE

C

KEY NOTES

B

SITE ELECTRICAL PLAN N.T.S. A

ARCHITECTURE
 ENGINEERING

LIS

LAND INVESTMENT SERVICES, LLC
 AA 26002040 CA NO: 6853 LB1057
 ARCHITECTURE / ENGINEERING OFFICE
 1717 E. Rockwood Ave., Suite 2064, Ocala, FL 32765
 Phone: (321) 244-0402
 facsimile: (321) 244-9419

Digitally signed by
ROBERT W CASE
 Date: 2022.03.31 10:20:46 -04'00'
 ROBERT WAYNE CASE
 FLORIDA PE #44643

PLAN SET REVISIONS:

CONTRACT DATE:	..-2019
BUILDING TYPE:	Kb 30-19
PLAN VERSION:	2018.A
SITE NUMBER:	
ENTITY NUMBER:	
STORE NUMBER:	
LIS PROJECT:	2019-304

KFC
 3615 W SILVER SPRINGS BLVD.
 Ocala, FL



**ELECTRICAL
 SITE
 PLAN**

E1.0

PLOT DATE: 03/29/2022