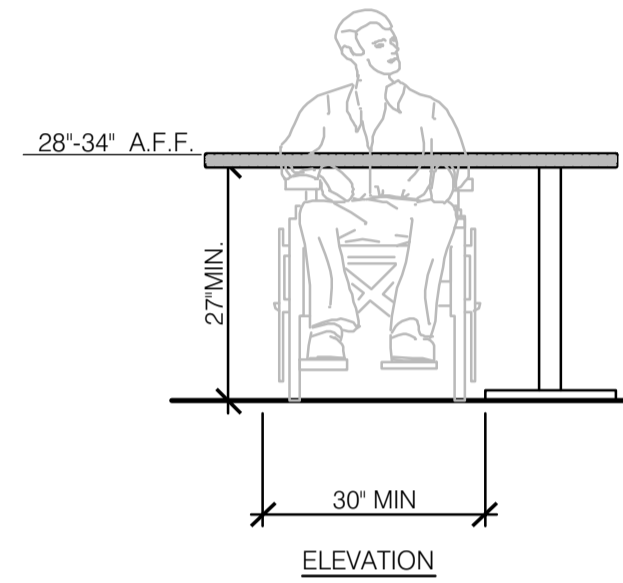


TOTAL SEATS	REQ. ACCESSIBLE SEATS
1 - 20	1
21 - 40	2
41 - 60	3
61 - 80	4
81 - 100	5
101 - 120	6
121 - 140	7

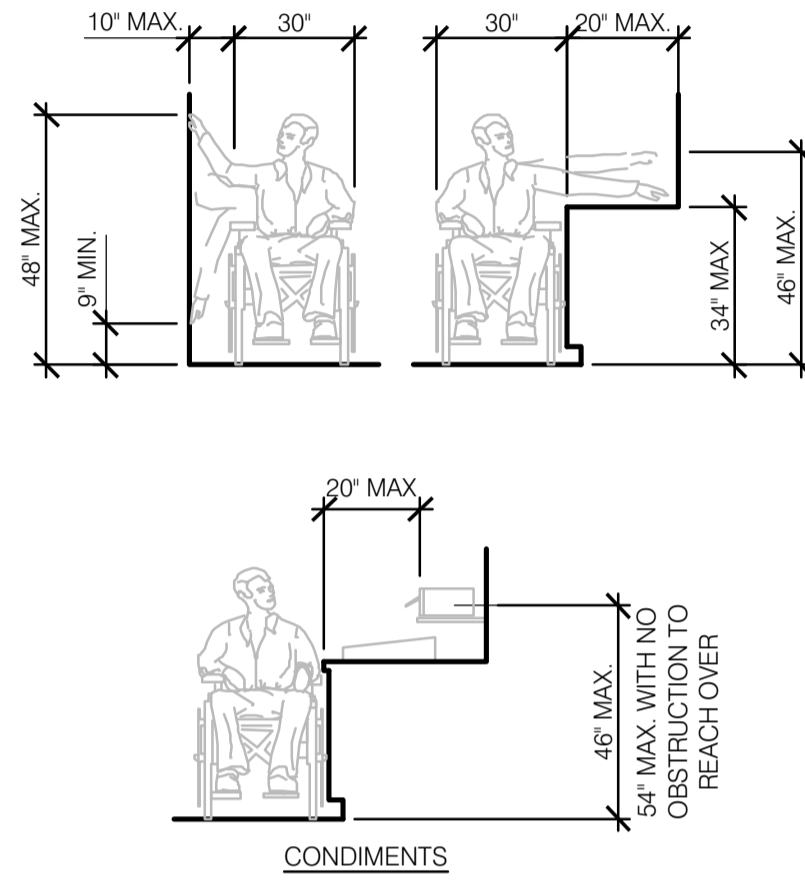
NUMBER OF ACCESSIBLE SEATS

CORRESPONDING REACH HEIGHTS FOR GIVEN DEPTHS:

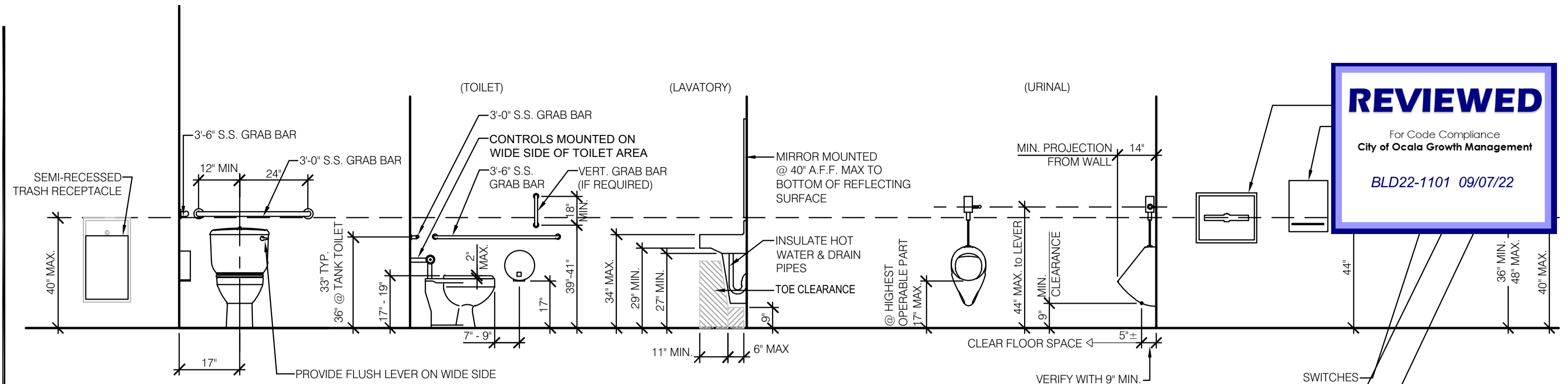
when D < 10", then H = 54.0" MAX.
 when D = 10", then H = 53.5" MAX.
 when D = 12", then H = 53.0" MAX.
 when D = 13", then H = 52.5" MAX.
 when D = 14", then H = 51.5" MAX.
 when D = 15", then H = 51.0" MAX.
 when D = 16", then H = 50.5" MAX.
 when D = 17", then H = 50.0" MAX.
 when D = 18", then H = 49.5" MAX.
 when D = 19", then H = 49.0" MAX.
 when D = 20", then H = 48.5" MAX.
 when D = 21", then H = 47.5" MAX.
 when D = 22", then H = 47.0" MAX.
 when D = 23", then H = 46.5" MAX.
 when D = 24", then H = 46.0" MAX.



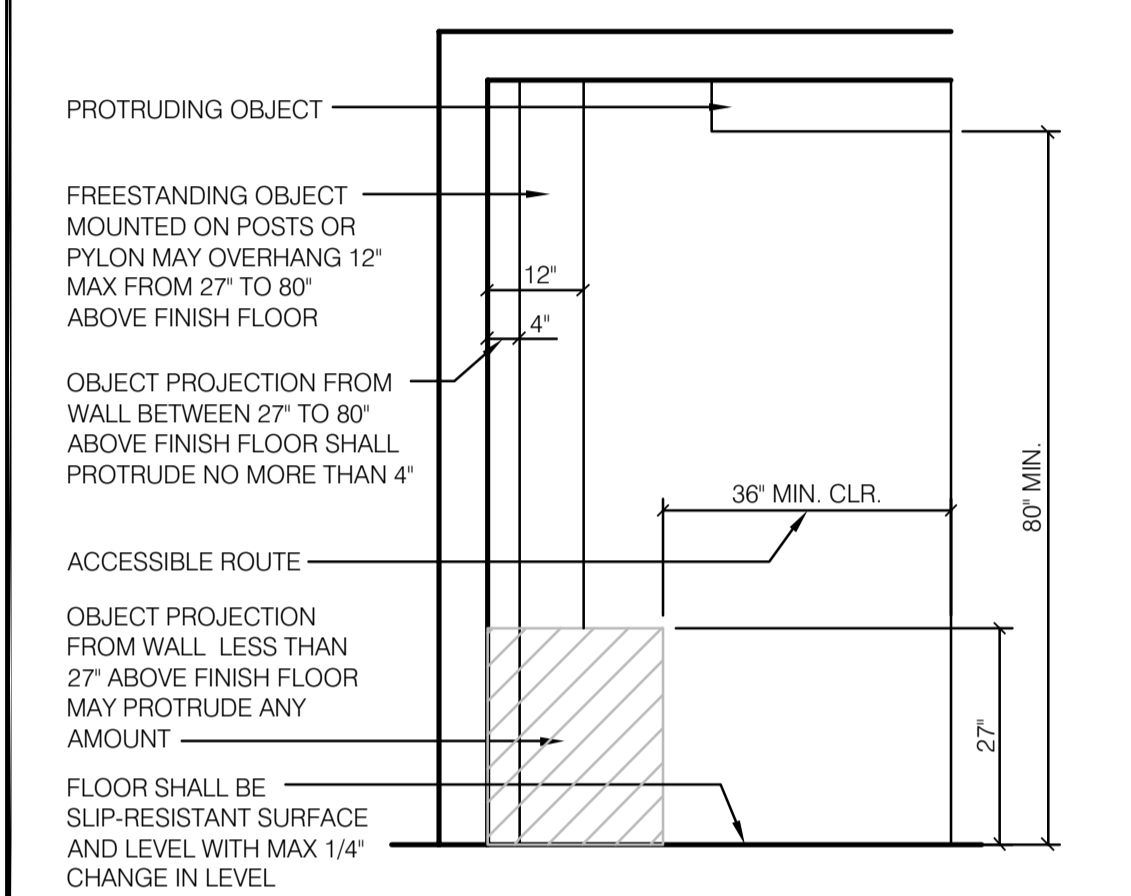
SEATING AND TABLES N.T.S. **18**



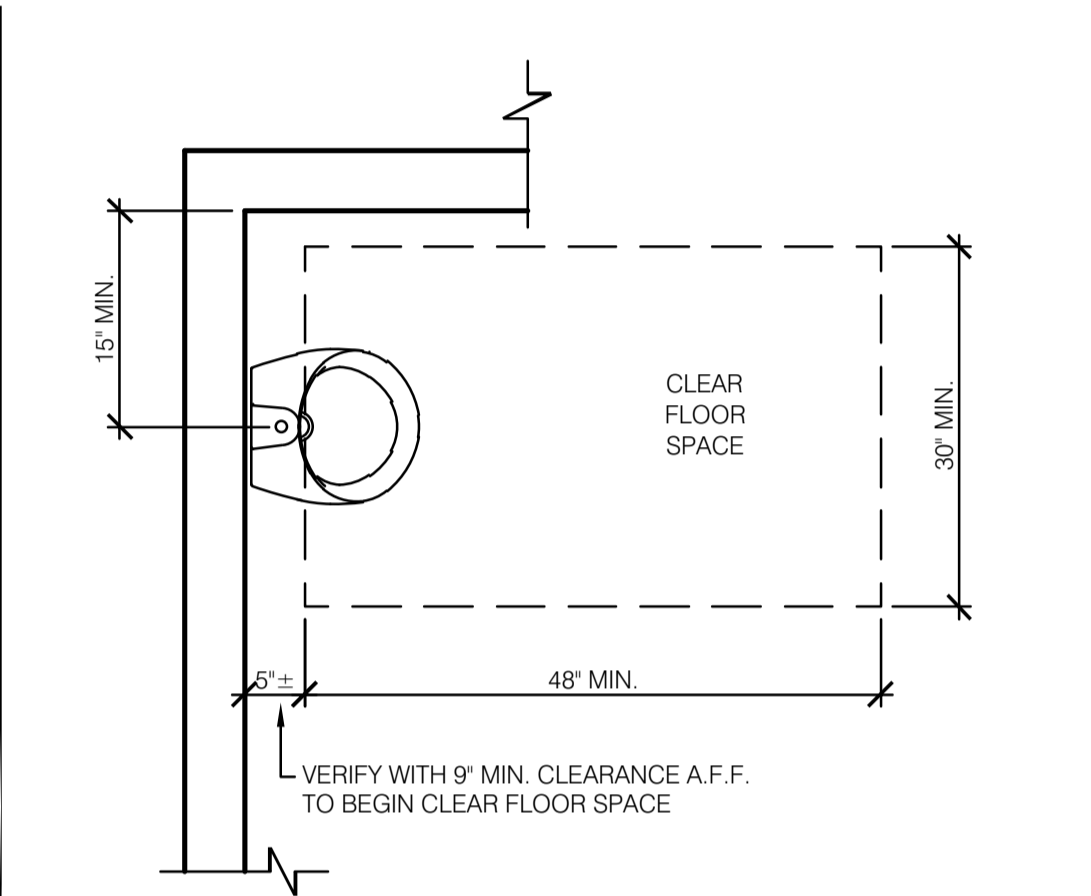
REACH RANGES N.T.S. **14**



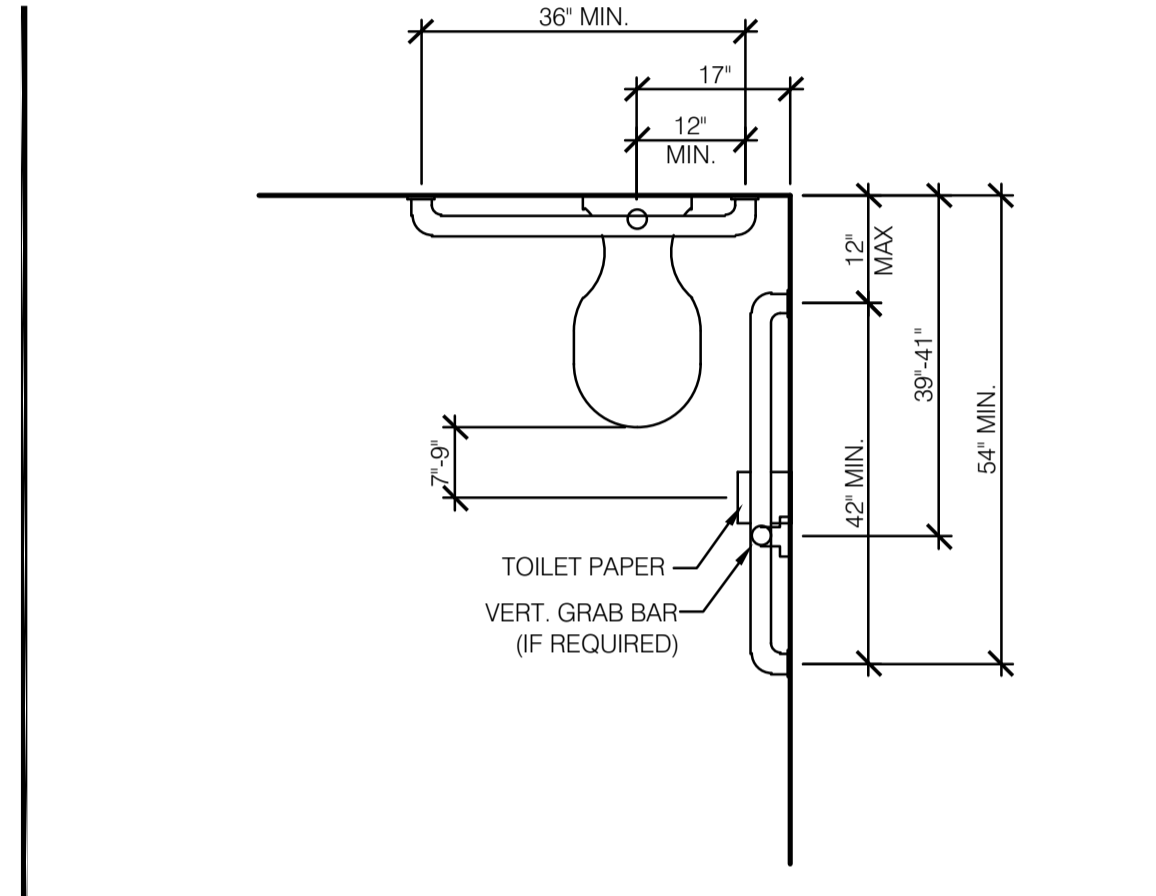
MOUNTING HTS. & CLEARANCES FOR ACCESSIBILITY BY THE DISABLED 3/8" = 1'-0" **1**



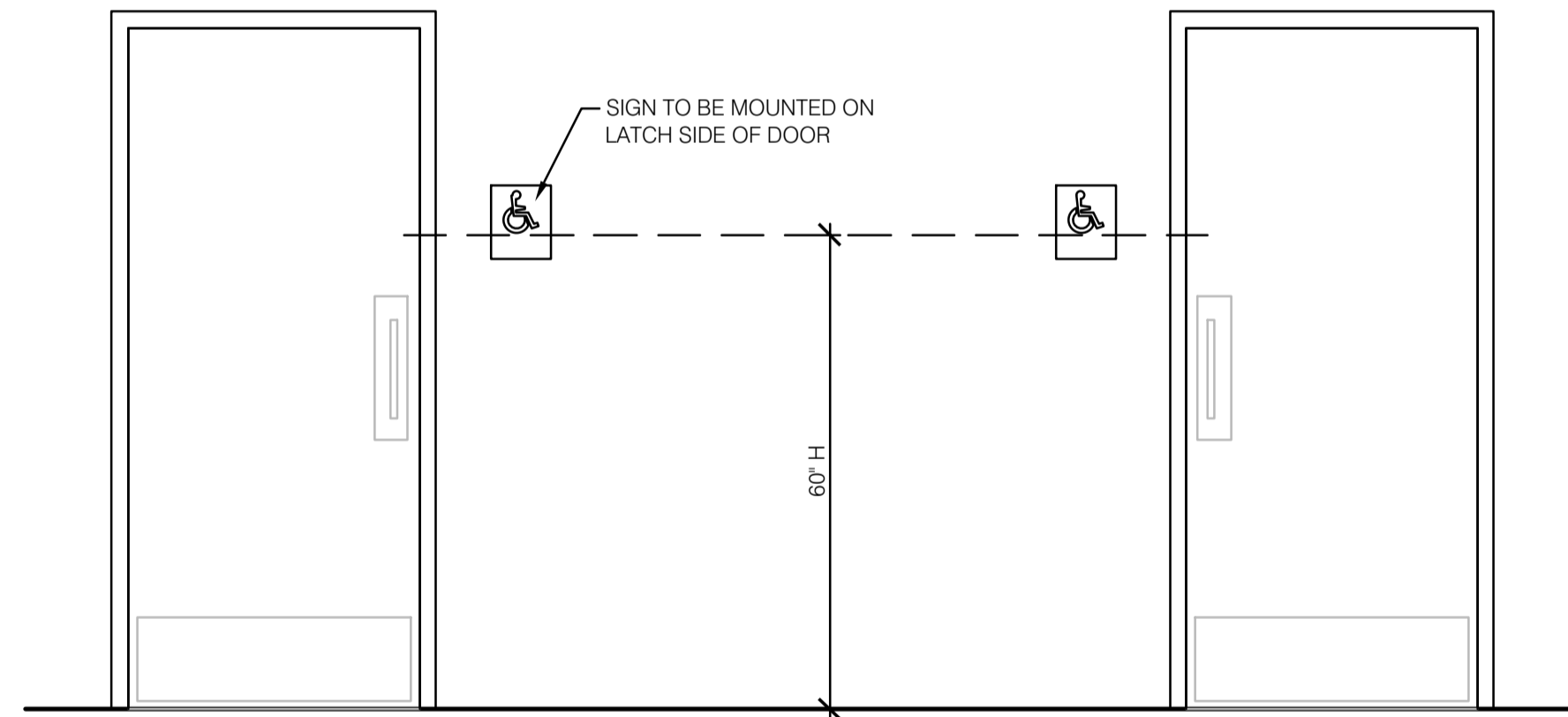
INT. ACCESS. ROUTE CLEARANCES 1/2" = 1'-0" **10**



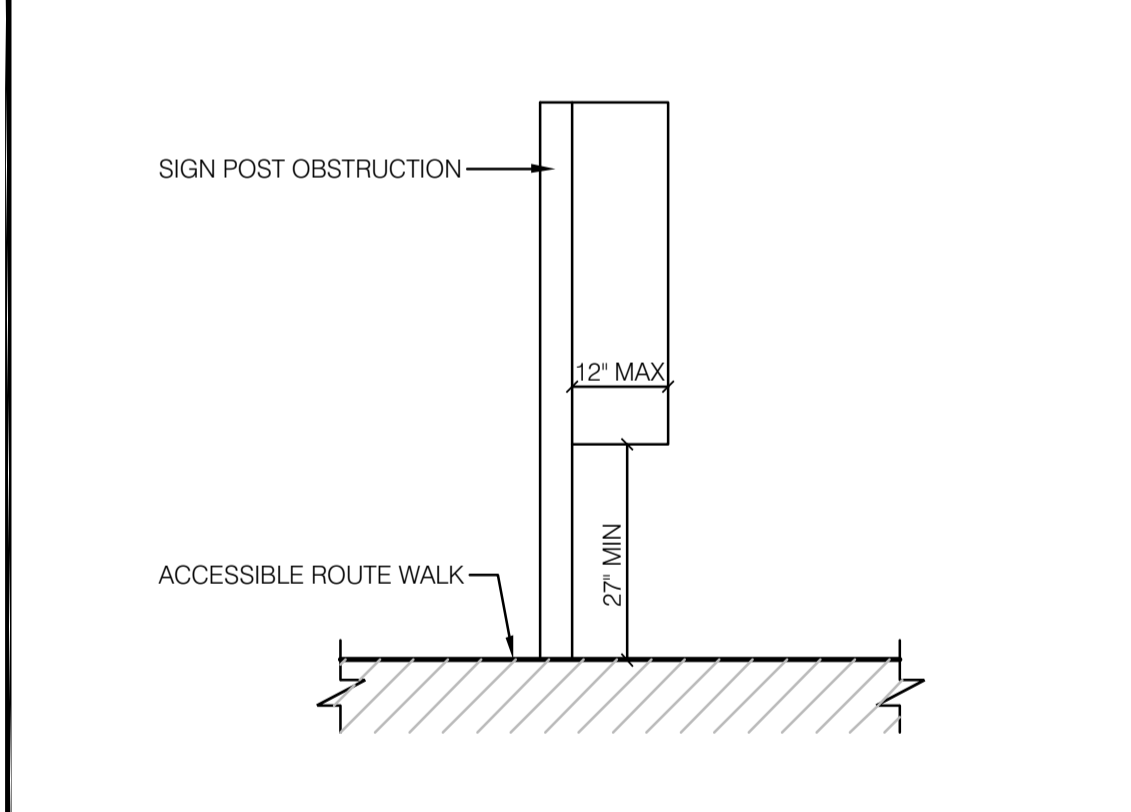
ACCESSIBLE URINAL 3/4" = 1'-0" **6**



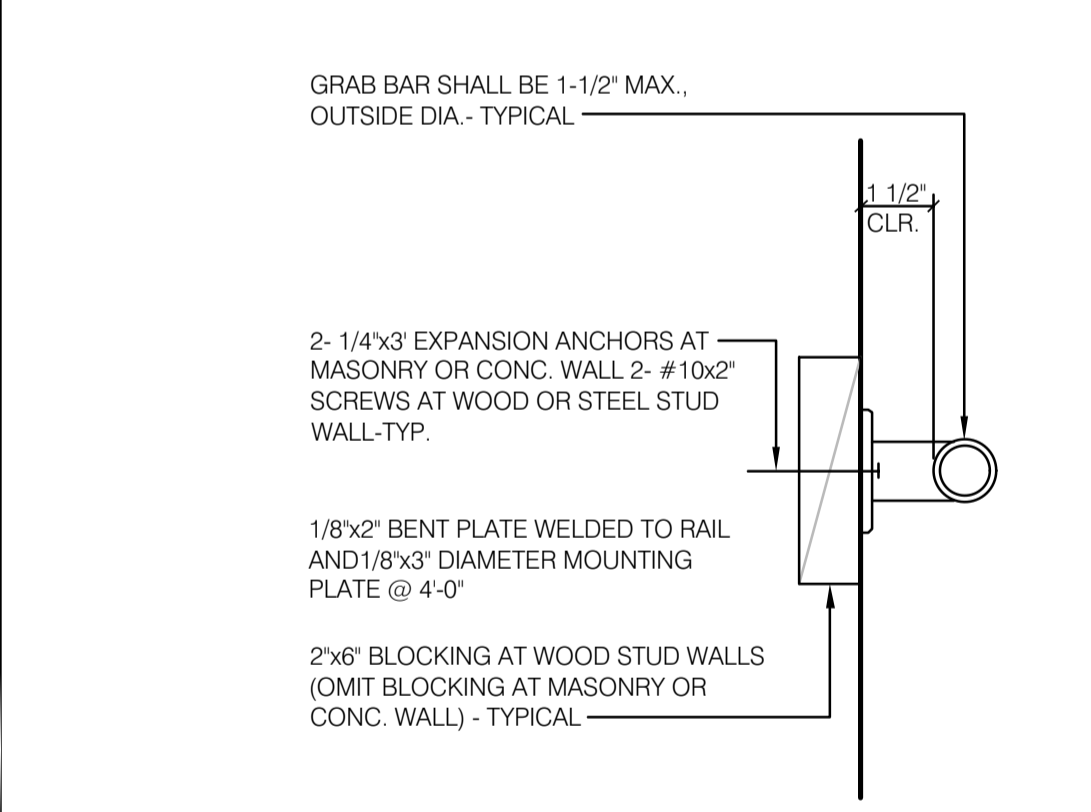
STANDARD TOILET STALL N.T.S. **2**



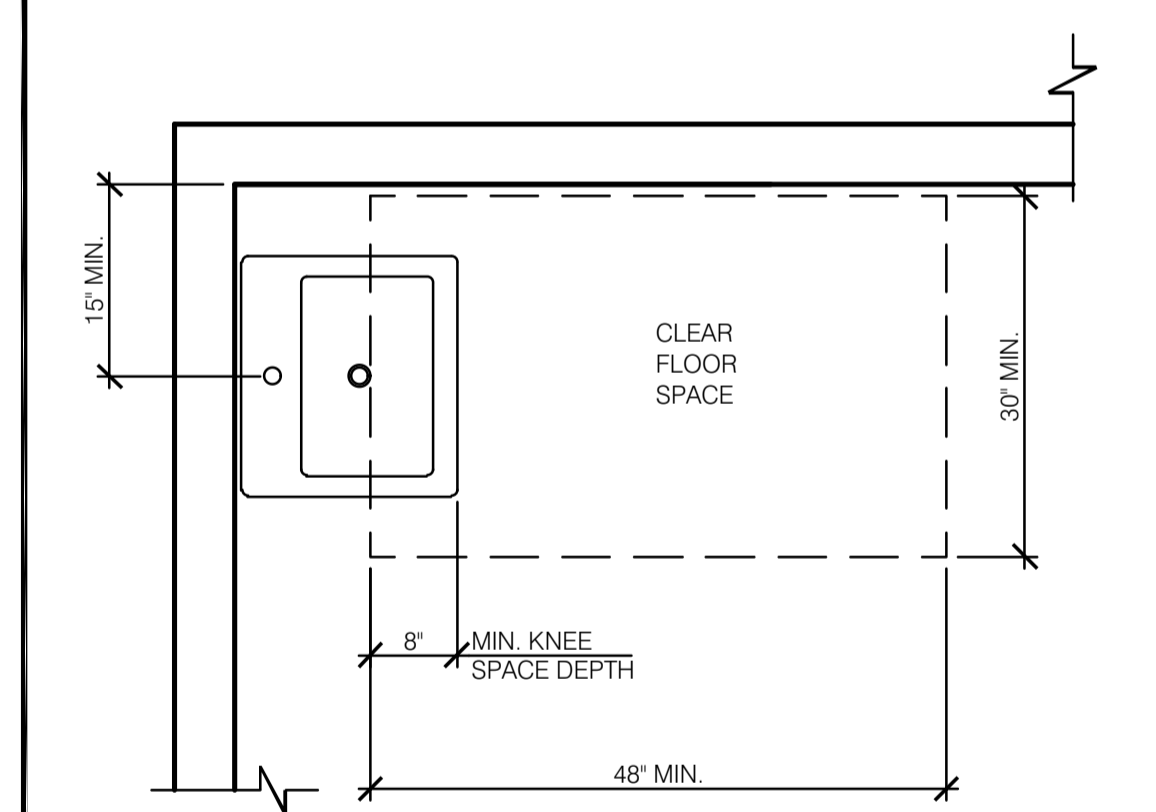
ACCESSIBLE RESTROOM DOORS N.T.S. **15**



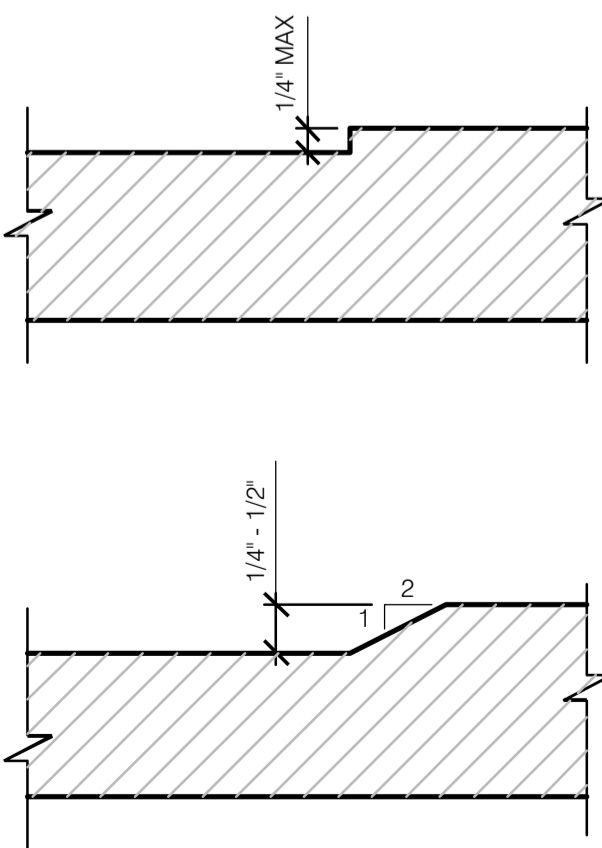
PROTRUDING HAZARDS 1/2" = 1'-0" **11**



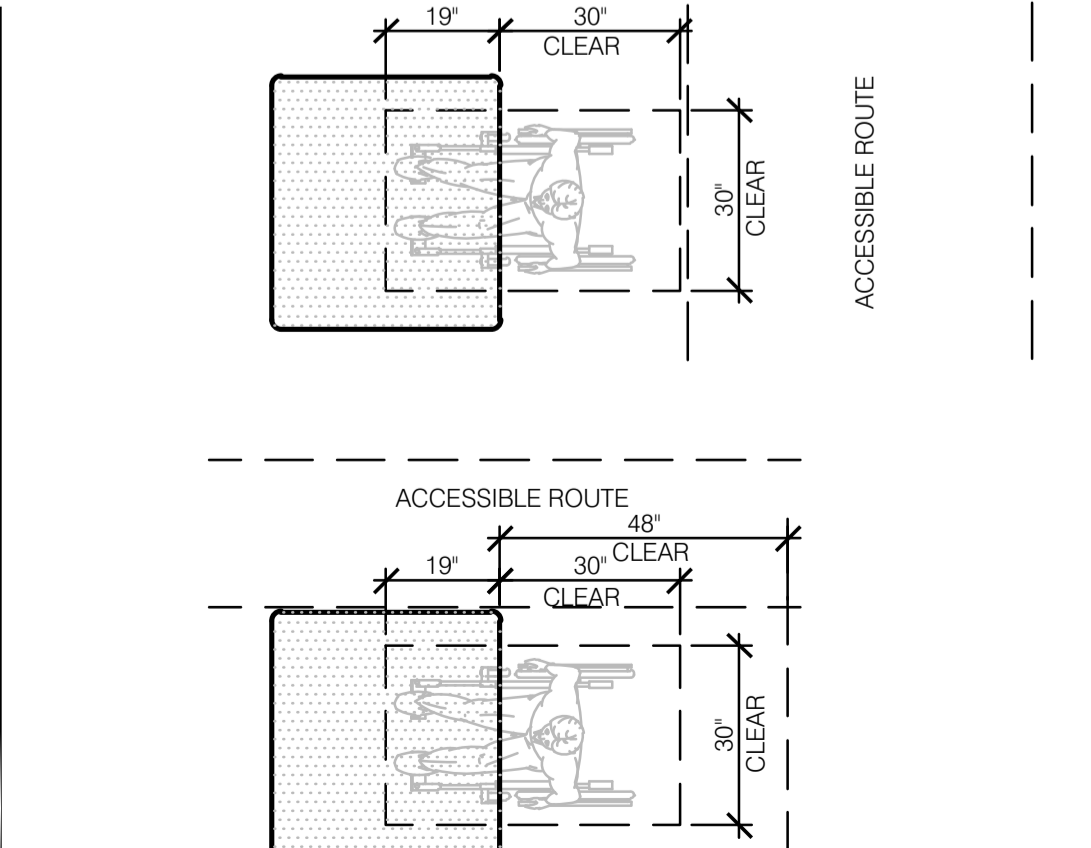
GRAB BAR 3" = 1'-0" **7**



ACCESSIBLE LAVATORY 3/4" = 1'-0" **3**



CHANGES IN LEVEL N.T.S. **12**



DINING ROOM SEATING CLEARANCES **8**

1. INDICATED DIMENSIONS, HEIGHTS, DEPTHS, AREAS AND OTHER GRAPHIC INFORMATION ARE PROVIDED AS MINIMUMS THAT MUST BE MAINTAINED. THESE MINIMUMS ARE BASED UPON YUM STANDARDS AND MAY EXCEED ADA REQUIREMENTS.

GENERAL NOTES **4**

LIS ARCHITECTURE ENGINEERING
 ENGINEERING OFFICE
 2572 West Store Road
 Aliso Viejo, CA 92606
 Phone: (949) 943-9244
 Facsimile: (949) 943-9828
 LAND INVESTMENT SERVICES, LLC
 AA 26002040 CA NO: 6853 LB1057
 ARCHITECTURE / ENGINEERING OFFICE
 2572 West Store Road
 Aliso Viejo, CA 92606
 Phone: (949) 943-9244
 Facsimile: (949) 943-9828



Digitally signed by Harold Hutter
 DN: c=US, o=Unaffiliated, ou=A01410C000001734EB2BC
 CF00000303, cn=Harold Hutter
 Date: 2022.03.31 15:24:28 -04'00'

HAROLD DANIEL HUTTER III
 FL REG. AR88913

PLAN SET REVISIONS:

△	
△	
△	
△	
△	
△	
△	
△	
△	

CONTRACT DATE: ...-2019
 BUILDING TYPE: Kb 30-19
 PLAN VERSION: 2018.A
 SITE NUMBER:
 ENTITY NUMBER:
 STORE NUMBER:
 LIS PROJECT: 2019-304

KFC
 3615 W SILVER SPRINGS BLVD.
 OCALA, FL

 Kb 30-19

ACCESSIBILITY REQUIREMENTS

ADA .1

PLOT DATE: 03/29/2022

NOT USED **20**

NOT USED N.T.S. **16**