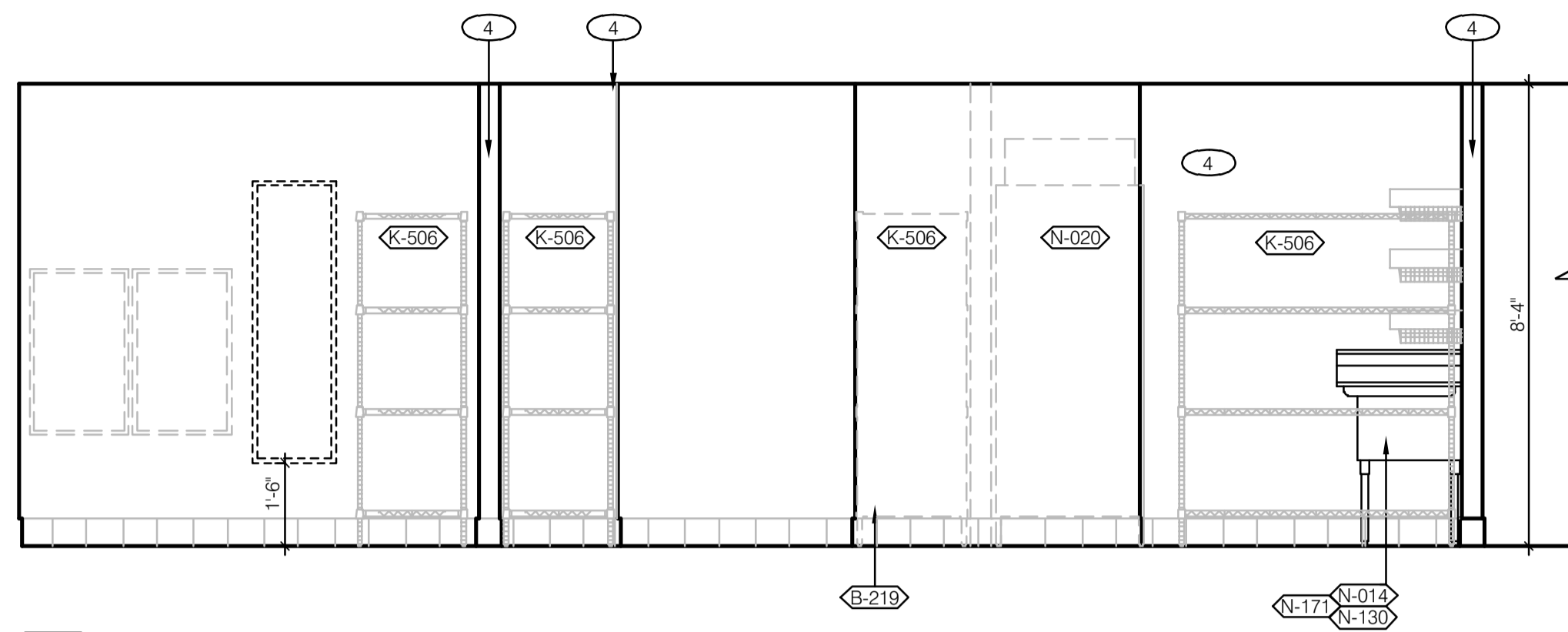
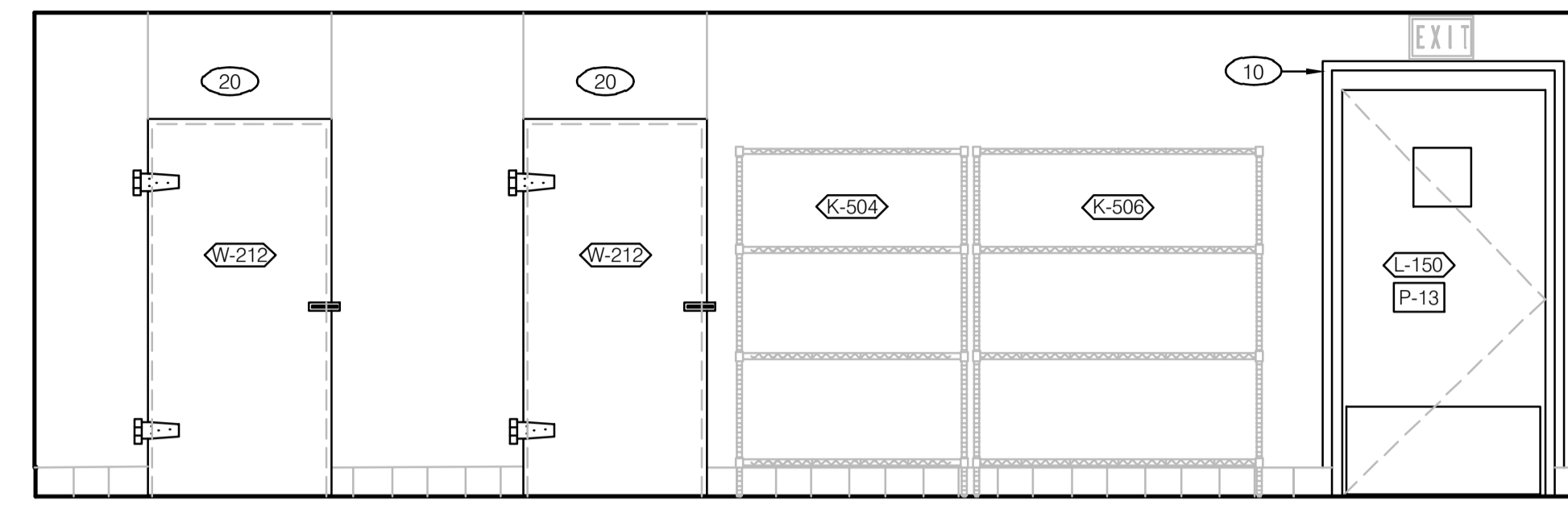


**REVIEWED**  
 For Code Compliance  
 City of Ocala Growth Management  
 BLD22-1101 09/07/22



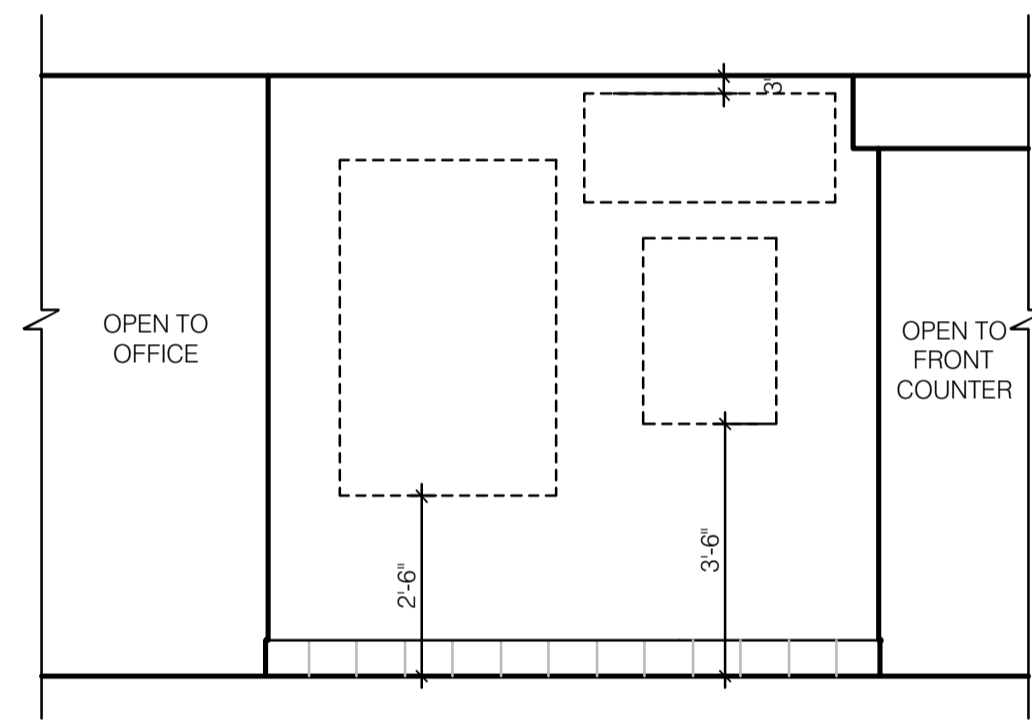
**13** UTILITY / DRY STOR. / WARE WASHING



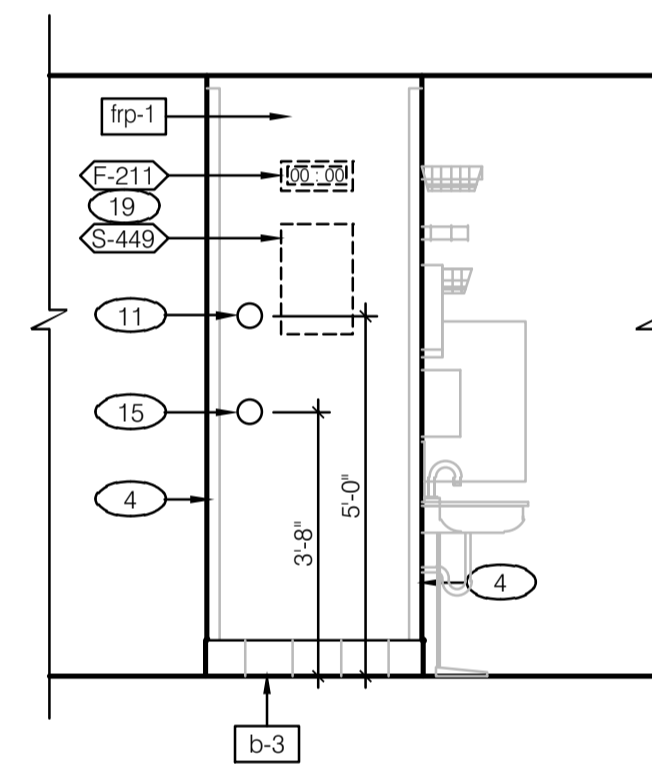
**12** COOLER / FREEZER BOX

**11** UTILITY

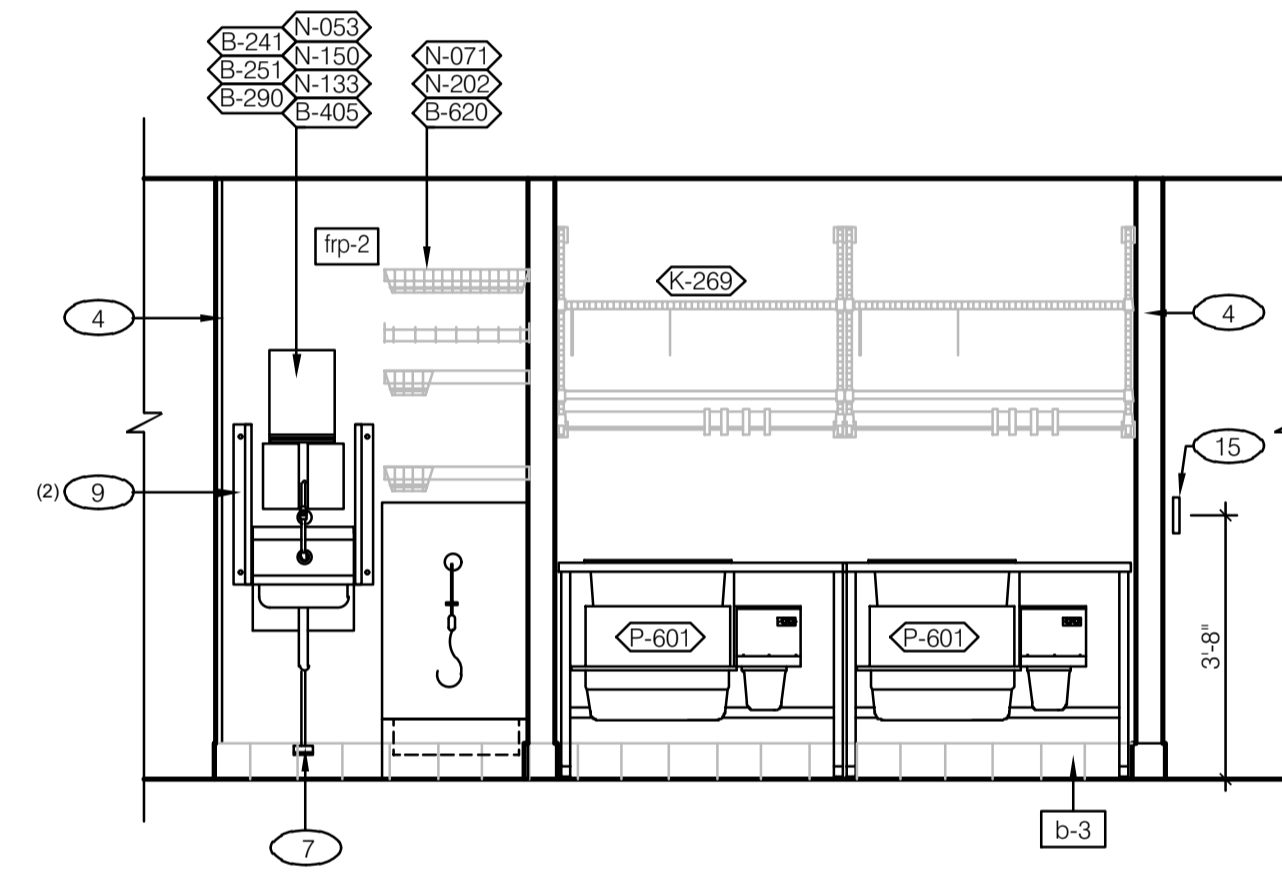
**KITCHEN ELEVATIONS 3/8" = 1'-0"**



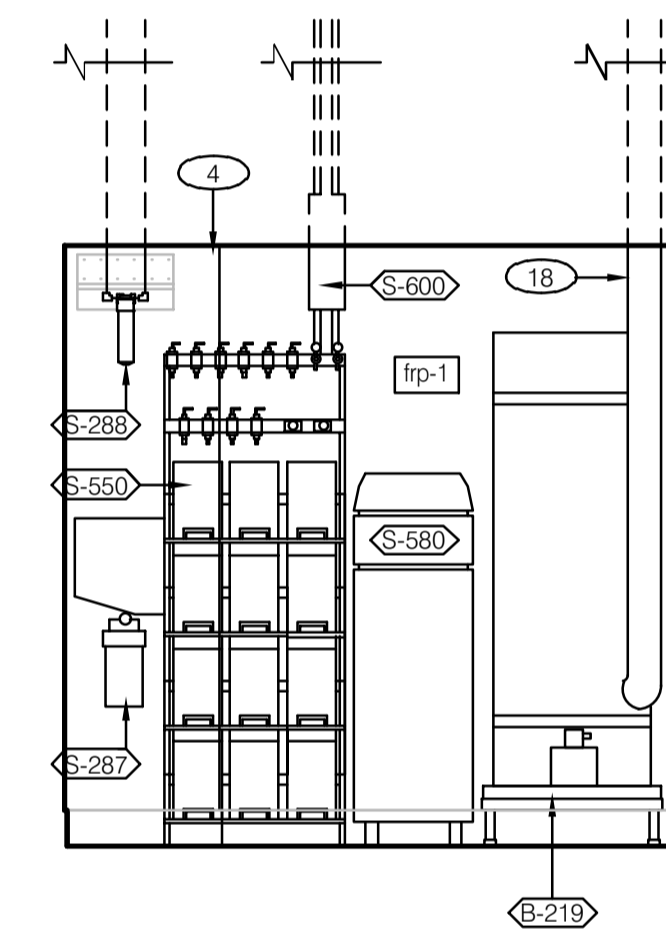
**18** ART WALL



**17** PREP END WALL



**15** PREP



**14** UTILITY

**KITCHEN ELEVATIONS 3/8" = 1'-0"**



Digitally signed by Harold Hutter  
 DN: c=US, o=Unaffiliated,  
 ou=A01410C000001734EB2BCCF  
 00000303, cn=Harold Hutter  
 Date: 2022.03.31 15:24:13 -04'00'

HAROLD DANIEL HUTTER III  
 FL. REG. AR88913

PLAN SET REVISIONS:


CONTRACT DATE: ...-2019  
 BUILDING TYPE: Kb 30-19  
 PLAN VERSION: 2018.A  
 SITE NUMBER:  
 ENTITY NUMBER:  
 STORE NUMBER:  
 LIS PROJECT: 2019-304

**KFC**  
 3615 W SILVER SPRINGS BLVD.  
 OCALA, FL



**INTERIOR ELEVATIONS KITCHEN**

**A8.3**

PLOT DATE: 03/29/2022

- ① 6" STAINLESS STEEL CHASE FOR ICE MACHINE REFRIGERANT LINES.
- ② ANSUL CABINET.
- ③ 8" x 8" OPENING FINISHED WITH FRP FOR SYRUP TUBES. SEE 4 / A6.3.
- ④ S.S. CORNER / END WALL CHANNEL GUARD, FULL HEIGHT. SEE 10 / A6.3.
- ⑤ HOLD-UP BUTTON; SEE E5.0.
- ⑥ 16" W x 4" D S.S. CHASE. EXTEND 2" ABOVE CEILING; BY G.C.
- ⑦ HAND SINK FOOT PEDAL. SEE 3 / P6.0.
- ⑧ EDGE OF 20 GAGE STAINLESS STEEL PANEL BEHIND HOOD. COORDINATE EXTENTS OF PANEL BEYOND HOOD WITH LOCAL CODE REQUIREMENTS.
- ⑨ S.S. SPLASH GUARD. SEE DETAIL 7 / A6.3.
- ⑩ S.S. CORNER GUARD at SERVICE DOOR HEAD and JAMB; SEE 13 / A6.1.
- ⑪ THERMOSTAT REMOTE SENSOR; SEE KEY NOTE 10, SHEET M2.0.
- ⑫ EQUIPMENT POWERED VIA CEILING-MOUNTED RECEPTACLE; SEE E3.0.
- ⑬ GAS RISER. SEE KEYNOTE 18 / P3.0.
- ⑭ MOUNT SAUCE DISPENSER ON SIDE OF STORAGE SHELF.
- ⑮ ANSUL PULL STATION.
- ⑯ S.S. END SKIRT.
- ⑰ SECURITY SYSTEM KEYPAD; SEE E5.0.
- ⑱ WATER HEATER VENT; SEE PLUMBING DRAWINGS.
- ⑲ PRODUCT TIME CLOCK and TIME TAG HOLDER; VERIFY MOUNTING HEIGHT w/ OWNER.
- ⑳ WALK-IN COOLER / FREEZER BOX.

**KITCHEN ELEVATIONS 3/8" = 1'-0"**

\*\*ALL KEYNOTES NOT ON THIS SHEET

**KEY NOTES**

**A**