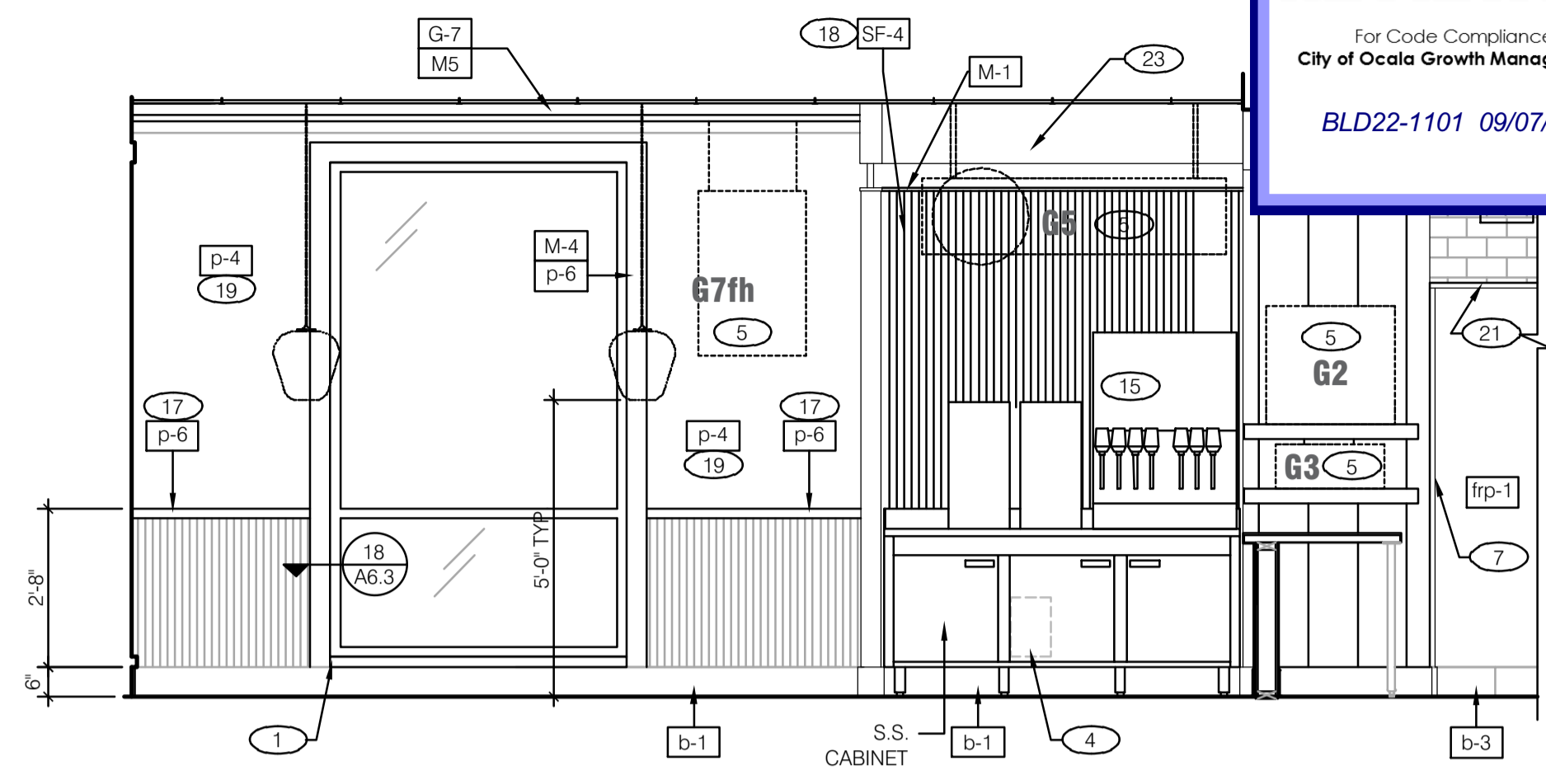
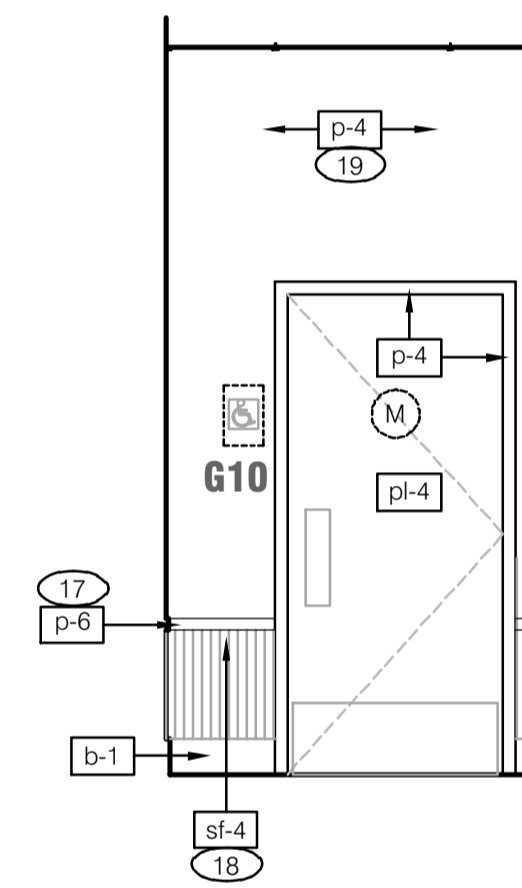


DINING ROOM 3/8" = 1'-0" 2

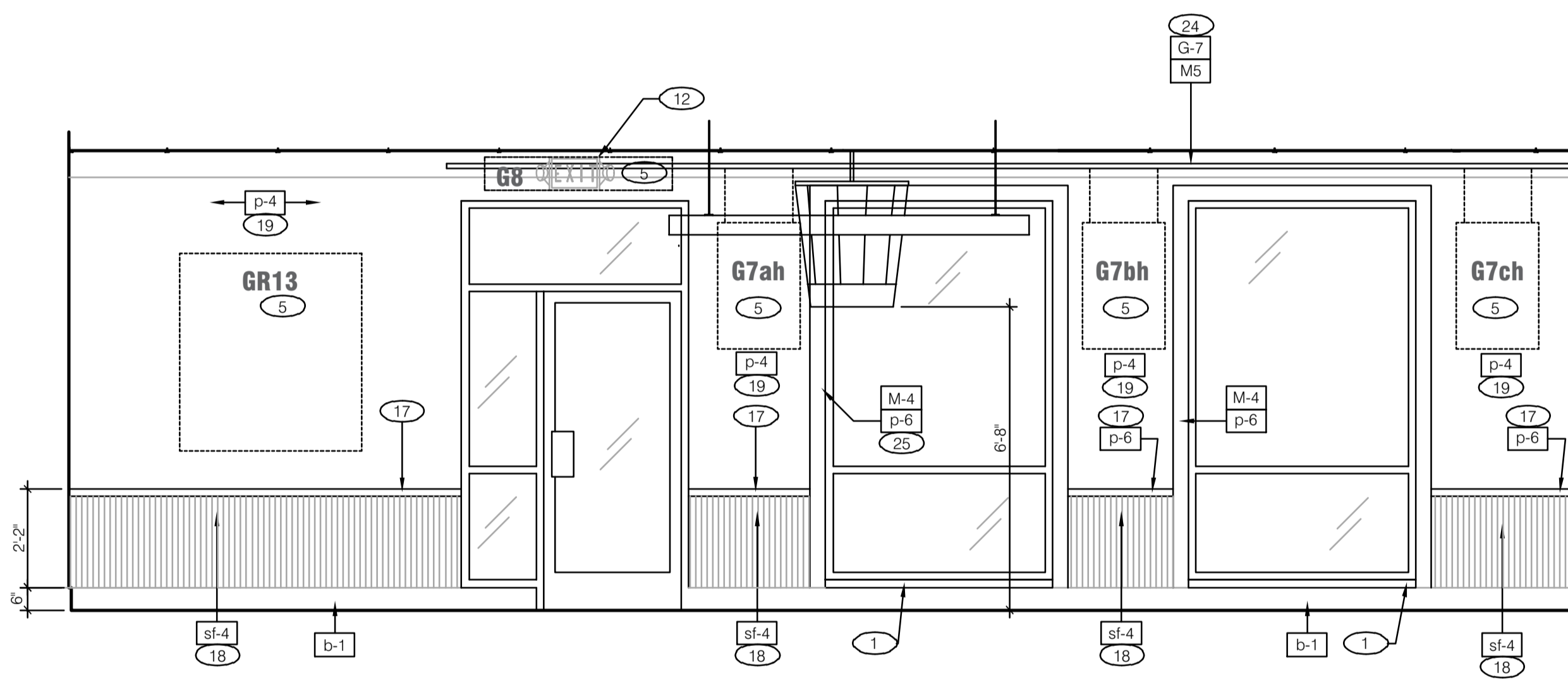


REVIEWED
For Code Compliance
City of Ocala Growth Management
BLD22-1101 09/07/22

DINING ROOM 3/8" = 1'-0" 1



DINING ROOM 3/8" = 1'-0" 5

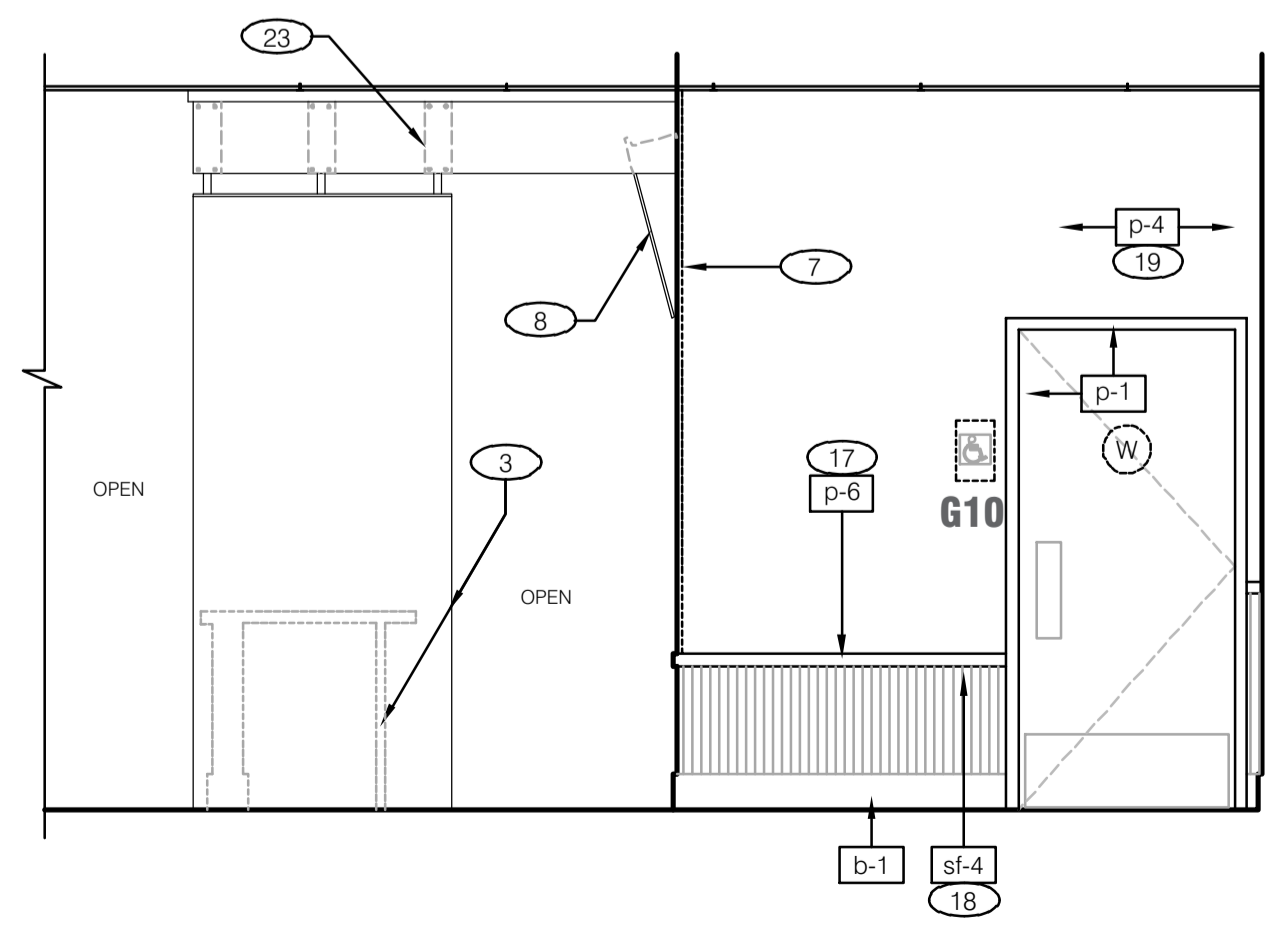


DINING ROOM 3/8" = 1'-0" 3

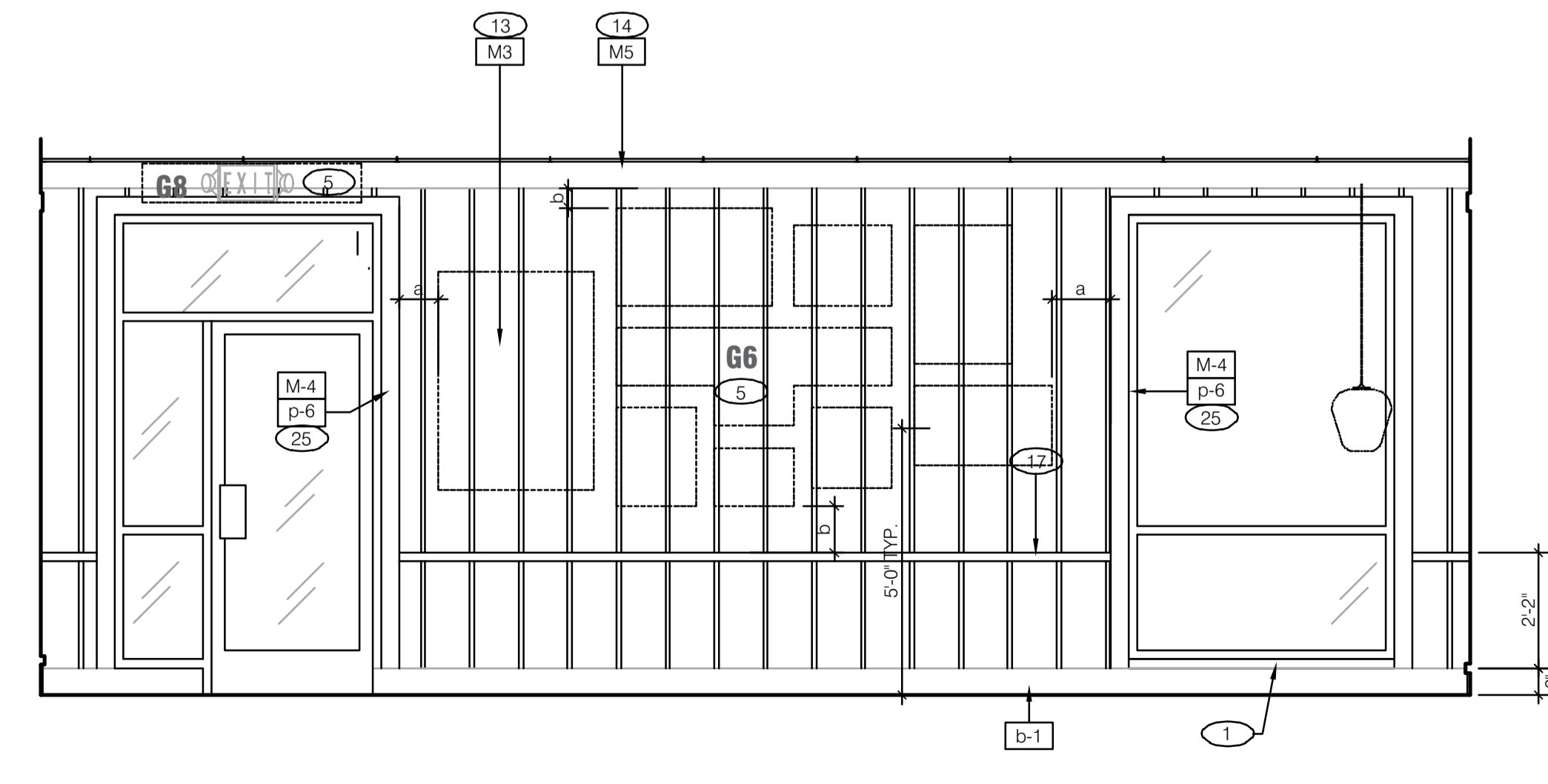
GENERAL NOTE:
1. PROVIDE CLEAR SILICONE CAULK WHERE ALL FIXED AND BUILT-IN COUNTERTOPS / EQUIPMENT ABUT WALL SURFACES. WHERE GAP BETWEEN WALL AND COUNTER SPLASH / EQUIPMENT EXCEEDS 1/4", PROVIDE S.S. CLOSURE ANGLE.

- KEY NOTES:**
1. SOLID SURFACE WINDOW SILL. SEE 4 / A6.1 (ON WALL); 4 / A6.2 (ON CURB).
 2. H.C. SIGNAGE. MOUNT @ 5'-0" A.F.F. TO CENTER OF SIGN.
 3. DECOR WALL/CUSTOM MILLWORK BY VENDOR.
 4. 8" x 12" OPENING FOR SYRUP / FILTERED WATER TUBE BUNDLES. SEE 4 / A6.3.
 5. REFER TO ARTWORK SCHEDULE ON SHEET A7.2.
 6. KOROSEAL 3/4" CORNER GUARD; KFC RED. SEE SHEET A7.2.
 7. STAINLESS STEEL CORNER / END WALL CHANNEL GUARD.
 8. MENU BOARD; SEE SCOPE OF WORK.
 9. LAMINATE WALL COVERING PANEL TRIM. SEE 18 / A6.1.
 10. MENUBOARD BULKHEAD. SEE DETAIL 1 / A6.3.
 11. KNEEWALL BY GENERAL CONTRACTOR. SEE 14 and 18 / A6.1.
 12. EMERGENCY / EXIT LIGHTING. SEE SHEET E4.0.
 13. NEW DECORATIVE WALL PANELING SYSTEM.
 14. NEW PRE-FINISHED WOOD TRIM TO MATCH DECORATIVE WALL PANELING BELOW. HOLD 1/2" OFF CEILING.
 15. DRINK STATION, PEPSI MACHINE; COORDINATE REACH HEIGHT / DEPTH WITH ADA-1.
 16. SECURITY MONITOR / PACK MONITOR; REFER TO EQUIPMENT PLAN A2.0. SEE SCOPE OF WORK.
 17. NEW PRE-PRIMED CHAIR RAIL TO BE PAINTED.
 18. NEW WAINSCOT.
 19. WALLS TO HAVE ORANGE PEEL TEXTURE ABOVE CHAIR RAIL.
 20. POS EQUIPMENT.
 21. STAINLESS STEEL HEADER CAP ON BULKHEAD.
 22. NEW SUSPENDED BUCKET GRAPHIC ELEMENT.
 23. NEW DECOR BEAM AND BRACKET BY VENDOR.
 24. MONITOR (SELECTION/SIZE BY OTHERS)

GENERAL NOTE + KEY NOTES A



DINING ROOM 3/8" = 1'-0" 6



DINING ROOM 3/8" = 1'-0" 4

ARCHITECTURE
ENGINEERING

LIS
LAND INVESTMENT SERVICES, LLC
AA 26002040 CA NO: 6853 LB1057
ARCHITECTURE / ENGINEERING OFFICE
2572 West Store Road #26
Ocala, FL 32765
Phone: (321) 244-0402
Fax: (321) 244-9419
focsimile: (321) 244-9828



Digitally signed by Harold Hutter
DN: c=US, o=Unaffiliated,
ou=A01410C00001734EB2BCC
F0000303, cn=Harold Hutter
Date: 2022.03.31 15:23:24 -0400

HAROLD DANIEL HUTTER III
FL REG. AR88913

PLAN SET REVISIONS:

△	
△	
△	
△	
△	
△	
△	
△	

CONTRACT DATE: ...-2019
BUILDING TYPE: Kb 30-19
PLAN VERSION: 2018.A
SITE NUMBER:
ENTITY NUMBER:
STORE NUMBER:
LIS PROJECT: 2019-304

KFC
3615 W SILVER SPRINGS BLVD.
OCALA, FL



**INTERIOR
ELEVATIONS -
DINING ROOM**

A8.0

PLOT DATE: 03/29/2022