

REVIEWED

For Code Compliance
City of Ocala Growth Management

BLD22-1101 09/07/22

ENGINEERING OFFICE
21430 Palmetto Branch Blvd.
Altoona, Fla. 33920
Phone: (239) 693-9244
faxsimile: (239) 693-9828

ARCHITECTURE
ENGINEERING

LIS

LAND INVESTMENT SERVICES, LLC
AA 26002040 CA NO: 6853 LB1057
ARCHITECTURE / ENGINEERING OFFICE
572 West Store Road, Suite 205
Sarasota, FL 34236
Phone: (321) 244-0402
faxsimile: (321) 244-9419



Digitally signed by Harold Hutter
DN: c=US, o=Unaffiliated,
ou=A01410C000001734EB2BCCF
00000303, cn=Harold Hutter
Date: 2022.03.31 15:22:50 -04'00'

HAROLD DANIEL HUTTER III
FL. REG. AR98913

PLAN SET REVISIONS:

CONTRACT DATE: ...-2019

BUILDING TYPE: Kb 30-19

PLAN VERSION: 2018.A

SITE NUMBER:

ENTITY NUMBER:

STORE NUMBER:

LIS PROJECT: 2019-304

KFC

3615 W SILVER SPRINGS BLVD.
OCALA, FL

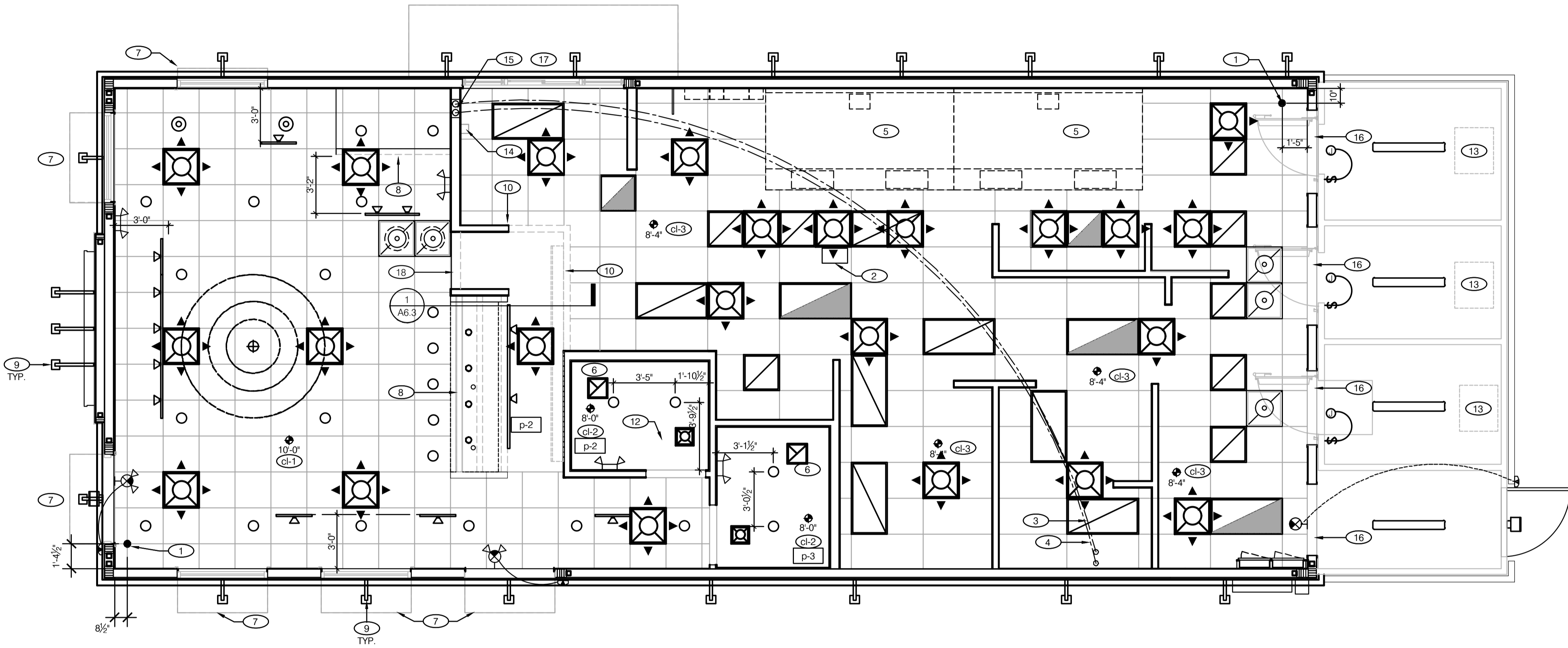


Kb 30-19

**REFLECTED
CEILING
PLAN**

A7.1

PLOT DATE: 03/29/2022



REFLECTED CEILING PLAN 1/4" = 1'-0" **A**

	2'-0" x 2'-0" LED LIGHT FIXTURE		EXTERIOR WALL FIXTURE
	2'-0" x 4'-0" LED LIGHT FIXTURE		SPEAKER
	DOWNLIGHT @ WALK-IN (BY WALK-IN MFR.)		12" EXHAUST FAN
	PENDANT FIXTURE		HVAC RETURN GRILLE
	DOWNLIGHT		HVAC SUPPLY DIFFUSER
	EMERGENCY LIGHTS		HVAC SUPPLY DIFFUSER
	EXIT LIGHT (WALL MOUNTED)		HVAC PERFORATED SUPPLY DIFFUSER
	EXIT LIGHT (CEILING MOUNTED)		BACK DOOR SECURITY STROBE LIGHT
	DIRECTIONAL FIXTURE TRACK MOUNTED		DIRECTIONAL FIXTURE CEILING MOUNTED

NOT USED **F**

CEILING SYMBOL LEGEND **E**

DIMENSIONS:
A. ALL DIMENSIONS ARE FROM FACE OF FINISH WALL TO C. OF FIXTURES; U.O.N.

CEILING FINISHES:
A. REFER TO ROOM FINISH SCHEDULE (SHT A7.2) FOR CLG. FINISHES.

SUSPENDED CEILING:
A. ACOUSTICAL PANEL INSTALLATION: INSTALL ACOUSTICAL PANELS WITH EDGES IN CLOSE CONTACT WITH METAL SUPPORTS AND IN TRUE ALIGNMENT.
B. ALLOWABLE VARIATIONS FROM FLAT AND LEVEL SURFACE: 1/8" IN 10'-0" MAX.
C. ALLOWABLE VARIATIONS FROM PLUMB OF GRID MEMBERS: AS CAUSED BY ECCENTRIC LOADS, 2" MAX.
D. INSTALL SYSTEM AFTER MAJOR ABOVE CLG. WORK IS COMPLETE. COORD LOCATIONS OF HANGERS WITH RELATED WORK.
E. SEE SPECS FOR ADDITIONAL INFORMATION.

GYPSON BOARD CEILING:
A. SUBSTRATE SHALL BE 1/2" THICK GYP BD.

ELECTRICAL:
A. SEE ELECT. DWGS. FOR FIXTURE SCHED.

GENERAL NOTES:
A. PROVIDE ESCUTCHEON PLATES AND SEALANT AT ALL PENETRATIONS INTO WALLS, CEILINGS, AND FLOORS. DO NOT USE CAULKS OR EXPANDING FOAM FOR SEALANT.

REFLECTED CEILING PLAN NOTES **D**

- 1 CEILING GRID STARTING POINT.
- 2 PACK LINE S.S. VERTICAL CHASE THRU CEILING; BY GENERAL CONTRACTOR.
- 3 SYRUP / FILTERED WATER TUBE BUNDLES FOR DRINK SYSTEM. SEE DETAILS 2 and 3 / A6.3. SEE SCOPE OF WORK.
- 4 6" DIA PVC STUB THROUGH CEILING, SEE DETAIL 3 / A6.3.
- 5 HOOD. SEE <E-241> SHEET A2.1.
- 6 SEE AIR DEVICE SCHEDULE FOR ROUGH FRAMING OPENINGS (TYP. AT RESTROOMS).
- 7 AWNING INSTALLED BY SIGN VENDOR; SEE SCOPE OF WORK.
- 8 FAUX BEAM BY VENDER REFER TO 1 / A6.3 FOR ASSEMBLY DETAILS.
- 9 EXTERIOR WALL LIGHT FIXTURES, SEE ELEVATIONS AND ELECT. DWGS.
- 10 BOTTOM OF MENU BOARD BULKHEAD AT 7'-0" A.F.F. SEE DETAIL 1 / A6.3.
- 11 SPEAKER.
- 12 BUCKET PENDANT LIGHTING & SUSPENDED RING ELEMENT

- 13 FAN COIL ABOVE.
- 14 6" X 6" STAINLESS STEEL CHASE ALONG WALL FOR ICE MACHINE REFRIGERANT LINES: CEILING TO TOP OF ICE MACHINE; BY GENERAL CONTRACTOR.
- 15 SYRUP / FILTERED WATER TUBE BUNDLES CHASE IN WALL. SEE DETAIL 4 / A6.3.
- 16 BOTTOM OF BULKHEAD AT 7'-0" A.F.F. 1/2" GYP. BOARD OVER 6" METAL FRAMING. REFER TO 1 / A6.3 FOR SIMILAR ASSEMBLY DETAILS.
- 17 CANOPY INSTALLED BY SIGN VENDOR
- 18 COORDINATE HEIGHT OF BULKHEAD WITH PICK-UP SHELF

KEY NOTES **B**