

REVIEWED

For Code Compliance
City of Ocala Growth Management

BLD22-1101 09/07/22

ENGINEERING OFFICE
1140 Palmetto Beach Blvd.
Alicia F. Smith, P.E.
Phone: (386) 693-9244
facsimile: (386) 693-9828

ARCHITECTURE
ENGINEERING

LIS

LAND INVESTMENT SERVICES, LLC
AA 26002040 CA NO: 6853 LB1037
ARCHITECTURE / ENGINEERING OFFICE
2572 West State Road 426
Alicia F. Smith, P.E.
Phone: (321) 944-0402
facsimile: (321) 244-9419



Digitally signed by Harold Hutter
DN: c=US, o=Unaffiliated,
ou=A01410C00001734EB2BCC
F00000303, cn=Harold Hutter
Date: 2022.03.31 15:22:33
-04'00'
HAROLD DANIEL HUTTER III
FL. REG. AR8913

PLAN SET REVISIONS:

CONTRACT DATE:	...-2019
BUILDING TYPE:	Kb 30-19
PLAN VERSION:	2018 A
SITE NUMBER:	
ENTITY NUMBER:	
STORE NUMBER:	
LIS PROJECT:	2019-304

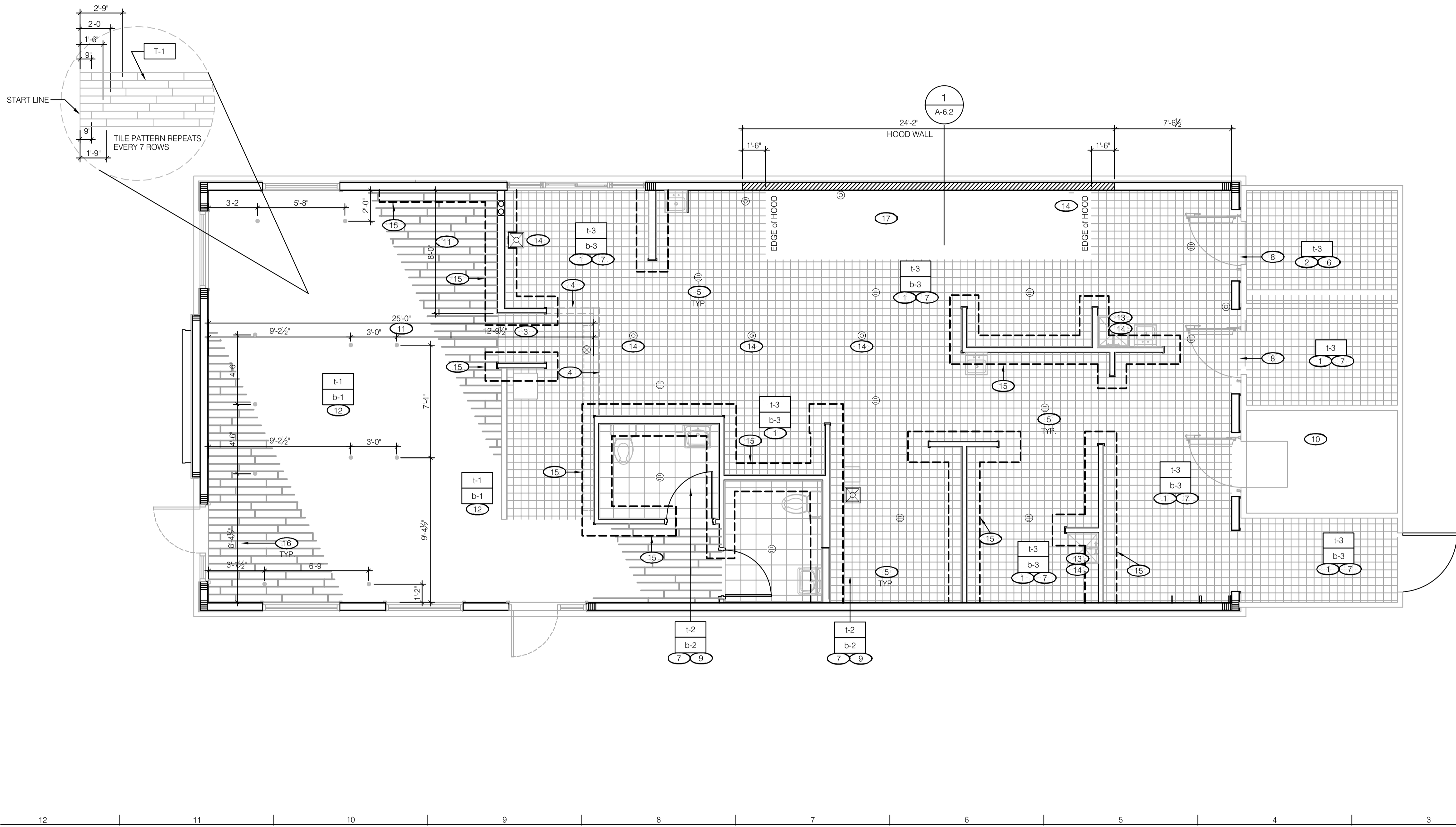
KFC
3615 W SILVER SPRINGS BLVD.
OCALA, FL



FLOOR FINISH PLAN

A7.0

PLOT DATE: 03/29/2022



FLOOR FINISH PLAN 1/4" = 1'-0" **A**

- A. DENOTES FINISH MATERIAL. REFER TO SHT A7.2 FOR FINISHES.
- B. TILE JOINTS (U.O.N.):
1. QUARRY FLOOR TILE : 1/4"
2. GLAZED WALL TILE : 1/8"
3. BASE, TRIM AND ACCESSORIES : MATCH ADJOINING TILE UNITS
- C. TILE INSTALLATIONS REQUIRE MANUFACTURERS STANDARD MOLDED CORNERS AT BOTH INSIDE AND OUTSIDE CORNERS, AND BULLNOSE AT TOP OF TILE WAINSCOT (RESTROOM WALL).
- D. ALL BASE TILE SHALL BE SANITARY COVE STYLE WITH 3/8" MIN RADIUS, U.O.N.
- E. SEE SCOPE OF WORK FOR RESPONSIBILITIES.
- F. PROVIDE CLEAR SILICONE CAULK WHERE FRP STOPS AT TOP OF COVE BASE.
- G. TILE CHIPPING AROUND CORE DRILL HOLES FOR SEATING WILL NOT BE ACCEPTED.

- 1 6" SANITARY COVE TILE BASE (BACK OF HOUSE). SEE DETAILS 17, 20 / A6.2.
- 2 PROVIDE FLOOR TILE INSIDE WALK-IN COOLER & STORAGE. FLOAT FLOOR TILE IN COOLERS TO DRAIN TO KITCHEN. COORDINATE WITH WALK-IN WALL CONFIGURATION.
- 3 PLATFORM FOR SAFE. SEE DETAIL 9 / A6.3.
- 4 FLOOR TILE SHALL TRANSITION FROM DINING ROOM TO KITCHEN SHALL BE FLUSH.
- 5 CUT / SLOPE TILE TO DRAIN.
- 6 METAL BASE IN COOLER; SEE SCOPE OF WORK AND DETAIL E, THIS SHEET.
- 7 REFER TO STRUCTURAL DRAWINGS FOR CONCRETE FLOOR SLOPES AROUND FLOOR DRAINS / SLOT DRAIN.
- 8 FLOAT FLOOR TILE TO MEET COOLER & STORAGE FLOORS FLUSH. COORDINATE WITH COOLER & STORAGE THRESHOLD INSTALLATION.
- 9 SANITARY COVE TILE BASE (RESTROOMS). SEE DETAIL 18 / A6.2.
- 10 FACTORY FLOOR FINISH (GALV. STL.) w/ INTEGRAL COVE BASE AND BUILT-IN INTERNAL RAMP IN WALK-IN FREEZER.
- 11 DIMENSION STRING REPRESENTS LINE OF F6H -to- B6H FLOOR TILE TRANSITION.
- 12 6" COVE TILE BASE (DINING ROOM). SEE DETAILS 8, 16, 19 / A6.2.

- 13 OMIT TILE AND BASE AT MOP SINK LOCATIONS.
- 14 OMIT TILE AT FLOOR SINK / HUB DRAIN LOCATIONS.
- 15 REDGUARD WATERPROOFING MEMBRANE, TYPICAL AT BASE OF INTERIOR PARTITION WALLS; ROLLER, TROWEL OR SPRAY APPLIED. COORDINATE INSTALLATION WITH FLOOR / BASE TILE MFR.
- 9" HORIZONTAL APPLICATION / 9" VERTICAL APPLICATION; UNLESS NOTED OTHERWISE.
- NOTES:**
- A. ELIMINATE VERTICAL APPLICATION AT COOLER / FREEZER PANEL WALLS AND MOP SINK LOCATIONS; i.e., NO CERAMIC BASE TILE and/or NO FRP WALL FINISH. SEE SHEETS A8.1, A8.2 and A8.3.
- B. TERMINATE VERTICAL APPLICATION 6" ABOVE SLAB AT DINING ROOM SIDE OF APPLICABLE PARTITION WALLS; i.e., NO WAINSCOT WALL FINISH and/or NO WALL TILE FINISH. SEE SHEET A8.0.
- 16 CLIP DOWN LOCATIONS FOR SEATING / DECOR PACKAGE. PRIOR TO PERFORMING WORK. SEE SHEET A2.0.
- 17 ALUMINUM FLOOR PLATE. SEE F/A7.0 FOR SECTION DETAIL. SIZE TO MATCH HOOD ABOVE FOR FRONT AND 2 SIDES. EXTEND REAR END TO WALL BEHIND.

NOT USED N.T.S. **F**

NOT USED N.T.S. **E**

FINISH NOTES **D**

KEY NOTES **B**