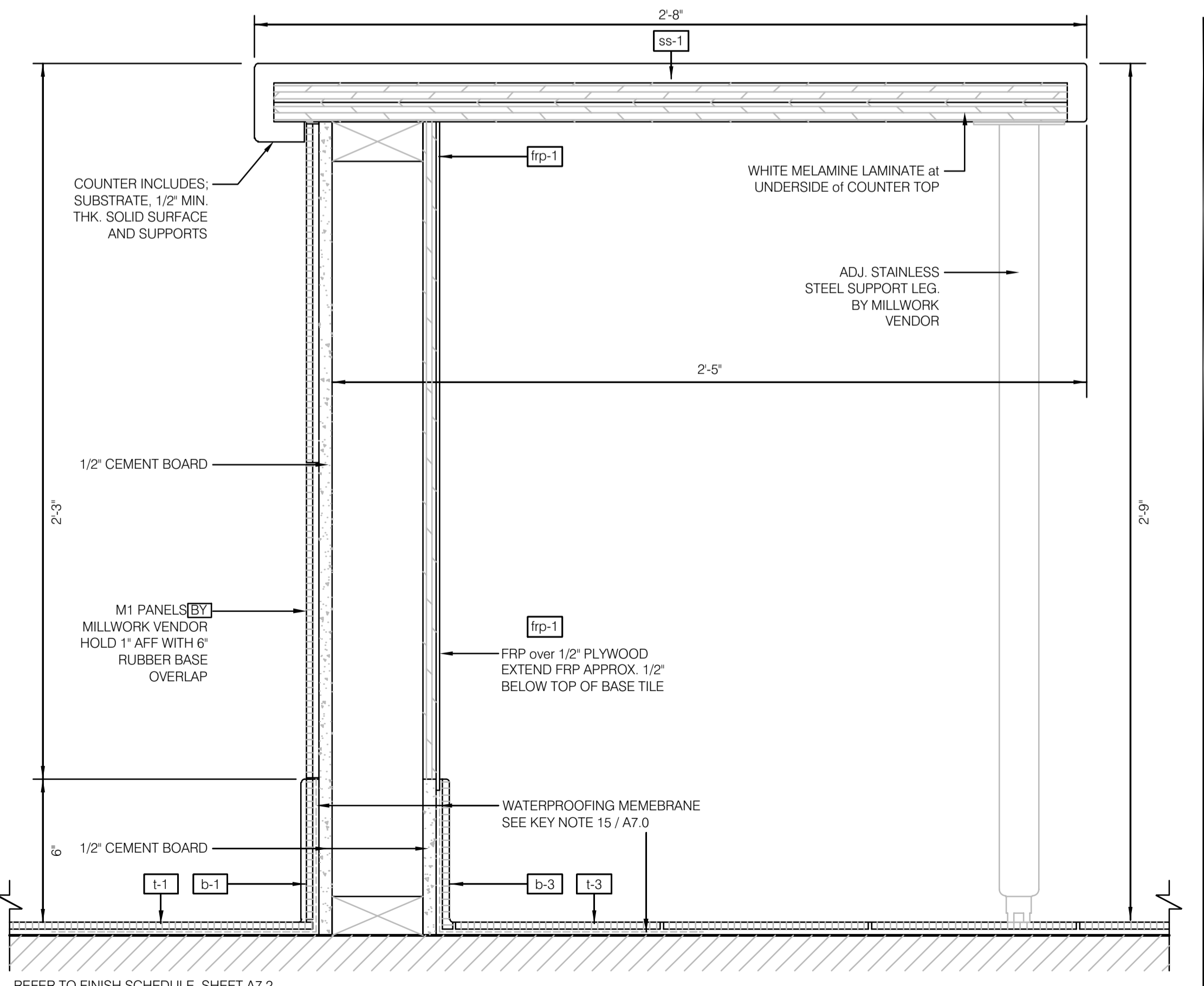
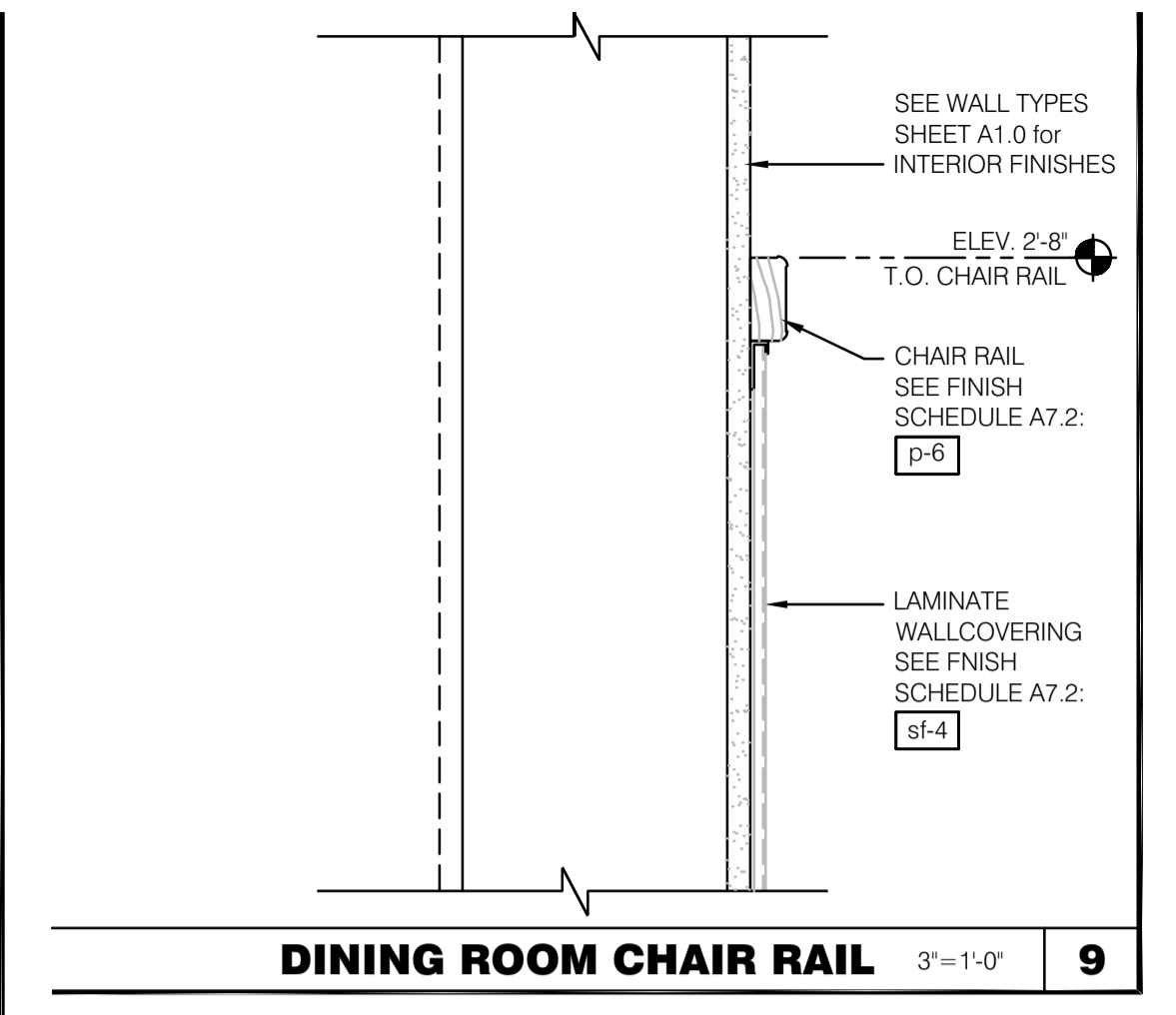


REFER TO FINISH SCHEDULE, SHEET A7.2: **SS-1**

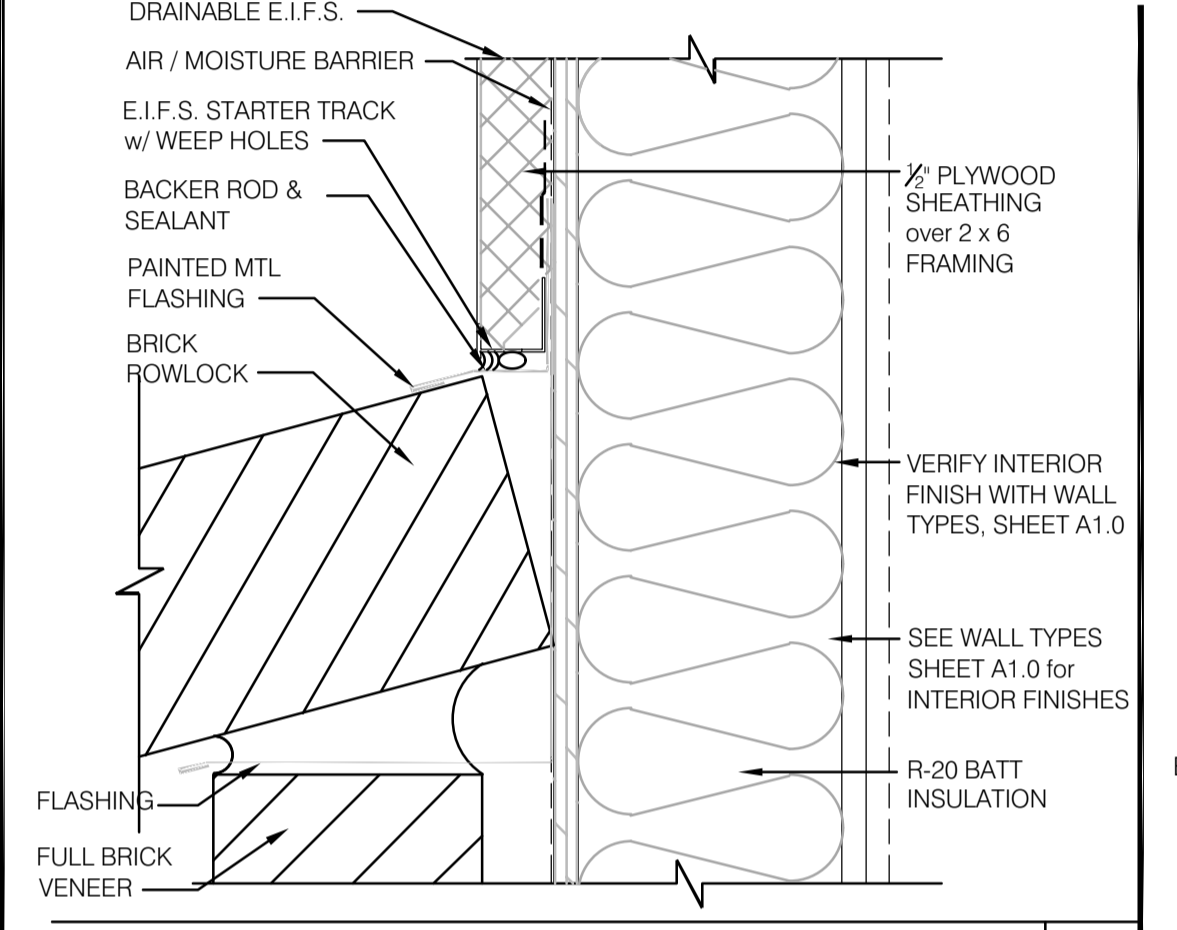
CUSTOMER COUNTER PLAN 3/4" = 1'-0" **14**



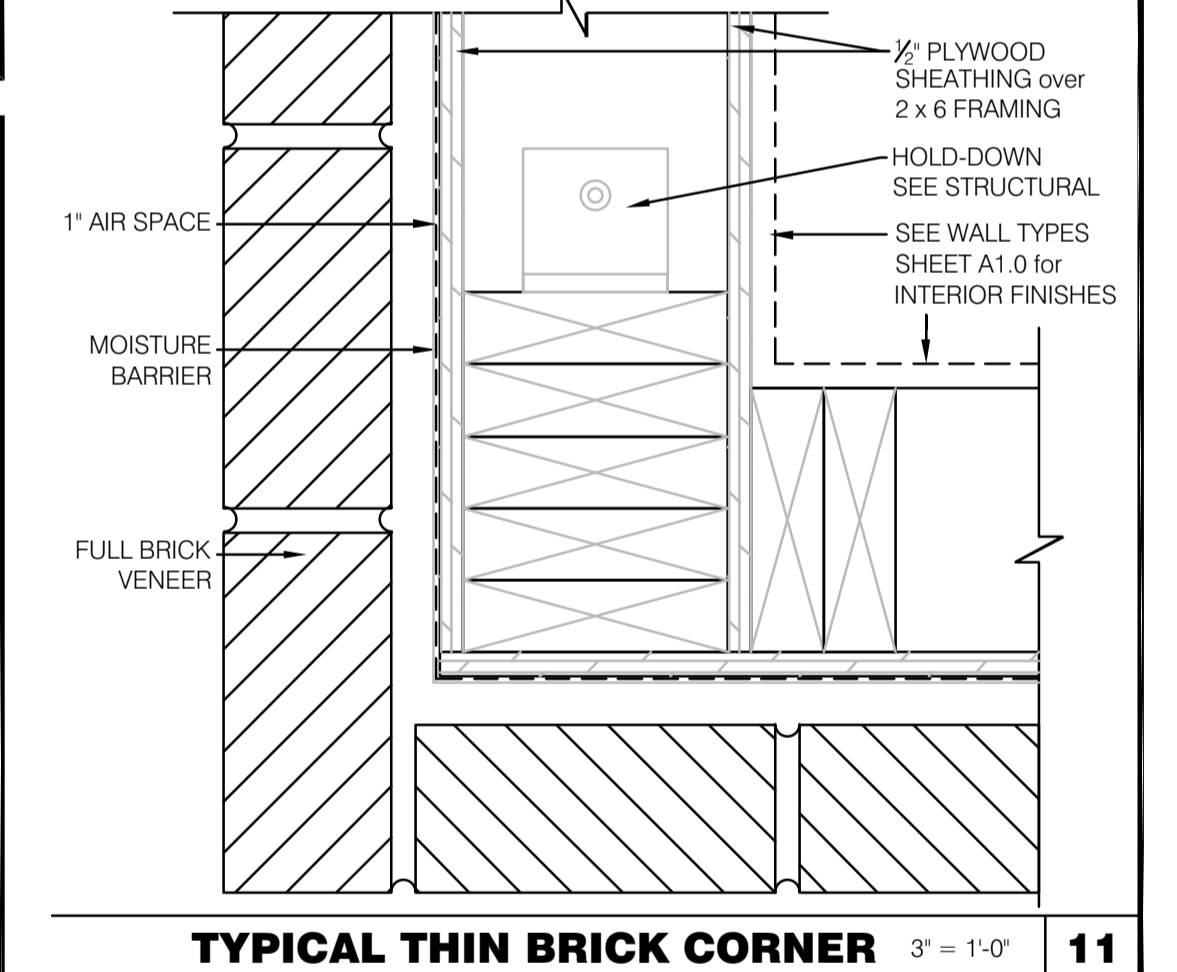
TYPICAL CUSTOMER COUNTER SECTION 3/8" = 1'-0" **18**



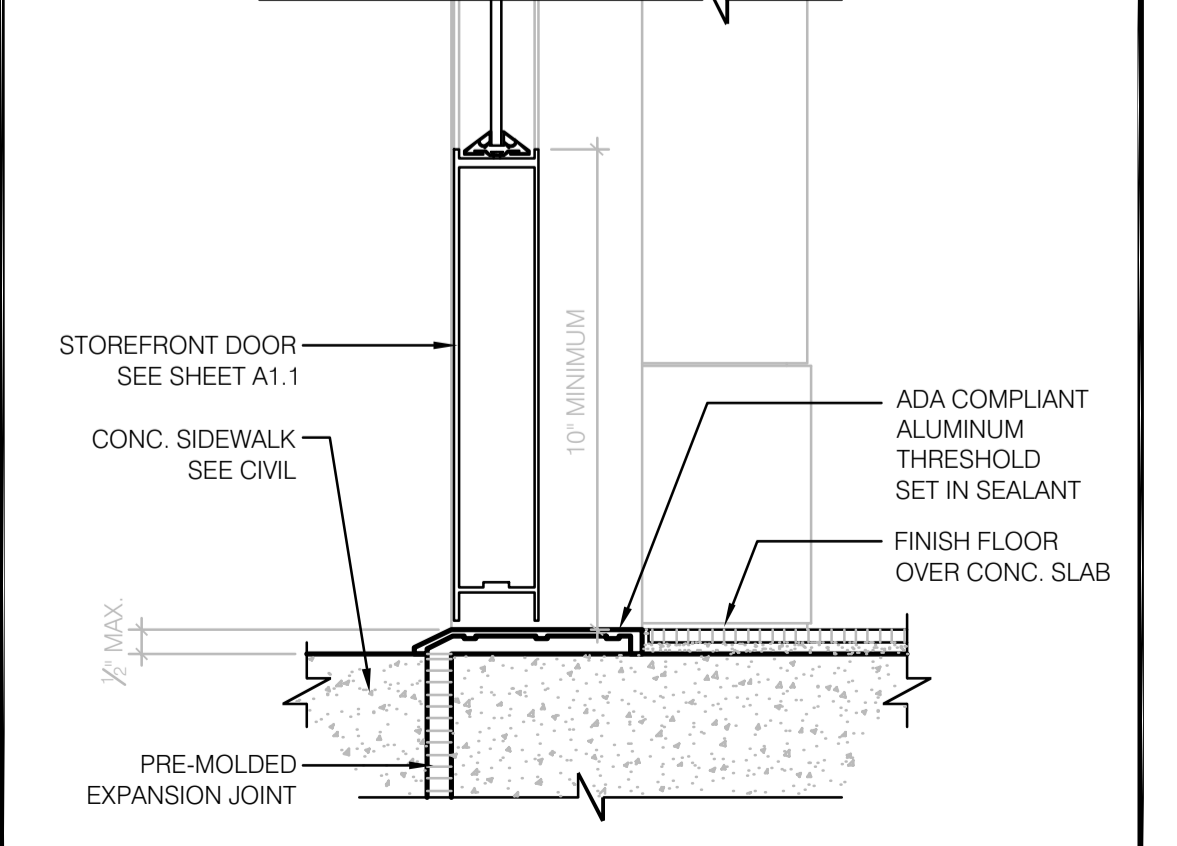
DINING ROOM CHAIR RAIL 3/8" = 1'-0" **9**



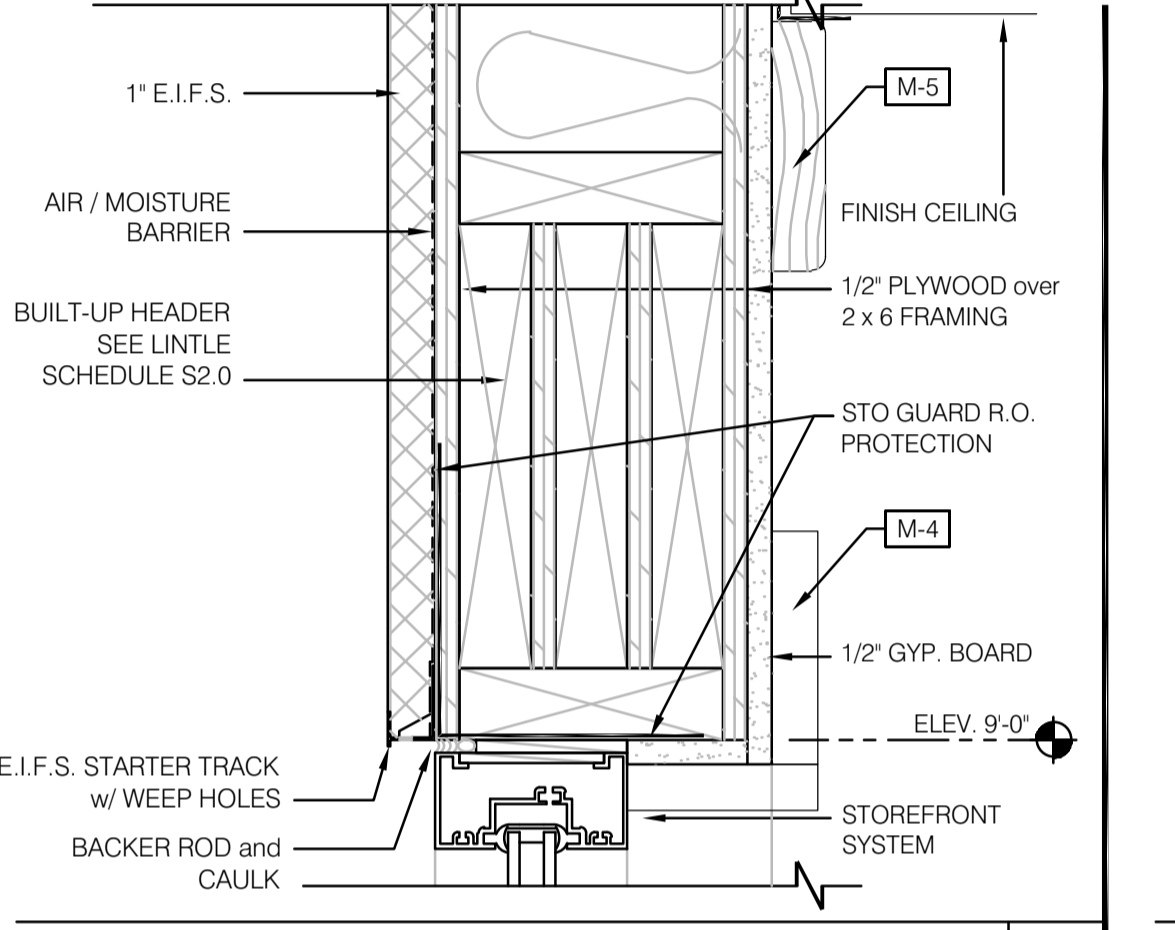
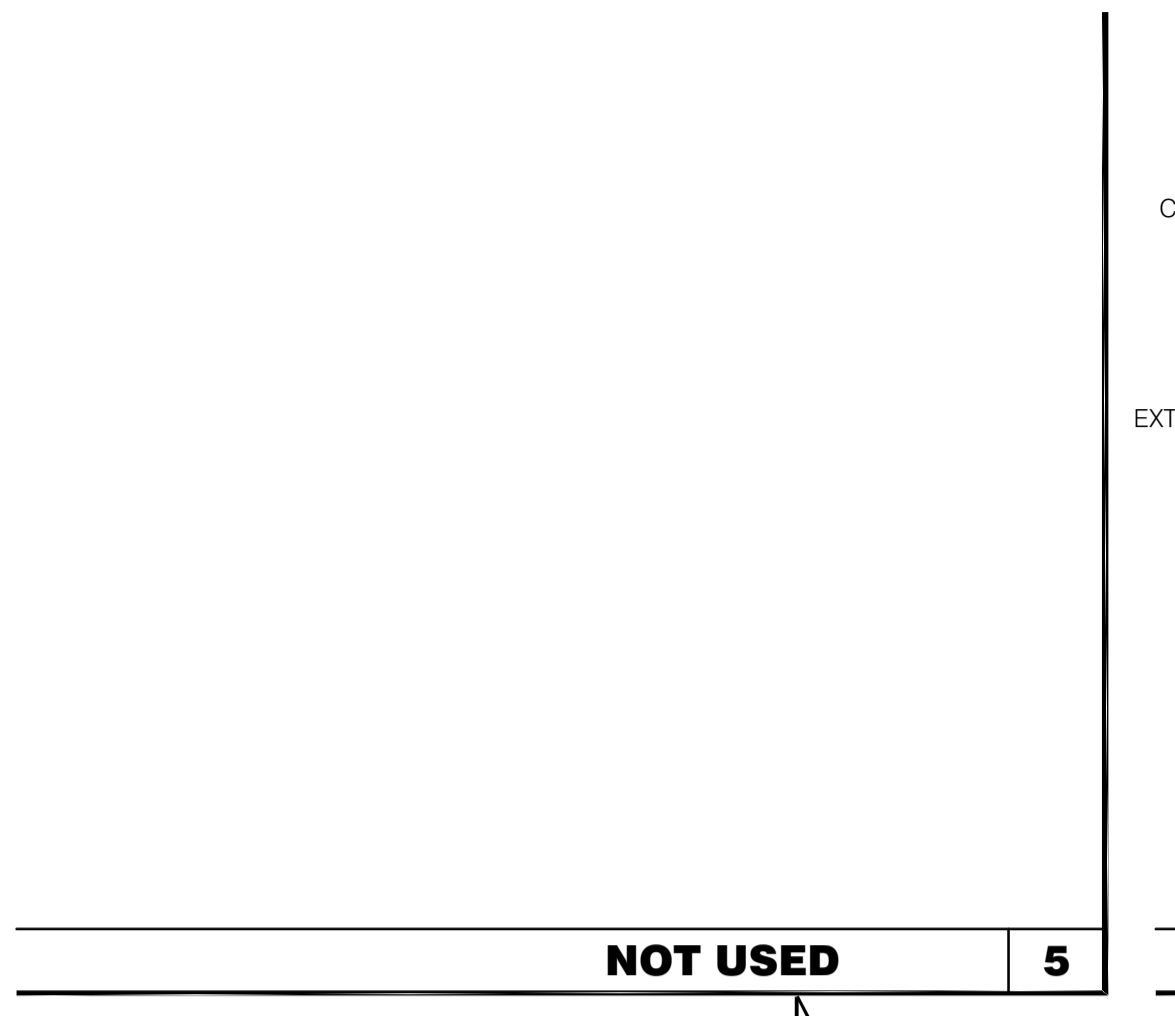
E.I.F.S. to THIN BRICK TRANSITION 3/8" = 1'-0" **10**



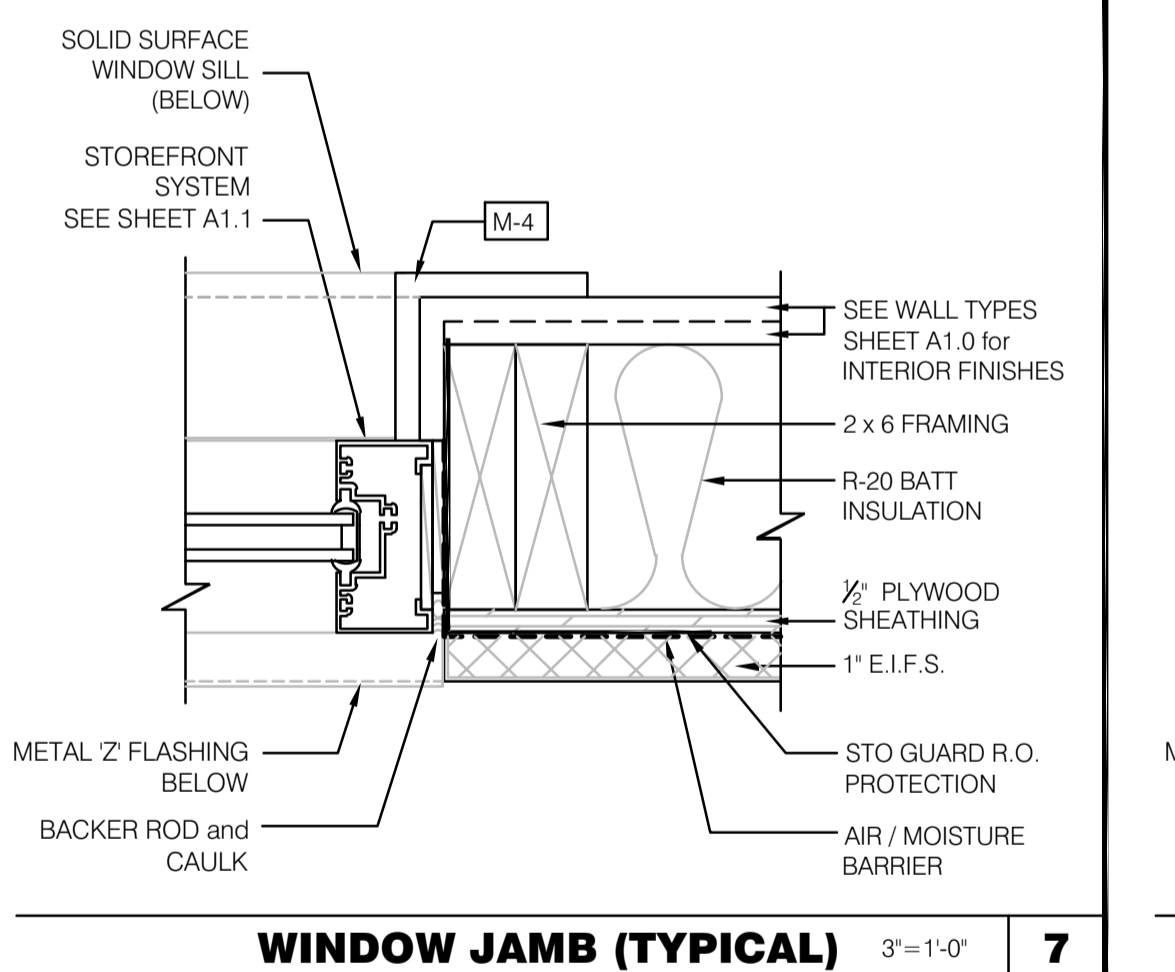
TYPICAL THIN BRICK CORNER 3/8" = 1'-0" **11**



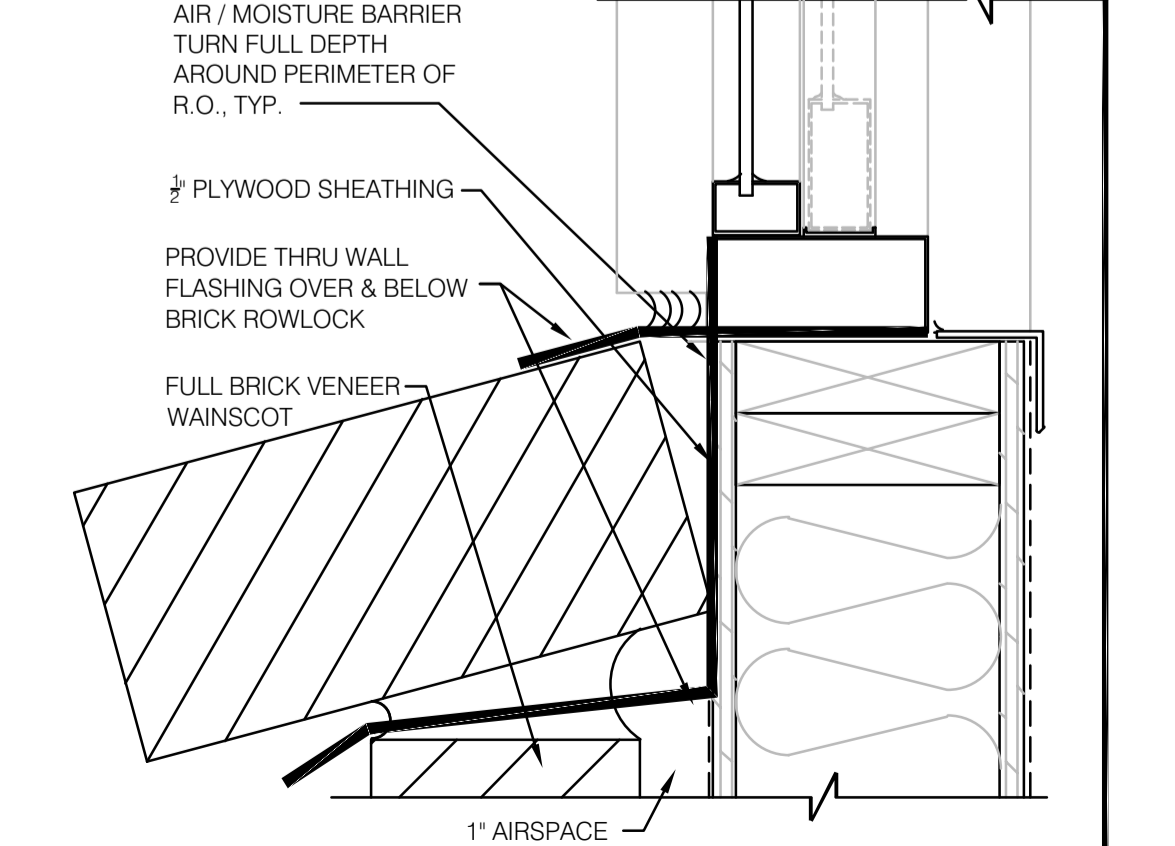
THRESHOLD at STOREFRONT DOOR 3/8" = 1'-0" **12**



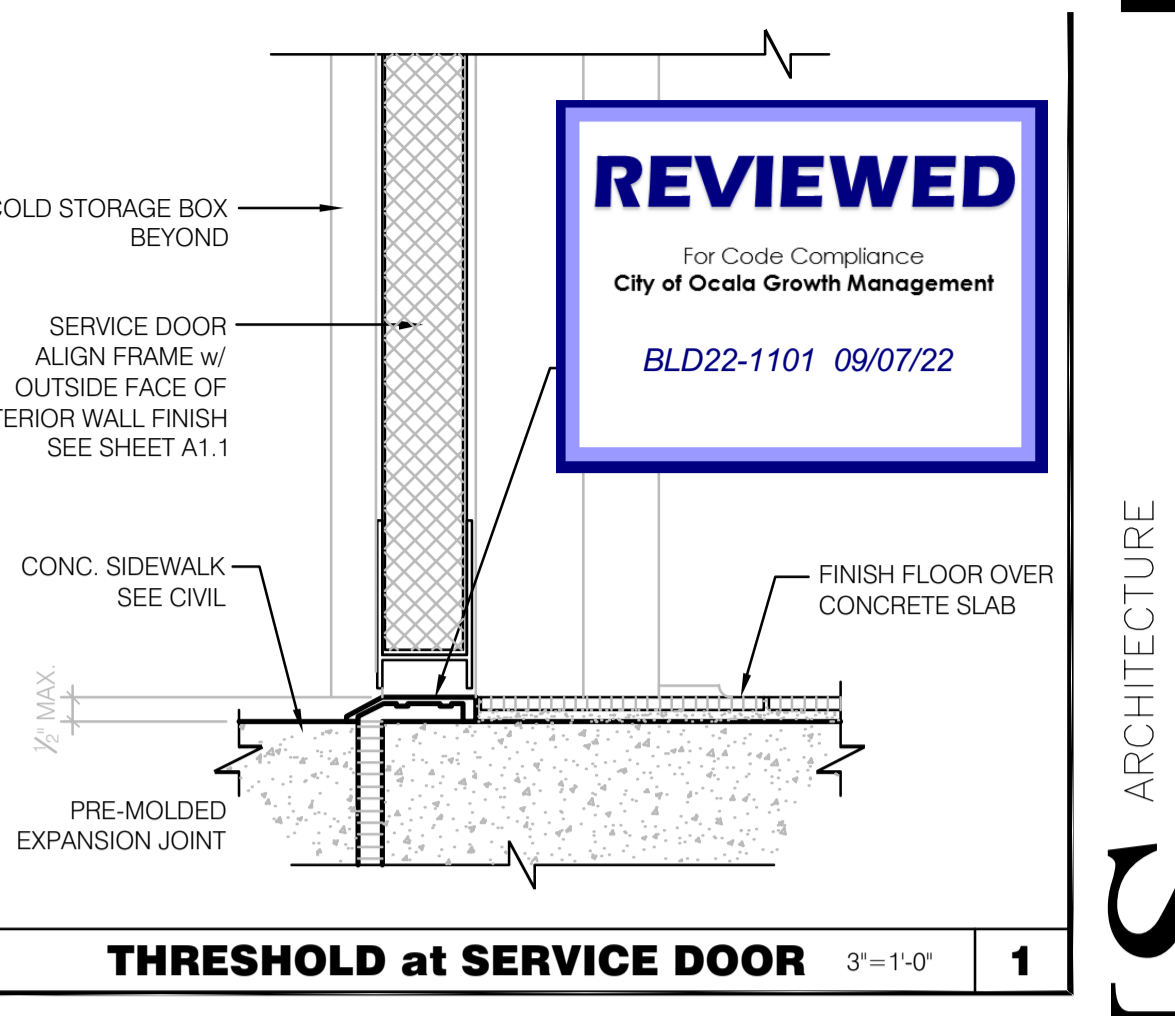
WINDOW HEAD at DINING (FRONT) 3/8" = 1'-0" **6**



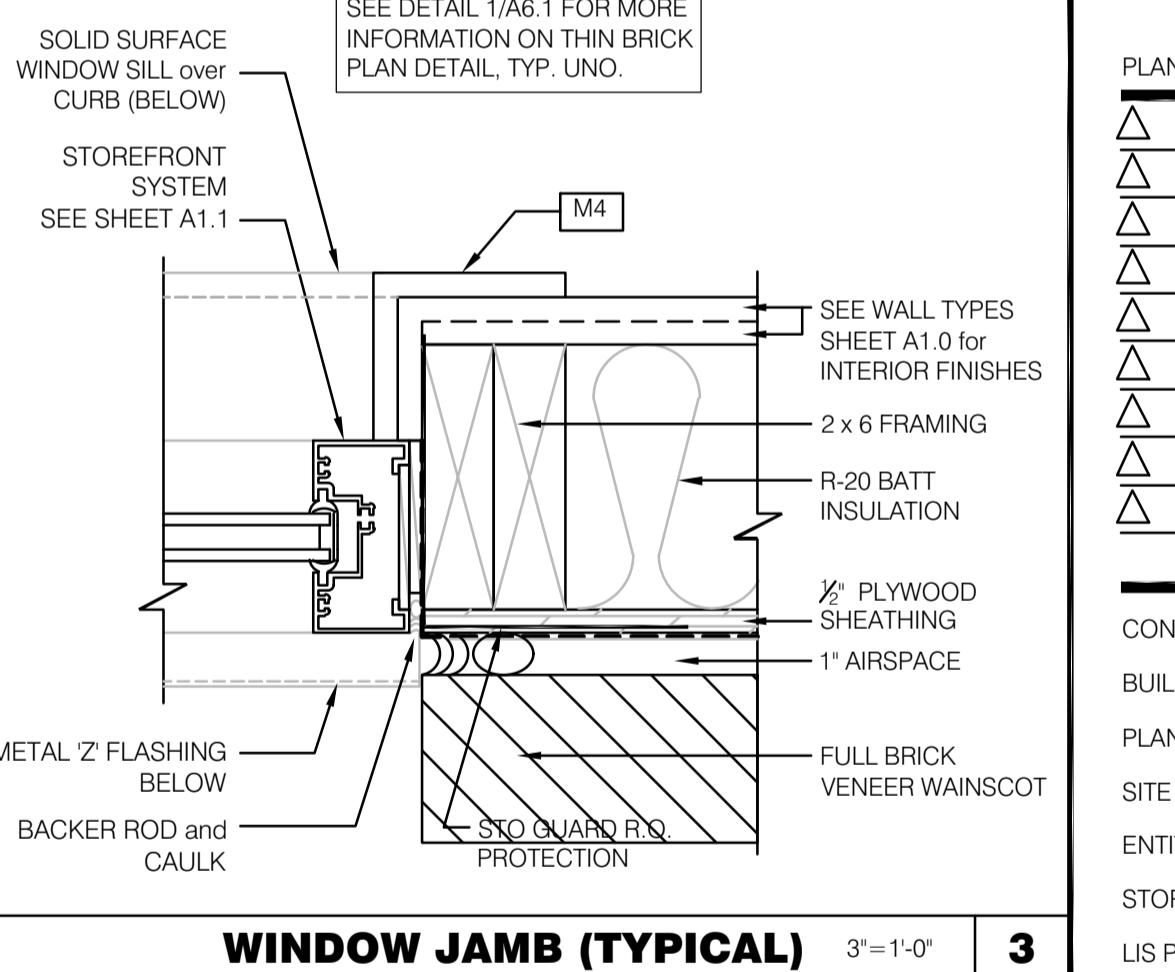
WINDOW JAMB (TYPICAL) 3/8" = 1'-0" **7**



WINDOW SILL at DRIVE THRU 3/8" = 1'-0" **8**



WINDOW JAMB (TYPICAL) 3/8" = 1'-0" **3**



FLASHING at TOP OF WALK-IN 3/8" = 1'-0" **4**

LIS ARCHITECTURE ENGINEERING

ENGINEERING OFFICE
21430 Palm Beach Blvd.
Ave., Fla. 33920
Phone: (239) 693-9244
Facsimile: (239) 693-9828

ARCHITECTURE / ENGINEERING OFFICE
2570 West State Road, 4th Fl.
Suite 2064, Ocala, FL 32765
Phone: (321) 244-0402
Facsimile: (321) 244-9419

LAND INVESTMENT SERVICES, LLC
AA 26002040 CA NO: 6853 LB1057



Digitally signed by Harold Hutter
DN: c=US, o=Unaffiliated,
ou=A01410C000001734E2BCCF
00000303, cn=Harold Hutter
Date: 2022.03.31 15:21:12 -04'00'

HAROLD DANIEL HUTTER III
FL REG. AR98913

PLAN SET REVISIONS:

△	
△	
△	
△	
△	
△	
△	
△	
△	
△	

CONTRACT DATE: ...2019
BUILDING TYPE: Kb 30-19
PLAN VERSION: 2018.A
SITE NUMBER:
ENTITY NUMBER:
STORE NUMBER:
LIS PROJECT: 2019-304

KFC
3615 W SILVER SPRINGS BLVD.
OCALA, FL

Kb 30-19

CONSTRUCTION DETAILS

A6.1

PLOT DATE: 03/29/2022