

NOTE:

REFER TO GRAPHICS PACKAGE FOR EXACT LOCATION, SIZE AND FORM OF ALL EXTERIOR DIMENSIONAL AND APPLIED LOGOS, SIGNS BANNERS AND GRAPHICS.



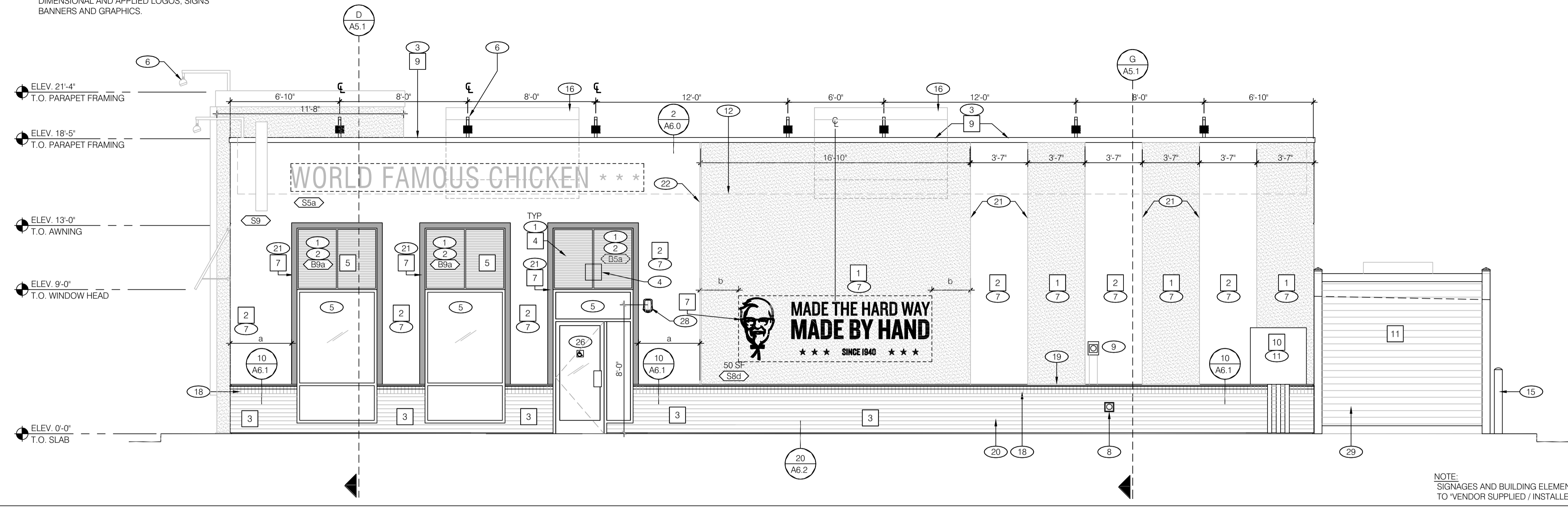
ENGINEERING OFFICE
21430 Palm Beach Blvd.
Avala, Fla. 33920
Phone: (239) 693-9244
facsimile: (239) 693-9828

ARCHITECTURE
ENGINEERING

LIS
LAND INVESTMENT SERVICES, LLC
AA 26002040 CA NO: 6853 LB1057
ARCHITECTURE / ENGINEERING OFFICE
10001 State Road 101, Suite 307
Solis, FL 32765
Phone: (321) 244-0402
facsimile: (321) 244-9419



Digitally signed by Harold Hutter
DN: c=US, o=Unaffiliated,
ou=A01410C00001734EB2BCC
F00000303, cn=Harold Hutter
Date: 2022.06.03 15:38:59 -04'00



NOTE:
SIGNAGES AND BUILDING ELEMENTS NOT SHOWN ON THIS SHEET, REFER TO 'VENDOR SUPPLIED / INSTALLED ELEMENTS' GENERAL NOTE, THIS SHEET.

MAIN ENTRY ELEVATION 1/4"=1'-0" **A**

| SYMBOL | EXTERIOR WALL AREA | MANUFACTURER | COLOR | NOTES | CONTACT |
|--------|--|----------------|--|---|---|
| 1 | EXTERIOR PAINT | BENJAMIN MOORE | AURA EXTERIOR PAINT EXOTIC RED 2086-10 LOW LUSTER (634) | | KURT MCCLELLAND P: (800) 635-5147 / C: (502) 640-1608 kurt.mcclelland@benjaminmoore.com |
| 2 | EXTERIOR PAINT | BENJAMIN MOORE | REGAL SELECT EXTERIOR PAINT WEDDING VEIL 2125-70 LOW LUSTER (N401) | | KURT MCCLELLAND P: (800) 635-5147 / C: (502) 640-1608 kurt.mcclelland@benjaminmoore.com |
| 3 | WAINSCOT | | BRICK: PROVIDE GENERIC SMOOTH BRICK | TO BE PAINTED P-13 | |
| 4 | EXTERIOR PAINT | BENJAMIN MOORE | AURA EXTERIOR PAINT BLACK HORIZON 2132-30 LOW LUSTER (634) | | KURT MCCLELLAND P: (800) 635-5147 / C: (502) 640-1608 kurt.mcclelland@benjaminmoore.com |
| 5 | LOUVERED AWNINGS | PRE-FINISHED | AURA EXTERIOR PAINT EXOTIC RED 2086-10 LOW LUSTER (634) | | |
| 6 | BOLLARDS | | PVC SLEEVE VERIFY COLOR w/ OWNER | | |
| 7 | PAINTED 4" BORDER AROUND WINDOW, AWNING AND BEHIND AWNING (ABOVE THE WINDOW) | | AURA EXTERIOR PAINT BLACK HORIZON 2132-30 LOW LUSTER (634) | | KURT MCCLELLAND P: (800) 635-5147 / C: (502) 640-1608 kurt.mcclelland@benjaminmoore.com |
| 8 | STENCIL | | BLACK | | |
| 9 | EXTERIOR METAL | BENJAMIN MOORE | COROTECH POLYESTER URTHANE CUSTOM MATCH BENJAMIN MOORE 2125-70 WEDDING VEIL (V520) | COROTECH PRIMER (V132) | KURT MCCLELLAND P: (800) 635-5147 / C: (502) 640-1608 kurt.mcclelland@benjaminmoore.com |
| 10 | EXTERIOR METAL | BENJAMIN MOORE | COROTECH POLYESTER URTHANE CUSTOM MATCH BENJAMIN MOORE 2132-30 BLACK HORIZON (V520) | COROTECH PRIMER (V132) | KURT MCCLELLAND P: (800) 635-5147 / C: (502) 640-1608 kurt.mcclelland@benjaminmoore.com |
| 11 | EXTERIOR COMPOSITE SIDING | AZEK | COMPOSITE DECKING SQUARE SHOULDERED CAPPED, 5.5" w. X 1", HARVEST COLLECTION, ISLAND OAK | NAIL OR SCREW PVC PLANKS TO WOOD SUPPORTS, PER MANUF. REQUIREMENTS. | AZEK BUILDING PRODUCTS P: (877) 275-2935 |
| 12 | EXTERIOR METAL | BENJAMIN MOORE | COROTECH POLYESTER URTHANE CUSTOM MATCH BENJAMIN MOORE 2086-10 EXOTIC RED (V520) | | |
| 13 | EXTERIOR MASONRY | BENJAMIN MOORE | COROTECH POLYESTER URTHANE CUSTOM MATCH BENJAMIN MOORE 2132-30 BLACK HORIZON (V520) | | |

EXTERIOR FINISH SCHEDULE **F**

| IMAGE COMPONENTS SCHEDULE | | | |
|---------------------------|-----|--|------|
| TAG | QTY | ITEM DESCRIPTION | ELEC |
| S1a | 1 | VINYL LOGO/GRAPHICS FOR TOWER PANEL - FULL HT. | |
| S1b | 0 | VINYL LOGO/GRAPHICS FOR TOWER PANEL - HALF HT. | |
| S3a | 0 | KFC CHANNEL LETTERS - 30" RED | X |
| S3b | 2 | KFC CHANNEL LETTERS - 24" RED | X |
| S3c | 0 | KFC CHANNEL LETTERS - 30" WHITE | X |
| S3d | 0 | KFC CHANNEL LETTERS - 24" WHITE | X |
| S4a | 1 | "REAL MEALS TO GO" DIMENSIONAL LETTERS FOR 15' DT CANOPY | |
| S4b | 0 | "REAL MEALS TO GO" VINYL LETTERS FOR 8' DT CANOPY | |
| S5a | 1 | "WORLD FAMOUS CHICKEN" LETTERS - 16" DIMENSIONAL PIN MOUNT | |
| S5b | 0 | "WORLD FAMOUS CHICKEN" 16" LETTERS - PAINT | |
| S5c | 0 | "WORLD FAMOUS CHICKEN" 12" LETTERS - PAINT | |
| S5d | 0 | "WORLD FAMOUS CHICKEN" STACKED LETTERS - PAINT | |
| S6 | 0 | "REAL MEALS" BUCKET SIGN | |
| S7 | 0 | "REAL MEALS TO GO" BUCKET SIGN | |
| S8a | 1 | "HARD WAY" PAINT TEMPLATE - 57" ROUND | |
| S8d | 1 | "HARD WAY" PAINT TEMPLATE - HORIZONTAL | |
| S9 | 1 | "HOT FRESH ARROW SIGN" | X |
| S15b | 1 | "HOT FRESH ARROW SIGN" | X |
| G9a | 2 | STORE HOURS - ENTRY DOOR | |
| G9b | 1 | STORE HOURS - DT WINDOW | |
| G9c | 1 | STORE HOURS - DT SPEAKER POST/CANOPY | |

| BUILDING EXTERIOR ELEMENTS | | | |
|----------------------------|---|--|--|
| B1a | 1 | TOWER PANEL W/ HALF HT LOGO (NO GRAPHICS)- FULL HT W/ EXTENDER | |
| B1b | 0 | TOWER PANEL W/ LOGO AND GRAPHICS - HALF HT | |
| B2 | 1 | TOWER LID CANOPY | |
| B3a | 1 | DT WINDOW CANOPY - 15'-0" WIDE | |
| B9a | 5 | SHUTTERED AWNINGS - 5'-0" WIDE, 4'-6" HT | |
| B9b | 1 | SHUTTERED AWNINGS - 6'-4" WIDE, 4'-6" HT | |
| B9a-DT | 2 | SHUTTERED AWNINGS - 5'-0" WIDE, 4'-0" HT | |

IMAGE COMPONENTS SCHEDULE **D**

MISCELLANEOUS:
A. SEE SHEET A1.1 "WINDOW TYPES" FOR WINDOW ELEVATIONS.
B. PAINT COLORS SHOWN ARE COLOR REFERENCES FOR THE E.I.F.S. SUPPLIER.

SEALERS (REFER TO SPECS):
A. SEALANT AT ALL WALL AND ROOF PENETRATIONS.
B. SEALANT AT ALL WINDOW AND DOOR FRAMES AT HEAD AND JAMB. DO NOT SEAL SILL AT WINDOWS.

HIGH IMPACT E.I.F.S.:
(A) AS REQUIRED PER SITE-SPECIFIC DESIGN: E.I.F.S. BASE COAT W/ 20 OZ. HIGH IMPACT MESH TO BE APPLIED FROM STARTER TRACK TO 7'-0" A.F.F. REFER TO SPECIFICATION MANUAL FOR E.I.F.S. MANUFACTURER'S ASSEMBLY DETAILS.

CRITICAL FINISH OPENINGS:
BUILDING FINISH OPENINGS THAT ARE DESIGNATED AS "CRITICAL" SHALL BE MAINTAINED TO PROVIDE FOR THE STANDARD INSTALLATION OF STANDARD SIGNAGE / BUILDING ELEMENTS. SEE GENERAL NOTE FOR 'VENDOR PROVIDED / VENDOR INSTALLED ELEMENTS'.

THIN BRICK INSTALLATION:
THE GENERAL CONTRACTOR TO ENSURE THAT THE BRICK JOINTS ARE PLUMB AND LEVEL, AND THE BRICK FACES ALIGNED AND FLUSH.

VENDOR SUPPLIED / INSTALLED ELEMENTS:
GC TO COORDINATE WITH VENDOR PROVIDED / VENDOR INSTALLED SIGNAGE AND BUILDING ELEMENTS.

GENERAL NOTES **C**

- 1 PAINT WALL SURFACE BEHIND NEW AWNING
- 2 PRE-FINISHED METAL LOUVERED AWNINGS (AWNINGS ABOVE DOORS TO HAVE RAIN DIVERTERS)
- 3 PARAPET FASCIA CAP.
- 4 WALL PACK LIGHT
- 5 ALUMINUM STOREFRONT WINDOW / DOOR SYSTEM. SEE SHEET A1.1.
- 6 WALL LIGHTING - LIGHTING VENDOR SUPPLIED / GC INSTALLED. SEE SHEET E4.0.
- 7 STO CORP. 1" DRAINABLE E.I.F.S. REFER TO SPECIFICATIONS MANUAL FOR MANUFACTURER'S ASSEMBLY DETAILS, FIELD SUPPORT SERVICES AND CONTACTS. REFER TO DETAILS, SHEET A6.3. SEE HIGH IMPACT E.I.F.S.' GENERAL NOTE.
- 8 HOSE BIB - REFER TO DETAIL 5 / A6.2.
- 9 CO2 FILLER VALVE & COVER. SEE DETAIL 11/A6.2
- 10 SCUPPER, COLLECTOR AND DOWNSPOUT 6" MIN.
- 11 SWITCHGEAR.
- 12 INDICATES TOP OF ROOF DECK.
- 13 DRIVE THRU WINDOW. SEE SHEET A2.1
- 14 GAS METER. DO NOT PAINT METER.
- 15 STEEL BOLLARD W/ PVC SLEEVE. SEE SITE DETAILS.
- 16 TOP OF RTU. COORDINATE WITH MANUFACTURER'S SPECIFICATIONS.
- 17 EXHAUST FANS ON ROOF.
- 18 BRICK SILL.
- 19 TRANSITION FROM THIN BRICK -10- E.I.F.S.
- 20 THIN BRICK RUNNING BOND
- 21 LINE OF PAINT COLOR CHANGE.
- 22 1/2" GROOVE IN E.I.F.S. SEE DETAIL 14 / A6.2.
- 23 ROOF ACCESS LADDER. SEE DETAIL 14 & 15/ A6.3
- 24 THRU WALL OVERFLOW STORM DRAINAGE
- 25 STAINLESS STEEL CORNER GUARDS.
- 26 HANDICAP SIGNAGE; MOUNT AT 5'-0" A.F.F.
- 27 SECURITY DOOR. OWNER-SUPPLIED / G.C. INSTALL.
- 28 EMERGENCY LIGHT PER ELECTRIC
- 29 AZEK COMPOSITE SIDING FENCE BY G.C.
- 30 DOOR BY COOLER MANUFACTURER TO MATCH SECURITY DOOR FUNCTION AND HARDWARE INCLUDING VIEW PANEL.
- 31 INSTALL ADDRESS NUMBERS PER MARION COUNTY ORDINANCE #2004-24: NUMBERS TO BE MIN. 6" TALL IN BLACK "REFLECTIVE" COLOR MATERIAL. GC TO INSTALL ADDITIONAL ADDRESS NUMBERS ON PROPOSED SITE SIGN.

NOTE: NOT ALL KEY NOTES APPLY TO THIS SHEET **KEY NOTES** **B**

HAROLD DANIEL HUTTER III
FL. REG. AR98913

PLAN SET REVISIONS:

| | |
|--|--|
| | |
| | |
| | |
| | |
| | |
| | |
| | |
| | |
| | |
| | |
| | |
| | |

CONTRACT DATE: ...-2019
BUILDING TYPE: Kb 30-19
PLAN VERSION: 2018.A
SITE NUMBER:
ENTITY NUMBER:
STORE NUMBER:
LIS PROJECT: 2019-304

KFC
3615 W SILVER SPRINGS BLVD.
OCALA, FL

Kb 30-19

EXTERIOR ELEVATION

A4.0

PLOT DATE: 03/29/2022