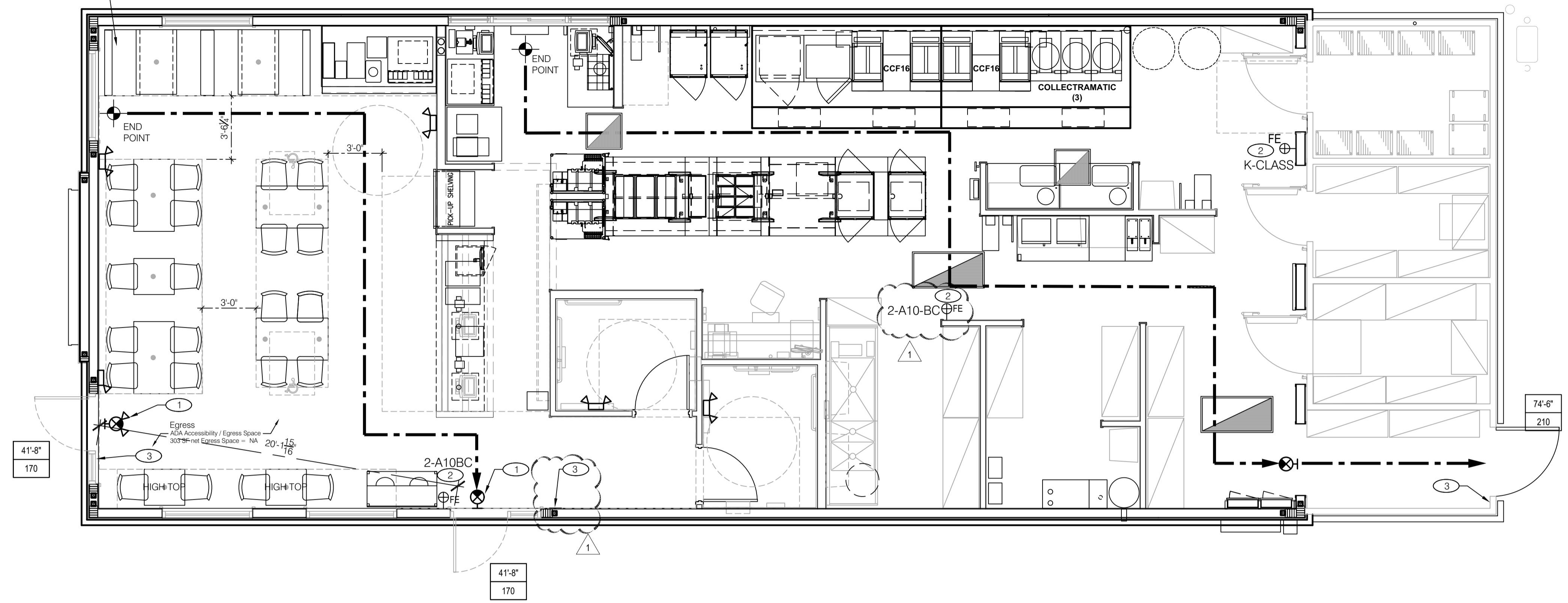


**REVIEWED**  
 For Code Compliance  
 City of Ocala Growth Management  
 BLD22-1101 09/07/22

4 DINING  
 Fixed Booths 64 SF NET (6 BOOTHS @ 44' EA.)  
 1 PERSON 24" OF BOOTH = 2 Occupants EA.



SYMBOL	DESCRIPTION
	EXIT LIGHT
	MAXIMUM EGRESS PATH
	FIRE EXTINGUISHER, WALL MOUNTED (F.E.) RE: NFPA
	MOST REMOTE POINT
	EGRESS DISTANCE (FEET)
	EGRESS CAPACITY (PEOPLE)

- 1 EMERGENCY / EXIT SIGN COMBO
- 2 FIRE EXTINGUISHER (PER LOCAL CODE) TO BE FURNISHED AND INSTALLED BY CONTRACTOR. SEE DETAIL THIS SHEET C/LS1.0
- 3 POST OCCUPANT LOAD SIGN NEAR MAIN ENTRY

**FIRE EXTINGUISHER LOCATION:**  
 VERIFY THAT FIRE EXTINGUISHERS - (2) 10 lb. BC IN THE DINING/KITCHEN AREA and (1) 10 lb. CLASS 'K' IN THE KITCHEN TO COMPLY WITH LOCAL FIRE CODE. PROVIDE NEW WITH WALL BRACKET and LOCATE FIRE EXTINGUISHERS IN DINING AREA AS INDICATED ON PLAN AND EXTINGUISHER IN KITCHEN AS DESIGNATED BY FIRE MARSHALL OR LOCAL AUTHORIZING AGENT.

**OCCUPANT LOAD SCHEDULE** (2018 NFPA 101 TABLE 7.3.1.2)

SPACE NAME	TYPE OF SPACE	NET AREA SF	SF/OCCUPANT	TOTAL
DINING ROOM	NON FIXED SEATS	390 SF	/ 15 NET SF	26
DINING ROOM	FIXED BOOTHS / COUNTER	100 SF	4 BOOTHS 176' / 18	10
QUEUING	STANDING SPACE	45 SF		9
KITCHEN	KITCHEN	1027 SF	/ 200 GROSS	6
COOLER / FREEZER	STORAGE	196 SF	/ 300 NET SF	1
RESTROOMS	RESTROOMS	142 SF	N/A	--
EGRESS	EGRESS	300 SF	N/A	--
TOTAL	N/A	+/- 2,200 SF	N/A	62

2 WHEEL CHAIR ACCESSIBLE SPACES PER ACCESSIBLE SEATS BASED ON 5% OF TOTAL SEATING (30 SEATS TOTAL)

**LIFE SAFETY PLAN** 1/4" = 1'-0" **A**

**MEANS OF EGRESS** (2020 FLORIDA FIRE PREVENTION CODE, SEVENTH EDITION (NFPA 1 & NFPA 101, 2018 EDITIONS))

(2020 FBC, 7TH EDITION - CHAPTER 10)

EGRESS WIDTH PER OCCUPANT - UN-SPRINKLED (FBC SECTION 1005.3.1)	0.2	
STAIRWAYS (INCHES PER OCCUPANT)	0.3	
OTHER EGRESS COMPONENTS (INCHES PER OCCUPANT)	0.2	
EXIT ACCESS TRAVEL DISTANCE (FBC TABLE 1006.2.1)	75 FEET	
ASSEMBLY OCCUPANCY / UN-SPRINKLED		
CORRIDOR WIDTH (FBC TABLE 1020.2)	44 INCHES	
MINIMUM WIDTH		
DEADEND CORRIDOR LENGTH (FBC 1020.4)	20 FEET	
MAXIMUM LENGTH		
SIZE OF DOORS (FBCA 404.0.3)	32 INCHES	
MINIMUM CLEAR WIDTH		
STAIRWAY WIDTH (FBC 1011.2)	44 INCHES	
MINIMUM CLEAR WIDTH		
NUMBER OF EXITS AND CONTINUITY (FBC TABLE 1006.3.1)		
OCCUPANT LOAD	MIN NUMBER OF EXITS	# PROVIDED
1-500	2	3

**FIRE RESISTANCE**

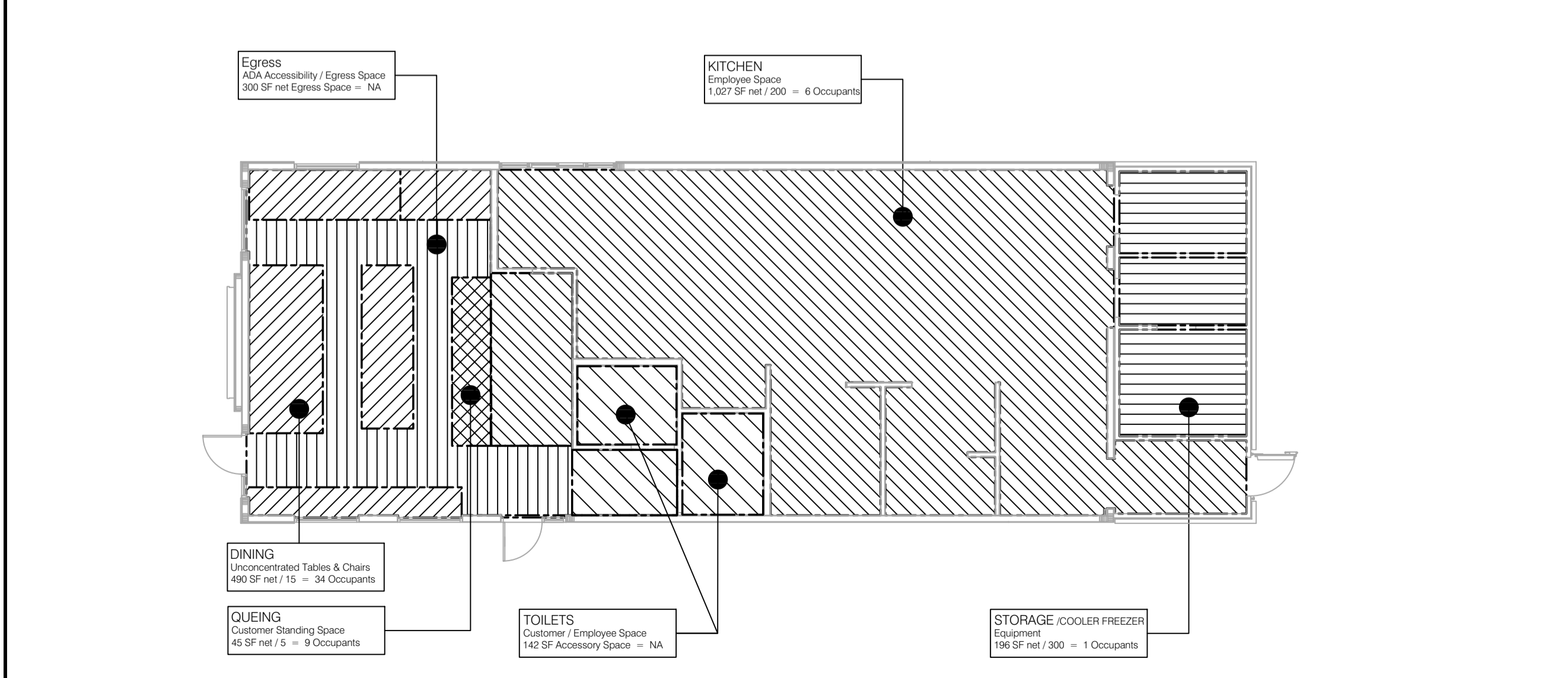
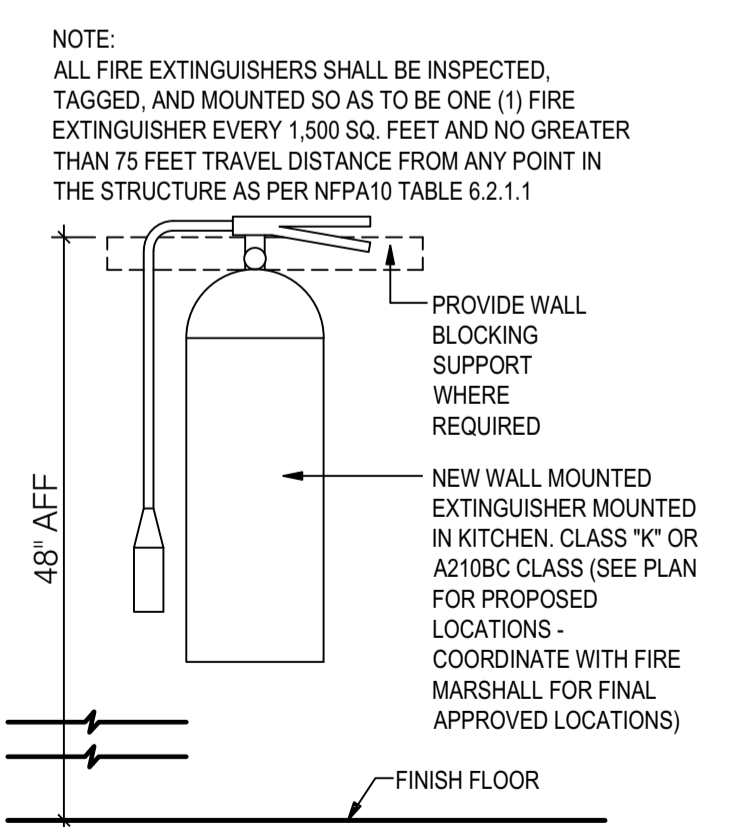
**INTERIOR FINISHES (FBC 803)**

CLASSIFICATION (FBC 803.1)  
 CLASS A: FLAME SPREAD INDEX 0-25; SMOKE-DEVELOPED INDEX 0-450  
 CLASS B: FLAME SPREAD INDEX 26-75; SMOKE-DEVELOPED INDEX 0-450  
 CLASS C: FLAME SPREAD INDEX 76-200; SMOKE-DEVELOPED INDEX 0-450

OCCUPANCY (ASSEMBLY UN-SPRINKLED) (FBC 803.9)  
 VERTICAL EXITS AND EXIT PASSAGEWAYS - CLASS A  
 EXIT ACCESS CORRIDORS AND OTHER EXITWAYS - CLASS A  
 ROOMS AND ENCLOSED SPACES - CLASS B

**PLUMBING, MINIMUM FACILITIES** (FBC-PLUMBING, TABLE 403.1)

OCCUPANCY	WATER CLOSETS	REQUIRED MALE	REQUIRED FEMALE	PROVIDED
RESTAURANT W/ 40 OCCUPANTS	1 PER 75	1	1	2
	LAVATORIES	1 PER 75	1	1 EACH PROVIDED
	SERVICE SINK		1	1 PROVIDED



**OCCUPANT LOAD KEY PLAN** **B**

**CODE INFORMATION AND EXTINGUISHER DETAIL** **C**

ENGINEERING OFFICE  
 21430 Palm Beach Blvd.  
 Suite 206  
 Ocala, Fla. 33920  
 Phone: (352) 693-9244  
 Facsimile: (352) 693-9828

ARCHITECTURE ENGINEERING  
**LIS**  
 LAND INVESTMENT SERVICES, LLC  
 AA 26002040 CA NO: 6853 LB1057  
 ARCHITECTURE / ENGINEERING OFFICE  
 206 S. Rockledge Rd.  
 Suite 206  
 Ocala, Fla. 32765  
 Phone: (321) 244-0402  
 Facsimile: (321) 244-9419



Digitally signed by Harold Hutter  
 DN: c=US, o=Unaffiliated,  
 ou=A01410C000001734EB2BCC  
 F00000303, cn=Harold Hutter  
 Date: 2022.06.03 15:38:27 -0400

HAROLD DANIEL HUTTER III  
 FL. REG. AR88913

PLAN SET REVISIONS:

- △
- △
- △
- △
- △
- △
- △
- △
- △
- △

CONTRACT DATE: ...-2019  
 BUILDING TYPE: Kb 30-19  
 PLAN VERSION: 2018.A  
 SITE NUMBER:  
 ENTITY NUMBER:  
 STORE NUMBER:  
 LIS PROJECT: 2019-304

**KFC**  
 3615 W SILVER SPRINGS BLVD.  
 OCALA, FL

Kb 30-19

**LIFE SAFETY PLAN**  
**LS1.0**  
 PLOT DATE: 03/29/2022