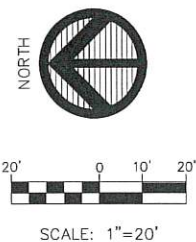


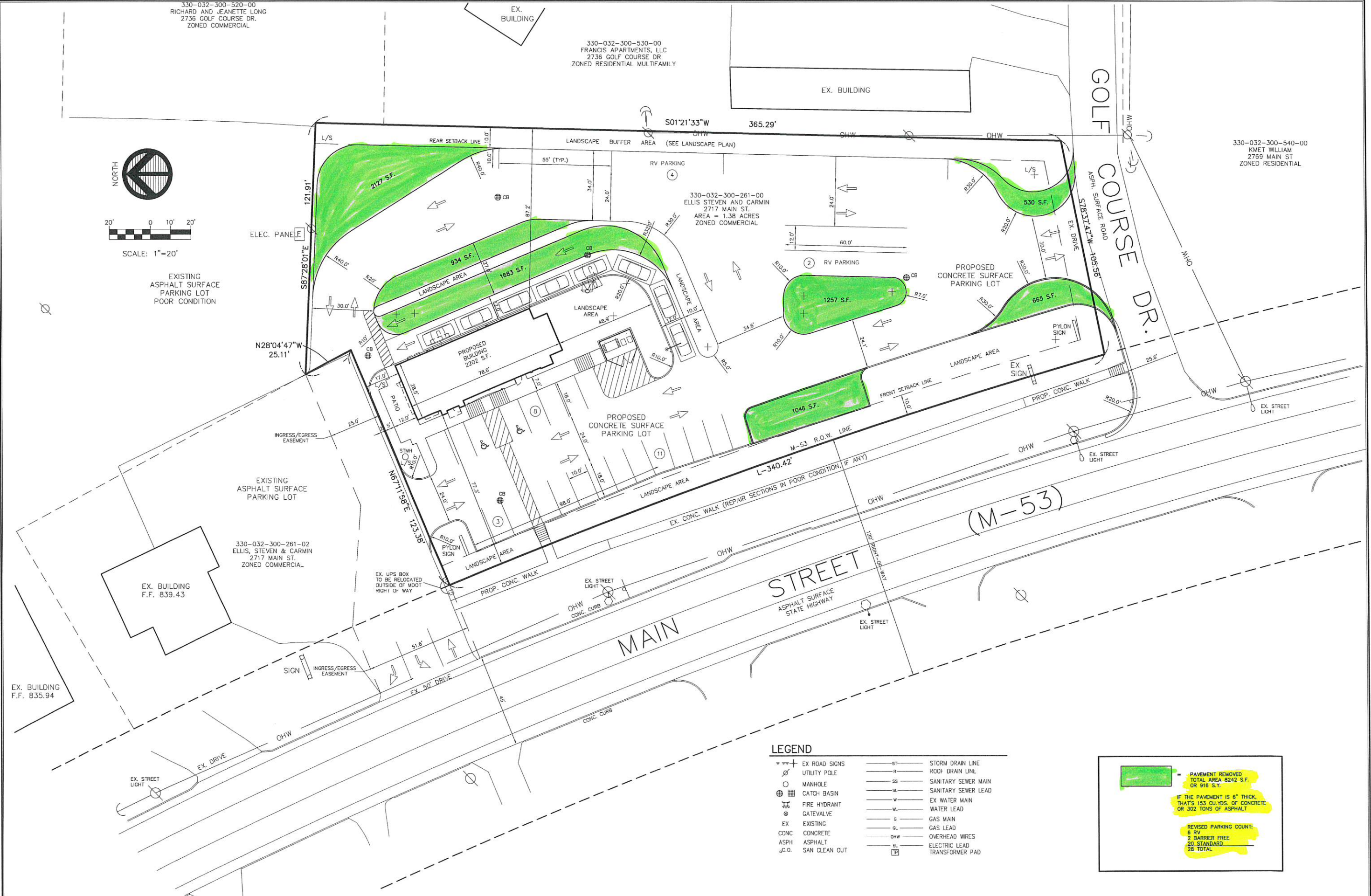
330-032-300-520-00
RICHARD AND JEANNETTE LONG
2736 GOLF COURSE DR.
ZONED COMMERCIAL

330-032-300-530-00
FRANCIS APARTMENTS, LLC
2736 GOLF COURSE DR
ZONED RESIDENTIAL MULTIFAMILY

330-032-300-540-00
KMET WILLIAM
2769 MAIN ST
ZONED RESIDENTIAL



EXISTING ASPHALT SURFACE PARKING LOT POOR CONDITION



LEGEND

EX ROAD SIGNS	ST	STORM DRAIN LINE
UTILITY POLE	R	ROOF DRAIN LINE
MANHOLE	SS	SANITARY SEWER MAIN
CATCH BASIN	SL	SANITARY SEWER LEAD
FIRE HYDRANT	W	EX WATER MAIN
GATEVALVE	WL	WATER LEAD
EXISTING	G	GAS MAIN
CONC	GL	GAS LEAD
ASPH	OHW	OVERHEAD WIRES
S.C.O.	EL	ELECTRIC LEAD
	TR	TRANSFORMER PAD

PAVEMENT REMOVED
TOTAL AREA 8242 S.F.
OR 916 S.Y.

IF THE PAVEMENT IS 6" THICK,
THAT'S 153 CU.YDS. OF CONCRETE
OR 302 TONS OF ASPHALT

REVISED PARKING COUNT:
6 RV
2 BARRIER FREE
20 STANDARD
28 TOTAL

No.	REVISIONS	DATE	BY

811
Know what's below.
Call before you dig.

JOSEPH A. WIZYNAJUTS
NO. 6201021585
STATE OF MICHIGAN

SCALE:
1"=20'

DATE:
8.18.2022

DESIGNED BY:
M JW

DRAWN BY:
M JW

CHECKED BY:
JAW

DATE:

FIELD CREW CHIEF:
N/A

DEVELOPER
GREAT LAKES TACO, LLC

6467 RETREAT DRIVE
GRAND BLANC, MI 48439
810-771-4500



REC ENGINEERS
REAL ESTATE CONSULTING ENGINEERS, LLC

16509 BELFAST, FENTON, MICHIGAN 48430
(810) 869-0194 OR (810) 845-5364

POSSIBLE PAVING REVISIONS
FOR
MARLETTE TACO BELL

CITY OF MARLETTE SANILAC COUNTY MICHIGAN MARLETTE TB

SHEET OF