

1

2

3

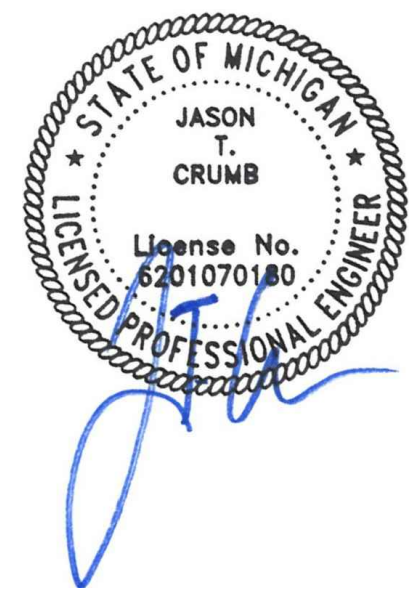
4

5

6



COPYRIGHT
THESE DOCUMENTS ARE PROTECTED BY UNITED STATES
COPYRIGHT LAW. THEY HAVE BEEN PREPARED SPECIFICALLY
FOR THE PROJECT IDENTIFIED AND ARE NOT SUITABLE FOR
USE ON ANY OTHER PROJECT OR AT ANY OTHER LOCATION
WITHOUT THE EXPRESS WRITTEN APPROVAL AND
PARTICIPATION OF ARCHITECTURE. REPRODUCTION OF
THESE DOCUMENTS MUST BE AUTHORIZED BY THE ARCHITECT.
ALL RIGHTS ARE RESERVED TO ARCHITECTURE.



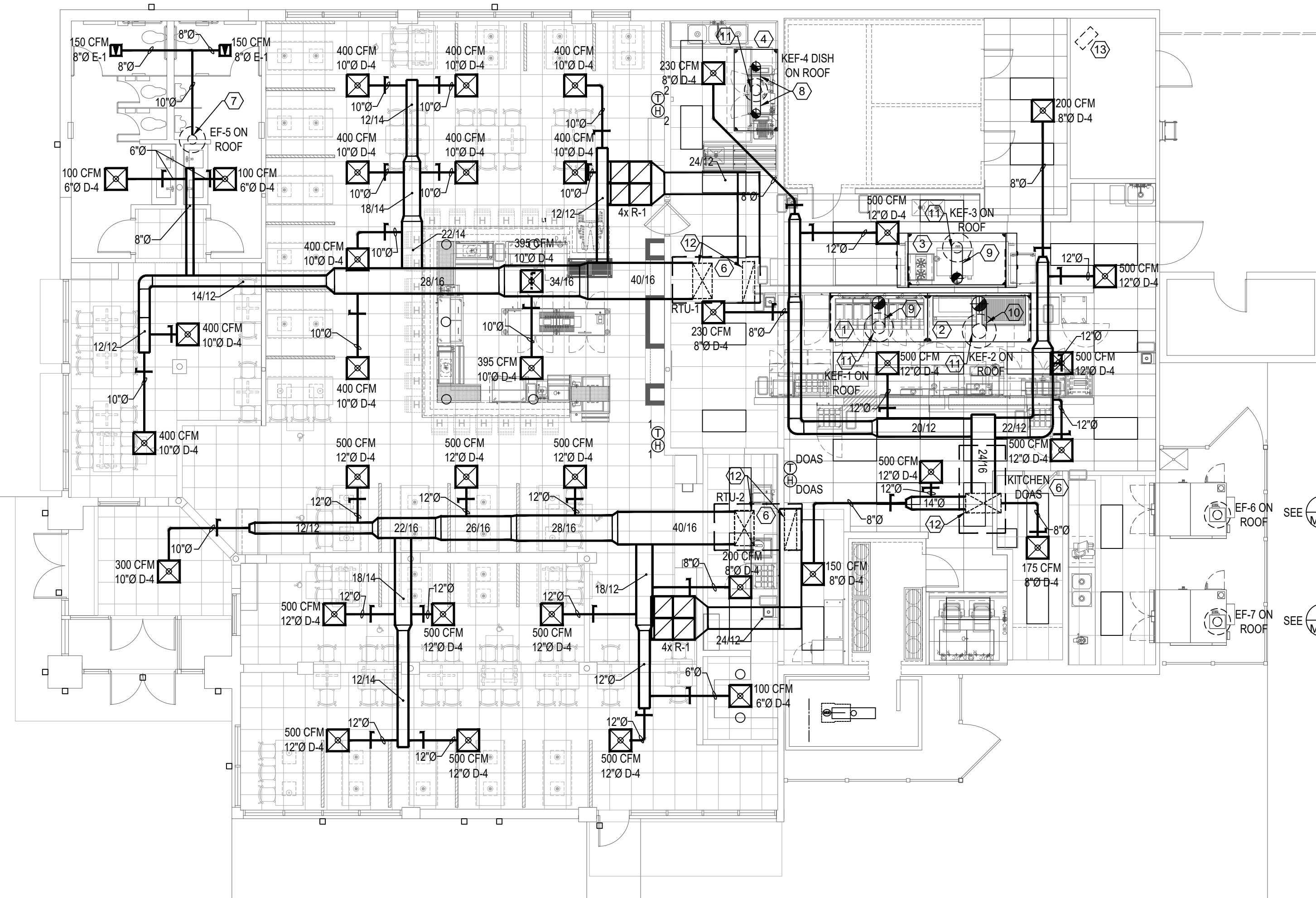
NO.	DATE	PROJECT NO:
1	1-4-22	IA 2119
2	1-25-22	SHEET
3	2-28-22	
4	4-05-22	
5	6-30-22	

GENERAL NOTES THIS SHEET:

- DUCT SIZES SHOWN ARE FREE AREA SIZES. SEE SPECIFICATIONS FOR DUCT MATERIALS AND INSULATION.
- ALL DUCTWORK SHALL BE EXTERNALLY WRAPPED UNLESS NOTED OTHERWISE. INTERNALLY LINE ALL DUCTWORK FOR FIRST 10' OF SUPPLY AND RETURN FROM UNIT. EXPOSED RECTANGULAR DUCTWORK SHALL BE INTERNALLY LINED. ALL RETURN PLENUMS AND TRANSFER DUCTS SHALL BE INTERNALLY LINED.
- PROVIDE VOLUME DAMPERS AT ALL TAPS INTO MAIN DUCT RUNS. PROVIDE VOLUME DAMPERS AT MAIN RETURN AND OUTSIDE AIR DUCTS.
- INSULATE THE BACK OF ALL DIFFUSERS.
- NO FLEX DUCT RUN SHALL EXCEED 25 FEET.
- FLEX DUCT RUN OUTS TO DIFFUSERS SHALL BE SIZED SAME AS DIFFUSER NECK SIZE. FASTEN THE INNER HELIX AND OUTER JACKET OF FLEX DUCTS TO DIFFUSERS AND DUCTS WITH NYLON TIE WRAPS.
- PROVIDE FLEXIBLE CONNECTIONS AT SUPPLY AND RETURN CONNECTIONS TO AC UNITS.
- TOILET AND JANITOR EXHAUST FANS TO BE INTERLOCKED WITH ROOM LIGHT SWITCH.
- ALL NEW DUCTWORK SHALL BE RUN ABOVE CEILINGS AND TIGHT TO STRUCTURE. COORDINATE WITH OTHER TRADES AND MAKE OFFSETS WHERE REQUIRED. PROVIDE DUCTWORK SHOP DRAWINGS. RUN DUCTWORK THROUGH TRUSSES WHERE SPACE IS LIMITED.
- PROVIDE ACCESS TO ALL EQUIPMENT, INCLUDING ACCESS PANELS WHERE REQUIRED.
- ALL EQUIPMENT SHALL BE INSTALLED IN ACCORDANCE WITH MANUFACTURER'S RECOMMENDATIONS. PROVIDE SUPPORTS, DUCTWORK, PIPING, CONTROLS, ETC AS REQUIRED.
- REFER TO ARCHITECTURAL DRAWINGS FOR LOCATION OF FIRE WALLS AND PROVIDE FIRE DAMPERS IN ALL RATED WALLS AND FLOORS. PROVIDE FIRE DAMPERS IN ALL OUTSIDE AIR INTAKES.
- PROVIDE DUCT DETECTORS IN THE SUPPLY AND RETURN FOR ALL AIR UNITS 2000 CFM AND OVER. PROVIDE FIRESTATS FOR ALL FANS 600 CFM AND OVER.
- PROVIDE THERMOSTATS AND CONTROL WIRING FOR ALL AC AND FAN SYSTEMS SHOWN ON DRAWINGS.
- PROVIDE TEST AND BALANCE FOR ALL AC AND FAN SYSTEMS.
- PROVIDE INSULATED PLENUM BOXES (MINIMUM 12" DEEP UNLESS OTHERWISE NOTED) AT ALL LOUVERS FOR DUCT CONNECTIONS.
- PROVIDE INSULATED CONDENSATE DRAIN PIPING FOR ALL AC SYSTEMS.
- ALL REFRIGERATION PIPING SHALL BE SIZED AND INSTALLED PER MANUFACTURER'S RECOMMENDATIONS. INSULATE ALL PIPING FOR HEAT PUMP SYSTEMS. FOR LONG REFRIGERANT PIPING RUNS, CONSULT EQUIPMENT MANUFACTURER FOR SPECIFIC INSTALLATION REQUIREMENTS.
- KITCHEN EXHAUST DUCT SHALL BE CAPTIVEAIRE ETL LISTED DOUBLE WALLED GREASE DUCT. DISHWASHER EXHAUST DUCT TO BE CAPTIVEAIRE ETL LISTED SINGLE WALLED GREASE DUCT.
- SEE M3.0 AND M3.1 FOR DUCTWORK DETAILS.
- RTU CONTROLLER AND KEY RESETS ARE TO BE LOCATED IN THE MANAGER'S OFFICE.

SPECIFIC NOTES THIS SHEET:

- HOOD 1. SEE M4 SHEETS FOR DETAILS.
- HOOD 2. SEE M4 SHEETS FOR DETAILS.
- HOOD 3. SEE M4 SHEETS FOR DETAILS.
- HOOD 4. SEE M4 SHEETS FOR DETAILS.
- CAPTIVEAIRE FACTORY DESIGNED STAINLESS STEEL ROUND DISTRIBUTION DUCT. COORDINATE EXACT REQUIREMENTS WITH MANUFACTURER. THE DUCT SYSTEM IS OWNER FURNISHED, CONTRACTED RECEIVED AND INSTALLED.
- ROOFTOP UNIT. SEE M4 SHEETS FOR SCHEDULES.
- 10" UP TO EF ON ROOF.
- 10" 18 GA, 304 SS FULLY WELDED DUCT UP TO EF ON ROOF.
- 14" 18 GA, 304 SS FULLY WELDED DUCT UP TO EF ON ROOF.
- 16" 18 GA, 304 SS FULLY WELDED DUCT UP TO EF ON ROOF.
- CONNECT HOOD EXHAUST DUCT TO HOOD EXHAUST COLLAR.
- TRANSITION AND CONNECT TO UNIT OPENING.
- EXISTING GAS UNIT HEATER TO REMAIN.



1 FLOOR PLAN - HVAC
M1.0 1/8" = 1'-0"

1

2

3

4

5

6