

TECHNOLOGY PLAN

SCALE: 1/4" = 1'-0"

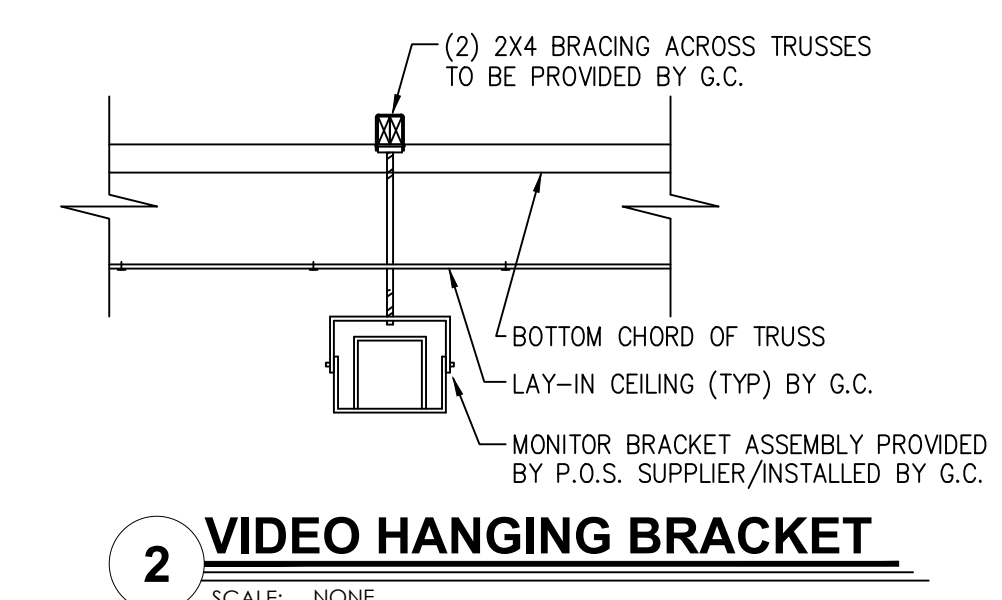
GENERAL NOTES:

- CONTRACTOR TO VERIFY WHICH SYSTEM IS TO BE INSTALLED. REQUIREMENTS CAN VARY DEPENDING ON MANUFACTURER. THE CONTRACTOR IS CAUTIONED TO VERIFY ALL REQUIREMENTS PRIOR TO CONSTRUCTION.
- CONTRACTOR TO PROVIDE ALL RECEPTACLE OUTLETS, CONDUITS AND J-BOXES AS INDICATED ON PLAN.
- CONTRACTOR TO VERIFY AND COORDINATE LOCATION OF VIDEO DISPLAY DEVICES W/ BURGER KING REPRESENTATIVE.
- MAINTAIN P.O.S. CABLES A MIN. OF 12" AWAY FROM ANY FLUORESCENT LIGHT SOURCES ABOVE CEILING.
- ELECTRICAL CONTRACTOR TO IDENTIFY P.O.S. JUNCTION BOXES ABOVE CEILING "GROUND P.O.S. ONLY".

KEYED PLAN NOTES:

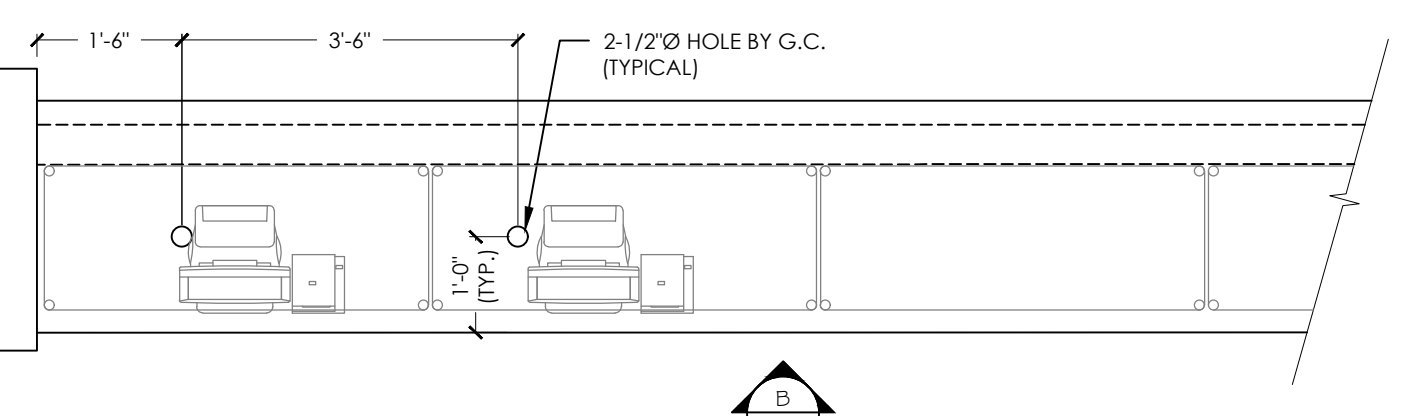
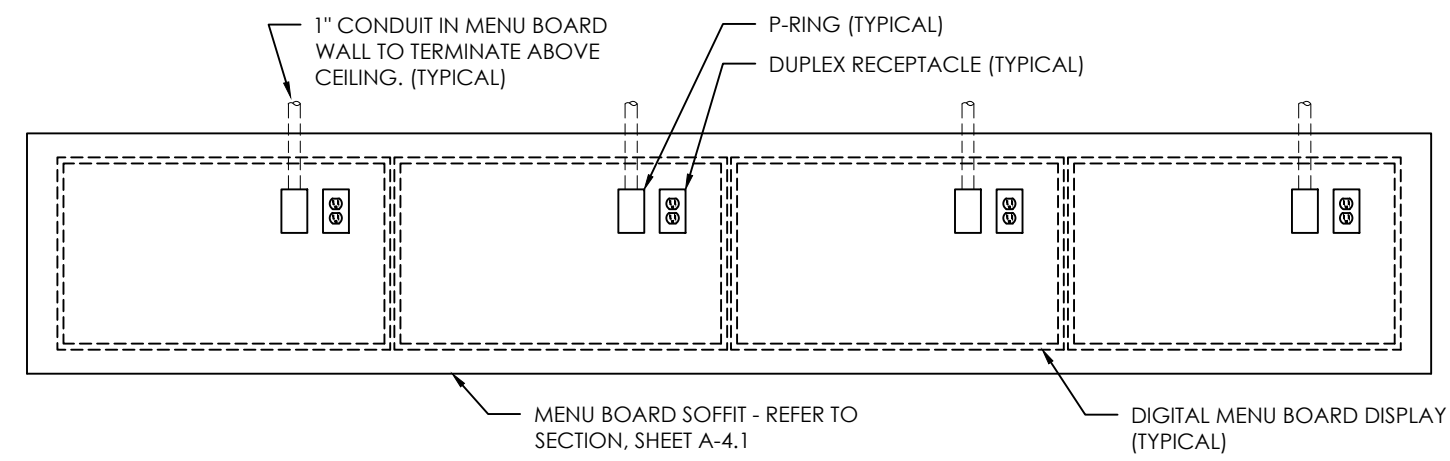
- DISPLAY #1 AND BUMP BAR. PROVIDE 4" CONDUIT FOR VIDEO, BUMP BAR AND PRINTERS. PROVIDE CEILING MOUNTED RECEPTACLES. (TYPICAL FOR DISPLAY #1, #2 AND #3)
- DISPLAY #2 AND BUMP BAR
- DISPLAY #3 AND BUMP BAR
- STOCK LEVEL LIGHT CONTROLLER @ 60" A.F.F.
- TOTAL SERVICE TIME DISPLAY
- GRADE DISPLAY
- CLOCK-RECEPT. IN CHASE
- STOCK LEVEL DISPLAY RECEPT. IN CHASE
- EQUIPMENT MOUNTED RECEPTACLES BY K.E.S. CIRCUITING RUNS BY E.C.
- J-BOX W/ 3/4" CONDUIT @ 84" A.F.F.
- CEILING MOUNTED D/T TIMER WINDOW TIME DISPLAY
- 90" A.F.F. FOR D/T LAND MONITOR.
- P-RING @ 24" A.F.F. W/ 1" CONDUIT TO ABOVE CLG.
- J-BOX W/ 1" CONDUIT TO CLG. FOR PHU DATA CABLE. (LOCATE NEXT TO PHU RECEPT.)
- SECURITY CAMERA (TYPICAL)
- SECURITY MONITOR (TYPICAL)

SYMBOL LEGEND	
DETAIL	DESCRIPTION
	DUPLEX 125V-20A-2 POLE-3 WIRE STRAIGHT BLADE RECEPTACLE OUTLET - WALL MTD. (24" A.F.F., - U.O.N.)
	SINGLE 125V-20A-2 POLE-3 WIRE STRAIGHT BLADE RECEPTACLE OUTLET - WALL MTD. (24" A.F.F., - U.O.N.)
	DRYWALL P-RING
	BUMP-BAR
	TELEPHONE OUTLET FOR P.O.S. MODEM (ALL OUTLETS HOMERUN IN 3/4" CONDUIT TO TELEPHONE BACKBOARD) MOUNT 96" A.F.F.
	P.O.S. PRINTER DEVICE
	P.O.S. REGISTER DEVICE
	VIDEO DISPLAY DEVICE (CEILING MTD.)
	SECURITY CAMERA BY "PRIVD-EYE" CONTACT: LARRY SATLER, 954-581-1756
	SECURITY MONITOR BY "PRIVD-EYE" PROVIDE DUPLEX RECEPTACLE @ 84" A.F.F. (VERIFY) CONNECT TO P.O.S. CIRCUIT

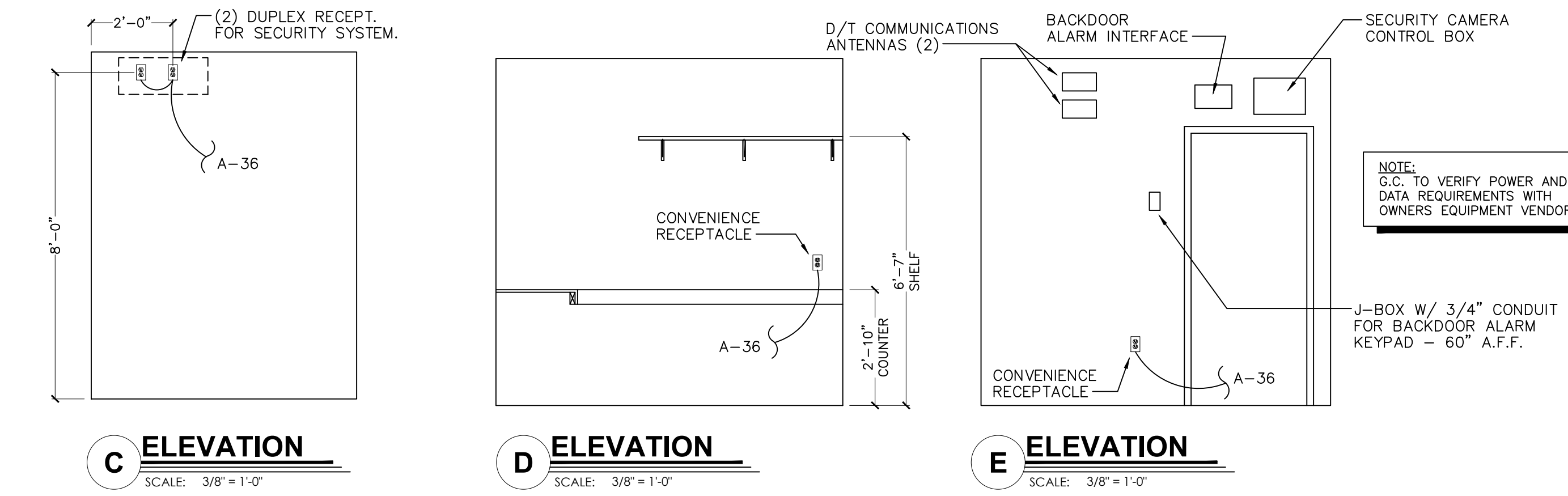
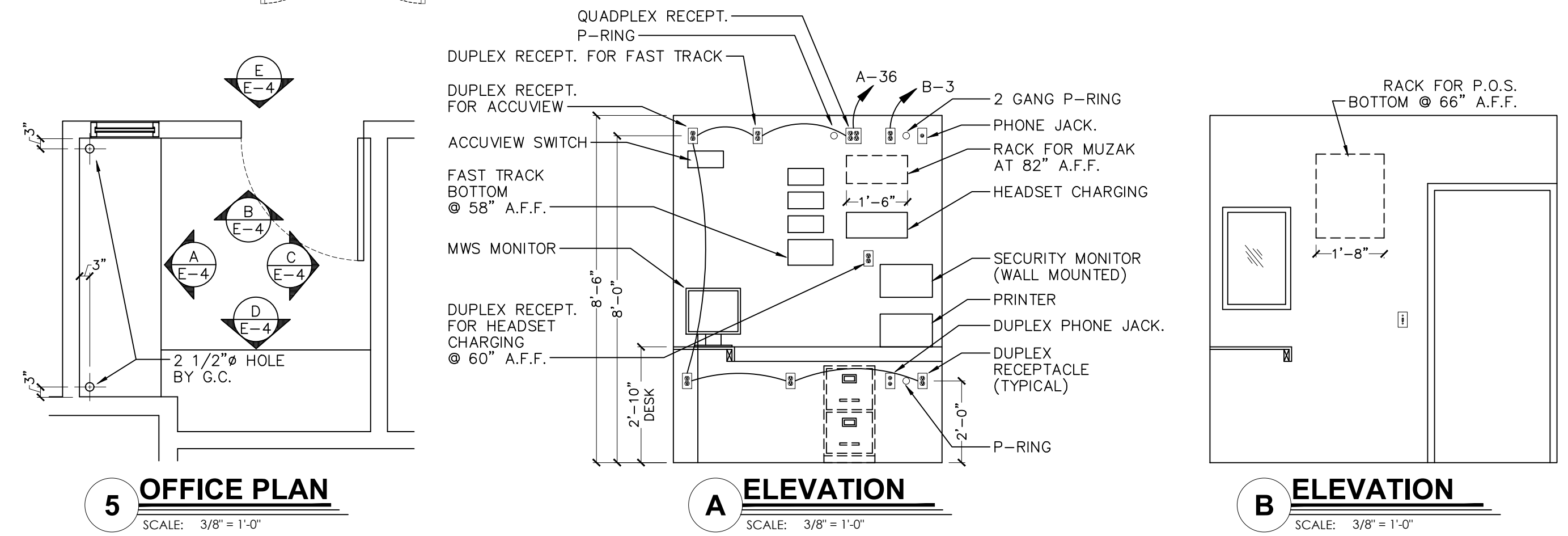
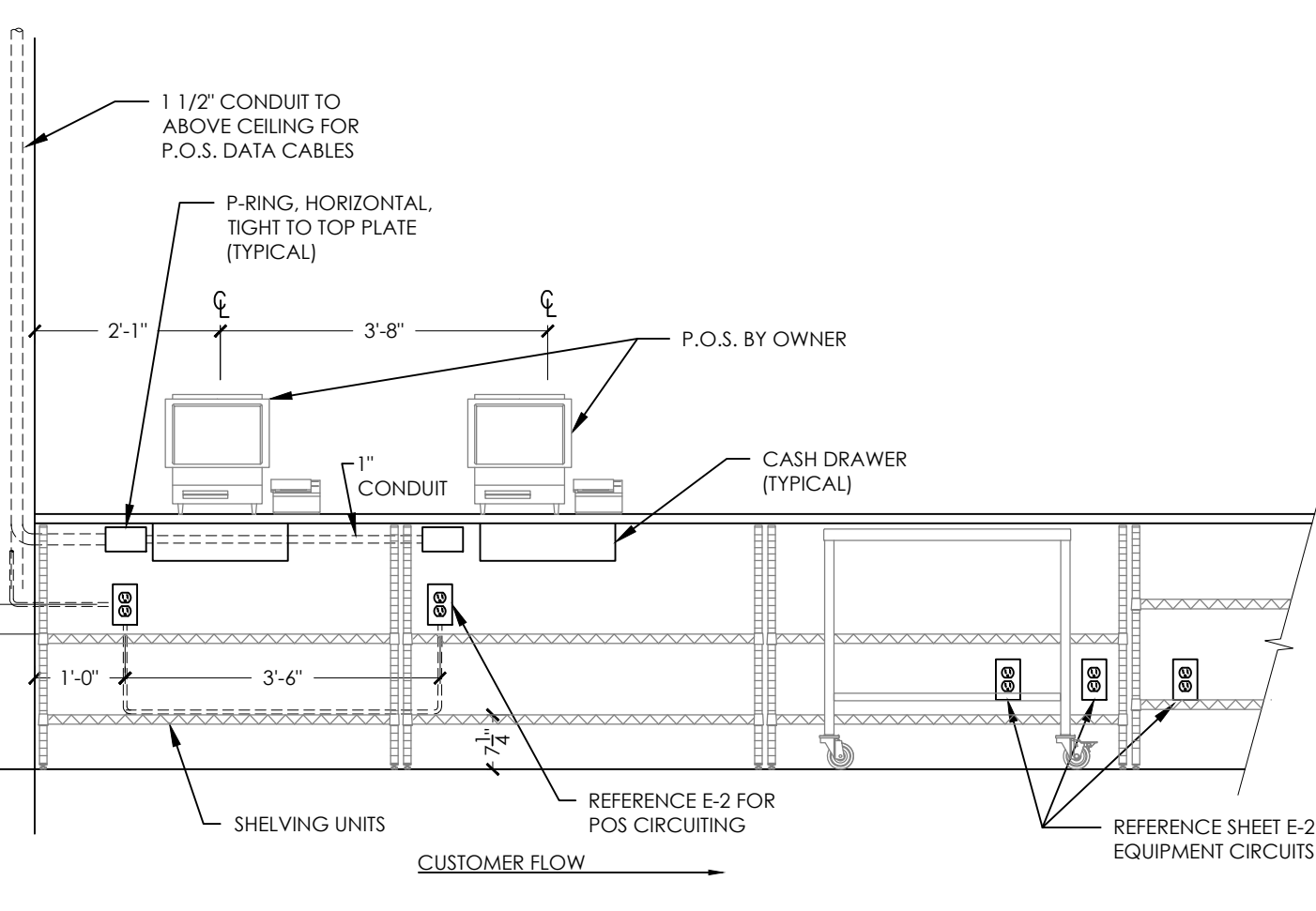


NOTES:

- (1) DUPLEX RECEPTACLE PER SCREEN
- (1) P-RING PER SCREEN WITH 1" CONDUIT TO ABOVE CEILING. DATA CABLE TO RUN TO MEDIA PLAYER(S) IN OFFICE
- VERIFY NUMBER OF SCREENS USED (3 OR 4) PRIOR TO INSTALLATION OF RECEPTACLES AND P-RINGS.
- DETERMINE SCREEN AND MOUNTING BRACKET MODELS PRIOR TO INSTALLATION OF RECEPTACLES AND P-RINGS.
- REFER TO SHEET E-2, POWER PLAN FOR CIRCUITING REQUIREMENTS.



4 SERVICE COUNTER PLAN



Issued:	Date:
A BKC Approval	10/29/2021
B Permit Set	1/21/2022
C Bid Set	1/24/2022
D Construction Set	3/14/2022
E	

Revisions:	Date:
1 Addendum #1	02/08/22
2	
3	
4	
5	
6	
7	
8	
9	

Seal PROJECT ARCHITECT/ENGINEER DATE

PROJECT LEAD DATE

PROJECT DESIGNER DATE

Copyright © 2022
APD Engineering & Architecture, LLC

Drawing Alteration
It is a violation of law for any person, unless acting under the direction of a Licensed Architect, Professional Engineer, Landscape Architect, or Land Surveyor to alter any item on this document in any way. Any licensee who offers this document is required by law to affix his or her seal and to add the notation "Altered By" followed by his or her signature and the specific description of the alteration or revision.

DO NOT SCALE PLANS
Copying, Printing, Software and other processes required to produce these prints can stretch or shrink the actual paper or layout. Therefore, scaling of this drawing may be inaccurate. Contact APD E&A with any need for additional dimensions or clarifications.

APD ENGINEERING ARCHITECTURE
615 Fishers Run Victor, NY 14564
585.742.2222 - www.apd.com

Ampler Development LLC
4700 Falls of Neuse Rd
Suite 400
Raleigh, NC 27609
phone: (513) 484-0965

Burger King Inc.
Store #
322 Pottstown Ave
Pennsburg, PA 18073
Montgomery County
Project Name & Location:

Technology Plan	
Drawing Name:	
Date: 11/8/2021	Project No. 21-0327
Type: ROC-2502T	
Drawn By: MK	E-4
Scale: As Noted	Drawing No.