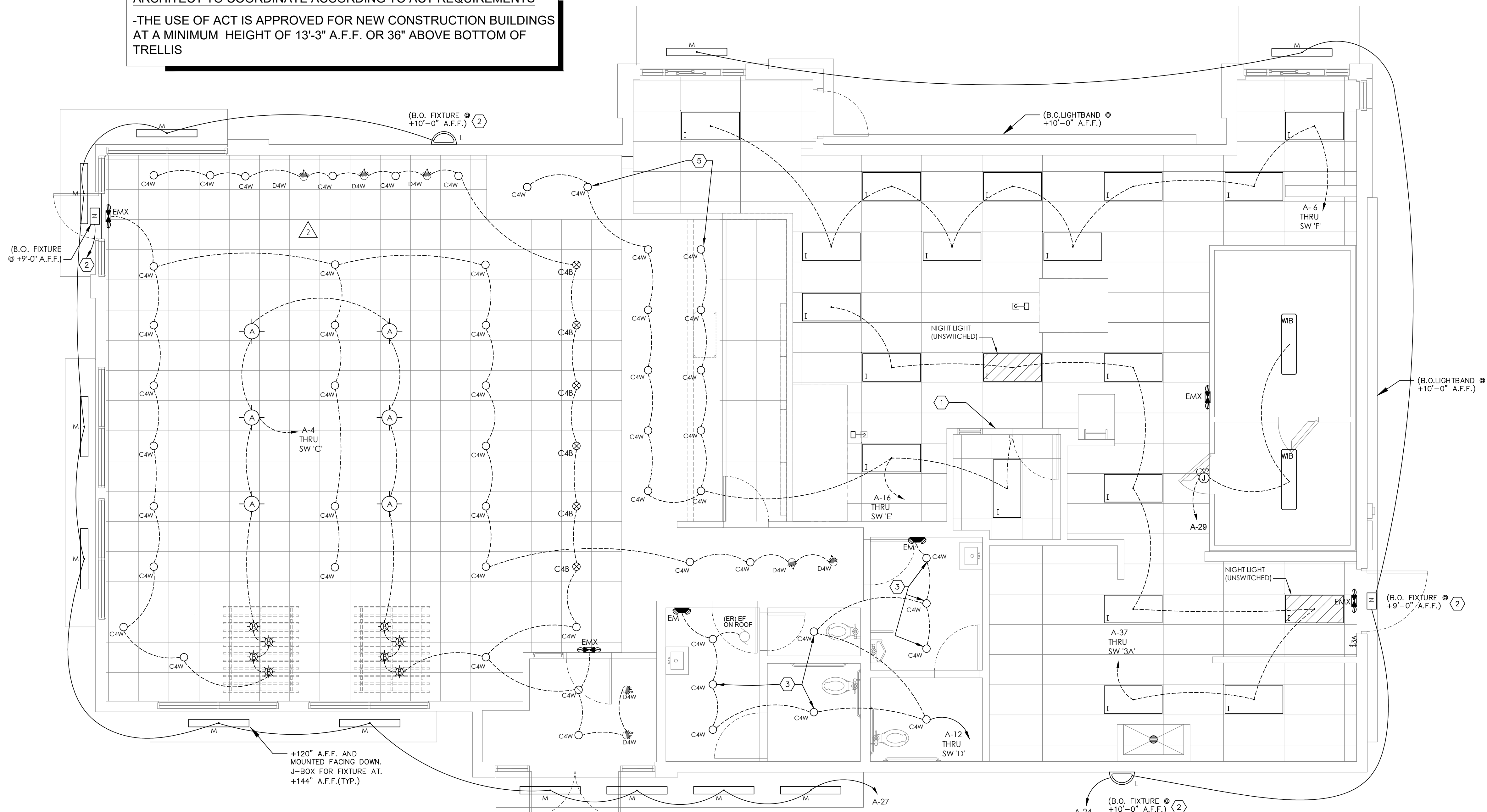


ARCHITECT TO COORDINATE ACCORDING TO ACT REQUIREMENTS  
 -THE USE OF ACT IS APPROVED FOR NEW CONSTRUCTION BUILDINGS AT A MINIMUM HEIGHT OF 13'-3" A.F.F. OR 36" ABOVE BOTTOM OF TRELLIS



1 Electrical Lighting Plan  
 SCALE: 1/4" = 1'-0"

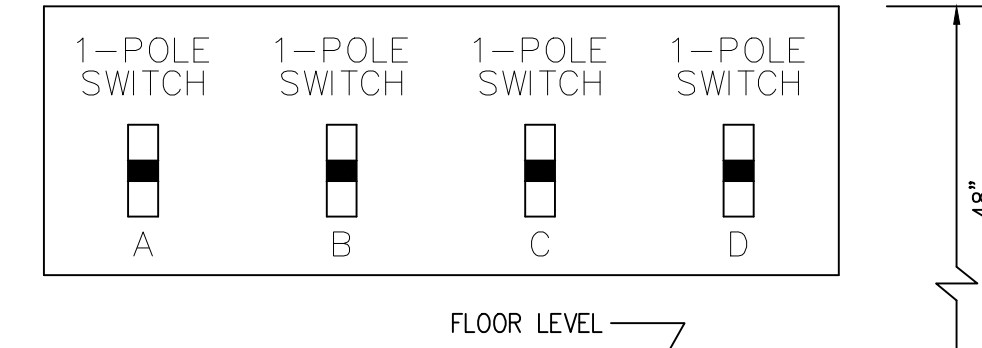
**GENERAL NOTES:**

- A. REFER TO SHEET E-1.1 FOR LIGHT FIXTURE SPECIFICATIONS
- B. SEE ARCHITECTURAL REFLECTED CEILING PLAN FOR EXACT LOCATION AND MOUNTING HEIGHTS OF LIGHT FIXTURES. COORDINATE FIXTURE LOCATIONS WITH DECOR DRAWINGS.
- C. ALL WORK AND MATERIALS SHALL BE BY THE ELECTRICAL CONTRACTOR UNLESS NOTED OTHERWISE.
- D. MC CABLE ONLY PERMITTED FOR LIGHT WHIPS. ALL OTHER TO BE E.M.T. CONDUIT IN CEILING AND WALLS - RIGID CONDUIT UNDER SLAB.
- E. PROVIDE JUNCTION BOXES AT LIGHT FIXTURES PER MANUFACTURERS REQUIREMENTS. (TYPICAL FOR ALL LIGHTING FIXTURES)
- F. WHERE TRUSSES ARE EXPOSED, RUN ALL ELECTRICAL CONDUITS ABOVE THE BOTTOM CHORD OF THE TRUSS.

**KEYED NOTES:**

- 1. SWITCH BANK: REFERENCE DETAIL #1, THIS SHEET.
- 2. WIRE WALL PACK THROUGH PHOTO CELL. ELECTRICAL CONTRACTOR TO PROVIDE "PARAGON" PHOTOCELL CW 201-00 MOUNTED ON ROOF FACING NORTH. MAKE ADJUSTMENTS FOR ANY AMBIENT LIGHT.
- 3. NOT USED.
- 4. ELECTRICAL CONTRACTOR TO COORDINATE WITH THE DRIVE THROUGH SIGN SUPPLIER FOR EXACT ELECTRICAL REQUIREMENTS.
- 5. ALL LIGHT FIXTURES OVER FOOD SERVICE AREA TO BE PROVIDED WITH LENS.

SYMBOL LEGEND	
SYMBOL	DESCRIPTION
<b>SWITCHES</b>	
⌋	TOGGLE SWITCH - SINGLE POLE
⌋ <sub>3</sub>	TOGGLE SWITCH - THREE POLE



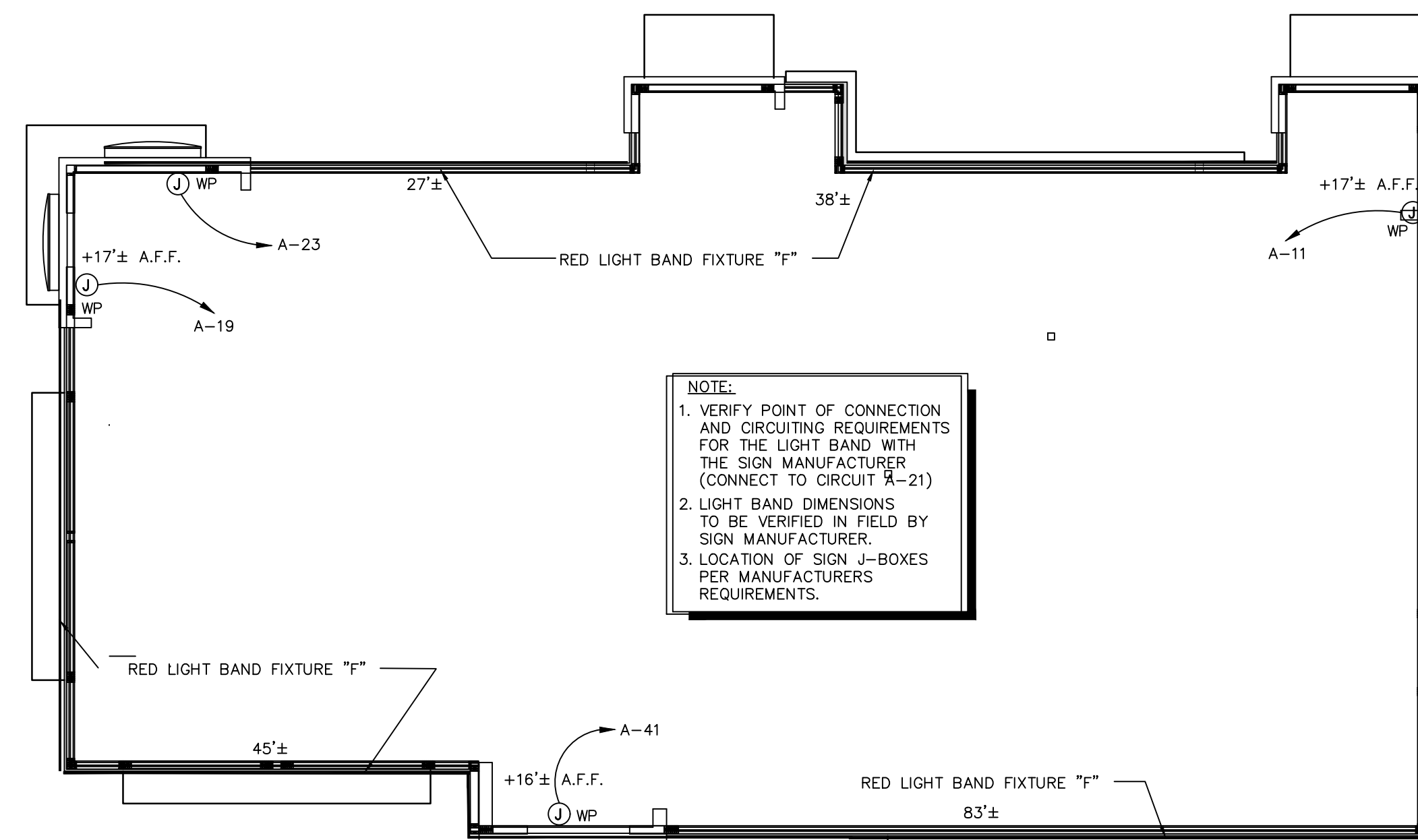
1 SWITCH BANK DETAIL  
 SCALE: NONE

NOTE: NUMBER OF SWITCHES REQUIRED MAY VARY BASED ON LIGHTING CONFIGURATION - VERIFY REQUIREMENTS.

3 Switch Bank Detail  
 SCALE: None

**LIGHTING FIXTURE NOTES**

- 1. CONTRACTOR SHALL CHECK AND VERIFY FIXTURE QUANTITY AND MAKE PROPER ADJUSTMENTS FOR ANY CHANGES IN PLAN SHOWN DUE TO ADDITIONAL REQUIREMENTS SUCH AS VESTIBULES, LOCAL CODES, ETC.
- 2. SEE SITE LIGHTING DRAWING FOR AREA LIGHTING POLES SPECIFICATIONS AND DETAILS



NOTE:  
 1. VERIFY POINT OF CONNECTION AND CIRCUITING REQUIREMENTS FOR THE LIGHT BAND WITH THE SIGN MANUFACTURER (CONNECT TO CIRCUIT A-21)  
 2. LIGHT BAND DIMENSIONS TO BE VERIFIED IN FIELD BY SIGN MANUFACTURER.  
 3. LOCATION OF SIGN J-BOXES PER MANUFACTURERS REQUIREMENTS.

2 Parapet Light Fixture Plan  
 SCALE: 1/8" = 1'-0"

Issued:		Date:
A	BKC Approval	10/29/2021
B	Permit Set	1/21/2022
C	Bid Set	1/24/2022
D	Construction Set	3/14/2022
E		

Revisions:		Date:
1	Addendum #1	02/08/22
2	Addendum #2	02/21/22
3		
4		
5		
6		
7		
8		
9		

Seal	Seal
PROJECT ARCHITECT/ENGINEER	DATE
PROJECT LEAD	DATE
PROJECT DESIGNER	DATE

Copyright © 2022  
 APD Engineering & Architecture, LLC  
 Drawing Alteration  
 It is a violation of law for any person, unless acting under the direction of a Licensed Architect, Professional Engineer, Landscape Architect, or Land Surveyor to alter any item on this document in any way. Any licensee who alters this document is required by law to affix his or her seal and to add the notation "Altered By" followed by his or her signature and the specific description of the alteration or revision.  
 [DO NOT SCALE PLANS]  
 Copying, Printing, Software and other processes required to produce these prints can stretch or shrink the actual paper or layout. Therefore, scaling of this drawing may be inaccurate. Contact APD E&A with any need for additional dimensions or clarifications.



Burger King Inc.  
 Store #  
 322 Pottstown Ave  
 Pennsburg, PA 18073  
 Montgomery County  
 Project Name & Location:

Electrical Lighting Plan  
 Drawing Name:

Date: 11/8/2021	Project No.
Type: ROC-2502T	21-0327
Drawn By: MK	E-1
Scale: As Noted	Drawing No.