

© Copyright 2022- Drawings, specifications, notes, database, computer files, field data, and reports as instruments of service prepared by the Design of Record. As instruments of services, these items remain the property of the Design of Record, who shall retain all statutory and other reserved rights, including the copyright thereto. Any use, reproduction or changes to these documents without written consent of NCA Consultants is a violation of federal copyright laws.

HVAC SYSTEM
N • C • A
CONSULTANTS / GROUP
NATIONAL CORPORATE ACCOUNT SERVICES, INC.

DATE	DESCRIPTION	BY	DATE	DESCRIPTION	BY
T2-07-18	PROTOTYPE USE ONLY	KM			

NOT FOR CONSTRUCTION

DRAWINGS SHOWN ARE FOR PROTOTYPICAL CONSIDERATIONS ONLY. SITE-SPECIFIC DESIGN IS REQUIRED BY BURGER KING CORPORATION AS A COURTESY. NCA CONSULTANTS PROVIDES SITE-SPECIFIC DESIGN WITH SITE-SPECIFIC PROFESSIONAL ENGINEER SEAL UNDER AN AGREEMENT BETWEEN NCA CONSULTANTS AND BURGER KING CORPORATION.
FOR SITE-SPECIFIC DESIGN, ARCHITECTS EMAIL REFLECTED CEILING PLAN, ELEVATIONS, KITCHEN PLANS, FLOOR PLAN, SITE PLAN, EXTERIOR ELEVATIONS, AND ROOF STRUCTURAL PLAN TO DESIGN@NCACONSULTANTS.COM
TO CONTACT THE NCA CONSULTANTS BY PHONE, CALL TOLL-FREE (877) 530-0078.

Issued:	Date:
A BKC Approval	10/29/2021
B Permit Set	1/21/2022
C Bid Set	1/24/2022
D Construction Set	3/14/2022
E	

Revisions:	Date:
1 Addendum #1	02/08/22
2	
3	
4	
5	
6	
7	
8	
9	

Seal PROJECT ARCHITECT/ENGINEER DATE

Seal PROJECT LEAD DATE

PROJECT DESIGNER DATE

Copyright © 2022
APD Engineering & Architecture, LLC
Drawing Alteration
It is a violation of law for any person, unless acting under the direction of Licensed Architect, Professional Engineer, Landscape Architect, or Land Surveyor to alter any item on this document in any way. Any licensee who alters this document is required by law to affix his or her seal and to add the notation "Altered by" followed by his or her signature and the specific description of the alteration or revision.
DO NOT SCALE PLANS
Copying, Printing, Software and other processes required to produce these prints can stretch or shrink the actual paper or layout. Therefore, scaling of this drawing may be inaccurate. Contact APD E&A with any need for additional dimensions or clarifications.

APD

ENGINEERING
ARCHITECTURE

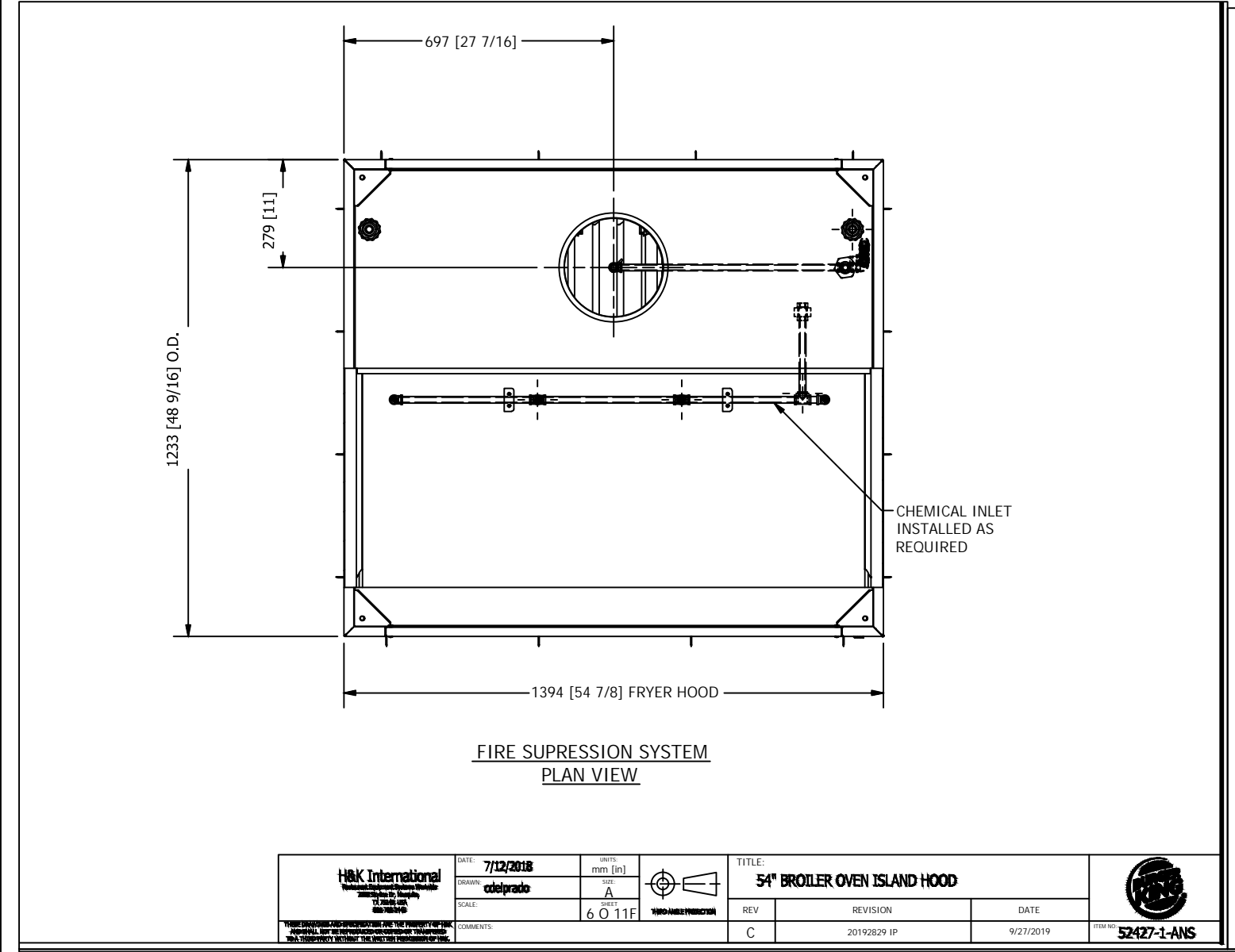
615 Fishers Run Victor, NY 14564
585.742.2222 - www.apd.com

Ampler Development LLC

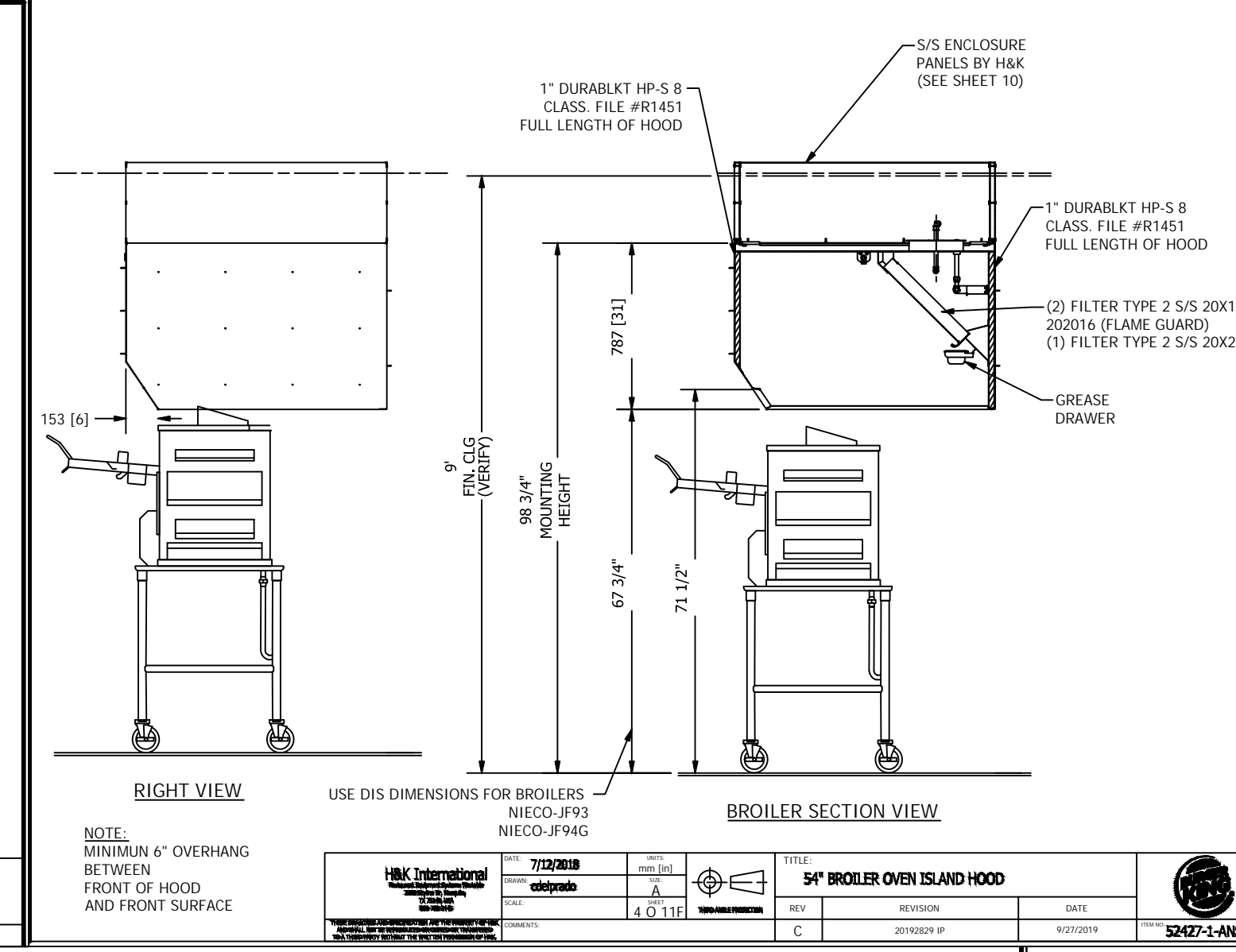
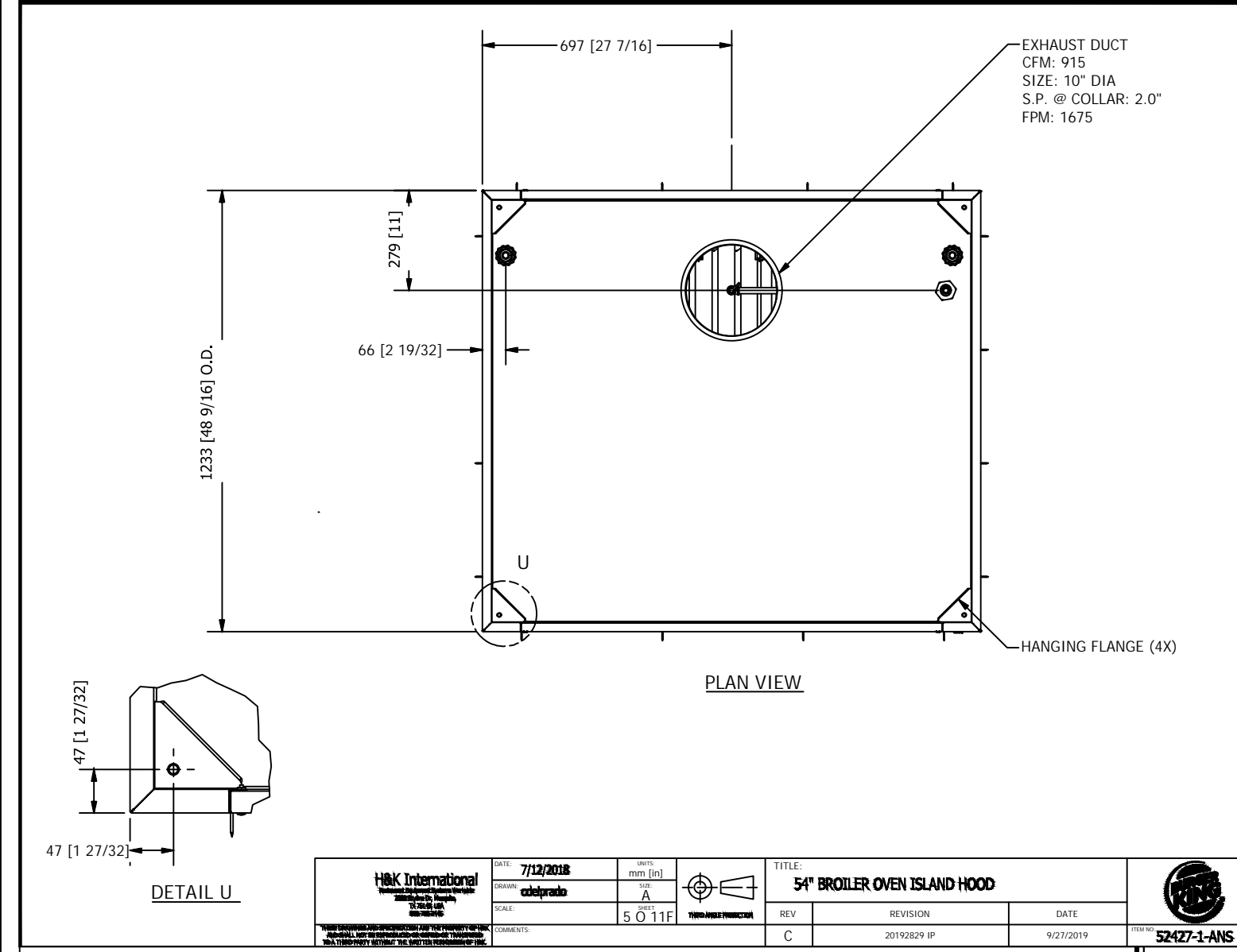
4700 Falls of Neuse Rd
Suite 400
Raleigh, NC 27609
phone: (513) 484-0965

Burger King Inc.
Store #
322 Pottstown Ave
Pennsburg, PA 18073
Montgomery County
Project Name & Location:

Broiler-Fryer Hood Drawings
Drawing Name: Project No.
Date: 11/8/2021 21-0327
Type: ROC-2502T
Drawn By: NPM M-5
Scale: As Noted Drawing No.



BK ROC HOOD/EX FAN/FIRE SYSTEM/HVAC CONTROL MATRIX						
ACTION	EX FAN	ELECTRIC PWR TO COOKING EQUIP.	MECH. GAS VALVE	HVAC UNIST	MAKE UP AIR UNIT (IF APPLICABLE)	COMMENTS
FAN SW. TURNED ON	ON	ON	ON	ON	ON	NOTE: HVAC UNITS MUST BE ON BEFORE EX FAN CAN COME ON
FAN SW. TURNED OFF	OFF	OFF	ON	ON	OFF	
FIRE SYSTEM DISCHARGES	ON	OFF	OFF	OFF	OFF	
SLIPPING FAN BELT	ON	OFF	ON	ON	OFF	PWR TO COOKING EQUIP. OFF VIA CURRENT SENSOR
BROKEN FAN BELT	ON	OFF	ON	ON	OFF	PWR TO COOKING EQUIP. OFF VIA CURRENT SENSOR
POWER OUTAGE	OFF	OFF	ON	OFF	OFF	
HVAC SYSTEM TURNED OFF	OFF	OFF	ON	OFF	OFF	



Contact Information for the Job Site Contractor

Overview
Typically this package provided by H&K International includes the following:
1. One Hood
2. One Metal Fab U.I. Inlet grease exhaust duct system
3. One Loren Cook exhaust fan
4. One Anul fire system, to serve both Broiler & Fryer Hoods.

The shipment from H&K includes the following:
1. Broiler Hood
2. Broiler Hood Enclosure Panels
3. Broiler Hood Wall Flashing
4. One Exhaust Fan Discharge Duct Extension

The Metal-Fab grease exhaust duct systems are dropped shipped from their factory in Wichita, Kansas.
NOTE 1: If optional Square Duct Kit is ordered, the kit will be shipped with the hood.

The Loren Cook exhaust fans and roof curb are dropped shipped from their factory in Springfield, Missouri.

Contact Information
Manufactured by:
H&K International
2200 Skyline Dr.
Mesquite, TX 75149
U.S.A.
Telephone: (214) 818-3500
(214) 818-3596

Distributed by:
H&K International
2200 Skyline Dr.
Mesquite, TX 75149
U.S.A.
Telephone: (214) 818-3500
(214) 818-3596

Part Ordering and Service Returns
Contact: H&K International
2200 Skyline Dr.
Mesquite, TX 75149
U.S.A.
Telephone: (214) 818-3500
(214) 818-3596

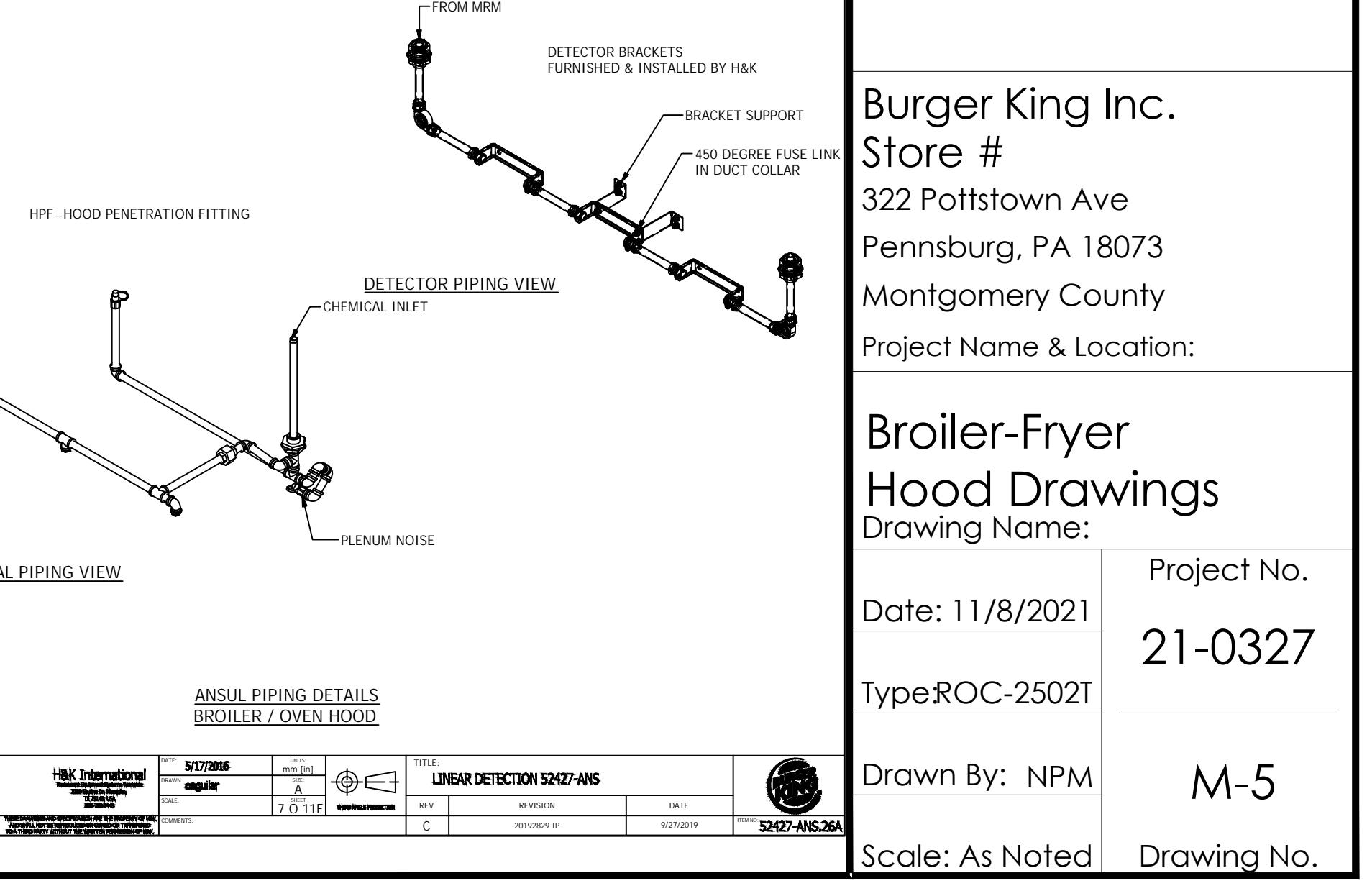
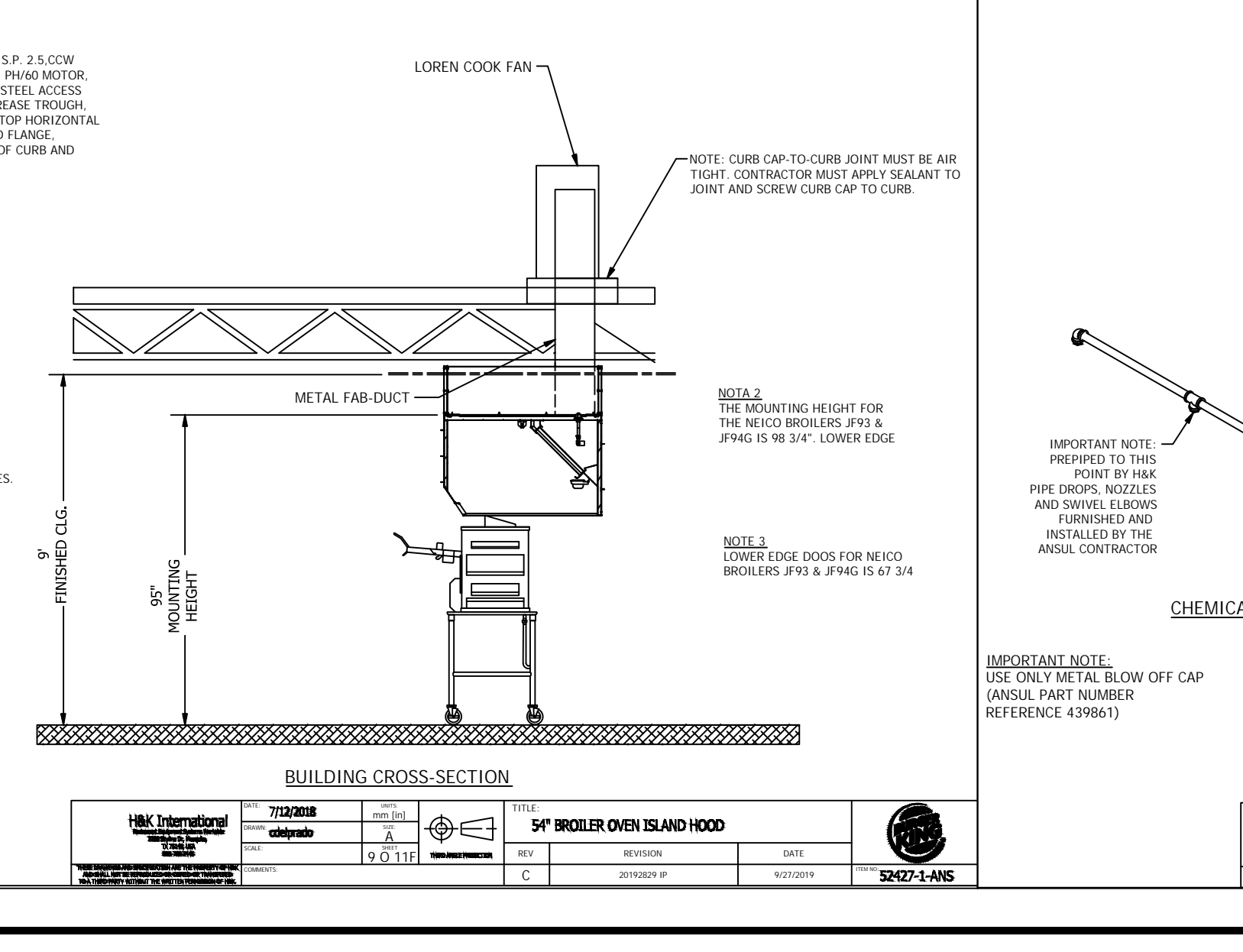
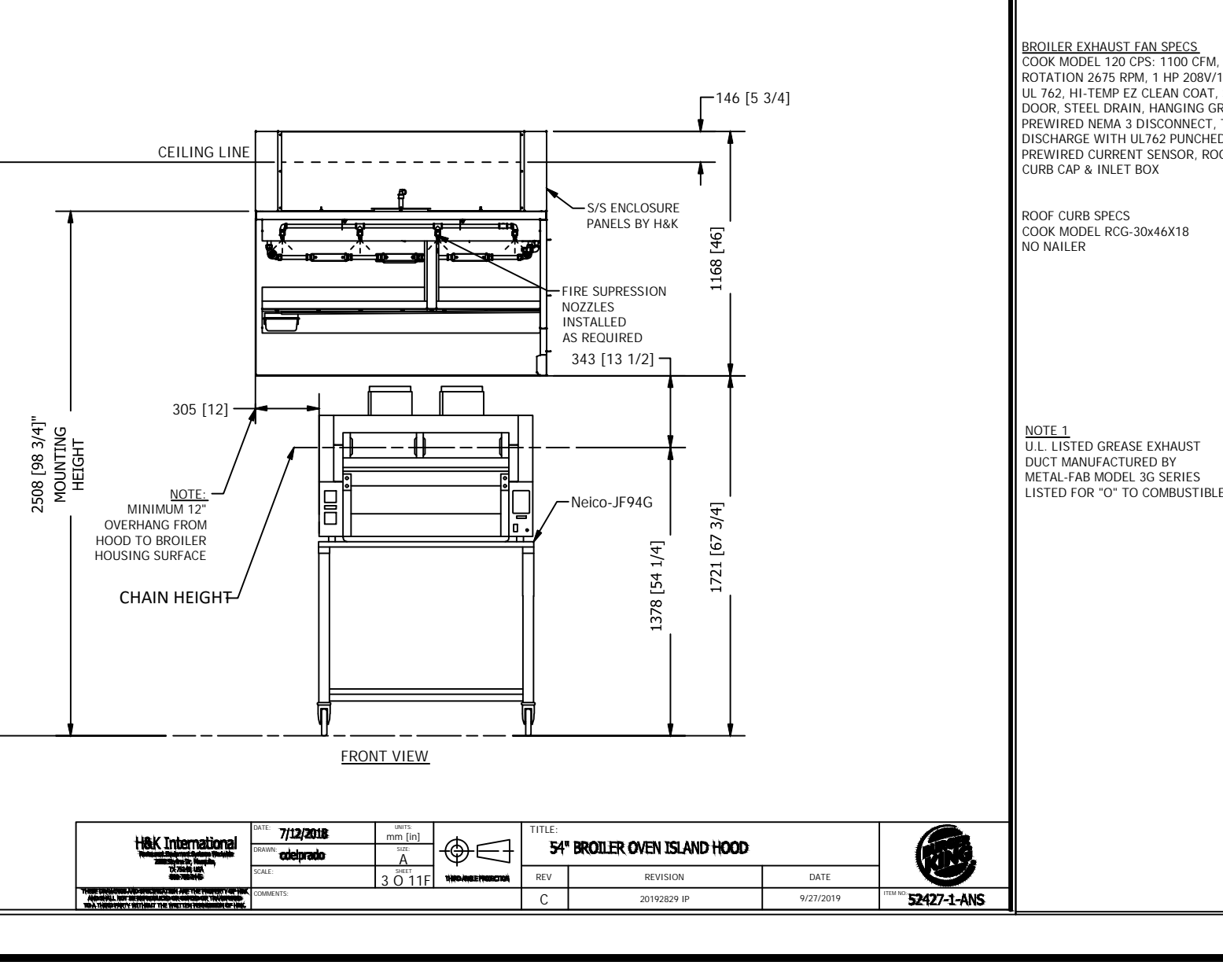
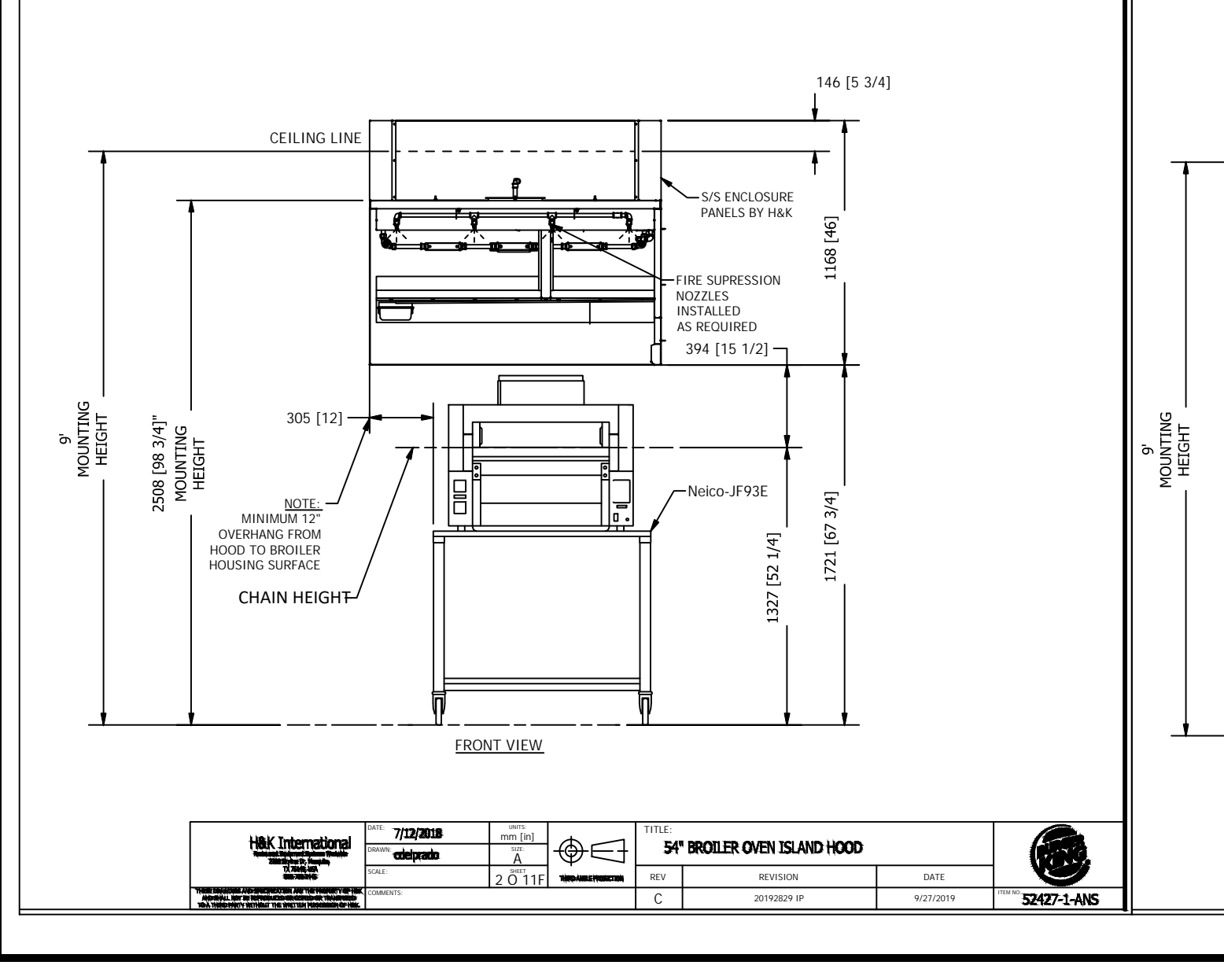
Damages and Shortages
Upon receipt, examine the equipment carefully for any damage. If damage has occurred, notify the carrier and H&K Data Inc. immediately.

Service and parts
Contact: H&K International
2200 Skyline Dr.
Mesquite, TX 75149
U.S.A.
Telephone: (214) 818-3500
(214) 818-3596

Contact Information
Sales Support
Heather Valverde
Telephone: (214) 818-3521
E-mail: heather.valverde@hki.com
Engineering Support
Bryan Tom
Telephone: (214) 818-3580
E-mail: bryan.tom@hki.com
Allen Barton
Telephone: (214) 818-3625
E-mail: allen.barton@hki.com

Metal-Fab Duct Installation Questions
Metal-Fab Inc., Wichita, Kansas
1. Customer Service, Commercial Vent Products: 800-855-8930
Loren Cook Fan Installation Questions
Loren Cook Company, Springfield, Missouri:
T. David Roy Office Phone: 417-869-6474

Anul Fire System Installation Questions
Note: As an option, hood has been prepped for an Anul R-102 fire suppression system. Fire suppression installation and parts are not included in the Anul hood package, but may be purchased as a separate fire item.
If you have questions regarding Anul installations & you do not know your local Anul distributor, contact:
Anul Inc., Marinette, WI
Office Phone: 800-862-8785



PLOTTED: 3/4/2022 8:03 AM by: ampler - bk xxx - pennsburg.pa\building\broiler\dwg\fig.mech