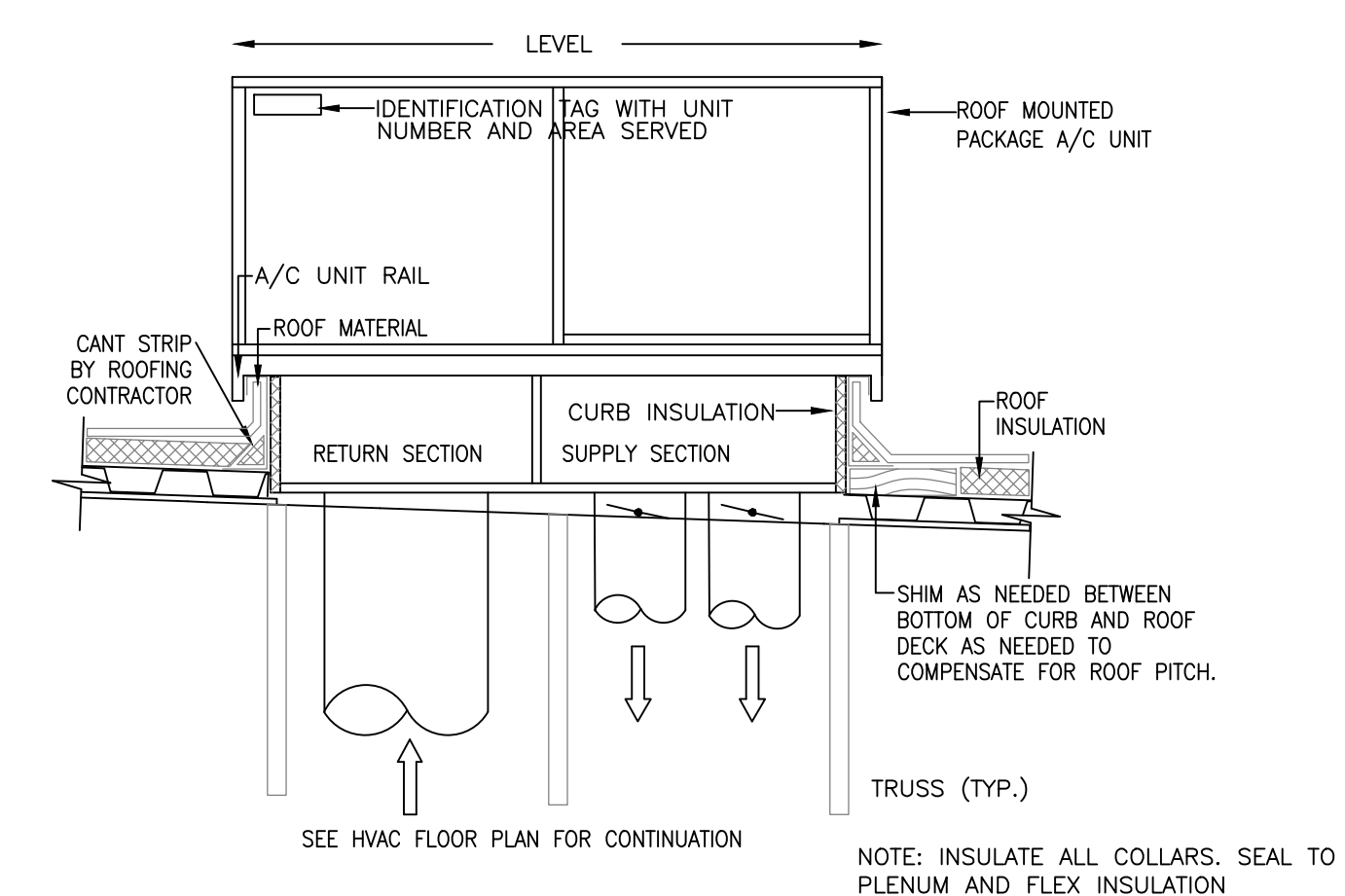
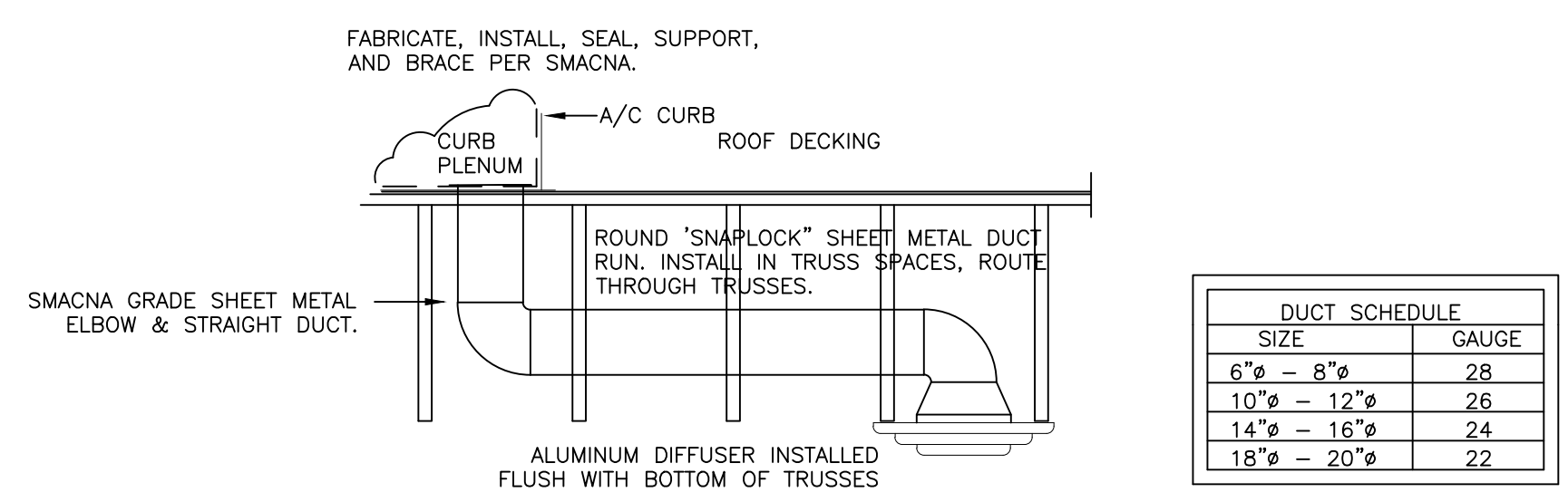


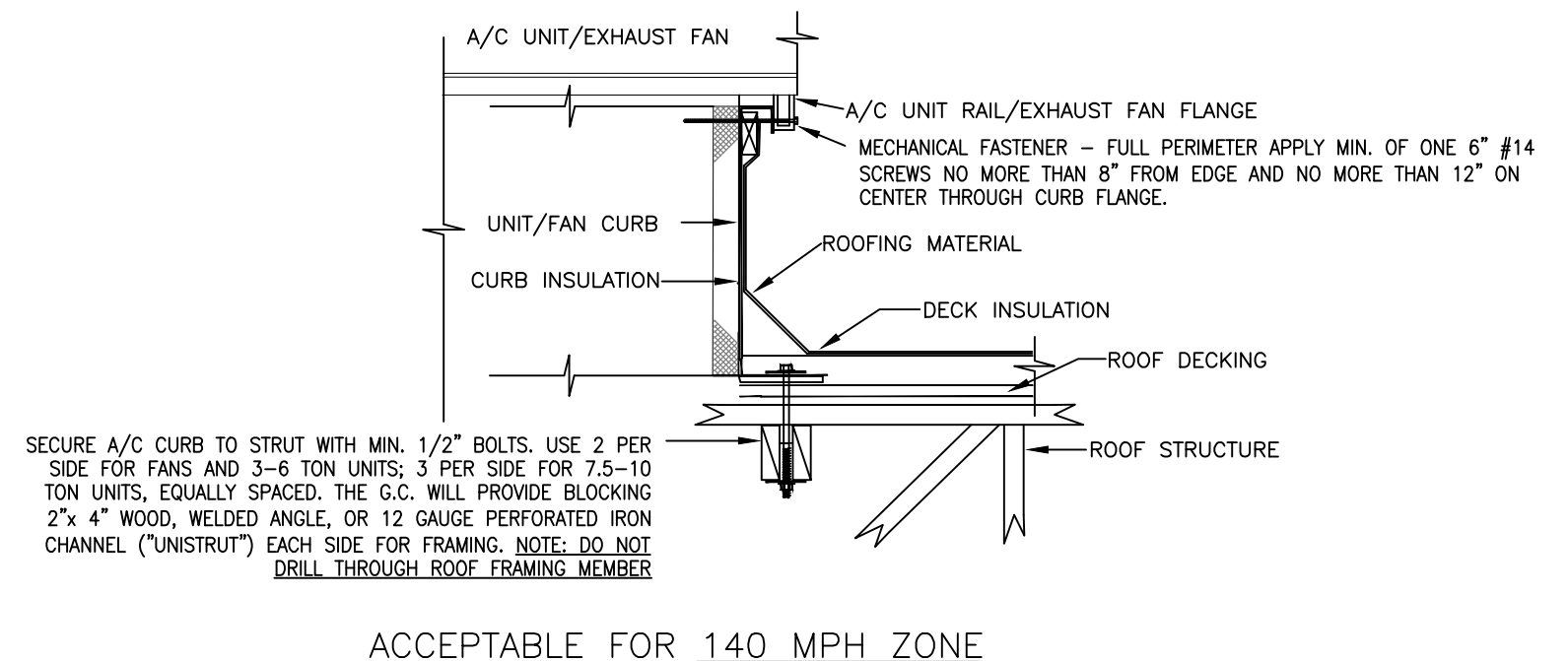
**1 H.V.A.C. ROOF PLAN**  
SCALE: 1/4" = 1'-0"



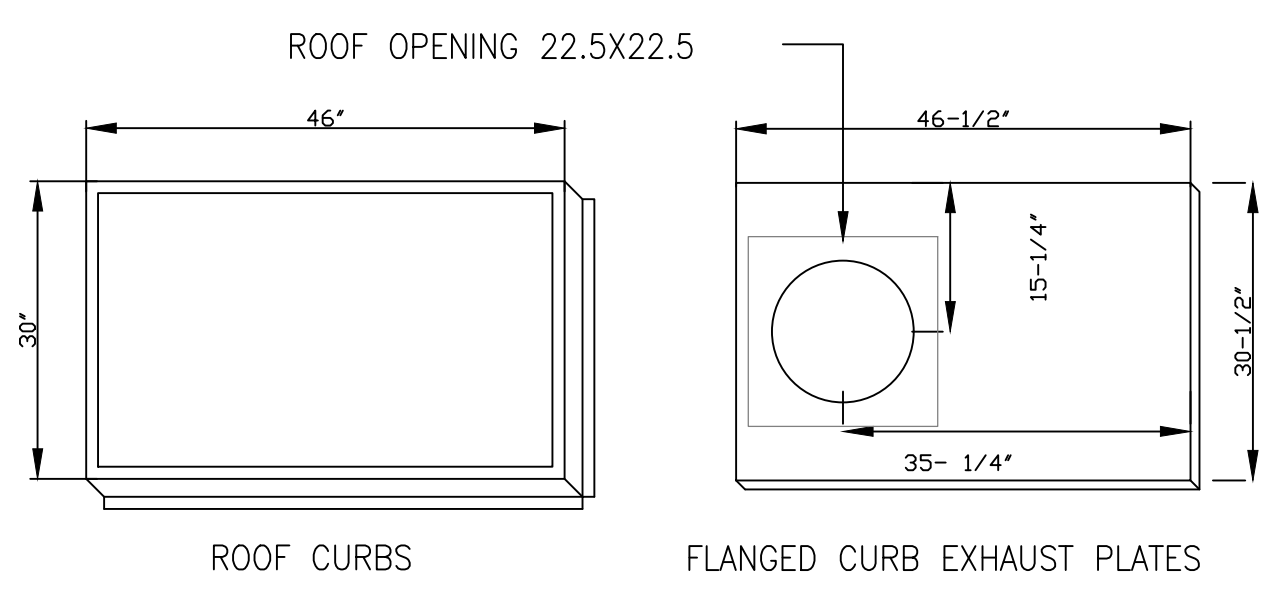
**6 DUCT RISER/LEVELING DETAIL**  
SCALE: NONE



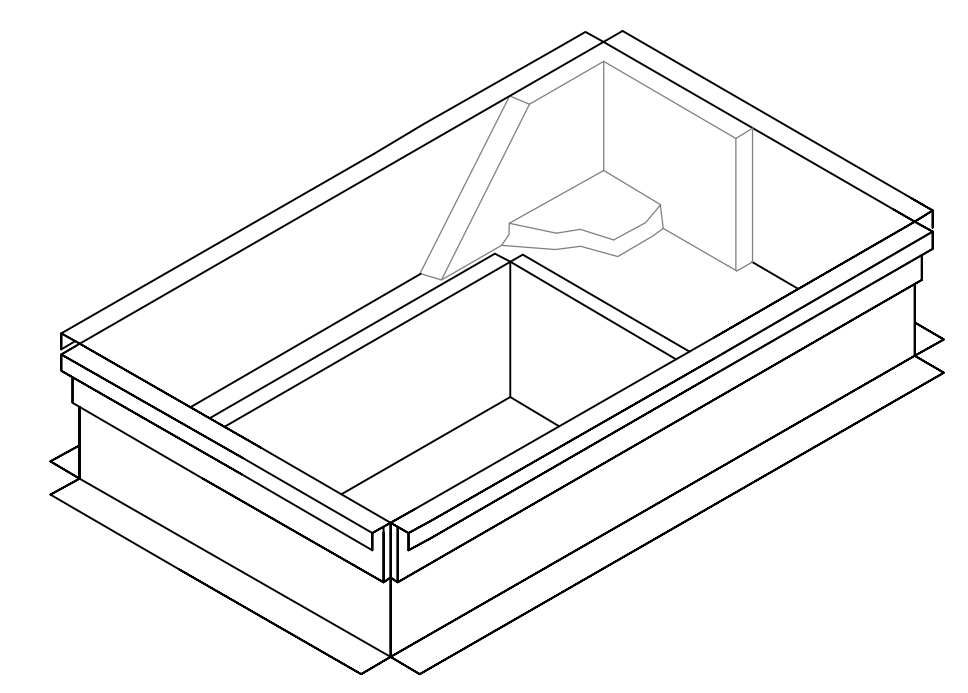
**2 RTU-1,2 DUCT CONNECTION/INSTALL DETAIL**  
SCALE: NONE



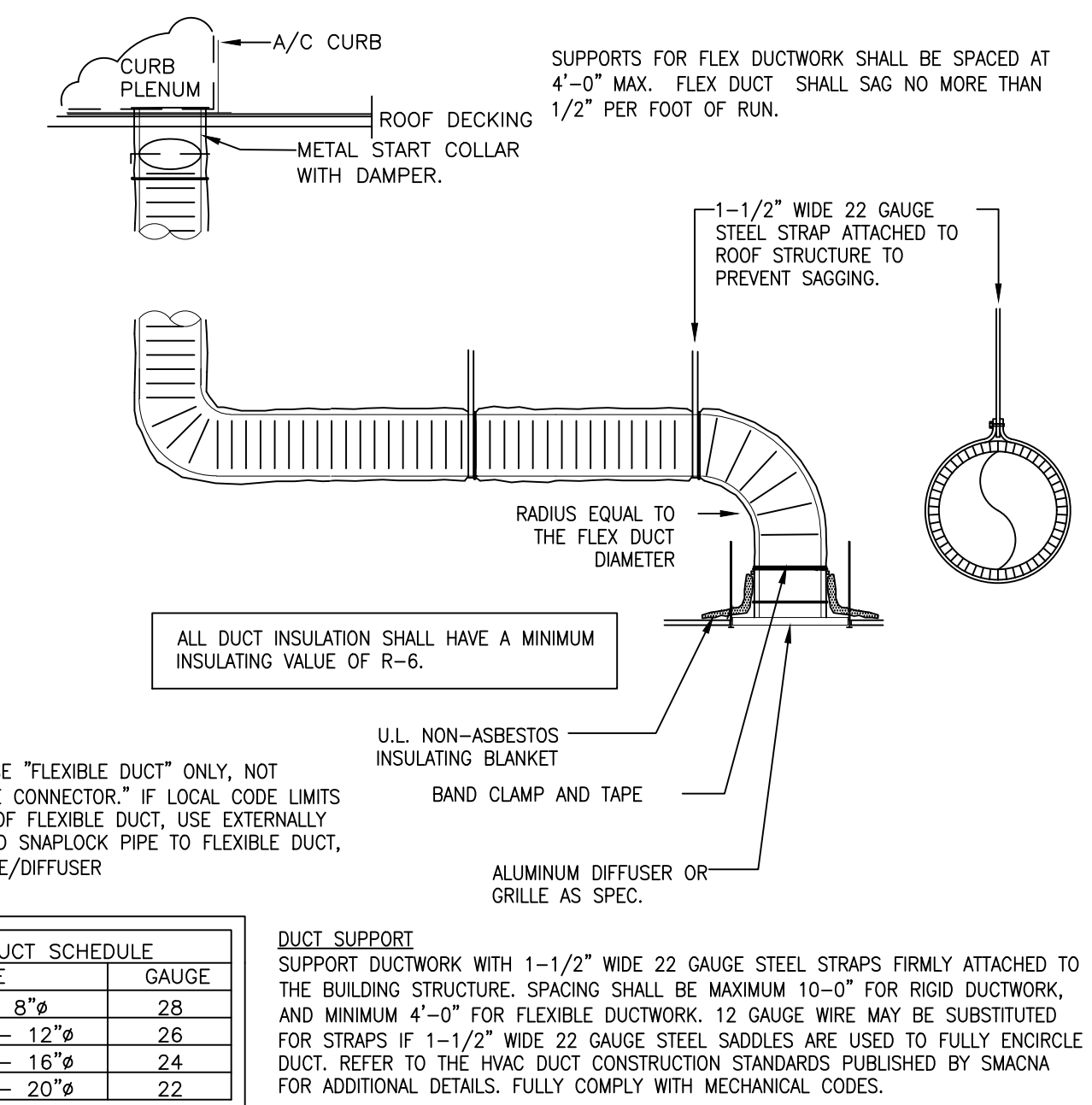
**4 ROOF EQUIPMENT CURB MOUNTING DETAIL**  
SCALE: NONE



**3 EXHAUST FAN CURB/CURB PLATE**  
SCALE: NONE



**5 PLENUMIZED AC CURB DETAIL**  
SCALE: NONE



**7 RIGID FLEXDUCT CONNECTION/INSTALL DETAIL**  
SCALE: NONE

DUCT SCHEDULE	
SIZE	GAUGE
6" - 8"	28
10" - 12"	26
14" - 16"	24
18" - 20"	22

**DUCT SUPPORT**  
SUPPORT DUCTWORK WITH 1-1/2" WIDE 22 GAUGE STEEL STRAPS FIRMLY ATTACHED TO THE BUILDING STRUCTURE. SPACING SHALL BE MAXIMUM 10'-0" FOR RIGID DUCTWORK, AND MINIMUM 4'-0" FOR FLEXIBLE DUCTWORK. 12 GAUGE WIRE MAY BE SUBSTITUTED FOR STRAPS IF 1-1/2" WIDE 22 GAUGE STEEL SADDLES ARE USED TO FULLY ENIRCLE DUCT. REFER TO THE HVAC DUCT CONSTRUCTION STANDARDS PUBLISHED BY SMACNA FOR ADDITIONAL DETAILS. FULLY COMPLY WITH MECHANICAL CODES.

Issued:	Date:
A BKC Approval	10/29/2021
B Permit Set	1/21/2022
C Bid Set	1/24/2022
D Construction Set	3/14/2022
E	

Revisions:	Date:
1 Addendum #1	02/08/22
2	
3	
4	
5	
6	
7	
8	
9	

Seal PROJECT ARCHITECT/ENGINEER DATE  
PROJECT LEAD DATE  
PROJECT DESIGNER DATE

Copyright © 2022 APD Engineering & Architecture, LLC  
Drawing Alteration  
It is a violation of law for any person, unless acting under the direction of a Licensed Architect, Professional Engineer, Landscape Architect, or Land Surveyor to alter any item on this document in any way. Any licensee who alters this document is required by law to affix his or her seal and to add the notation "Altered By" followed by his or her signature and the specific description of the alteration or revision.  
DO NOT SCALE PLANS  
Copying, Printing, Software and other processes required to produce these prints can stretch or shrink the actual paper or layout. Therefore, scaling of this drawing may be inaccurate. Contact APD E&A with any need for additional dimensions or clarifications.

**APD ENGINEERING ARCHITECTURE**  
615 Fishers Run Victor, NY 14564  
585.742.2222 - www.apd.com

**Ampler Development LLC**  
4700 Falls of Neuse Rd Suite 400 Raleigh, NC 27609  
phone: (919) 484-0965

Burger King Inc. Store # 322 Pottstown Ave  
Pennsburg, PA 18073  
Montgomery County  
Project Name & Location:

**HVAC Roof Plan & Details**  
Drawing Name: Project No. 21-0327  
Date: 11/8/2021 Type: ROC-2502T  
Drawn By: NPM M-2  
Scale: As Noted Drawing No.