

GENERAL ROOFING NOTES:

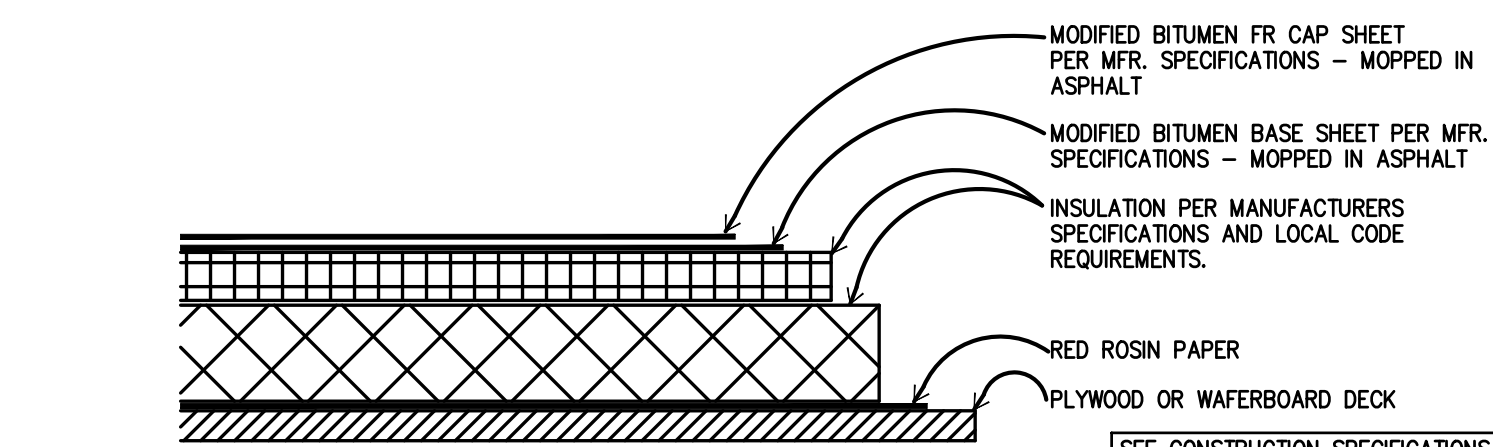
1. ROOFING SUBCONTRACTOR TO COORDINATE LOCATION OF H.V.A.C. UNITS AND ROOF TOP ACCESSORIES WITH STRUCTURAL, MECHANICAL AND ELECTRICAL DRAWINGS FOR PLACEMENT AND TAPERED RIGID INSULATION BOARD LAY-OUT AND SUBSEQUENT INSTALLATION IN ORDER TO AVOID PONDING WATER CONDITIONS ATTRIBUTABLE TO BOARD LAY-OUT ISSUES.
2. ROOF SYSTEMS SPECIFIED SHALL BE APPLIED ONLY BY MANUFACTURER APPROVED APPLICATOR IN ORDER TO MEET GUARANTEE REQUIREMENTS.
3. COORDINATE LOCATION OF MECHANICAL UNITS WITH STRUCTURAL AND MECHANICAL DRAWINGS.
4. HVAC CONDENSATE LINES TO TERMINATE AT DRAIN OR AS REQUIRED BY LOCAL CODE.
5. REFER TO STRUCTURAL AND M-E-P DRAWINGS FOR ADDITIONAL INFORMATION.
6. ALL CURBS AND PIPE PENETRATIONS SHALL HAVE A MINIMUM OF 16" CLEAR FROM EACH OTHER FOR ROOF FLASHING PURPOSES. ALL EQUIPMENT SHALL HAVE A MINIMUM OF 16" CLEAR FROM ALL ADJACENT PARAPETS. ALL HVAC MOUNTED EQUIPMENT (DISCONNECT BOXES, GFCI, PIPE SUPPORTS) SHALL NOT BE CLOSER THAN 16" FROM EACH OTHER OR CURB. NO UNISTRUT PIPE SUPPORTS SHALL BE USED AS VERTICAL MEMBERS FOR MOUNTING EQUIPMENT TO ROOF SURFACE.
7. PONDING WATER IS DEFINED AS WATER THAT DOES NOT DRAIN OR DISSIPATE FROM THE ROOF WITHIN 48 HOURS AFTER PRECIPITATION.
8. CONTRACTOR SHALL "SUGAR-IN" ALL ASPHALT. BLEED-OUT ON PLYS WITH ADDITIONAL GRANULES TO MATCH EXISTING COLORATION OF THE MINERAL SURFACE CAP SHEET.
9. ALL FLASHING CEMENTS, ASPHALTS, PRODUCTS AND ACCESSORIES SHALL BE APPROVED BY ROOFING MANUFACTURER WITH THE MANUFACTURER'S BRAND. ALL ASPHALTS SHALL BE AMERICAN MANUFACTURED PRODUCTS.

KEYED NOTES:

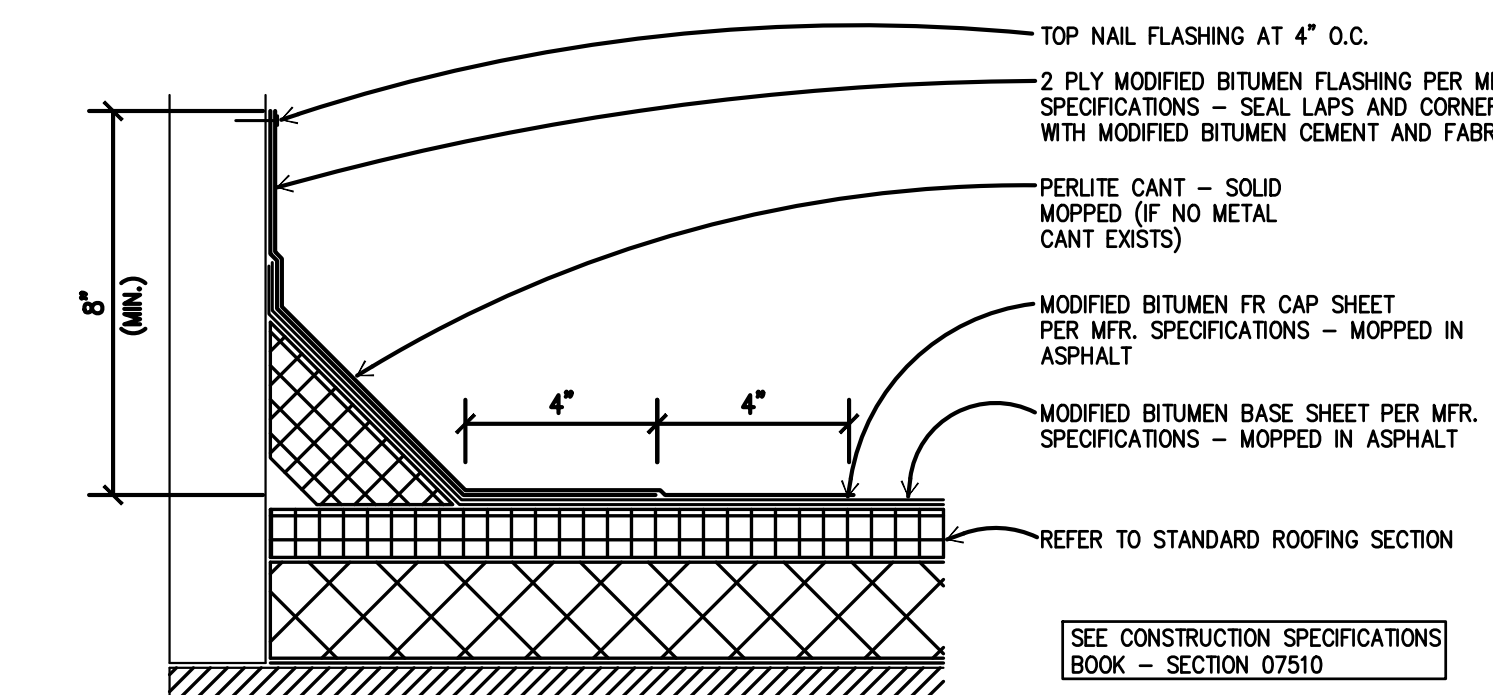
1. TWO-PLY MODIFIED BITUMEN MEMBRANE W/GLASS FIBER REINFORCEMENT. BOTTOM PLY SHALL BE UNSURFACED, TOP PLY SHALL HAVE WHITE MINERAL SURFACE.
2. ROOF ACCESS SCUTTLE, REFERENCE DETAIL, THIS SHEET.
3. PREFABRICATED METAL CANOPY. REFERENCE SHEETS A-7, A-8.
4. VENT THROUGH ROOF - PROVIDE PREFABRICATED DURO-LAST VENT FLASHING FOR ALL VENTS AND PIPE PENETRATIONS. REFERENCE DETAIL #6, THIS SHEET.
5. INSTALL MODIFIED BITUMEN SACRIFICE SHEET AS SPECIFIED AT KITCHEN EXHAUST.
6. ROOF CRICKET WITH SLOPE TO MATCH ROOF. REFER TO DETAIL #3, THIS SHEET.
7. ROOF DRAIN AND OVERFLOW ROOF SCUPPERS - REFER TO DETAILS #4 AND #7 THIS SHEET.
8. ROOFTOP AIR CONDITIONING UNIT - REFER TO MECHANICAL PLANS.
9. EXHAUST FAN - REFER TO MECHANICAL PLANS
10. ILLUMINATED PARAPET LIGHT BAND.
11. METAL COPING.
12. PVC CONDENSATE DRAIN (SIZE AS SHOWN) WITH PIPE SUPPORTS EVERY 5'-0". TERMINATE CONDENSATE DRAIN AT PRIMARY SCUPPER. REFER TO DETAIL #8, THIS SHEET FOR ADDITIONAL INFORMATION.
13. PROVIDE PITCH PAN WITH CONDUIT OVER OFFICE FOR SATELLITE DISH/ANTENNA.
14. EQUIPMENT STAND FOR WALK-IN BOX COOLER/FREEZER CONDENSERS AND ICE MACHINE CONDENSER. REFER TO EQUIPMENT STAND DETAIL, THIS SHEET.

GENERAL NOTES:

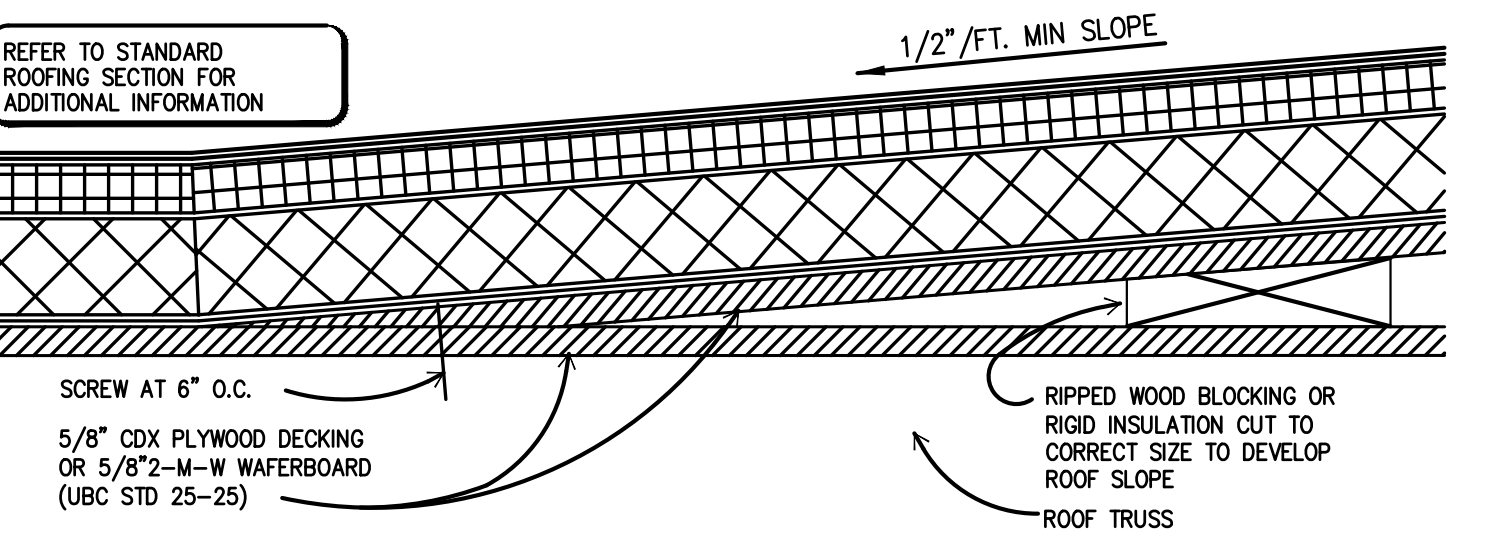
- A. THE ROOF STRUCTURE SHALL NOT BE USED FOR STOCKPILING OF EQUIPMENT OR MATERIALS UNLESS APPROVED BY THE ARCHITECT, STRUCTURAL ENGINEER AND THE JOIST MANUFACTURER.
- B. THE ROOFING SYSTEM SHALL BE AS PER DRAWINGS AND PER MANUFACTURER'S SPECIFICATIONS.
- C. COORDINATE ROOF ELEVATIONS WITH STRUCTURAL DRAWINGS. REFER TO SPECIFICATION SHEET FOR ROOF RELATED ITEMS, INCLUDING GUARANTEES, CURBS, FLASHING, ETC.



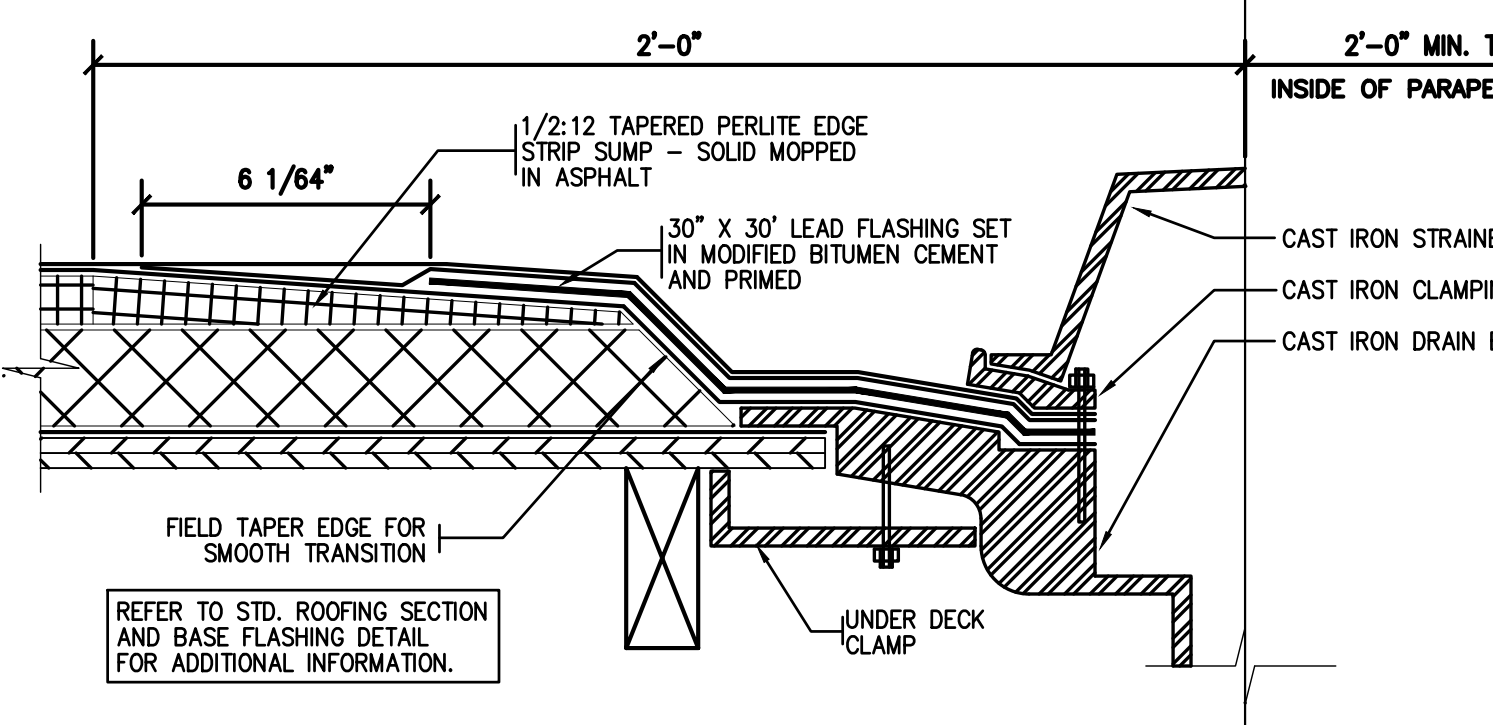
1 STANDARD ROOFING SECTION
SCALE: 3" = 1'-0"



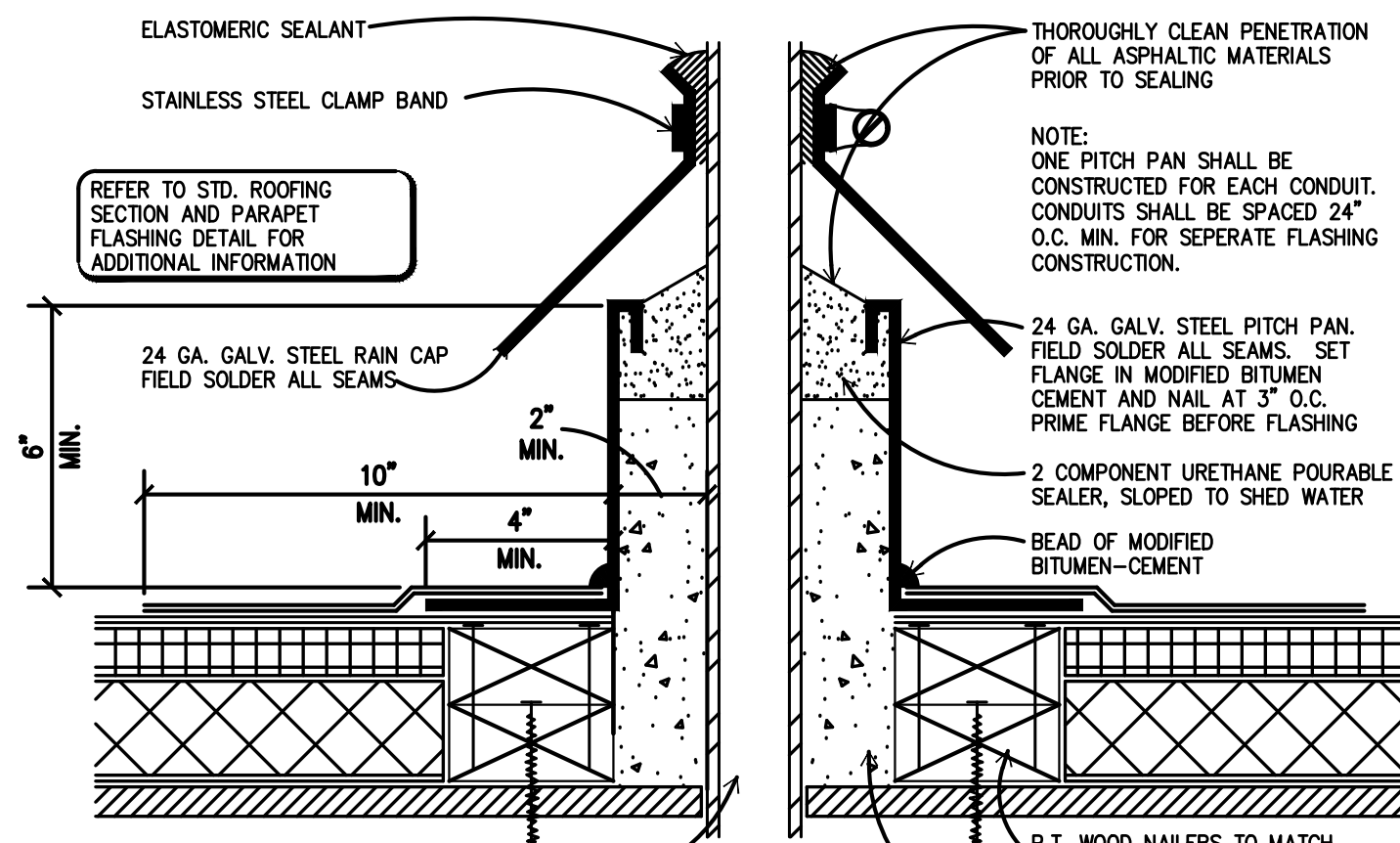
2 STANDARD BASE FLASHING CONFIGURATION
SCALE: 3" = 1'-0"



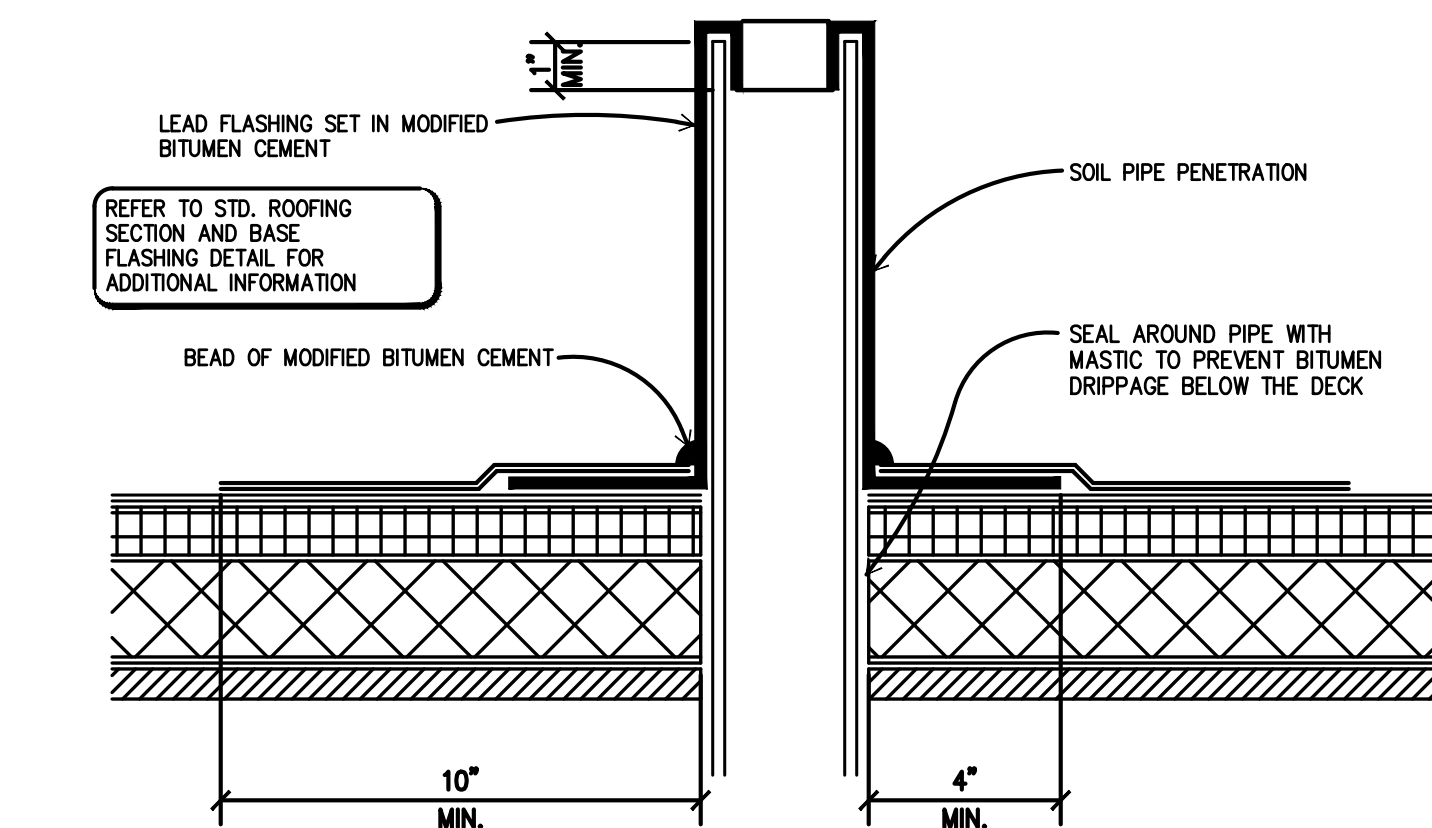
3 TYPICAL CRICKET DETAIL
SCALE: 3" = 1'-0"



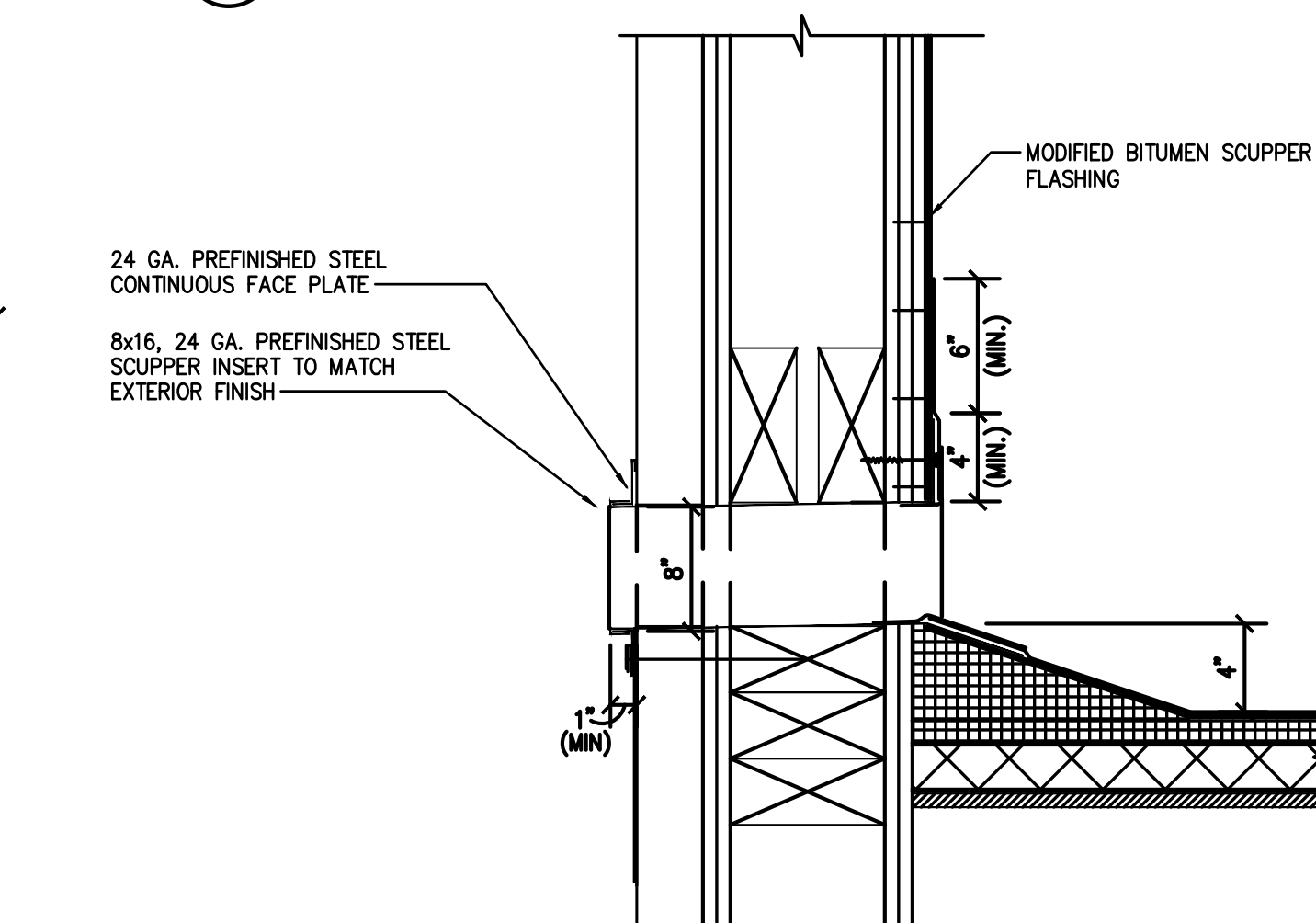
4 ROOF DRAIN DETAIL
SCALE: 3" = 1'-0"



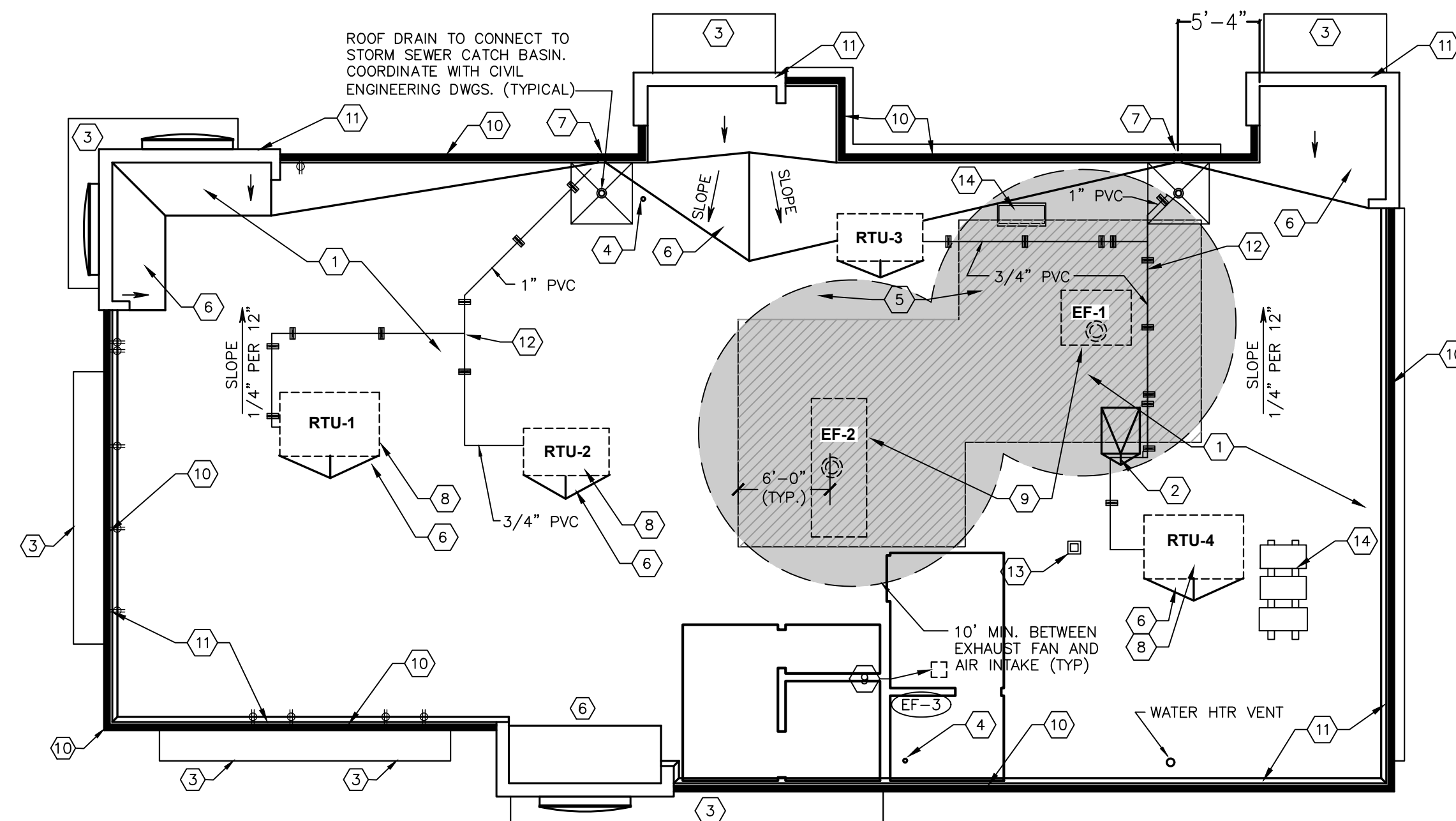
5 PITCH PAN DETAIL
SCALE: 3" = 1'-0"



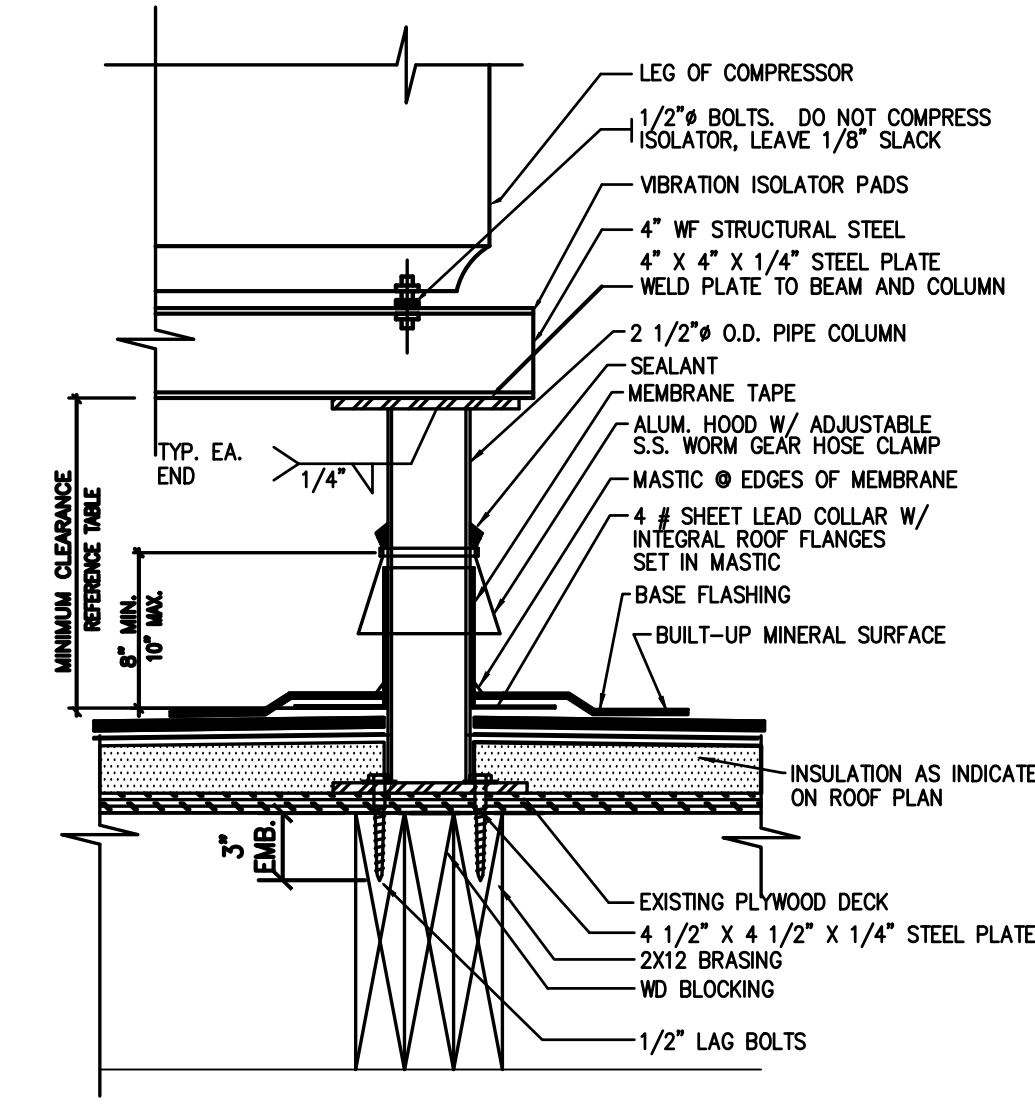
6 SOIL PIPE FLASHING DETAIL
SCALE: 3" = 1'-0"



7 OVERFLOW SCUPPER DETAIL
SCALE: 3" = 1'-0"



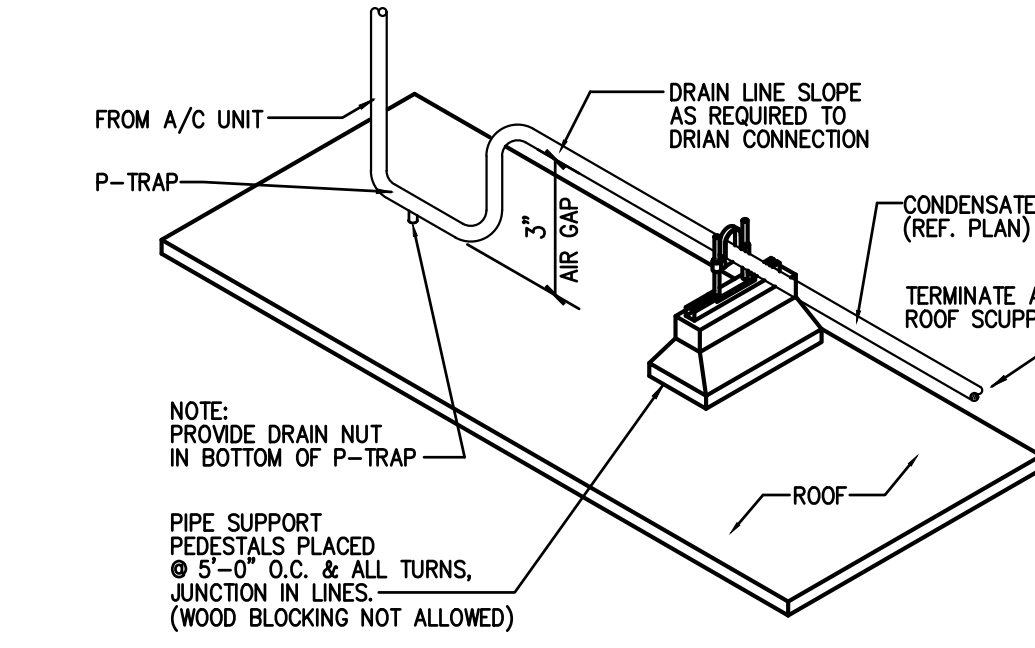
NOTE: ALL ROOFING DETAILS TO BE VERIFIED AND COORDINATED WITH MANUFACTURER'S SPECIFICATIONS AND WARRANTIES.



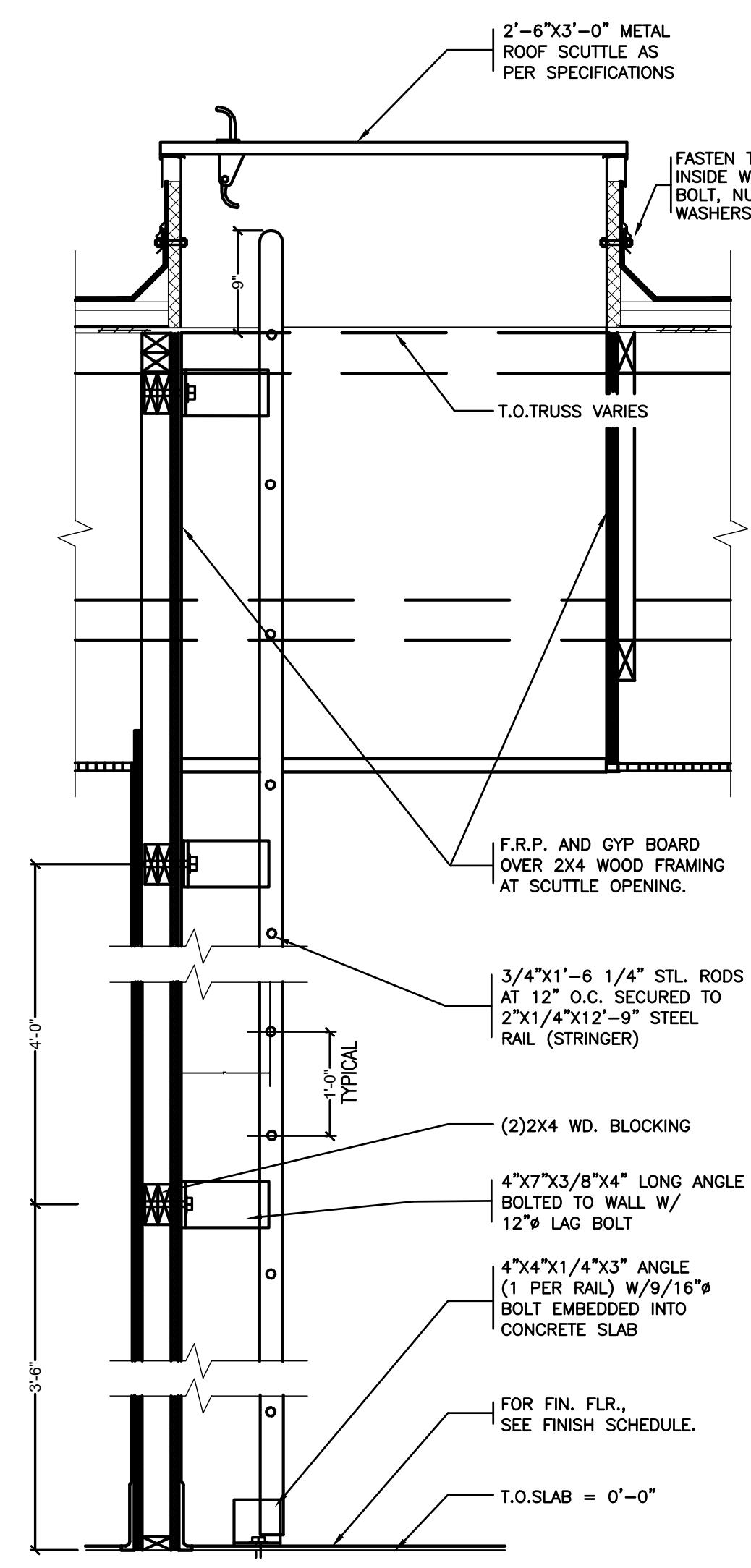
9 EQUIPMENT STAND DETAIL
SCALE: 3" = 1'-0"

VERIFY W/ EQUIPMENT SUPPLIER IF IN CONTRACT.

CLEARANCE BELOW RAISED ROOF MOUNTED MECHANICAL UNITS (INCHES)	
WIDTH OF UNIT	MINIMUM CLEARANCE ABOVE ROOF SURFACE
< 24	14
24 < 36	18
36 < 48	24
48 < 60	30
> 60	48



8 CONDENSATE LINE SUPPORT DETAIL
SCALE: NONE



10 ROOF SCUTTLE DETAIL
SCALE: 3/4" = 1'-0"

Issued:	Date:
A BKC Approval	10/29/2021
B Permit Set	1/21/2022
C Bid Set	1/24/2022
D Construction Set	3/14/2022
E	

Revisions:	Date:
1	
2	
3	
4	
5	
6	
7	
8	
9	

Seal	Seal
PROJECT ARCHITECT/ENGINEER	DATE
PROJECT LEAD	DATE
PROJECT DESIGNER	DATE

Copyright © 2022
APD Engineering & Architecture, LLC
Drawing Alteration
It is a violation of law for any person, unless acting under the direction of a Licensed Architect, Professional Engineer, Landscape Architect, or Land Surveyor to alter any item on this document in any way. Any licensee who alters this document is required by law to affix his or her seal and to add the notation "Altered By" followed by his or her signature and the specific description of the alteration or revision.
DO NOT SCALE PLANS
Copying, Printing, Software and other processes required to produce these prints can stretch or shrink the actual paper or layout. Therefore, scaling of this drawing may be inaccurate. Contact APD E&A with any need for additional dimensions or clarifications.

APD ENGINEERING ARCHITECTURE
615 Fishers Run Victor, NY 14564
585.742.2222 - www.apd.com

Ampler Development LLC
4700 Falls of Neuse Rd
Suite 400
Raleigh, NC 27609
phone: (513) 484-0965

Burger King Inc. Store #
322 Pottstown Ave
Pennsburg, PA 18073
Montgomery County
Project Name & Location:

Roof Plan and Details Drawing Name:	
Date: 11/8/2021	Project No. 21-0327
Type: ROC-2502T	A-5
Drawn By: MGV	Drawing No.
Scale: As Noted	