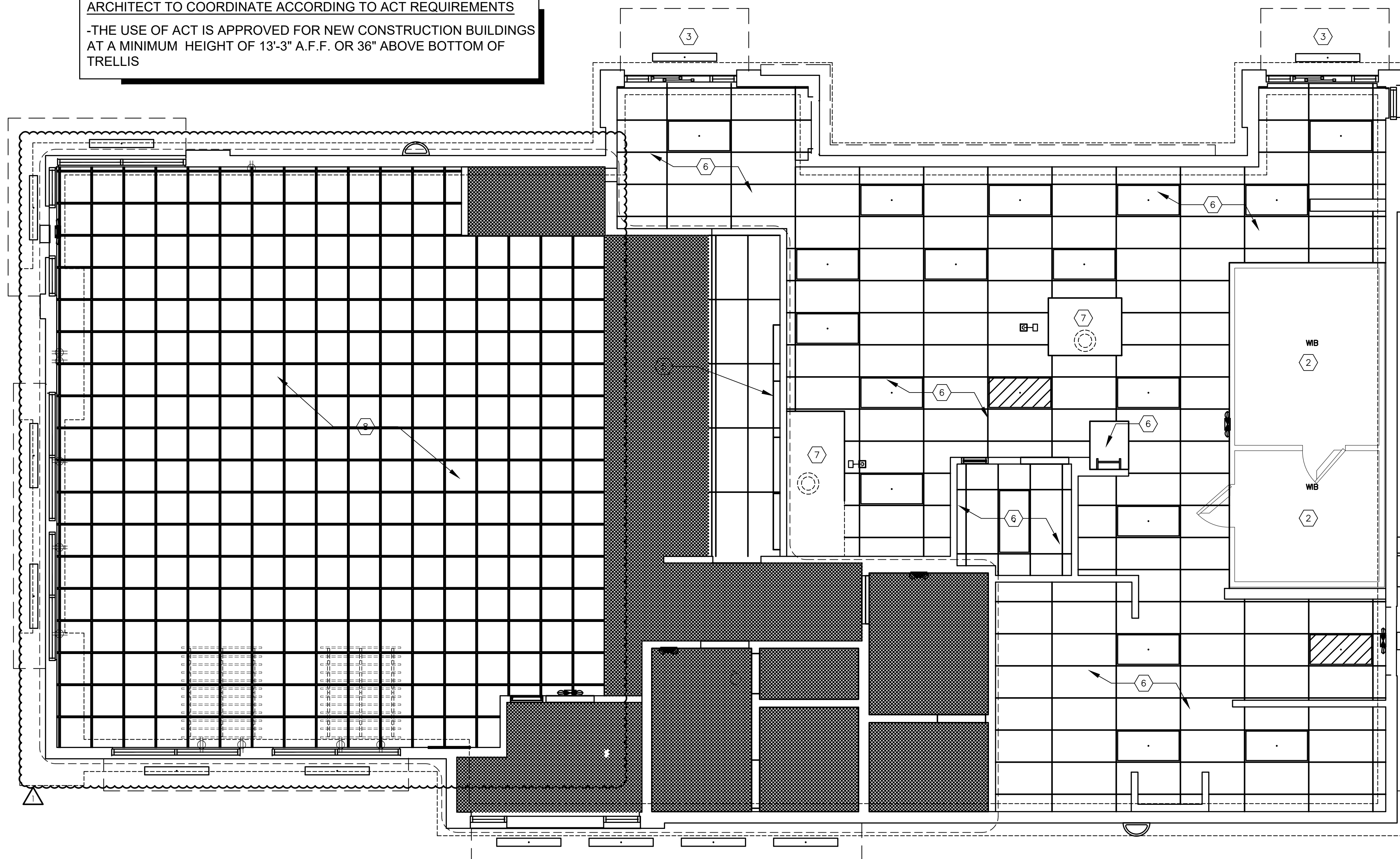


ARCHITECT TO COORDINATE ACCORDING TO ACT REQUIREMENTS
 -THE USE OF ACT IS APPROVED FOR NEW CONSTRUCTION BUILDINGS
 AT A MINIMUM HEIGHT OF 13'-3" A.F.F. OR 36" ABOVE BOTTOM OF
 TRELLIS



REFLECTED CEILING PLAN

SCALE: 1/4" = 1'-0"

NOTE:
 DINING ROOMS ARE DESIGNED TO A 35 - 40 FOOT-CANDLE LEVEL.
 KITCHENS ARE DESIGNED TO 50 FOOT-CANDLE LEVEL.
 RESTROOMS ARE DESIGNED TO 50 FOOT-CANDLE. FOR
 ADDITIONAL INFORMATION ON LIGHTING REQUIREMENTS REFER
 TO BURGER KING LIGHTING STANDARDS POSTED @
 DESIGNWITHBK.COM/COMMON DOCUMENTS.

GENERAL NOTES:

- A. ALL DIMENSIONS SHOWN ON REFLECTED CEILING PLAN ARE FROM FACE OF WALL FINISH UNLESS NOTED OTHERWISE.
- B. THE REFERENCE HEIGHTS INDICATED ON PLAN ARE FROM FINISH FLOOR (F.F.)
- C. GENERAL CONTRACTOR TO COORDINATE DINING ROOM LIGHTING WITH APPROVED INTERIOR DECOR DRAWINGS.
- D. CONTRACTOR SHALL VERIFY FIXTURE QUANTITIES AND ALSO MAKE PROPER ADJUSTMENTS FOR ANY CHANGES IN PLAN DUE TO ADDITIONAL REQUIREMENTS, LOCAL CODES, ETC.
- E. FOR H.V.A.C. PLAN, SECTIONS, DUCT LOCATIONS, SUPPLY AND RETURN GRILLE SIZES AND ADDITIONAL INFORMATION, REFERENCE SHEET M-1.
- F. ALL FIXTURES SHALL BE LOCATED IN THE CENTER OF CEILING TILES UNLESS NOTED OTHERWISE.
- G. REFERENCE SHEET E-1 FOR LIGHTING LAYOUT REQUIREMENTS AND ADDITIONAL INFORMATION.
- H. REFERENCE INTERIOR DECOR SHEETS FOR FINISH SPECIFICATIONS.
- I. CONTRACTOR TO COORDINATE PENDANT LIGHT LOCATIONS WITH DECOR SUPPLIER DRAWINGS.

KEYED NOTES:

- 1 GYPSUM BOARD CEILING/SOFFIT
- 2 EXPOSED TRUSSES ABOVE WALK-IN BOX, REFER TO W.I.B. DRAWINGS FOR INTERIOR LIGHT FIXTURES
- 3 PREFABRICATED METAL CANOPY
- 4 STAINLESS STEEL SERVICE CHASE
- 5 MENU BOARD AND HEADER. REFERENCE DTL 7/A-4.1
- 6 SUSPENDED ACCOUSTICAL TILE CEILING. REFER TO FINISH SCHEDULE.
- 7 MECHANICAL EXHAUST HOOD ABOVE
- 8 REFER TO DECOR RCP FOR FINISHES
- 9 ROOF ACCESS

SYMBOLS LEGEND

SYMBOL	DESCRIPTION
	SUPPLY AIR DIFFUSERS
	RETURN AIR GRILLES
	EXHAUST FAN GRILLES
A	SINGLE PENDANT, COORDINATE LOCATION AND QUANTITY WITH DECOR SUPPLIER.
B	SINGLE PENDANT, COORDINATE LOCATION AND QUANTITY WITH DECOR SUPPLIER.
C6w	6" DIAMETER RECESSED DOWNLIGHT
D6w	6" DIAMETER ADJUSTABLE WALL WASH DOWNLIGHT
E	ADJUSTABLE TRACK LIGHT
F	PROFILE LIGHT
G	2" DIAMETER DOWNLIGHT
G1	2" DIAMETER WALL WASH DOWNLIGHT
I	2x4 RECESSED FLAT LENS (NIGHT LIGHT WHEN SHOWN HATCHED)
K	12x12 RECESSED SOFFIT LIGHT
L	SURFACE MOUNTED EXTERIOR WALL SCONCE (ALSO USED IN OPEN CANOPIES)
M	NET LISTED 4'-0" CANOPY LIGHT (USED UNDER AWNINGS AND CLOSED CANOPIES)
N	WALL MOUNTED SECURITY LIGHT
EM	EMERGENCY LIGHT
EMX	EXIT LIGHT

Issued:	Date
A BKC Approval	10/29/2021
B Permit Set	1/21/2022
C Bid Set	1/24/2022
D Construction Set	3/14/2022
E	

Revisions:	Date
1 Addendum #2	2/21/2022
2	
3	
4	
5	
6	
7	
8	
9	

Seal	Seal	DATE
PROJECT ARCHITECT/ENGINEER		
PROJECT LEAD		DATE
PROJECT DESIGNER		DATE

Copyright © 2022
 APD Engineering & Architecture, LLC
 Drawing Alteration
 It is a violation of law for any person, unless acting under the direction of a Licensed Architect, Professional Engineer, Landscape Architect, or Landscape Designer to alter any item on this document in any way. Any licensee who alters this document is required by law to affix his or her seal and to add the notation "Altered By" followed by his or her signature and the specific description of the alteration or revision.
DO NOT SCALE PLANS
 Copying, Printing, Software and other processes required to produce these prints can stretch or shrink the actual paper or layout. Therefore, scaling of this drawing may be inaccurate. Contact APD E&A with any need for additional dimensions or clarifications.



Burger King Inc.
 Store #
 322 Pottstown Ave
 Pennsburg, PA 18073
 Montgomery County
 Project Name & Location:

Reflected Ceiling
 Plan
 Drawing Name:
 Date: 11/8/2021
 Type: ROC-2502T
 Drawn By: MV
 Scale: As Noted
 Project No.
 21-0327
 A-4
 Drawing No.