

Issued:	Date:
A BKC Approval	10/29/2021
B Permit Set	1/21/2022
C Bid Set	1/24/2022
D Construction Set	3/14/2022
E	

Revisions:	Date:
1	
2	
3	
4	
5	
6	
7	
8	
9	

Seal	Seal
PROJECT ARCHITECT/ENGINEER	DATE
PROJECT LEAD	DATE
PROJECT DESIGNER	DATE

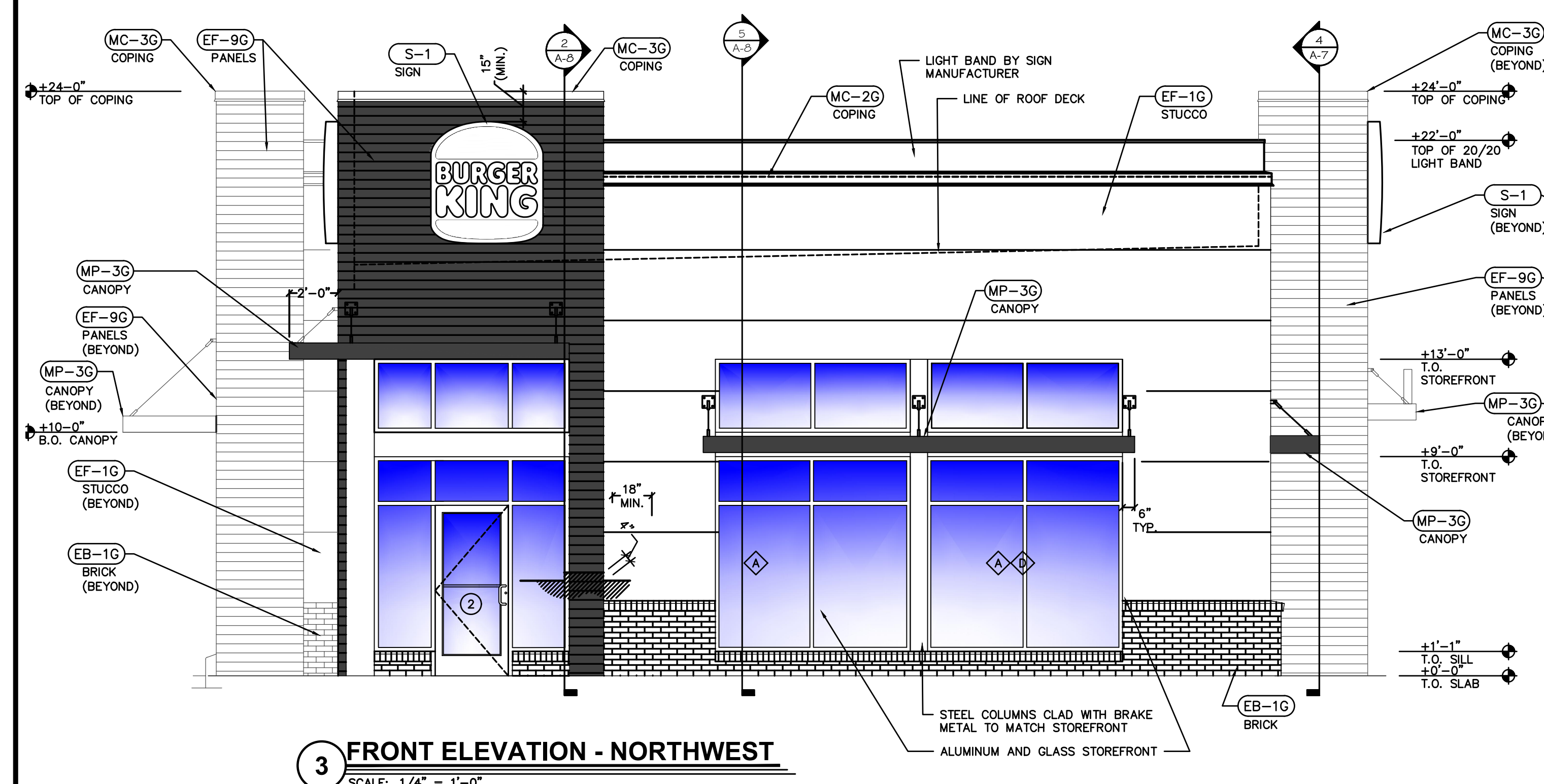
Copyright © 2022
APD Engineering & Architecture, LLC
Drawing Alteration
It is a violation of law for any person, unless acting under the direction of licensed Architect, Professional Engineer, Landscape Architect, or Land Surveyor to alter any item on this document in any way. Any licensee who alters this document is required by law to affix his or her seal and to add the notation "Altered By" followed by his or her signature and the specific description of the alteration or revision.

DO NOT SCALE PLANS
Copying, Printing, Software and other processes required to produce these prints can stretch or shrink the actual paper or layout. Therefore, scaling of this drawing may be inaccurate. Contact APD E&A with any need for additional dimensions or clarifications.

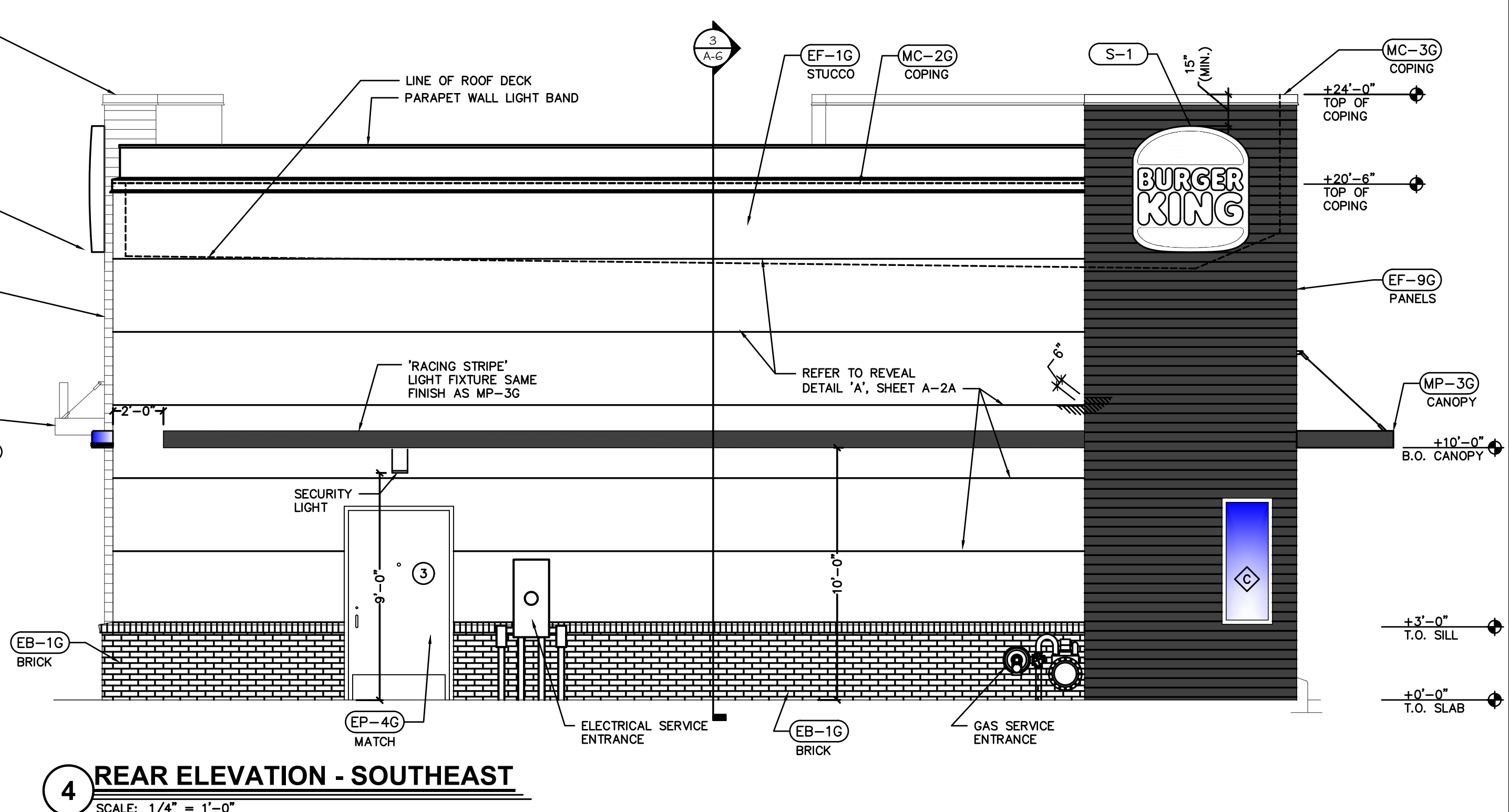


Burger King Inc.
Store #
322 Pottstown Ave
Pennsburg, PA 18073
Montgomery County
Project Name & Location:

Exterior Elevations Drawing Name:	
Date: 11/8/2021	Project No. 21-0327
Type: ROC-2502T	
Drawn By: MGV	A-2B
Scale: As Noted	Drawing No.



3 FRONT ELEVATION - NORTHWEST
SCALE: 1/4" = 1'-0"



4 REAR ELEVATION - SOUTHEAST
SCALE: 1/4" = 1'-0"

EXTERIOR METAL	
MC-20 METAL COPING LOCATION: BELOW LIGHT BAND MANUFACTURER: W.P. HICKMAN SYSTEMS PRODUCT: PERMA SNAP PLUS COLOR: FACTORY FINISH TO MATCH EP-2G PPG TANNERS TAUPE CONTACT: W.P. HICKMAN 628-676-1700 WWW.WPH.COM	MC-30 METAL COPING LOCATION: TOP OF ARCHON MANUFACTURER: W.P. HICKMAN SYSTEMS PRODUCT: PERMA SNAP PLUS COLOR: PAINT TO MATCH EP-8G PPG CEDAR CONTACT: W.P. HICKMAN 628-676-1700 WWW.WPH.COM
MP-30 METAL CANOPY LOCATION: ABOVE DOORS AND WINDOWS MANUFACTURER: SEE APPROVED CANOPY SUPPLIERS PRODUCT: CUSTOM METAL CANOPY COLOR: CLEAR ANODIZED	
EXTERIOR PAINT AND VINYL	
EP-40 EXTERIOR PAINT LOCATION: EXTERIOR BRICK WAINSCOT AND SILL MANUFACTURER: SHERWIN WILLIAMS PRIMER: LONON CONCRETE AND MASONRY A24W300 PAINT: SUPERPAINT EXT SATIN A89 SERIES FINISH: SATIN COLOR: 'HOMESTEAD BROWN' SW7515 CONTACT: GLENN REMLER 954-547-1217, GLENN.J.REMLER@SHERWIN.COM	EP-20 EXTERIOR PAINT LOCATION: EXTERIOR GENERAL MANUFACTURER: PPG COLOR: DESERT DUNE CONTACT: KEVIN LASTACY @ PPG 616-335-3259 KLASTACY@PPG.COM
EXTERIOR FINISH	
EF-10 MATERIAL: STUCCO LOCATION: AS INDICATED MANUFACTURER: STO OR APPROVED EQUAL PRODUCT: STO POWERWALL STUCCO FINISH TEXTURE: FINESAND COLOR: MATCH EP-2G PPG 'DESERT DUNE' CONTACT: TIM SALERNO AT 510 407-466-5371	EF-90 MATERIAL: FIBER CEMENT PANEL (FCP) LOCATION: EXTERIOR SIGN ARCHONS MANUFACTURER: NICHHA FIBER CEMENT PRODUCT: VINTAGE WOOD EF92 COLOR: CEDAR DIMENSIONS: 18" X 10" CONTACT: 770-895-9466 BK@NICHHA.COM
EB-10 MATERIAL: EXTERIOR BRICK LOCATION: GENERAL AND SLOPED SILL MANUFACTURER: EVOLUTION BRICK PRODUCT: FACE BRICK COLOR: SIERRA TUMBLED CONTACT: GABE POWERS 502-558-4612	

NOTE:
1. ALL FINISHES AS PER GARDEN GRILL FINISH SCHEDULE. REFER TO EXTERIOR FINISH SCHEDULE AT DESIGNWITHBK.COM.
2. EXTERIOR ELEVATION DESIGN, INCLUDING PARAPET HEIGHTS, FINISHES, AND COLORS MAY BE MODIFIED BASED ON FINAL MUNICIPAL APPROVALS.

P:\OTED: 11/1/2022 3:50 P:\Rev: 2021 1203\327 - ampler - bk xxx - pennsburg.pot\Building\Arch\Library\Arch