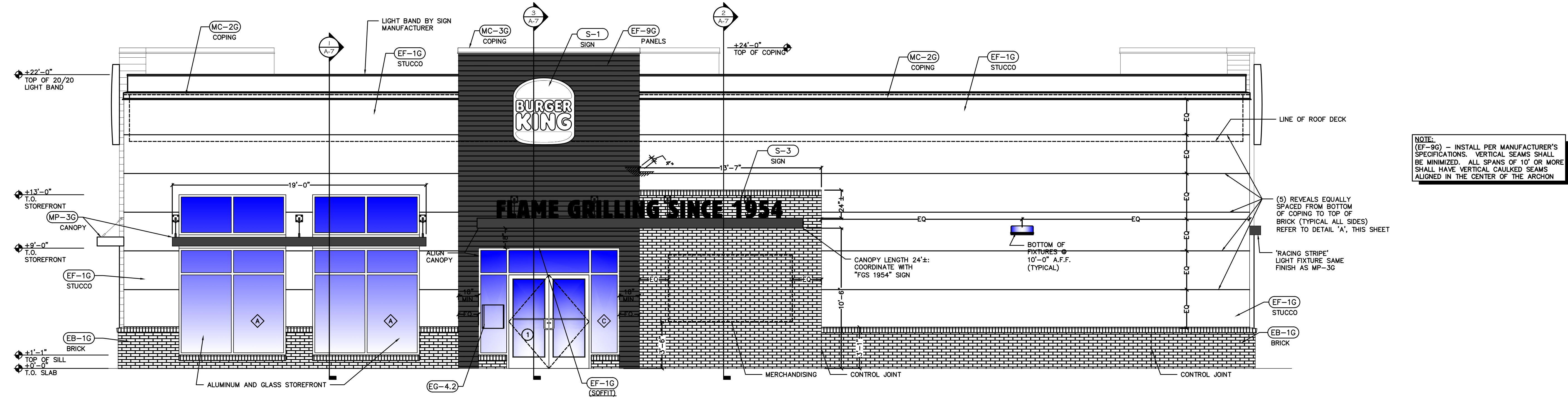


Issued:	Date:
A BKC Approval	10/29/2021
B Permit Set	1/21/2022
C Bid Set	1/24/2022
D Construction Set	3/14/2022
E	

Revisions:	Date:
1	
2	
3	
4	
5	
6	
7	
8	
9	



NOTE:
(EF-9G) - INSTALL PER MANUFACTURER'S SPECIFICATIONS. VERTICAL SEAMS SHALL BE MINIMIZED. ALL SPANS OF 10' OR MORE SHALL HAVE VERTICAL CAULKED SEAMS ALIGNED IN THE CENTER OF THE ARCHON

Seal PROJECT ARCHITECT/ENGINEER DATE

Seal PROJECT LEAD DATE

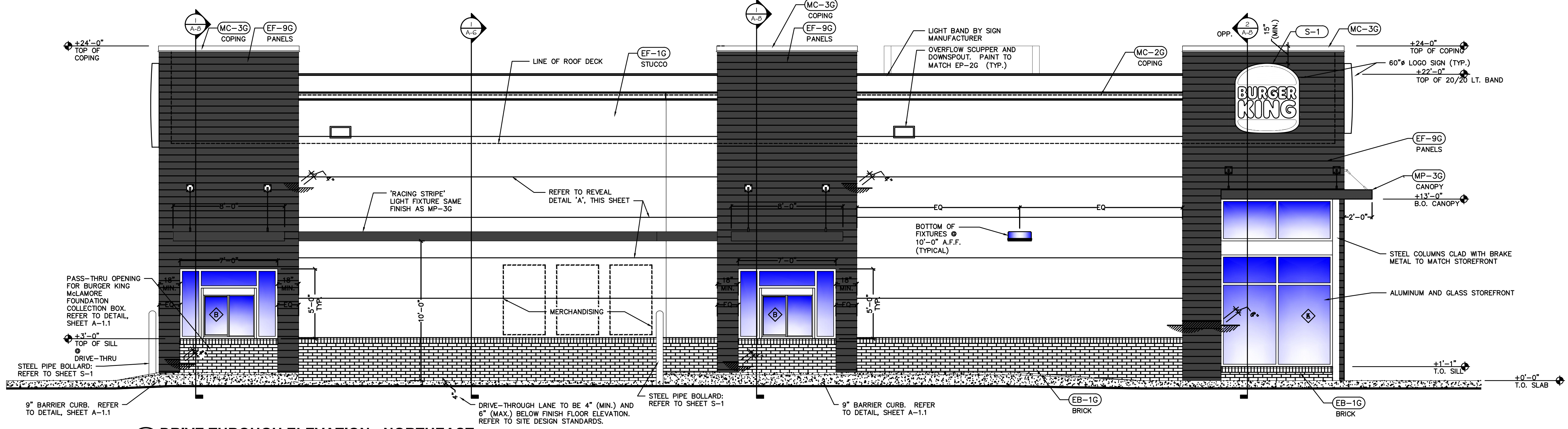
Seal PROJECT DESIGNER DATE

Copyright © 2022 APD Engineering & Architecture, LLC
Drawing Alteration
It is a violation of law for any person, unless acting under the direction of licensed Architect, Professional Engineer, Landscape Architect, or Land Surveyor to alter any item on this document in any way. Any licensee who alters this document is required by law to affix his or her seal and to add the notation "Altered by" followed by his or her signature and the specific description of the alteration or revision.

DO NOT SCALE PLANS
Copying, Printing, Software and other processes required to produce these prints can stretch or shrink the actual paper or layout. Therefore, scaling of this drawing may be inaccurate. Contact APD E&A with any need for additional dimensions or clarifications.

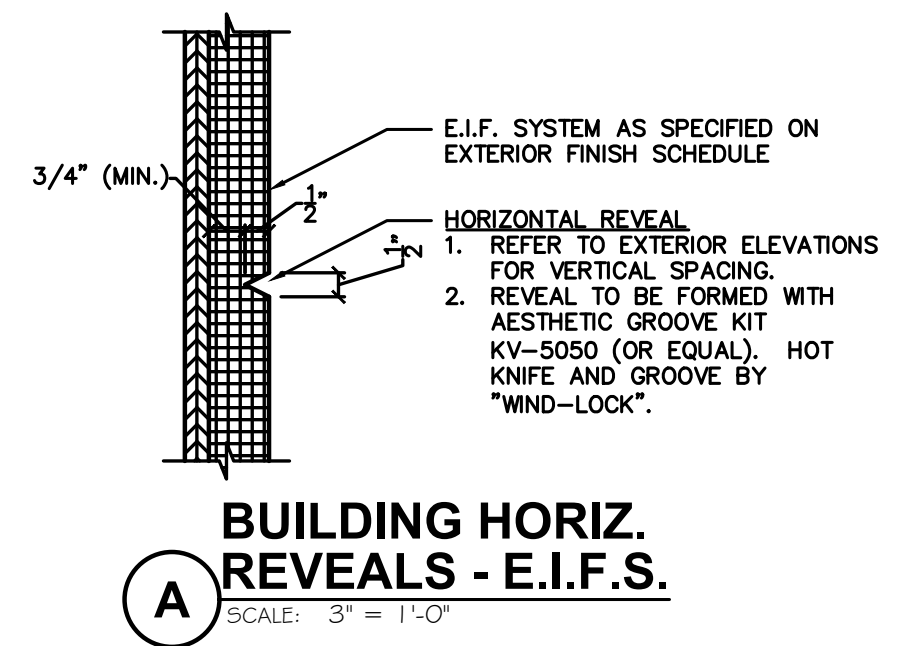
APD ENGINEERING ARCHITECTURE
615 Fishers Run Victor, NY 14564
585.742.2222 - www.apd.com

Ampler Development LLC
4700 Falls of Neuse Rd Suite 400
Raleigh, NC 27609
phone: (513) 484-0965



EXTERIOR METAL	
(MC-2G) METAL COPING LOCATION: BELOW LIGHT BAND MANUFACTURER: W.P. HICKMAN SYSTEMS PRODUCT: PERMA SNAP PLUS COLOR: FACTORY FINISH TO MATCH EP-2G PPG TANNERS TAUPÉ CONTACT: W.P. HICKMAN 628-676-1700 WWW.WPH.COM	(MC-3G) METAL COPING LOCATION: TOP OF ARCHON MANUFACTURER: W.P. HICKMAN SYSTEMS PRODUCT: PERMA SNAP PLUS COLOR: PAINT TO MATCH EP-8G PPG CEDAR CONTACT: W.P. HICKMAN 628-676-1700 WWW.WPH.COM
(MP-3G) METAL CANOPY LOCATION: ABOVE DOORS AND WINDOWS MANUFACTURER: SEE APPROVED CANOPY SUPPLIERS PRODUCT: CUSTOM METAL CANOPY COLOR: CLEAR ANODIZED	
EXTERIOR PAINT AND VINYL	
(EP-4D) EXTERIOR PAINT LOCATION: EXTERIOR BRICK WAINSCOT AND SILL MANUFACTURER: SHERWIN WILLIAMS PRIMER: LONON CONCRETE AND MASONRY A24W300 PAINT: SUPERPAINT EXT SATIN A89 SERIES FINISH: SATIN COLOR: "HOMESTEAD BROWN SW7515" CONTACT: GLENN REMLER 954-547-1217, GLENN.J.REMLER@SHERWIN.COM	(EP-2G) EXTERIOR PAINT GENERAL LOCATION: EXTERIOR GENERAL MANUFACTURER: PPG COLOR: DESERT DUNE CONTACT: KEVIN LASTACY @ PPG 616-335-3259 KLASTACY@PPG.COM
EXTERIOR FINISH	
(EF-1G) MATERIAL: STUCCO LOCATION: AS INDICATED MANUFACTURER: STO OR APPROVED EQUAL PRODUCT: STO POWERWALL STUCCO FINISH TEXTURE: FINESAND COLOR: MATCH EP-2G PPG "DESERT DUNE" CONTACT: TIM SALERNO AT SETO 407-466-5371	(EF-9G) MATERIAL: FIBER CEMENT PANEL (FCP) LOCATION: EXTERIOR SIGN ARCHONS MANUFACTURER: NICHHA FIBER CEMENT PRODUCT: VINTAGE WOOD EF762 COLOR: CEDAR DIMENSIONS: 18" X 12" CONTACT: 770-805-9466 BK@NICHHA.COM
(EB-1G) MATERIAL: EXTERIOR BRICK LOCATION: GENERAL AND SLOPED SILL MANUFACTURER: EVOLUTION BRICK PRODUCT: FACE BRICK COLOR: SIERRA TUMBLED CONTACT: GABE POWERS 502-558-4612	

NOTE:
1. ALL FINISHES AS PER GARDEN GRILL FINISH SCHEDULE. REFER TO EXTERIOR FINISH SCHEDULE AT DESIGNWITHBK.COM.
2. EXTERIOR ELEVATION DESIGN, INCLUDING PARAPET HEIGHTS, FINISHES, AND COLORS MAY BE MODIFIED BASED ON FINAL MUNICIPAL APPROVALS.



ADA SYMBOL OF ACCESSIBILITY (ISA)
DECAL TO BE LOCATED ON STOREFRONT GLASS ADJACENT TO ALL ACCESSIBLE DOORS.
WINDOW DECAL
SCALE: NONE

Burger King Inc.
Store #
322 Pottstown Ave
Pennsburg, PA 18073
Montgomery County
Project Name & Location:

Exterior Elevations Drawing Name:	
Date: 11/8/2021	Project No. 21-0327
Type: ROC-2502T	
Drawn By: MGV	A-2A
Scale: As Noted	Drawing No.

P:\01222\310\Revit\2021\2021_1026\337 - ampler - bk.sxd - pennsburg.pot\building\arch\drawing\arch