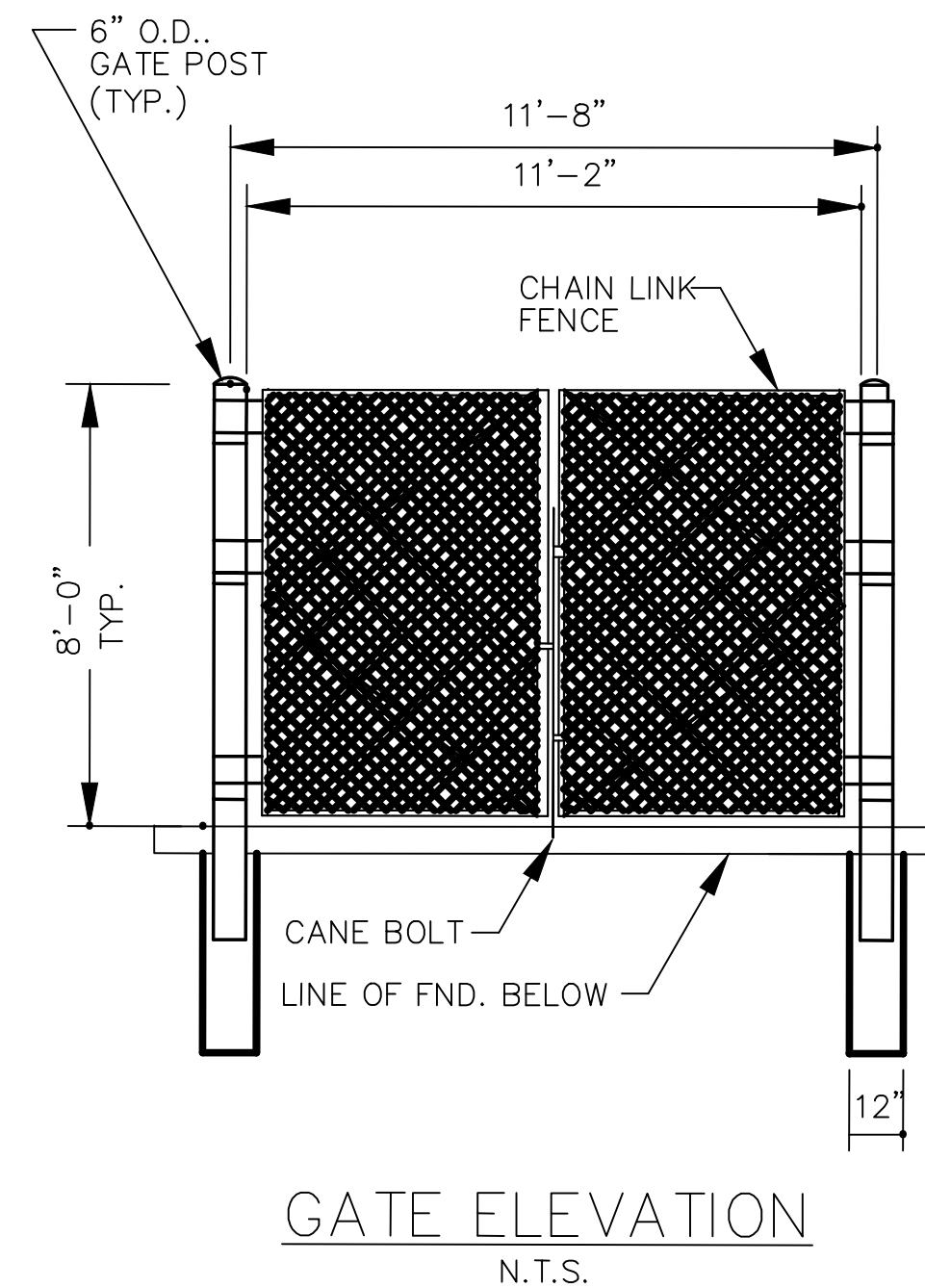
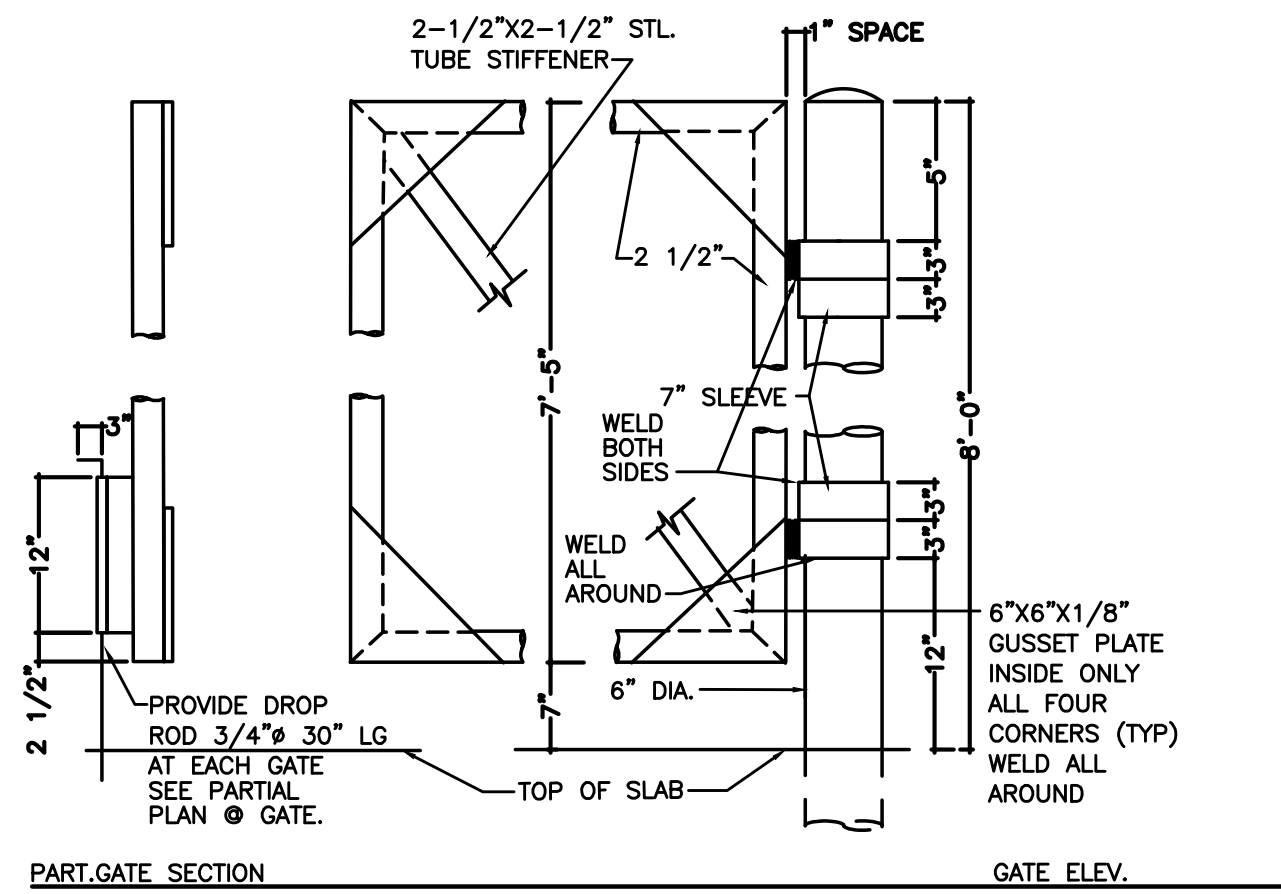
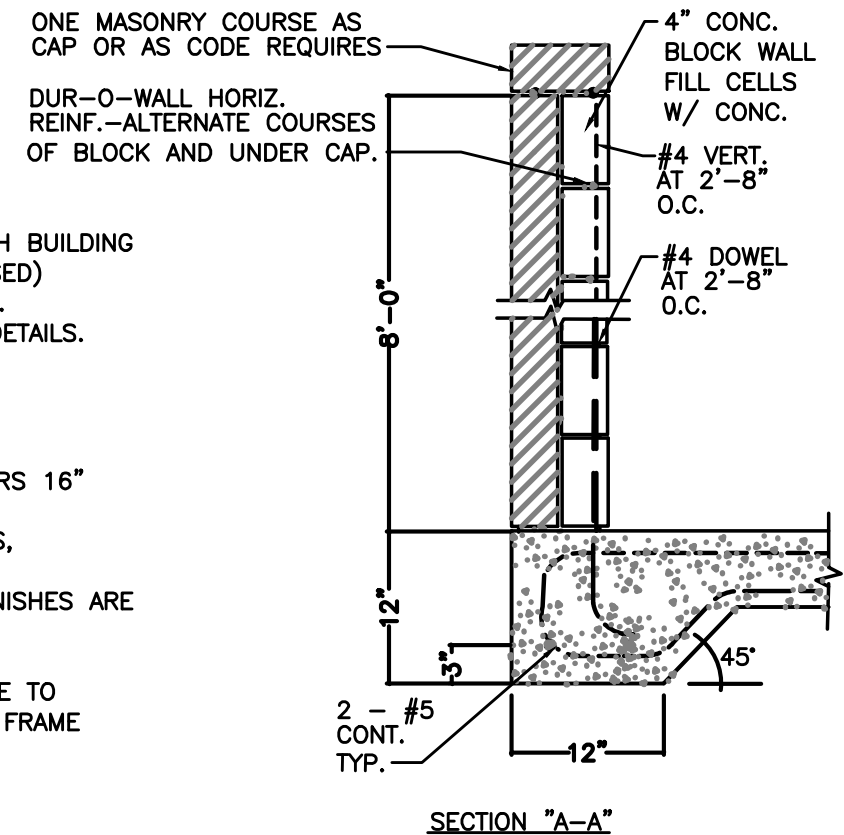


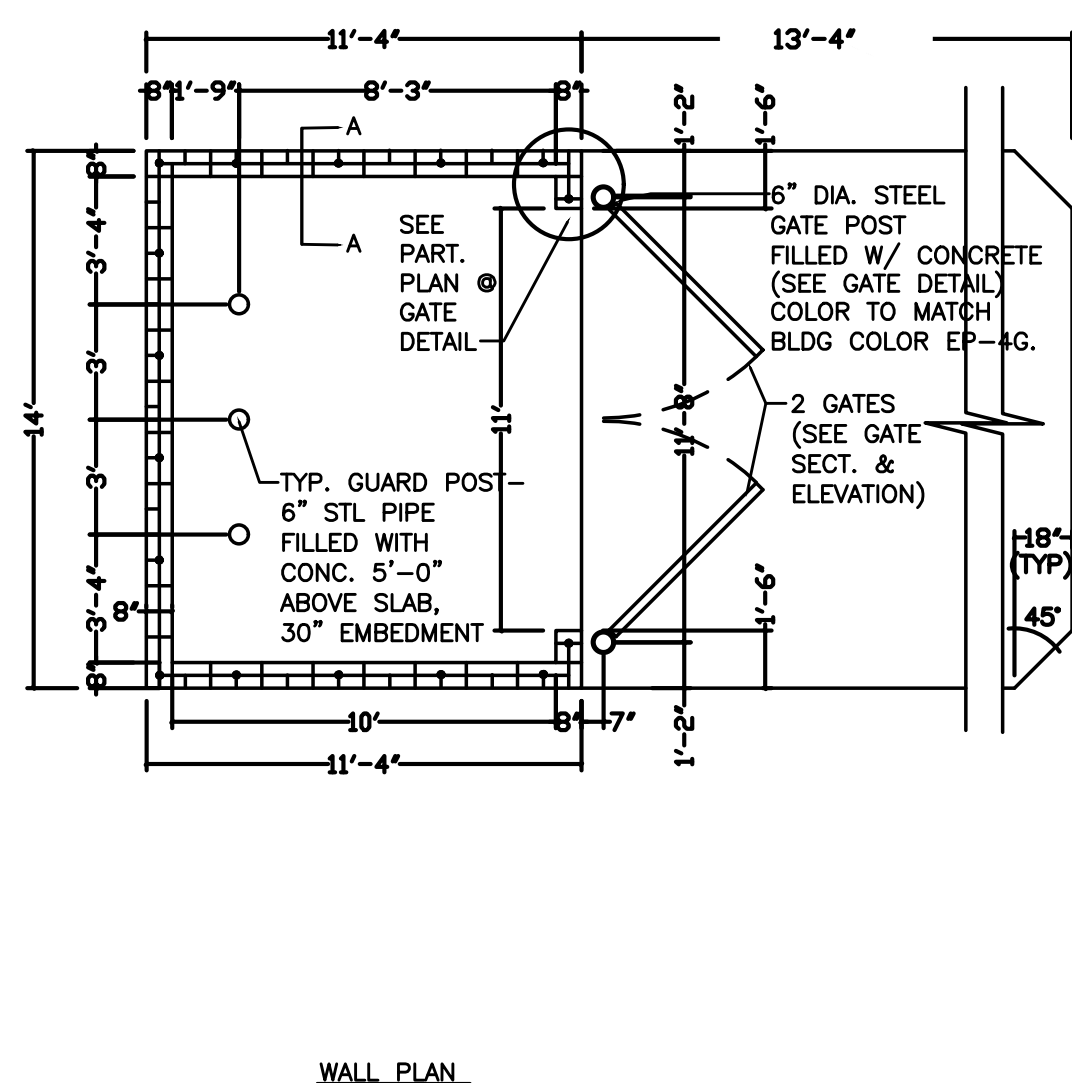
NOTES:

- MASONRY VENEER TO MATCH BUILDING EB-1G (OR EB-1AG IF USED) ON 4\"/>
- 6\"/>
- TYP. WALL FTG. 12\"/>
- 6\"/>
- FOR SLAB FINISHED GRADES, SEE GRADING PLAN.
- ALL STEEL & ALUMINUM FINISHES ARE TO BE PAINTED TO MATCH BUILDING COLOR EP-4G.
- ALL PANELS FOR GATES ARE TO BE THRU-BOLTED TO TUBE FRAME WITH 3/8\"/>

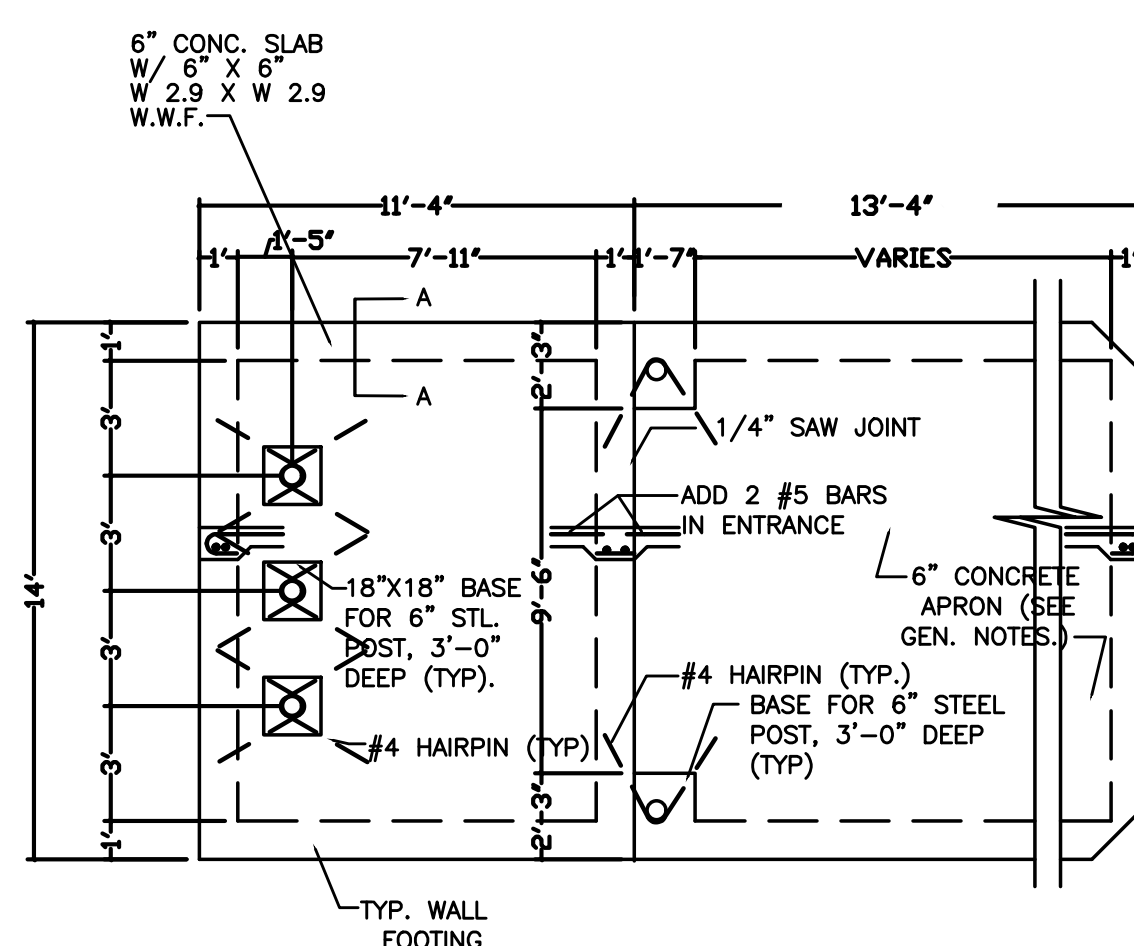


BURGER KING CORPORATION		1	OF	4
SCALE	N.T.S.			
DATE	6/17/08			
REVISED	7/5/16			

BURGER KING CORPORATION		2	OF	4
SCALE	N.T.S.			
DATE	6/17/08			
REVISED	7/5/16			



- DEPTH OF T/E APRON VARIES DEPENDING ON SITE CONDITIONS.
- A 3' WIDE PERSONNEL ACCESS MAY BE ADDED ON THE SIDE OR REAR WALLS IF DESIRED.

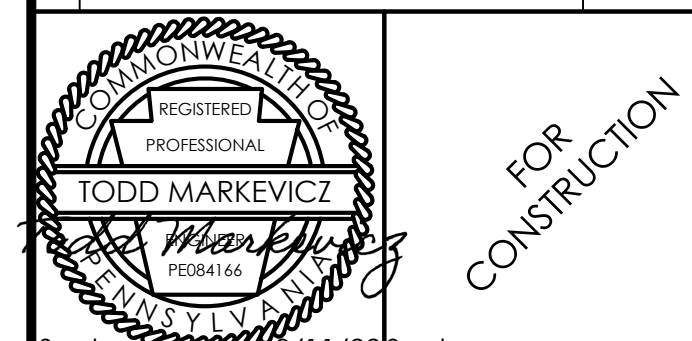


NOTE:
THE CONCRETE TRASH ENCLOSURE APRON SHALL BE 6\"/>

BURGER KING CORPORATION		3	OF	4
SCALE	N.T.S.			
DATE	6/17/08			
REVISED	7/5/16			

BURGER KING CORPORATION		4	OF	4
SCALE	N.T.S.			
DATE	6/17/08			
REVISED	7/5/16			

Issued:	Date:
A	
B	
C	
D	
E	
F	
G	
H	
Revisions:	Date:
1	Revised per Addendum #1 02/08/22
2	
3	
4	
5	
6	
7	
8	



Seal
 CIVIL ENGINEER OF RECORD
 Name: Todd G. Markevich
 Penn. License No.: PE084166
 Exp. Date: September 30, 2023
 Firm Approval No.: 002215

Copyright © 2022
 APD Engineering & Architecture, LLC
 Drawing Alteration
 It is a violation of law for any person, unless acting under the direction of licensed Architect, Professional Engineer, Landscape Architect, or Land Surveyor to alter any item on this document in any way. Any licensee who alters this document is required by law to affix his or her seal and to add the notation "Altered By" followed by his or her signature and the specific description of the alteration or revision.

DO NOT SCALE PLANS
 Copying, Printing, Software and other processes required to produce these prints can stretch or shrink the actual paper or layout. Therefore, scaling of this drawing may be inaccurate. Contact Engineer of Record with any need for additional dimensions or clarifications.



Burger King Store #:
 322 Poltsdown Ave.
 Pennsburg, PA 18073
 Montgomery County (Pennsburg Borough)
 Project Name & Location:

Details Sheet
 Drawing Name:
 Date: 01/21/22
 Type:
 Drawn By: SAS
 Scale: N.T.S.
 Project No.: 21-0327
 C9
 Drawing No.: