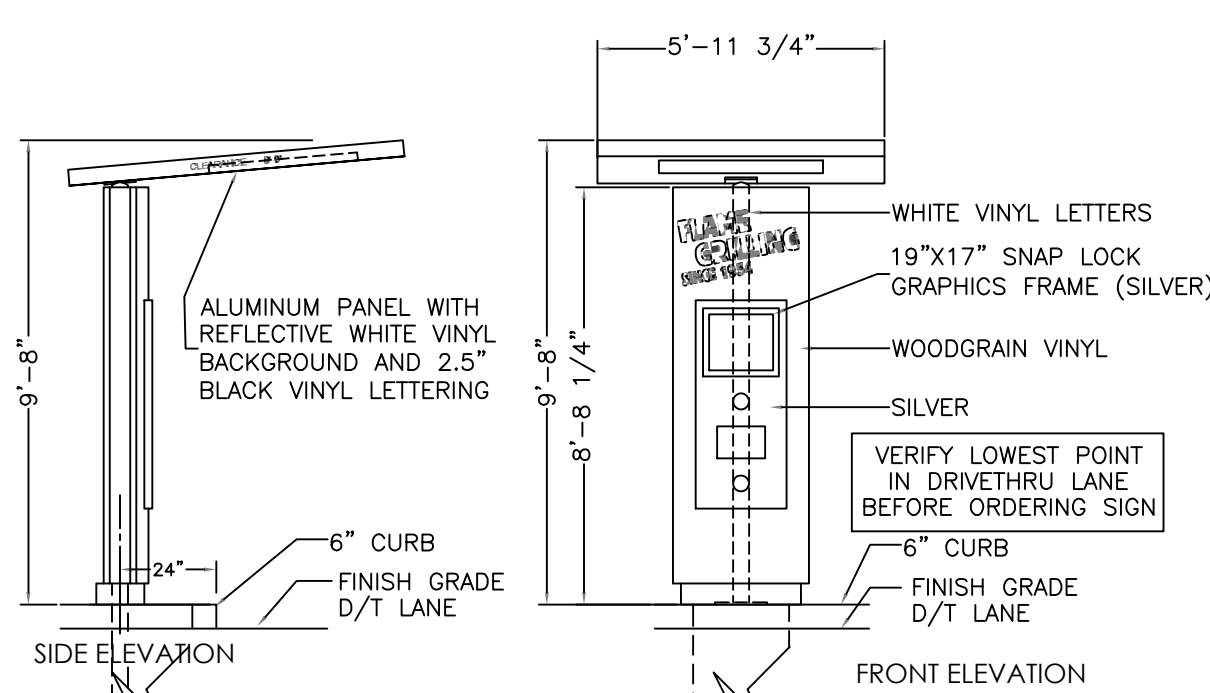
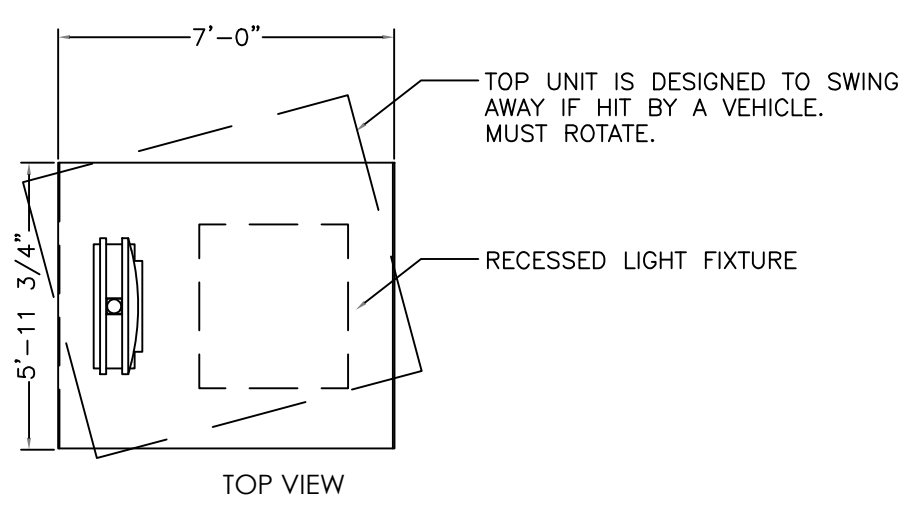
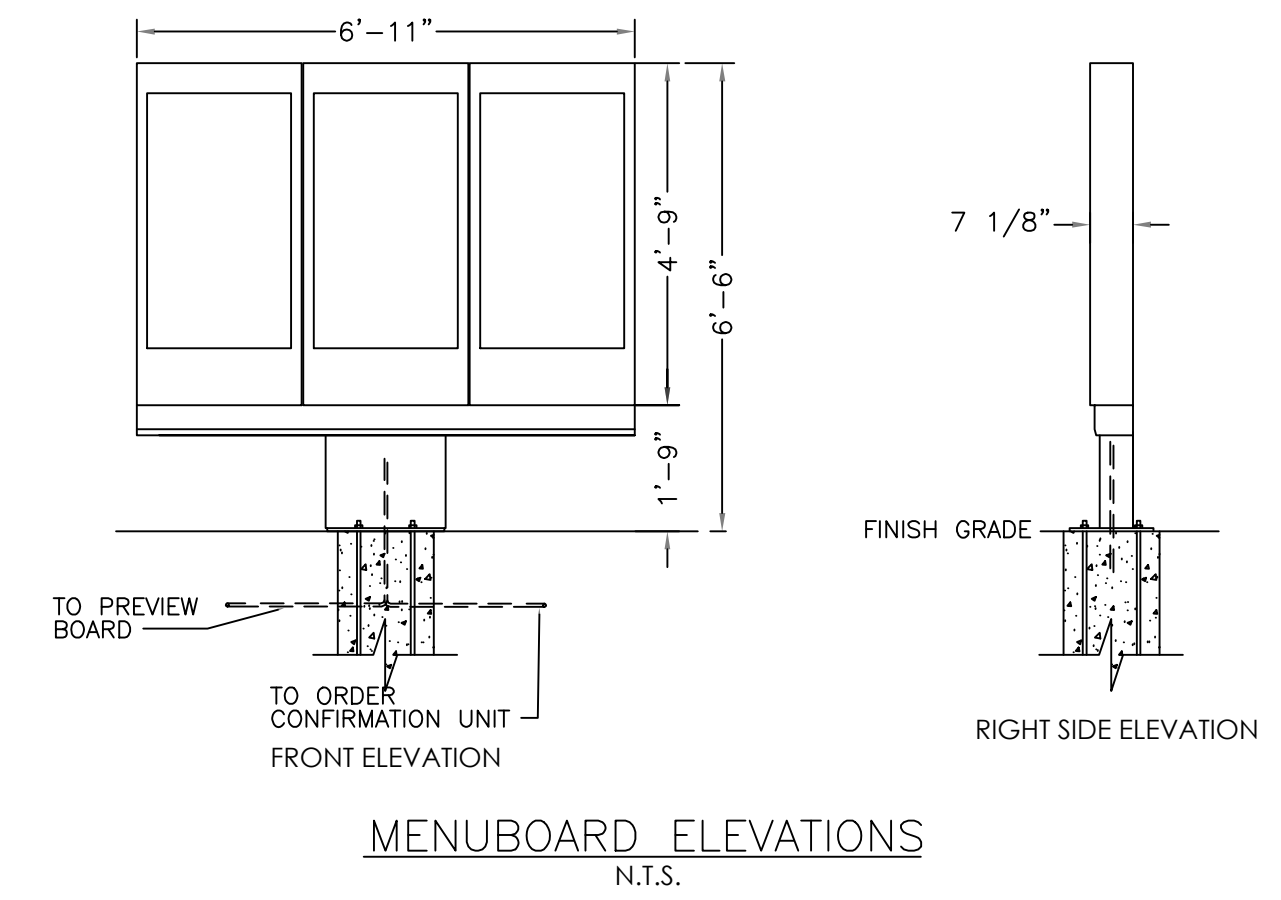


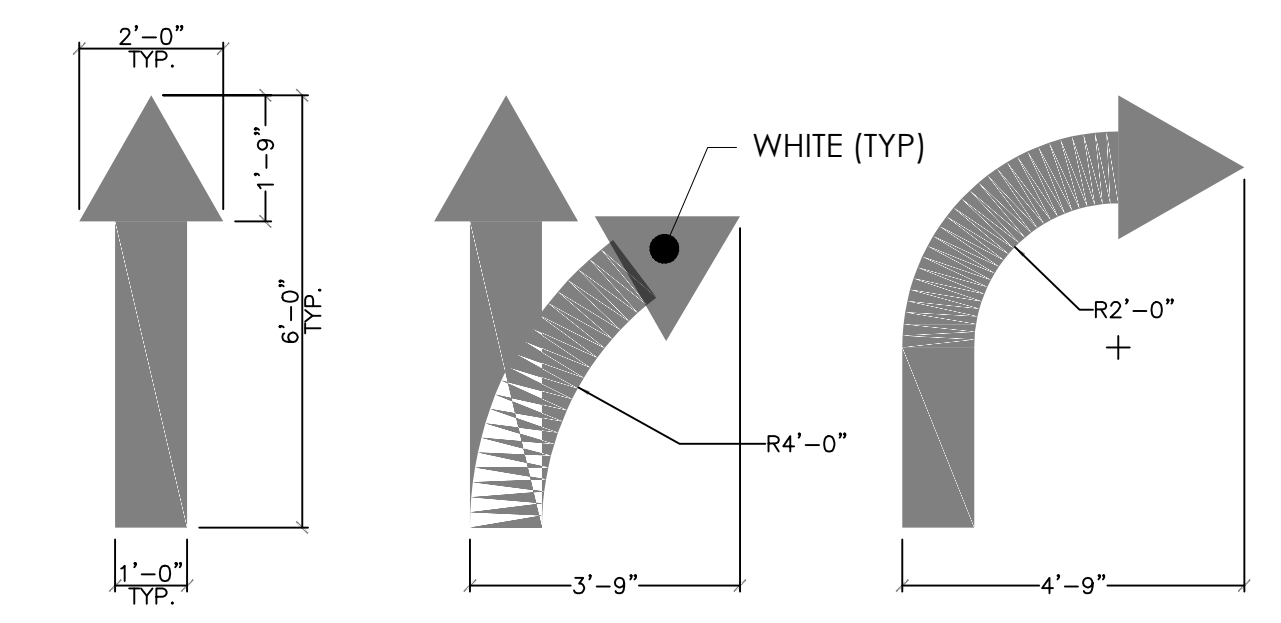
DRIVE-THRU CLEARANCE SIGN 2020 STANDARD IMAGE
N.T.S. NOVEMBER 1, 2017



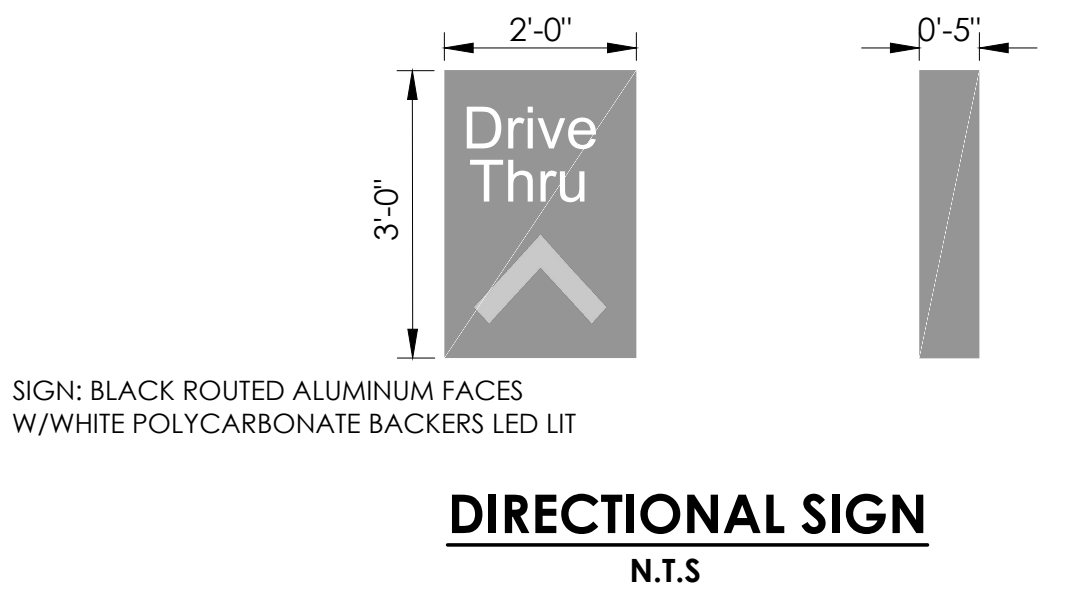
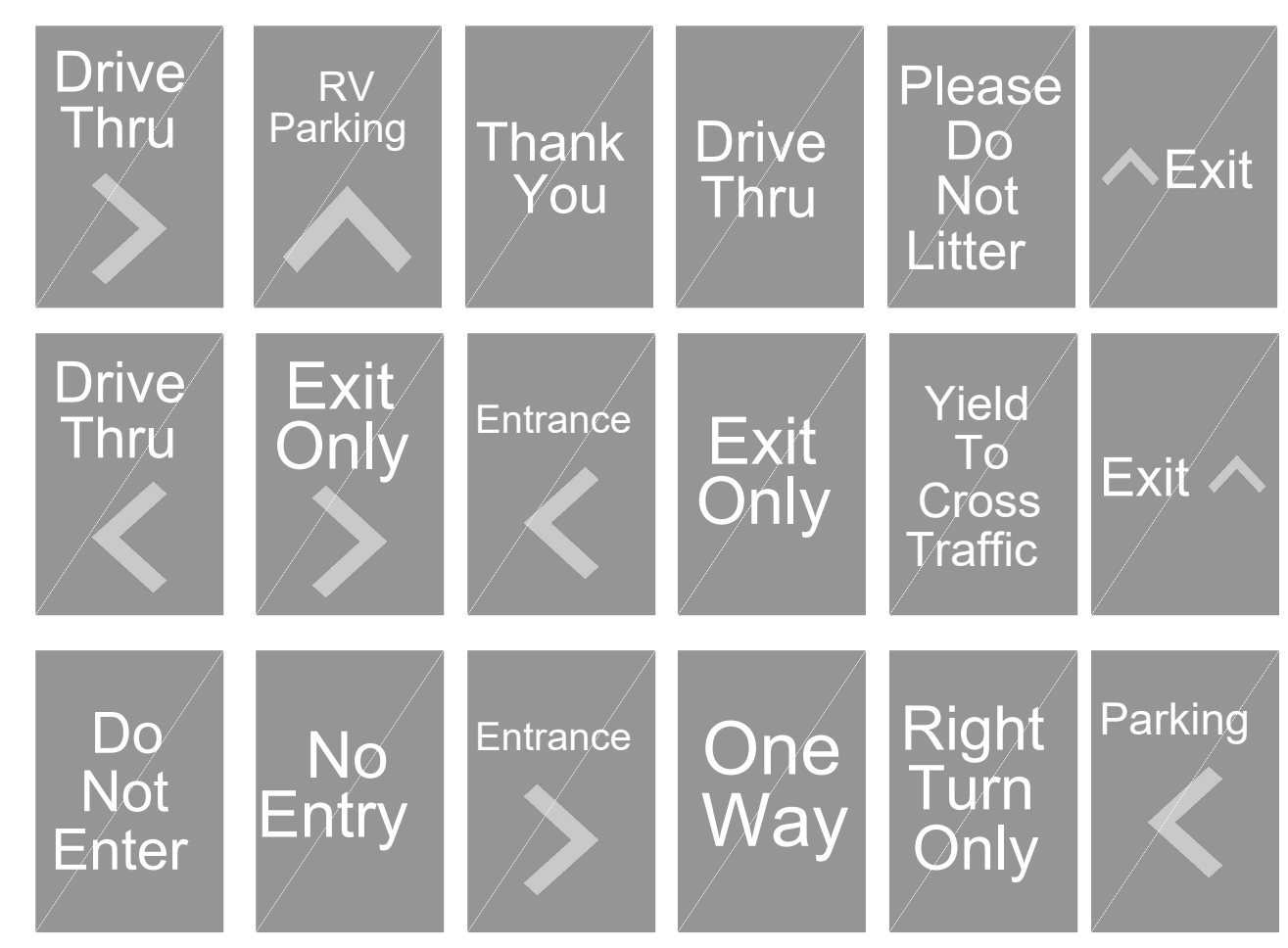
ORDER CONFIRMATION UNIT
N.T.S.



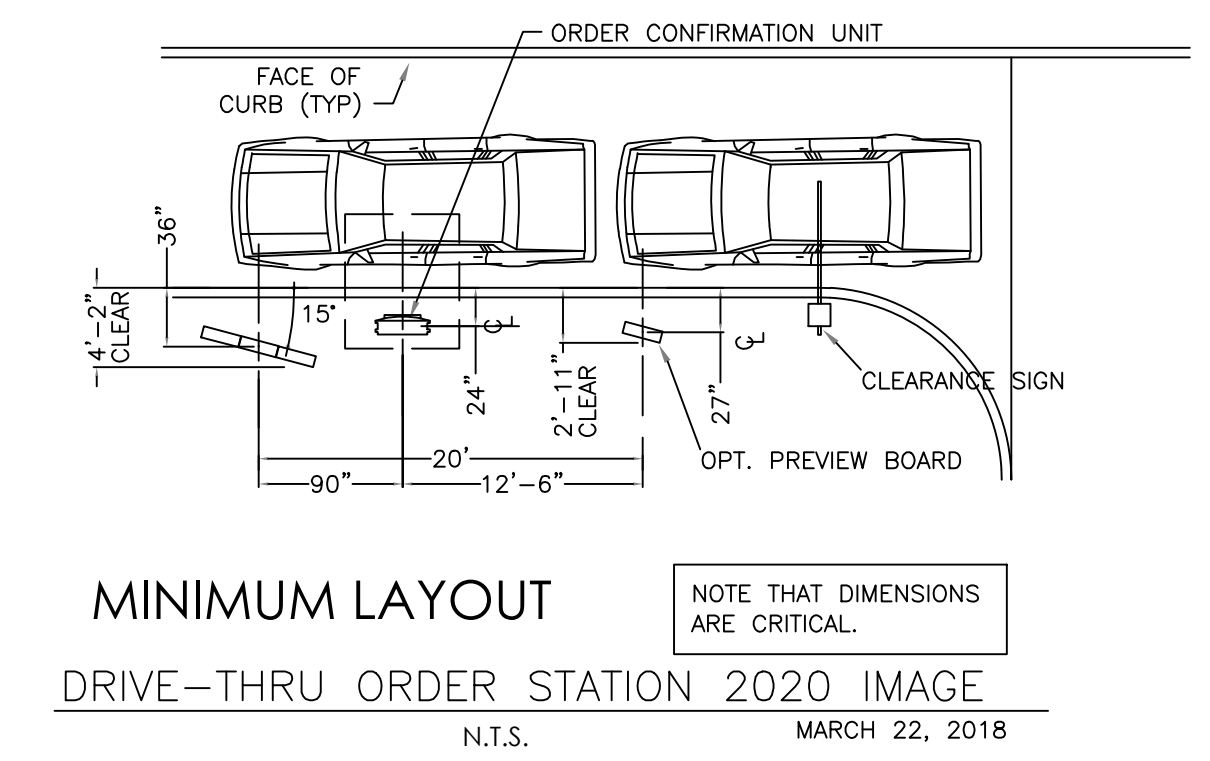
NOTE:
1. THE LG 49XE4F OUTDOOR MONITOR HAS AN AMBIENT LIGHT SENSOR IN THE UPPER RIGHT HAND CORNER WHEN THE DISPLAY IS IN PORTRAIT MODE. THE LIGHT SENSOR CAN BE TURNED "ON" SO THE BRIGHTNESS OF THE MONITOR AUTOMATICALLY ADJUSTS ACCORDINGLY. THE 49XE4F IS RATED AT 4000 NIT BRIGHTNESS WHICH IS MAX BRIGHTNESS. BUT THIS CAN BE SET ACCORDINGLY TO NOT EXCEED CERTAIN BRIGHTNESS.
2. THE CONTENT ON THE MENU BOARD WILL NOT CHANGE MORE THAN ONCE EVERY 24 HOURS. THE MENU BOARD WILL NOT DISPLAY ANY OTHER ADVERTISEMENT THAN MENU ITEMS. THE MAXIMUM LUMINANCE PRODUCED BY THE MENU BOARD DISPLAY SHALL NOT EXCEED 3/10THS FOOT CANDLES GREATER THAN AMBIENT LIGHT LEVELS. THE SIGN HAS AUTOMATIC DIMMING CAPABILITIES TO ADJUST THE SIGN'S ILLUMINATION TO THE AMBIENT LIGHT LEVELS.



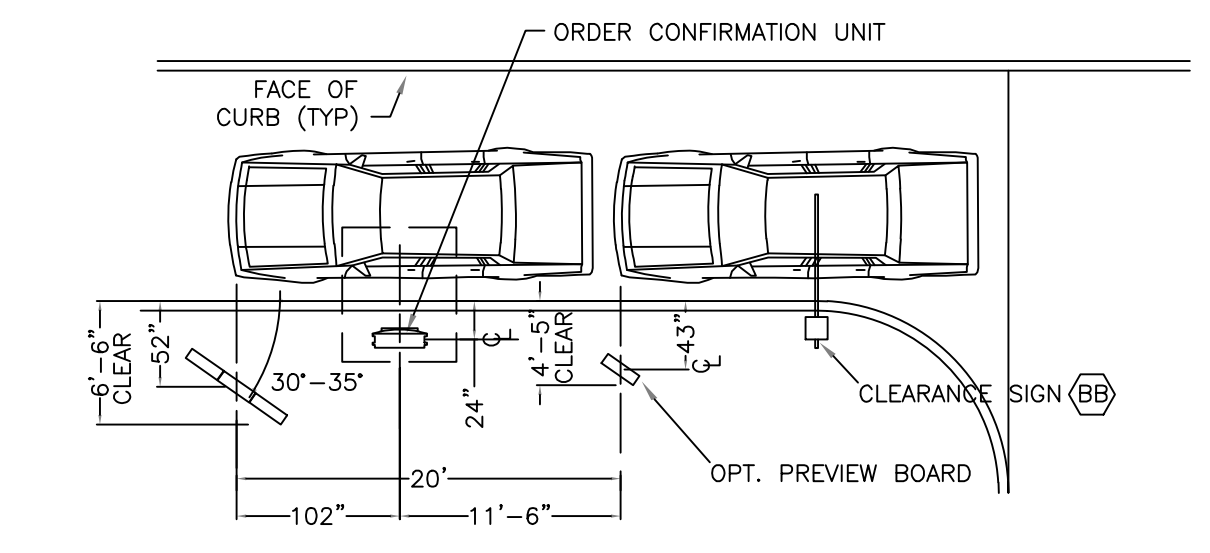
PAINTED TRAFFIC ARROWS
N.T.S.



DIRECTIONAL SIGN
N.T.S.

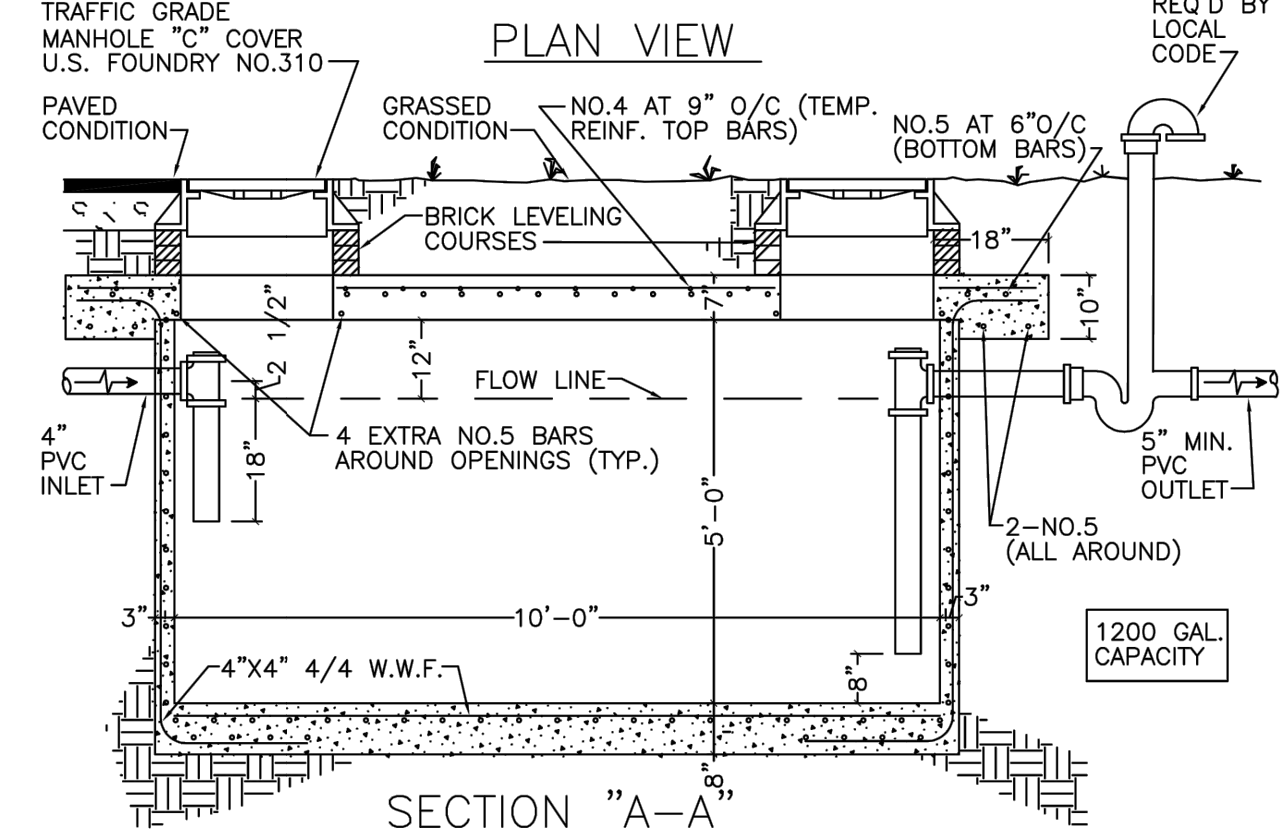
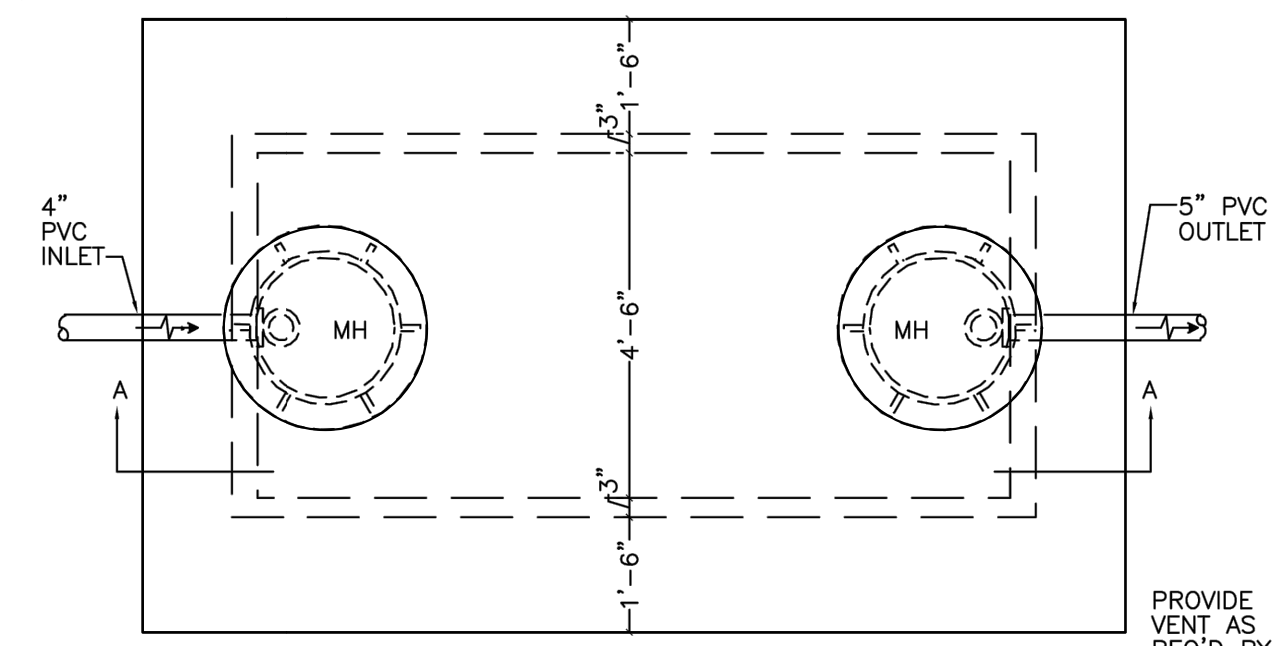


MINIMUM LAYOUT
DRIVE-THRU ORDER STATION 2020 IMAGE
N.T.S. MARCH 22, 2018



PREFERRED LAYOUT
DRIVE-THRU ORDER STATION 2020 IMAGE
N.T.S.

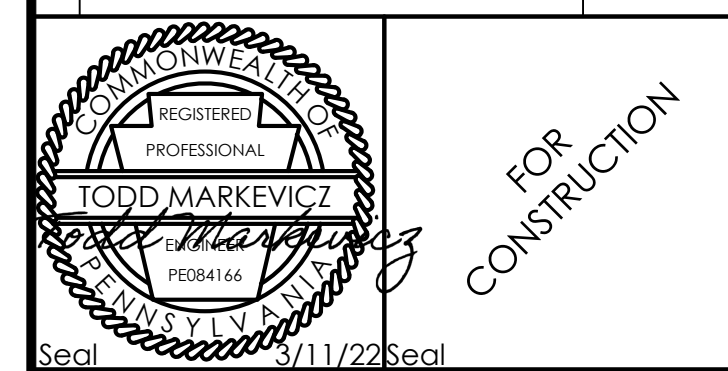
NOTE: THE PREFERRED LAYOUT SHOULD BE USED WHENEVER SPACE ALLOWS. 30° ROTATION ANGLE SHOULD BE CONSIDERED OPTIMAL. ANGLES BETWEEN THE PREFERRED LAYOUT AND MINIMUM LAYOUT ARE ACCEPTABLE AS LONG AS:
(1) THE DISTANCES FROM THE CENTERLINES OF THE SUPPORT POLES OF THE MENU BOARD AND PREVIEW BOARD TO THE FACE OF CURB ARE REDUCED BY 4" FOR EVERY 5 DEGREES OF ROTATION, AND;
(2) THE DISTANCE FROM THE CENTERLINE OF THE ORDER CONFIRMATION UNIT AND THE CENTERLINE OF THE MENU BOARD IS REDUCED BY 3" FOR EVERY 5 DEGREES OF ROTATION.
THE CENTERLINE OF MENU BOARD TO CENTERLINE OF PREVIEW BOARD REMAINS AT 20".



NOTES:
1. PRECAST UNITS ARE APPROVED FOR USE PER ABOVE DESIGN AND DIMENSIONS.
2. BITUMASTIC COATING ON BOTTOM AND ALL SIDES (EXTERIOR ONLY).
3. LOCAL STANDARD CODE SHALL APPLY IF REQUIREMENTS EXCEED THIS STANDARD DETAIL.

TYPICAL GREASE INTERCEPTOR
NOT TO SCALE APRIL 21, 2008 23

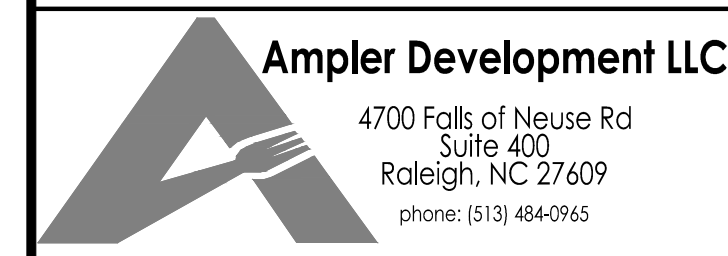
Issued:	Date:
A	
B	
C	
D	
E	
F	
G	
H	
Revisions:	Date:
1 Revised per Addendum #1	02/08/22
2	
3	
4	
5	
6	
7	
8	



Seal
CIVIL ENGINEER OF RECORD
Name: Todd G. Markevich
Penn. License No.: PE084166
Exp. Date: September 30, 2023
Firm Approval No.: 002215

Copyright © 2022
APD Engineering & Architecture, LLC
Drawing Alteration
It is a violation of law for any person, unless acting under the direction of licensed Architect, Professional Engineer, Landscape Architect, or Land Surveyor to alter any item on this document in any way. Any licensee who alters this document is required by law to affix his or her seal and to add the notation "Altered By" followed by his or her signature and the specific description of the alteration or revision.

DO NOT SCALE PLANS
Copying, Printing, Software and other processes required to produce these prints can stretch or shrink the actual paper or layout. Therefore, scaling of this drawing may be inaccurate. Contact Engineer of Record with any need for additional dimensions or clarifications.



Burger King Store #:
322 Poltstown Ave.
Pensburg, PA 18073
Montgomery County (Pensburg Borough)
Project Name & Location:

Details Sheet	
Drawing Name:	Project No.
Date: 01/21/22	21-0327
Type:	C8
Drawn By: SAS	Drawing No.
Scale: N.T.S.	