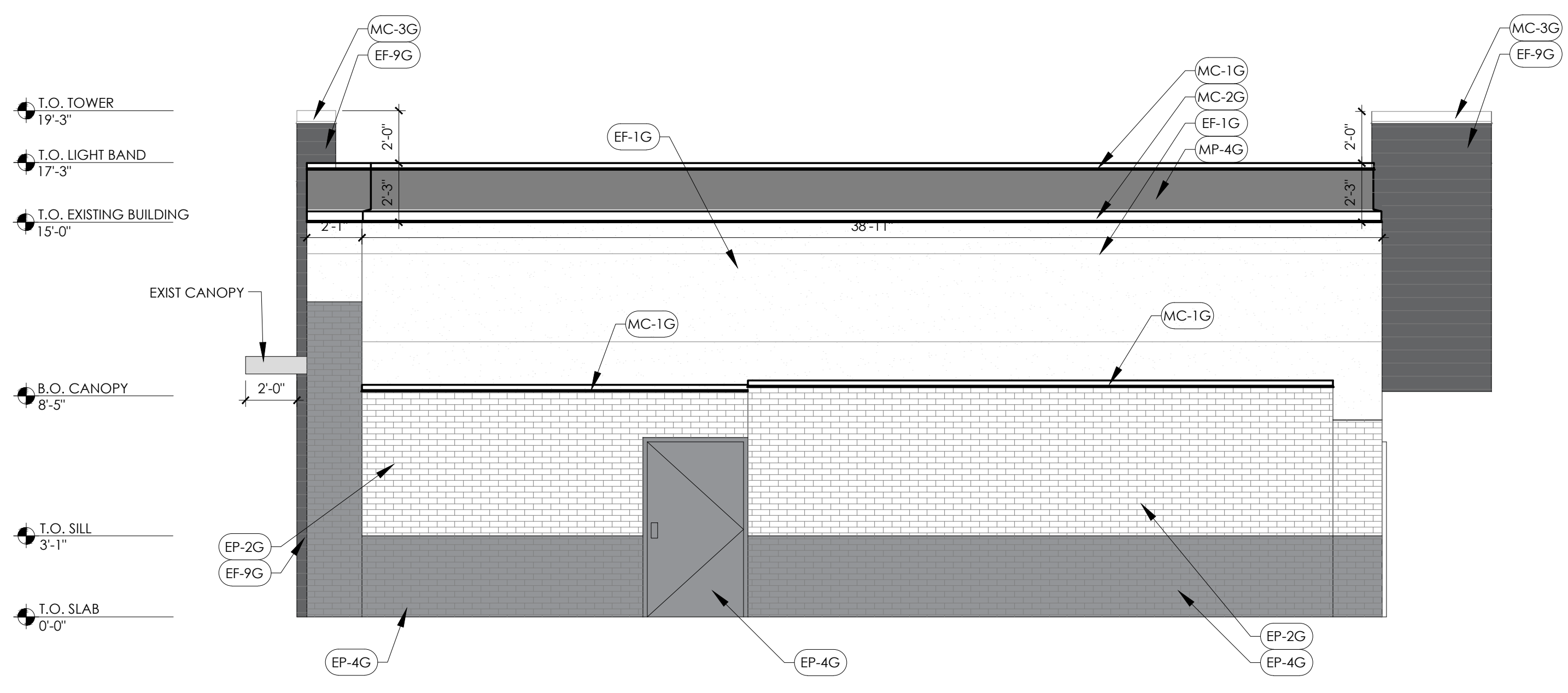


3 DRIVE THRU ELEVATION
SCALE: 1/4" = 1'-0"



4 REAR ELEVATION
SCALE: 1/4" = 1'-0"

GENERAL NOTES

MERCHANDISING AND GRAPHICS NOTE:
WALL FINISHES PER SCHEDULE ARE REQUIRED ON WALL BEHIND GRAPHICS AND MERCHANDISING.

FINISH NOTES:
ALL FINISHES AS PER GARDEN GRILL SCHEDULE.

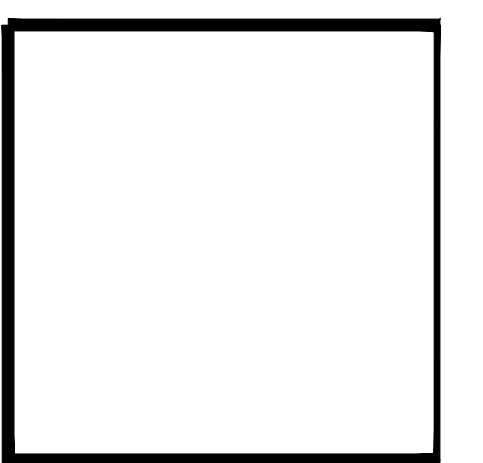
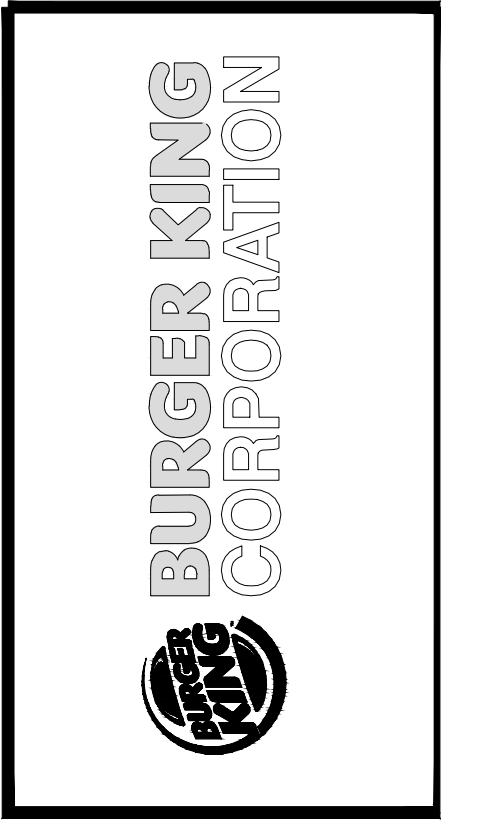
FOR CLARIFICATION:
"LIGHT BAND IS A SCREENED UNIT. ONLY THE LIGHT WASH IS SEEN AS PART OF THE BANDING UNIT."

SECTION TAG	DOOR TAG	WINDOW TAG	MATERIAL TAG
A-#	#	-	AA-#
	SEE SHEET A-1,1	SEE SHEET A-1,1	SEE SHEET A-2

EXTERIOR MATERIALS & FINISH SCHEDULE					
TAG	MATERIAL	LOCATION	MANUFACTURER	PRODUCT	COLOR
EB-1G	EXTERIOR BRICK	GENERAL	EVOLUTION BRICK	MOD/QS TUMBLED (FULL BRICK)	OLDE HILLSBORO
			PINE HALL BRICK	(THIN BRICK)	SIERRA TUMBLED
			H.C. MUDDOX BRICK	FACE BRICK	OLD IRVINGTON O/S
				THIN BRICK	BK WEST COAST BLEND
EB-1AG (ALTERNATE FOR EB-1G)	EXTERIOR FINISH FIBER CEMENT BRICK PANELS	GENERAL	NICHIHA FIBER CEMENT	NICHIHA CANYON BRICK PANELS	"SHALE BROWN" - STAGGERED JOINTS UNPAINTED IF NO OTHER BRICK IS PRESENT. (ON REMODELS, IF THERE IS ANY EXISTING BRICK ON THE BUILDING, THE EXISTING BRICK AND THE NICHIHA BRICK MUST BE PAINTED TO MATCH EP-4G.)
EF-1G	EXTERIOR FINISH-FIBER CEMENT SIDING PANELS	GENERAL	NICHIHA FIBER CEMENT	NICHIHA TUFFBLOCK	PREPAINTED TO MATCH EP-2G-PPG "TANNERS TAUPE" STACKED BOND PATTERN
EF-4G	EXTERIOR FINISH STUCCO	GENERAL	STO OR APPROVED EQUAL	STO POWERWALL STUCCO SYSTEM	COLOR TO MATCH EP-4G PPG "MONTEREY CLIFFS"
EF-8G (ALTERNATE FOR EF-9G)	EXTERIOR FINISH STONE	EXTERIOR SIGN ARCHONS	BORAL STONEPRODUCTS	COUNTRY LEDGESTONE	"ASPEN"
EF-9G	EXTERIOR FINISH FIBER CEMENT	EXTERIOR SIGN ARCHONS	NICHIHA FIBER CEMENT	NICHIHA BOARD : VINTAGE WOOD EF762	"CEDAR"
TR-1G	ALUMINUM TRIMS	EXTERIOR GENERAL			
EP-2G	EXTERIOR PAINT	EXTERIOR WAINSCOT		PRIMER:17-921 PAINT: 1023-4	"DESERT DUNE"
EP-4G	EXTERIOR PAINT	LOGO SIGN CABINETS & BURGER KING CHANNEL LETTER CABINETS		PRIMER:17-921 PAINT: 1022-6	"GRANITE"
EP-6AG	EXTERIOR PAINT	EXISTING MANSARD ROOFS, SHINGLES & BARREL TILE	PPG	PRIMER: 6-212 PAINT: 1010-4	"STEPPING STONE"
EP-6BG	EXTERIOR PAINT	EXISTING STANDING SEAM METAL ROOF		PRIMER: 17-921 PAINT: 1001-1	"DOVER GRAY"
EP-8BG	EXTERIOR PAINT	METAL COPING AT ARCHON TOWERS		PRIMER: 90-712 PAINT: 1009-4	"GRAY STONE"
EXT-G	EXTERIOR PAINT	POLES & SIGNS		PRIMER:17-921 PAINT: 1079-6	"CARAVEL BROWN"
EP-2G	EXTERIOR PAINT	EXTERIOR GENERAL		PRIMER:90-712 PAINT: 90-353	"BLACK"
EP-4G	EXTERIOR PAINT	EXTERIOR WAINSCOT		PRIMER: LOXON CONCRETE & MASONRY A24W300 PAINT: SUPERPAINT EXT SATIN A89 SERIES	"TAUPE TONE SW 7633 SATIN
EP-6G	EXTERIOR PAINT	LOGO SIGN CABINETS & BURGER KING CHANNEL LETTER CABINETS		PRIMER: KEM BOND HS B50A28 PAINT: SILVER BRITE B59511	"HOMESTEAD BROWN" SW 7515 SATIN
EP-6AG	EXTERIOR PAINT	EXISTING MANSARD ROOFS, SHINGLES & BARREL TILE	SHERWIN-WILLIAMS	PRIMER:PRO INDUSTRIAL PRO-CRYL PRIMER B66-310 PAINT: PRO INDUSTRIAL HIGH PERFORM. ACRYLIC B66-660	FACTORY FINISH SILVER
EP-6BG	EXTERIOR PAINT	EXISTING STANDING SEAM METAL ROOF			"WESTCHESTER GRAY" SW 2849 EGG SHELL
EP-8G	EXTERIOR PAINT	METAL COPING AT ARCHON TOWERS			"MARCH WIND" CUSTOM FORMULA EGG SHELL
EXT-G	EXTERIOR PAINT	POLES & SIGNS			"CEDAR" CUSTOM FORMULA SEMI-GLOSS
ECT-1G	EXTERIOR CERAMIC TILE	ACCENT AT BUILDING FRONT	GRANITI GIANDRE / EUROWEST	SENSIBLE STONE ED5052	"TRICORN BLACK" SW 6258 GLOSS
MC-1G	METAL COPING	TOP OF LIGHT BAND WALL CAP			"RED NATURAL" STACKED BOND PATTERN
MC-2G	METAL COPING	BELOW LIGHT BAND	W.P. HICKMAN SYSTEMS, INC.	PERMA SNAP PLUS	A-30 "SILVERSMITH"
MC-3G	METAL COPING	TOP OF ARCHON		PERMA SNAP PLUS	FACTORY FINISH TO MATCH EP-2G PPG "TANNERS TAUPE"
MP-1G	METAL CANOPY	PARAPET LIGHT BAND	LEKTRON	LED LIGHT BAND	TO BE PAINTED TO MATCH EP-8G "CEDAR"
MP-3G	METAL CANOPY	ABOVE DOORS/WINDOWS	*SEE APPROVED SIGN SUPPLIES *SEE APPROVED CANOPY SUPPLIES	CUSTOM METAL CANOPY	COLOR: CLEAR ANODIZED
MP-4G	METAL AWNING/SMM ROOFING	ABOVE WINDOWS/MANSARD ROOFING	PROVIDED BY LEXTRON SMOOTH LIGHBAND		SILVER METALLIC SR
			PROVIDED BY LEXTRON SMOOTH LIGHBAND		PREMIUM METALLIC - ZINC COTE
EGR-3G	GROUT	BRICK	MAPEI		#5 "CHAMOIS"
EGR-4G	GROUT	CERAMIC TILE	CUSTOM BUILDING PRODUCTS	POLYBLEND SANDED	#335 "WINTER GRAY"
EGR-9G	GROUT	INLINE RESTAURANT ONLY CERAMIC TILE	LATICRETE	POLYBLEND SANDED	#66 "CHESTNUT BROWN"
S-1	LOGO SIGN (AS NOTED)	AT TOWER	CUSTOM		
S-2	FLAME GRILLING SINCE 1954 OR HOME OF THE WHOPPER	AT TOWER	CUSTOM		

No.	Date	By	Notes
Drawn By:			
Checked:			
Scale: AS NOTED			
Date:			

ALL RIGHTS RESERVED. NO PART OF THESE DRAWINGS OR SPECIFICATIONS MAY BE REPRODUCED OR USED IN CONNECTION WITH ANY WORK OTHER THAN THE SPECIFIC PROJECT FOR WHICH THEY HAVE BEEN PREPARED, WITHOUT PRIOR WRITTEN AUTHORIZATION FROM THE ARCHITECT.



PROJECT BURGER KING #4327 1084 S STATE ST. DAVISON, MI 48423	SHEET TITLE PROPOSED EXTERIOR ELEVATIONS
DO NOT SCALE THIS PRINT. USE FIGURED DIMENSIONS ONLY.	
JOB #	TG-22708
SHEET	A-1.1