



June 4, 2020

JETZ Foods, LLC  
6120 Shallowford Road, Suite 105  
Chattanooga, TN 37421

ATTENTION: Mr. Billy Jensen  
[billy@myfreshtaco.com](mailto:billy@myfreshtaco.com)

Subject: **LETTER OF INFILTRATION TESTING RESULTS**  
Proposed Del Taco Restaurant  
Joe Frank Harris Parkway  
Cartersville, Georgia  
GEOS Project Number 41-20148A

Dear Mr. Jensen:

GEOServices, LLC (GEOS) has completed infiltration testing observations, as requested for the proposed Del Taco restaurant site located in the southeastern quadrant of the intersection of Joe Frank Harris Parkway and East Felton Road in Cartersville, Georgia. The property currently consists of a single parcel which currently houses an existing gas station structure, along with the gas pump canopy and the associated parking/drive areas. We understand that these structures will be demolished prior to the proposed construction. The site is relatively level and asphalt covered around the existing structures. Based on the proposed plans prepared by Miller-McCoy, Inc., we understand that the project will consist of a new restaurant structure and the associated parking and drive areas. Additionally, we anticipate that infiltration areas will be located within the proposed parking areas. GEOServices previously prepared a *Report of Geotechnical Exploration*, dated February 28, 2020, for the proposed development.

GEOServices personnel completed the requested four (4) infiltration tests. Each of which were performed in the northeastern proposed parking areas surrounding boring B-5 from the previous exploration. These locations were selected by GEOServices personnel based on information provided by Miller McCoy personnel. A detailed location plan can be found in the attachments with this report. A Geoprobe drill rig was utilized to drill each of the four soil borings to an approximate depth of 4 feet. These depths were selected by Miller McCoy personnel. The infiltration tests were completed at these requested depths in each of the borings. At each location, the casing was filled with two feet of water and the water was

allowed to presoak. After presoaking, the two-foot water level was re-established, with readings taken every hour, and the process repeated for a total of four hours. The final infiltration test results were completed on May 26, 2020. The following table presents the findings recorded during the final test interval.

Location	Depth (ft)	Infiltration Rate (in./hr)
I-1	4	0.18
I-2	4	0.24
I-3	4	0.12
I-4	4	0.36

*Note: Depths reference the existing ground surface elevation at the time of exploration.*

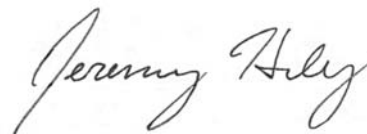
GEOServices looks forward to continuing to work with you on this project. If you have any questions or require additional information, please feel free to call us.

Sincerely,

**GEOServices, LLC**

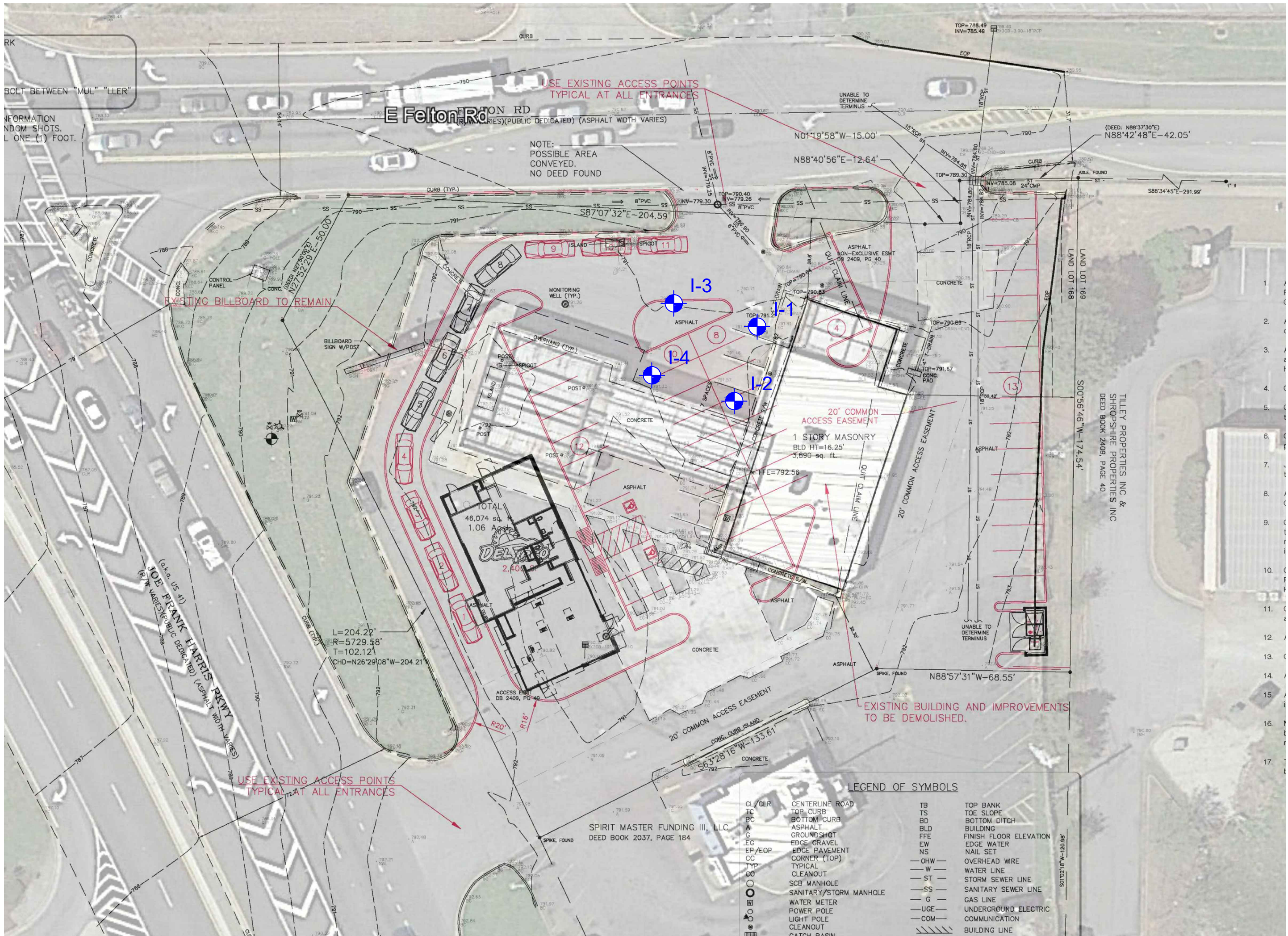


Derek K. Kilday, P.E. (TN)  
V.P. – Chattanooga Area Manager



Jeremy T. Haley, P.E. (TN)  
Geotechnical Engineer

Attachments: Figure 1 – Infiltration Location Plan



- NOTES:**
- 1.) INFILTRATION LOCATIONS ARE SHOWN IN GENERAL ARRANGMENT ONLY.
  - 2.) DO NOT USE INFILTRATION LOCATIONS FOR DETERMINATIONS OF DISTANCES OR QUANTITIES.
  - 3.) BASE MAP PROVIDED BY MILLER-MCCOY, INC.
- ☑ LOCATION OF INFILTRATION TEST

**INFILTRATION LOCATION PLAN**  
**Del Taco - Joe Frank Harris Pkwy**  
 Cartersville, Georgia

<b>DRAWN BY:</b>	JTH
<b>APPROVED BY:</b>	DKK
<b>SCALE:</b>	NTS
<b>JOB NO.:</b>	41-20148A
<b>DATE:</b>	6/4/2020

**GEOS**  
 Geoservices, LLC - Geotechnical and Materials Engineers  
 Phone: (423) 614-6471  
 Fax: (423) 614-6479  
 5350 North Lee Highway  
 Cleveland, Tennessee 37312

**FIGURE 1**

**LEGEND OF SYMBOLS**

CL/CLR	CENTERLINE ROAD	TB	TOP BANK
TC	TOP CURB	TS	TOE SLOPE
BC	BOTTOM CURB	BD	BOTTOM DITCH
A	ASPHALT	BLD	BUILDING
G	GROUNDSHOT	FFE	FINISH FLOOR ELEVATION
EG	EDGE GRAVEL	EW	EDGE WATER
EP/EOP	EDGE PAVEMENT	NS	NAIL SET
CC	CORNER (TOP)	—OHW—	OVERHEAD WIRE
TYP	TYPICAL	—W—	WATER LINE
CO	CLEANOUT	—ST—	STORM SEWER LINE
○	SCB MANHOLE	—SS—	SANITARY SEWER LINE
○	SANITARY/STORM MANHOLE	—G—	GAS LINE
○	WATER METER	—UG—	UNDERGROUND ELECTRIC
○	POWER POLE	—COM—	COMMUNICATION
○	LIGHT POLE	▨	BUILDING LINE
○	CLEANOUT		
○	CATCH BASIN		