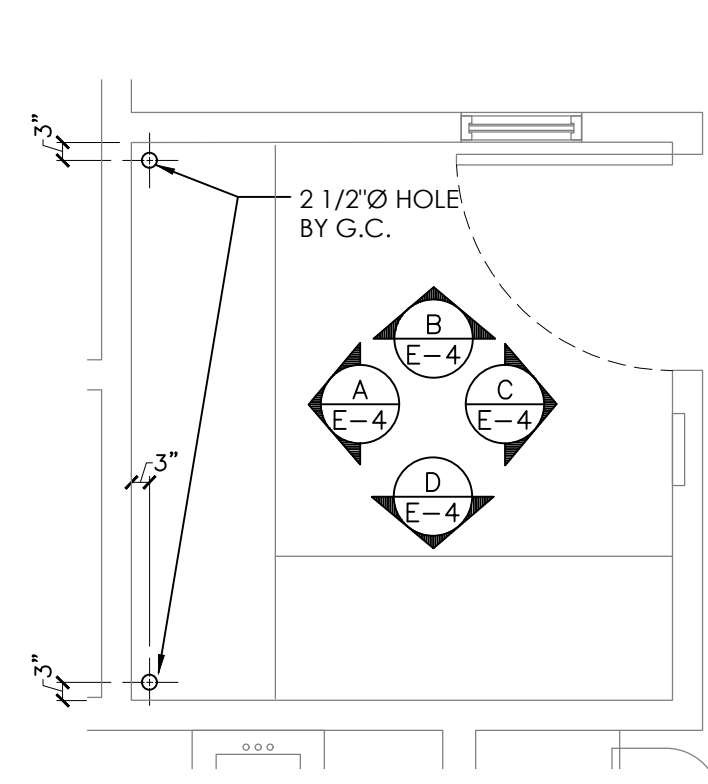
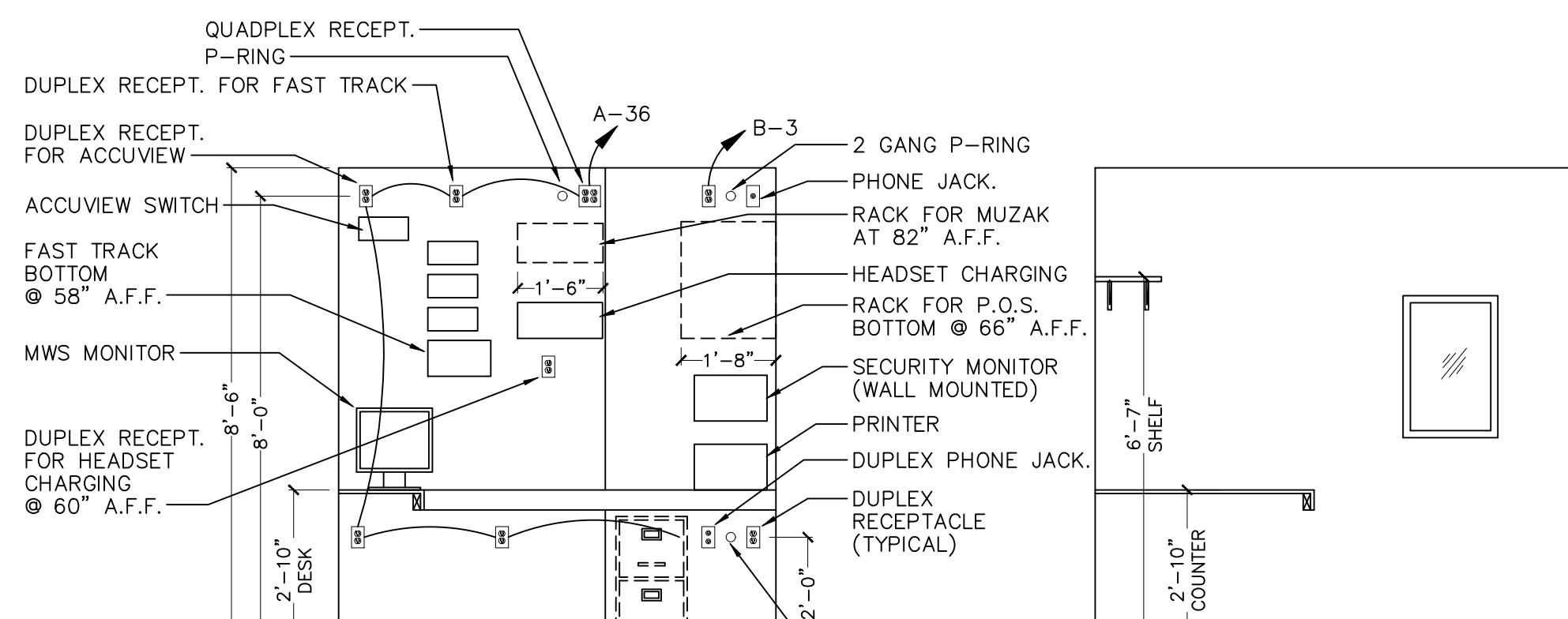


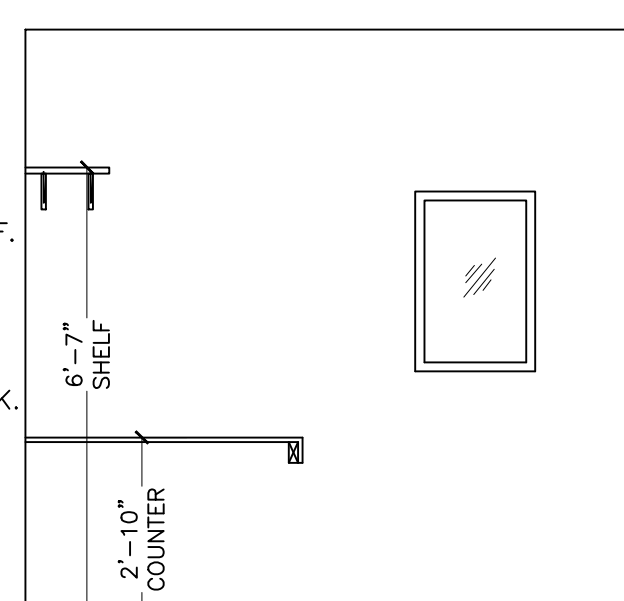
**1 TECHNOLOGY PLAN**  
SCALE: 1/4" = 1'-0"



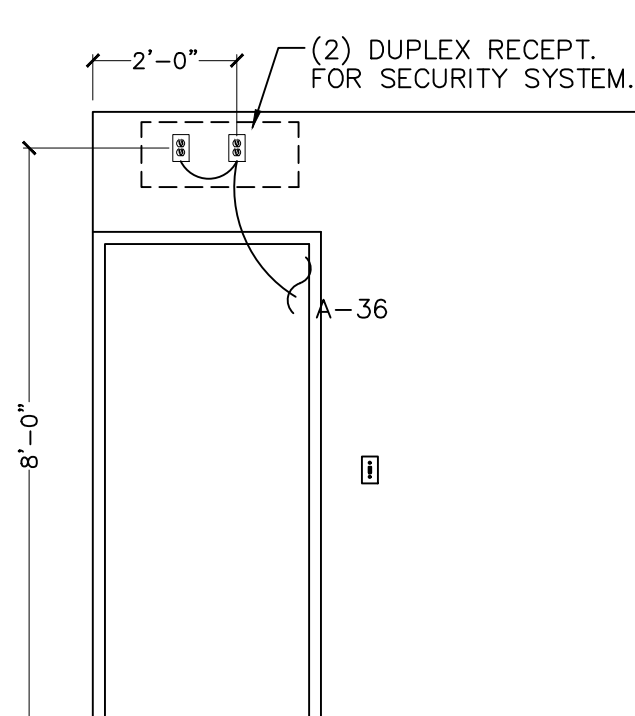
**3 OFFICE PLAN**  
SCALE: 3/8" = 1'-0"



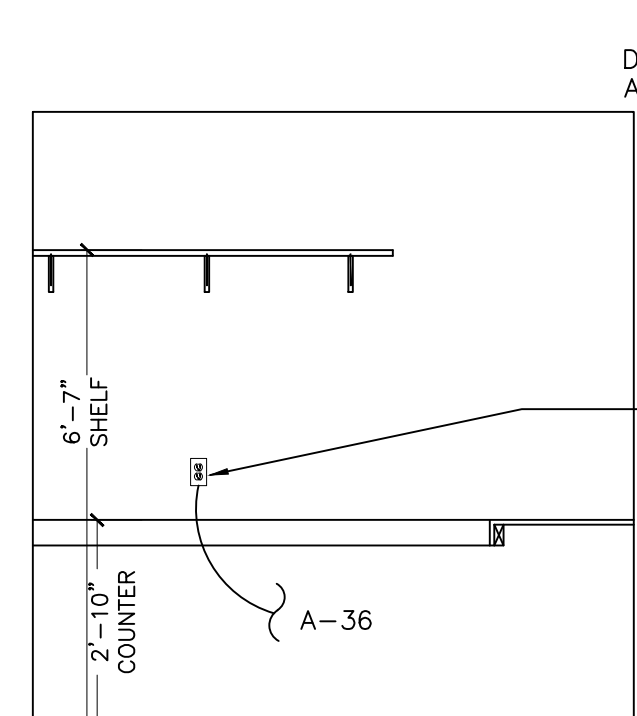
**A ELEVATION**  
SCALE: 3/8" = 1'-0"



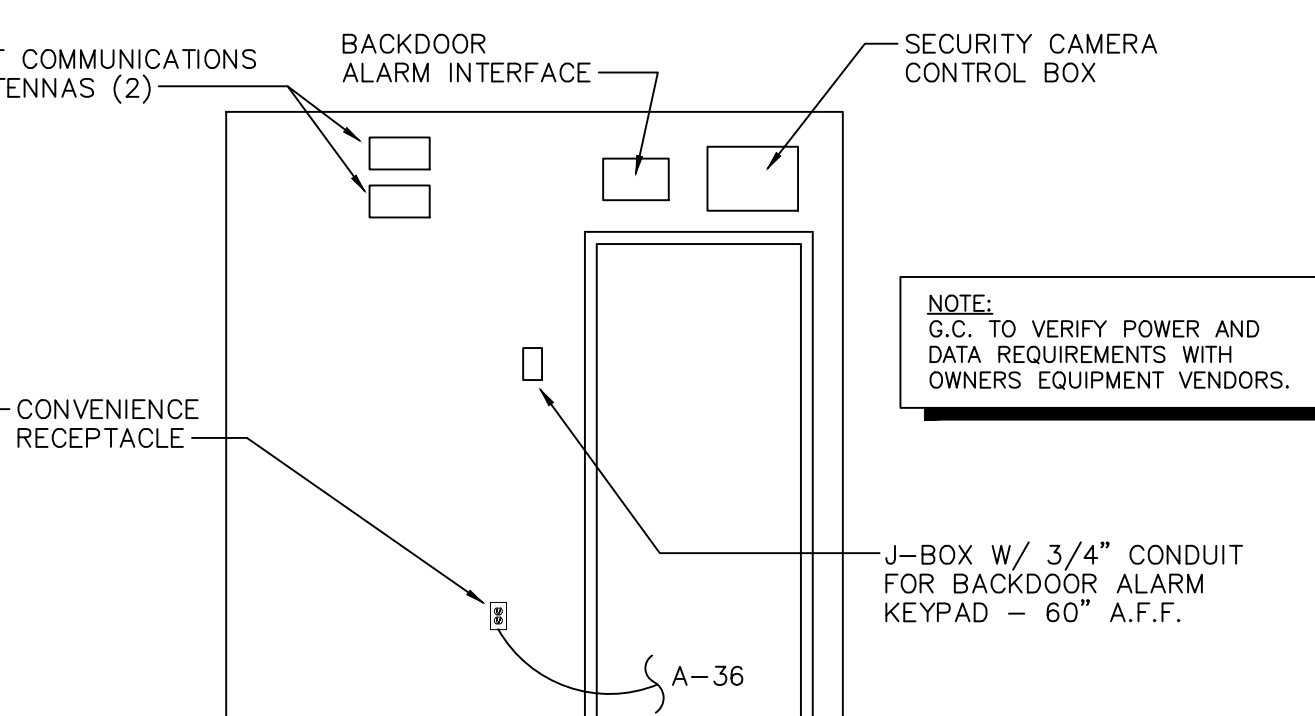
**B ELEVATION**  
SCALE: 3/8" = 1'-0"



**C ELEVATION**  
SCALE: 3/8" = 1'-0"



**D ELEVATION**  
SCALE: 3/8" = 1'-0"



**E ELEVATION**  
SCALE: 3/8" = 1'-0"

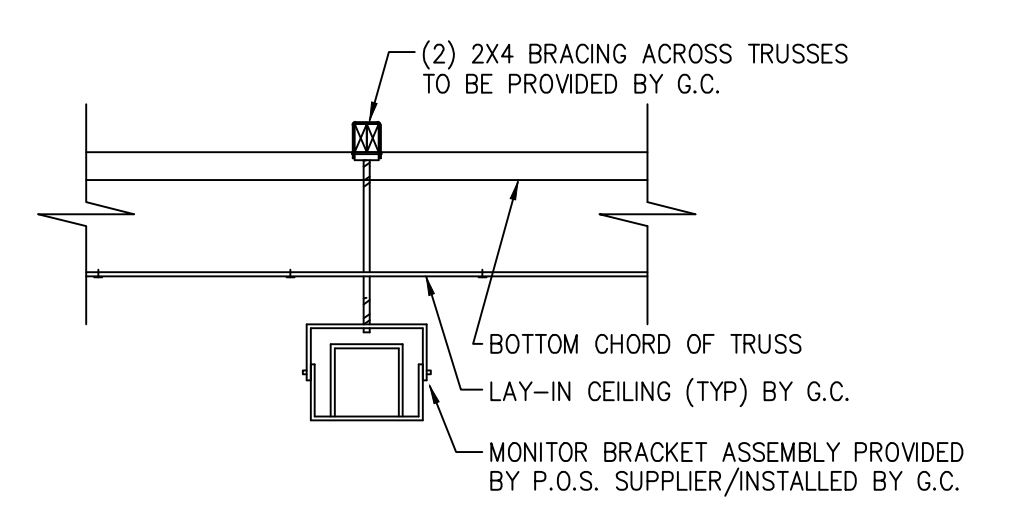
**GENERAL NOTES:**

- A. CONTRACTOR TO VERIFY WHICH SYSTEM IS TO BE INSTALLED. REQUIREMENTS CAN VARY DEPENDING ON MANUFACTURER. THE CONTRACTOR IS CAUTIONED TO VERIFY ALL REQUIREMENTS PRIOR TO CONSTRUCTION.
- B. CONTRACTOR TO PROVIDE ALL RECEPTACLE OUTLETS, CONDUITS AND J-BOXES AS INDICATED ON PLAN.
- C. CONTRACTOR TO VERIFY AND COORDINATE LOCATION OF VIDEO DISPLAY DEVICES W/ BURGER KING REPRESENTATIVE.
- D. MAINTAIN P.O.S. CABLES A MIN. OF 12" AWAY FROM ANY FLUORESCENT LIGHT SOURCES ABOVE CEILING.
- E. ELECTRICAL CONTRACTOR TO IDENTIFY P.O.S. JUNCTION BOXES ABOVE CEILING "GROUND P.O.S. ONLY".

**KEYED PLAN NOTES:**

- 1 DISPLAY #1 AND BUMP BAR. PROVIDE 4" CONDUIT FOR VIDEO, BUMP BAR AND PRINTERS. PROVIDE CEILING MOUNTED RECEPTACLES. (TYPICAL FOR DISPLAY #1, #2 AND #3)
- 2 DISPLAY #2 AND BUMP BAR
- 3 DISPLAY #3 AND BUMP BAR
- 4 STOCK LEVEL LIGHT CONTROLLER @ 60" A.F.F.
- 5 TOTAL SERVICE TIME DISPLAY
- 6 GRADE DISPLAY
- 7 CLOCK-RECEPT. IN CHASE
- 8 STOCK LEVEL DISPLAY RECEPT. IN CHASE
- 9 EQUIPMENT MOUNTED RECEPTACLES BY K.E.S. CIRCUITING RUNS BY E.C.
- 10 J-BOX W/ 3/4" CONDUIT @ 84" A.F.F.
- 11 CEILING MOUNTED D/T TIMER WINDOW TIME DISPLAY
- 12 90" A.F.F. FOR D/T LAND MONITOR.
- 13 P-RING @ 24" A.F.F. W/ 1" CONDUIT TO ABOVE CLG.
- 14 J-BOX W/ 1" CONDUIT TO CLG. FOR PHU DATA CABLE. (LOCATE NEXT TO PHU RECEPT.)
- 15 SECURITY CAMERA (TYPICAL)
- 16 SECURITY MONITOR (TYPICAL)

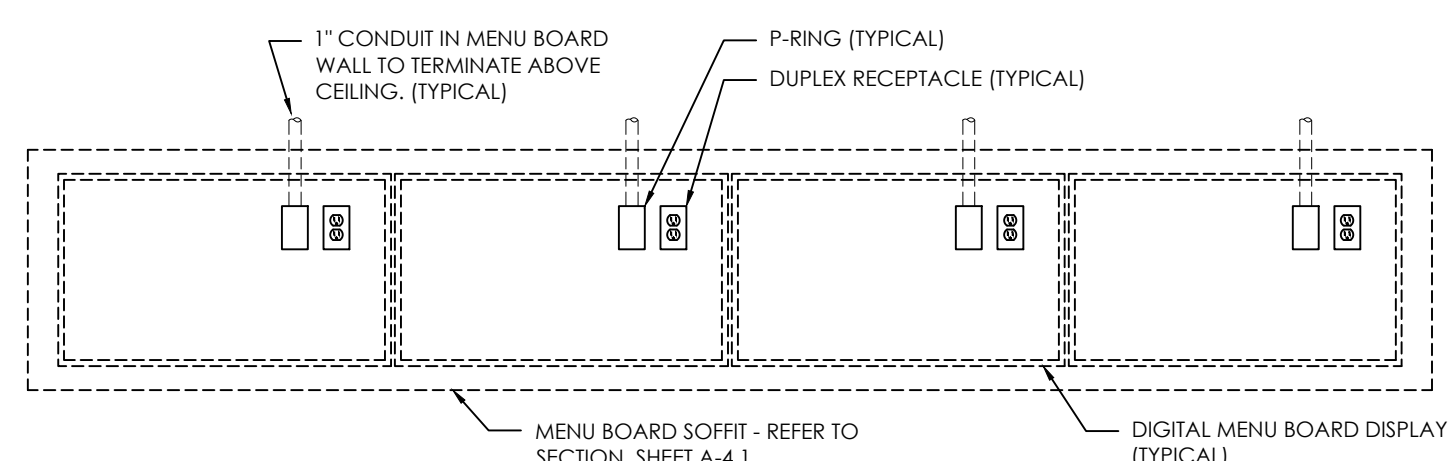
SYMBOL LEGEND	
DETAIL	DESCRIPTION
⊖	DUPLX 125V-20A-2 POLE-3 WIRE STRAIGHT BLADE RECEPTACLE OUTLET - WALL MTD. (24" A.F.F., - U.O.N.)
⊖	SINGLE 125V-20A-2 POLE-3 WIRE STRAIGHT BLADE RECEPTACLE OUTLET - WALL MTD. (24" A.F.F., - U.O.N.)
⊖	DRYWALL P-RING
⊖	BUMP-BAR
⊖	TELEPHONE OUTLET FOR P.O.S. MODEM (ALL OUTLETS HOMERUN IN 3/4" CONDUIT TO TELEPHONE BACKBOARD) MOUNT 96" A.F.F.
⊖	P.O.S. PRINTER DEVICE
⊖	P.O.S. REGISTER DEVICE
⊖	VIDEO DISPLAY DEVICE (CEILING MTD.)
⊖	SECURITY CAMERA BY "PRIVID-EYE" CONTACT: LARRY SATTLER, 954-581-1756
⊖	SECURITY MONITOR BY "PRIVID-EYE" PROVIDE DUPLX RECEPTACLE @ 84" A.F.F. (VERIFY) CONNECT TO P.O.S. CIRCUIT



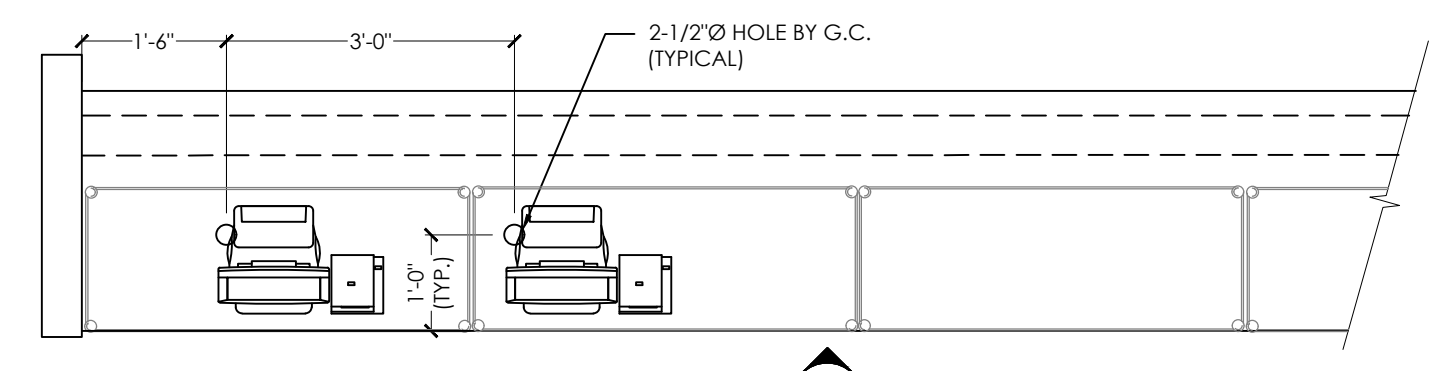
**2 VIDEO HANGING BRACKET**  
SCALE: NONE

**NOTES:**

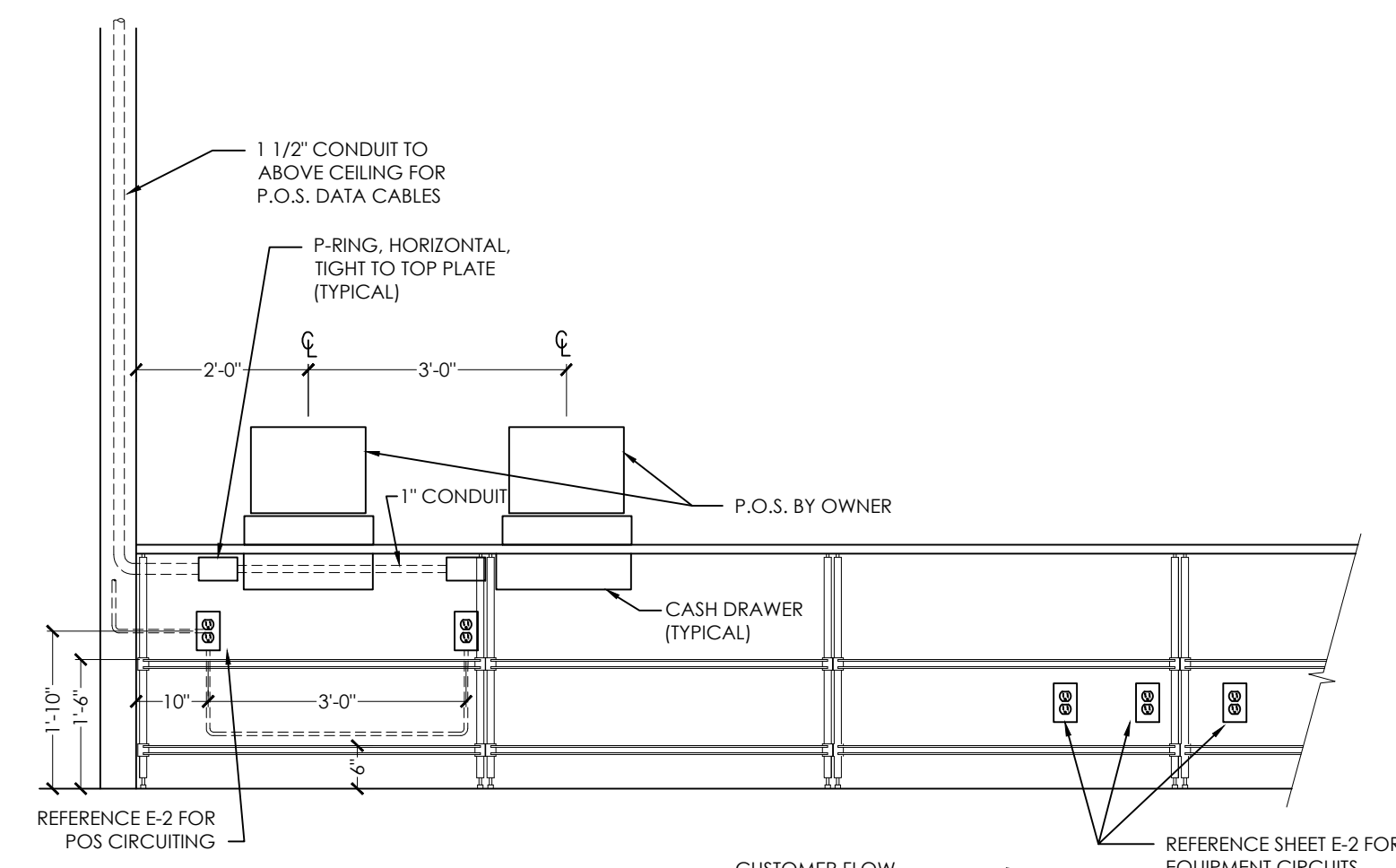
- 1. (1) DUPLX RECEPTACLE PER SCREEN
- 2. (1) P-RING PER SCREEN WITH 1" CONDUIT TO ABOVE CEILING. DATA CABLE TO RUN TO MEDIA PLAYER(S) IN OFFICE
- 3. VERIFY NUMBER OF SCREENS USED (3 OR 4) PRIOR TO INSTALLATION OF RECEPTACLES AND P-RINGS.
- 4. DETERMINE SCREEN AND MOUNTING BRACKET MODELS PRIOR TO INSTALLATION OF RECEPTACLES AND P-RINGS.
- 5. REFER TO SHEET E-2, POWER PLAN FOR CIRCUITING REQUIREMENTS.



**4 DIGITAL MENU BOARD INSTALLATION**  
SCALE: 1/2" = 1'-0"



**5 SERVICE COUNTER PLAN**  
SCALE: 1/2" = 1'-0"



**B KITCHEN SIDE COUNTER ELEVATION**  
SCALE: 1/2" = 1'-0"

Issued:	Date
A BKC Approval	10/29/2
B Permit Set	1/28/2C
C Bid Set	4/25/2C
D	
E	

Revisions:	Date
1	
2	
3	
4	
5	
6	
7	
8	
9	

Seal PROJECT ARCHITECT/ENGINEER DATE  
PROJECT LEAD DATE  
PROJECT DESIGNER DATE

Copyright © 2022 APD Engineering & Architecture, L.L.C.  
Drawing Alteration  
It is a violation of law for any person, unless acting under the direction of a Licensed Architect, Professional Engineer, Landscape Architect, or Land Surveyor to alter any item on this document in any way. Any licensee who alters this document is required by law to affix his or her seal and add the notation "Altered By" followed by his or her signature and its specific description of the alteration or revision.

DO NOT SCALE PLANS  
Copying, Printing, Software and other processes required to produce these prints can stretch or shrink the actual paper or layout. Therefore scaling of this drawing may be inaccurate. Contact APD E&A with or need for additional dimensions or clarifications.



Burger King Inc.  
Store #  
108 Egg Harbor Road  
Sewell, NJ 08080  
Gloucester County  
Project Name & Location:

Technology Plan  
Drawing Name: Project No.  
Date: 11/8/2021 21-0458  
Type: BK ROC-60  
Drawn By: MK E-4  
Scale: As Noted Drawing No.