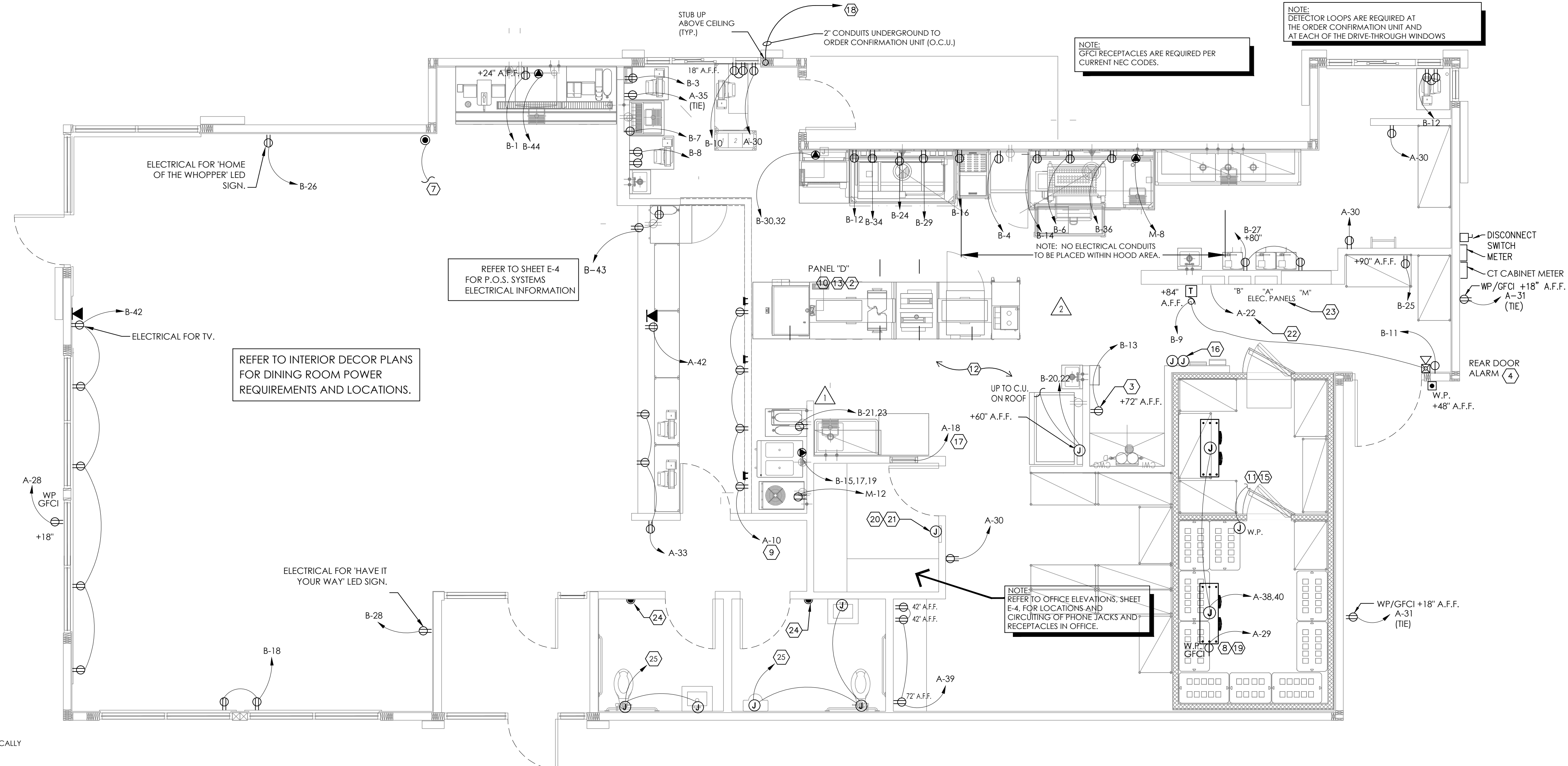


KEYED NOTES - PLAN:

- FRYER HOOD: PRE-WIRED (WITH RECEPTACLES BY HOOD MANUFACTURER. ELECTRICAL CONTRACTOR TO MAKE CONNECTION AT JUNCTION BOX AT THE TOP OF THE HOOD.
- BROILER HOOD: PRE-WIRED (WITH DUPLEX RECEPTACLES) BY HOOD MANUFACTURER. ELECTRICAL CONTRACTOR TO MAKE CONNECTION AT JUNCTION BOX AT THE TOP OF THE HOOD. ELECTRICAL CONTRACTOR TO PROVIDE RECEPTACLE AND COVER PLATE FOR THE OVEN AND BROILER BASED ON EQUIPMENT SELECTED.
- ELECTRICAL CONTRACTOR TO RUN CONDUITS AND WIRE THROUGH THE EQUIPMENT CHASE AND CONNECT TO CIRCUITS PROVIDED IN THE JUNCTION BOX BY EQUIPMENT MANUFACTURER.
- VERIFY POWER REQUIREMENTS FOR SELECTED WATER HEATER.
- REAR DOOR ALARM: "MONITOR 4000" BY SECURITY PRODUCTS, INC. OR APPROVED EQUAL. MOUNT SIMPLE RECEPTACLE FOR POWER SUPPLY 6" ABOVE CEILING.
- PERMANENTLY CONNECTED KITCHEN EQUIPMENT NOT SUPPLIED WITH ON/OFF UNIT SWITCH (WHICH IS PART OF THE APPLIANCE) TO SERVE AS A DISCONNECTING MEANS. UNIT SHALL BE SUPPLIED WITH A DISCONNECT AS PER N.E.C., FURNISHED BY THE ELECTRICAL CONTRACTOR.
- G.C. TO VERIFY ELECTRICAL REQUIREMENTS FOR FIRE SUPPRESSION SYSTEM AND AUTO-SELENOID GAS SHUT-OFF VALVE.
- RUN 2" CONDUIT TO MANAGERS OFFICE FOR CABLE TV.
- HEAT TAPE IS PROVIDED BY THE WALK-IN BOX MANUFACTURER AND INSTALLED BY THE ELECTRICAL CONTRACTOR. CONTRACTOR SHALL COORDINATE INSTALLATION AND SUPPLY 120V CIRCUIT AND RECEPTACLE AS DIRECTED BY BOX MANUFACTURER.
- DIGITAL MENU BOARDS VERIFY 3 OR 4 BOARD INSTALLATION; PROVIDE (1) DUPLEX RECEPTACLE FOR 120V CIRCUIT AND (1) P-RING FOR DATA CABLE AT EACH MENU BOARD SCREEN. REFER TO DETAIL, SHEET E-4.
- STAINLESS STEEL SERVICE CHASE TO CEILING FURNISHED BY THE EQUIPMENT MANUFACTURER.
- CONTRACTOR SHALL OBTAIN WIRING DIAGRAM FROM THE WALK-IN BOX MANUFACTURER AND INSTALL AS DIRECTED.
- CONTRACTOR SHALL COORDINATED EQUIPMENT INSTALLATION WITH THE EQUIPMENT MANUFACTURER'S INSTALLATION PERSONNEL.
- PRE-WIRED BRANCH CIRCUITS DISCONNECTED FOR SHIPMENT TO BE RE-CONNECTED BY GC PER MANUFACTURER'S INSTALLATION SPECIFICATIONS.
- ELECTRICAL CONTRACTOR TO PROVIDE CORD AND PLUG AND WIRE TO BROILER BASED ON EQUIPMENT SELECTED.
- CONTRACTOR SHALL COORDINATE CONDUIT RUN BETWEEN FREEZER/COOLER EVAPORATORS AND ROOF-TOP REFRIGERATION UNIT WITH THE MANUFACTURER'S FURNISHED WIRING HARNESS.
- ELECTRICAL CONTRACTOR TO PROVIDE JUNCTION BOXES INSIDE WALL @ 48" A.F.F. WITH STUB-UPS TO CEILING FOR AMEREX PULL STATION AS REQUIRED BY EQUIPMENT SUPPLIER.
- SMOKE DETECTOR ALARM PANEL: REFER TO SHEET M-1 FOR LOCATION OF A/C UNITS SMOKE DETECTORS.
- (1) 2" CONDUIT TO BASE OF DRIVE-THROUGH ORDER STATION REFER TO THE DETAIL ON SITE PLAN.
- 6" BELOW CEILING FOR CONDENSATE DRAIN LINE TAPE HEATER.
- TO MASTER RELAY PANEL. REFER TO SHEET E-5
- MANUAL ON-OFF CONTROL PANEL. REFER TO SHEET E-5
- MASTER CONTROL PANEL. REFER TO SHEET E-5 AND NOTE #23, BELOW.
- RECESS ELECTRICAL CONTRACTOR PANEL & PANELS 'A', 'B', & 'M' IN FURRED OUT WALL ADJACENT TO EXTERIOR FRAMING. G.C. TO VERIFY PANEL SIZES PRIOR TO FURR-OUT TO INSURE ADEQUATE SPACE.
- PROVIDE VISUAL STORE ALARM MOUNTED AT 80" A.F.F. TIE TO N.Y. A.C. SMOKE ALARM SYSTEM.
- ALL RESTROOM FIXTURES TO BE AUTOMATIC, SENSORED, HANDS FREE, TOUCHLESS, CONTACTLESS FIXTURES. PROVIDE REQUIRED POWER SUPPLY FOR EACH LOCATION.



| ABBREVIATIONS | |
|---------------|--|
| A-3 | CONDUIT RUN WITH ARROW DENOTING HOMERUN. SUBSCRIPT INDICATES PANEL AND CIRCUIT NO. GROUND CONDUCTOR REQUIRED IN ALL CONDUITS BUT NOT INDICATED |
| GFCI | GROUND FAULT CIRCUIT INTERRUPTING |
| W.P. | WEATHERPROOF |
| A.F.F. | ABOVE FINISHED FLOOR. |
| I.G. | ISOLATED GROUND |

ELECTRICAL CONTRACTOR (EC) GENERAL NOTES:

- ALL WORK SHALL BE IN ACCORDANCE WITH THE NATIONAL ELECTRICAL CODE AND OTHER APPLICABLE CODES AND STANDARDS.
- ALL DEVICE BOXES SHALL BE INSTALLED FLUSH AND CONDUITS RUN CONCEALED IN FINISHED AREAS EXCEPT AS SPECIFICALLY SHOWN/NOTED OTHERWISE.
- INSTALL POWER AND CONTROL WIRING AND REQUIRED CONTROL COMPONENTS FOR AIR CONDITIONING SYSTEMS AS SHOWN/NOTED ON THE DRAWINGS AND PER OTHER APPLICABLE DRAWINGS/INSTRUCTIONS. REFERENCE MECHANICAL DRAWINGS.
- WIRE SIZE SHALL BE #12 (MINIMUM) UNLESS OTHERWISE NOTED. WIRE SIZES SMALLER THAN #6 AWG SHALL BE THHN/THWN. #6 AWG WIRE AND LARGER SHALL BE THW. UNLESS NOTED OTHERWISE.
- WIRE (CONDUCTOR) COLORS SHALL BE AS PER APPLICABLE CODES.
- ALL CONDUCTORS SHALL BE COPPER.
- ALL CONDUCTORS SHALL BE RUN IN CONDUIT, EXCEPT LOW VOLTAGE CONTROL AND COMMUNICATIONS CABLES.
- ALL MATERIALS SHALL BE UL APPROVED.
- ALL BRANCH CIRCUITS, EXCEPT INTERIOR LIGHTING, EXTERIOR BUILDING SIGNS, PARAPET LIGHTING AND SOFFIT LIGHTING TO HAVE A GREEN EQUIPMENT GROUNDING CONDUCTOR SIZED AS PER NEC 250-122.
- PVC (SCHEDULE 40) PERMITTED BELOW SLAB AND BELOW GRADE ONLY.
- IT IS INTENDED THAT AN EQUIPMENT GROUND CONDUCTOR (GREEN) SHALL BE RUN IN POWER CIRCUIT CONDUITS WHETHER OR NOT THE CONDUIT IS PVC.
- ALL EMPTY CONDUITS TO BE PROVIDED WITH NYLON PULL STRING.
- NEW TYPEWRITTEN PANEL DIRECTORY SHALL BE FURNISHED AFTER JOB IS COMPLETED REFLECTING ALL AS BUILT CONDITIONS.
- ALL BRANCH CIRCUITS SHALL BE PROPERLY PHASE BALANCED.
- ALL DATA EQUIPMENT TO BE FED BY A DEDICATED CIRCUIT WHICH CONSISTS OF A POWER CIRCUIT THAT FEEDS THIS TYPE OF EQUIPMENT ONLY WITH A SEPARATE GREEN GROUNDING CONDUCTOR CARRIED ALL THE WAY BACK TO THE PANEL TO BE CONNECTED TO THE GROUNDING SYSTEM.
- FUSES SHALL BE DUAL ELEMENT, TIME DELAY TYPE UNLESS OTHERWISE NOTED.
- EC SHALL VERIFY INTERIOR DECOR THEME TO BE USED AND COORDINATE WITH SAID THEME.
- EC SHALL INSTALL AND CONNECT WIRING TO ALL SIGNS.
- EC TO COORDINATE ROUGHING-IN TO ALL EQUIPMENT WITH EQUIPMENT SUPPLIER PRIOR TO INSTALLING CONDUITS.
- ALL CONDUIT RUNS TO KITCHEN EQUIPMENT SHALL BE RUN ABOVE CEILING.
- MAINTAIN 12" CLEARANCE BETWEEN P.O.S. COMMUNICATION CONDUITS AND LIGHTING FIXTURES AS WELL AS POWER CONDUITS.
- CUTTING AND NOTCHING OF 2x4 BEARING WALL FRAMING NOT TO EXCEED 7/8". BORING HOLES IN 2x4 BEARING WALL FRAMING NOT TO EXCEED 2 1/8".

ELECTRICAL CONTRACTOR (EC) - H.V.A.C.:

- THE EC SHALL FURNISH AND INSTALL TRICH FANS FOR POWER AND CONTROL WIRING AND TO MAINTAIN 12" MINIMUM CLEARANCE FROM BACK PANEL OF AIR CONDITIONING UNITS.
- EC SHALL INSTALL ALL LOW-VOLTAGE CONTROL WIRING FOR ALL AIR CONDITIONING UNITS AND FANS. COORDINATE AIR CONDITIONING AND ELECTRICAL PLANS.
- EC SHALL FURNISH AND INSTALL DISCONNECTS FOR AIR CONDITIONING UNITS.
- EC SHALL USE A MINIMUM OF 4-6" SEALTITE FLEXIBLE CONDUIT WHEN WIRING KITCHEN HOOD EXHAUST FANS ON ROOF SO THAT FANS MAY BE REMOVED FROM CURBS AND PLACED ON ROOF FOR CLEANING EXHAUST DUCTWORK.
- IF REQUIRED BY LOCAL CODE, EC SHALL PROVIDE COMPONENTS - AUDIBLE AND VISUAL ANNUNCIATORS AND SINGLE-GANG RECEPTACLES TEST STATIONS WITH GREEN AND RED LIGHT INDICATORS. EACH KITCHEN UNIT WILL BE EQUIPPED AND THE FIRE AND MECHANICAL INSPECTORS WILL DETERMINE SUITABLE LOCATION FOR TEST STATIONS. ANNUNCIATORS AND TEST STATION WILL BE LOOPED IN THE CIRCUITRY OF THE SMOKE DETECTION DEVICES. WIRING WILL BE SUPPLIED AND COMPLETED BY THE EC.

ELECTRICAL CONTRACTOR (EC) - KITCHEN EQUIPMENT:

- EC TO PROVIDE AND INSTALL RECEPTACLES, CAPS AND CORDS AS REQUIRED. CAPS AND CORDS ARE TO BE INSTALLED ACCORDING TO THE MANUFACTURER'S INSTRUCTIONS.
- EC TO CONNECT ELECTRICAL TO EQUIPMENT ACCORDING TO THE MANUFACTURER'S INSTRUCTIONS.
- EC TO RECONNECT ELECTRICAL CIRCUITS ON PRE-WIRED EQUIPMENT DISASSEMBLED FOR SHIPMENT.
- WHERE EQUIPMENT IS NOT PRE-WIRED, EC TO CONNECT THE ELECTRICAL SERVICE AND PROVIDE INTER-WIRING AS REQUIRED. WHERE RECEPTACLES ARE PROVIDED BY THE EQUIPMENT, EC TO PROVIDE AND INSTALL ELECTRICAL SERVICE DOWN FROM ABOVE THROUGH THE SERVICE CHASE PROVIDED WITH THE EQUIPMENT.
- KITCHEN EQUIPMENT SUPPLIER DRAWINGS INCLUDE ONLY THOSE RECEPTACLES REQUIRED FOR SPECIFIC KITCHEN EQUIPMENT. REFER TO THE ARCHITECT'S/ENGINEERS ELECTRICAL DRAWINGS FOR LOCATIONS OF UTILITY AND GENERAL PURPOSE RECEPTACLES.
- EC TO VERIFY THE UTILITY REQUIREMENTS FOR ITEMS NOT PROVIDED BY THE KITCHEN EQUIPMENT SUPPLIER.
- ALL PORTIONS OF WORK SHALL BE DONE IN ACCORDANCE WITH APPLICABLE LOCAL, STATE AND NATIONAL CODES, ORDINANCES AND STANDARDS.
- NOTIFY THE KITCHEN EQUIPMENT SUPPLIER PROJECT MANAGER IMMEDIATELY OF COMPLIANCE WITH A LOCAL, STATE OR NATIONAL CODE IS IN CONFLICT WITH THESE DRAWINGS.

ELECTRICAL CONTRACTOR (EC) - WALK-IN COOLER/FREEZER:

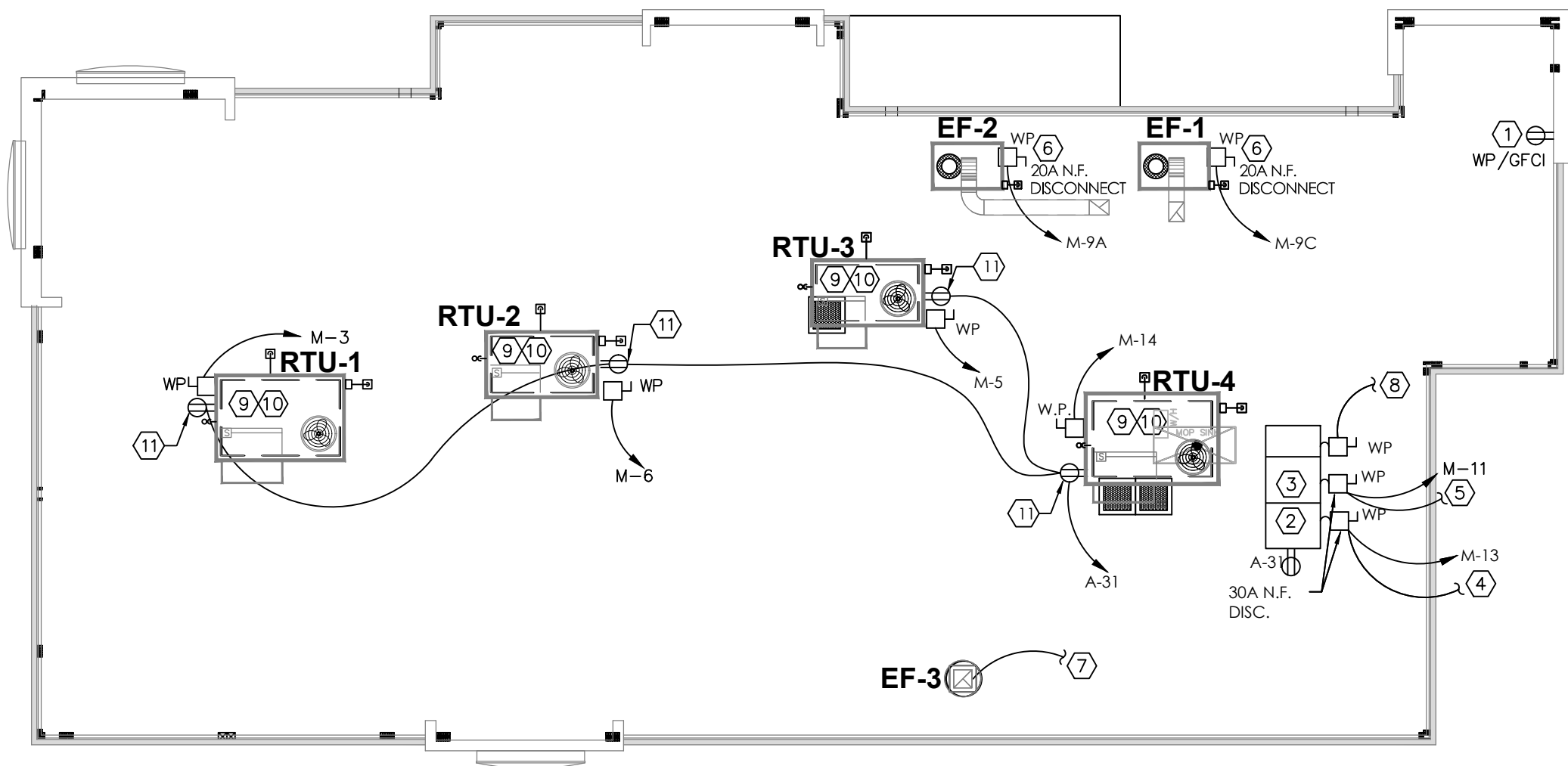
- EC TO PROVIDE AND INSTALL A HEATING ELEMENT ON THE COOLER AND FREEZER CONDENSATE DRAIN LINES.
- EC TO CONNECT THE PRIMARY ELECTRICAL SERVICE TO THE CONDENSING UNITS AND INTER-WIRE TO THE EVAPORATOR COIL(S), CONTROLS, LIGHTING FIXTURES AND DOOR PERIMETER HEATERS.

| DETAIL | DESCRIPTION |
|--------|--|
| ⏏ | TOGGLE SWITCH - SINGLE POLE HUBBELL #1221-1 |
| ⏏ | PUSHBUTTON SWITCH |
| ⏏ | SINGLE RECEPTACLE HUBBELL #5361-1 |
| ⏏ | DUPLEX RECEPTACLE HUBBELL #5362-1 |
| ⏏ | 208V RECEPTACLE HUBBELL 208V, 1Ø - #5352-1 208V, 3Ø - #8420 |
| ⏏ | TELEPHONE OUTLET WITH BUSHED HOLE COVERPLATE |
| ⏏ | JUNCTION OR GANG BOX |
| ⏏ | CABLE TELEVISION OUTLET |
| ⏏ | BUZZER / BELL |
| ⏏ | REAR DOOR ALARM |
| ⏏ | TRANSFORMER |

1 POWER PLAN SCALE: 1/4" = 1'-0"

KEYED NOTE - ROOF:

- OPTIONAL WEATHERPROOF OUTLET 30" A.F.F. FOR TV VIDEO CAMERA. RUN CONDUIT TO BLDG. INT., VERIFY SIZE AND LOCATION WITH OWNER.
- REMOTE FREEZER COMPRESSOR CONDENSING UNIT.
- REMOTE COOLER COMPRESSOR CONDENSING UNIT.
- TO FREEZER EVAPORATOR.
- TO COOLER EVAPORATOR.
- STUB-UP CONDUIT ADJ. TO ROOF CURB AND PROVIDE SEAL TIGHT CONNECTION TO DISCONNECT WITH SUFFICIENT SLACK TO ALLOW REMOVAL OF FAN FOR SERVICING.
- FOR CONTINUATION, SEE LIGHTING PLAN, SHEET E-1.
- DOWN TO ICE MACHINE.
- SEE ELECTRICAL RISER SHEET E-3 FOR ELECTRICAL REQUIREMENTS TO MECHANICAL EQUIPMENT
- RUN CONTROL WIRES VIA MASTER RELAY CONTROL PANEL. SEE SHEET E-5.
- 120V/1Ø WATER PROOF, GFCI RECEPTACLE BY ELECTRICAL CONTRACTOR.



2 ELECTRICAL ROOF POWER PLAN SCALE: 1/8" = 1'-0"

| Issued: | Date: |
|----------------|------------|
| A BKC Approval | 10/29/2021 |
| B Permit Set | 1/28/2022 |
| C Bid Set | 4/25/2022 |
| D | |
| E | |

| Revisions: | Date: |
|---------------|----------|
| 1 Addendum #1 | 02/08/22 |
| 2 Addendum #2 | 02/16/22 |
| 3 | |
| 4 | |
| 5 | |
| 6 | |
| 7 | |
| 8 | |
| 9 | |

| Seal | Seal |
|----------------------------|------|
| PROJECT ARCHITECT/ENGINEER | DATE |
| PROJECT LEAD | DATE |
| PROJECT DESIGNER | DATE |

Copyright © 2022
APD Engineering & Architecture, LLC
1150 Park Ave.
Suite 1150
Marietta, GA 30067

Drawing Alteration
It is a violation of law for any person, unless acting under the direction of licensed Architect, Professional Engineer, Landscape Architect, or Land Surveyor to alter any item on this document in any way. Any licensee who alters this document is required by law to affix his or her seal and to add the notation "Altered By" followed by his or her signature and the specific description of the alteration or revision.

DO NOT SCALE PLANS
Copying, Printing, Software and other processes required to produce these prints can stretch or shrink the actual paper or layout. Therefore, scaling of this drawing may be inaccurate. Contact APD E&A with any need for additional dimensions or clarifications.



Burger King Inc.
Store # 30011
108 Egg Harbor Road
Sewell, NJ 08080
Gloucester County
Project Name & Location:

| Power Plans | |
|-----------------|-------------|
| Drawing Name: | Project No. |
| Date: 11/8/2021 | 21-0458 |
| Type: BK ROC-60 | |
| Drawn By: MK | E-2 |
| Scale: As Noted | Drawing No. |