

MAIN BUS:		PANELBOARD SCHEDULE M										UTILITY AREA		LOCATION					
VOIAGE:		NEW-1 RECESSED										REFER TO ONE-LINE		SOURCE					
AIC:		REFER TO ONE-LINE										FEEDER							
QTY	AMP	F	WIRE	LOAD	LTO.	RECEP.	EQUIP.	OTHER	PH	OTHER	EQUIP.	RECEP.	LTO.	LOAD	WIRE	P	AMP	QTY	
1	200	3	#3/0	PANEL A	15747	3420	8922	1200											
3	50	3	#8	RTU-1				9420											
5	50	3	#8	RTU-3				9420		9420									
7	20	2	#8	EF-1				800											
9	20	2	#8	EF-2				1200											
15	1	#12																	
11	20	2	#12	WALK-IN BOX COOLER CONDENSER				930											
13	30	3	#10	WALK-IN BOX FREEZER CONDENSER				9072											
LOAD TOTALS: VA														VA LOAD TOTALS					

SUB-TOTAL	DEMAND FACTOR	TOTAL LOAD
LIGHTING LOAD:	15,747	x 1.25 19,684
RECEPTACLE LOAD (FIRST 10KW):	10,000	x 1.0 10,000
RECEPTACLE LOAD (REMAINING):	6,617	x 0.50 3,309
OTHER LOAD:	52,292	x 1.0 52,292
EQUIPMENT LOAD:	100,145	x 1.0 100,145
LARGEST MOTOR LOAD:	9,072	x 0.25 2,268
TOTALS WITH NEC FACTORS: VA	184,791	187,687
PANELBOARD VOLTAGE / AMPERAGE	208	116

MAIN BUS:		PANELBOARD SCHEDULE B										UTILITY AREA		LOCATION					
VOIAGE:		NEW-1 RECESSED										REFER TO ONE-LINE		SOURCE					
AIC:		REFER TO ONE-LINE										FEEDER							
QTY	AMP	F	WIRE	LOAD	LTO.	RECEP.	EQUIP.	OTHER	PH	OTHER	EQUIP.	RECEP.	LTO.	LOAD	WIRE	P	AMP	QTY	
1	20	1	#12	SELF-SERVE DRINK DISPENSER				2070											
3	20	1	#12	P.O.S. RECEPTACLE				1320											
5	20	1	#12	P.O.S. RECEPTACLE				1320											
7	20	1	#12	DRIVE THRU DRINK DISPENSER				2070											
9	20	1	#12	BEAR DOOR BUZZER				720											
11	20	1	#12	DOOR ALARM				720											
13	20	1	#12	WATER HEATER				180											
15	20	1	#12	DRIVE THRU DRINK DISPENSER				2070											
17	20	3	#20	SHAKE/CRUSH SERVER (5LFT)				3120											
19	20	1	#12	COFFEE/TEA BREW ER				3640											
21	20	1	#12	SHORTENING STORAGE UNIT				500											
23	20	1	#12	WATER BOOSTER				1428											
25	20	1	#12	FRY HOOD				1380											
31	20	1		SPARE															
33	30	3	#8	TRASH COMPACTOR				3058											
35	20	1		SPARE															
37	20	1		SPARE															
39	20	1		SPARE															
41	20	1		SPARE															
43	20	1	#10	SMOKEHOLD CABINET/REFRIG.				1450											
45	20	1		SPARE															
47	20	1		SPARE															
49	20	1		SPARE															
51	20	1		SPARE															
53	20	1		SPARE															
LOAD TOTALS: VA														VA LOAD TOTALS					

SUB-TOTAL	DEMAND FACTOR	TOTAL LOAD
LIGHTING LOAD:	0	x 1.25 0
RECEPTACLE LOAD (FIRST 10KW):	9,357	x 1.0 9,357
RECEPTACLE LOAD (REMAINING):	0	x 0.50 0
OTHER LOAD:	0	x 1.0 0
EQUIPMENT LOAD:	37,882	x 1.0 37,882
LARGEST MOTOR LOAD:	0	x 0.25 0
TOTALS WITH NEC FACTORS: VA	47,239	47,239
PANELBOARD VOLTAGE / AMPERAGE	208	131

MAIN BUS:		PANELBOARD SCHEDULE A										UTILITY AREA		LOCATION					
VOIAGE:		NEW-1 RECESSED										REFER TO ONE-LINE		SOURCE					
AIC:		REFER TO ONE-LINE										FEEDER							
QTY	AMP	F	WIRE	LOAD	LTO.	RECEP.	EQUIP.	OTHER	PH	OTHER	EQUIP.	RECEP.	LTO.	LOAD	WIRE	P	AMP	QTY	
1	20	2	#8	AREA LIGHTS				325											
3	20	1	#10	FLAO-POLE LIGHTS				1200											
5	20	1	#10	FLAO-POLE LIGHTS				1200											
7	20	1	#8	PIC/ON SIGN				720											
11	20	1	#10	CHANNEL LETTER / LOGO				1200											
13	20	1	#10	DRIVE THRU MENU - LANE 2				720											
15	20	1	#10	CLEARANCE BARS				600											
17	20	1	#10	MOTION LIGHT - TRASH COMPACTOR				27											
19	20	1	#12	CHANNEL LETTER / LOGO				1200											
21	20	1	#10	PARADE LIGHT BAND				240											
23	20	1	#12	CHANNEL LETTER / LOGO				1200											
25	20	1	#10	DRIVE THRU MENU - LANE 1				720											
27	20	1	#10	EXTERIOR CANOPY LIGHTS				1475											
29	20	1	#12	DOOR / FREEZER LIGHTS / DOORHTR. / IHE				400											
31	20	1	#12	EXTERIOR RECEPTACLES				720											
33	20	1	#12	SERVICE COUNTER / CORRIDOR				360											
35	20	1	#12	DOT SPEED / SERVICE CAMERA				540											
37	20	1	#12	KITCHEN AREA LIGHTS				1200											
39	20	1	#12	CREW / STORAGE RECEPTACLES				720											
41	20	1	#12	CHANNEL LETTER / LOGO				1200											
LOAD TOTALS: VA														VA LOAD TOTALS					

SUB-TOTAL	DEMAND FACTOR	TOTAL LOAD
LIGHTING LOAD:	15,747	x 1.25 19,684
RECEPTACLE LOAD (FIRST 10KW):	3,420	x 1.0 3,420
RECEPTACLE LOAD (REMAINING):	0	x 0.50 0
OTHER LOAD:	1,200	x 1.0 1,200
EQUIPMENT LOAD:	8,922	x 1.0 8,922
LARGEST MOTOR LOAD:	2,222	x 0.25 556
TOTALS WITH NEC FACTORS: VA	29,289	33,781
PANELBOARD VOLTAGE / AMPERAGE	208	94

MAIN BUS:		PANELBOARD SCHEDULE D										UTILITY AREA		LOCATION					
VOIAGE:		NEW-1 RECESSED										REFER TO ONE-LINE		SOURCE					
AIC:		REFER TO ONE-LINE										FEEDER							
QTY	AMP	F	WIRE	LOAD	LTO.	RECEP.	EQUIP.	OTHER	PH	OTHER	EQUIP.	RECEP.	LTO.	LOAD	WIRE	P	AMP	QTY	
1	20	2	#12	PHU / MICROW AVE				3840											
3	20	2	#12	PHU / MICROW AVE				3840											
7	20	2	#12	PHU / MICROW AVE				3840											
9	20	2	#12	CONVEYOR/TOASTER				3840											
11	20	2	#12	EGG COOKER				3840											
13	30	2	#10	VERTICAL TOASTER				5760											
17	20	1	#12	HEATED SURFACES				240											
19	20	1	#12	UTILITY				1920											
21								1061											
23								1920											
LOAD TOTALS: VA														VA LOAD TOTALS					

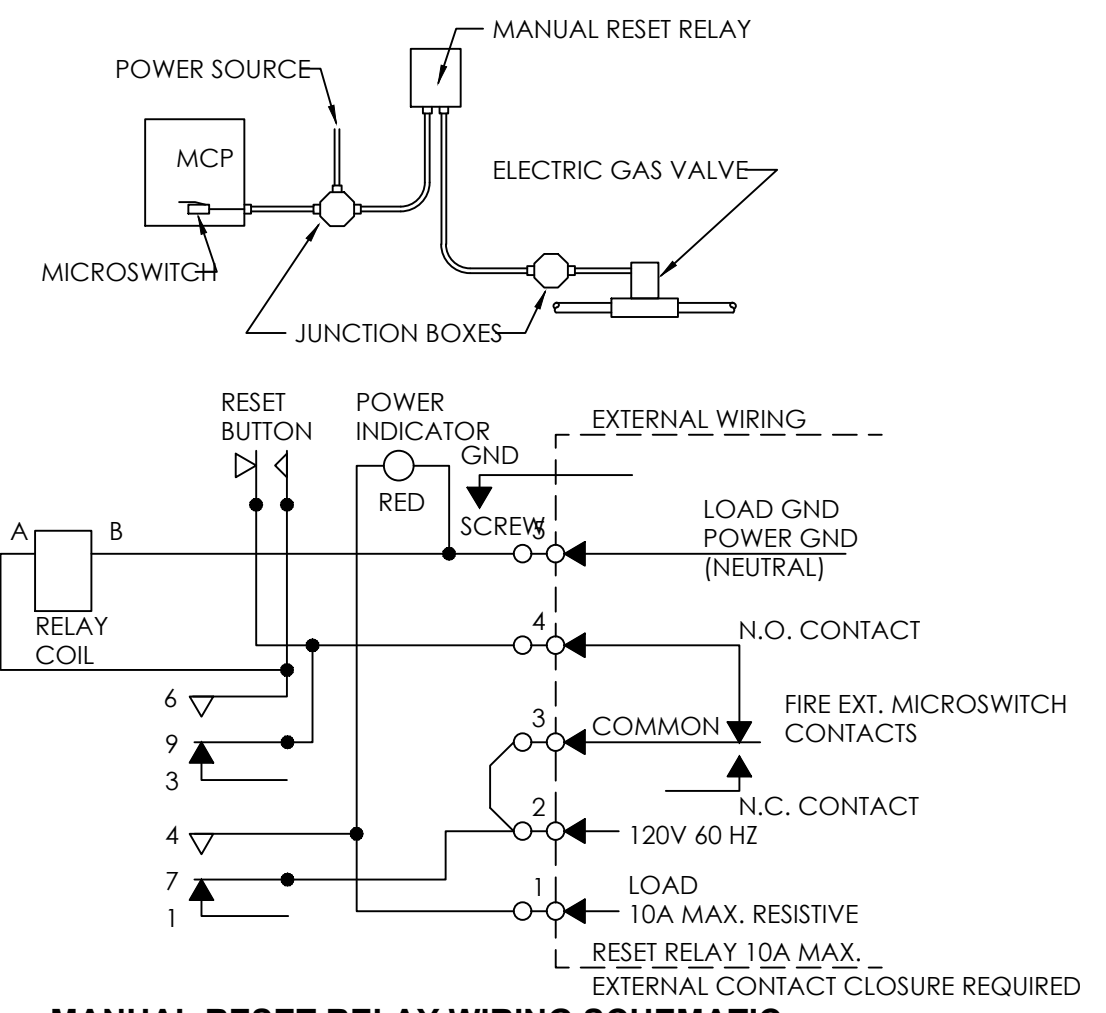
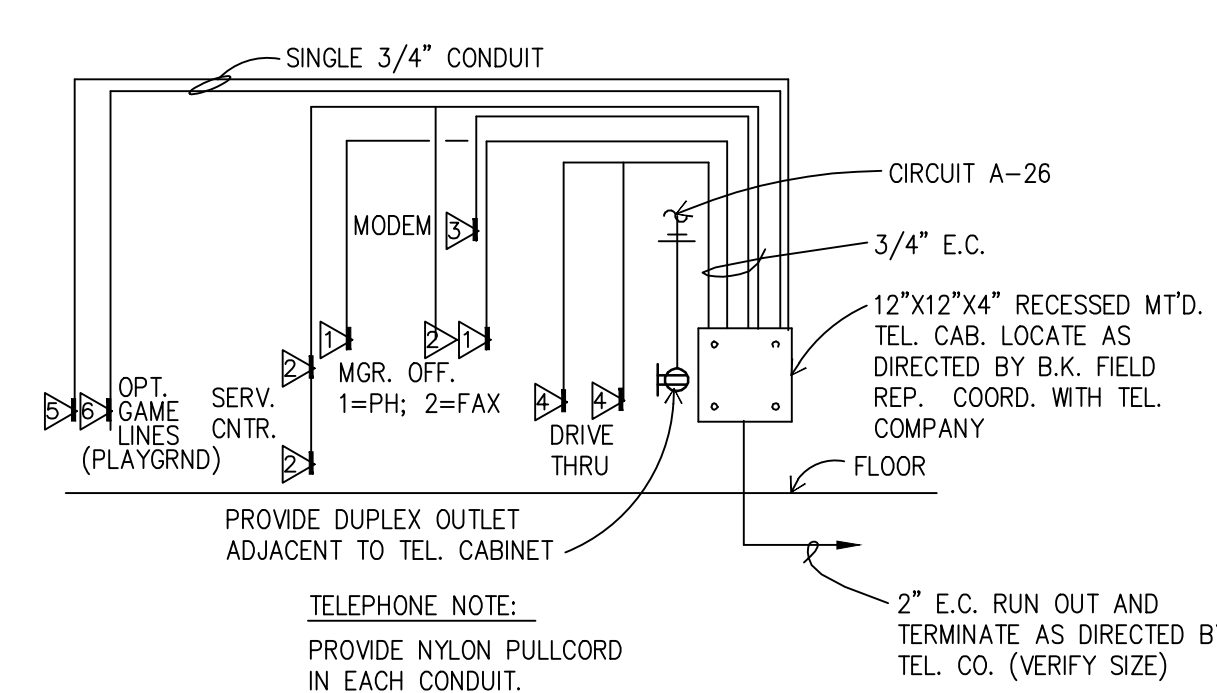
SUB-TOTAL	DEMAND FACTOR	TOTAL LOAD
LIGHTING LOAD:	0	x 1.25 0
RECEPTACLE LOAD (FIRST 10KW):	3,840	x 1.0 3,840
RECEPTACLE LOAD (REMAINING):	0	x 0.50 0
OTHER LOAD:	0	x 1.0 0
EQUIPMENT LOAD:	37,781	x 1.0 37,781
LARGEST MOTOR LOAD:	0	x 0.25 0
TOTALS WITH NEC FACTORS: VA	41,621	41,621
PANELBOARD VOLTAGE / AMPERAGE	208	116

PANELBOARD NOTES:

1. WIRE THROUGH CONTACTOR
2. HACR TYPE BREAKER
3. LOCKED BREAKER

CIRCUIT BREAKER SYMBOL DESCRIPTIONS:

TC WIRE THROUGH CONTACTOR
HACR HACR TYPE BREAKER
LO LOCKED BREAKER
GFCI GROUND FAULT CIRCUIT INTERRUPTOR
IG WIRE SEPARATE TO ISOLATED GROUND BUS



RISER NOTES:

1. ALL FUSED DISCONNECT SWITCHES TO BE PROVIDED BY CONTRACTOR.
2. REFER TO PANEL NOTES.
3. REFER TO GENERAL NOTES, SHEET E-2.
4. "T.C." INDICATES TIME CLOCK (OR TIME SWITCH)
5. SEE MASTER CONTACTOR PANEL WIRING DIAGRAM FOR ADDITIONAL CIRCUITS FROM PANELS THAT ARE CONTROLLED THROUGH THE MASTER CONTACTOR PANEL.
6. PROVIDE AN ISOLATED GROUND BUS IN PANEL & RUN CIRCUIT GROUND WIRE TO THIS BUS. RUN A #6 GREEN GROUND FROM THIS BUS TO MAIN SERVICE GROUND POINT.
7. MASTER CONTACTOR PANEL AND MANUAL ON-OFF PANEL TO BE INCLUDED IN ELECTRICAL CONTRACTORS SCOPE OF WORK.

ELECTRICAL DISTRIBUTION PANELS, MASTER CONTACTOR PANEL AND MANUAL ON/OFF PANEL MAY BE PURCHASED AS A LOOSE GEAR PACKAGE THROUGH:

SUNCOAST ENVIRONMENTAL CONTROLS, INC.
8564 115TH AVENUE NORTH
LARGO, FLORIDA 34643
PHONE (877) 544-6679