

BK ROC HOOD/EX FAN/FIRE SYSTEM/HVAC CONTROL MATRIX

ACTION	EX FAN	ELECTRIC PWR TO COOKING EQUIP.	MECH. GAS VALVE	HVAC UNIST	MAKE UP AIR UNIT (IF APPLICABLE)	COMMENTS
FAN SW. TURNED ON	ON	ON	ON	ON	ON	NOTE: HVAC UNITS MUST BE ON BEFORE EX FAN CAN COME ON
FAN SW. TURNED OFF	OFF	OFF	ON	ON	OFF	
FIRE SYSTEM DISCHARGES	ON	OFF	OFF	OFF	OFF	
SLIPPING FAN BELT	ON	OFF	ON	ON	OFF	PWR TO COOKING EQUIP. OFF VIA CURRENT SENSOR
BROKEN FAN BELT	ON	OFF	ON	ON	OFF	PWR TO COOKING EQUIP. OFF VIA CURRENT SENSOR
POWER OUTAGE	OFF	OFF	ON	OFF	OFF	
HVAC SYSTEM TURNED OFF	OFF	OFF	ON	OFF	OFF	

H&K International	05/17/2016	mm [in]	REV	REVISION	DATE
Rto	A	15 OF 19			

H&K INTERNATIONAL
2200 SKYLINE DRIVE
MESQUITE, TEXAS 75149
1-800-788-2445 1-214-818-3500

FOR COMMERCIAL AND INSTITUTIONAL KITCHEN EQUIPMENT
UL710, STANDARD FOR EXHAUST HOODS FOR COMMERCIAL COOKING EQUIPMENT, 6TH EDITION
CANULC-S646-10, STANDARD FOR EXHAUST HOODS AND RELATED CONTROLS, 3RD EDITION, JULY 2010
SUITABLE FOR USE WITH APPLIANCES WITH MEDIUM-DUTY RATING UP TO 400°F

MODEL NUMBER: 52440-1, HOOD LENGTH 6 FT. 4 IN.
FRYER HOOD

115VAC/60HZ, SINGLE PHASE, LESS THAN 12 AMPS

SERIAL NUMBER 5371116-005

MANUFACTURING I.D. HKD

MANUFACTURE DATE 06/01/15

SPACING BETWEEN LOWER EDGE OF THE HOOD AND COOKING SURFACE:
MAXIMUM: 40 IN (1016mm)
MINIMUM: 8 IN (203mm)
MINIMUM OVERHANG TO THE COOKING SURFACE:
SIDE: 1-1/2 IN (38mm) FRONT: 0 IN (mm)

MINIMUM EXHAUST AIRFLOW: 150 CFM/FT / TOTAL 950 CFM (13.9 CU M/MIN / TOTAL 26.9 CU M/MIN)

BAFFLE-TYPE FILTERS MUST BE IN PLACE. FLAMEGUARD, MODELS 202020 (X3) AND 202016 (X1), UL FILE #R10173 / COPPER CONDUCTORS ONLY / MAXIMUM LIGHT BULB WATTAGE 100W / CLEARANCE TO COMBUSTIBLES 18" (457 mm)

H&K INTERNATIONAL
2200 SKYLINE DRIVE
MESQUITE, TEXAS 75149
1-800-788-2445 1-214-818-3500

POUR ÉQUIPEMENT COMMERCIAL ET INSTITUTIONNEL
UL710, NORME POUR SORBONNES EQUIPMENT DE CUISSON COMMERCIAL, 6E EDITION
CANULC-S646-10, NORME POUR HOTTES ET LES CONTROLES CONNEXES, 3EME EDITION, JUILLET 2010

NO. DE MODELE 52440-1, HOTTE POUR FRITUSE DE 6'-4"

115VAC/60HZ, MONOPHASE, MOINS DE 12 AMPERES

NO. DE SERIE 5371116-005

NO. DE FABRICATION HKD

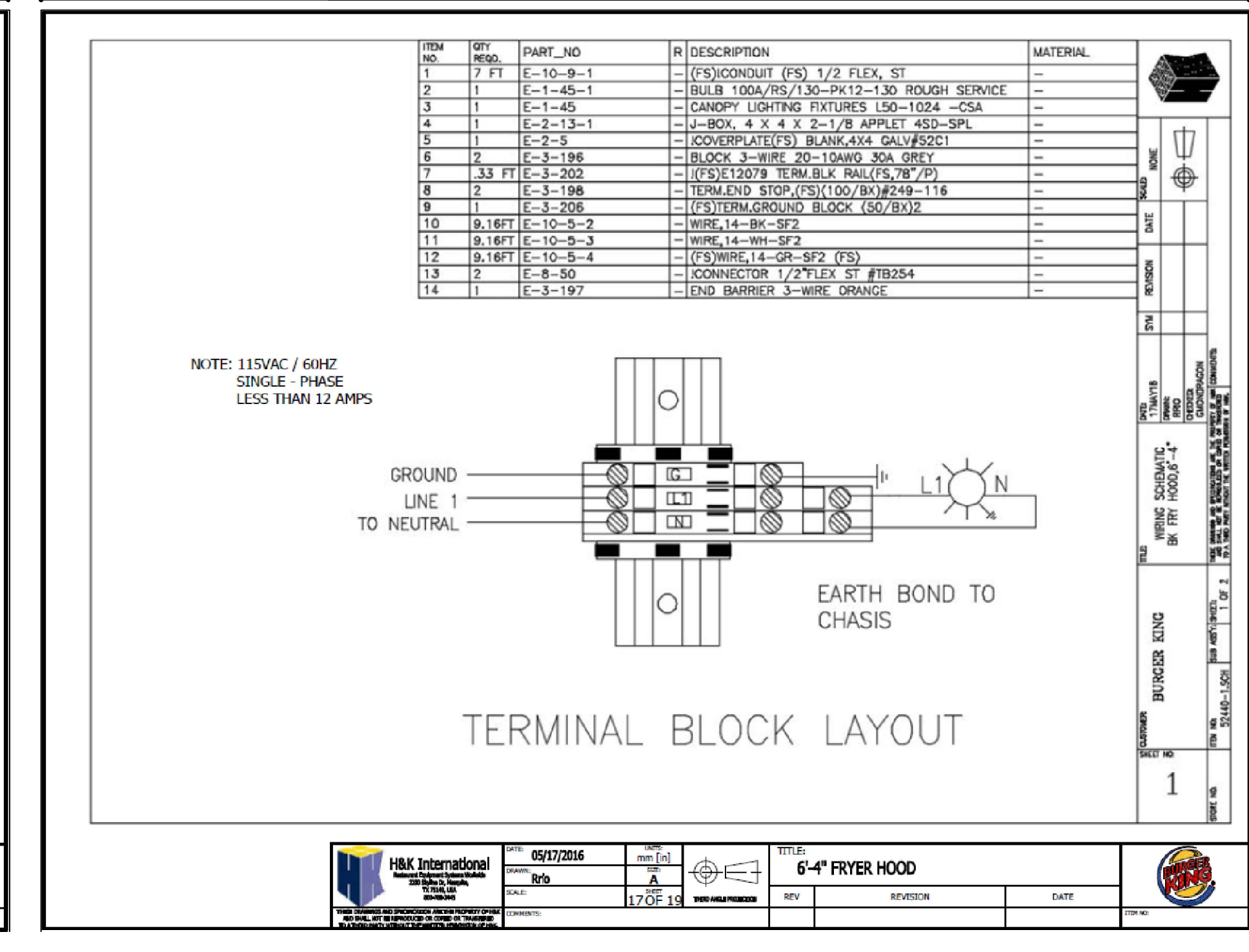
DATE DE FABRICATION 06/01/15

DISTANCE ENTRE LA SURFACE DE CUISSON ET LA PARTIE INFÉRIEURE DE LA HOTTE:
MAXIMUM: 40 IN (1016mm)
MINIMUM: 8 IN (203mm)
SURPLOMB MINIMUM A LA SURFACE DE CUISSON:
COTE: 1-1/2 IN (38mm) DEVANT: 0 IN (mm)

DEBIT D'AIR MINIMUM: 150 CFM/FT / TOTAL 950 CFM (13.9 CU M/MIN / TOTAL 26.9 CU M/MIN)

BAFFLE FILTRES OBLIGATOIRES EN PLACE. FLAMEGUARD, MODELE 202020 (X3) ET 202016 (X1). UL FILE #R10173 / UTILISEZ QUE DES CONDUCTEURS EN CUIVRE / MAXIMUM AMBOLLE PUISSANCE 100W / LIQUIDATION DE COMBUSTIBLES 18" (457mm)

H&K International	05/17/2016	mm [in]	REV	REVISION	DATE
Rto	A	16 OF 19			



HVAC SYSTEM

N-C-A

NATIONAL CORPORATE ACCOUNT SERVICES, INC.

DESIGNING SHOWN ARE FOR PRELIMINARY CONSIDERATIONS ONLY. SITE-SPECIFIC DESIGN IS REQUIRED BY BURGER KING CORPORATION AS A COURTESY. NCA CONSULTANTS PROVIDES SITE-SPECIFIC DESIGN WITH SITE-SPECIFIC PROFESSIONAL ENGINEER SEAL UNDER AN AGREEMENT BETWEEN NCA CONSULTANTS AND BURGER KING CORPORATION.

FOR SITE-SPECIFIC DESIGN, ARCHITECTS EMAIL REFLECTED CEILING PLAN, ELEVATIONS, KITCHEN PLANS, FLOOR PLAN, SITE PLAN, EXTERIOR ELEVATIONS, AND ROOF STRUCTURAL PLAN TO DESIGN@NCACONSULTANTS.COM

TO CONTACT THE NCA CONSULTANTS BY PHONE, CALL TOLL-FREE (877) 530-0076.

NOT FOR CONSTRUCTION

© Copyright 2022-- Drawings, specifications, notes, database, computer files, field data, and reports as instruments of service prepared by the Design of Record. As instruments of service, these items remain the property of the Design of Record, who shall retain all statutory and other reserved rights, including the copyright thereto. Any use, reproduction or changes to these documents without written consent of NCA Consultants is a violation of federal copyright laws.

H&K International	05/17/2016	mm [in]	REV	REVISION	DATE
Rto	A	18 OF 19			

Issued: _____ Date: _____

A	BKC Approval	10/29/2021
B	Permit Set	1/28/2022
C	Bid Set	4/25/2022
D		
E		

Revisions: _____ Date: _____

1		
2		
3		
4		
5		
6		
7		
8		
9		

Seal _____ Seal _____
PROJECT ARCHITECT/ENGINEER DATE

PROJECT LEAD _____ DATE

PROJECT DESIGNER _____ DATE

Copyright © 2022
APD Engineering & Architecture, LLC
1150 Marietta, GA 30067

Drawing Alteration

It is a violation of law for any person, unless acting under the direction of licensed Architect, Professional Engineer, Landscape Architect, or Land Surveyor to alter any item on this document in any way. Any licensee who alters this document is required by law to affix his or her seal and to add the notation "Altered By" followed by his or her signature and the specific description of the alteration or revision.

DO NOT SCALE PLANS

Copying, Printing, Software and other processes required to produce these prints can stretch or shrink the actual paper or layout. Therefore, scaling of this drawing may be inaccurate. Contact APD E&A with any need for additional dimensions or clarifications.

APD
ENGINEERING
ARCHITECTURE
615 Fishers Run Victor, NY 14564
585.742.2222 - www.apd.com

Ampler Restaurant Group
c/o Quatro Business Support Services
1850 Parkway Place
Suite 1150
Marietta, GA 30067

Burger King Inc.
Store # 30011
108 Egg Harbor Road
Sewell, NJ 08080
Gloucester County

Project Name & Location:

FRYER
HOOD DRAWINGS
Drawing Name:

Project No.
21-0458

Date: 11/8/2021

Type: BK ROC-60

Drawn By: SR M-7

Scale: As Noted

Drawing No.