

BK ROC HOOD/EX FAN/FIRE SYSTEM/HVAC CONTROL MATRIX

ACTION	EX FAN	ELECTRIC PWR TO COOKING EQUIP.	MECH. GAS VALVE	HVAC UNIST	MAKE UP AIR UNIT (IF APPLICABLE)	COMMENTS
FAN SW. TURNED ON	ON	ON	ON	ON	ON	NOTE: HVAC UNITS MUST BE ON BEFORE EX FAN CAN COME ON
FAN SW. TURNED OFF	OFF	OFF	ON	ON	OFF	
FIRE SYSTEM DISCHARGES	ON	OFF	OFF	OFF	OFF	
SLIPPING FAN BELT	ON	OFF	ON	ON	OFF	PWR TO COOKING EQUIP. OFF VIA CURRENT SENSOR
BROKEN FAN BELT	ON	OFF	ON	ON	OFF	PWR TO COOKING EQUIP. OFF VIA CURRENT SENSOR
POWER OUTAGE	OFF	OFF	ON	OFF	OFF	
HVAC SYSTEM TURNED OFF	OFF	OFF	ON	OFF	OFF	

H&K International	DATE: 5/23/2016	REV: A	TITLE: 7-7" BROILER/OVEN HOOD ROC STORES
DATE: Rtb	DATE: 15 0 18F	REV: A	REVISION: DATE: 7/18/2017
COMMENTS:		REV: A	DATE: 20171223 CC

H&K INTERNATIONAL
2200 SKYLINE DRIVE MESQUITE, TEXAS 75149
MH16346
1-800-788-2445 1-214-818-3500

FOR COMMERCIAL AND INSTITUTIONAL COOKING EQUIPMENT

UL710, STANDARD FOR EXHAUST HOOD FOR COMMERCIAL EQUIPMENT, 6TH EDITION CANULC-S646-10, STANDARD FOR EXHAUST HOODS AND RELATED CONTROLS, 3RD EDITION, JULY 2010

MODEL NUMBER: 52415-1, HOOD LENGTH 7 FT - 7 IN. USED ON BROILER/OVEN

SERIAL NUMBER: 5371116-007
MANUFACTURING I.D. HKD
MANUFACTURE DATE: 06/03/15

SPACING BETWEEN LOWER EDGE OF THE HOOD AND APPLIANCE HOUSING (MAXIMUM, MINIMUM) / OVERHANG TO APPLIANCE HOUSING (SIDE, FRONT)

BROILER (RATED UP TO 100 KBTU/HR):
MAXIMUM: 17 IN (432mm) SIDE: 12 IN (305mm)
MINIMUM: 3 IN (76mm) FRONT: 6 IN (153mm)

OVEN (RATED UP TO 8 KW):
MAXIMUM: 18 IN (457mm) SIDE: 1-1/2 IN (38mm)
MINIMUM: 6 IN (153mm) FRONT: 3 IN (77mm)

MINIMUM EXHAUST AIRFLOW: 145 CFM/FT / TOTAL 1100 CFM (13.6 CU MM/IN / TOTAL 31.1 CU MM/IN)

FILTERS MUST BE IN PLACE. FLAMEGUARD, MODELS 202020 (X2) AND 202016 (X3), UL FILE #R10173
CLEARANCE TO COMBUSTIBLES 18" (457mm)

H&K INTERNATIONAL
2200 SKYLINE DRIVE MESQUITE, TEXAS 75149
MH16346
1-800-788-2445 1-214-818-3500

POUR EQUIPEMENT COMMERCIAL ET INSTITUTIONNEL

UL710, NORME POUR SORBONNES EQUIPEMENT DE CUISSON COMMERCIAL, 6TH EDITION CANULC-S646-10, NORME POUR HOTTES ET LES CONTROLES CONNEXES, 3EME EDITION, JUILLET 2010

No. DE MODELE: 52415-1, HOOD LENGTH 7 FT - 7 IN. UTILISES SUR CHAIR / FOUR

NO. DE SERIE: 5371116-007
NO DE FABRICATION: HKD
DATE DE FABRICATION: 06/03/15

ESPACEMENT ENTRE LE BORD INFÉRIEUR DE LA HOTTE ET L'APPAREIL LOGÉMENT (MAXIMUM, MINIMUM) / FAUX DE L'APPAREIL LOGÉMENT (CÔTÉ, DEVANT)

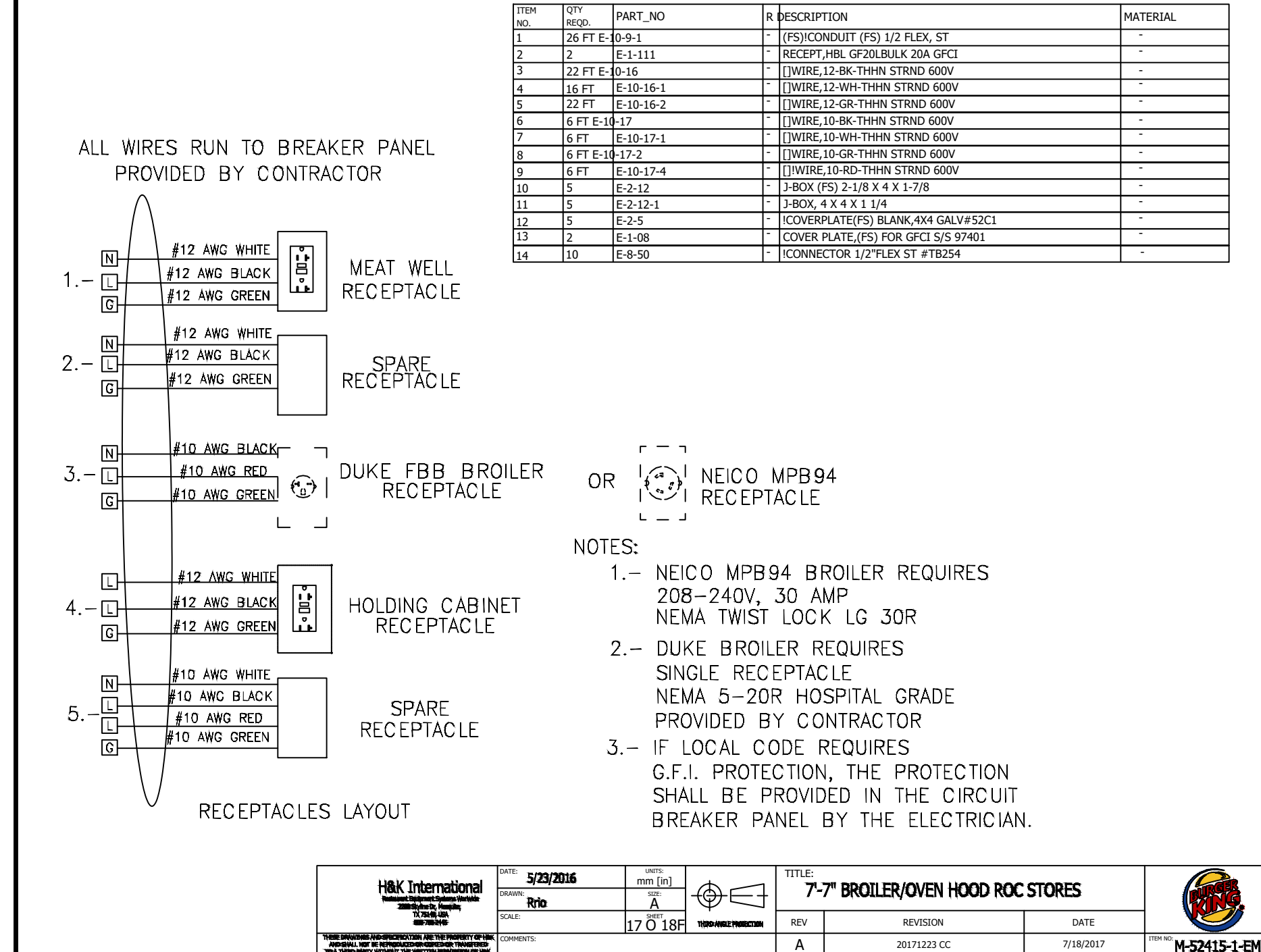
CHAIR (NOMINAL 100 KBTU/HR):
MAXIMUM: 17 IN (432mm) CÔTÉ: 12 IN (305mm)
MINIMUM: 3 IN (76mm) DEVANT: 6 IN (153mm)

FOUR (NOMINAL 8 KW):
MAXIMUM: 18 IN (457mm) CÔTÉ: 1-1/2 IN (38mm)
MINIMUM: 6 IN (153mm) DEVANT: 3 IN (77mm)

DEBT D'AIR MINIMUM: 145 CFM/FT / TOTAL 1100 CFM (13.6 CU MM/IN / TOTAL 31.1 CU MM/IN)

FILTRES OBLIGATOIRES EN PLACE. FLAMEGUARD, MODELE 202020 (X2) AND 202016 (X3), UL FILE #R10173
LIQUIDATION DE COMBUSTIBLES 18" (457mm)

H&K International	DATE: 5/23/2016	REV: A	TITLE: 7-7" BROILER/OVEN HOOD ROC STORES
DATE: Rtb	DATE: 16 0 18F	REV: A	REVISION: DATE: 7/18/2017
COMMENTS:		REV: A	DATE: 20171223 CC



HVAC SYSTEM

N - C - A
CONSULTANTS / GROUP

NATIONAL CORPORATE ACCOUNT SERVICES, INC.

DRAWINGS SHOWN ARE FOR PROTOTYPICAL CONSIDERATIONS ONLY. SITE-SPECIFIC DESIGN IS REQUIRED BY BURGER KING CORPORATION. AS A COURTESY, NCA CONSULTANTS PROVIDES SITE-SPECIFIC DESIGN WITH SITE-SPECIFIC PROFESSIONAL ENGINEER SEAL UNDER AN AGREEMENT BETWEEN NCA CONSULTANTS AND BURGER KING CORPORATION.

FOR SITE-SPECIFIC DESIGN, ARCHITECTS EMAIL REFLECTED CEILING PLAN, ELEVATIONS, KITCHEN PLANS, FLOOR PLAN, SITE PLAN, EXTERIOR ELEVATIONS, AND ROOF STRUCTURAL PLAN TO DESIGN@NCACONSULTANTS.COM

TO CONTACT THE NCA CONSULTANTS BY PHONE, CALL TOLL-FREE (877) 530-0078.

DATE: 10-12-18
DESCRIPTION: USE ONLY
BY: KAM
NOT FOR CONSTRUCTION

© Copyright 2022- Drawings, specifications, notes, database, computer files, field data, and reports as instruments of service prepared by the Design of Record. As instruments of services, these items remain the property of the Design of Record, who shall retain all statutory and other reserved rights, including the copyright thereto. Any use, reproduction or changes to these documents without written consent of NCA Consultants is a violation of federal copyright laws.

Issued: _____ Date: _____

A	BKC Approval	10/29/2021
B	Permit Set	1/28/2022
C	Bid Set	4/25/2022
D		
E		

Revisions: _____ Date: _____

1		
2		
3		
4		
5		
6		
7		
8		
9		

Seal _____ Seal _____ DATE _____

PROJECT ARCHITECT/ENGINEER _____ DATE _____

PROJECT LEAD _____ DATE _____

PROJECT DESIGNER _____ DATE _____

Copyright © 2022
APD Engineering & Architecture, LLC
1150 S. W. 11th St., Suite 1150
Victor, NY 14564
585.742.2222 - www.apd.com

Drawing Alteration

If a violation of law for any person, unless acting under the direction of licensed Architect, Professional Engineer, Landscape Architect, or Land Surveyor to alter this document is required by law to affix his or her seal and to add the notation "Altered By" followed by his or her signature and the specific description of the alteration or revision.

DO NOT SCALE PLANS

Copying, Printing, Software and other processes required to produce these prints can stretch or shrink the actual paper or layout. Therefore, scaling of this drawing may be inaccurate. Contact APD EAA with any need for additional dimensions or clarifications.

APD
ENGINEERING
ARCHITECTURE

615 Fishers Run Victor, NY 14564
585.742.2222 - www.apd.com

Amplifier Restaurant Group
c/o Quattro Business Support Services
1850 Parkway Place
Suite 1150
Marietta, GA 30067

Burger King Inc.
Store # 30011
108 Egg Harbor Road
Sewell, NJ 08080
Gloucester County

Project Name & Location:

BROILER- OVEN
HOOD DRAWINGS

Drawing Name: _____

Project No. _____

Date: 11/8/2021

Type: BK ROC-60

Drawn By: SR

Scale: As Noted

21-0458

M-4

Drawing No. _____