

**NCA**  
CONSULTANTS / GROUP  
NATIONAL CORPORATE ACCOUNT SERVICES, INC.

DRAWINGS SHOWN ARE FOR PROTOTYPICAL CONSIDERATIONS ONLY. SITE-SPECIFIC DESIGN IS REQUIRED BY BURGER KING CORPORATION. AS A COURTESY, NCA CONSULTANTS PROVIDES SITE-SPECIFIC DESIGN WITH SITE-SPECIFIC PROFESSIONAL ENGINEER SEAL UNDER AN AGREEMENT BETWEEN NCA CONSULTANTS AND BURGER KING CORPORATION.

FOR SITE-SPECIFIC DESIGN, ARCHITECTS EMAIL REFLECTED CEILING PLAN, ELEVATIONS, KITCHEN PLANS, FLOOR PLAN, SITE PLAN, EXTERIOR ELEVATIONS, AND ROOF STRUCTURAL PLAN TO DESIGN@NCACONSULTANTS.COM

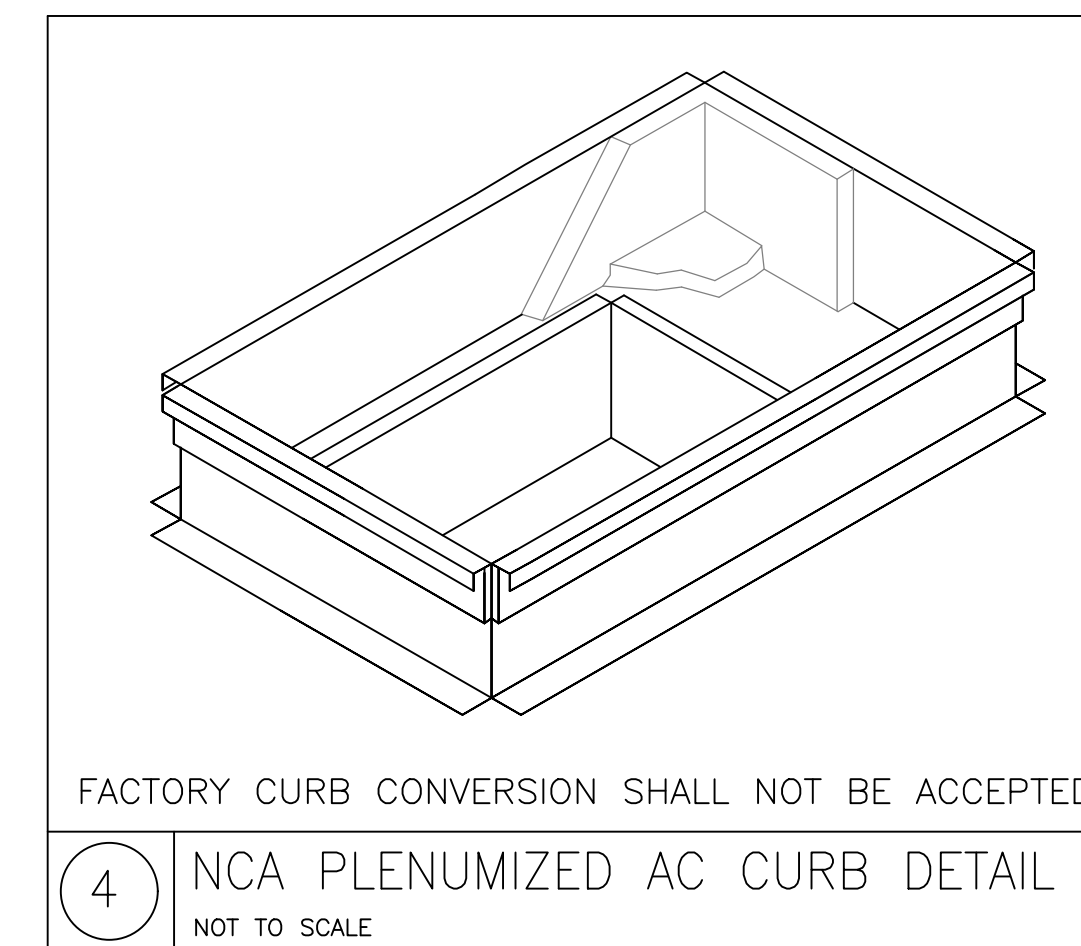
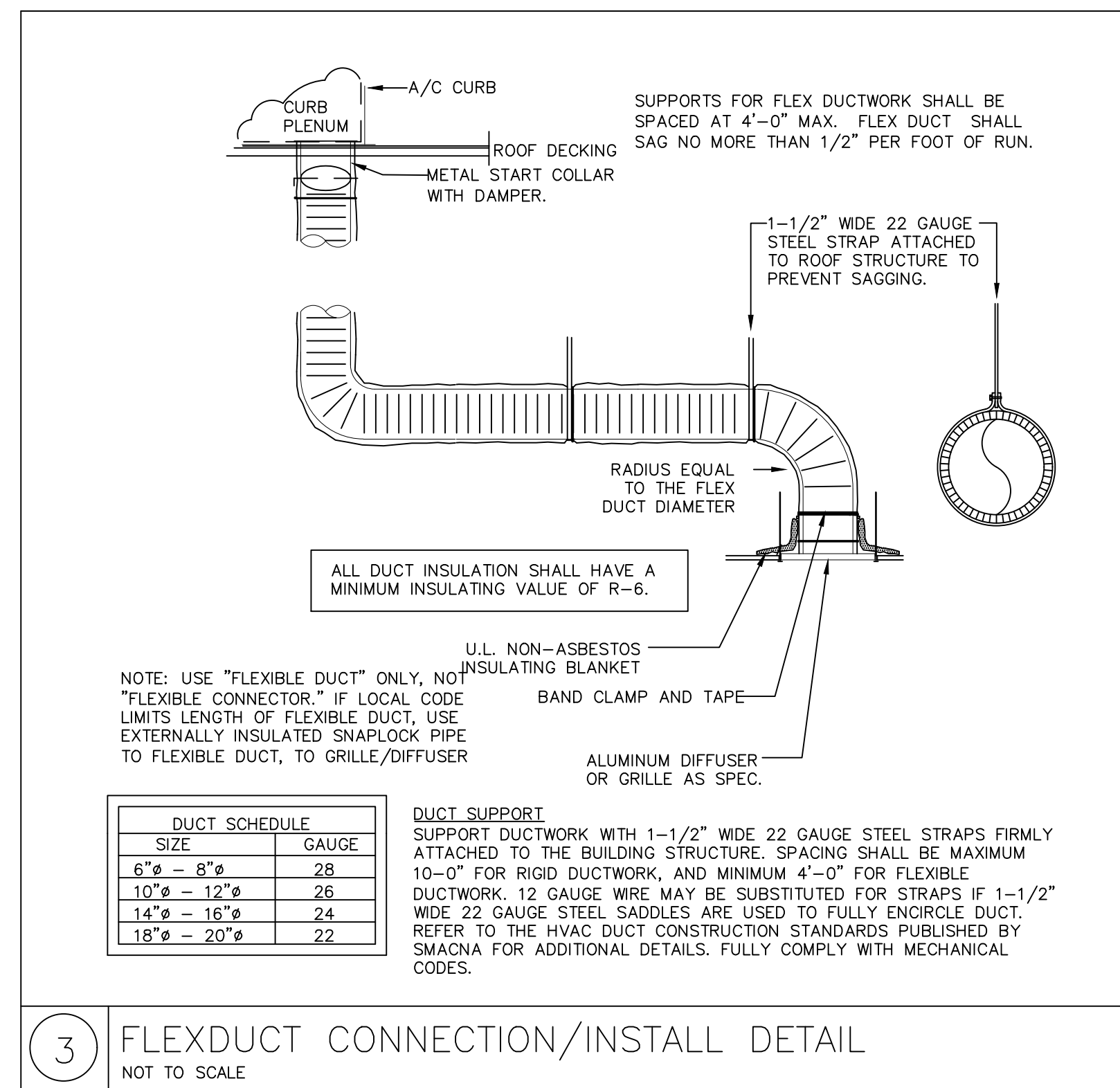
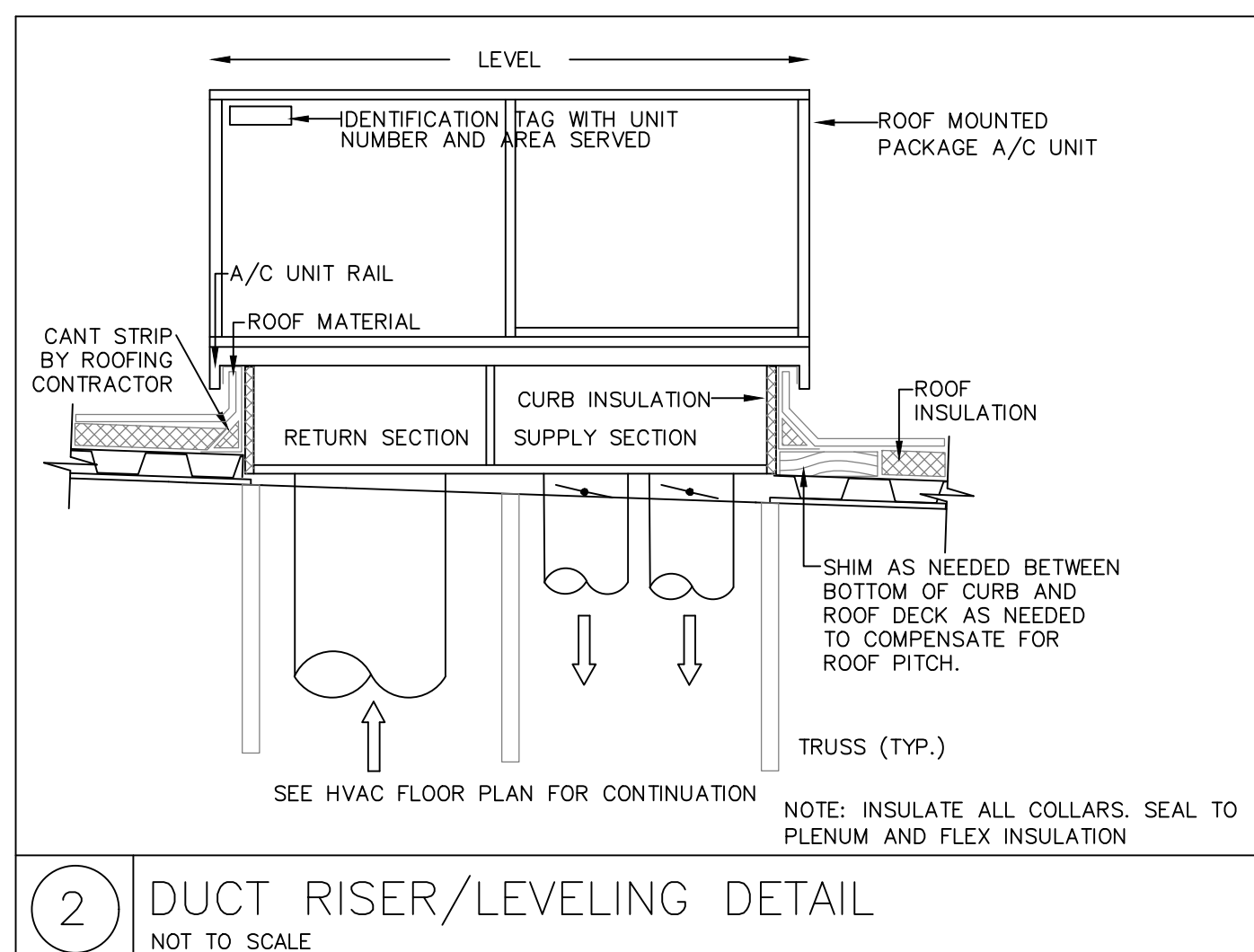
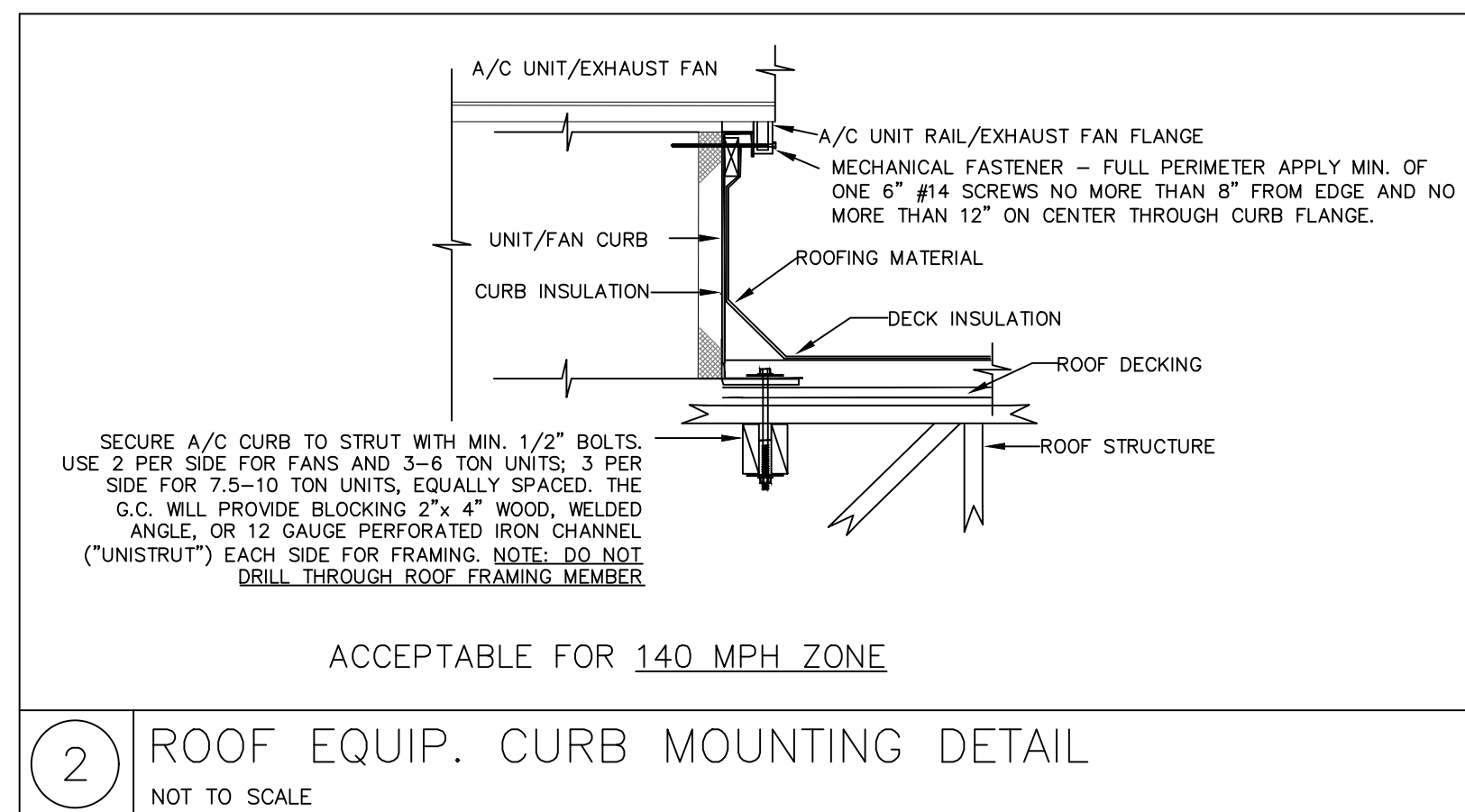
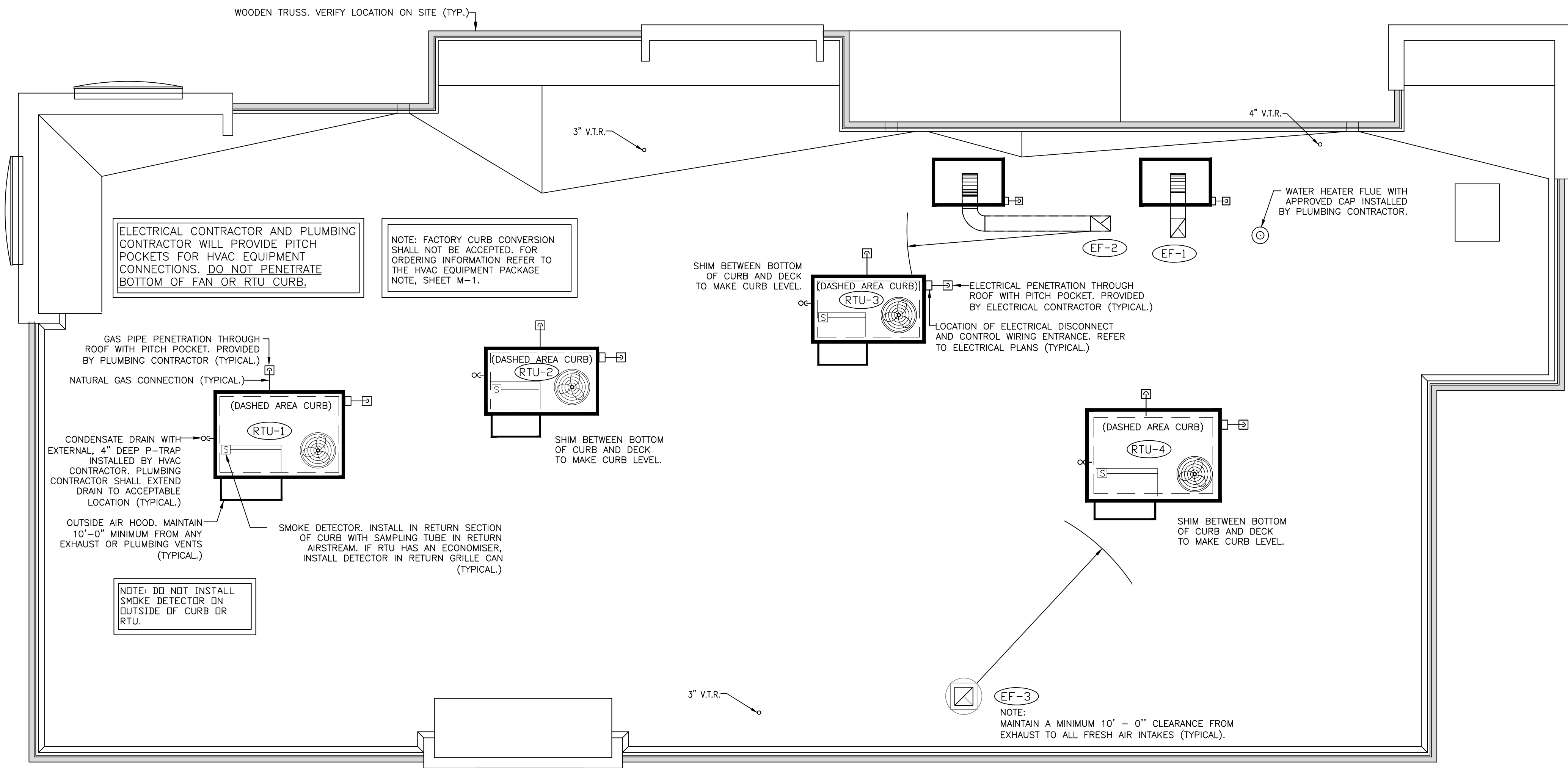
TO CONTACT THE NCA CONSULTANTS BY PHONE, CALL TOLL-FREE (877) 530-0078.

DATE	DESCRIPTION	BY	CHK	APP	REV
10-12-18	PROTOTYPE	USE ONLY	KML		

NOT FOR CONSTRUCTION

© Copyright 2022- Drawings, specifications, notes, database, computer files, field data, and reports as instruments of service prepared by the Design of Record. As instruments of service, these items remain the property of the Design of Record, who shall retain all statutory and other reserved rights, including the copyright thereto. Any use, reproduction or changes to these documents without written consent of NCA Consultants is a violation of federal copyright laws.

The General Contractor and the HVAC Contractor shall maintain distances from center of exhaust riser to the a/c unit curb as shown on this plan. Any discrepancies shall be reported immediately to the NCA Design Department at toll-free 877.530.0078 and the site-specific architect.



Issued:	Date:
A BKC Approval	10/29/2021
B Permit Set	1/28/2022
C Bid Set	4/25/2022
D	
E	
Revisions:	Date:
1	
2	
3	
4	
5	
6	
7	
8	
9	

Seal	Seal
PROJECT ARCHITECT/ENGINEER	DATE
PROJECT LEAD	DATE
PROJECT DESIGNER	DATE

Copyright © 2022  
APD Engineering & Architecture, LLC  
615 Fishers Run Victor, NY 14564  
585.742.2222

Drawing Alteration

It is a violation of law for any person, unless acting under the direction of licensed Architect, Professional Engineer, Landscape Architect, or Land Surveyor to alter any item on this document in any way. Any licensee who alters this document is required by law to affix his or her seal and to add the notation "Altered By" followed by his or her signature and the specific description of the alteration or revision.

[DO NOT SCALE PLANS]

Copying, Printing, Software and other processes required to produce these prints can stretch or shrink the actual paper or layout. Therefore, scaling of this drawing may be inaccurate. Contact APD E&A with any need for additional dimensions or clarifications.

**APD**  
ENGINEERING  
ARCHITECTURE  
615 Fishers Run Victor, NY 14564  
585.742.2222 - www.apd.com

**Ampler Restaurant Group**  
c/o Quattro Business Support  
SERVICES  
1850 Parkway Place  
Suite 1150  
Marietta, GA 30067

Burger King Inc.  
Store # 30011  
108 Egg Harbor Road  
Sewell, NJ 08080  
Gloucester County  
Project Name & Location:

<b>HVAC ROOF PLAN AND DETAILS</b>	
Drawing Name:	
Date: 11/8/2021	Project No. <b>21-0458</b>
Type: BK ROC-60	
Drawn By: SR	M-2
Scale: As Noted	Drawing No.