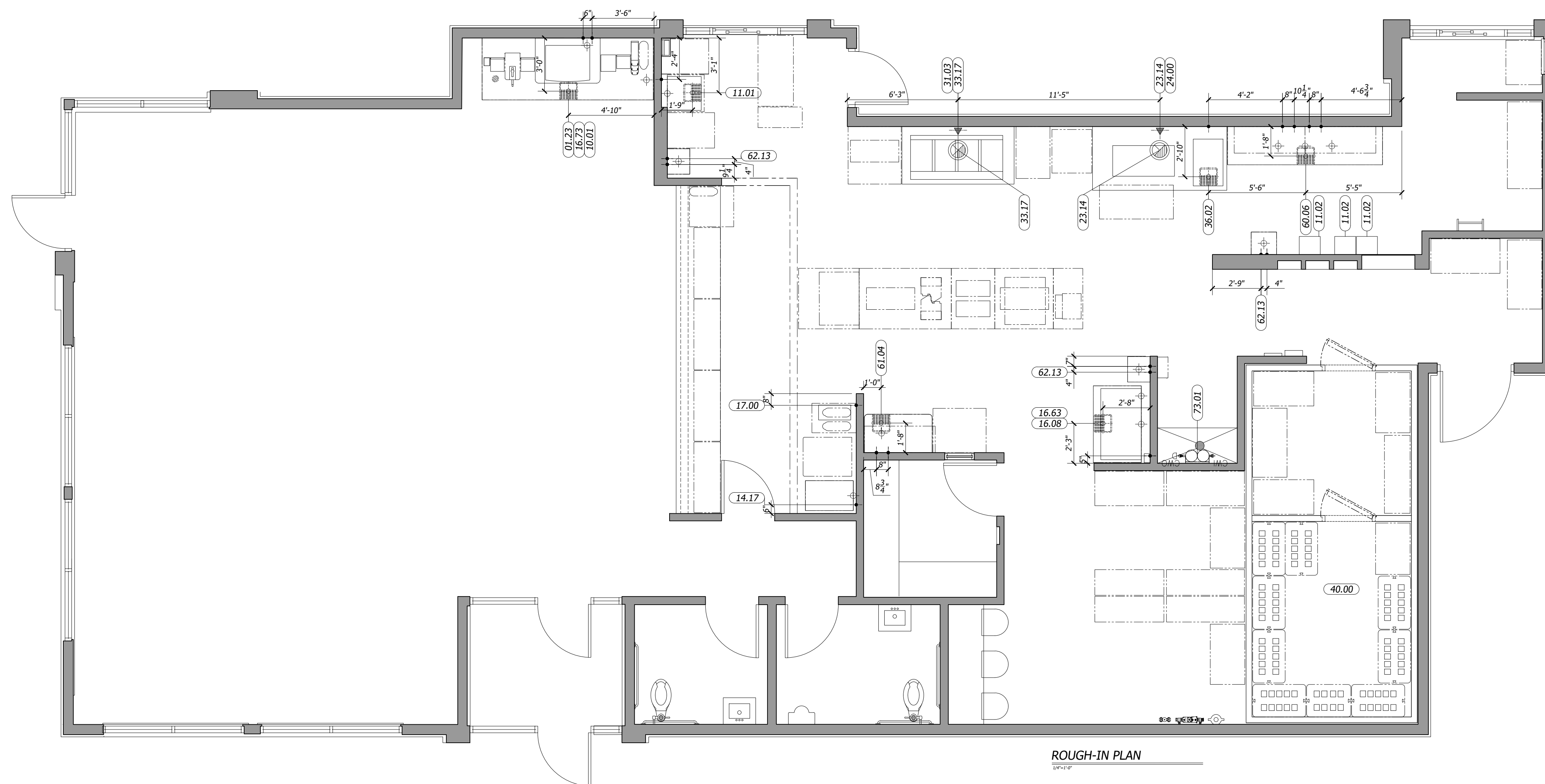


**PLUMBING SCHEDULES**

ITEM#	QTY	DESCRIPTION	MBTUH	GAS_IN	GAS_AFF_IN	COLD_WATER_IN	HOT_WATER_IN	WATER_AFF_IN	DRAIN_IN	DRAIN_AFF_IN	PLUMBING_REMARKS
01.23	1	BK BEVERAGE COUNTER, 9'-8"	-	-	-	-	-	-	1.5	FLOOR SINK	PC TO EXTEND DRAIN TO FLOOR SINK
10.01	1	12 V SODA SYSTEM W/ICE	-	-	-	0.5	-	-	1.5	FLOOR SINK	PC TO CONNECT WATER FROM FILTER AND TO EXTEND DRAIN TO FLOOR SINK
11.01	1	SODA SYSTEM, DROP IN 8V W/ICE	-	-	-	0.5	-	18	0.75	FLOOR SINK	PC TO CONNECT WATER FROM FILTER AND TO EXTEND DRAIN TO FLOOR SINK
11.02	3	CARBONATOR	-	-	-	0.5	-	84	-	-	WATER FROM WATER FILTER
14.17	1	FROZEN COKE MACHINE	-	-	-	VERIFY	-	VERIFY	-	-	VERIFY UTILITY REQUIREMENTS WITH OWNER PROVIDED EQUIPMENT
16.08	1	ICE BIN, 900 LB CAPACITY	-	-	-	-	-	-	.75	FLOOR SINK	PC TO EXTEND DRAIN TO FLOOR SINK
16.63	1	CUBER, 1230 LB CAPACITY SELF CONTAINED	-	-	-	0.5	-	-	0.75	FLOOR SINK	PC TO CONNECT WATER FROM FILTER AND TO EXTEND DRAIN TO FLOOR SINK
16.73	1	ICE MACHINE 1425LB	-	-	-	0.5	-	-	0.5	FLOOR SINK	PC TO CONNECT WATER FROM FILTER AND TO EXTEND DRAIN TO FLOOR SINK
17.00	1	COFFEE//TEA BREWER	-	-	-	0.5	-	12"	-	-	PC TO CONNECT WATER FROM FILTER
23.14	1	7'-7" BROILER/OVEN HOOD ROC STORES	-	1	-	-	-	-	-	-	PC TO CONNECT GAS LINE FROM HOOD TO MAIN GAS SUPPLY/REFER TO HOOD DRAWING
24.00	1	BROILER	111	0.75	-	-	-	-	-	-	PC TO CONNECT GAS TO GAS CONNECTION UNDER HOOD AND FROM HOOD TO MAIN GAS SUPPLY/ REFER TO HOOD DRAWINGS
31.03	1	4 VAT FRYER	300	1	-	-	-	-	-	-	PC TO CONNECT GAS TO GAS CONNECTION UNDER HOOD AND FROM HOOD TO MAIN GAS SUPPLY/ REFER TO HOOD DRAWINGS
33.17	1	6'-4" FRYER ROC WALL HUNG HOOD	-	1	-	-	-	-	-	-	PC TO CONNECT GAS LINE FROM HOOD TO MAIN GAS SUPPLY/REFER TO HOOD DRAWING
36.02	1	COMBI OVEN STEAMER ELECTRIC	-	-	-	0.75	-	-	1.5	FLOOR SINK	WATER FROM WATER FILTER
40.00	1	WALK-IN COOLER/FREEZER	-	-	-	-	-	-	-	-	-
60.06	1	BK 3-COMPARTMENT SINK 105"	-	-	-	0.5	0.5	18	1.5	FLOOR SINK	PC TO CONNECT DRAINS AND TO EXTEND TO FLOOR SINK
61.04	1	BK 1-COMPARTMENT SINK W/LH DRN BOARD, 46"	-	-	-	0.5	0.5	18	1.5	FLOOR SINK	PC TO CONNECT DRAINS AND TO EXTEND TO FLOOR SINK
62.13	3	PEDESTAL HAND SINK	-	-	-	0.5	0.5	18	1.5	12	-
73.01	1	WATER FILTER	-	-	-	0.5	-	72	-	-	PC TO CONNECT WATER LINES TO EQUIPMENT

**MECHANICAL SCHEDULES**

ITEM#	QTY	DESCRIPTION	DUCT_SIZE_IN	EXHAUST_CFM	EXHAUST_SPWG	HVAC_REMARKS
23.14	1	7'-7" BROILER/OVEN HOOD ROC STORES	10" DIA.	1100	1"	VERIFY WITH HOOD DRAWINGS
33.17	1	6'-4" FRYER ROC WALL HUNG HOOD	10" DIA.	950	2.0"	VERIFY WITH HOOD DRAWINGS



ROUGH-IN PLAN

**GENERAL PLUMBING CONTRACTOR NOTES**

- P. C. TO PROVIDE AND INSTALL SHUTOFF VALVES ON ALL POTABLE WATER AND GAS SUPPLY LINES AT EACH PIECE OF EQUIPMENT.
- P. C. TO CONNECT POTABLE WATER AND GAS SERVICE AND DIRECTLY TO THE EQUIPMENT ACCORDING TO THE MANUFACTURER'S INSTRUCTIONS.
- P. C. TO CONNECT THE EQUIPMENT TO THE BUILDING WASTE DRAINAGE SYSTEM ACCORDING TO THE MANUFACTURER'S INSTRUCTIONS.
- P. C. TO RECONNECT PLUMBING AND GAS PIPING ON PREPLUMBED EQUIPMENT DISASSEMBLED FOR SHIPMENT.
- WHERE EQUIPMENT IS NOT PREPLUMBED, P. C. TO CONNECT THE PLUMBING AND GAS SERVICE AND PROVIDE INTERPIPING AS REQUIRED.
- P. C. TO INSTALL FAUCETS, DRAIN ASSEMBLIES AND ACCESSORIES PROVIDED WITH THE EQUIPMENT.
- WHERE A SERVICE CHASE IS PROVIDED WITH THE EQUIPMENT, P. C. TO INSTALL THE PLUMBING AND/OR GAS SERVICE THROUGH THE SERVICE CHASE TO THE CONNECTION POINT(S) ON THE EQUIPMENT.
- P. C. TO PROVIDE AND INSTALL CONDENSATE DRAIN LINE(S) FROM THE WALK-IN COOLER/FREEZER EVAPORATOR COIL(S).
- P. C. TO PROVIDE AND INSTALL BACK FLOW PREVENTION DEVICES WHEN REQUIRED BY THE AUTHORITY HAVING JURISDICTION.
- P. C. TO PROVIDE AND INSTALL AUTOMATIC GAS SHUTOFF VALVES WHEN REQUIRED BY THE AUTHORITY HAVING JURISDICTION.
- H&K'S DRAWINGS INCLUDE ONLY THOSE POTABLE WATER, WASTE DRAINS AND GAS SERVICES REQUIRED FOR SPECIFIC KITCHEN EQUIPMENT. REFER TO THE ARCHITECTURAL BUILDING DRAWINGS FOR LOCATIONS OF OTHER PLUMBING AND GAS SERVICES.
- P. C. TO VERIFY THE UTILITY REQUIREMENTS FOR ITEMS NOT PROVIDED BY H&K.
- ALL PORTIONS OF WORK SHALL BE DONE IN ACCORDANCE WITH APPLICABLE LOCAL, STATE AND NATIONAL CODES, ORDINANCES AND STANDARDS.
- NOTIFY THE H&K PROJECT MANAGER IMMEDIATELY IF COMPLIANCE WITH A LOCAL, STATE OR NATIONAL CODE IS IN CONFLICT WITH THESE DRAWINGS.
- GAS OPERATED OR HEATED EQUIPMENT SHALL BEAR THE A. G. A. LABEL.
- WATER PRESSURE IN EQUIPMENT AREA SHOULD NOT EXCEED 60 P. S. I. IN BOTH MAIN HOT AND COLD WATER SUPPLY LINES.

**ABBREVIATIONS**

- A. F. F. ABOVE FINISHED FLOOR
- F. P. T. FEMALE PIPE THREAD

**GENERAL HEATING, VENTILATION AND AIR CONDITIONING CONTRACTOR NOTES**

- H.V.A.C. CONTRACTOR (H. C.) TO PROVIDE AND INSTALL EXHAUST FANS AND ROOF CURBS UNLESS OTHERWISE INDICATED IN THE EQUIPMENT SCHEDULE.
- H. C. TO INSTALL CEILING SUSPENDED EXHAUST HOOD(S).
- H. C. TO INSTALL EXHAUST AND INDUCTION AIR DUCT WORK PROVIDED WITH THE EXHAUST HOOD(S). NOTE: THE EXHAUST DUCTS PROVIDED WITH THE HOODS ARE DESIGNED FOR INSTALLATION IN A SINGLE STORY, STANDARD BUILDING. IN OTHER APPLICATIONS, H. C. TO PROVIDE AND INSTALL SUPPLEMENTAL DUCT WORK AS REQUIRED.
- ALL EXHAUST, MAKE-UP AND INDUCTION AIR QUANTITIES AND SPECIFICATIONS ARE AT THE DUCT COLLAR UNLESS OTHERWISE NOTED.
- THE FIRE EXTINGUISHING SYSTEM IS TO BE INSTALLED BY AN INSTALLER CERTIFIED AND LICENSED BY THE SYSTEM MANUFACTURER. ALL SYSTEM COMPONENTS NOT INCLUDED WITH THE EXHAUST HOODS ARE TO BE PROVIDED AND INSTALLED BY THE SYSTEM INSTALLER.
- H. C. TO INSTALL PRECHARGED REFRIGERATION LINES PROVIDED BY H&K.
- H. C. TO STARTUP AND ADJUST THE W/B REFRIGERATION SYSTEM(S) AND ANY REFRIGERATION SYSTEM(S) WITH REMOTE CONDENSING UNIT(S).
- H&K'S DRAWINGS INCLUDE ONLY THOSE H. V. A. C. REQUIREMENTS FOR SPECIFIC KITCHEN EQUIPMENT PROVIDED BY H&K. REFER TO THE ARCHITECTURAL BUILDING DRAWINGS FOR LOCATIONS OF OTHER H. V. A. C. SERVICES.
- H. C. TO VERIFY THE REQUIREMENTS FOR ITEMS NOT PROVIDED BY H&K.
- ALL PORTIONS OF WORK SHALL BE DONE IN ACCORDANCE WITH APPLICABLE LOCAL, STATE AND NATIONAL CODES, ORDINANCES AND STANDARDS.
- NOTIFY THE H&K PROJECT MANAGER IMMEDIATELY IF COMPLIANCE WITH A LOCAL, STATE OR NATIONAL CODE IS IN CONFLICT WITH THESE DRAWINGS.
- THE MAXIMUM STRAIGHT DUCT RUN FOR THE FANS SPECIFIED IS 60'-0" FROM THE TOP OF THE HOOD TO THE BOTTOM OF THE FAN (OR TOP OF CURB) BEFORE IT IS NECESSARY TO CHANGE THE FAN REQUIREMENTS. IF THERE ARE ELBOWS IN THE DUCT RUN, ADD 2' S.P. FOR EVERY ELBOWS (CAUTION THIS MAY CHANGE THE FAN REQUIREMENT). H. V. A. C. IS RESPONSIBLE FOR DETERMINING EXACT FAN REQUIREMENTS.

**ABBREVIATIONS**

- C. F. M. CUBIC FEET PER MINUTE
- F. P. M. FEET PER MINUTE
- S. P. STATIC PRESSURE

**DISCLAIMER**

IMPORTANT NOTICE: TO ALL CONTRACTORS AND TRADES

THESE DRAWINGS HAVE BEEN PREPARED BY H&K INTERNATIONAL AT THE REQUEST OF THE OWNER. THE INFORMATION PROVIDED MAY BE TIME SENSITIVE AND IS SUBJECT TO CHANGE AS REVISIONS TO THE EQUIPMENT LISTING MAY HAVE OCCURRED AFTER THE RELEASE OF THIS DRAWING.

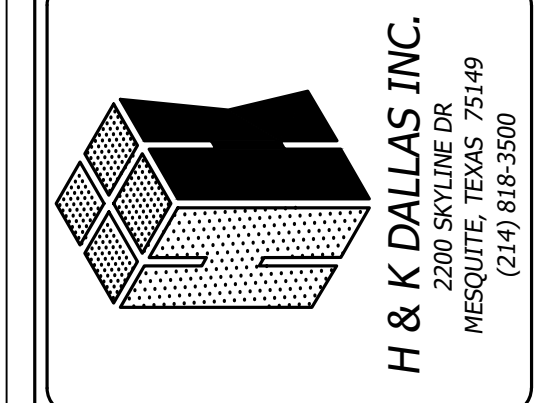
PLEASE VERIFY WITH THE OWNER THAT THE DRAWING PROVIDED REFLECTS THE MOST CURRENT INFORMATION AVAILABLE. ALSO REQUEST A LIST OF ALL OWNER SUPPLIED EQUIPMENT AND EQUIPMENT SUPPLIED BY OTHERS WITH DETAILS AND SPECIFICATIONS THAT APPLY TO THIS EQUIPMENT.

H&K INTERNATIONAL DOES NOT ASSUME RESPONSIBILITY FOR EQUIPMENT SUPPLIED BY OTHER PARTIES.

H&K INTERNATIONAL 103014

**SYMBOL LEGEND**

- RECEPTACLES
- JUNCTION BOX
- EXHAUST DUCT ABOVE HOOD
- GAS LINE
- WATER LINE
- DRAIN LINE
- FLOOR SINK
- FLOOR DRAIN
- EXISTING FULL WALL
- EXISTING LOW WALL
- NEW FULL WALL
- NEW LOW WALL
- OPTIONAL EQUIPMENT
- NEW EQUIPMENT ON EQUIPMENT PLAN
- RELOCATED EQUIPMENT ON EQUIPMENT PLAN
- EXISTING EQUIPMENT
- EQUIPMENT ON ROUGH-IN PLAN
- EXISTING TRUSSES
- SERVICE AREA
- NEW MENU BOARD
- VALANCE



BY	EN	EN	EN
REVISION	REMOVED ITEM 52976	(REFRIGERATED CHICKEN BATTER STATION)	UPDATED AS PER NEW X-BASE
DATE	12APR22	24MAR22	16FEB22
DATE:	20DEC21	DRAWN:	EN
CHECKED:	INT	SCALE:	SEE PLAN
CUSTOMER:	BURGER-KING CORPORATION		
TITLE:	PLUMBING_ROUGH_INS		
STORE NO:	00824	SHEET:	4 OF 4
THESE DRAWINGS SPECIFICATIONS ARE THE PROPERTY OF H&K AND SHALL NOT BE REPRODUCED OR COPIED WITHOUT H&K'S WRITTEN PERMISSION.			
SEWELL, NJ			
<b>K-4C</b>			