

## GENERAL ROOFING NOTES:

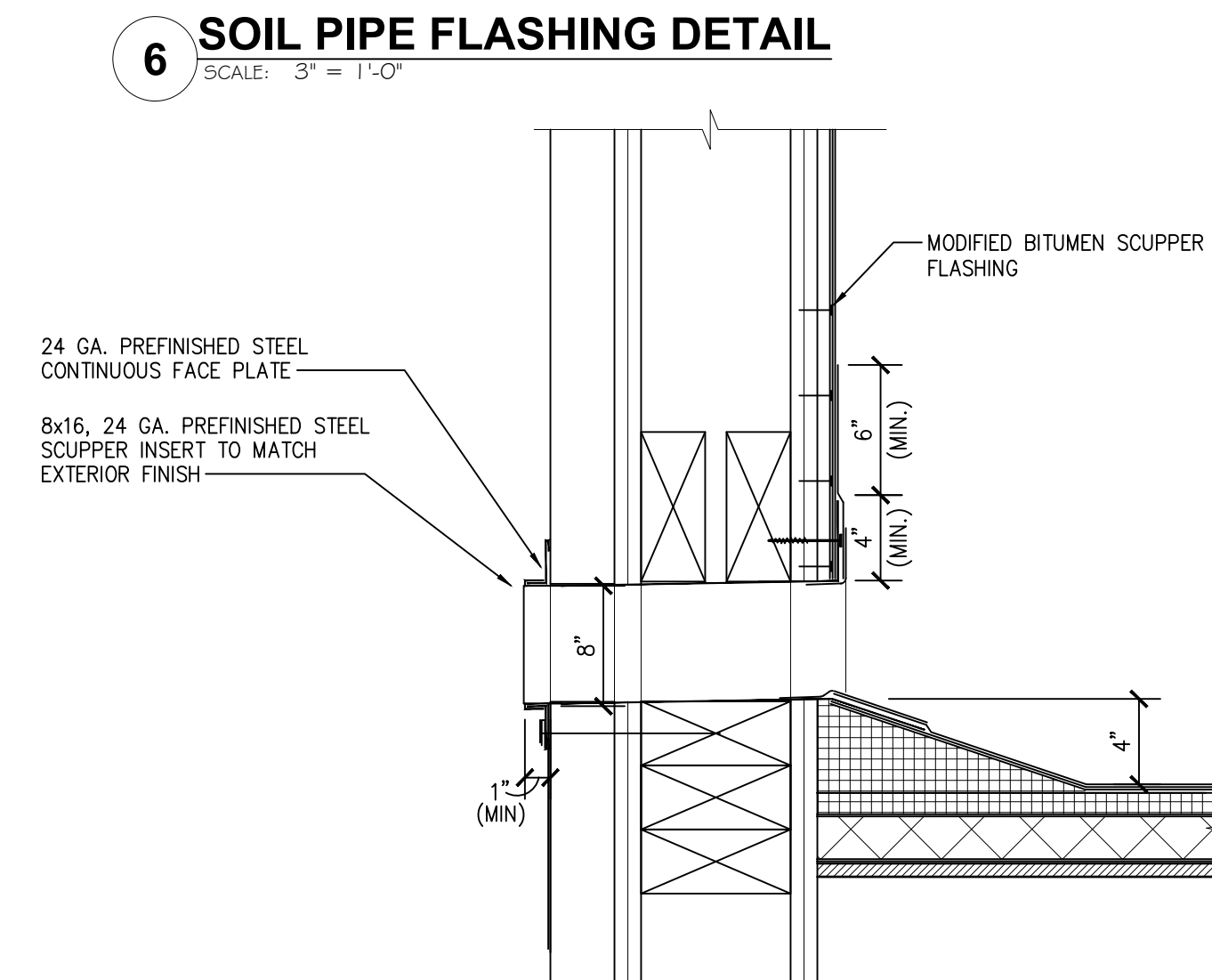
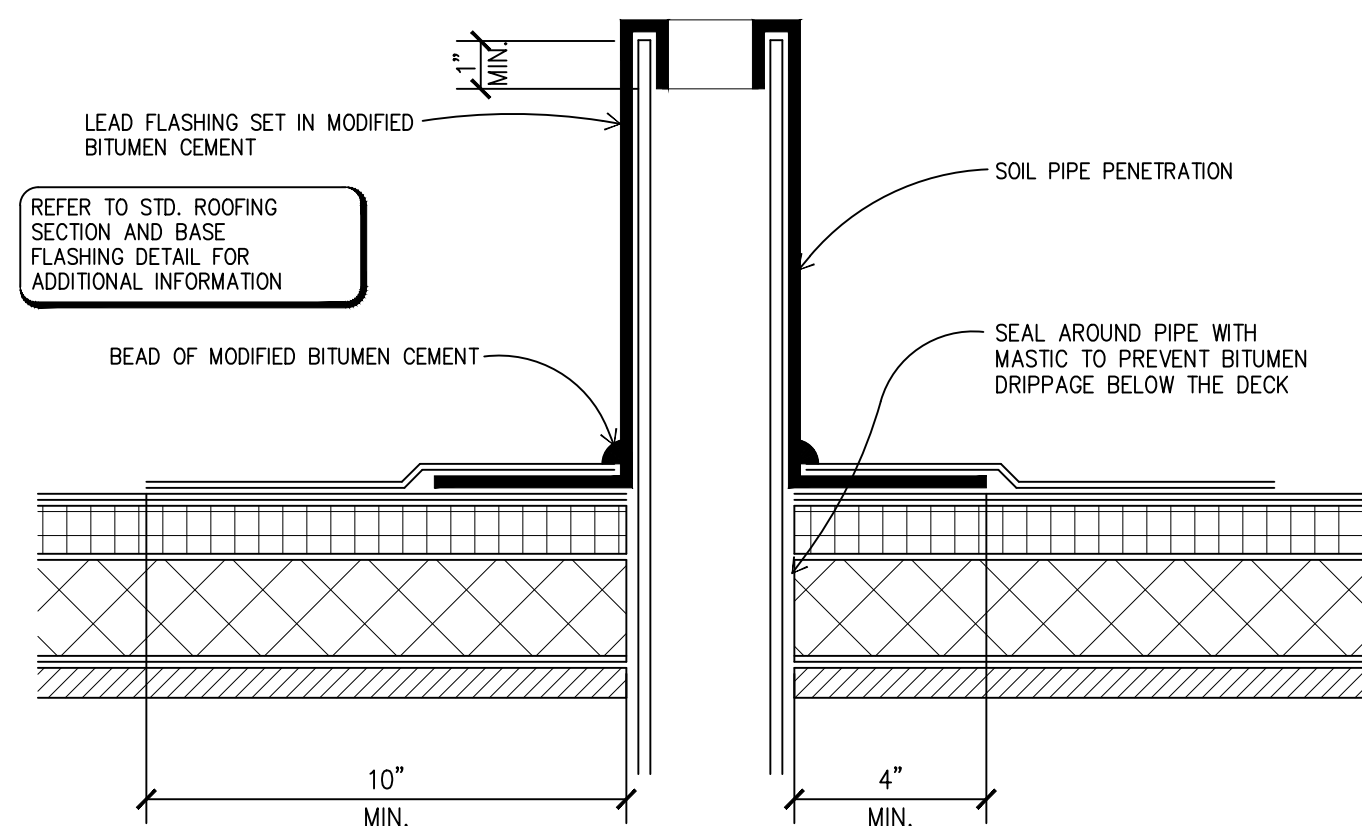
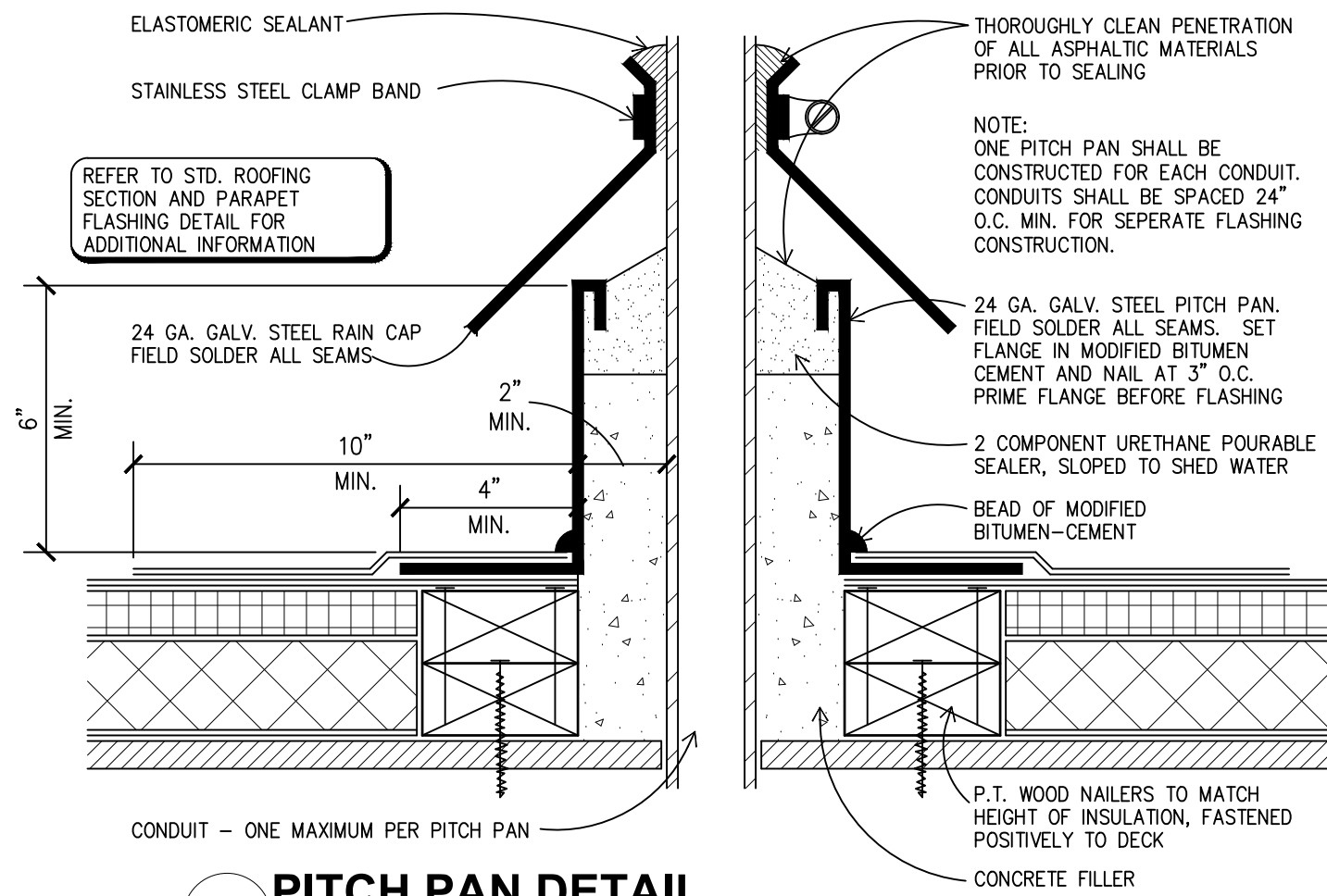
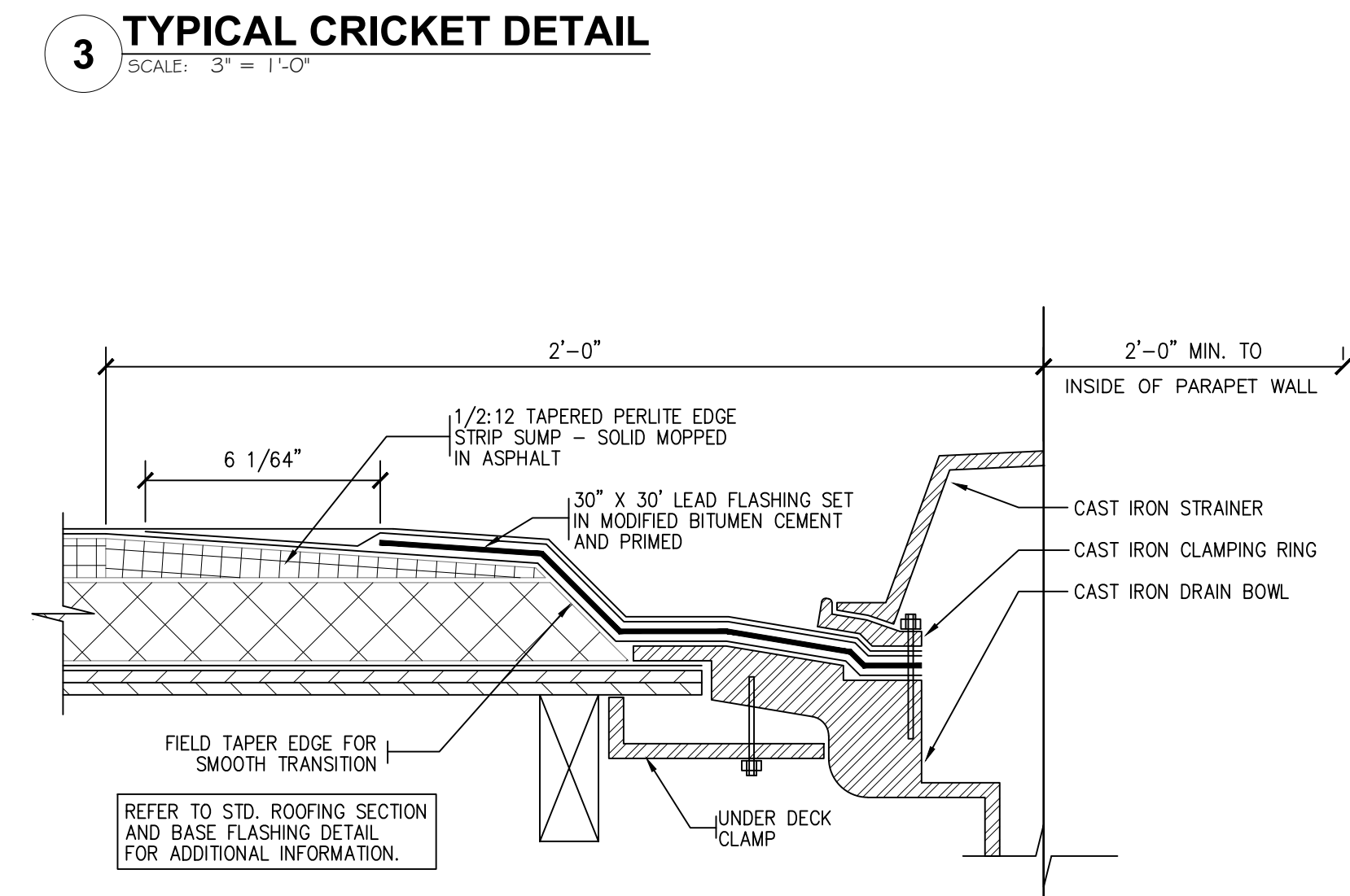
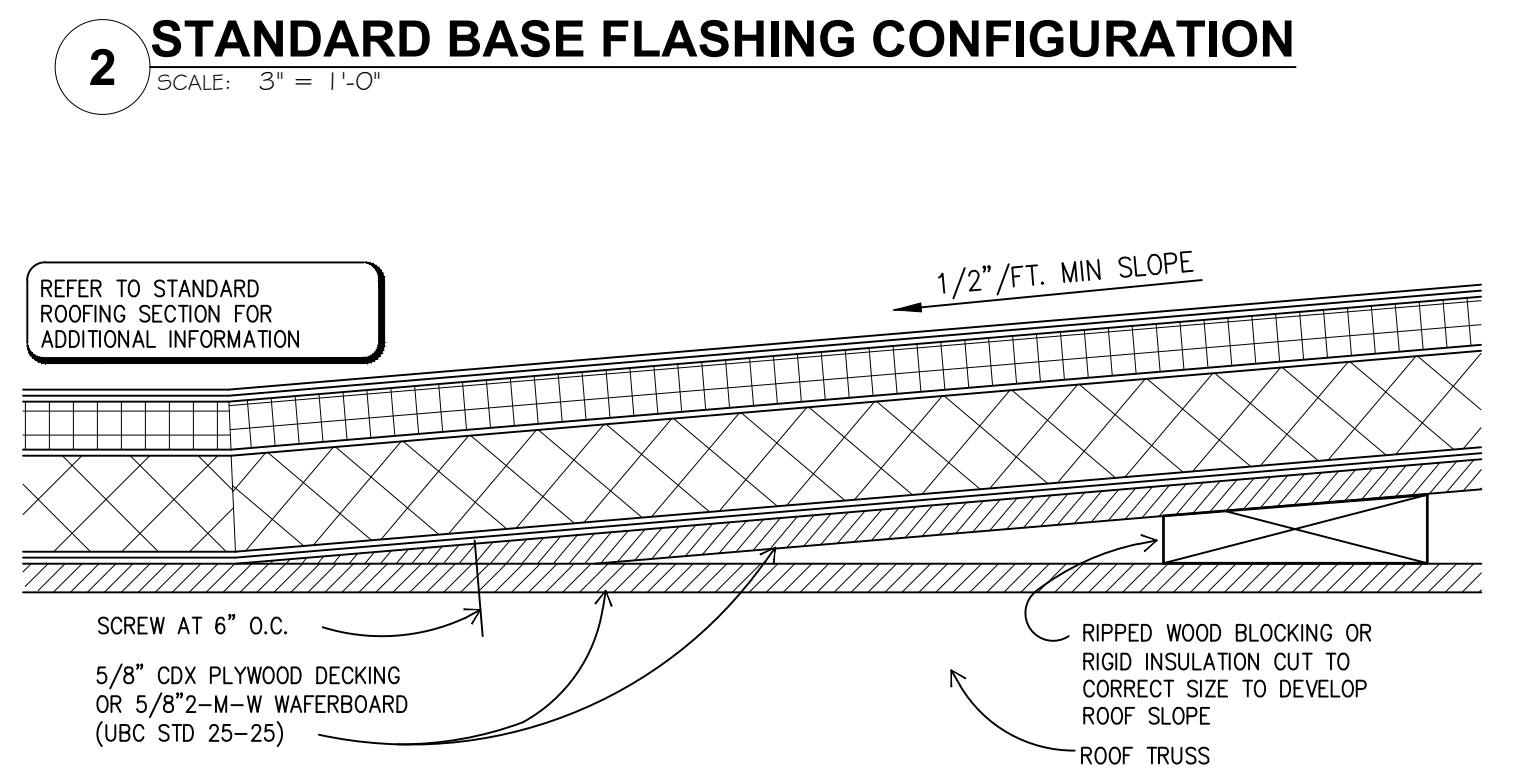
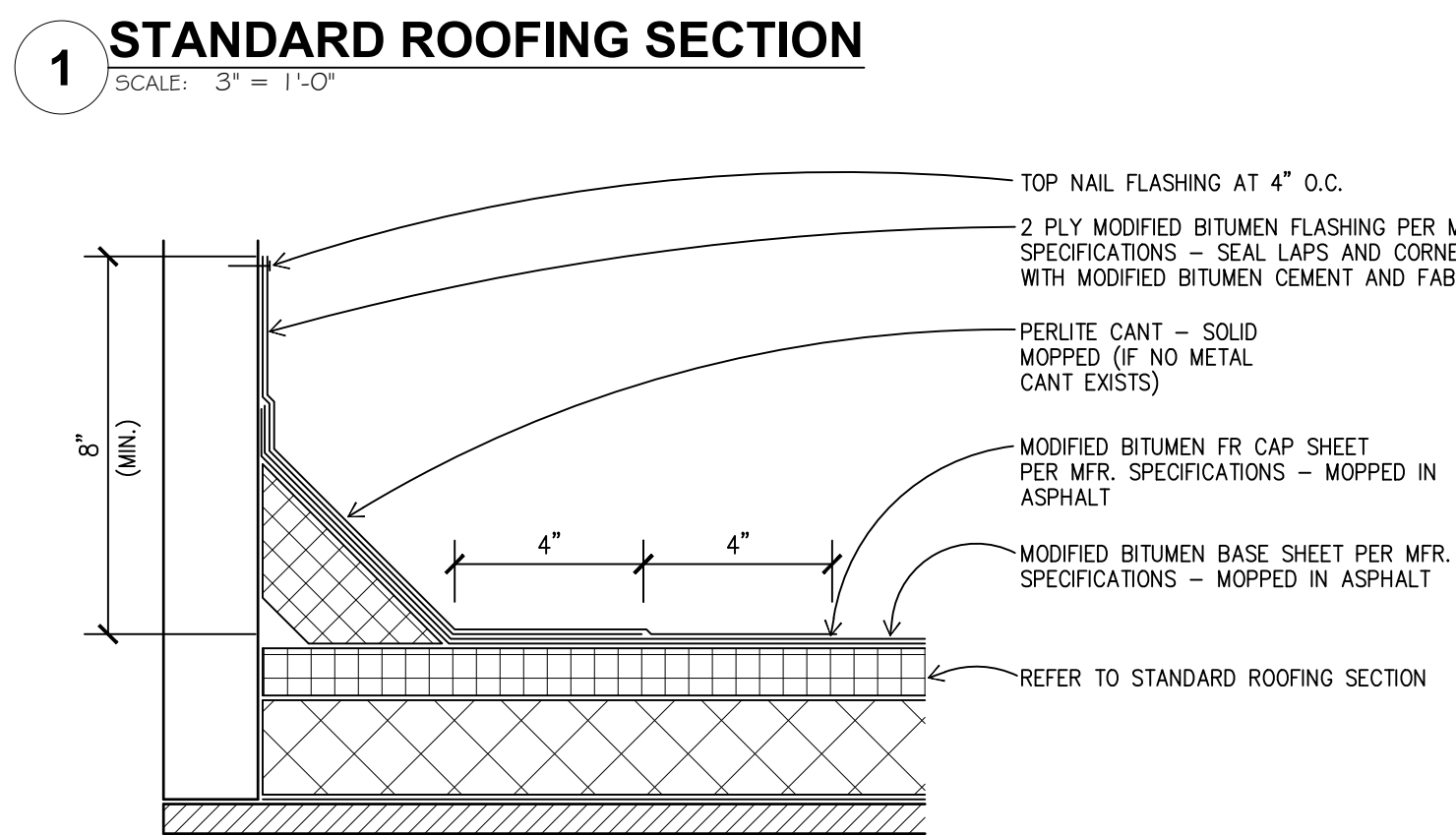
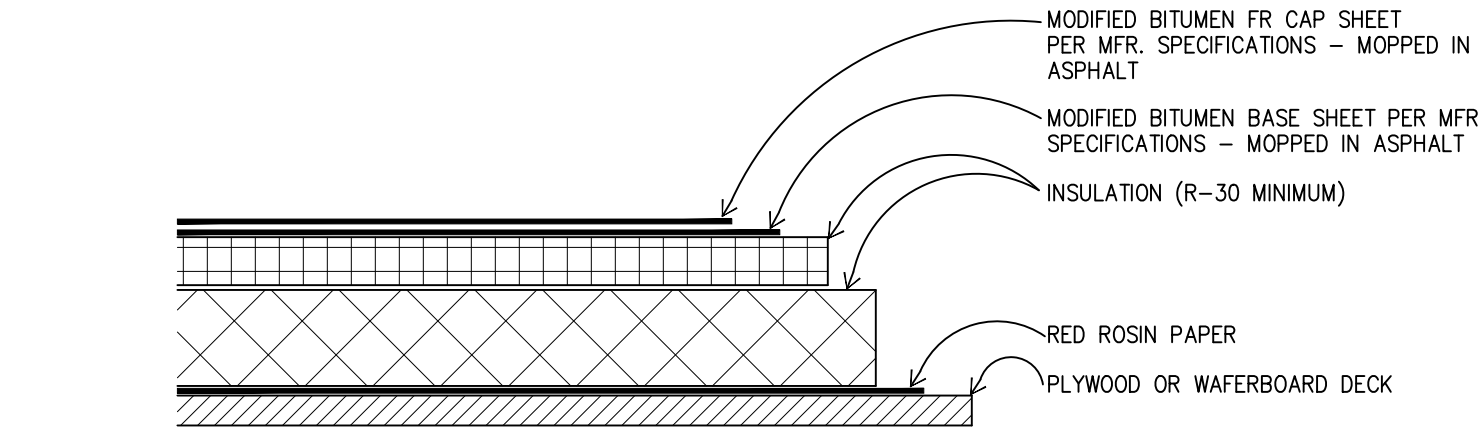
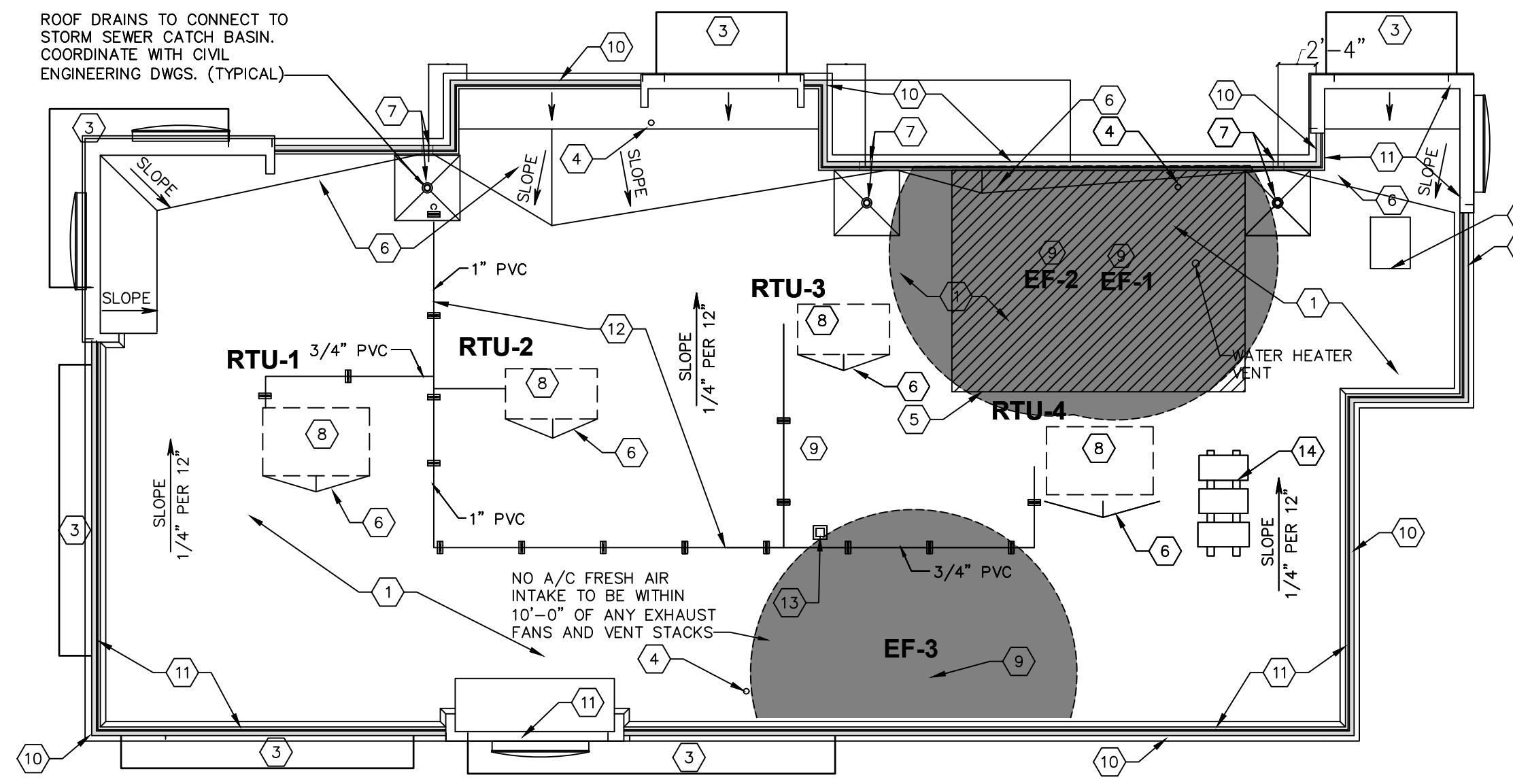
- ROOFING SUBCONTRACTOR TO COORDINATE LOCATION OF H.V.A.C. UNITS AND ROOF TOP ACCESSORIES WITH STRUCTURAL, MECHANICAL AND ELECTRICAL DRAWINGS FOR PLACEMENT AND TAPERED RIGID INSULATION BOARD LAY-OUT AND SUBSEQUENT INSTALLATION IN ORDER TO AVOID PONDING WATER CONDITIONS ATTRIBUTABLE TO BOARD LAY-OUT ISSUES. ROOF SYSTEMS SPECIFIED SHALL BE APPLIED ONLY BY MANUFACTURER APPROVED APPLICATOR IN ORDER TO MEET GUARANTEE REQUIREMENTS.
- COORDINATE LOCATION OF MECHANICAL UNITS WITH STRUCTURAL AND MECHANICAL DRAWINGS.
- HVAC CONDENSATE LINES TO TERMINATE AT ROOF DRAIN OR AS REQUIRED BY LOCAL CODE.
- REFER TO STRUCTURAL AND M-E-P DRAWINGS FOR ADDITIONAL INFORMATION.
- ALL CURBS AND PIPE PENETRATIONS SHALL HAVE A MINIMUM OF 16" CLEAR FROM EACH OTHER FOR ROOF FLASHING PURPOSES. ALL EQUIPMENT SHALL HAVE A MINIMUM OF 16" CLEAR FROM ALL ADJACENT PARAPETS. ALL HVAC MOUNTED EQUIPMENT (DISCONNECT BOXES, GFCI, PIPE SUPPORTS) SHALL NOT BE CLOSER THAN 16" FROM EACH OTHER OR CURB. NO UNISTRUT PIPE SUPPORTS SHALL BE USED AS VERTICAL MEMBERS FOR MOUNTING EQUIPMENT TO ROOF SURFACE.
- PONDING WATER IS DEFINED AS WATER THAT DOES NOT DRAIN OR DISSIPATE FROM THE ROOF WITHIN 48 HOURS AFTER PRECIPITATION.
- CONTRACTOR SHALL "SUGAR-IN" ALL ASPHALT. BLEED-OUT ON PILES WITH ADDITIONAL GRANULES TO MATCH EXISTING COLORATION OF THE MINERAL SURFACE CAP SHEET.
- ALL FLASHING CEMENTS, ASPHALTS, PRODUCTS AND ACCESSORIES SHALL BE APPROVED BY ROOFING MANUFACTURER WITH THE MANUFACTURER'S BRAND. ALL ASPHALTS SHALL BE AMERICAN MANUFACTURED PRODUCTS.

## KEYED NOTES:

- TWO-PLY MODIFIED BITUMEN MEMBRANE W/GLASS FIBER REINFORCEMENT. BOTTOM PLY SHALL BE UNSURFACED, TOP PLY SHALL HAVE WHITE MINERAL SURFACE.
- ROOF ACCESS SCUTTLE, REFERENCE DETAIL, THIS SHEET.
- PREFABRICATED METAL CANOPY, REFERENCE SHEETS A-7, A-8.
- VENT THROUGH ROOF - PROVIDE PREFABRICATED DURO-LAST VENT FLASHING FOR ALL VENTS AND PIPE PENETRATIONS. REFERENCE DETAIL #6, THIS SHEET.
- INSTALL MODIFIED BITUMEN SACRIFICE SHEET AS SPECIFIED AT KITCHEN EXHAUST.
- ROOF CRICKET WITH SLOPE TO MATCH ROOF, REFER TO DETAIL #3, THIS SHEET.
- ROOF DRAIN AND OVERFLOW ROOF SCUPPERS - REFER TO DETAILS #4 AND #7 THIS SHEET.
- ROOFTOP AIR CONDITIONING UNIT - REFER TO MECHANICAL PLANS.
- EXHAUST FAN - REFER TO MECHANICAL PLANS.
- ILLUMINATED PARAPET LIGHT BAND.
- METAL COPING.
- PVC CONDENSATE DRAIN (SIZE AS SHOWN) WITH PIPE SUPPORTS EVERY 5'-0". TERMINATE CONDENSATE DRAIN AT PRIMARY SCUPPER. REFER TO DETAIL #8, THIS SHEET FOR ADDITIONAL INFORMATION.
- PROVIDE PITCH PAN WITH CONDUIT OVER OFFICE FOR SATELLITE DISH/ANTENNA.
- EQUIPMENT STAND FOR WALK-IN BOX COOLER/FREEZER CONDENSERS AND ICE MACHINE CONDENSER. REFER TO EQUIPMENT STAND DETAIL, THIS SHEET.

## GENERAL NOTES:

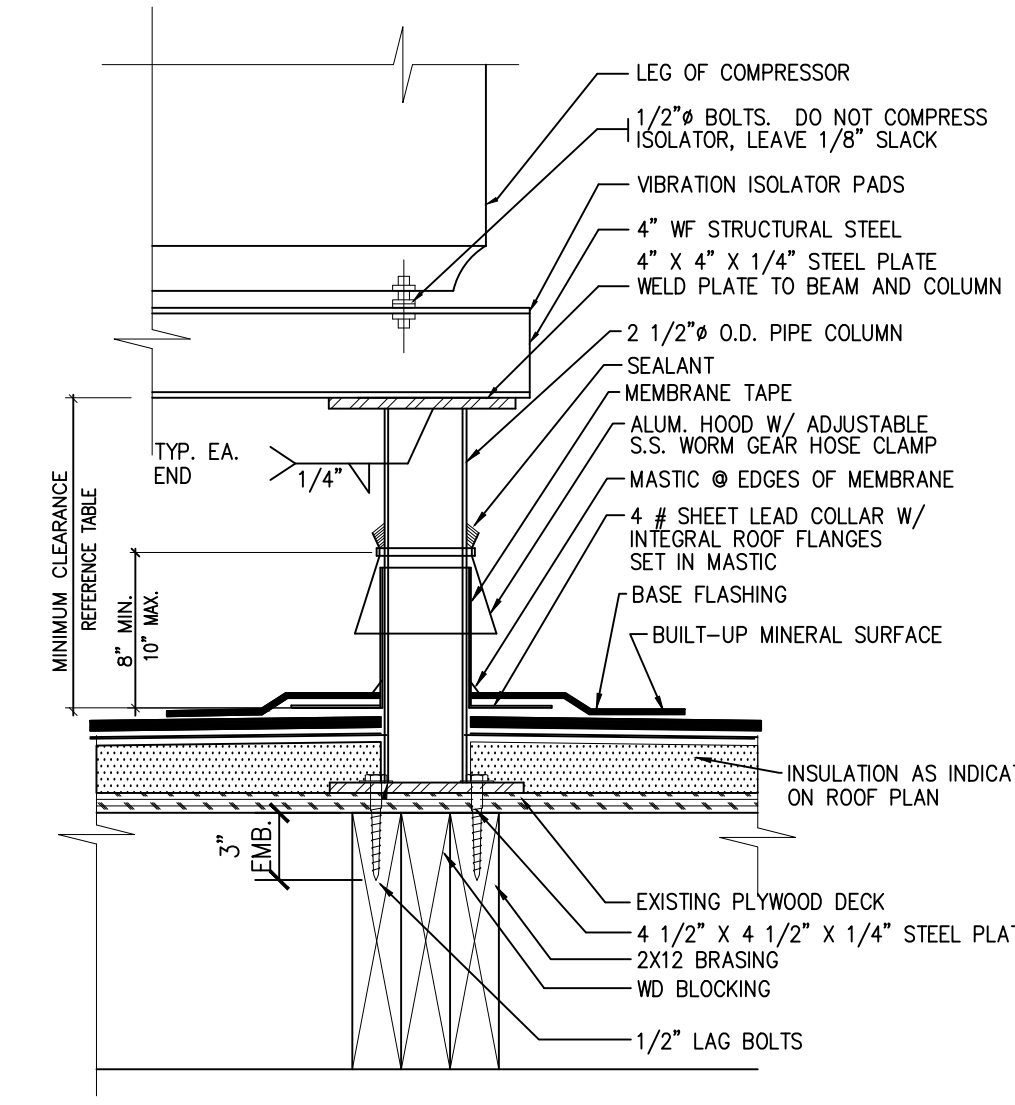
- THE ROOF STRUCTURE SHALL NOT BE USED FOR STOCKPILING OF EQUIPMENT OR MATERIALS UNLESS APPROVED BY THE ARCHITECT, STRUCTURAL ENGINEER AND THE JOIST MANUFACTURER.
- THE ROOFING SYSTEM SHALL BE AS PER DRAWINGS AND PER MANUFACTURER'S SPECIFICATIONS.
- COORDINATE ROOF ELEVATIONS WITH STRUCTURAL DRAWINGS. REFER TO SPECIFICATION SHEET FOR ROOF RELATED ITEMS, INCLUDING GUARANTEES, CURBS, FLASHING, ETC.



## 20 ROOF PLAN

SCALE: 1/8" = 1'-0"

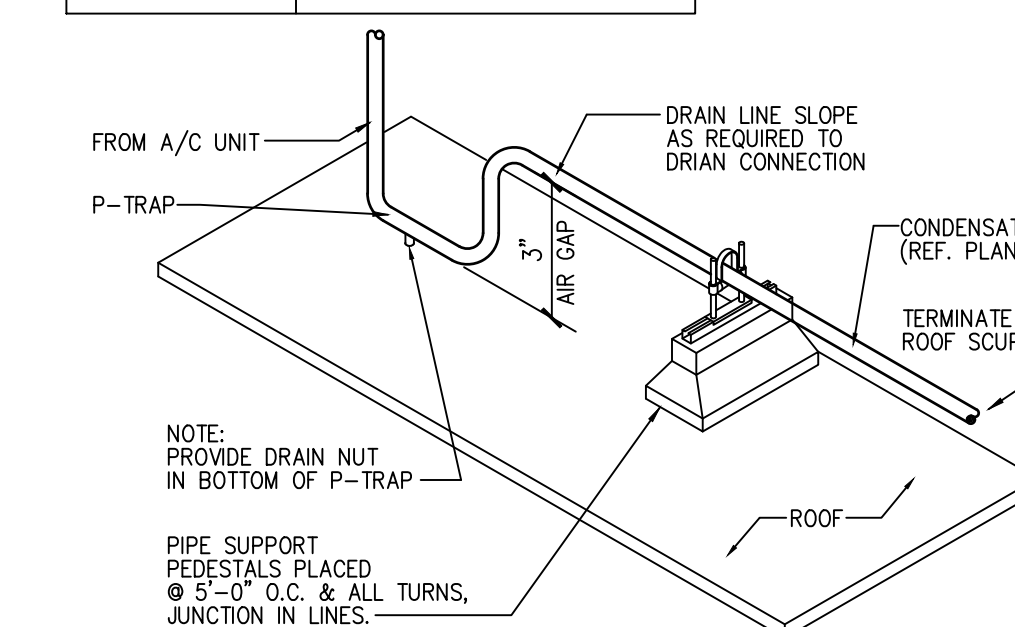
NOTE: ALL ROOFING DETAILS TO BE VERIFIED AND COORDINATED WITH MANUFACTURER'S SPECIFICATIONS AND WARRANTIES.



VERIFY W/ EQUIPMENT SUPPLIER IF IN CONTRACT.

### CLEARANCE BELOW RAISED ROOF MOUNTED MECHANICAL UNITS (INCHES)

WIDTH OF UNIT	MINIMUM CLEARANCE ABOVE ROOF SURFACE
< 24	14
24 < 36	18
36 < 48	24
48 < 60	30
> 60	48



Issued:	Date:
A BKC Approval	10/29/2021
B Permit Set	1/28/2022
C Bid Set	4/25/2022
D	
E	

Revisions:	Date:
1	
2	
3	
4	
5	
6	
7	
8	
9	

Seal	Seal	DATE
PROJECT ARCHITECT/ENGINEER		
PROJECT LEAD		DATE
PROJECT DESIGNER		DATE

Copyright © 2022  
APD Engineering & Architecture, LLC  
Drawing Alteration  
It is a violation of law for any person, unless acting under the direction of licensed Architect, Professional Engineer, Landscape Architect, or Land Surveyor to alter any item on this document in any way. Any licensee who alters this document is required by law to affix his or her seal and to add the notation "Altered By" followed by his or her signature and the specific description of the alteration or revision.

DO NOT SCALE PLANS  
Copying, Printing, Software and other processes required to produce these prints can stretch or shrink the actual paper or layout. Therefore, scaling of this drawing may be inaccurate. Contact APD E&A with any need for additional dimensions or clarifications.

**APD**  
ENGINEERING  
ARCHITECTURE  
615 Fishers Run Victor, NY 14564  
585.742.2222 - www.apd.com

**Ampler Restaurant Group**  
c/o Quattro Business Support Services  
1850 Parkway Place  
Suite 1150  
Marietta, GA 30067

Burger King Inc.  
Store # 30011  
108 Egg Harbor Road  
Sewell, NJ 08080  
Gloucester County  
Project Name & Location:

Roof Plan & Details	
Drawing Name:	Project No.
Date: 11/8/2021	21-0458
Type: BK ROC-60	
Drawn By: ICP	A-5
Scale: As Noted	Drawing No.