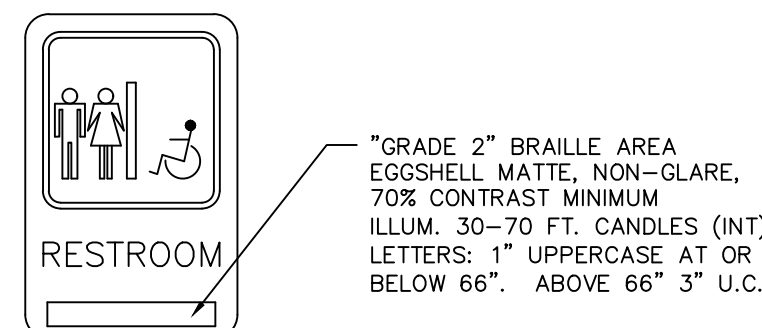


RESTROOM PLAN

SCALE: 1/2" = 1'-0"



RESTROOM SIGN DETAIL

SCALE: 1/2" = 1'-0"

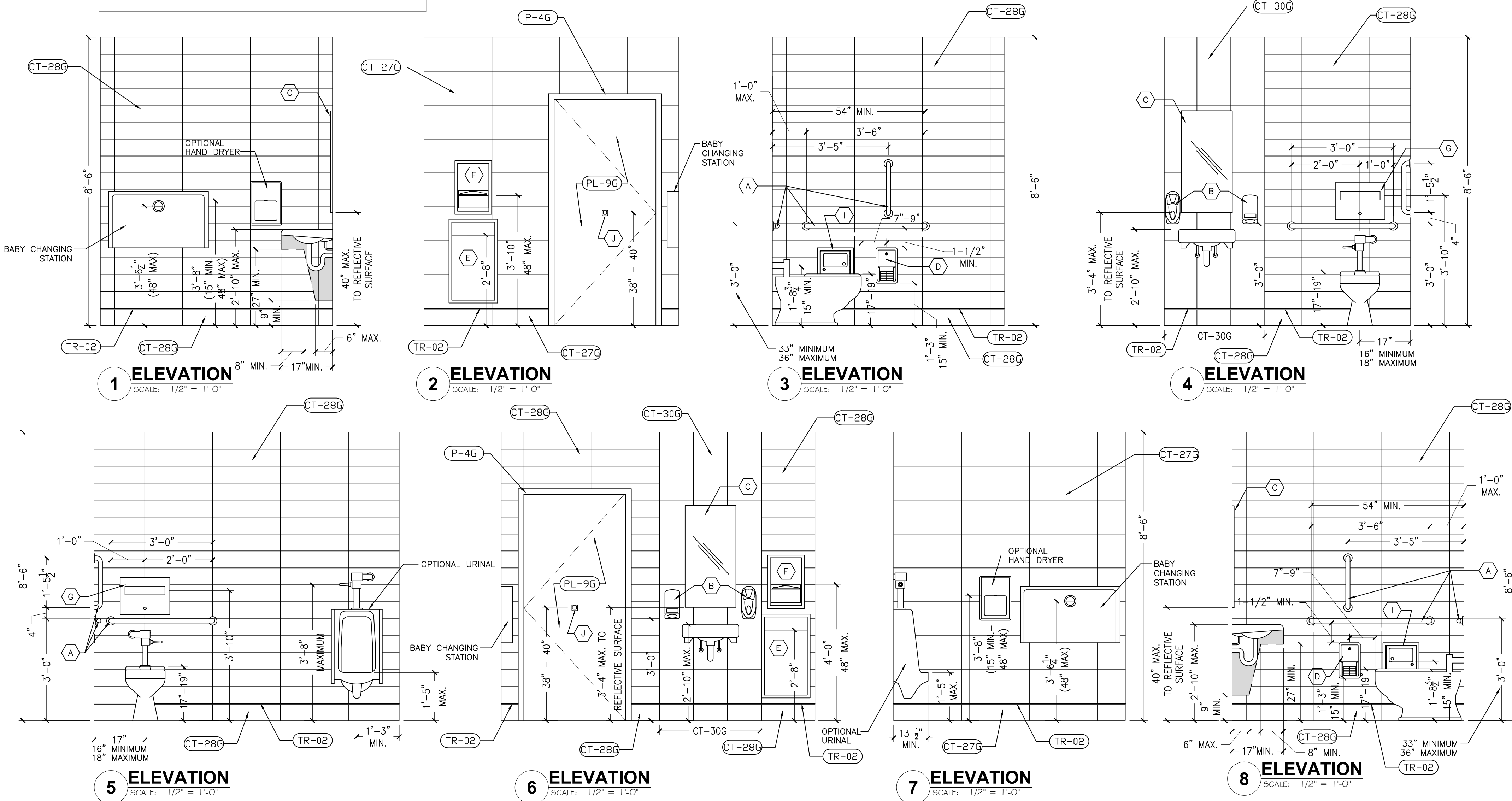
GENERAL NOTES:

- A. FOR INTERIOR FINISHES, RESTROOM & KITCHEN ACCESSORIES REFER TO INTERIOR DECOR SHEETS.
- B. PLUMBING FIXTURES TO BE PROVIDED BY THE GENERAL CONTRACTOR.
- C. ALL PLUMBING FIXTURES, FAUCETS AND ACCESSORIES TO BE ADA COMPLIANT
- D. ALL EXPOSED PIPING UNDER LAVATORIES TO BE INSULATED TO PROTECT FROM CONTACT. THERE SHALL BE NO SHARP OR ABRASIVE SURFACES UNDER LAVATORIES.

RESTROOM / KITCHEN ACCESSORIES:

- A. GRAB BAR: BOBRICK 250 LBF. MINIMUM 33" MIN. TO 36" MAX. HEIGHT TO THE TOP OF THE GRIPPING SURFACE. PROVIDE THE REQUIRED QUANTITY AND LENGTH AS INDICATED ON THE DRAWINGS OR AS REQUIRED BY THE GOVERNING CODE. THE BAR SHALL BE 1-1/2" IN DIAMETER AND MOUNTED WITH 1-1/2" CLEARANCE FROM THE WALL.
 - B. WALL MOUNTED SOAP DISPENSER AND HAND SANITIZER DISPENSER (36" MAX. HEIGHT) SUPPLIED BY "ECOLAB" AND INSTALLED BY THE G.C. NOTE: SOAP AND HAND SANITIZER DISPENSERS TO BE PROVIDED AT EACH KITCHEN HANDSINK.
 - C. MIRROR: (BOTTOM OF REFLECTIVE SURFACE AT 40" MAXIMUM HEIGHT) MODEL B-165-1836 (18"x36") STAINLESS STEEL CHANNEL FRAME MIRROR WITH THEFT RESISTANT SCREWS BY BOBRICK OR APPROVED EQUIVALENT.
 - D. TOILET PAPER HOLDER: OPTION 1: BOBRICK B-3688, SUPPLIER - HAINES JONES & CADBURY OPTION 2: 3" TWIN JUMBO MODEL #58250 BY NORTH AMERICAN CORPORATION.
 - E. PAPER WASTE RECEPTACLE: (REQUIRED) MODEL B-3644 AS MANUFACTURED BY BOBRICK OR APPROVED EQUIVALENT. (ROUGH OPENING 17-3/16"W x 30-5/8"H x 8-1/8"D MIN.)
 - F. REQUIRED - PAPER TOWEL DISPENSER: BOBRICK B-359 SUPPLIED BY HAINES JONES & CADBURY AND INSTALLED BY THE G.C. OPTIONAL (IN ADDITION TO PAPER TOWEL DISPENSER): ELECTRIC HAND DRYER: ASI ROVAL SERIES AUTOMATIC TOUCH-FREE SENSOR HAND DRYER MODEL: ASI ROVAL 20199 NOTE: HAND DRYER TO BE INSTALLED AT A MAXIMUM HEIGHT OF 48" FROM FINISH FLOOR ELEVATION TO TOP OF SENSOR OR PER ADA REQUIREMENTS. NOTE: PROVIDE PAPER TOWEL DISPENSER "SAN JAMAR" MODEL #T-1490BK AT EACH HAND SINK IN KITCHEN.
 - G. TOILET SEAT COVER DISPENSER: BOBRICK B-3013, SUPPLIER - HAINES JONES & CADBURY
 - H. URINAL SCREEN: (OPTION 1) NEVAMAR WK0017T COLOR: VENERABLE OLD OAK (OPTION 2) BOBRICK 1080/1180 DURALINE SERIES #EO-09 COLOR: BLACK
 - I. SANITARY NAPKIN DISPOSAL: BOBRICK B-353, RECESSED.
 - J. COAT HOOK: BOBRICK MODEL B-6717 TO BE MOUNTED ON INSIDE OF EACH RESTROOM DOOR FOR SINGLE OCCUPANCY RESTROOMS AND EACH RESTROOM STALL DOOR FOR MULTIPLE OCCUPANCY RESTROOMS. MOUNT AT 38"-40" A.F.F. FOR ADA ACCESSIBLE LOCATIONS AND AT 48" A.F.F. MAXIMUM FOR NON-ADA ACCESSIBLE LOCATIONS.
 - K. BABY CHANGING STATION: KOALA KARE #KB110-SSWM (HORIZONTAL) WALL MOUNTED OR #KB200-01 (HORIZONTAL) WALL MOUNTED IN GREY. SANITARY BED LINERS FOR BABY CHANGING STATION: KOALA KARE #KB150-99 NOTE: CHANGING STATION OPTION TO COMPLY WITH ALL ACCESSIBILITY REQUIREMENTS. PROVIDE BLOCKING AS REQUIRED FOR STATION SUPPORT.
 - L. LAVATORY FAUCET: WATERFRONT MODEL: 300988 SINGLE LEVER HANDLE LAVATORY FAUCET, CHROME-PLATED FINISH
 - M. WATER CLOSET: AMERICAN STANDARD - MADERA FLOWISE 15" HEIGHT ELONGATED FLUSHOMETER TOILET, SUPPLIER - HAINES JONES & CADBURY
 - N. WATER CLOSET - ADA: AMERICAN STANDARD - MADERA FLOWISE 16 1/2" HEIGHT 1.6 GPF FLUSHOMETER TOILET SYSTEM, SUPPLIER - HAINES JONES & CADBURY
 - O. URINAL - ADA: AMERICAN STANDARD - WASHBROOK FLOWISE UNIVERSAL URINAL - HAINES JONES & CADBURY
 - P. LAVATORY: CUSTOM THROUGH SINK "GLACIER WHITE" COMMERCIAL INTERIORS MANUFACTURING (CIM) OR HAINES JONES & CADBURY
- OPTIONAL:**
- TOILET STALL PARTITIONS: NEVAMAR WK0017T COLOR: VENERABLE OLD OAK
 - (OPTIONAL) BOBRICK 1080/1180 DURALINE SERIES #EO-09 COLOR: BLACK OR PHENOLIC URINAL SCREEN AND TOILET PARTITIONS MAY BE USED AS AN ALTERNATE TO NEVAMAR SPECIFICATION.

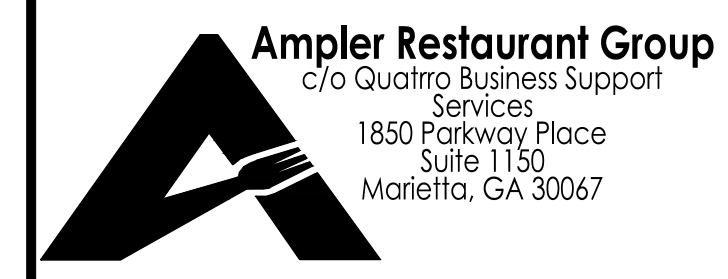
NOTE:
REFER TO 20/20 GARDEN GRILL DECOR GUIDELINES FOUND AT DESIGNWITHBK.COM (INTERIOR DESIGN GUIDELINES) FOR REQUIRED RESTROOM GRAPHICS.



Issued:	Date:
A BKC Approval	10/29/2021
B Permit Set	1/28/2022
C Bid Set	4/25/2022
D	
E	
Revisions:	Date:
1	
2	
3	
4	
5	
6	
7	
8	
9	

Seal	Seal
PROJECT ARCHITECT/ENGINEER	DATE
PROJECT LEAD	DATE
PROJECT DESIGNER	DATE

Copyright ©2022
APD Engineering & Architecture, LLC
Drawing Alteration
It is a violation of law for any person, unless acting under the direction of a Licensed Architect, Professional Engineer, Landscape Architect, or Land Surveyor to alter any item on this document in any way. Any licensee who alters this document is required by law to affix his or her seal and to add the notation "Altered by" followed by his or her signature and the specific description of the alteration or revision.
[DO NOT SCALE PLANS]
Copying, Printing, Software and other processes required to produce these prints can stretch or shrink the actual paper or layout. Therefore, scaling of this drawing may be inaccurate. Contact APD E&A with any need for additional dimensions or clarifications.



Burger King Inc.
Store # 30011
108 Egg Harbor Road
Sewell, NJ 08080
Gloucester County
Project Name & Location:

Restroom ADA Plans & Interior Elevations
Drawing Name:

Date: 11/8/2021	Project No. 21-0458
Type: BK ROC-60	
Drawn By: MGV	A-3.1
Scale: As Noted	Drawing No.