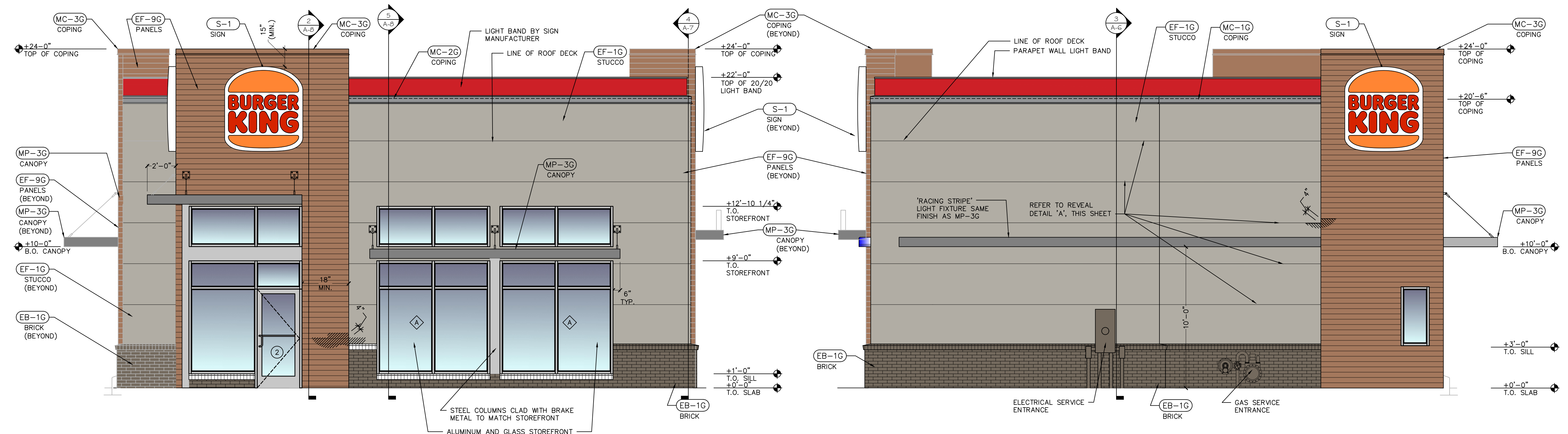


Issued:	Date:
A BKC Approval	10/29/2021
B Permit Set	1/28/2022
C Bid Set	4/25/2022
D	
E	

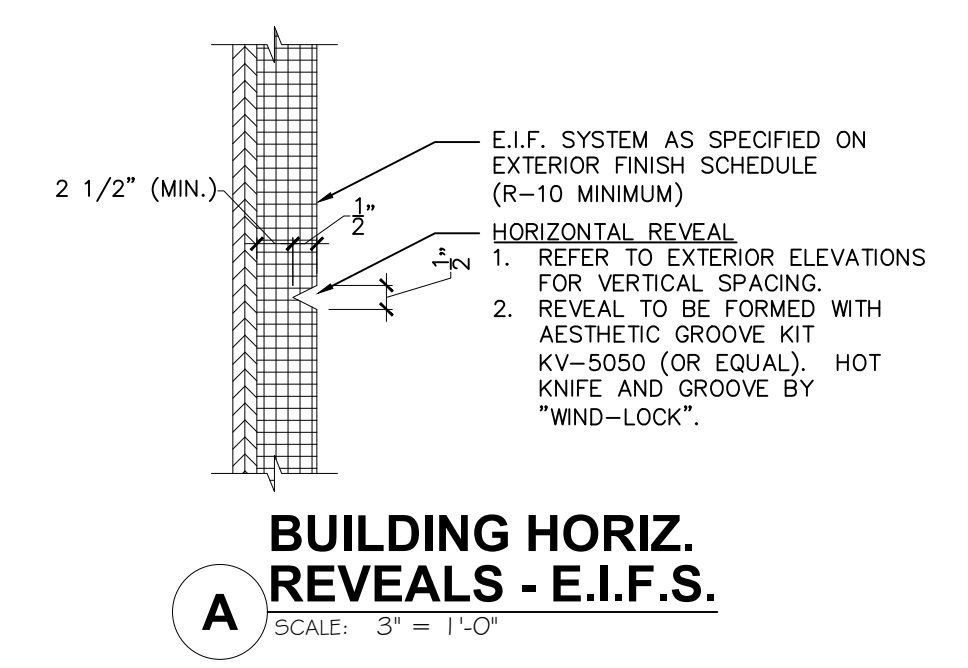
Revisions:	Date:
1	
2	
3	
4	
5	
6	
7	
8	
9	



3 Southwest (Front) Elevation
SCALE: 1/4" = 1'-0"

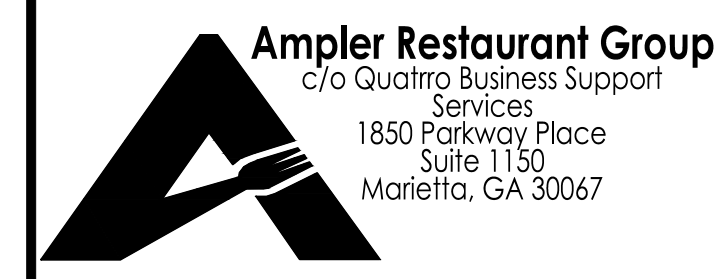
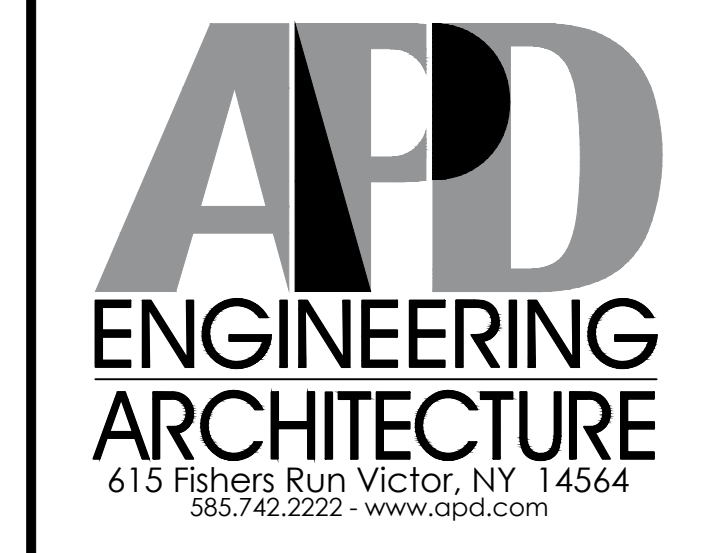
4 Northeast (Rear) Elevation
SCALE: 1/4" = 1'-0"

EXTERIOR FINISH SCHEDULE	
EXTERIOR METAL (MC-1G) METAL COPING LOCATION: TOP OF LIGHT BAND WALL CAP MANUFACTURER: W.P. HICKMAN SYSTEMS PRODUCT: PERMA SNAP PLUS COLOR: A-30 SILVERSMITH CONTACT: W.P. HICKMAN 828-676-1700 WWW.WPH.COM (MC-2G) METAL COPING LOCATION: BELOW LIGHT BAND MANUFACTURER: W.P. HICKMAN SYSTEMS PRODUCT: PERMA SNAP PLUS COLOR: FACTORY FINISH TO MATCH EP-2G PPG TANNERS TAUPE CONTACT: W.P. HICKMAN 828-676-1700 WWW.WPH.COM (MC-3G) METAL COPING LOCATION: TOP OF ARCHON MANUFACTURER: W.P. HICKMAN SYSTEMS PRODUCT: PERMA SNAP PLUS COLOR: PAINT TO MATCH EP-9G PPG 'CEDAR' CONTACT: W.P. HICKMAN 828-676-1700 WWW.WPH.COM (MP-3G) METAL CANOPY LOCATION: ABOVE DOORS AND WINDOWS MANUFACTURER: SEE APPROVED CANOPY SUPPLIERS PRODUCT: CUSTOM METAL CANOPY COLOR: CLEAR ANODIZED	EXTERIOR FINISH (EF-1G) MATERIAL: STUCCO LOCATION: AS INDICATED MANUFACTURER: STO OR APPROVED EQUAL PRODUCT: STO POWERWALL STUCCO FINISH TEXTURE: MATCH EXISTING COLOR: MATCH EP-2G PPG 'DESERT DUNE' CONTACT: TIM SALERNO AT STO 407-466-5371 (EB-1G) MATERIAL: EXTERIOR BRICK LOCATION: GENERAL MANUFACTURER: EVOLUTION BRICK PRODUCT: THIN BRICK COLOR: SIERRA TUMBLED CONTACT: GABE POWERS 502-558-4612
EXTERIOR PAINT AND VINYL (EP-4G) EXTERIOR PAINT LOCATION: EXTERIOR BRICK WAINSCOT AND SILL MANUFACTURER: SHERWIN WILLIAMS PRIMER: LOXON CONCRETE AND MASONRY A24W300 PAINT: SUPERPAINT EXT SATIN A89 SERIES FINISH: SATIN COLOR: 'HOMESTEAD BROWN' SW7515 CONTACT: GLENN REMLER 954-547-1217, GLENN.J.REMLER@SHERWIN.COM	NOTE: 1. ALL FINISHES AS PER GARDEN GRILL FINISH SCHEDULE. REFER TO EXTERIOR FINISH SCHEDULE AT DESIGNWITHBK.COM. 2. EXTERIOR ELEVATION DESIGN, INCLUDING PARAPET HEIGHTS, FINISHES, AND COLORS MAY BE MODIFIED BASED ON FINAL MUNICIPAL APPROVALS. 3. BOLLARD COVER: WWW.POSTGUARD.COM; FLAT TOP BOLLARD COVER IN GREY WITH (2) 3M SCOTCHLITE RECESSED REFLECTIVE STRIPES.



Seal	Seal
PROJECT ARCHITECT/ENGINEER	DATE
PROJECT LEAD	DATE
PROJECT DESIGNER	DATE

Copyright © 2022
APD Engineering & Architecture, LLC
 Drawing Alteration
 It is a violation of law for any person, unless acting under the direction of a Licensed Architect, Professional Engineer, Landscape Architect, or Land Surveyor to alter any item on this document in any way. Any licensee who alters this document is required by law to affix his or her seal and to add the notation "Altered By" followed by his or her signature and the specific description of the alteration or revision.
 [DO NOT SCALE PLANS]
 Copying, Printing, Software and other processes required to produce these prints can stretch or shrink the actual paper or layout. Therefore, scaling of this drawing may be inaccurate. Contact APD E&A with any need for additional dimensions or clarifications.



Burger King Inc.
 Store # 30011
 108 Egg Harbor Road
 Sewell, NJ 08080
 Gloucester County
 Project Name & Location:

Drawing Name: Exterior Elevations	
Date: 11/8/2021	Project No. 21-0458
Type: BK ROC-60	
Drawn By: MGV	A-2B
Scale: As Noted	Drawing No.