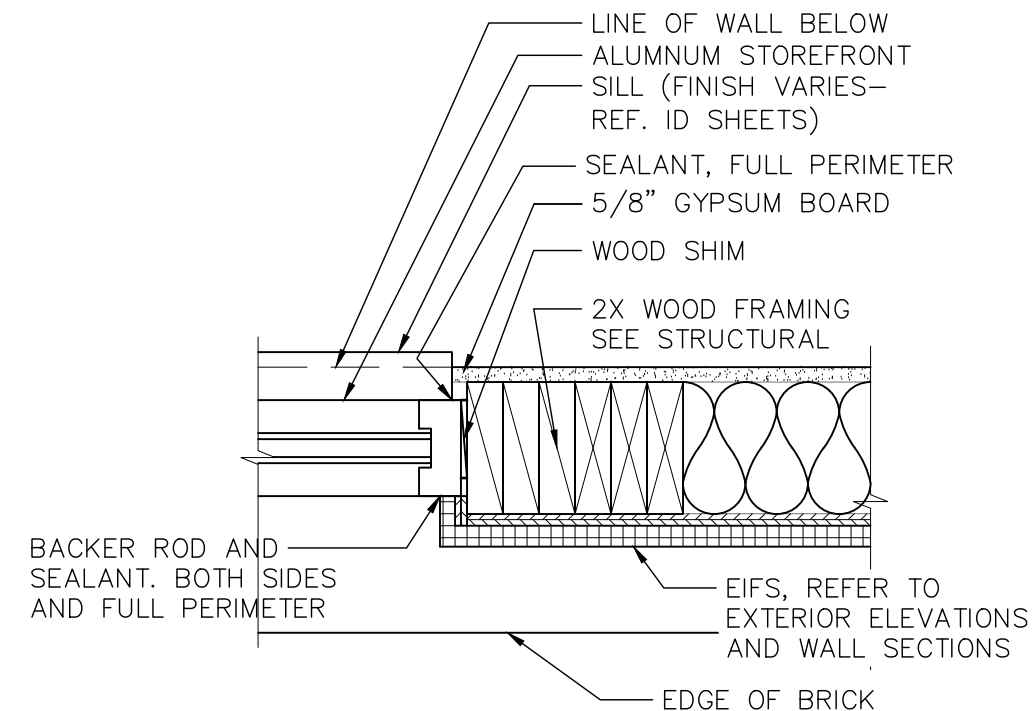
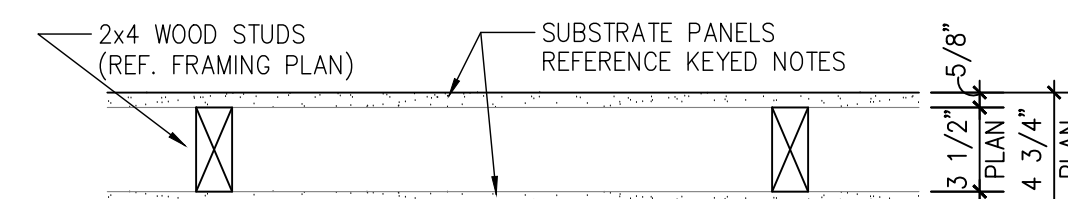


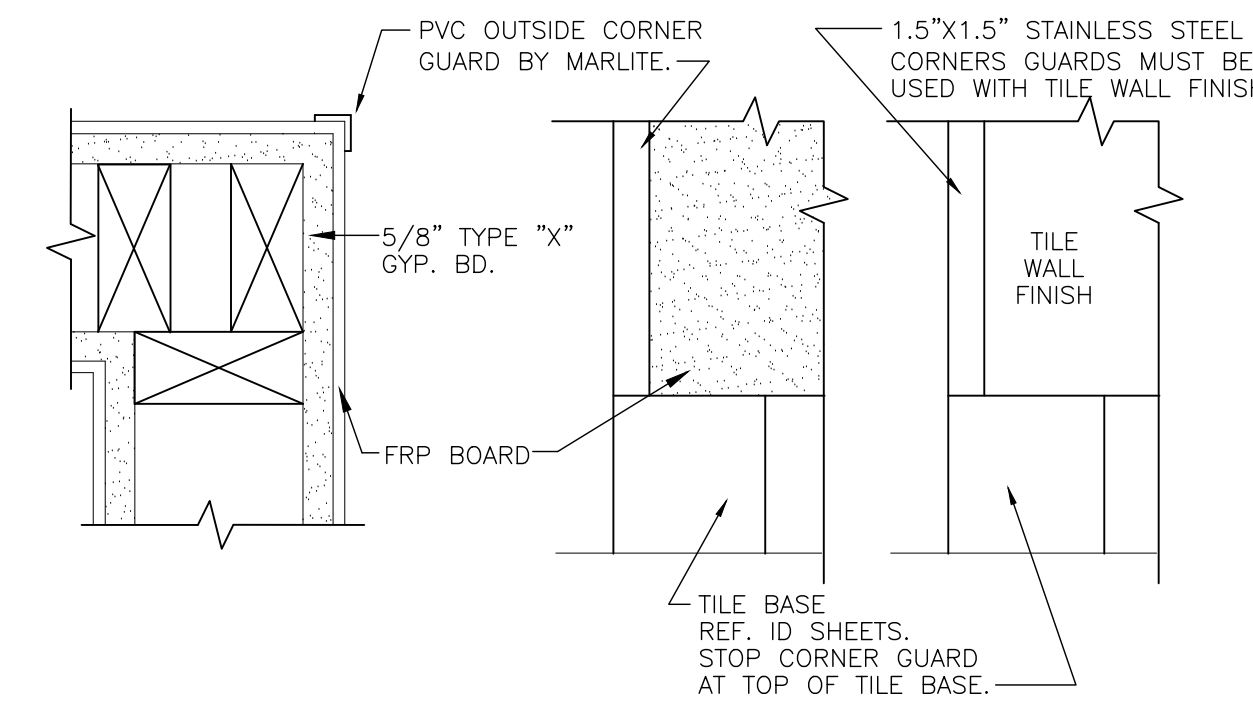
1 PLAN DETAIL
SCALE: 1-1/2" = 1'-0"



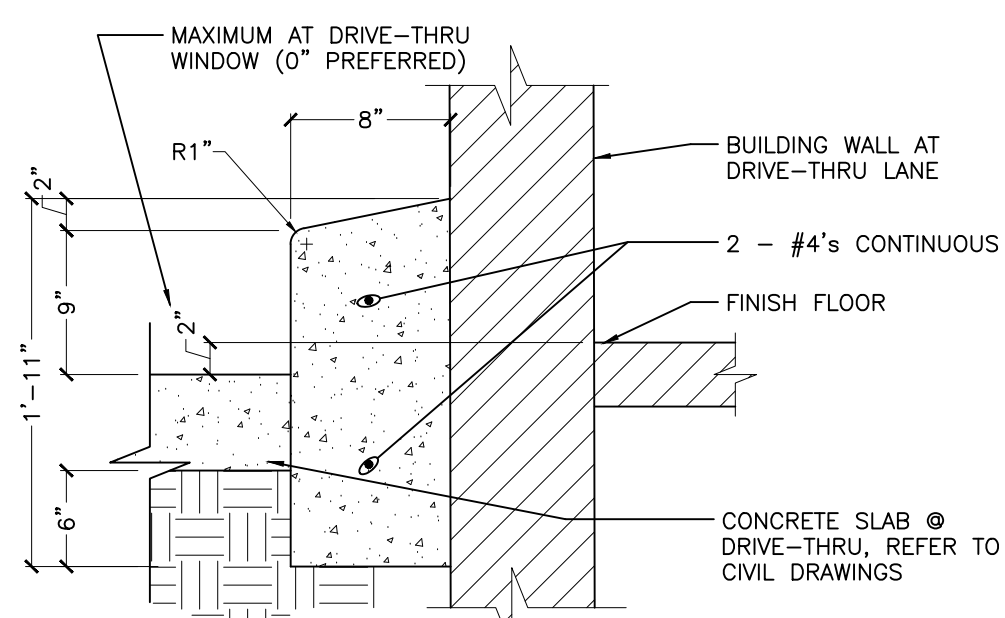
2 PLAN DETAIL
SCALE: 1-1/2" = 1'-0"



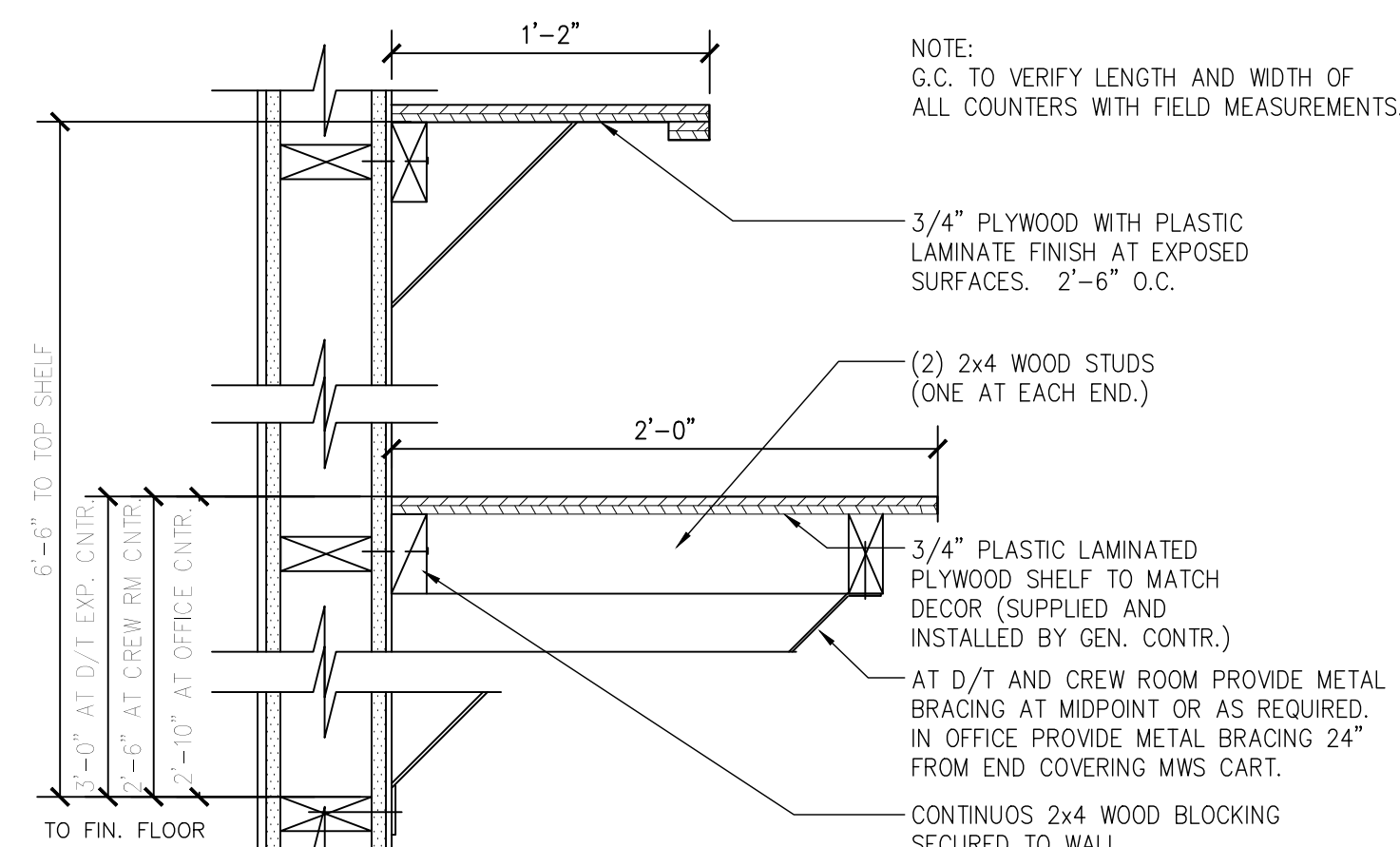
3 TYPICAL INTERIOR PARTITION
SCALE: 1-1/2" = 1'-0"



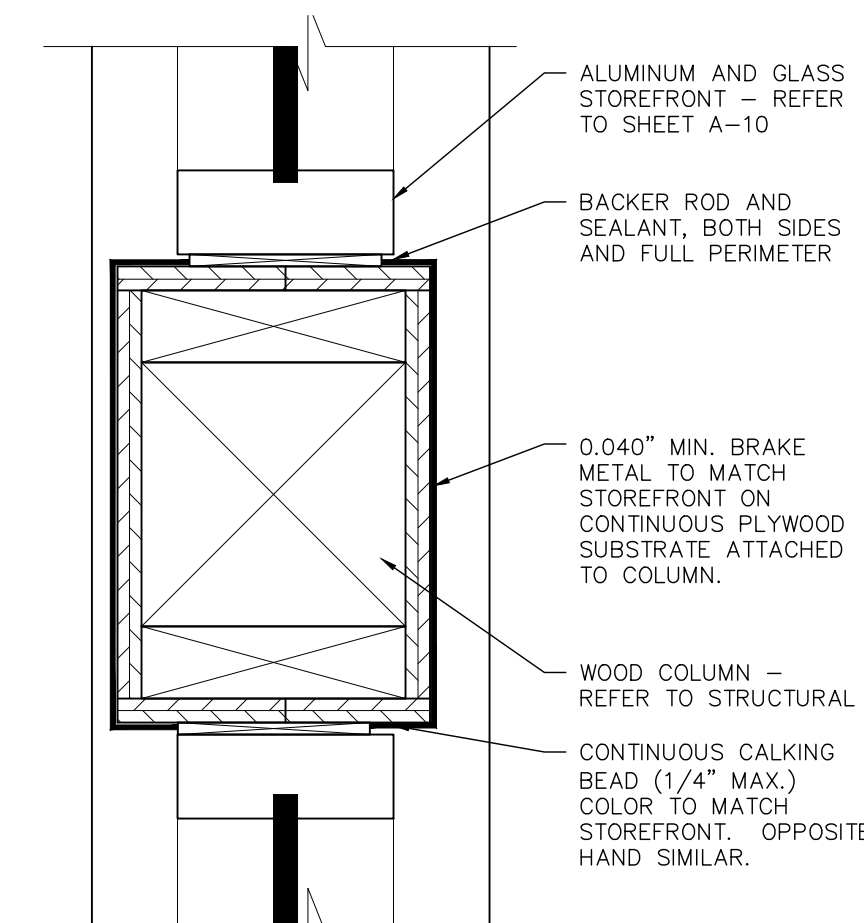
4 CORNER GUARD DETAIL
SCALE: 1-1/2" = 1'-0"



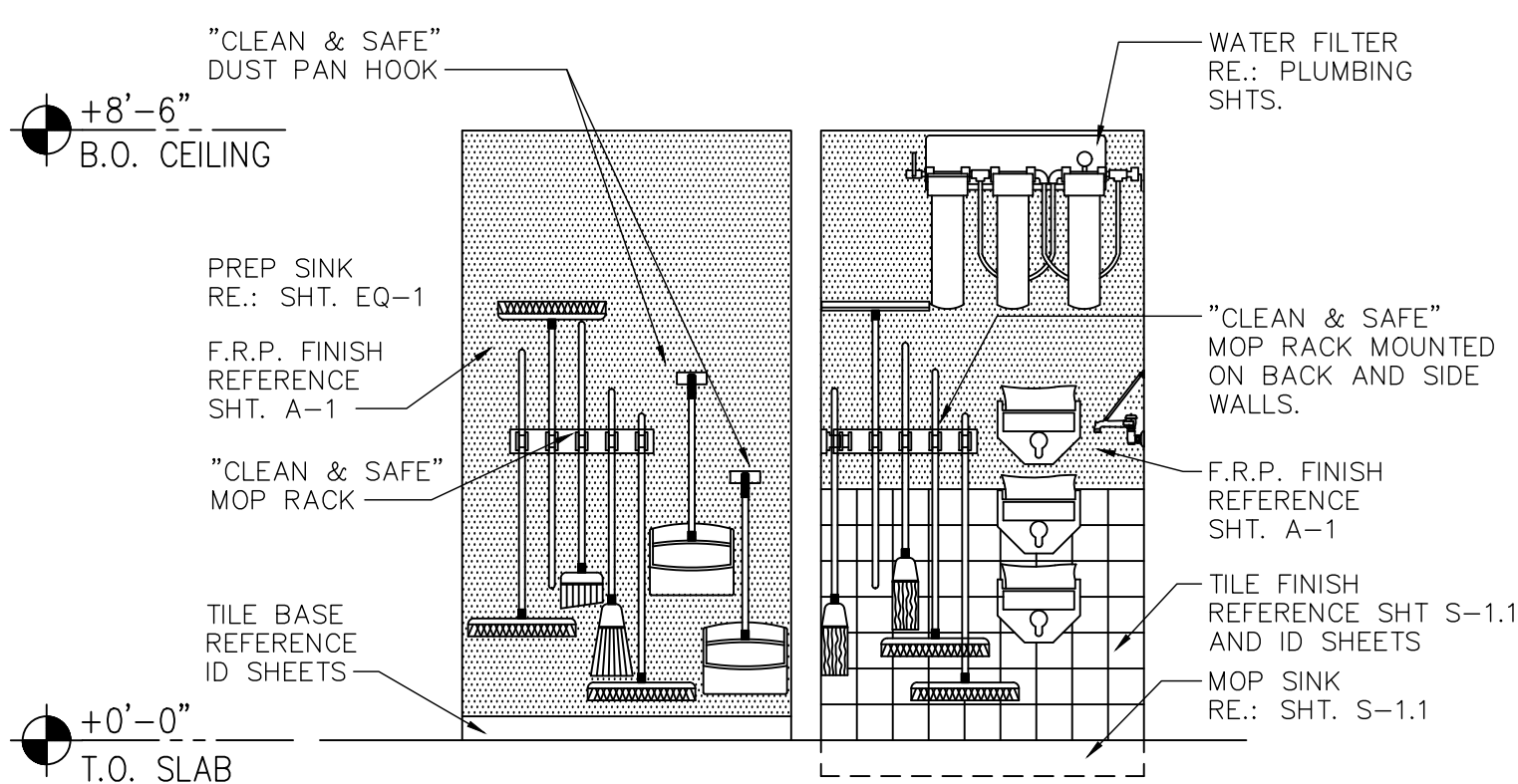
5 BARRIER CURB DETAIL
SCALE: 1" = 1'-0"



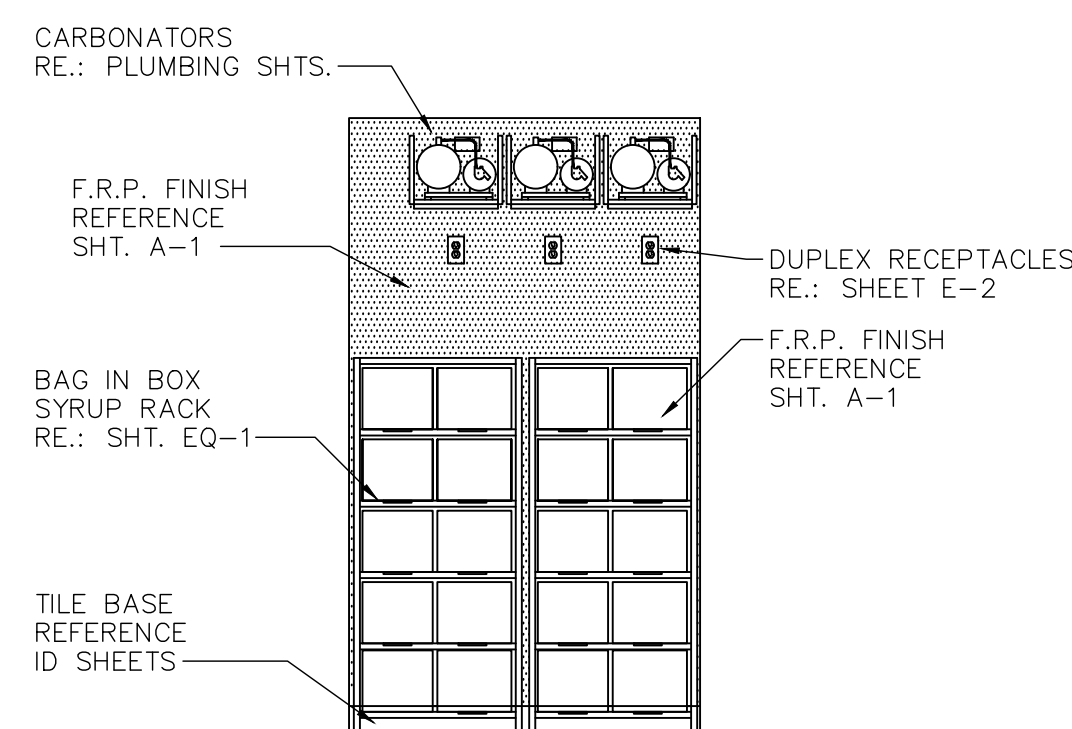
6 OFFICE COUNTER DETAIL
SCALE: 1-1/2" = 1'-0"



**7 COLUMN
BRAKE METAL ENCLOSURE**
SCALE: 3" = 1'-0"



A ELEVATION
SCALE: 3/8" = 1'-0"



B ELEVATION
SCALE: 3/8" = 1'-0"

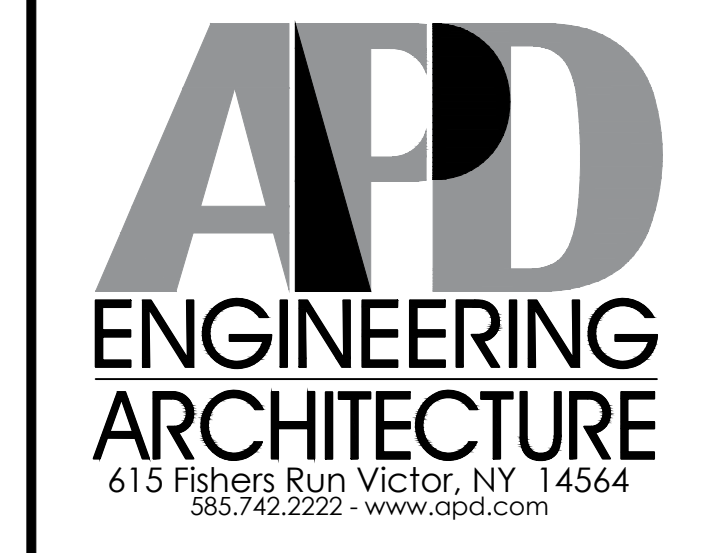
Issued:	Date:
A BKC Approval	10/29/2021
B Permit Set	1/28/2022
C Bid Set	4/25/2022
D	
E	
Revisions:	Date:
1	
2	
3	
4	
5	
6	
7	
8	
9	

Seal	Seal
PROJECT ARCHITECT/ENGINEER	DATE
PROJECT LEAD	DATE
PROJECT DESIGNER	DATE

Copyright ©2022
APD Engineering & Architecture, LLC

Drawing Alteration
It is a violation of law for any person, unless acting under the direction of
licensed Architect, Professional Engineer, Landscape Architect, or Land
Surveyor to alter any item on this document in any way. Any licensee
who alters this document is required by law to affix his or her seal and to
add the notation "Altered By" followed by his or her signature and the
specific description of the alteration or revision.

[DO NOT SCALE PLANS]
Copying, Printing, Software and other processes required to produce
these prints can stretch or shrink the actual paper or layout. Therefore,
scaling of this drawing may be inaccurate. Contact APD E&A with any
need for additional dimensions or clarifications.



Burger King Inc.
Store # 30011
108 Egg Harbor Road
Sewell, NJ 08080
Gloucester County
Project Name & Location:

Details	
Drawing Name:	Project No.
Date: 11/8/2021	21-0458
Type: BK ROC-60	
Drawn By: ICP	A-1.1
Scale: As Noted	Drawing No.