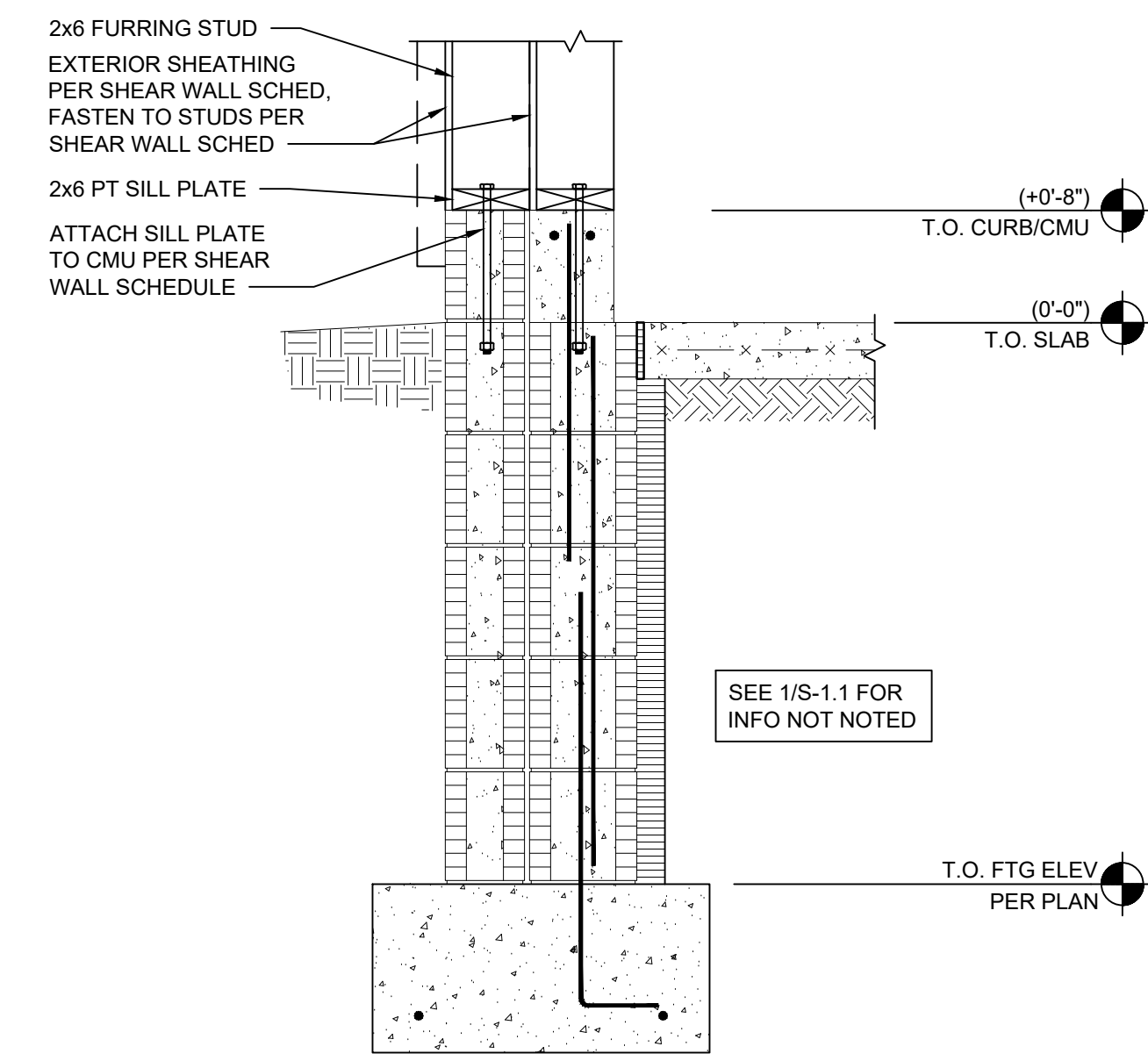
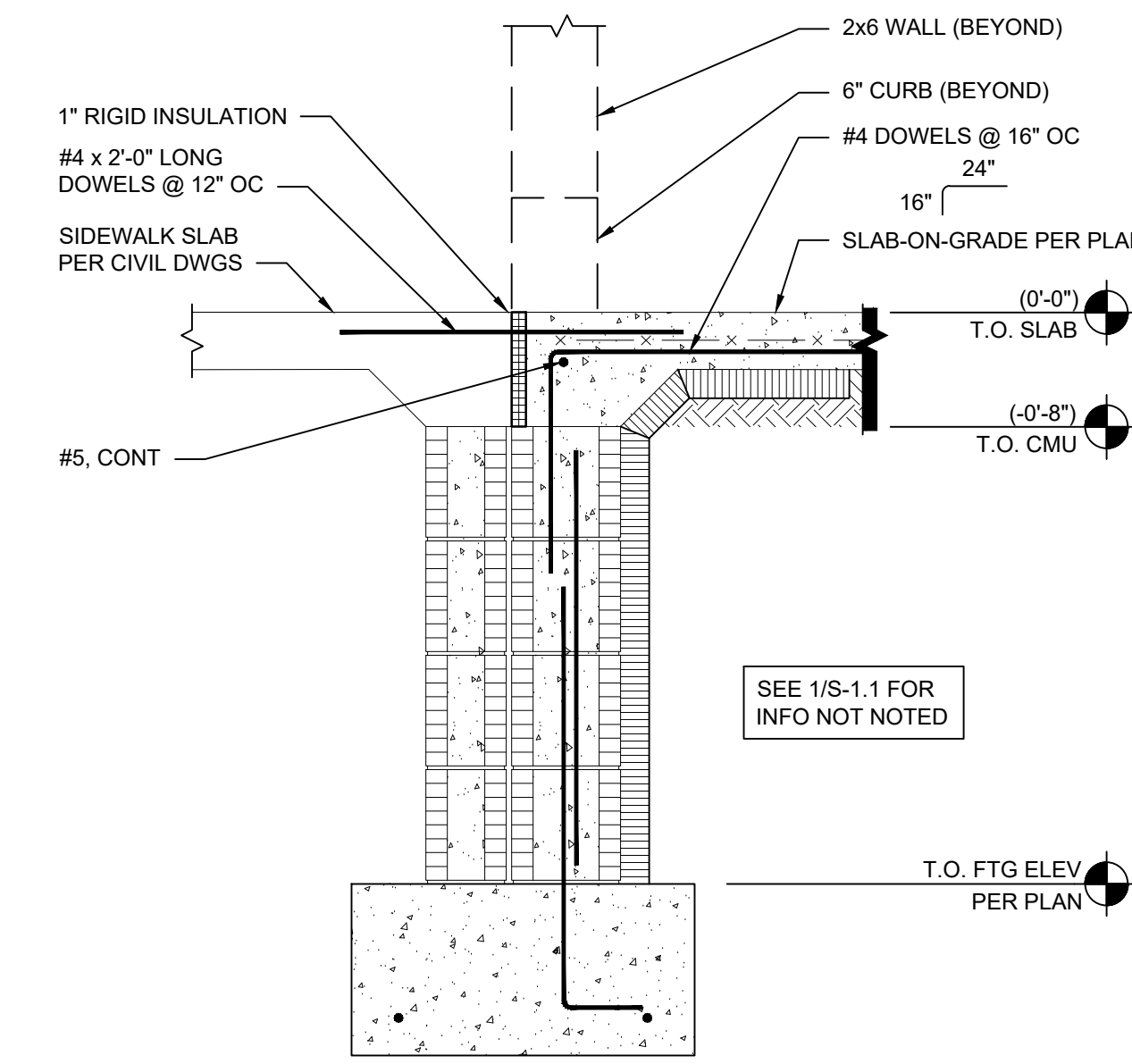


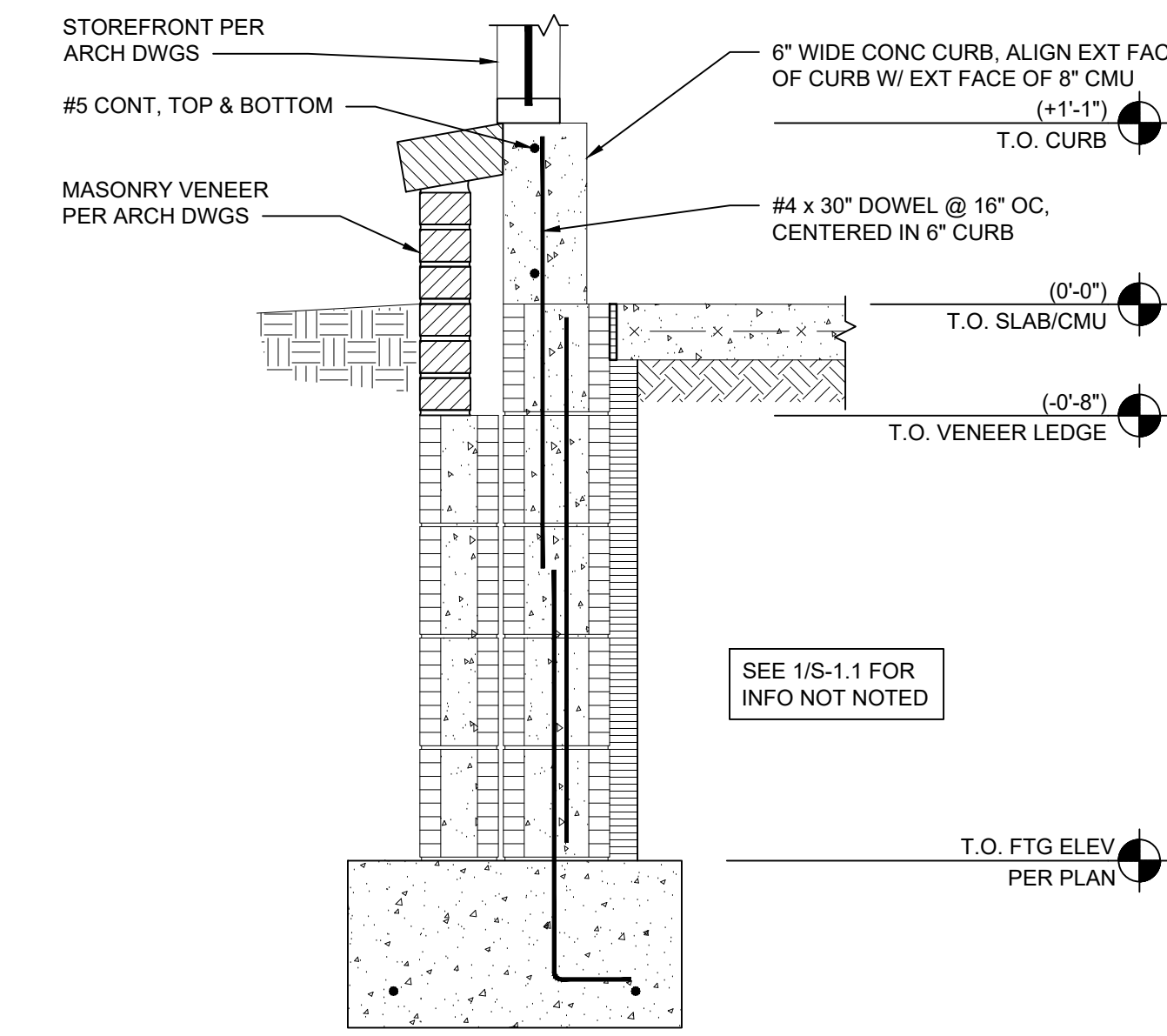
1 Typical Foundation Wall Section  
SCALE: 1" = 1'-0"



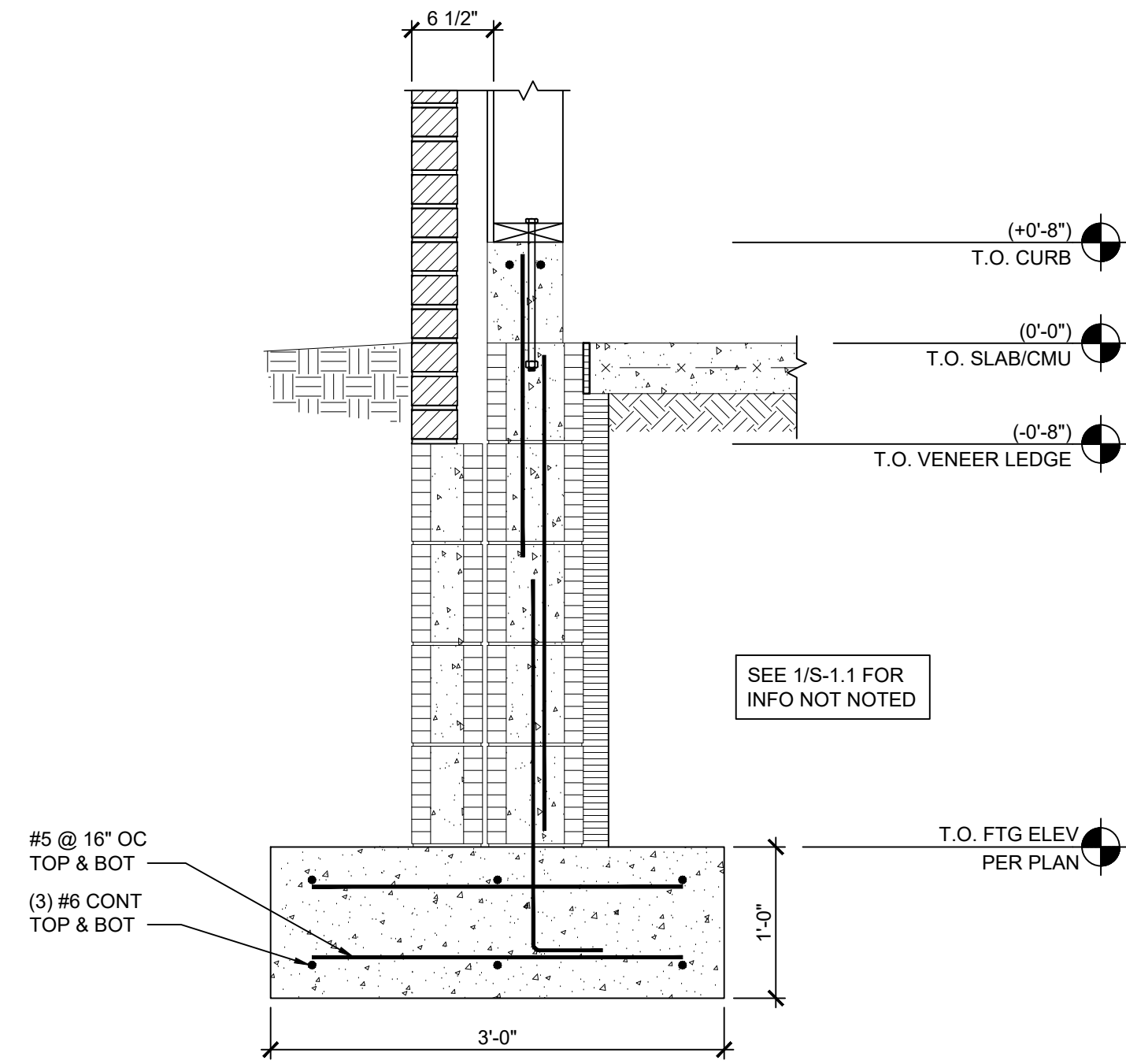
2 Typical Furring Section  
SCALE: 1" = 1'-0"



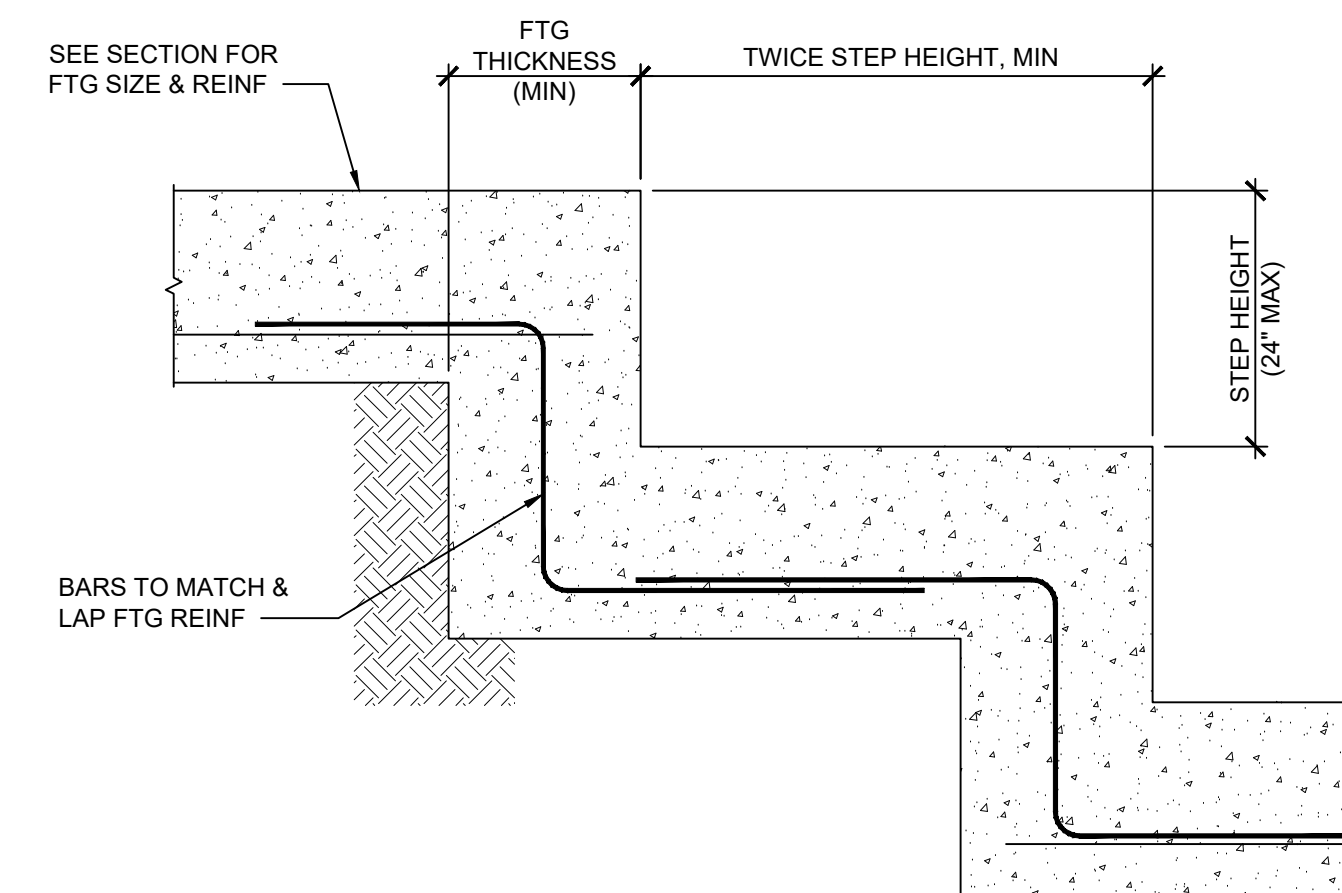
3 Typical Door Section  
SCALE: 1" = 1'-0"



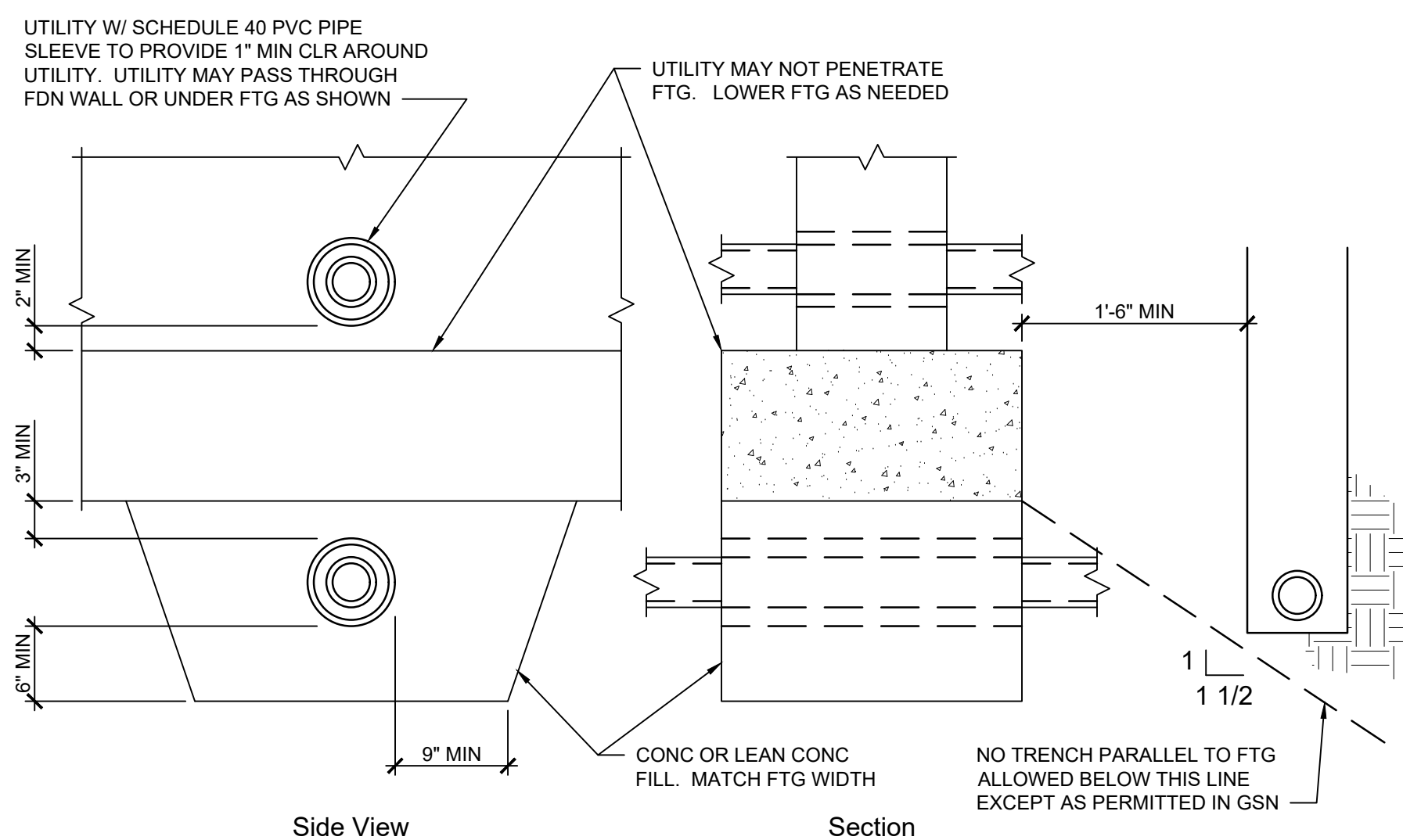
4 Typical Storefront Section  
SCALE: 1" = 1'-0"



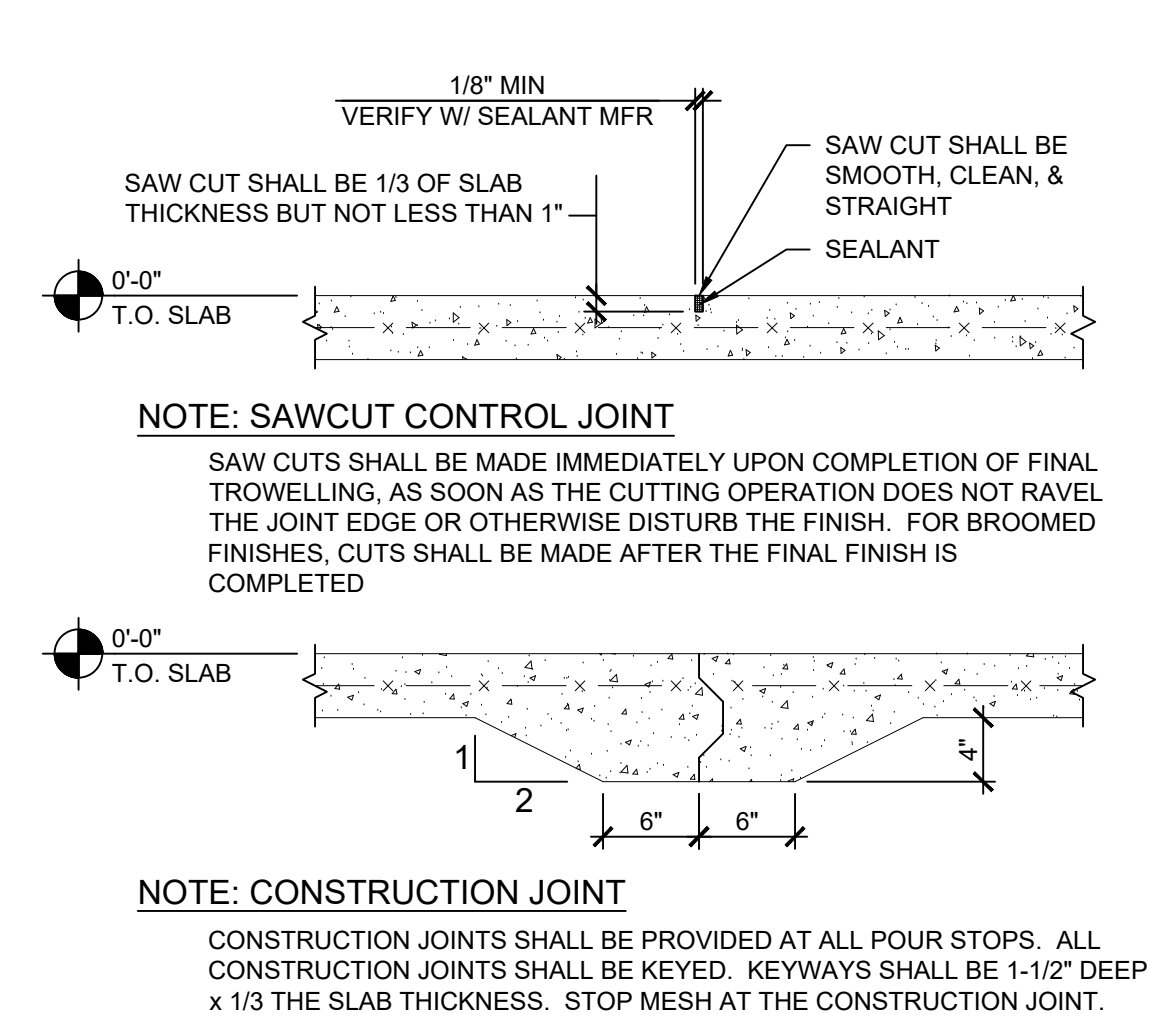
5 Section at Rear Wall  
SCALE: 1" = 1'-0"



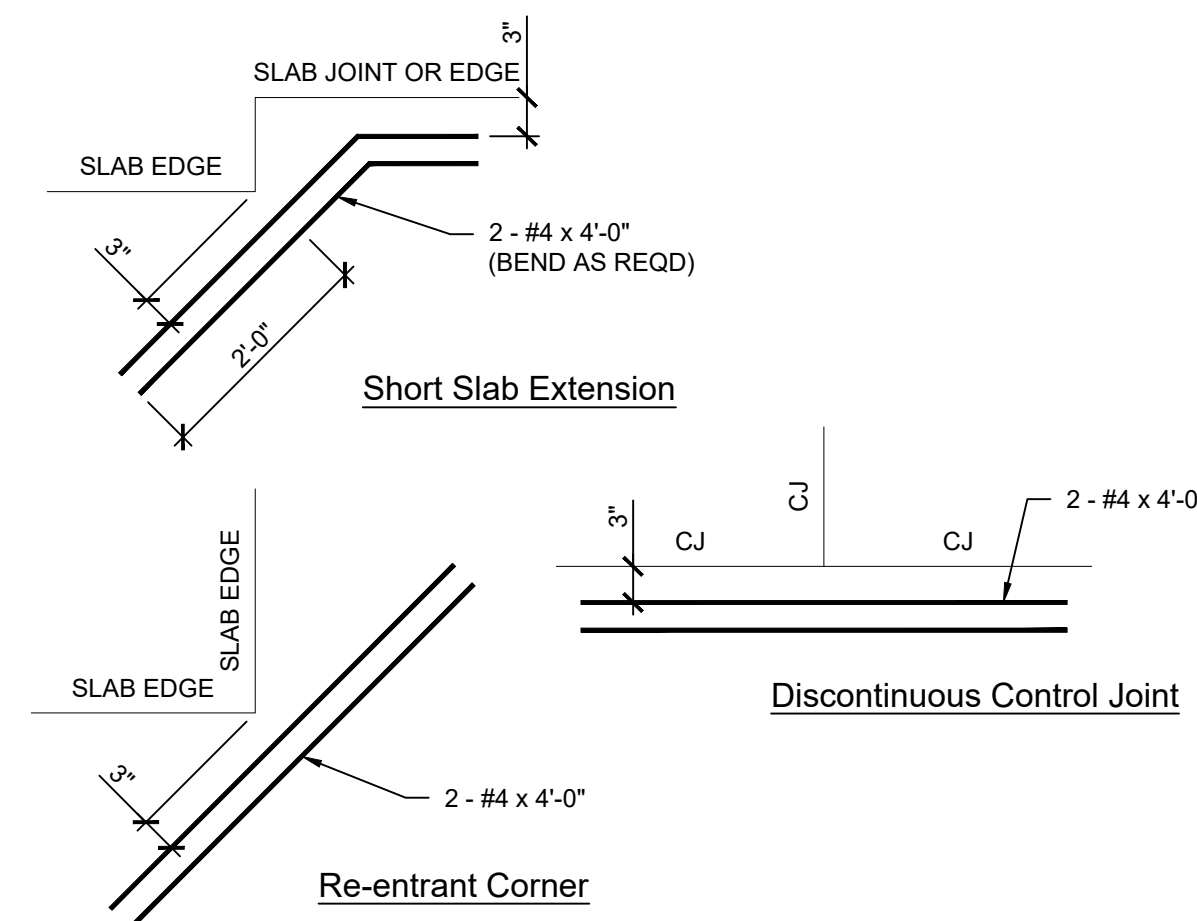
8 Typical Step Footing Detail  
SCALE: 1" = 1'-0"



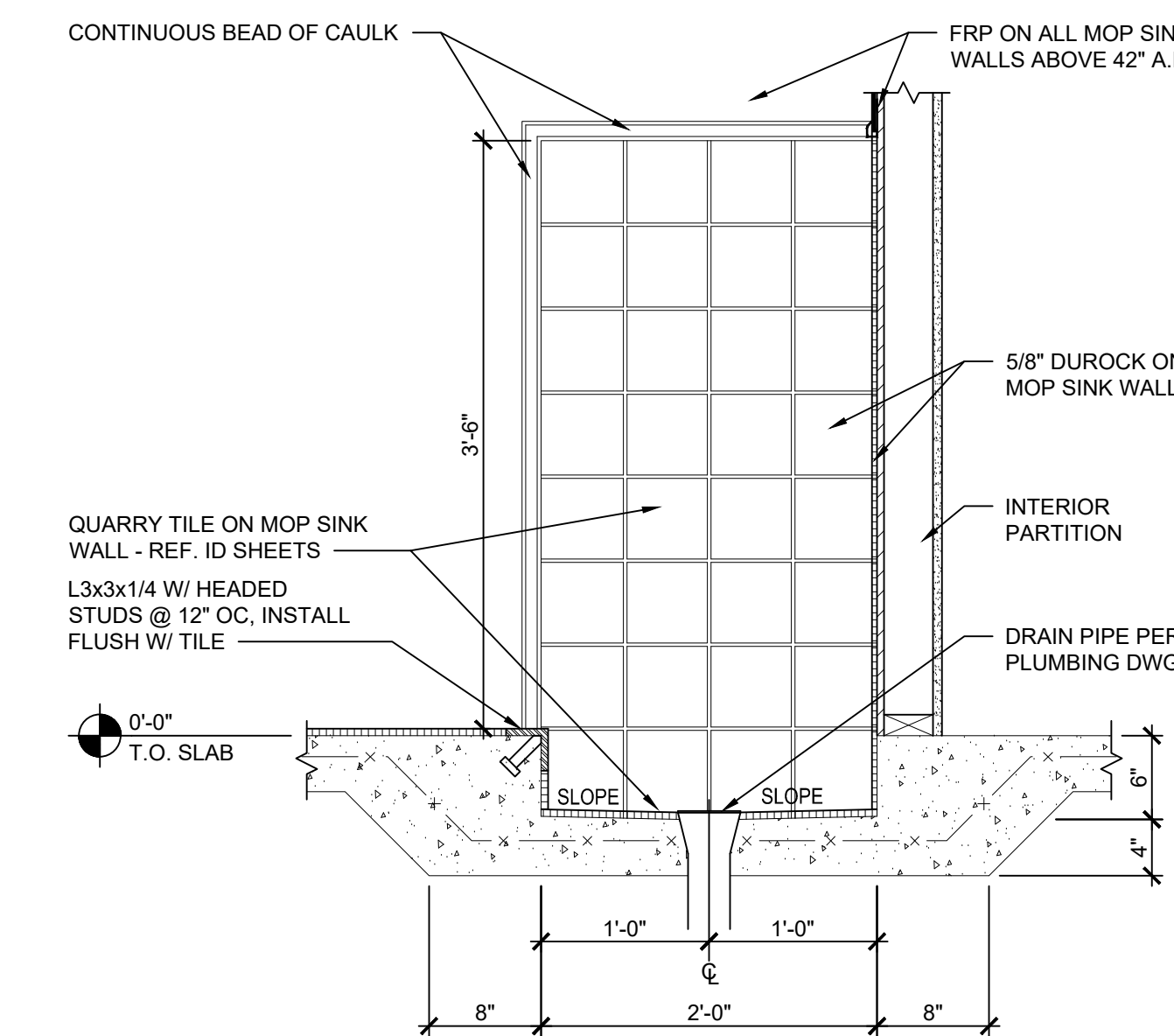
9 Typical Utility Detail at Continuous Footing  
SCALE: 1" = 1'-0"



10 Typical Joint Details for Slabs-on-Grade  
SCALE: 1" = 1'-0"



11 Supplemental Slab-on-Grade Reinforcement  
SCALE: 1" = 1'-0"



12 Section at Mop Sink  
SCALE: 1" = 1'-0"

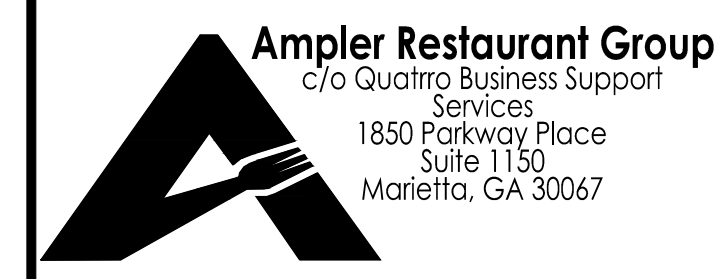
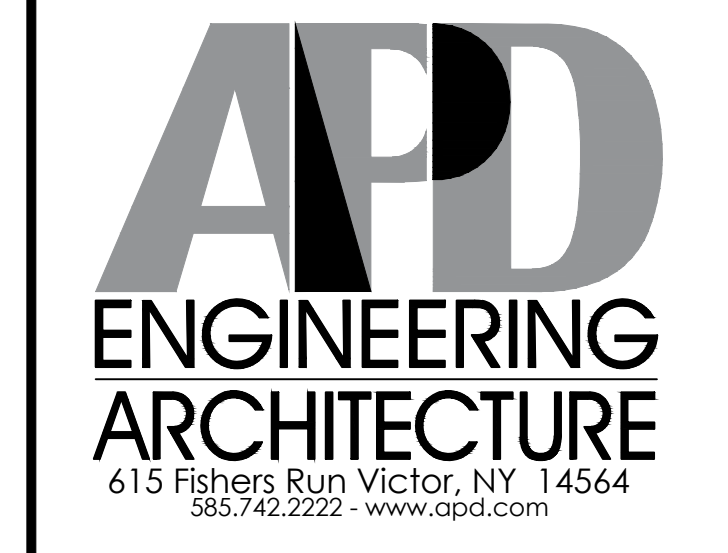
Issued:	Date:
A BKC Approval	10/29/2021
B Permit Set	1/28/2022
C Bid Set	4/25/2022
D	
E	

Revisions:	Date:
1	
2	
3	
4	
5	
6	
7	
8	
9	

Seal	Seal	DATE
PROJECT ARCHITECT/ENGINEER		
PROJECT LEAD		DATE
PROJECT DESIGNER		DATE

Copyright © 2022  
APD Engineering & Architecture, LLC  
Drawing Alteration  
It is a violation of law for any person, unless acting under the direction of licensed Architect, Professional Engineer, Landscape Architect, or Land Surveyor to alter any item on this document in any way. Any licensee who alters this document is required by law to affix his or her seal and to add the notation "Altered By" followed by his or her signature and the specific description of the alteration or revision.  
DO NOT SCALE PLANS  
Copying, Printing, Software and other processes required to produce these prints can stretch or shrink the actual paper or layout. Therefore, scaling of this drawing may be inaccurate. Contact APD E&A with any need for additional dimensions or clarifications.



Burger King Inc.  
Store # 30011  
108 Egg Harbor Road  
Sewell, NJ 08080  
Gloucester County  
Project Name & Location:

Foundation Details	
Drawing Name:	Project No.
Date: 11/8/2021	21-0458
Type: BK ROC-60	
Drawn By: SJF	S-1.1
Scale: As Noted	Drawing No.