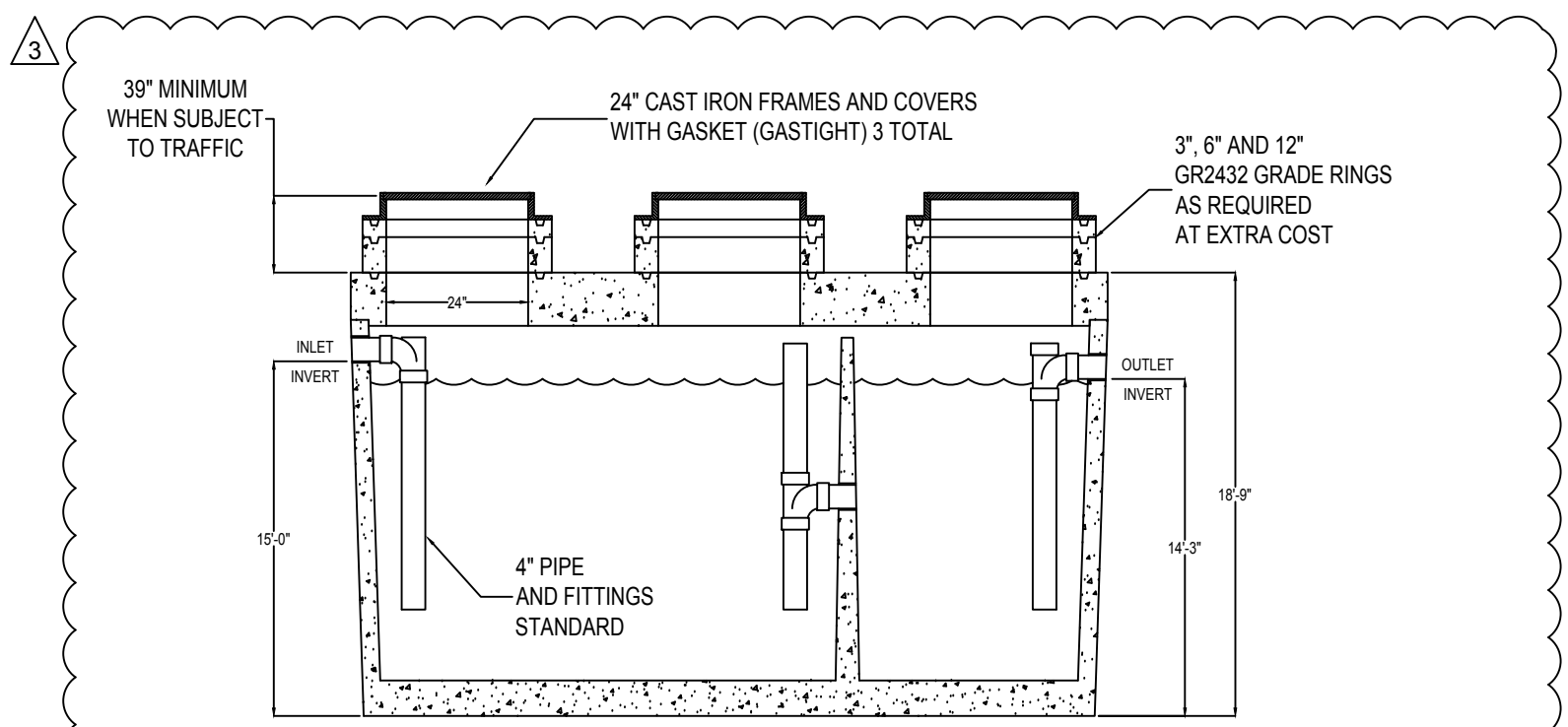


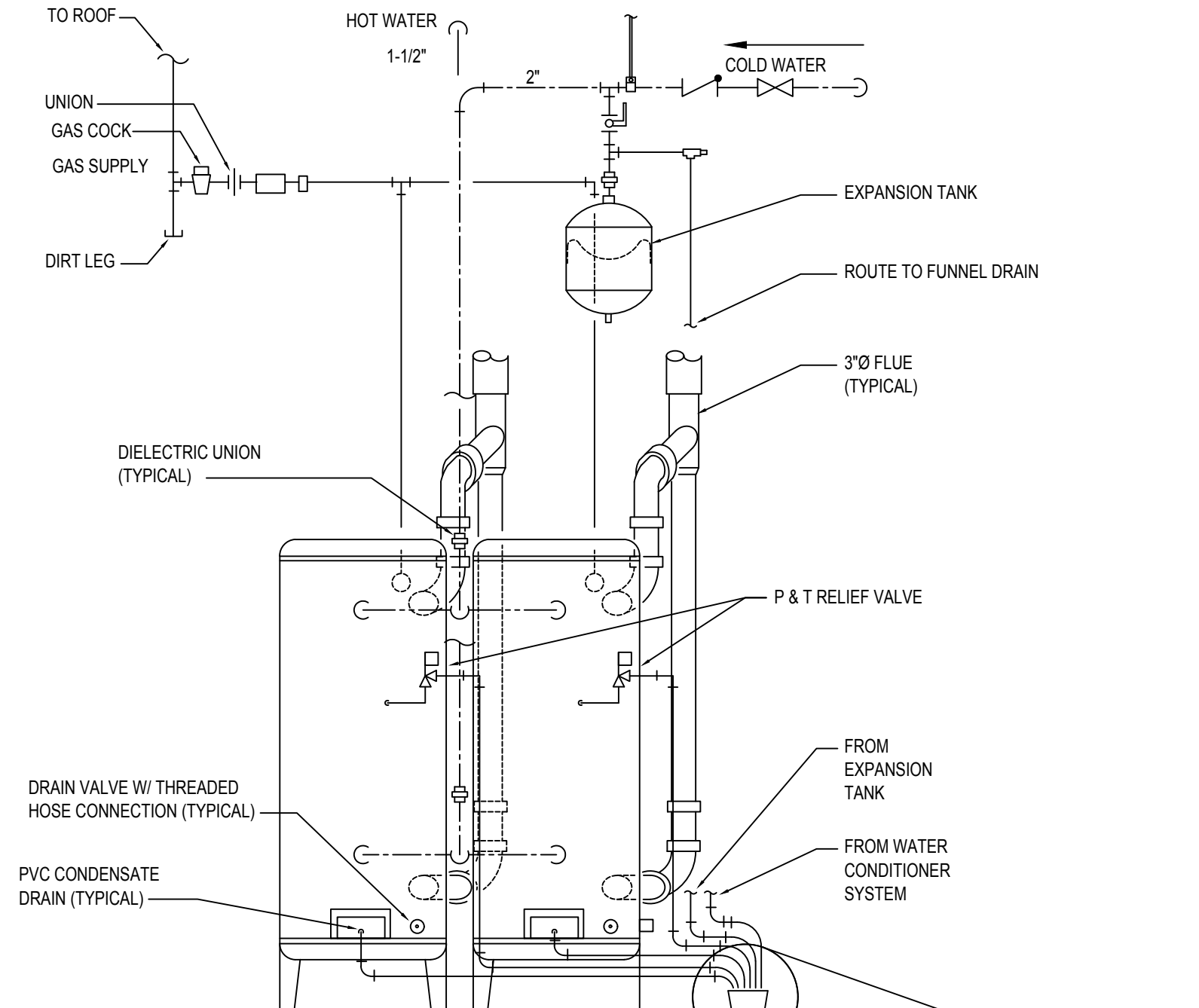
REFER TO PLANS FOR VTR PIPE SIZES AND LOCATIONS. LOCATE VTR MINIMUM THREE FEET FROM PROPERTY LINE, OR TEN FEET HORIZONTAL OR THREE FEET VERTICAL ABOVE ANY BUILDING OPENING OR FRESH AIR INTAKE, OR ONE FOOT FROM ANY VERTICAL SURFACE. LOCATE VTR MINIMUM FROM PARAPET, EXPANSION JOINT, EQUIPMENT CURB, ETC. OFFSET IN CEILING SPACE WHERE REQUIRED TO MEET THESE CONDITIONS.

**2 VENT THRU ROOF (VTR)**  
P3.1 N.T.S.

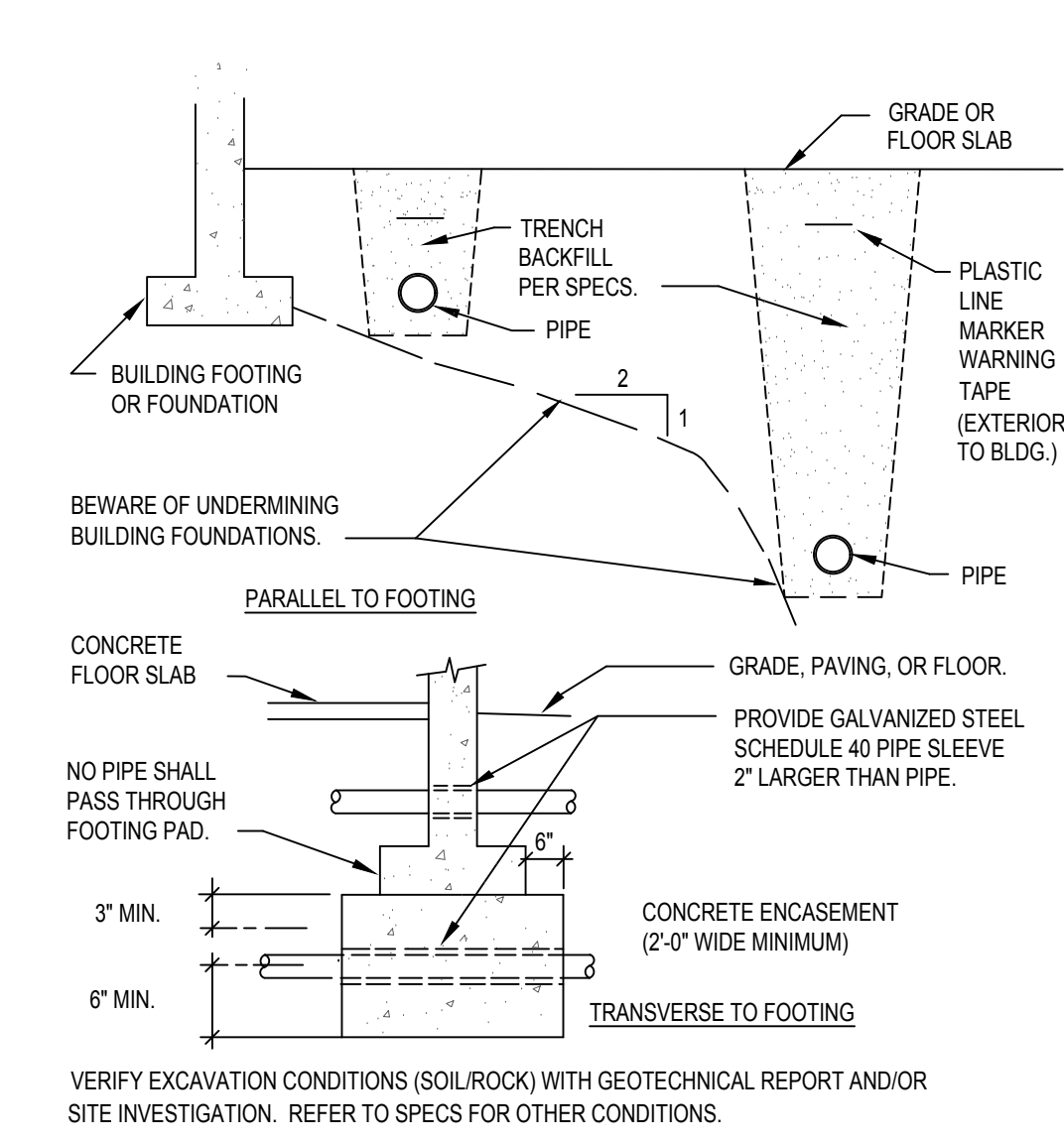


OPERATING CAPACITY: 1,500 GALLONS. (1,500 OR LARGER TANKS ARE REQUIRED BY THE CITY OF SAN DIEGO.)  
DESIGN LOAD: H-20 TRAFFIC WITH DRY SOIL CONDITIONS (WATER LEVEL BELOW TANK) AND 13 INCHES TO 6 FEET EARTH COVER.  
SUITABLE SUB-BASE BEDDED WITH GRANULAR MATERIAL SHALL BE PREPARED TO HANDLE ANTICIPATED LOADS.  
FOR COMPLETE DESIGN AND PRODUCT INFORMATION CONTACT JENSEN PRECAST.

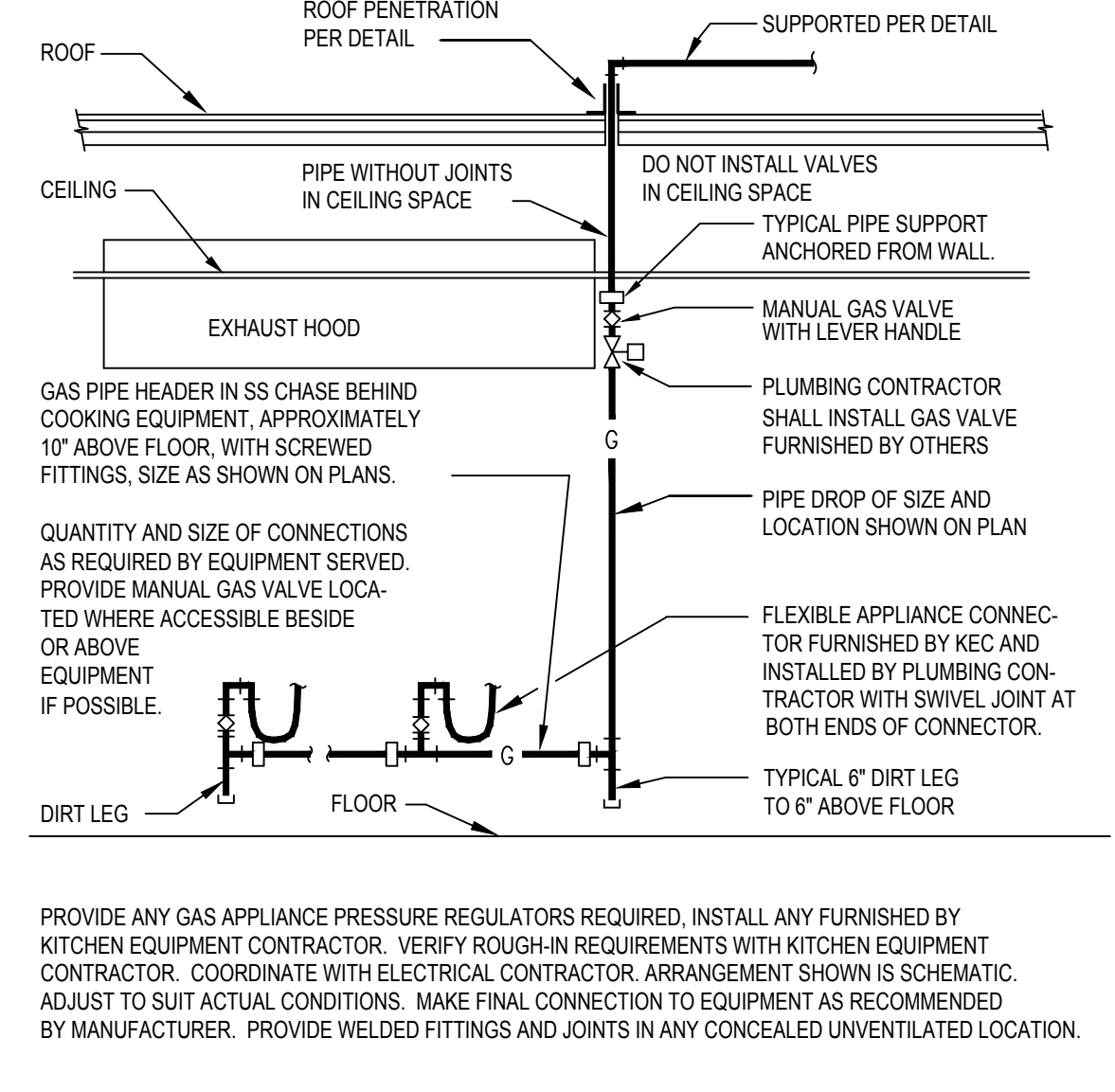
**14 1500 GALLON GREASE TRAP**  
P3.1 N.T.S.



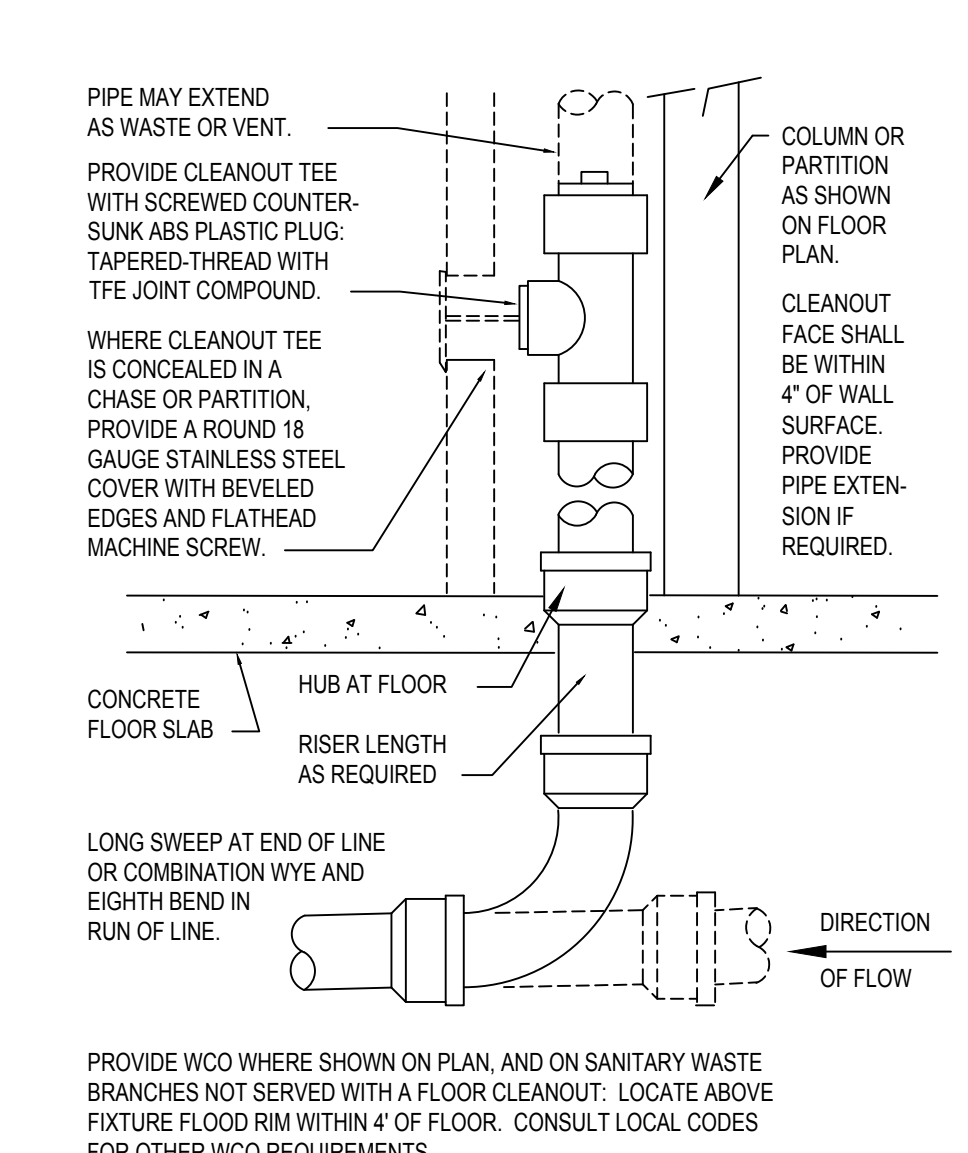
**1 WATER HEATER DETAIL**  
P3.1 N.T.S. (WH-1 & WH-2)



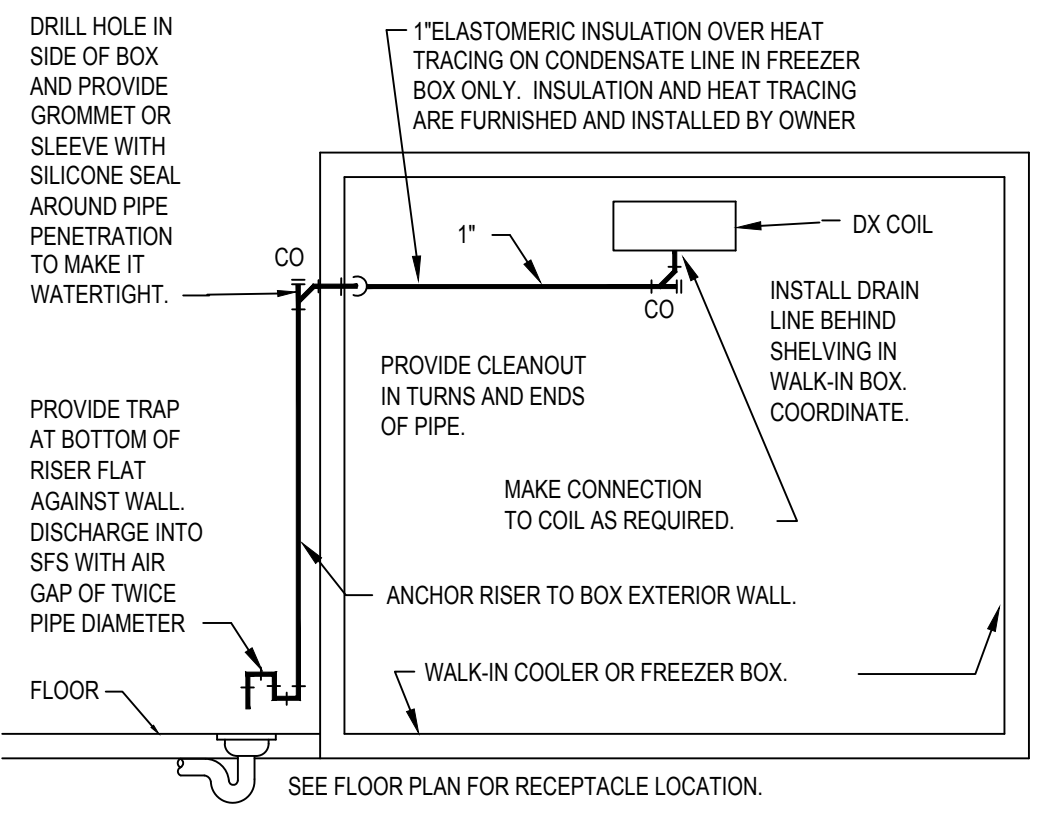
**5 PIPE AND TRENCH LOCATION**  
P3.1 N.T.S.



**6 COOKING APPLIANCE GAS PIPE**  
P3.1 N.T.S.

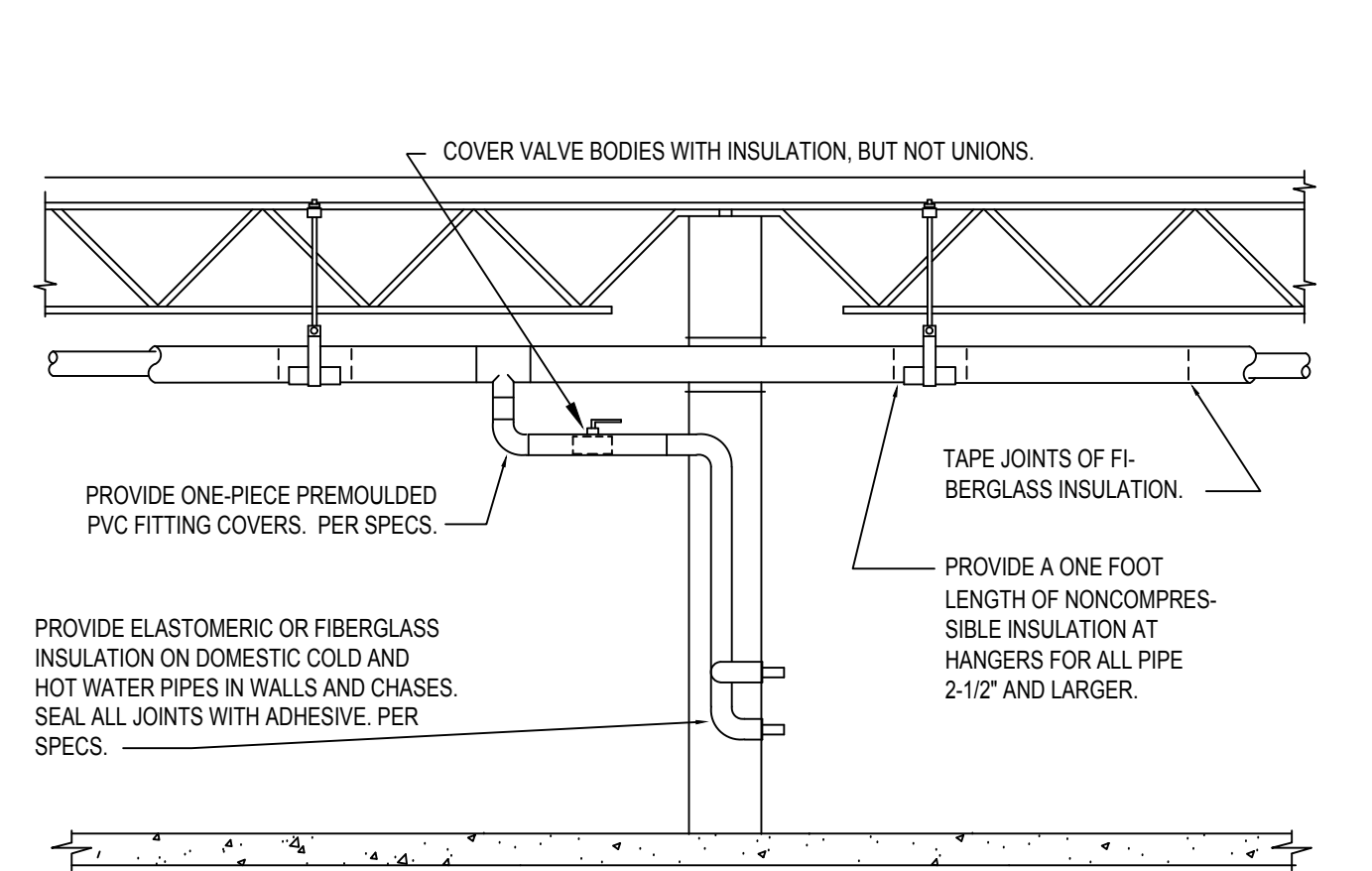


**8 NON-FREEZE WALL HYDRANT**  
P3.1 N.T.S.

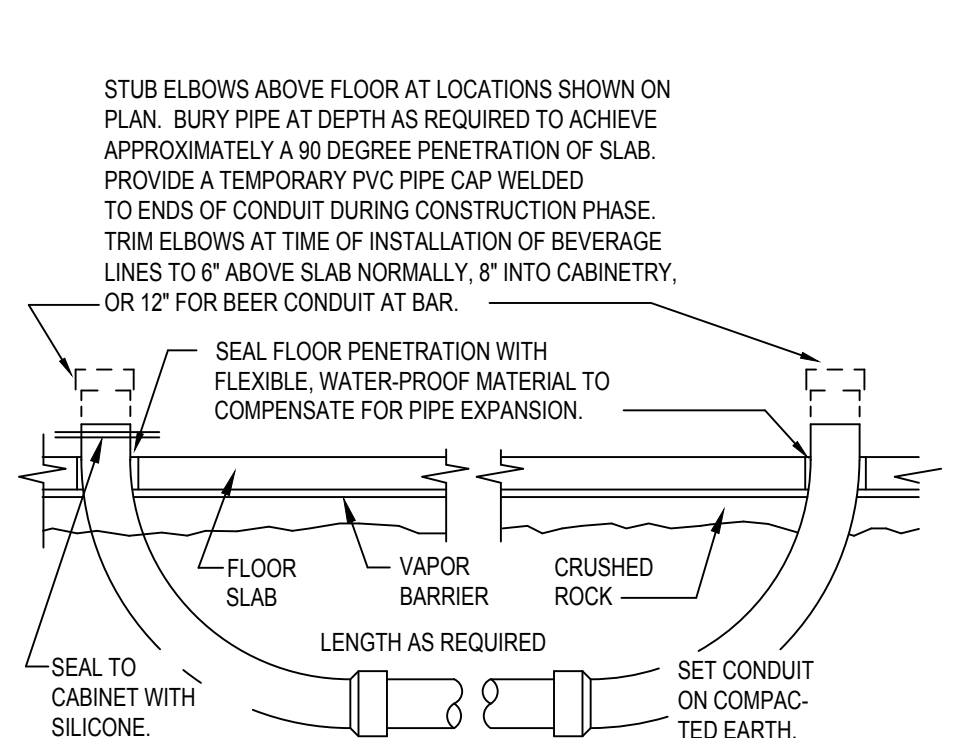


INSTALL PIPE HIGH AS POSSIBLE, ANCHORED TO WALL OF BOX WITH SUPPORTS AT MAXIMUM SIX FOOT CENTERS. USE TYPE "M" HARD COPPER TUBE AND FITTINGS WITH LEAD-FREE SOLDER JOINTS. SLOPE HORIZONTAL PIPE AT MINIMUM TWO PERCENT. PROVIDE CHROMATONE PAINT ON PIPE EXTERIOR TO BOX. REFER TO "INDIRECT DRAIN" DETAIL FOR OTHER REQUIREMENTS.

**10 WALK-IN BOX CONDENSATE DRAIN**  
P3.1 N.T.S.

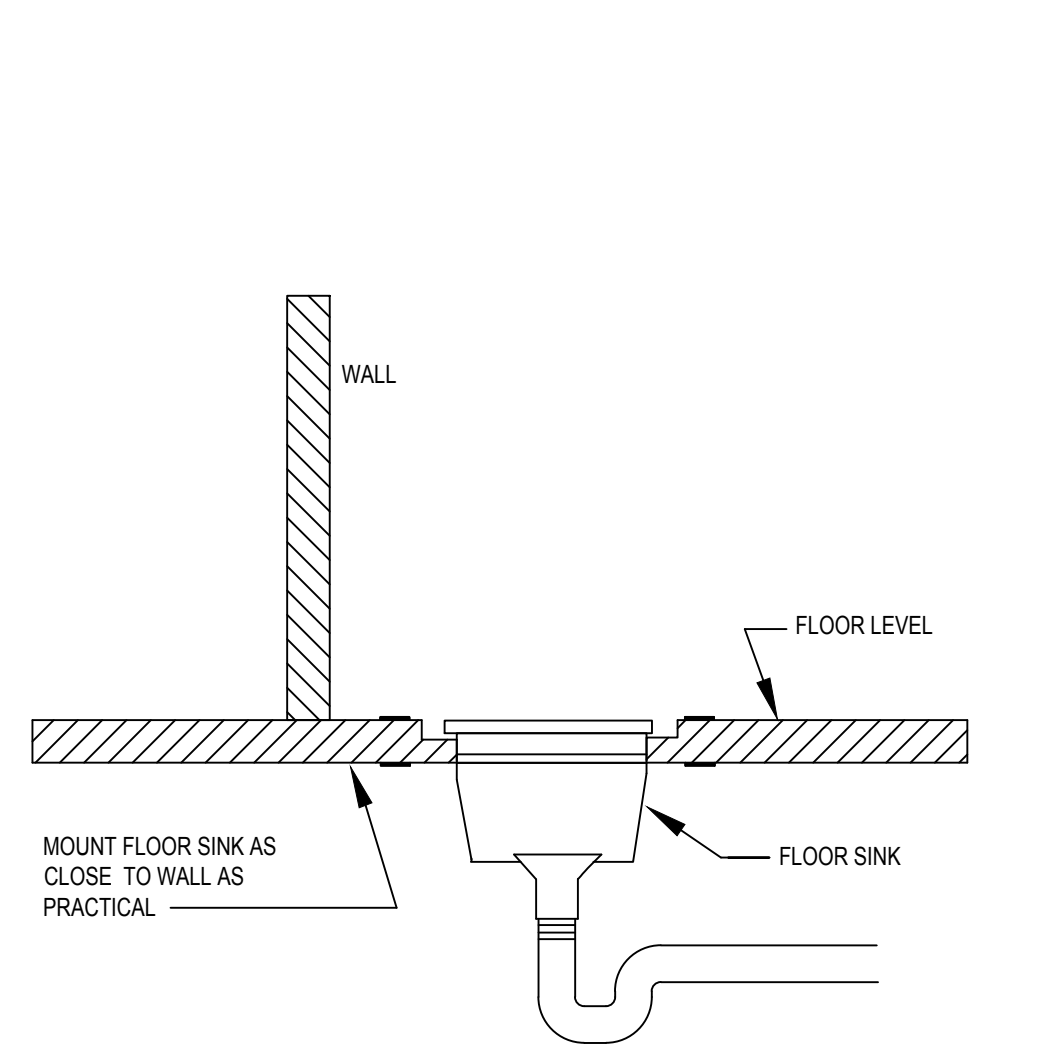


**11 PIPE INSULATION**  
P3.1 N.T.S.

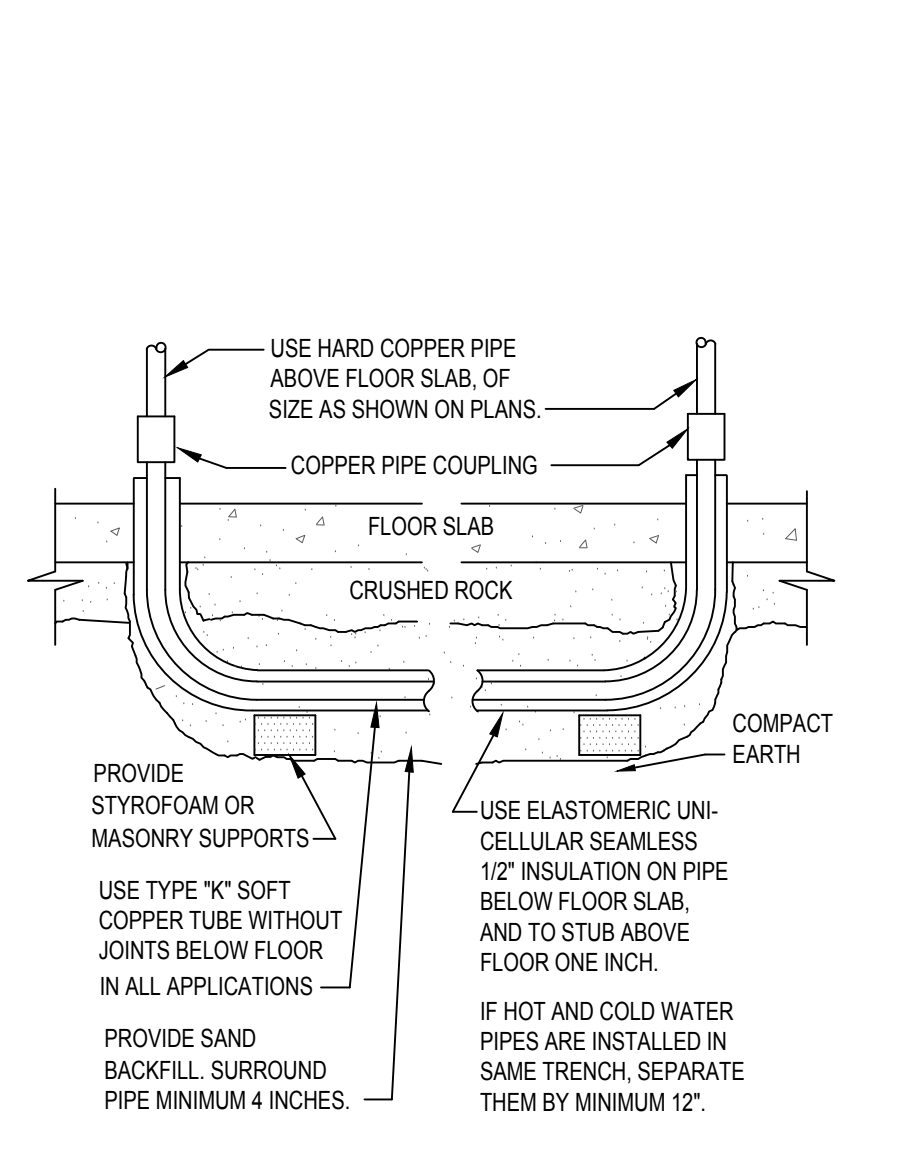


USE SIX INCH SCHEDULE 40 PVC ELECTRICAL CONDUIT AND FITTINGS WITH SOLVENT-WELDED JOINTS. USE MINIMUM QUANTITY OF FITTINGS REQUIRED. PROVIDE LONG SWEEP ELBOWS AT BOTH ENDS, WITH MINIMUM 24 INCH RADIUS (AVAILABLE AS ELECTRICAL CONDUIT - DO NOT USE MULTIPLE ELBOWS TO MAKE 90° TURNS). PROVIDE TEST OF CONDUIT AFTER ASSEMBLY TO VERIFY WATERTIGHTNESS. REPAIR LEAKS BEFORE BACKFILLING TRENCH WITH SAND. MAINTAIN PRESSURE UNTIL BEVERAGE LINES ARE INSTALLED. AVOID ELBOWS IN HORIZONTAL RUN IF AT ALL POSSIBLE. BEVERAGE SUPPLIER WILL SEAL ENDS OF CONDUIT WITH FOAM AFTER BEVERAGE LINES ARE INSTALLED IN CONDUIT.

**12 PVC BEVERAGE CONDUIT**  
P3.1 N.T.S.

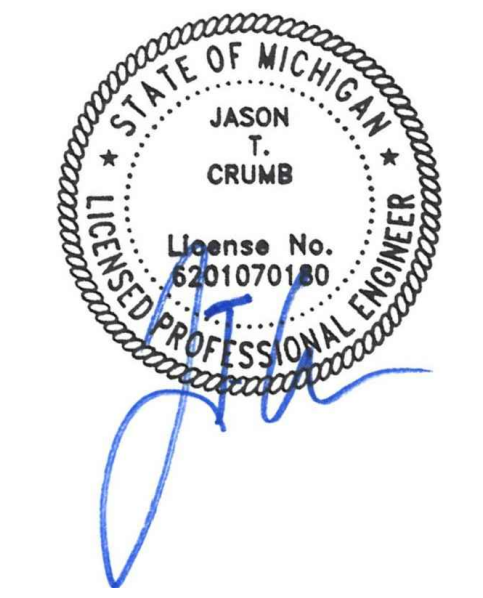


**13 FLOOR SINK DETAIL**  
P3.1 N.T.S.



**14 WATER PIPE UNDER SLAB**  
P3.1 N.T.S.

**PLUMBING SCHEDULES AND DETAILS**  
P3.1 NO SCALE



REVISIONS	PROJECT NO:
NO. DATE	IA 2119
1 1-4-22	SHEET
2 1-25-22	P3.1
3 2-28-22	