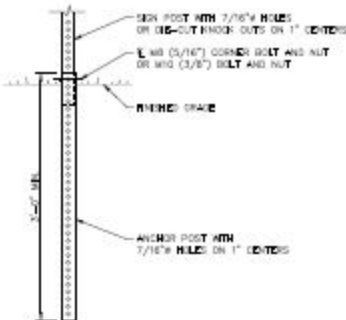


PROP  
ADDI  
10' V



STOP SIGN SHALL BE TO PA DOT SPEC 307-307.00 STANDARDS

### BRIDGE



### INSTALLATION DETAIL STOP SIGN & POST

NOT TO SCALE

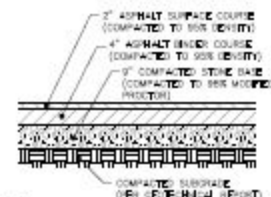
MATERIALS AND WORKMANSHIP SHALL BE IN ACCORDANCE WITH PDOT SPEC 307-307.00  
SIGN POSTS AND BRIDGE SIGNS SHALL HAVE 7/16" DIAMETER NUTS ON 1" CENTERS ON ALL FOUR SIDES. ANCHOR POSTS AND ANCHOR SLICES SHALL HAVE 7/16" DIAMETER NUTS ON 1" CENTERS ON ALL FOUR SIDES.  
BOLTS AND NUTS SHALL BE WITH A 307, GRADE II  
DRIVE NUTS MAY BE USED TO FASTEN SIGN SLABS TO THE SIGN POST

### LEAST TRAFFICED DRIVE ISLE



### FREE AIR CONCRETE PAD LAYOUT

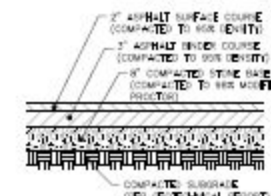
NOT TO SCALE



NOTE:  
1. SEE TO MEET OR EXCEED LOCAL AGENCY REQUIREMENTS FOR SPECIAL REQUIREMENTS. THE THICKNESS OF EACH COURSE SHALL BE AS SHOWN UNLESS OTHERWISE SPECIFIED.  
2. PROTECT ALL EXPOSED SURFACES TO PREVENT WEAR AND DISCOLORATION. USE A PROTECTIVE COATING OR POLYURETHANE SEALER AS APPROVED BY THE LOCAL AGENCY.  
3. VERIFY WITH LOCAL AGENCY FOR ANY MODIFIED REQUIREMENTS.  
4. USE 1/2 INCH DEPTH JOINTS ACCORDING TO THE STRUCTURE.

### HEAVY DUTY ASPHALT PAVEMENT SECTION

NOT TO SCALE



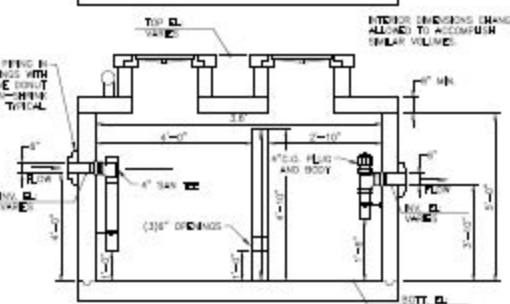
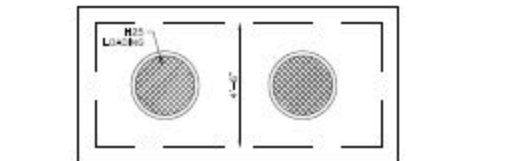
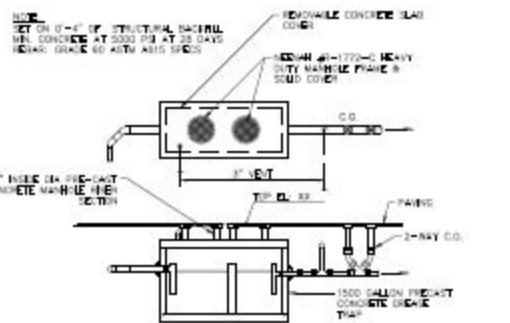
NOTE:  
1. SEE TO MEET OR EXCEED LOCAL AGENCY REQUIREMENTS FOR SPECIAL REQUIREMENTS. THE THICKNESS OF EACH COURSE SHALL BE AS SHOWN UNLESS OTHERWISE SPECIFIED.  
2. PROTECT ALL EXPOSED SURFACES TO PREVENT WEAR AND DISCOLORATION. USE A PROTECTIVE COATING OR POLYURETHANE SEALER AS APPROVED BY THE LOCAL AGENCY.  
3. VERIFY WITH LOCAL AGENCY FOR ANY MODIFIED REQUIREMENTS.  
4. USE 1/2 INCH DEPTH JOINTS ACCORDING TO THE STRUCTURE.

### STANDARD DUTY ASPHALT PAVEMENT SECTION

NOT TO SCALE

### TYPICAL MOUND-UP DETAIL @ FUEL DISPENSER

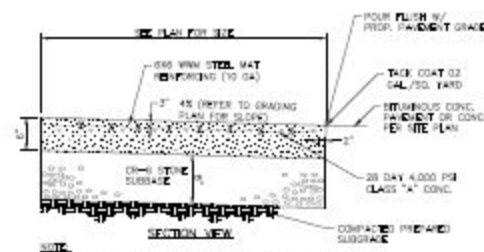
NOT TO SCALE



### GREASE INTERCEPTOR DETAIL

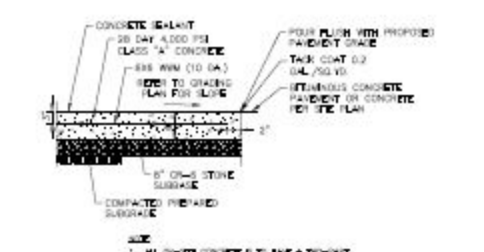
NOT TO SCALE

TRAP CAPACITY SUBJECT TO APPROVAL BY STATE OR LOCAL AGENCY. CONSTRUCTION MUST BE MONITORED, INCLUDING THE DUMPING THAT MUST MEET THE PLAN FOR THIS LOCATION.  
NOTE:  
1. VERIFY WITH LOCAL AGENCY FOR ANY MODIFIED REQUIREMENTS.  
2. SEE TO MEET OR EXCEED LOCAL AGENCY REQUIREMENTS FOR SPECIAL REQUIREMENTS.



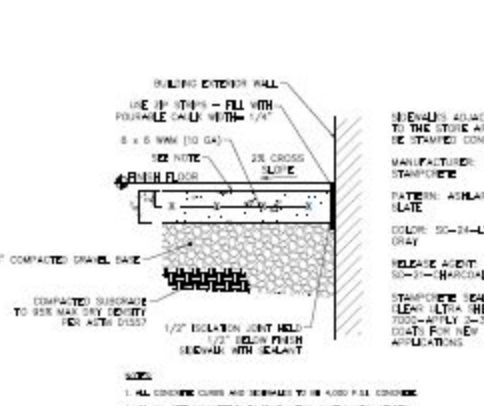
### CONCRETE PAD DETAIL @ TRASH ENCLOSURE

NOT TO SCALE



### TYPICAL 6" CONCRETE PAVEMENT SECTION

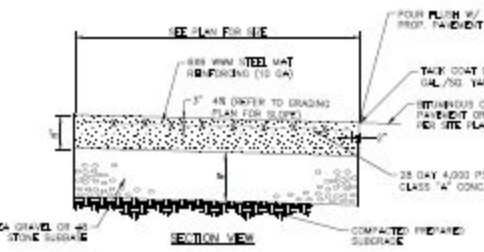
NOT TO SCALE



### SIDEWALK DETAIL

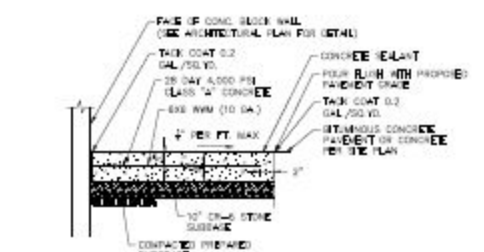
NOT TO SCALE

NOTE:  
1. ALL CONCRETE CURBS AND DETAILS TO BE 4000 PSI CONCRETE.  
2. ALL ON-SITE CONCRETE IS TO HAVE A TWO-PART DAYTON SEALER - 307/305 APP.



### CONCRETE FUEL TANK PAD DETAIL

NOT TO SCALE



### DUMPSTER PAD WITH 8" CONCRETE PAVEMENT SECTION

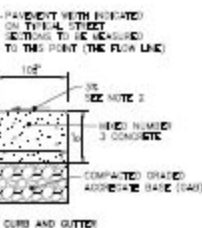
NOT TO SCALE



### HANDICAP PARKING SIGN DETAIL

NOT TO SCALE

NOTE:  
1. SIGNS SHALL MEET THE REQUIREMENTS OF THE MANUAL ON UNIFORM TRAFFIC CONTROL DEVICES.  
2. SIGNS ATTACHED WITH ADORN MUST TYPE FASTENERS.  
3. SIGNS SHALL BE INSTALLED ON LEFT SIDE OF NO PARKING SPACES AND ACCESSIBLE PARKING.



### MOUNTABLE CURB DETAIL

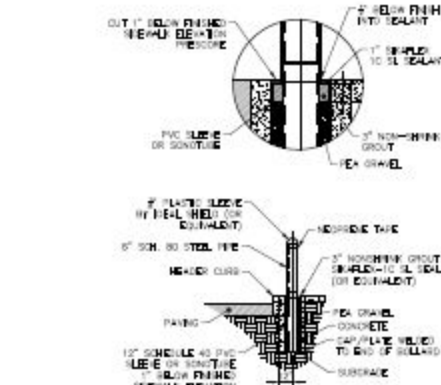
NOT TO SCALE

NOTE:  
1. A MOUNTABLE CURB SHALL HAVE A SLOTTED SIDE OF 4 INCHES AWAY FROM THE FLOW LINE AND SHALL NOT BE USED WHERE THE DRAINAGE CREATES A HAZARDOUS CONDITION.  
2. SLOTTED PART AT THE REAR SIDE OF INTERMEDIATE ATTACHMENTS OF THE HIGH SIDE OF SLOTTED ELEMENTS SHALL BE SLOTTED AT THE SAME RATE AND IN THE SAME MANNER AS THE PAVEMENT WITH PAVEMENT CROSS SLOPE. HIGH CURBS IS LOCATED ON THE LOW SIDE OF THE CURB AND THE RATE OF SLOTTED CURB IS GREATER THAN 3% FOR MOUNTABLE CURBS AND SLOTTED.  
3. A MINIMUM OF TWO (2) FEET OF COMPACTED (STABILIZED) EARTH OR EQUIVALENT SHALL SUPPORT THE ENTIRE BACK OF CURB.  
4. A POSSIBLE DRAINAGE SHALL BE PROVIDED BOTH BEHIND THE CURB AND ALONG THE SLOTTED AND FLOW LINE.  
5. MOUNTABLE CURBS TO BE UTILIZED IN FOUR CURB ISLANDS AROUND PERIMETER OF BUILDING.

### BOLLARD DETAIL

NOT TO SCALE

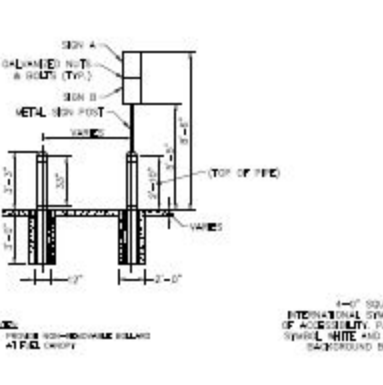
NOTE:  
1. SEE TO MEET OR EXCEED LOCAL AGENCY REQUIREMENTS FOR SPECIAL REQUIREMENTS.



### REMOVABLE BOLLARD DETAIL

NOT TO SCALE

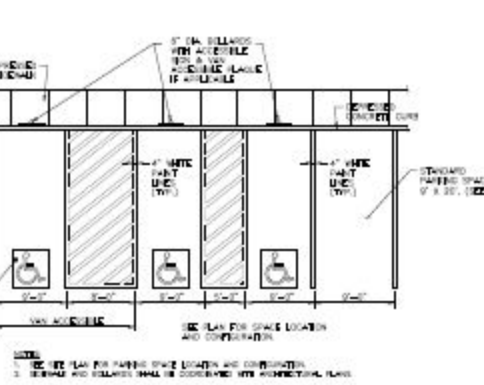
NOTE:  
1. VERIFY WITH LOCAL AGENCY FOR ANY MODIFIED REQUIREMENTS.



### ACCESSIBLE & STANDARD PARKING SPACE

NOT TO SCALE

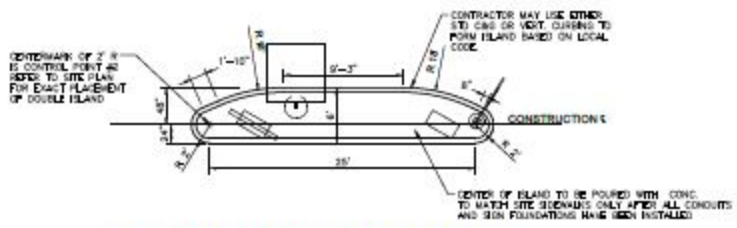
NOTE:  
1. SEE TO MEET OR EXCEED LOCAL AGENCY REQUIREMENTS FOR SPECIAL REQUIREMENTS.  
2. SIGNS AND BOLLARDS SHALL BE CONSIDERED WITH ARCHITECTURAL PLANS.



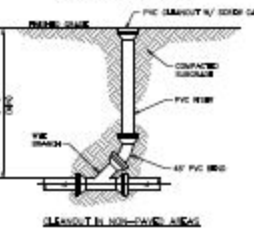
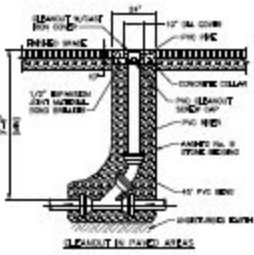
### ACCESSIBLE & STANDARD PARKING SPACE

NOT TO SCALE

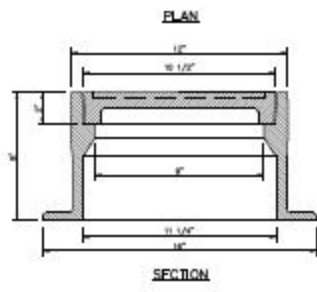
NOTE:  
1. SEE TO MEET OR EXCEED LOCAL AGENCY REQUIREMENTS FOR SPECIAL REQUIREMENTS.  
2. SIGNS AND BOLLARDS SHALL BE CONSIDERED WITH ARCHITECTURAL PLANS.



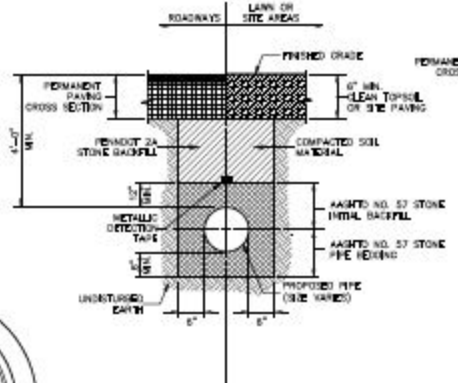
**DOUBLE DRIVE THRU ISLAND DETAIL**  
NOT TO SCALE



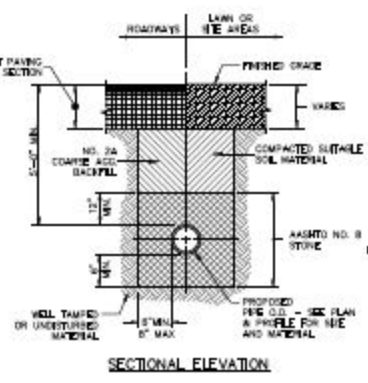
**STANDARD SANITARY LATERAL CLEANOUT**  
NOT TO SCALE



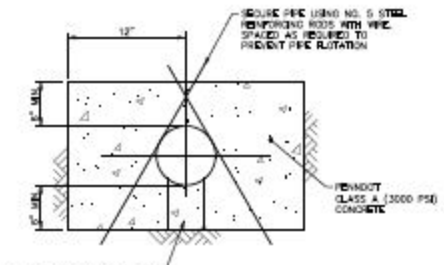
**CLEANOUT / OBSERVATION TEE CAP PROTECTION CASTING**  
NOT TO SCALE



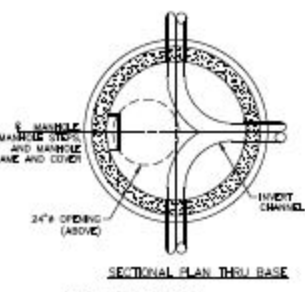
**WATERLINE TRENCH**  
NOT TO SCALE



**SANITARY SEWER TRENCH**  
NOT TO SCALE

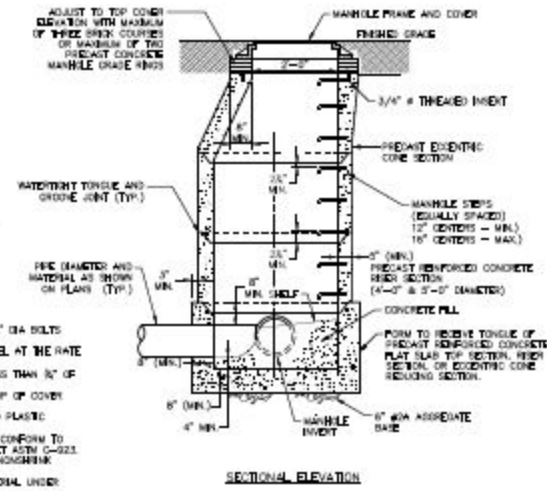


**CONCRETE ENCASEMENT**  
NOT TO SCALE

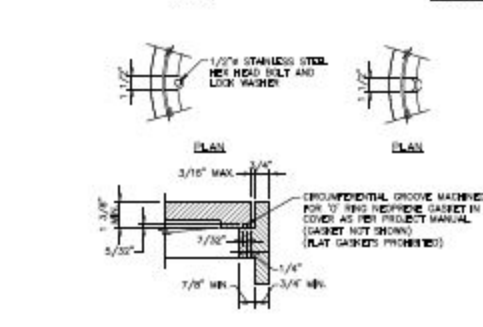
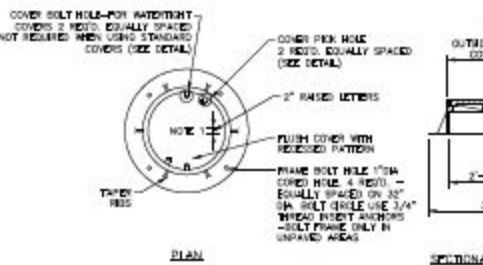


**SECTIONAL PLAN THRU BASE**

- MANHOLE GENERAL NOTES:
1. SOLT MANHOLE FRAME IN PLACE WITH FOUR 3/4" DIA BOLTS AND PLAT WASHERS.
  2. SECURE THE SOLT FRAME TO THE INVERT CHANNEL AT THE RATE OF 1" PER FOOT MINIMUM.
  3. BOTTOM OF INVERT CHANNEL SHALL BE NOT LESS THAN 36" OF THE CLEARANCE OF THE PIPE.
  4. FINISHED GRADE SHALL BE FLUSH WITH THE TOP OF COVER UNLESS OTHERWISE NOTED.
  5. ALL MANHOLE JOINTS SEALED WITH PREFORMED PLASTIC SEALING COMPOUND (GRAM-NOL).
  6. PRECAST REINFORCED CONCRETE MANHOLE TO CONFORM TO ASTM C-475, PART 1-PLACE GASKET TO MEET ASTM C-222.
  7. FILL LIFTING HOLES WITH RUBBER PLUG AND NEIGHBORING GROUT FOR WATER TIGHT SEAL.
  8. MINIMUM OF 6" OF BEST CLASS BEDDING MATERIAL UNDER MANHOLE BASE SECTION.



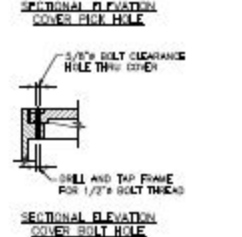
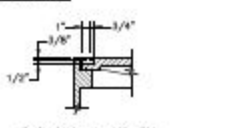
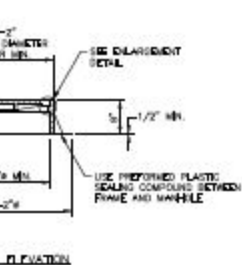
**PRECAST CONCRETE MANHOLE**  
NOT TO SCALE



**ELARGEMENT DETAIL**

- NOTES:
1. LETTERING SHALL BE "SANITARY SEWER".
  2. ALL MANHOLE FRAMES AND COVERS SHALL BE FOR HEAVY DUTY TRAFFIC, ASBESTO MIMWAY LOADING CLASS HP-25.
  3. USE NEURAL DUCT JORDAN IRON WORKS, OR APPROVED EQUIVALENT.
  4. APPLY LUBRICANT TO COVER BOLTS.
  5. APPLY ANTI-GRIP COMPOUND TO ALL THREADED SURFACES.

**STANDARD OR WATERTIGHT FRAME AND COVER**  
NOT TO SCALE



- NOTES:
1. LETTERING SHALL BE "SANITARY SEWER".
  2. ALL MANHOLE FRAMES AND COVERS SHALL BE FOR HEAVY DUTY TRAFFIC, ASBESTO MIMWAY LOADING CLASS HP-25.
  3. USE NEURAL DUCT JORDAN IRON WORKS, OR APPROVED EQUIVALENT.
  4. APPLY LUBRICANT TO COVER BOLTS.
  5. APPLY ANTI-GRIP COMPOUND TO ALL THREADED SURFACES.

**STANDARD OR WATERTIGHT FRAME AND COVER**  
NOT TO SCALE

**OPTIONS:**  DH152 (WIRE MESH LEVEL CONTROLS)  DR152 (WIRELESS LEVEL CONTROLS)

SEMIPOSITIVE DISPLACEMENT TYPE PUMP EACH DIRECTLY DRIVEN BY A 1 HP MOTOR

CONCRETE BALLAST MAY BE REQUIRED SEE INSTALLATION INSTRUCTIONS FOR DETAILS

NOTE: DIMENSIONS ARE FOR REF ONLY

UL	NSF	SP		
AD	CH	10/20/10	E	
DR BY	DNIS	DATE	ISSUE	SCALE
<b>eone</b>				
SEWER SYSTEMS				
MODEL DH152 / DR152				
DETAIL SHEET				
NA0052P02				

**OPTIONS:**  DH272 (WIRE MESH LEVEL CONTROLS)  DR272 (WIRELESS LEVEL CONTROLS)

SEMIPOSITIVE DISPLACEMENT TYPE PUMP EACH DIRECTLY DRIVEN BY A 1 HP MOTOR

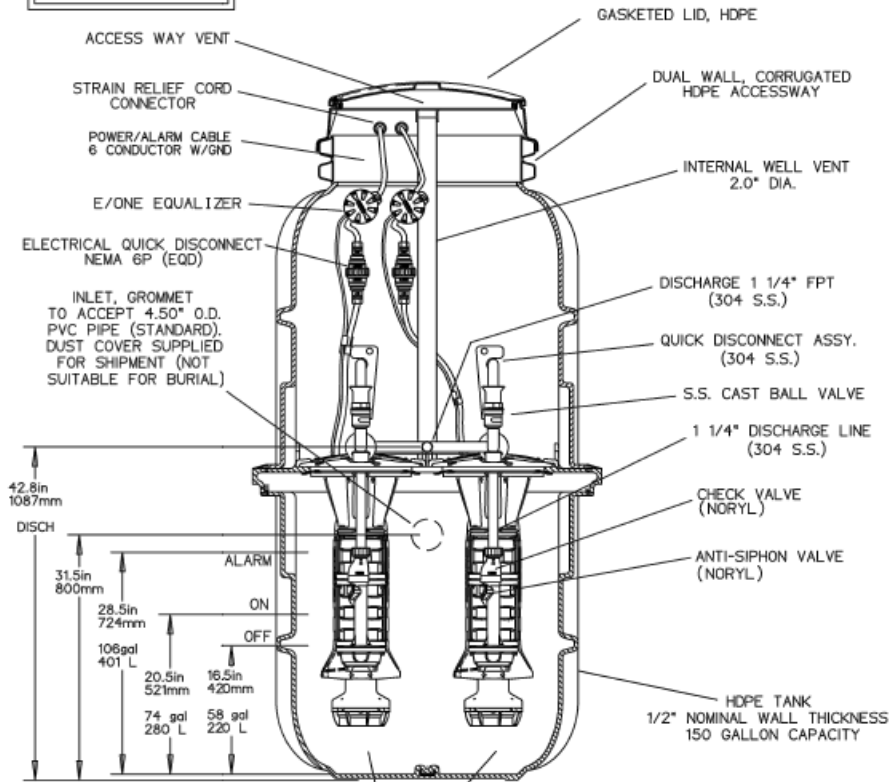
CONCRETE BALLAST MAY BE REQUIRED SEE INSTALLATION INSTRUCTIONS FOR DETAILS

NOTE: DIMENSIONS ARE FOR REF ONLY

UL	NSF	SP		
AD	CH	10/20/10	E	
DR BY	DNIS	DATE	ISSUE	SCALE
<b>eone</b>				
SEWER SYSTEMS				
MODEL DH272 / DR272				
DETAIL SHEET				
NA0053P02				

OPTIONS :  **DH152** (HARD WIRED LEVEL CONTROLS)  
 **DR152** (WIRELESS LEVEL CONTROLS)

FIELD JOINT REQUIRED FOR MODELS



SEMI-POSITIVE DISPLACEMENT TYPE PUMP EACH DIRECTLY DRIVEN BY A 1 HP MOTOR

CONCRETE BALLAST MAY BE REQUIRED SEE INSTALLATION INSTRUCTIONS FOR DETAILS

NOTE: DIMENSIONS ARE FOR REF ONLY



AD	CH	10/20/10	E	
DR BY	CHK'D	DATE	ISSUE	SCALE



MODEL DH152 / DR152  
 DETAIL SHEET

NA0052P02